



Fermor Avenue Bridge Rehabilitation and Roadworks

Public Information Session
January 10, 2018

The purpose of today's information session is to provide project information about the Fermor Avenue Bridge Rehabilitation and Roadworks.

Representatives from the project team are here to answer your questions and address any concerns you might have.

Large scale versions of the drawings can be found on the central tables.

All public information session materials and the exit survey are posted on the project website.

www.winnipeg.ca/fermor

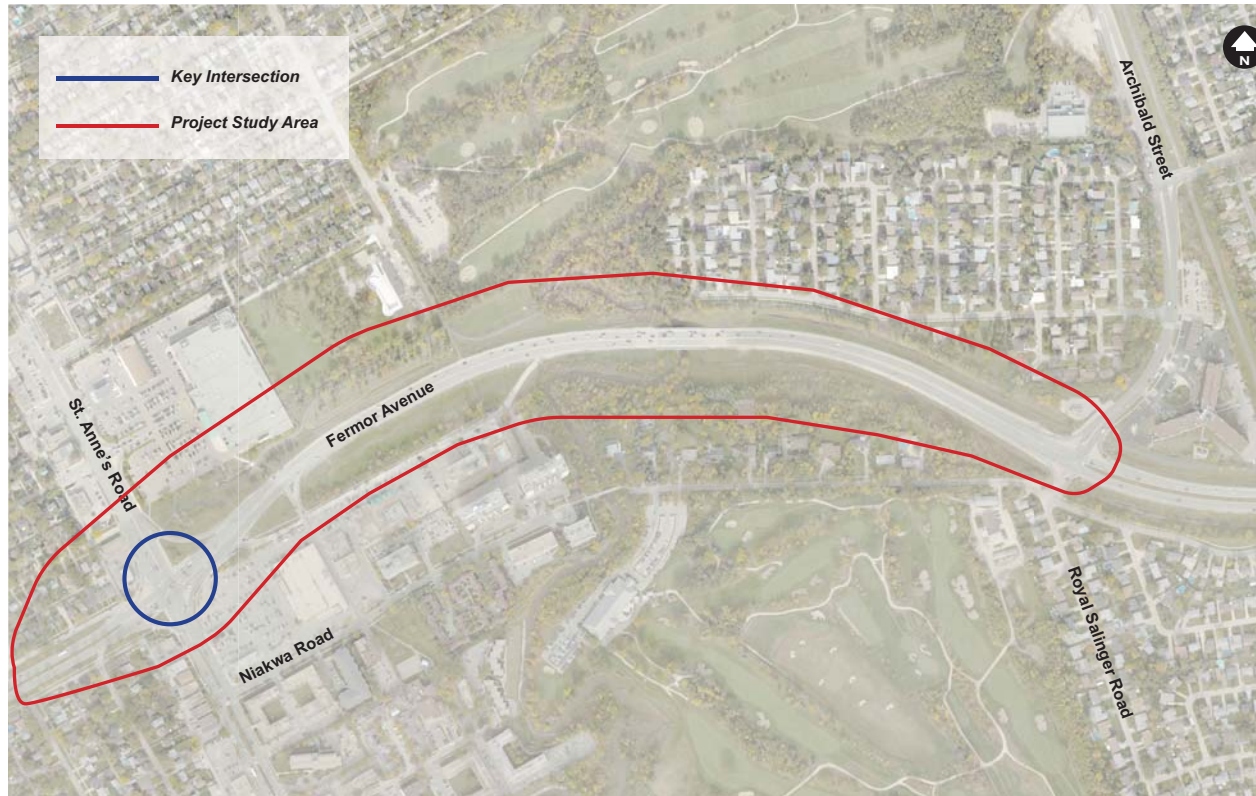


Fermor Avenue Bridge Rehabilitation and Roadworks

WELCOME

Public Information Session
January 10, 2018
Board 1





Fermor Avenue Bridge Rehabilitation and Roadworks
PROJECT NEED & BACKGROUND

Google
 May 2014 ©2014 Google



Why is this project needed?

- Fermor Avenue between St. Anne's Road and Archibald Street along with the bridge over the Seine River was originally constructed in 1953
- The corridor was widened to four lanes in 1969
- The bridge was rehabilitated and strengthened in 1984 to support heavier vehicles.

The existing concrete pavement on this section of Fermor Avenue has generally reached the end of its life and needs to be replaced. The bridge is rated as being in fair to poor condition, requiring major rehabilitation.

The proposed transportation and bridge works are required to extend the service life of the bridge and to accommodate the desired corridor improvements.

What roadway improvements are being considered?

A comprehensive reconstruction/rehabilitation of Fermor Avenue will allow for improvements to the roadway including:

- Reducing access points around the Fermor Avenue and St. Anne's Road intersection
- Less abrupt curves
- Longer exit/acceleration lanes to Alpine Avenue and Seagrim Road

How are pedestrians and cyclists being considered in this project?

Pedestrian and cycling needs in this area have been examined as part of this study, including:

- A new pedestrian and cyclist path extending to, and across the north side of the Fermor Avenue bridge to provide an all season connection across the Seine River
- An underpass for pedestrians & cyclists that provides a link between Niakwa Trail and Niakwa Road, and facilitates connections to the larger network
- Integration of crossing safety improvements into Fermor Avenue at St. Anne's, and the north leg of Fermor Avenue at Archibald Street

Fermor Avenue Bridge Rehabilitation and Roadworks PUBLIC ENGAGEMENT PROCESS



Public Information Session
January 10, 2018
Board 3

PROJECT TIMELINE

Here are some of the stakeholders we have spoken with:

- Residents within the Study Area
 - Local businesses
 - Safeway
- Niakwa Country Club
 - Bike Winnipeg
- Functional Transit Winnipeg
 - Save Our Seine
 - Old St. Vital Biz
- Winnipeg Trails Association
- Active Transportation Advisory Committee
 - Louis Riel School Division
 - Franco Manitoban School Division
 - Various City Departments

**SPRING 2016
PROJECT START**

**SUMMER & FALL
2016
STAKEHOLDER
MEETINGS**

- 14 Stakeholder meetings
- GOALS**
- Inform & communicate project details
 - Receive input on preliminary design
- OUTCOMES**
- Analyze feedback
 - Refine preliminary design

**LATE FALL 2016
OPEN HOUSE**

- December 13, 2016 Open House
- GOALS**
- Inform & communicate project details
 - Receive input on preliminary design
- OUTCOMES**
- Analyze feedback
 - Refine preliminary design
 - Provide input for detailed design

Preliminary Design

WE ARE HERE

January 10, 2018 Public Information Session

GOALS

- Inform & communicate project details

OUTCOMES

- Analyze feedback for inclusion in final public consultation report

**WINTER 2017
SUBMISSION OF
PRELIMINARY
DESIGN REPORT**

**WINTER 2018
PUBLIC
INFORMATION
SESSION**

Detailed Design

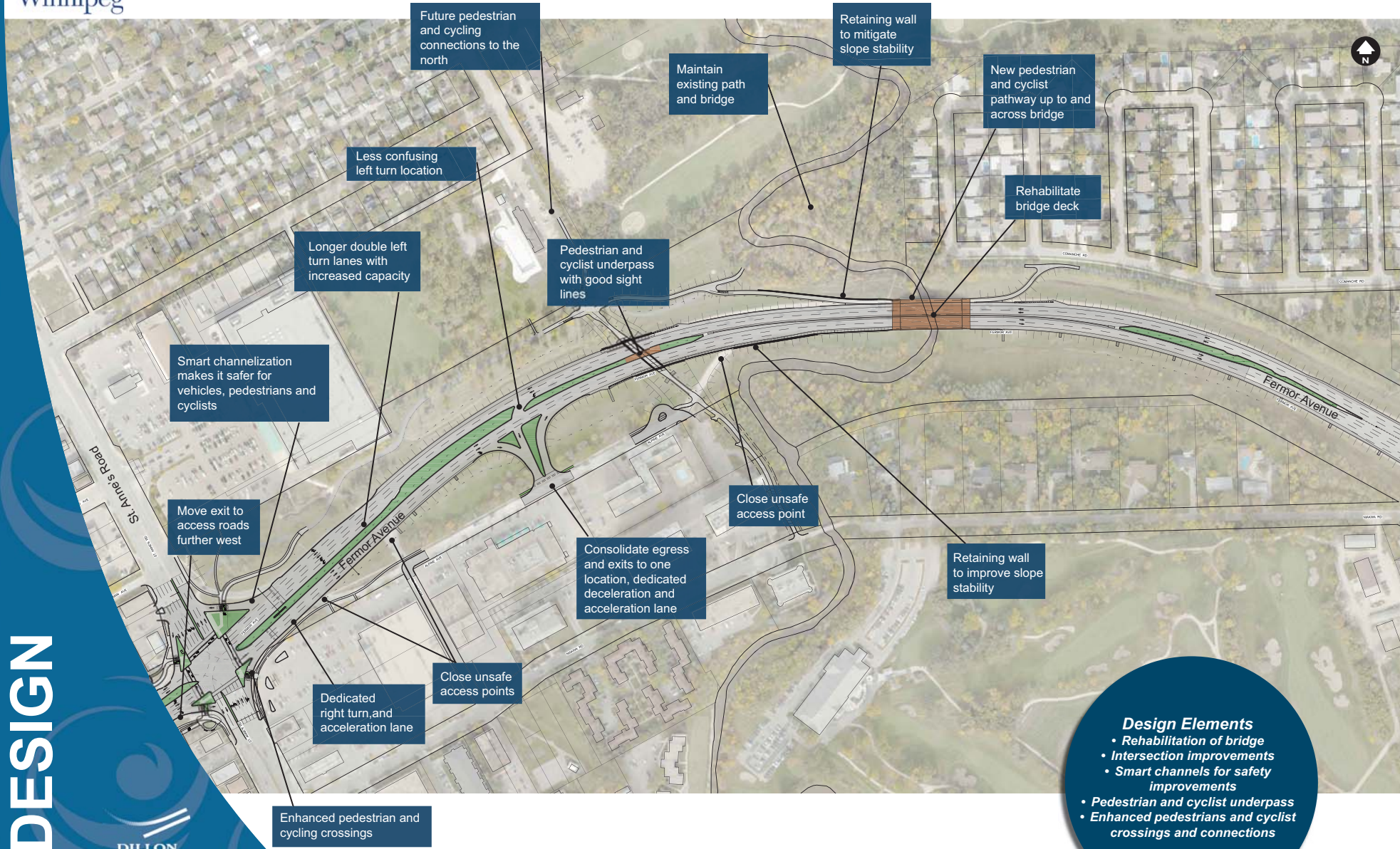
FERMOR EXISTING CONTEXT



Existing Context

- Disconnected pedestrian and cyclist network
- Lack of safe pedestrian and cycling crossings of Fermor
 - Unsafe merge lanes
 - Missing acceleration lanes
 - Unsafe exit locations
- Poor road and bridge conditions
- Riverbank stability and erosion issues

Fermor Avenue Bridge Rehabilitation and Roadworks
FERMOR DETAILED DESIGN



- Design Elements**
- Rehabilitation of bridge
 - Intersection improvements
 - Smart channels for safety improvements
 - Pedestrian and cyclist underpass
 - Enhanced pedestrians and cyclist crossings and connections



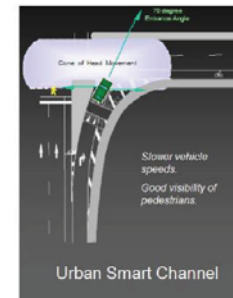
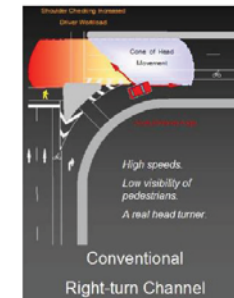
Fermor and St. Anne's Improvements

Proposed Fermor and St. Anne's Improvements

- Dedicated right turn lanes with 'smart channels' to increase safety for all users;
- Enhanced safety & physical improvements for pedestrian & cyclist crossing of the intersection;
 - Relocation or redesign of access points in close proximity to the intersection;
 - Dedicated acceleration lane for northbound right turn St. Anne's onto east-bound Fermor;
 - Longer left turn lanes and increased capacity on Fermor Ave in both directions; and,
 - Redesign of bus stop areas to accommodate longer articulated transit buses.
- Improved overhead guide signage.



Example of a smart channel

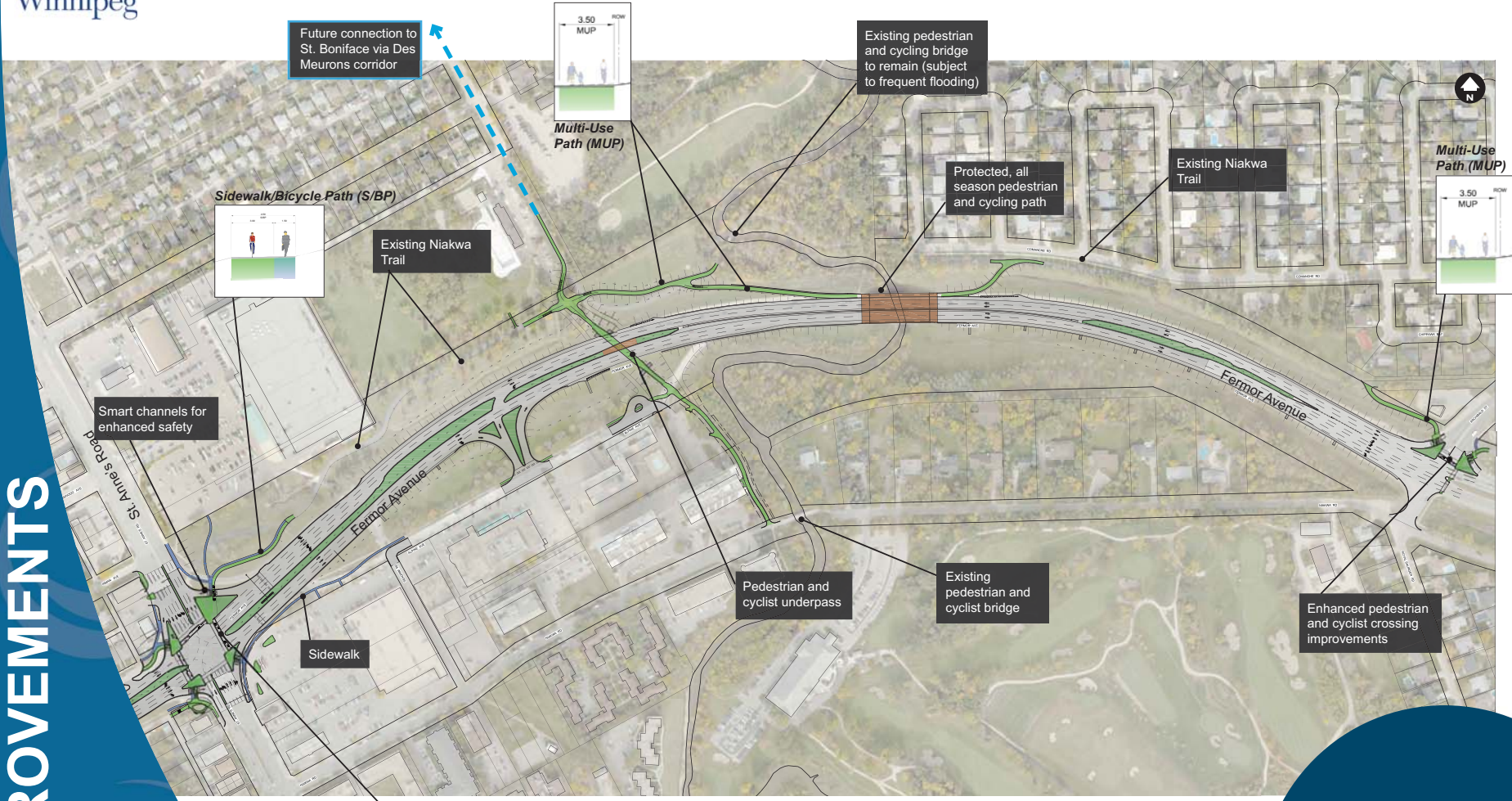


Conventional channel vs. Smart channel

Major intersection improvements based on the traffic study are shown here.

The project team has included various other improvements to turning movements, and pedestrian and cyclist crossings.

PEDESTRIAN & CYCLING NETWORK & IMPROVEMENTS



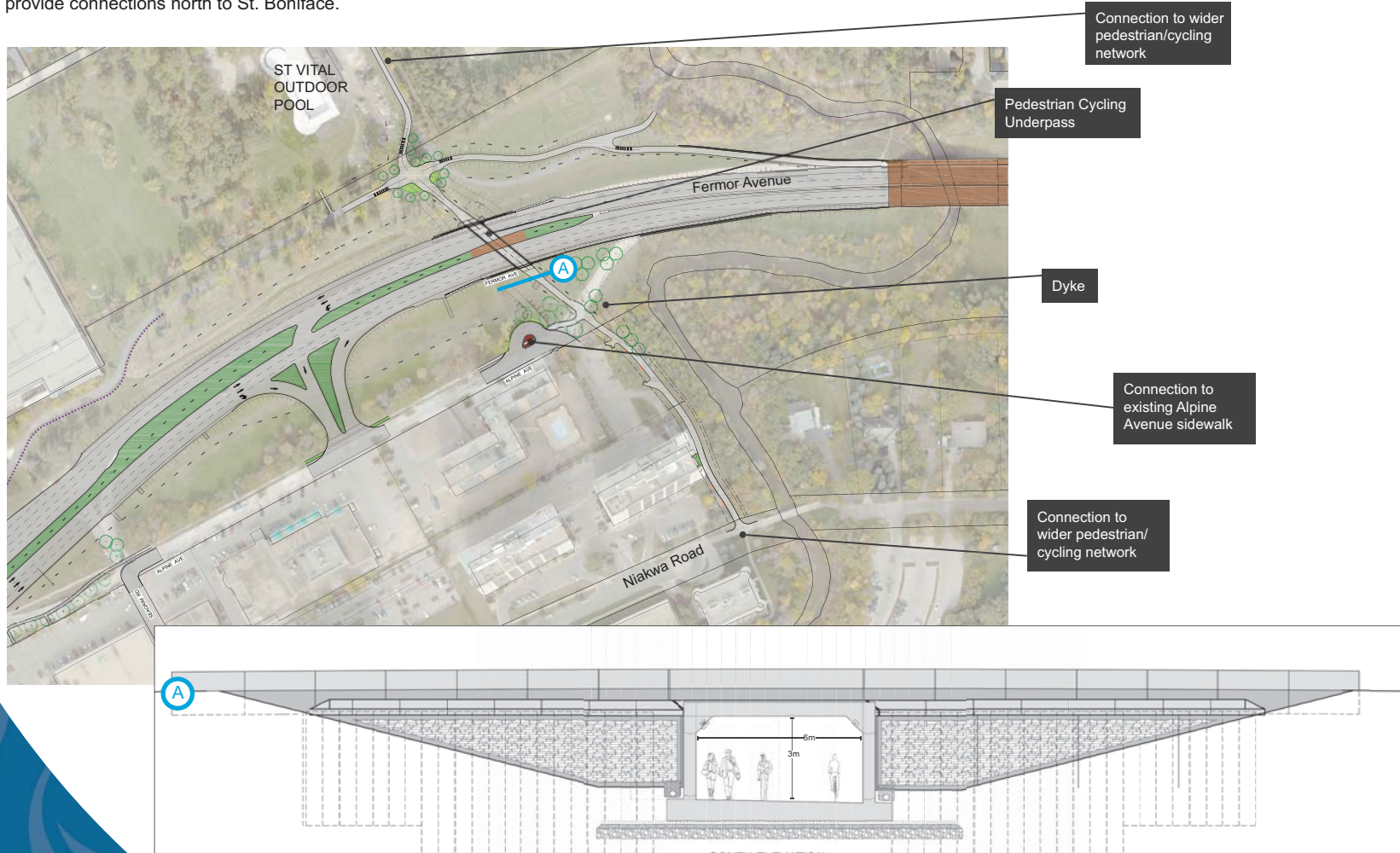
- Proposed Improvements:**
- Smart Channels
 - Enhanced intersection crossings
 - Pedestrian and cyclist underpass
 - Protected all season crossing of Seine
 - Enhanced pathways and connections

Improving pedestrian & cyclist connections across Fermor Avenue was examined as part of this project, including consideration for an overpass or underpass at several locations between St. Anne's Road and the Seine River. As part of this analysis, it was concluded that a pedestrian & cyclist underpass just west of the Seine River was the preferred option. An underpass in this location was chosen to connect Niakwa Road (a designated pedestrian & cyclist corridor) via an improved multi-use path north to the future pedestrian & cycling improvements along Rue Des Meurons, which would provide connections north to St. Boniface.

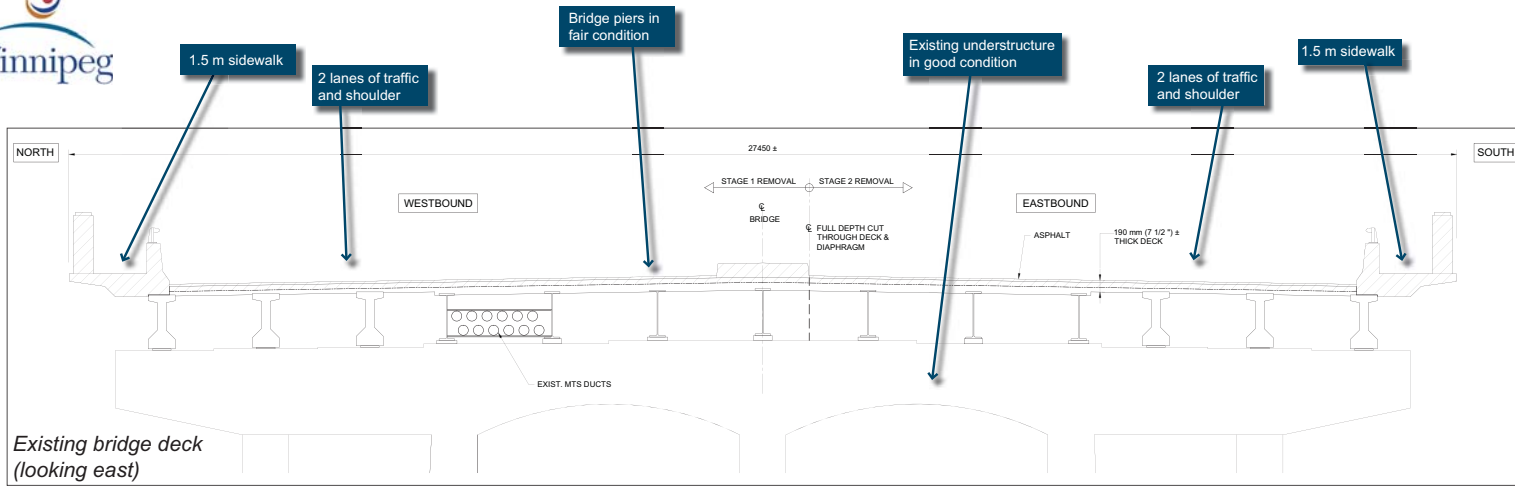
The proposed pedestrian & cyclist underpass will include:

- A 3m high and 6m wide envelope for pedestrians and cyclists in the underpass structure;
- A straight and gently sloped path to increase visibility and accessibility to the underpass, including clear sight lines from both sides of the underpass for safety;

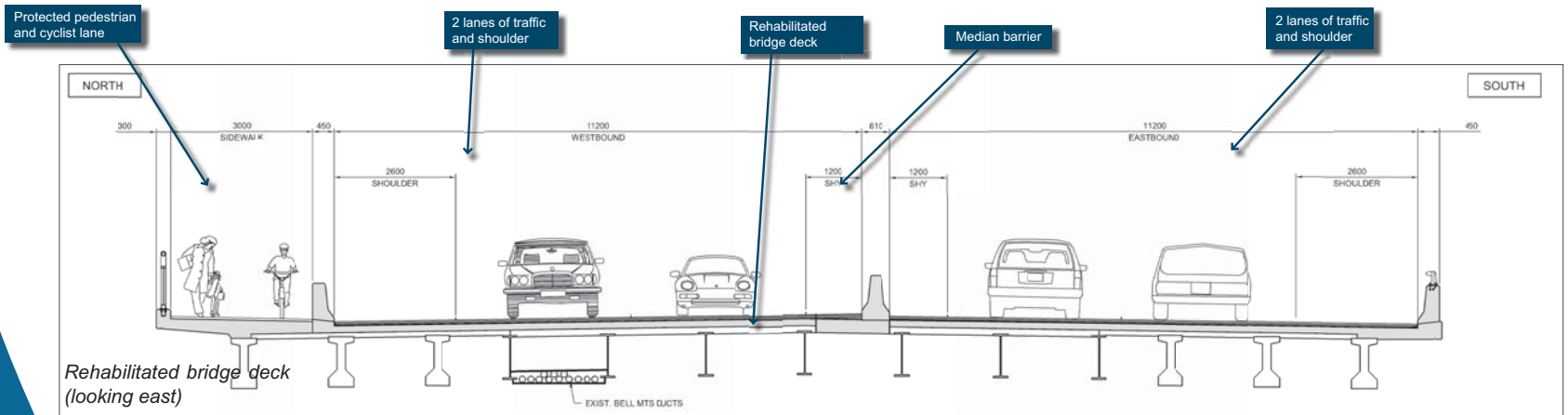
- Lighting for day-time and night-time illumination and safety in the underpass structure and along the connecting pathways;
- An improved 3.5m wide multi-use path between Niakwa Road and the underpass, just west of the Seine River, with pathway lighting and seating areas.



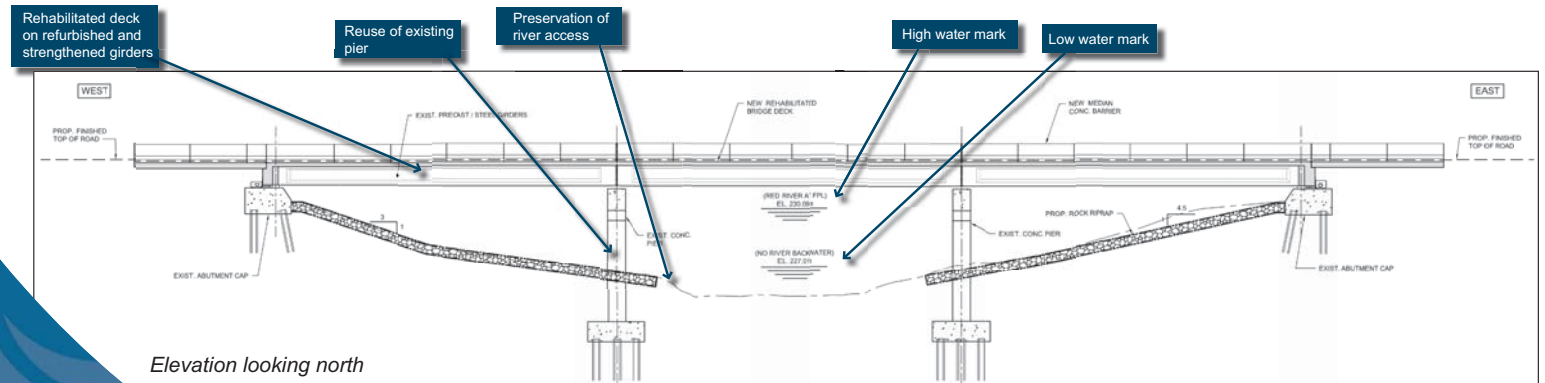
BRIDGE REHABILITATION



Existing bridge deck (looking east)



Rehabilitated bridge deck (looking east)



Elevation looking north

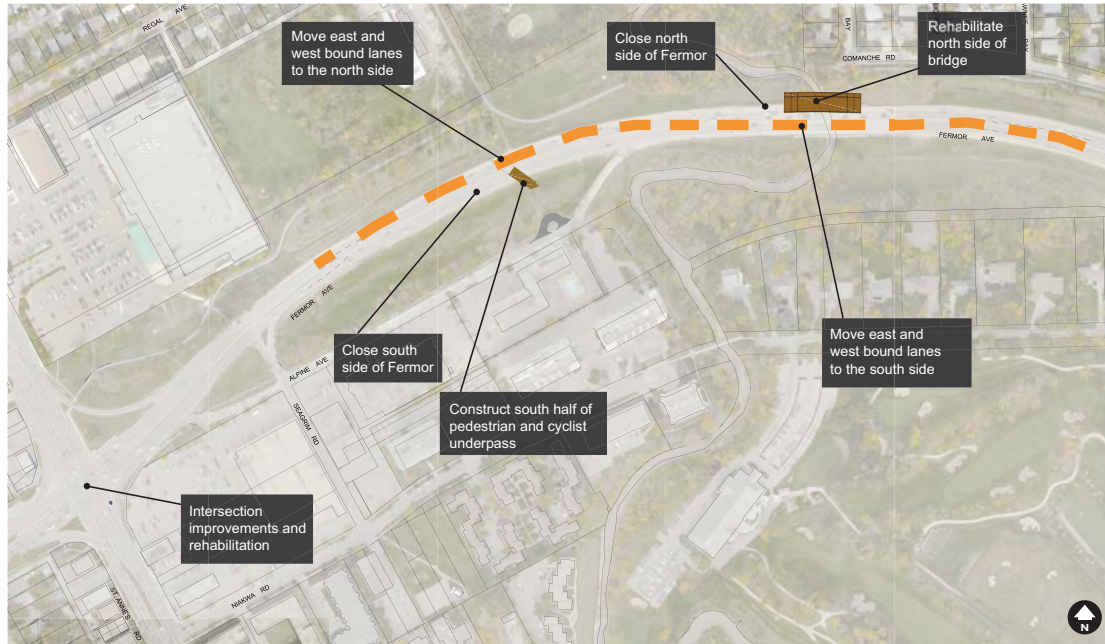
- Bridge Rehabilitation:**
- Partially replace bridge deck
 - Refurbish and strengthen existing girders
 - Reuse piers and rehabilitate abutments
 - 4 lanes of traffic
 - Protected pedestrian and cyclists' lane on north side
 - Preservation of river access



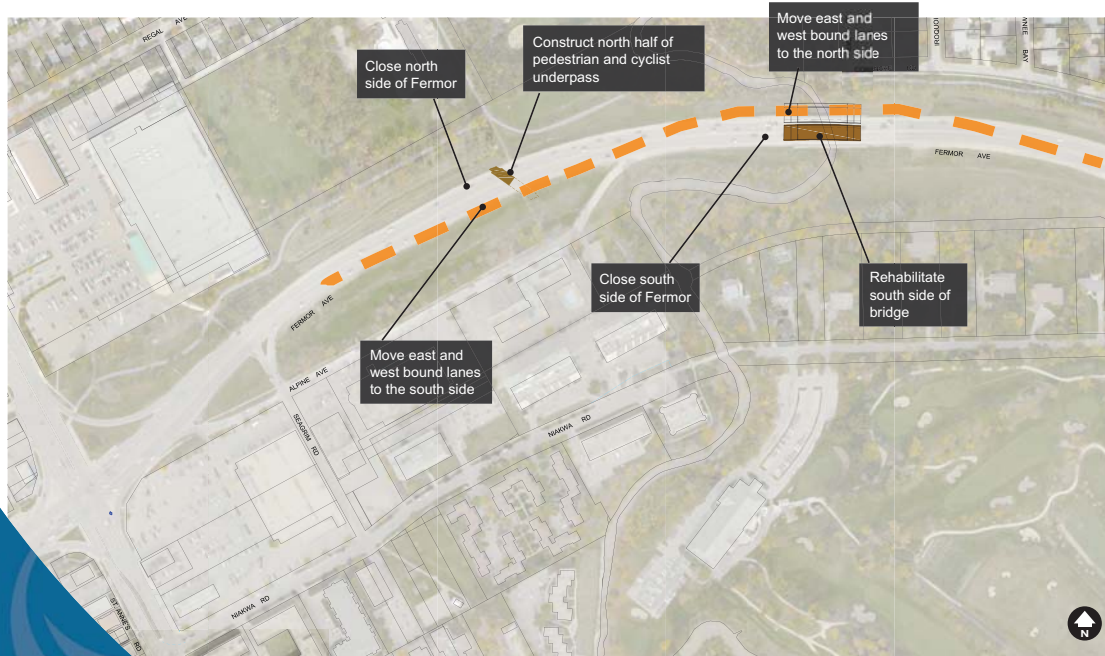
Fermor Avenue Bridge Rehabilitation and Roadworks CONCEPTUAL CONSTRUCTION PHASING



Public Information Session
January 10, 2018
Board 10



Spring 2018
South pedestrian and cyclist underpass construction and north side bridge rehabilitation



Spring 2019
North pedestrian and cyclist underpass construction and south side bridge rehabilitation

Why not build a completely new bridge instead of rehabilitating the existing one?

The existing bridge is rated in poor condition and needs major rehabilitation work to extend its service life or requires a replacement with a new structure. An extensive condition assessment of the bridge was completed as part of the preliminary design process. Ultimately, major rehabilitation of the bridge was selected as the preferred course of action. This rehabilitation will extend the life of the structure, and provide corridor improvements, while still fitting within the City's Capital Budget.

Will access be maintained to existing businesses along Fermor Avenue?

Access to businesses along Fermor Avenue and St. Anne's Road will generally be maintained. There will be changes in the access points from Fermor Avenue to Alpine Avenue and short-term temporary closures during construction may occur.

Why are the access points to Alpine Ave from Fermor proposed to be changed?

The existing vehicle access points between Fermor Avenue and Alpine Avenue have a variety of safety concerns. The western most access point is too close to the intersection of Fermor Avenue and St. Anne's Road and poses a high potential for vehicle accidents.

The eastern most access point is too close to the Fermor Avenue bridge over the Seine River for a proper acceleration lane and to allow vehicles to safely merge into traffic. Improving the double left turn lanes from westbound Fermor Avenue to St. Anne's Road is challenging with the location of the central access point at Alpine Ave and Seagrim Road.

Consolidating three access points into a single access point mid-way on Alpine Avenue will:

- Enable safe vehicle movements in all directions with dedicated turn and acceleration lanes;
- Preserve access to this area; and
- Allow improvements to the double left turn lanes on Fermor Avenue at St. Anne's Road.

Will Transit service be affected during construction?

Route 16 service will be maintained throughout the construction period. The routing will change both during and after construction and some stops will be temporarily and permanently relocated. These changes are necessary as a result of the roadway modifications but will not substantially affect the transit service in the area. Routes 55 and 59 traveling along St. Anne's Road will not be affected by construction. The stops on St. Anne's Road at Fermor Avenue may be temporarily relocated.

What options were considered for pedestrian and cycling crossing of Fermor Avenue?

There is a strong demand for a pedestrian and cycling crossing of Fermor Avenue, roughly in line with Des Meurons Street to the north. The preliminary design study examined a variety of crossing options at this location, including above grade (bridge) and below grade (underpass) options. The bridge options would have required circuitous approaches that would have lengthened the crossing distance considerably. An underpass was found to be the preferred option, since there is sufficient room to provide clear sightlines for safety.

What pedestrian and cycling facilities will be constructed as part of this project?

The pedestrian and cycling improvements that will be constructed as part of this project include:

- A north – south pedestrian & cycling underpass crossing of Fermor Avenue in line with Des Meurons Street to the north;
- Extension and widening of the existing private pedestrian and cycling pathway between Appleton Estates and the Seine River to connect the underpass crossing to Niakwa Road;
- Direct connections between the Niakwa Trail and the north sidewalk of the Fermor Avenue Bridge over the Seine River; and,
- Localized connections and improvements

Will Fermor Avenue remain open during construction?

One lane of travel in each direction will remain open at all times during construction. Two lanes of travel in each direction through the St. Anne's Road intersection will remain open for the majority of the construction project. Once the first half of construction is complete in Fall 2018, Fermor Avenue will be temporarily reopened to two lanes of travel in each direction for the winter of 2018-19. Traffic will then return to one lane in each direction for the 2019 construction season.

When will construction take place?

Construction will begin in Spring 2018. The intersection of Fermor Avenue and St. Anne's Road and one side of Fermor Avenue between St. Anne's Road and Archibald Street will be reconstructed/rehabilitated during the 2018 construction season. The remaining side of Fermor Avenue will be reconstructed/rehabilitated during the 2019 construction season. The project will open to traffic in Fall 2019.



Spring 2016 - Preliminary Design begins

Summer - Fall 2016 Stakeholder meetings with adjacent property owners and residents

Winter 2016 Open House to review preliminary design

Winter - Spring 2017 Submission of Preliminary Design report

Summer 2017 Detailed Design Begins

WE ARE HERE
Winter 2018 Public Information Session for Detailed Design

Winter 2018 Submission of Detailed Design drawings and contract documents

Spring 2018 Construction begins

Fall 2019 Construction complete

We will continue to communicate with stakeholders through the City of Winnipeg's Major Projects webpage until the end of construction.

Thank you for attending! Please take a moment to complete and submit the exit survey.

All public information session materials and the exit survey are posted on the project website.

www.winnipeg.ca/fermor



If you have any further questions, please don't hesitate to contact the public consultation team:

Lea Hastie
Phone: 204-453-2301 ext. 4008
Email: lhastie@dillon.ca

David Marsh
Phone: 204-453-2301 ext. 4094
Email: dmarsh@dillon.ca



Fermor Avenue Bridge Rehabilitation and Roadworks
NEXT STEPS