

# PUBLIC OPEN HOUSE

## Panet Road / Molson Street Reconstruction



April 24, 2013

# What is the Purpose of the Project?

To address issues associated with traffic growth around Molson Street. Project issues include:

- Delay at rail crossings
- Traffic congestion at Molson Street and Concordia Avenue intersection
- Lack of walking and cycling facilities
- Land drainage
- Street lighting
- Aesthetics (the “look” and “feel” of the corridor)

# Project Phases

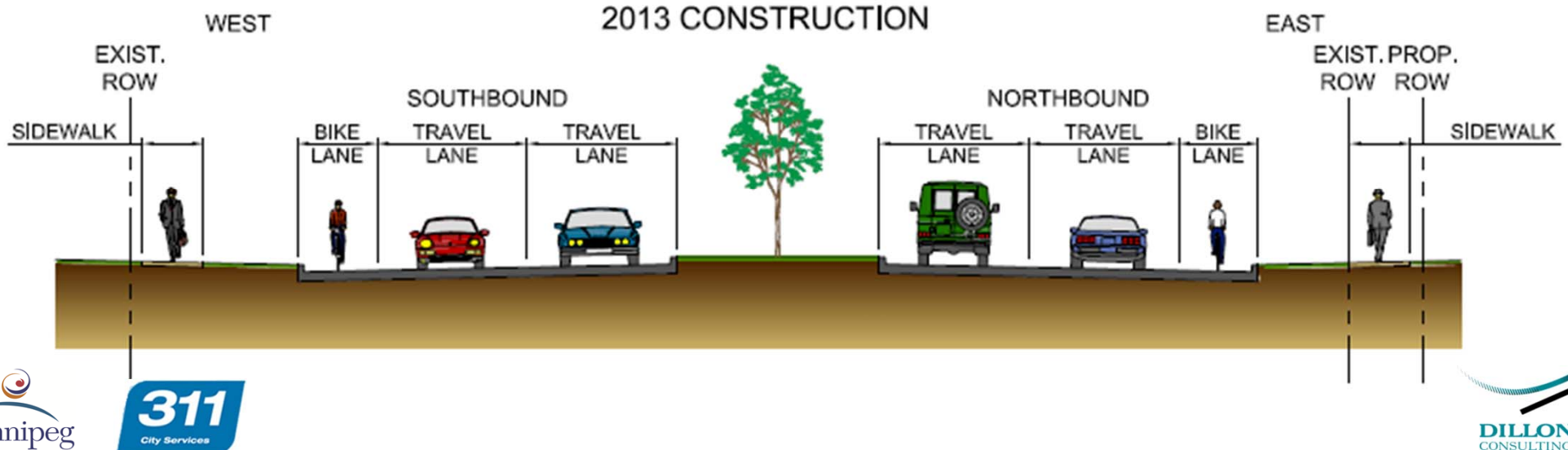




# 2013 Construction

## Panet Road / Molson Street Between Munroe Avenue and Kimberly Avenue

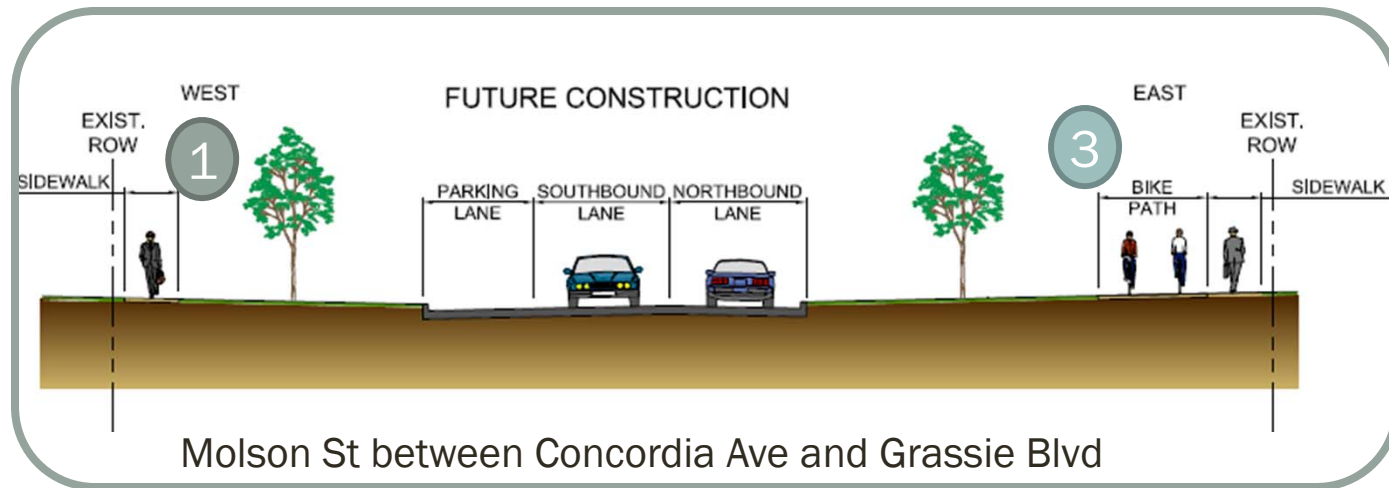
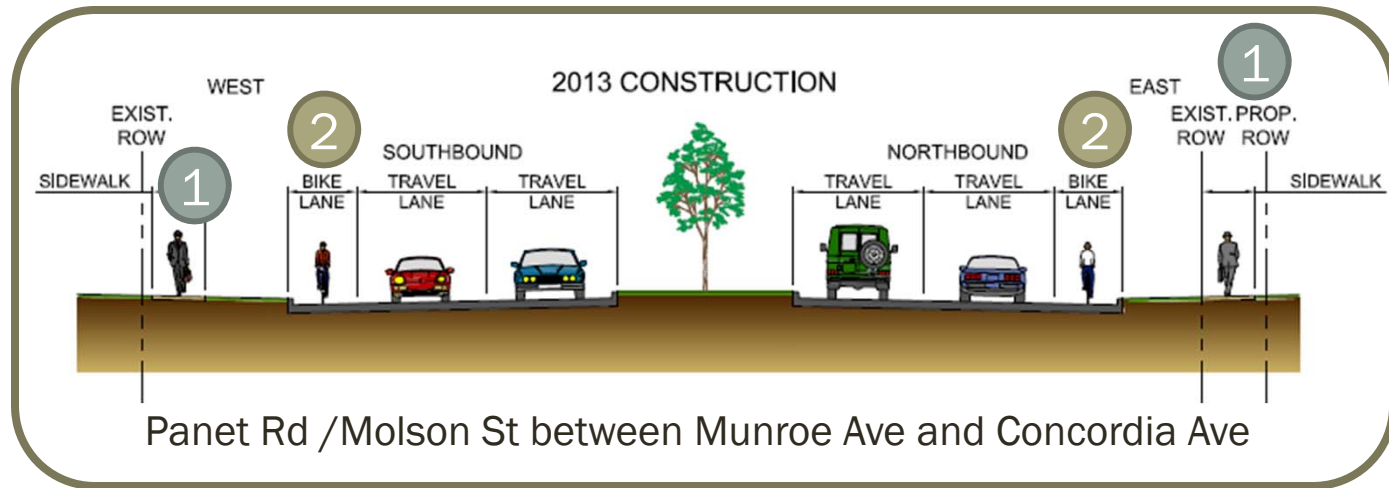
- ❑ Molson Street will be upgraded from a two-lane rural roadway to a four-lane divided street. Ditches will be eliminated and replaced by Land Drainage Sewers.



# Active Transportation

Improvements include:

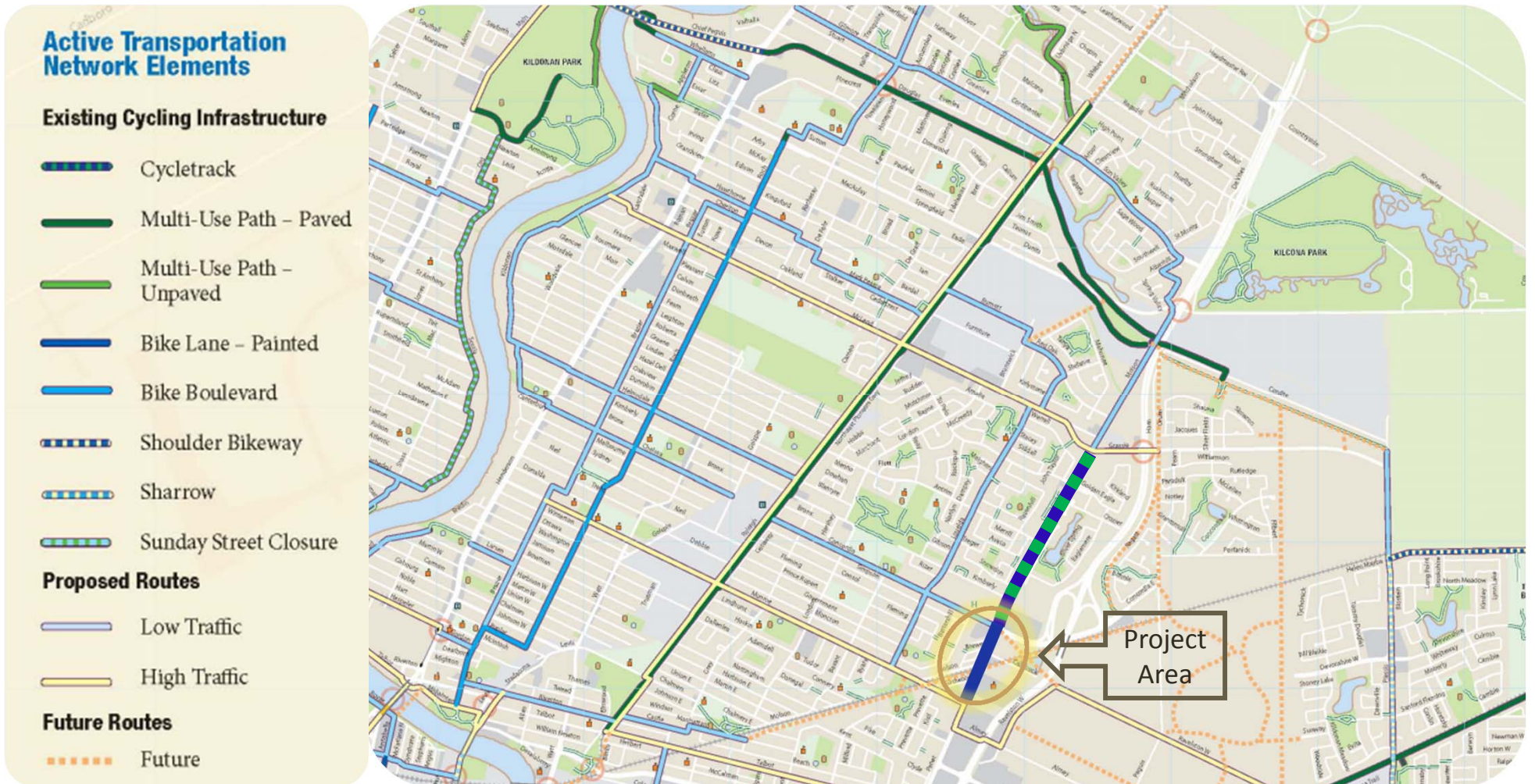
- 1 East and West sidewalks throughout corridor.
- 2 Addition of bike lanes south of Concordia Avenue.
- 3 Future addition of east side two-way bike path (adjacent to sidewalk), north of Concordia.





# Active Transportation

## City of Winnipeg 2012 Cycling Map:



# Universal Design

- ❑ Retail developments, schools, parks, churches, hospital, and other care facilities attract many pedestrians to this area.
- ❑ Users with mobility constraints, strollers, small children, vision or hearing impairments, etc. require specific accessibility consideration.
- ❑ Considerations include sidewalk ramps at intersections and a consistent and continuous sidewalk network.
- ❑ Detectable warning surface tiles to be installed at the intersection of Molson Street and Concordia Avenue.





# Transit

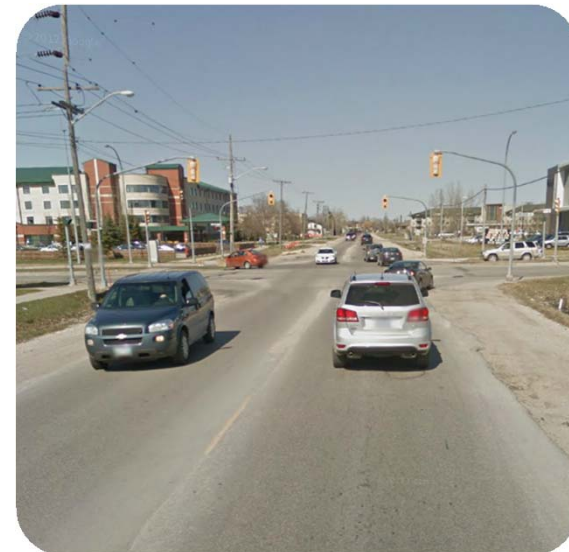
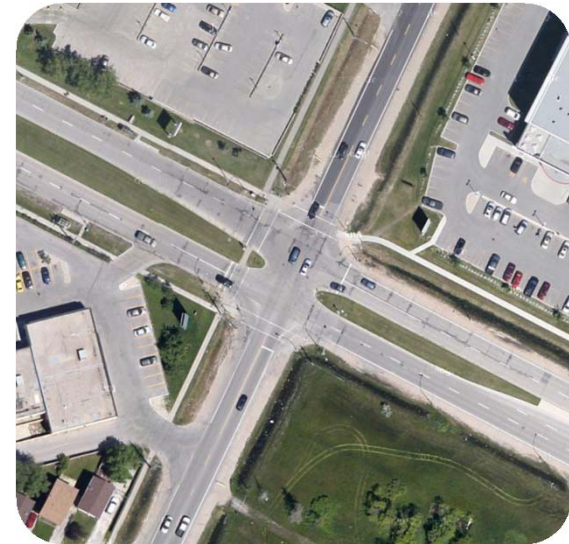
- ❑ Gravel shoulder bus stops will be replaced by concrete bus pads connected to sidewalks.
- ❑ Transit stops may be moved to encourage passengers to cross Molson Street at safer locations.





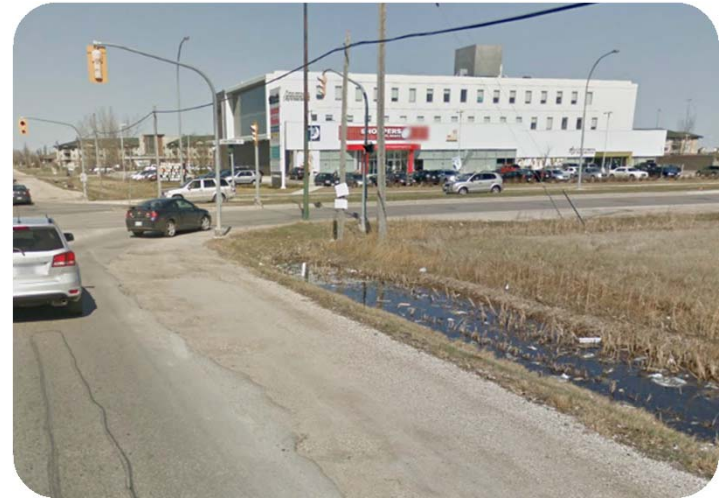
# Intersections

1. Drivers currently experience congestion / delay along the Panet/Molson corridor primarily due to the existing configuration of the Molson/Concordia intersection.
2. Roundabout analysis was undertaken at Concordia, Antrim/Timberline, and Tu-Pelo/Golden Eagle. Results indicated:
  1. Concordia was a poor location due to heavy pedestrian usage and also proximity to CPR tracks.
  2. Antrim and Tu-Pelo would not largely benefit.
3. The Molson/Concordia intersection will remain signalized but will now include left-turn lanes, right-turn cut-offs, and two through lanes in all directions. Drivers will experience a significant reduction in delay.
4. Antrim/Timberline and Tu-Pelo/Golden Eagle intersections will remain four-way stops as they currently function well.



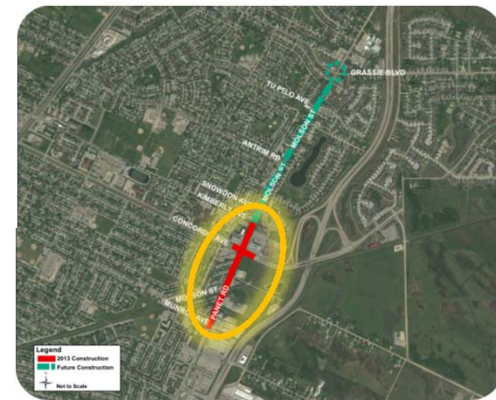
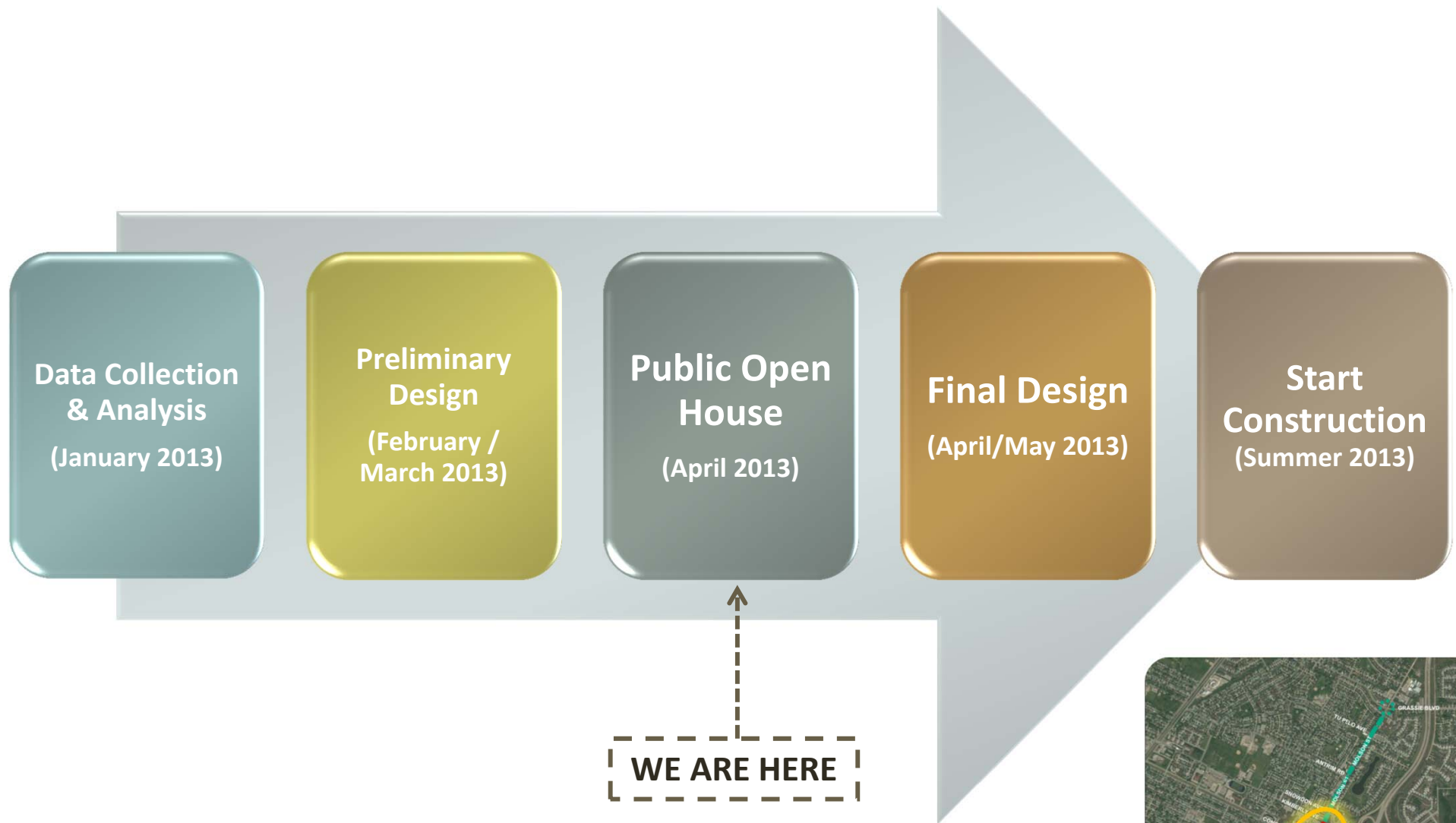
# Land Drainage

- ❑ Roadway and adjacent property is currently drained by ditches.
- ❑ Ditch drainage is undesirable in areas with high pedestrian and parking activity. Ditches restrict access to sidewalks and limit landscaping opportunities.
- ❑ When the street is reconstructed ditches will be eliminated, roadway lowered and run-off will be directed to catchbasins along the curbed roadway.



# Timeline

## Munroe Ave. to Kimberly Ave.





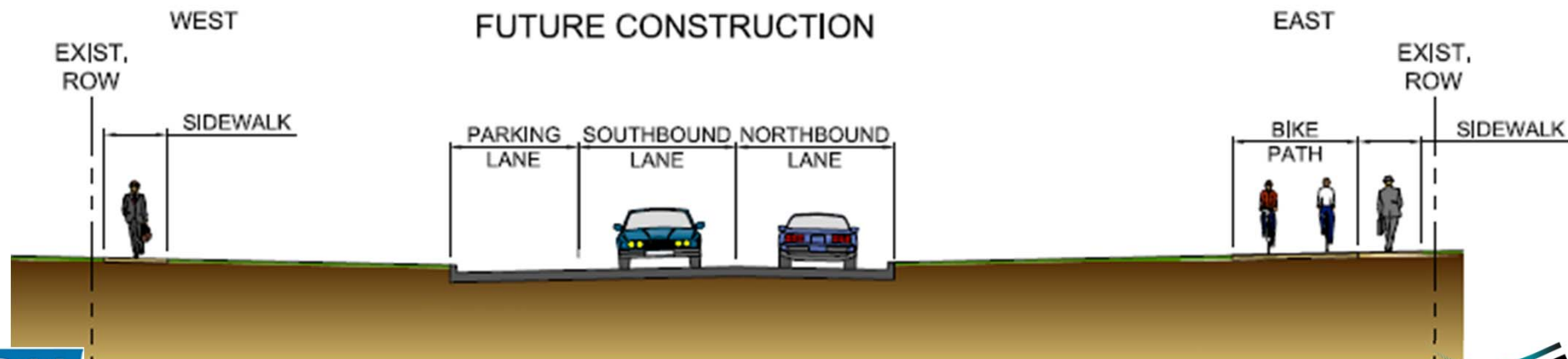
# Future Construction

## Molson Street Between Kimberly Avenue and Grassie Boulevard

- ❑ Upgrade Molson Street from its current *rural ditch* cross section to an *urban curb and gutter* cross-section.
- ❑ When the recently renewed asphalt pavement is due for replacement it will be replaced with an urban collector street pavement with curbs. A separate bike path will provide connectivity to Chief Peguis Trail.

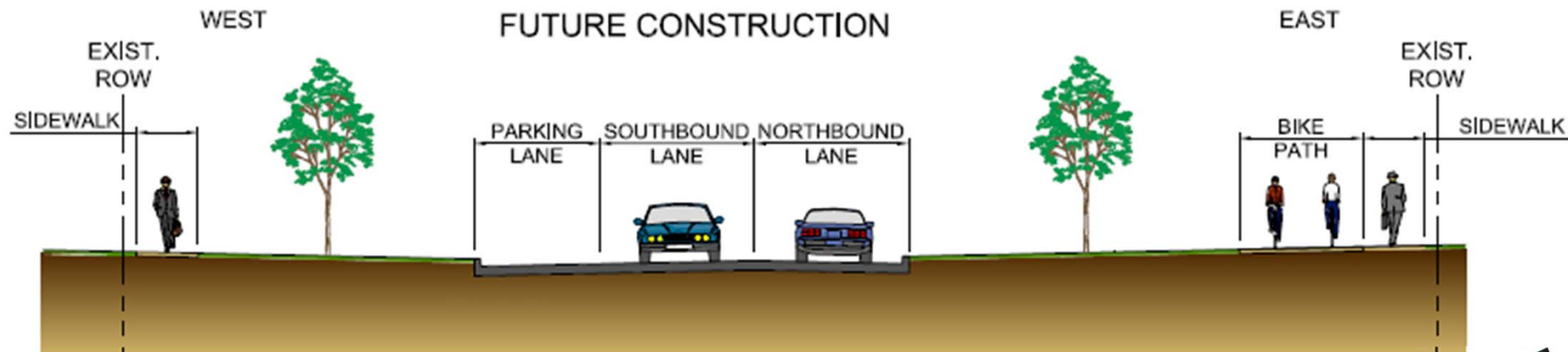


Molson St. at Antrim Rd. (looking north)



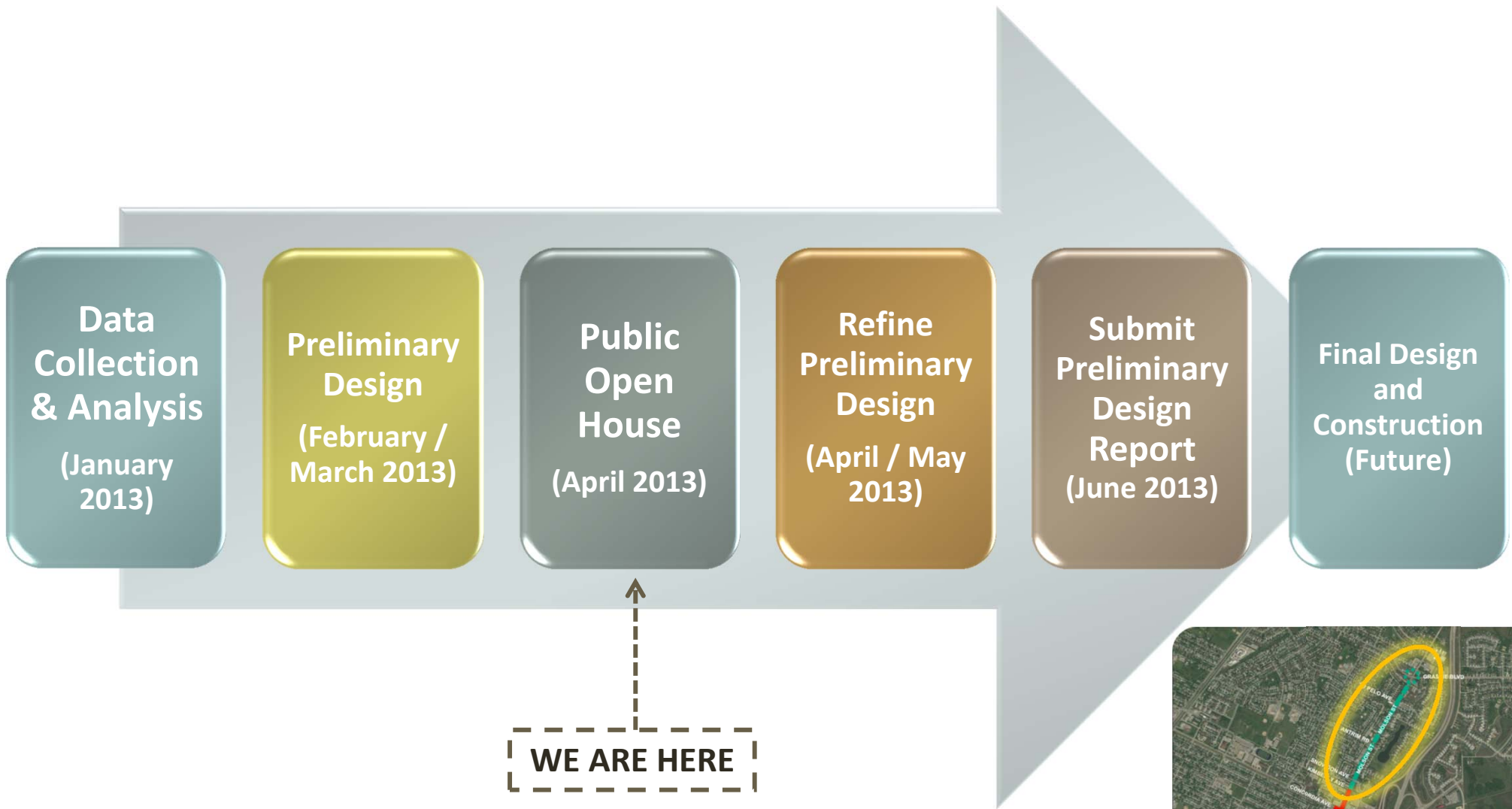
# Parking North of Snowdon Avenue

- ❑ Portions of Molson Street currently allow parking on shoulder.
- ❑ There is a demand for parking.
- ❑ Poor accessibility due to gravel shoulders and ditches.
- ❑ Current shoulder will be eliminated and a parking lane provided north of Concordia Avenue between 160 m north of Snowdon Avenue and Grassie Boulevard.



# Timeline

## Kimberly Ave. to Grassie Blvd.





# Issues/Response

## Issues Identified by Stakeholders

### Access

- Difficulties accessing Molson Street from Concordia Hospital
- Property access points that accommodate trucks
- Maintain current access to property and improve condition (ex. steep grades, widening of existing accesses)
- Add additional access points and/or access through centre boulevards



- Median crossing on Concordia will be reconfigured to allow for better access to Molson Street
- Stakeholder communication has resulted in the incorporation of access requirements where possible
- Access points designed to maximize site access and circulation while maintaining traffic flow and improve safety along corridor

### Vulnerable Road Users

- Pedestrian safety for those accessing schools and medical centres



- Vulnerable road users have been considered from the start of this project and universal design concepts have been incorporated into the design as follows:
  - Detectable warning tiles
  - Curb extensions (bump outs)
  - Ramp curbs
  - Crosswalks

### Active Transportation

- Connectivity to surrounding cycling networks
- Separation of AT from road/parking
- Stop signs on AT path and raised crossings at intersection/driveways for safety
- Median crossings



- Active Transportation has been considered from the start of the design study
- Input from meetings with Active Transportation groups has been incorporated
- Safety for pedestrians and cyclists is part of the design criteria

### Construction Impacts



- Some delays are expected during construction as a result of slower traffic speed and potential lane realignments
- Roadway traffic volumes analysis determined that one lane northbound and southbound will accommodate traffic movements
- The construction staging plan accommodates traffic flow and turning movements throughout the construction horizon
- Access to businesses/landowner property will be maintained throughout construction

Thank you for attending, please fill out  
a comment form before you leave.

For further information on the project, please visit the City of  
Winnipeg's website at <http://winnipeg.ca/PanetMolson>

Or Contact

Call 311 or email [311@winnipeg.ca](mailto:311@winnipeg.ca)

