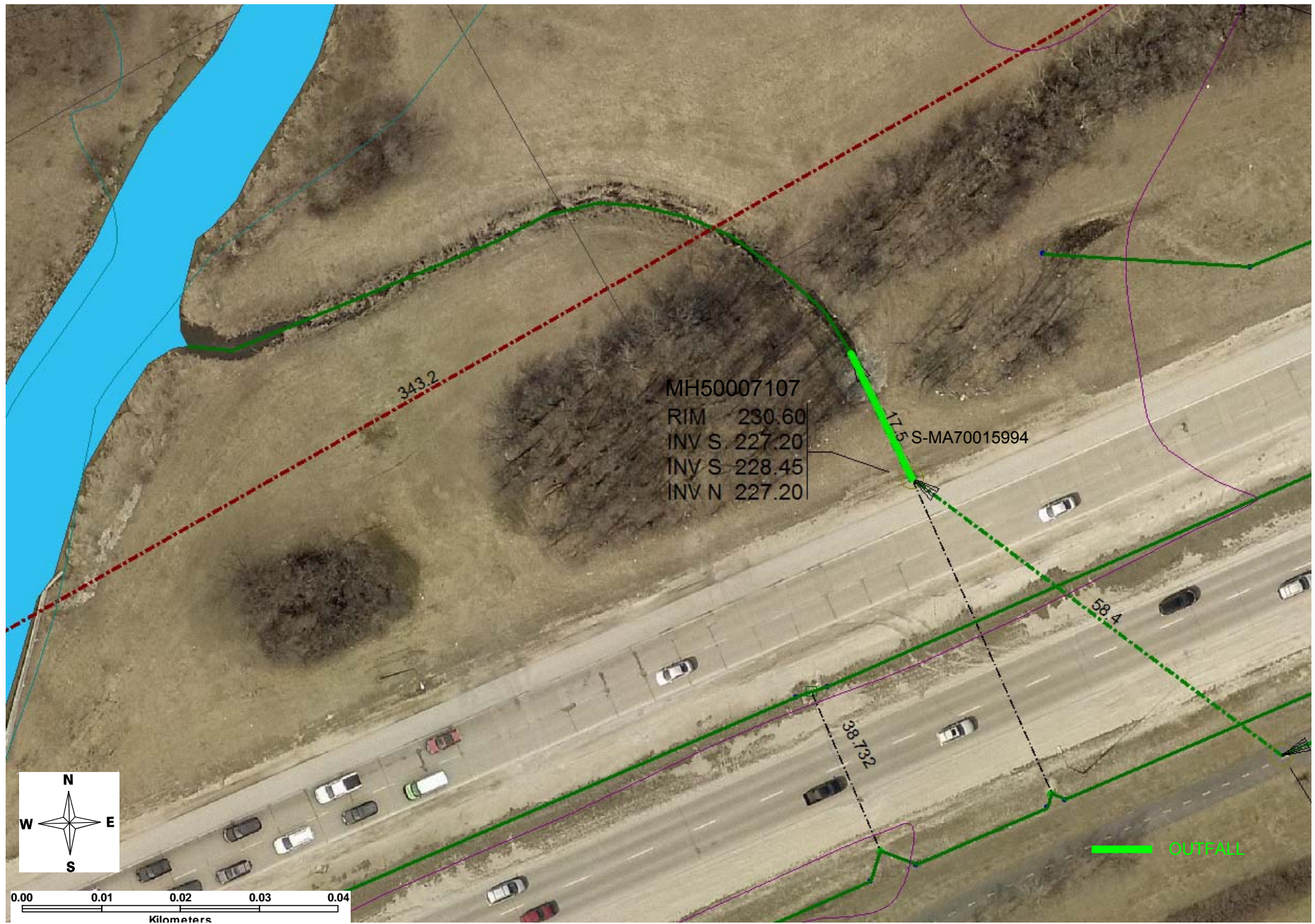


APPENDIX B – OUTFALL GENERAL LOCATION MAPS AND SITE SPECIFIC SUPPORTING DOCUMENTATION

BISHOP GRANDIN OUTFALL – (S-MA70015994)

**800 MILLIMETER DIAMETER LAND DRAINAGE SEWER OUTFALL LOCATED EAST OF ST. ANNES
ROAD AT SEINE RIVER**

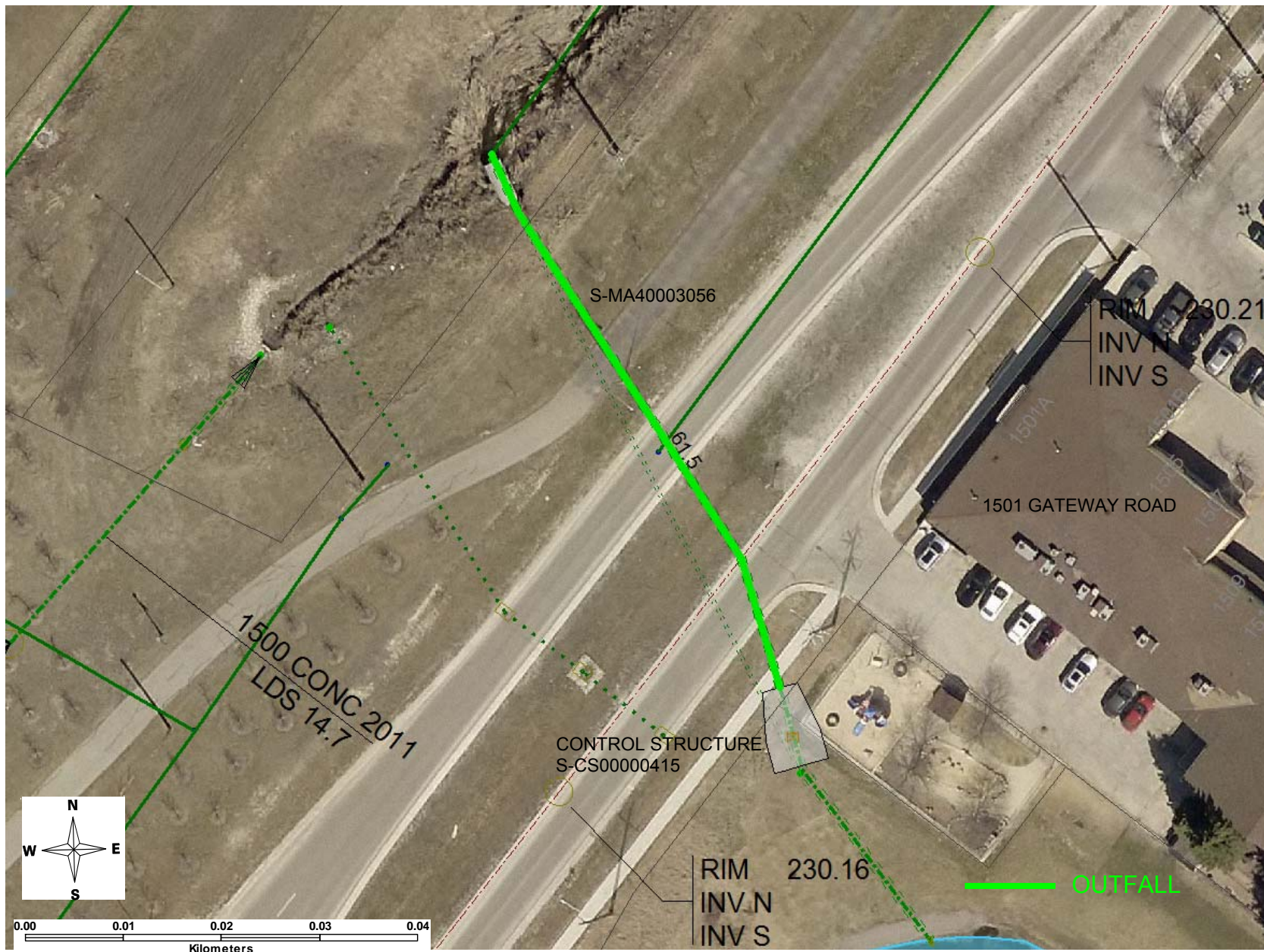
BISHOP GRANDIN OUTFALL - (S-MA70015994)



GATEWAY ROAD OUTFALL – (S-MA40003056)

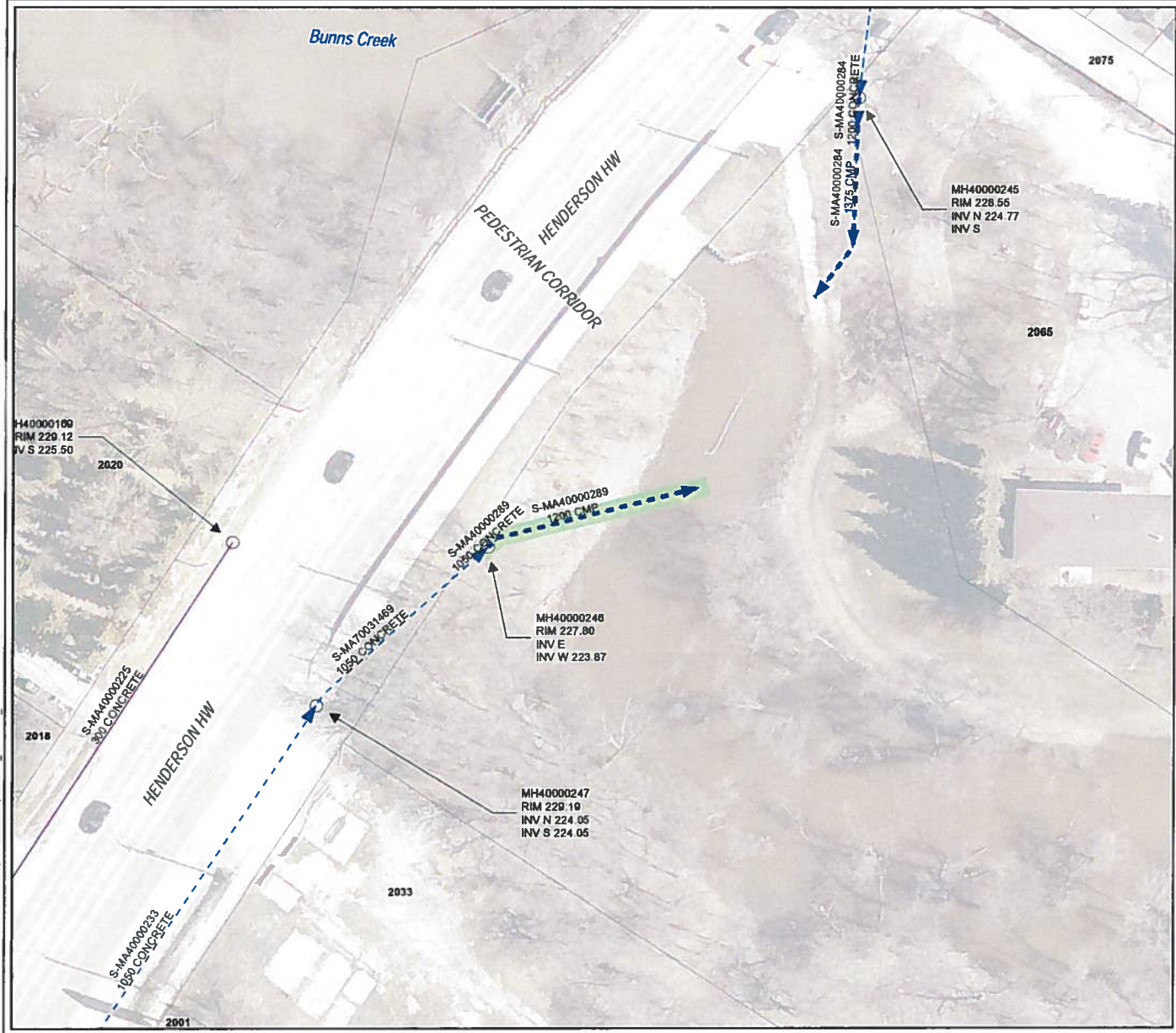
**1825 MILLIMETER DIAMETER LAND DRAINAGE SEWER OUTFALL LOCATED ADJACENT TO 1501
GATEWAY ROAD AT BUNNS CREEK**

GATEWAY ROAD OUTFALL - (S-MA40003056)



HENDERSON HIGHWAY OUTFALL – (S-MA40000289)

**1200 MILLIMETER DIAMETER LAND DRAINAGE SEWER OUTFALL LOCATED ADJACENT TO 2033
HENDERSON HIGHWAY AT BUNNS CREEK**

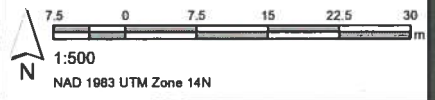


- LEGEND**
- LDS
 - WWS
 - SEWER MANHOLE

SITE CONSIDERATIONS:

KEY CONTACTS:

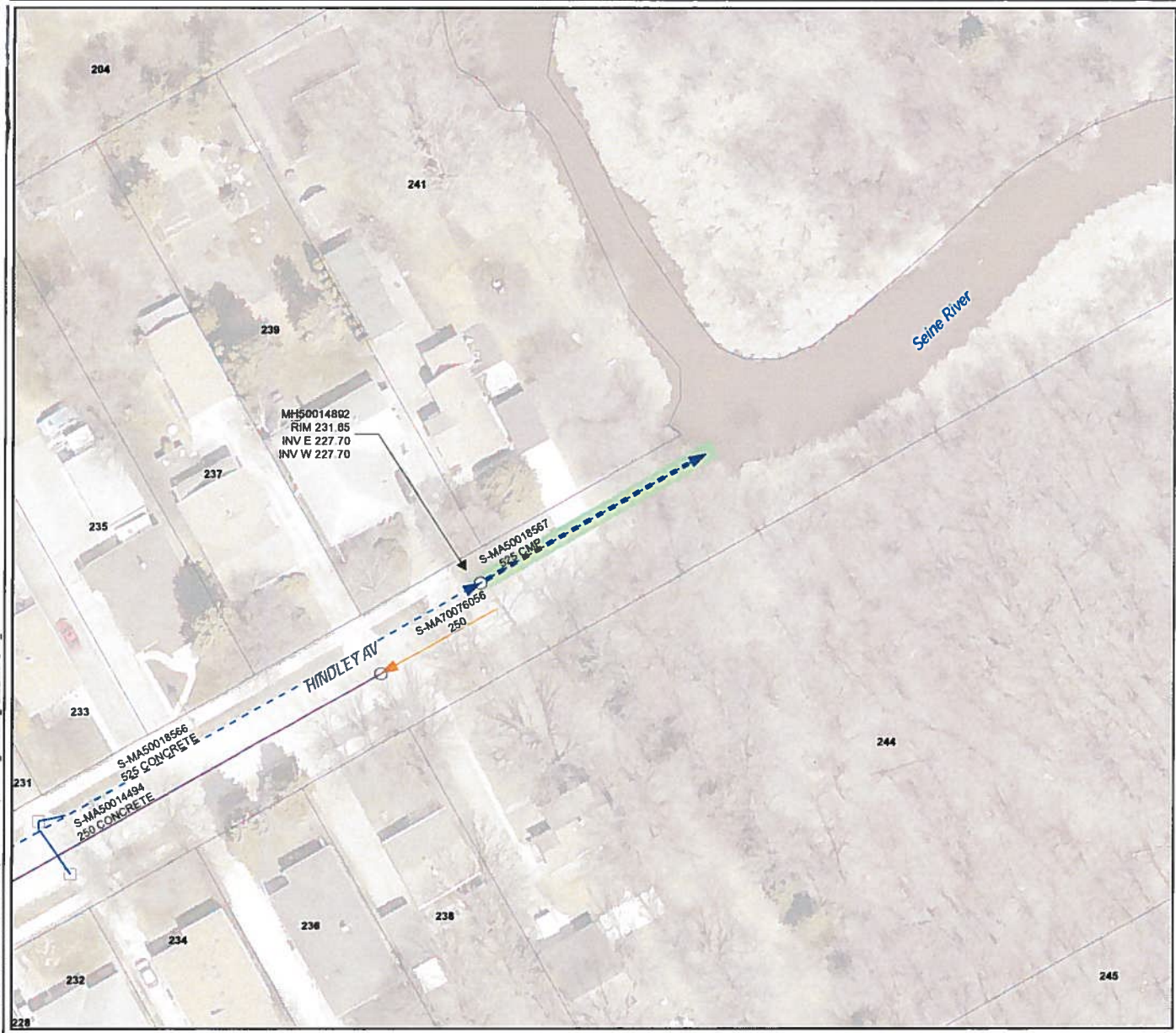
AFFECTED RESIDENTS:



Outfall Asset Number: S-MA40000289 - 27.52m
Upstream Sewer Asset Number: None - 0m
Upstream Manhole Coordinates: 638412.6167E, 5635794.7272N
Location: 2065 HENDERSON HWY

HINDLEY AVENUE OUTFALL – (S-MA50018567)

**525 MILLIMETER DIAMETER LAND DRAINAGE SEWER OUTFALL LOCATED AT THE EAST END
OF HINDLEY AVENUE AT SEINE RIVER**

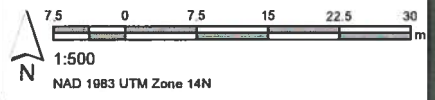


- LEGEND**
- CS
 - LDS
 - WWS
 - CB Lead
 - SEWER MANHOLE
 - CATCH BASIN

SITE CONSIDERATIONS:

KEY CONTACTS:

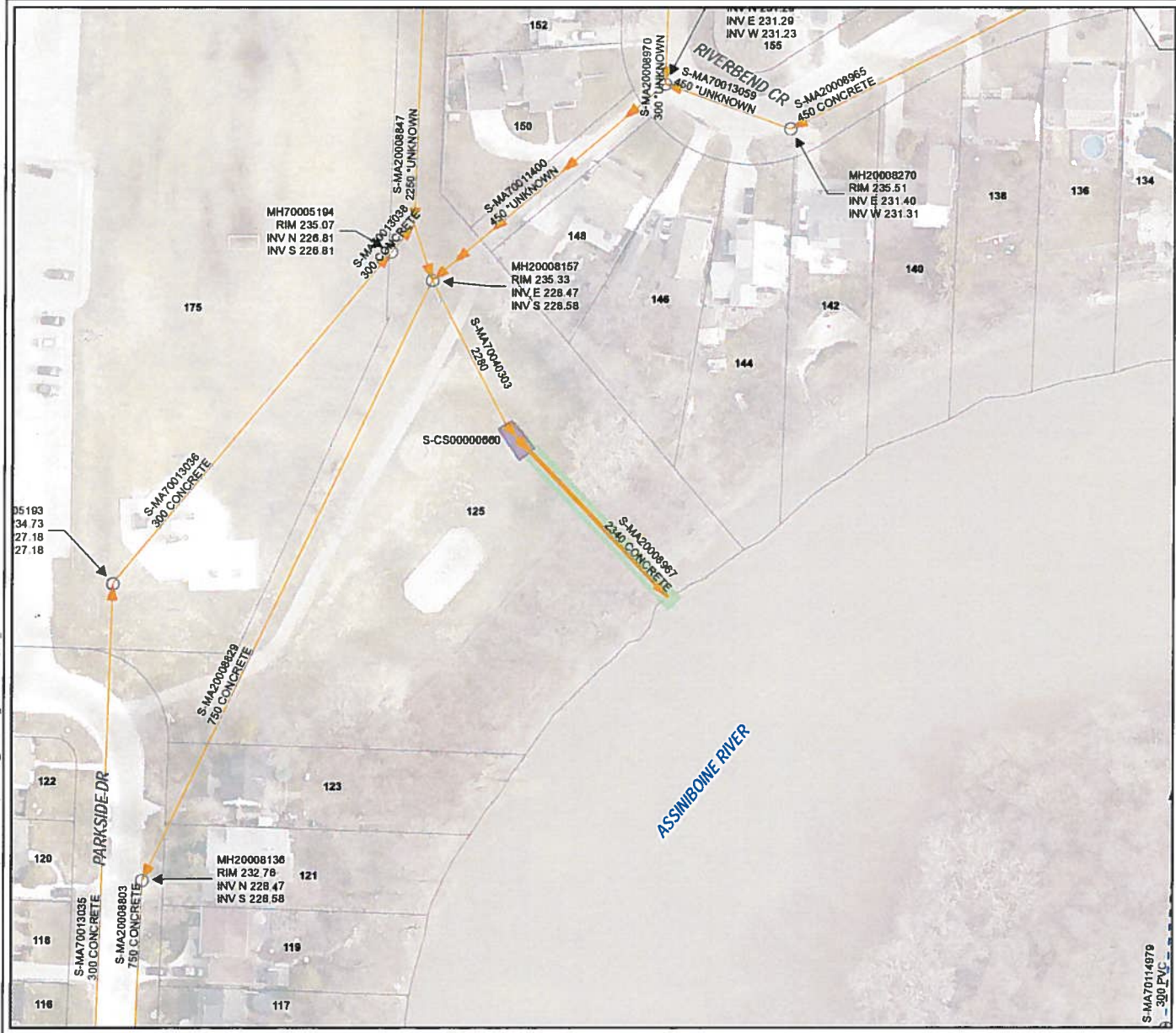
AFFECTED RESIDENTS:



Outfall Asset Number: S-MA50018567 - 32.42m
Upstream Sewer Asset Number: None - 0m
Upstream Manhole Coordinates: 637182.0943E, 5523237.7602N
Location: 241 HINDLEY AVE

JAE EADIE PARK OUTFALL – (S-MA20008967)

**2340 MILLIMETER DIAMETER COMBINED SEWER OUTFALL LOCATED BEHIND 146 RIVERBEND
CRESCENT AT ASSINIBOINE RIVER**



- LEGEND**
- CS
 - LDS
 - SEWER MANHOLE
 - CONTROL STRUCTURE

SITE CONSIDERATIONS:
 GATED PATH FROM RIVERBEND CR.
 LOCKED BOLLARD AT PARKSIDE DRIVE. CONTROL STRUCTURE ACCESS REQUIRED.

KEY CONTACTS:
 JAE EADIE PARK CONTACT: BOB MOSKAL: (204) 986-6635

ERIC WEISKE (SUPERVISOR OF REGIONAL WASTEWATER)
 Office: (204) 986-4788
 Work Cell: (204) 619-0520
 Email: eweiske@winnipeg.ca
 JOSE ALTOVEROS (COLLECTION SYSTEM MAINTENANCE TECHNICIAN)
 Office: (204) 986-7948
 Email: jaltover@winnipeg.ca

AFFECTED RESIDENTS:




Outfall Asset Number: S-MA20008967 - 41.26m
 Upstream Sewer Asset Number: None - 0m
 Upstream Manhole Coordinates: 628711.4598E, 5526506.0328N
 Location: 125 PARKSIDE DR

NORTH DRIVE OUTFALL – (S-MA60013422)

**1200 MILLIMETER DIAMETER LAND DRAINAGE SEWER OUTFALL LOCATED NORTH OF
WILDWOOD PARK B AT RED RIVER**



LEGEND

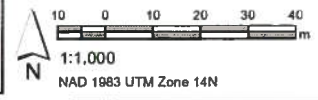
-  LDS
-  WWS
-  CB Lead
-  SEWER MANHOLE
-  CATCH BASIN
-  CONTROL STRUCTURE

SITE CONSIDERATIONS:
CONTROL STRUCTURE ACCESS
REQUIRED

KEY CONTACTS:
ERIC WEISKE (SUPERVISOR OF
REGIONAL WASTEWATER)
Office: (204) 986-4788
Work Cell: (204) 619-0520
Email: eweiske@winnipeg.ca

JOSE ALTOVEROS (COLLECTION
SYSTEM MAINTENANCE TECHNICIAN)
Office: (204) 986-7948
Email: jaltover@winnipeg.ca

AFFECTED RESIDENTS:

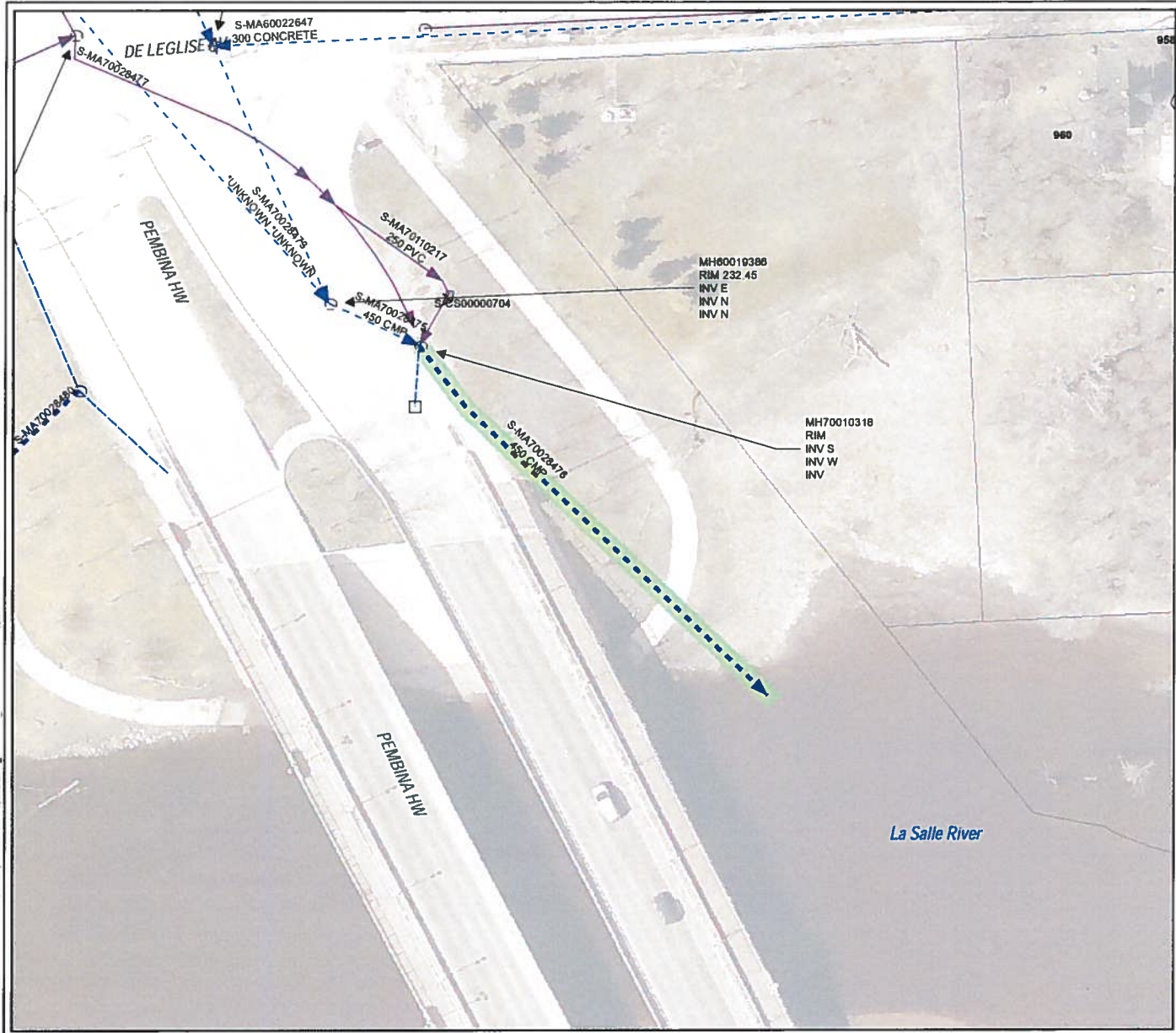


Outfall Asset Number: S-MA60013422 - 129.89m
Upstream Sewer Asset Number: None - 0m
Upstream Manhole Coordinates: 634691.8165E, 5523409.6953N
Location: WILDWOOD B PK & NORTH DR



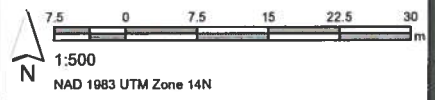
PEMBINA HIGHWAY OUTFALL – (S-MA70028476)

**450 MILLIMETER DIAMETER LAND DRAINAGE SEWER OUTFALL LOCATED SOUTH OF DE
L'EGLISE AVENUE AT LA SALLE RIVER**



- LEGEND**
- ▶ LDS
 - ▶ WWS
 - - - CB Lead
 - SEWER MANHOLE
 - CATCH BASIN
 - ⊗ SEWER VALVE
 - CONTROL STRUCTURE

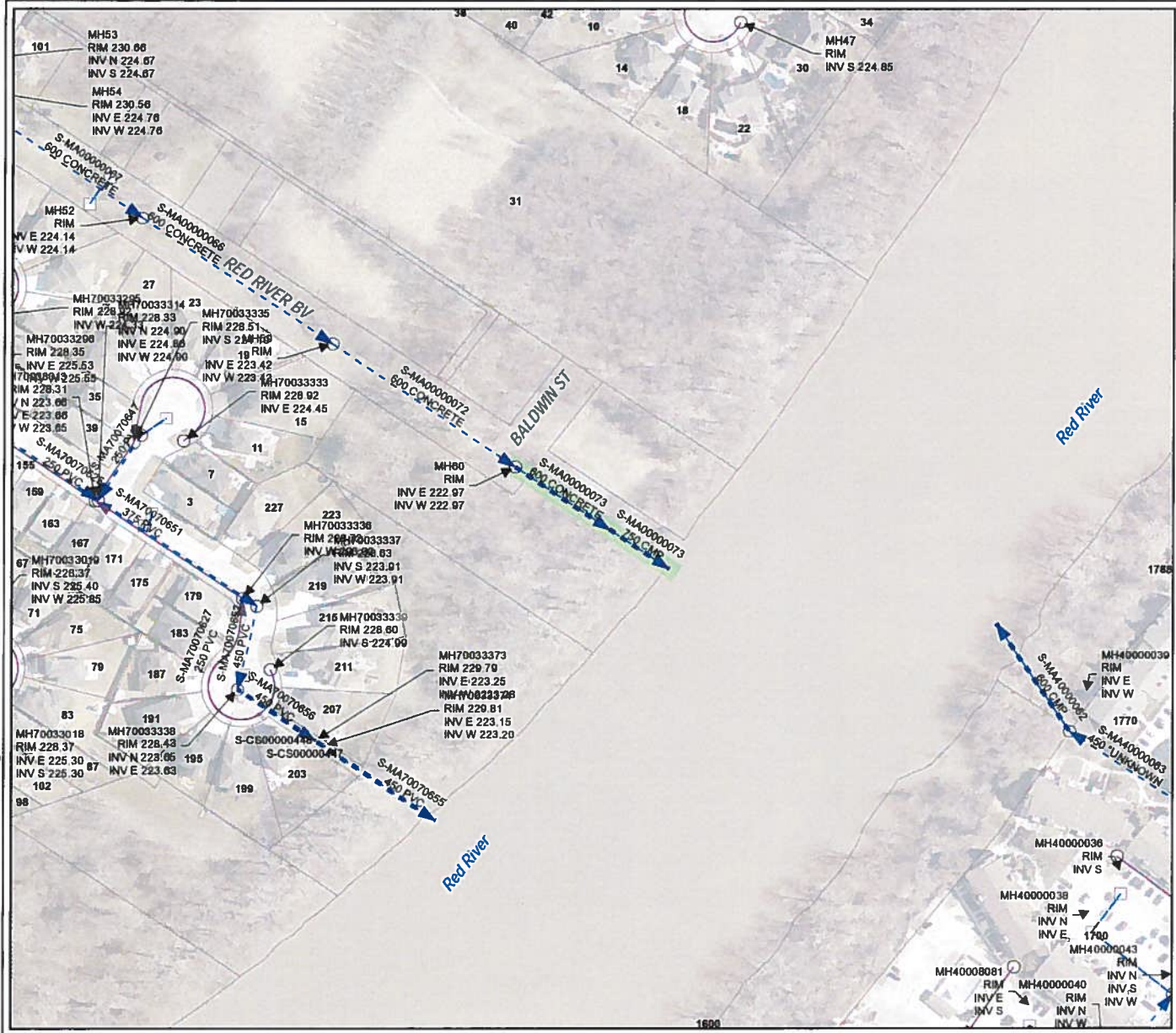
SITE CONSIDERATIONS:
TRAFFIC MANAGEMENT
REQUIREMENTS



Outfall Asset Number: S-MA70028476 - 61.8m
 Upstream Sewer Asset Number: None - 0m
 Upstream Manhole Coordinates: 633045.4465E, 5514061.8585N
 Location: 3564 PEMBINA HWY

RED RIVER BOULEVARD OUTFALL – (S-MA00000073)

**750 MILLIMETER DIAMETER LAND DRAINAGE SEWER OUTFALL LOCATED AT THE EAST END
OF RED RIVER BOULEVARD AT RED RIVER**



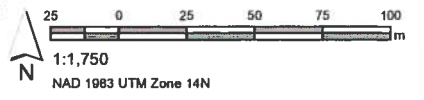
LEGEND

- LDS
- WWS
- CB Lead
- SEWER MANHOLE
- CATCH BASIN
- CONTROL STRUCTURE

SITE CONSIDERATIONS:
ACCESS VIA RED RIVER BLVD

KEY CONTACTS:

AFFECTED RESIDENTS:

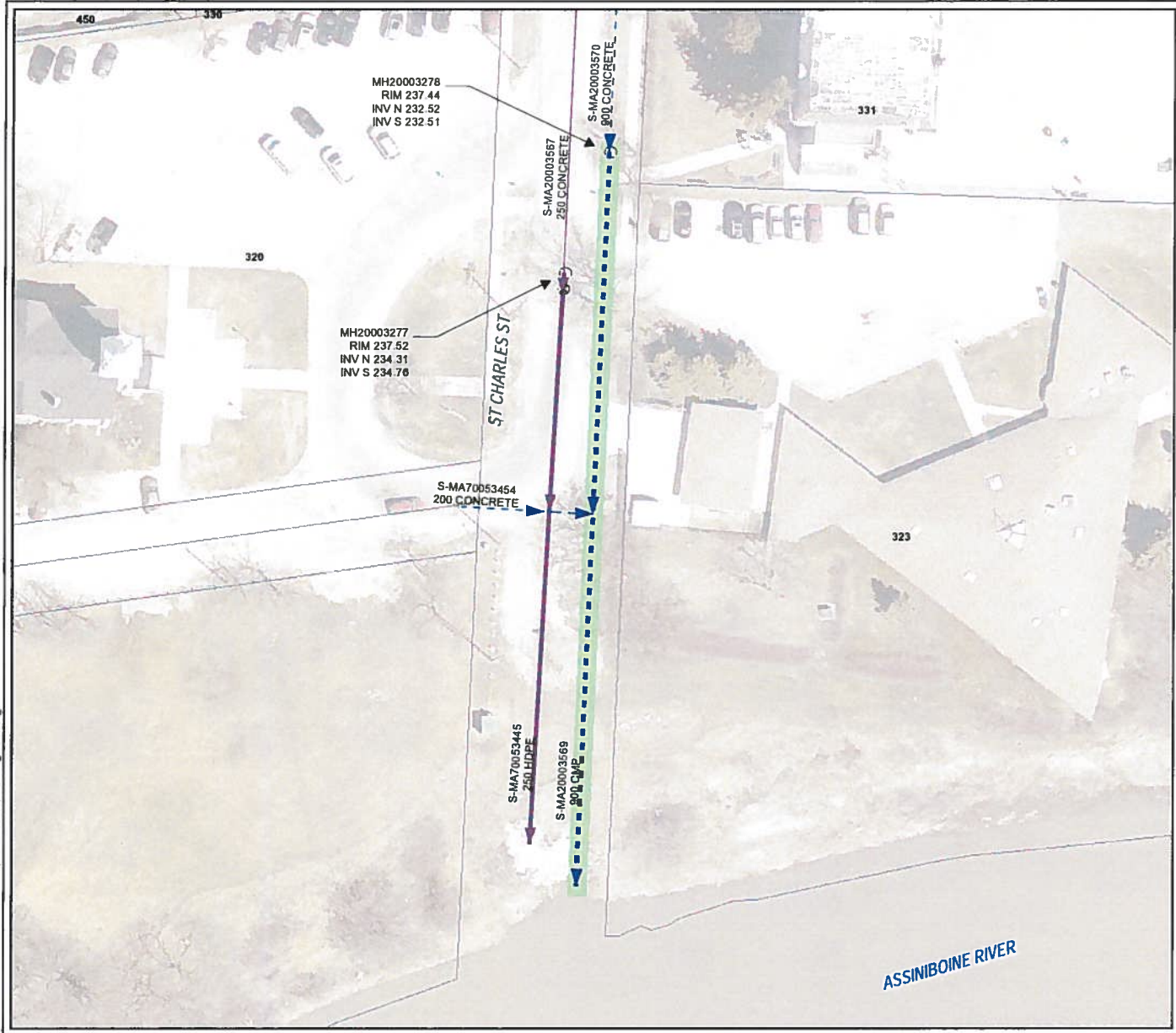


Outfall Asset Number: S-MA0000073 - 81m
 Upstream Sewer Asset Number: None - 0m
 Upstream Manhole Coordinates: 637529.7948E, 5535310.7804N
 Location: 219 MCBETH GROVE



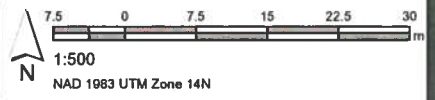
ST. CHARLES STREET OUTFALL – (S-MA20003569)

**900 MILLIMETER DIAMETER LAND DRAINAGE SEWER OUTFALL LOCATED AT THE SOUTH END
OF ST. CHARLES STREET AT ASSINIBOINE RIVER**



- LEGEND**
- ▶ LDS
 - ▶ WWS
 - SEWER MANHOLE
 - ⊗ SEWER VALVE

SITE CONSIDERATIONS:



Issue Status: Tender

Outfall Asset Number: S-MA20003569 - 92.03m
 Upstream Sewer Asset Number: None - 0m
 Upstream Manhole Coordinates: 620657.3030E, 5625948.6722N
 Location: 330 ST CHARLES

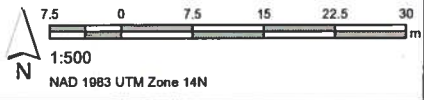
VALLEY VIEW DRIVE OUTFALL – (S-MA20000078)

**400 MILLIMETER DIAMETER LAND DRAINAGE SEWER OUTFALL LOCATED BETWEEN 40 AND 38
VALLEY VIEW DRIVE AT STURGEON CREEK (ABANDONMENT)**



- LEGEND**
- ▶ LDS
 - ▶ WWS
 - - - CB Lead
 - SEWER MANHOLE
 - CATCH BASIN

SITE CONSIDERATIONS:



Outfall Asset Number: S-MA20000078 - 59.1m
 Upstream Sewer Asset Number: None - 0m
 Upstream Manhole Coordinates: 623041.0928E, 5627969.0077N
 Location: 38 VALLEY VIEW DR

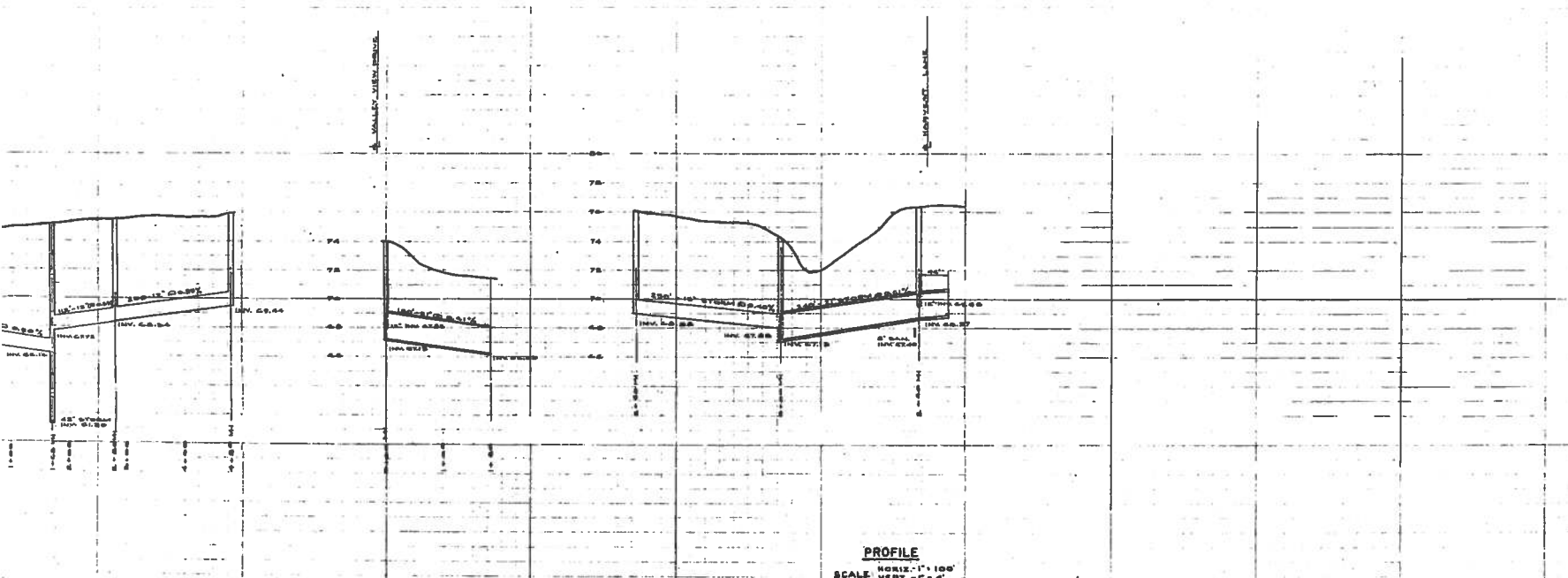
VALLEY VIEW DRIVE NEW OUTFALL

REROUTE THE LAND DRAINAGE SEWER ON VALLEY VIEW DRIVE AND CONSTRUCT A NEW OUTFALL LOCATED BETWEEN 46 AND 48 VALLEY VIEW DRIVE AT STURGEON CREEK

PROPOSED CONSTRUCTION DRAWING OF THE CURRENT LAND DRAINAGE SYSTEM ON VALLEY VIEW DRIVE



PLAN
SCALE 1" = 100'



PROFILE
SCALE HORIZ. 1" = 100'
VERT. 1" = 4'

(S) A 25

DESCRIPTION	LOCATION
SANITARY SEWER & M.H.	
STORM SEWER & M.H.	
CATCH BASIN	
WATER MAIN	
GATE VALVE, CROSS OR TEE	
FIRE HYDRANT (BY LINE)	
PIPE VALVE	
PIPE (SUPPORT) (BY LINE)	
VENTILATION PIPING	
CURB STOP	

MUNICIPALITY OF ASSINI
HERITAGE PARK SUBDIVISION
PROPOSED STORM SEWER
VALLEY VIEW DRIVE
FROM NESS AVE. TO VALLEY VIEW

DRAWN BY: J.S.	INCHES: 1/8" = 1'
CHECKED BY: J.S.	DATE: 10/1/88
DESIGNED BY: J.S.	CITY: CALDARY - ALBERTA
LAYOUT BY: J.S.	PROJECT NO. 13
DATE: 10/1/88	DRAWING NO. 2

SCALE: AS SHOWN

(S) A