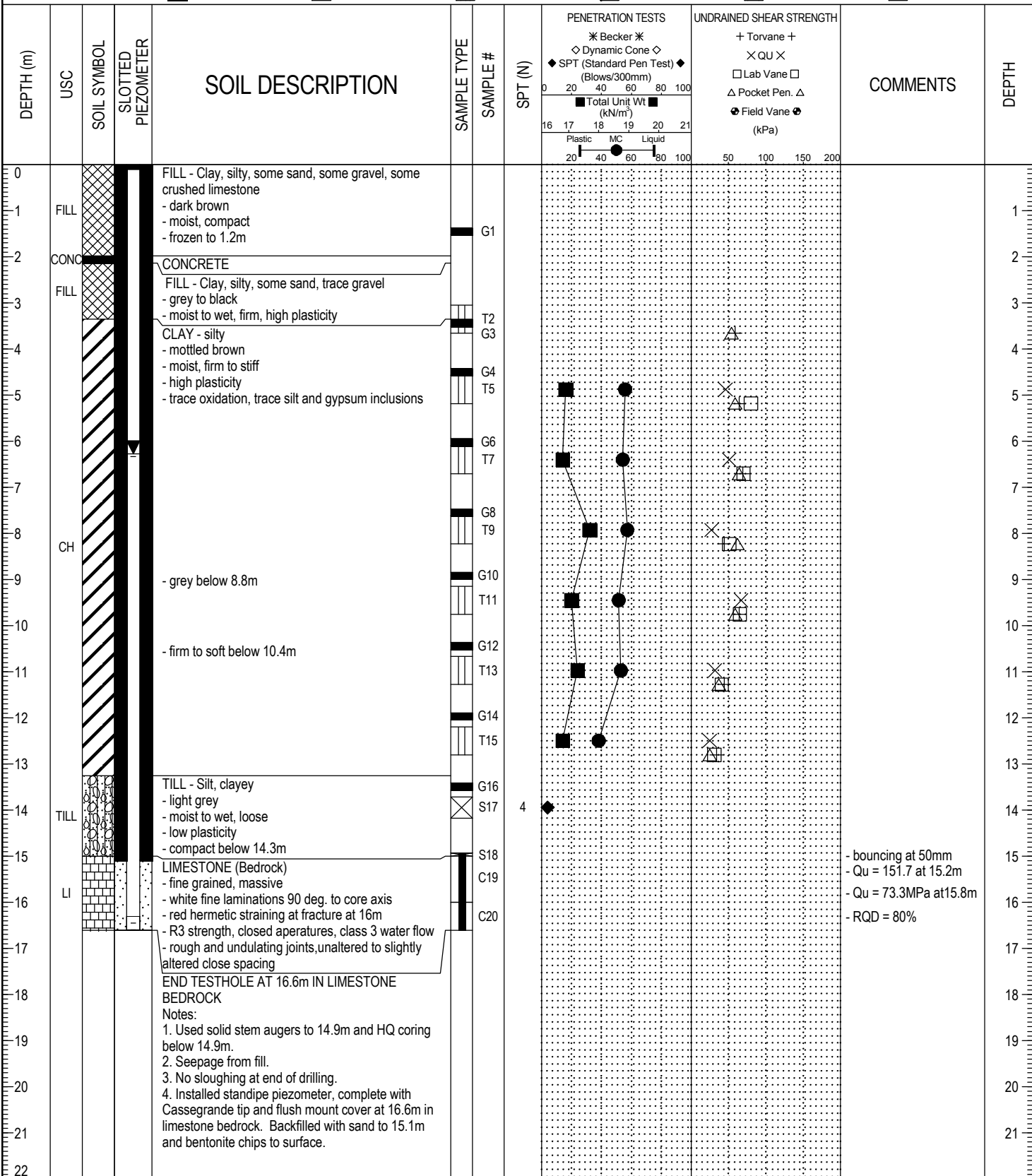


APPENDIX 'A1'

CURRENT TESTHOLE REPORTS

PROJECT: Southwest Transit Corridor		CLIENT: Dillon Consulting		TESTHOLE NO: TH-1	
LOCATION: Retaining wall at South-East end of underpass N 1,684,291.3 E 193,125.5				PROJECT NO.: F505-444	
CONTRACTOR: Paddock Drilling Ltd.		METHOD: 125mm Solid Stem Augers and HQ coring		ELEVATION (m):	
SAMPLE TYPE	GRAB	SHELBY TUBE	SPLIT SPOON	BULK	NO RECOVERY
BACKFILL TYPE	BENTONITE	GRAVEL	SLOUGH	GROUT	CUTTINGS
					SAND

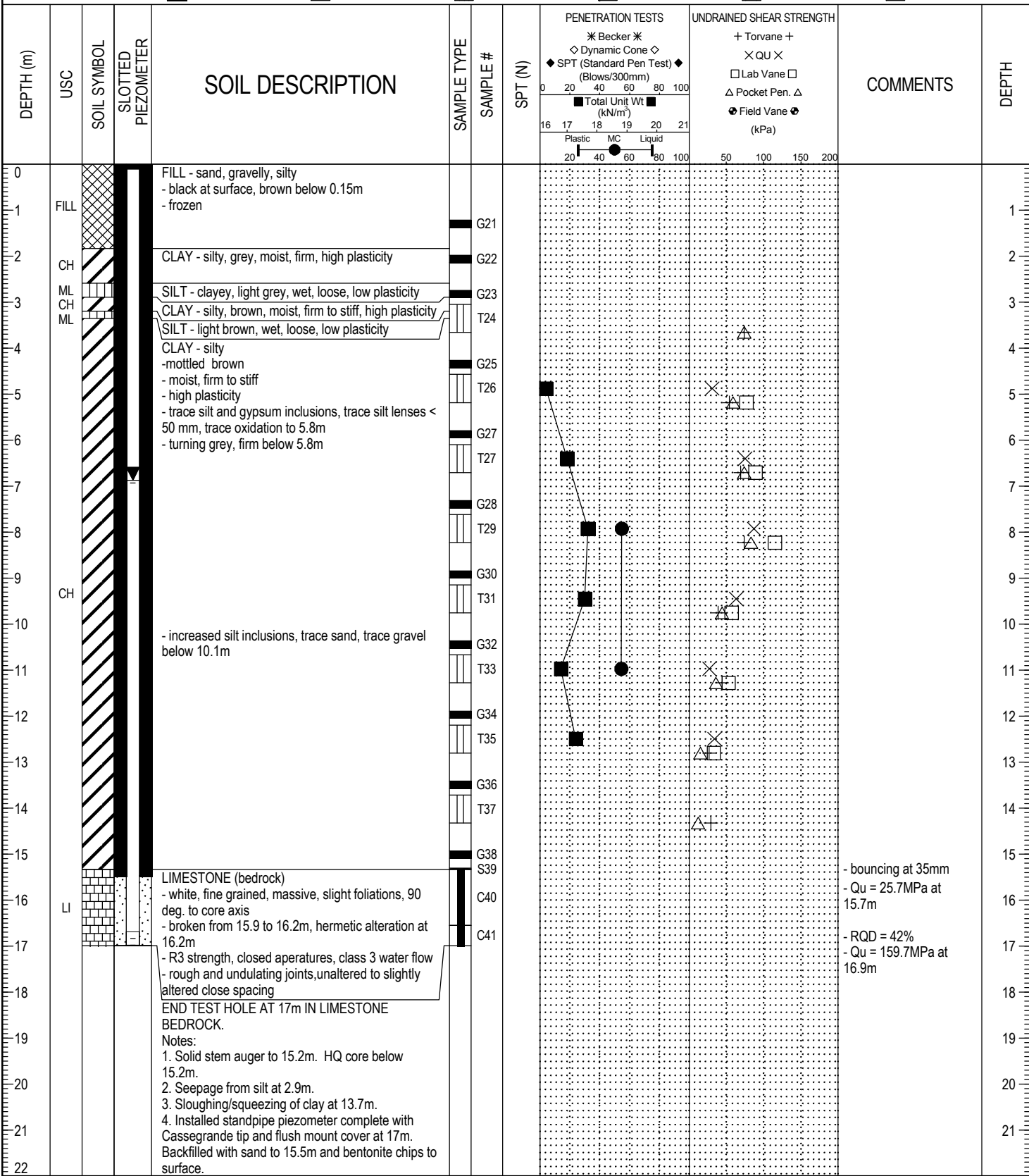


LOG OF TEST HOLE 26032009 BRT TEST HOLE LOGS.GPJ UMA WINN.GDT 5/14/09



LOGGED BY: KT	COMPLETION DEPTH: 16.61 m
REVIEWED BY:	COMPLETION DATE: 3/24/09
PROJECT ENGINEER: Faris Khalil	Page 1 of 1

PROJECT: Southwest Transit Corridor		CLIENT: Dillon Consulting		TESTHOLE NO: TH-2			
LOCATION: Retaining wall at North-West end of underpass N 1,684,335.2 E 193,098.4				PROJECT NO.: F505-444			
CONTRACTOR: Paddock Drilling Ltd.		METHOD: 125mm Solid Stem Augers and HQ coring					
ELEVATION (m):							
SAMPLE TYPE		GRAB	SHELBY TUBE	SPLIT SPOON	BULK	NO RECOVERY	CORE
BACKFILL TYPE		BENTONITE	GRAVEL	SLOUGH	GROUT	CUTTINGS	SAND

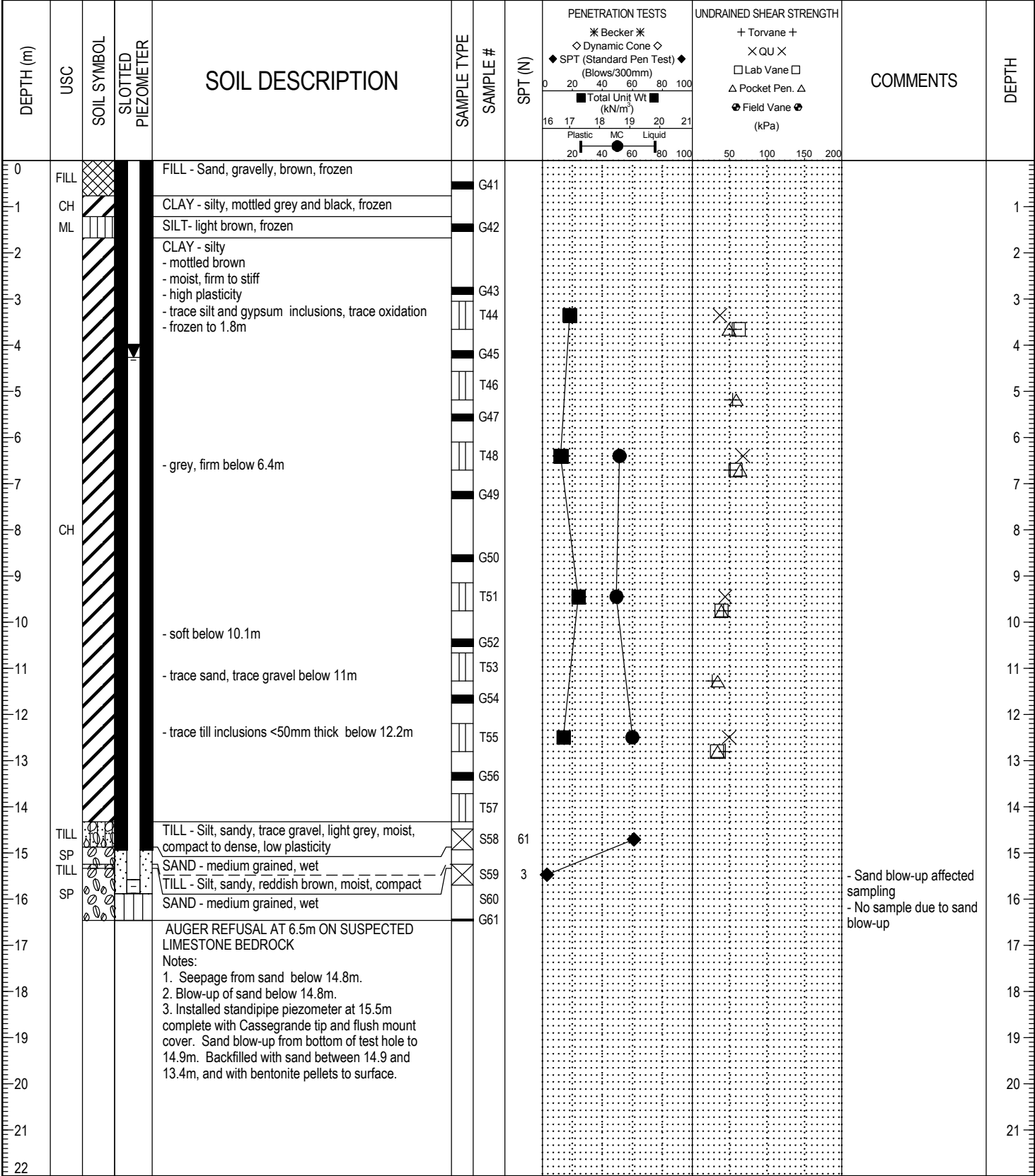


LOG OF TEST HOLE 26032009 BRT TEST HOLE LOGS.GPJ UMA WINN.GDT 5/14/09



LOGGED BY: KT	COMPLETION DEPTH: 16.99 m
REVIEWED BY:	COMPLETION DATE: 3/25/09
PROJECT ENGINEER: Faris Khalil	Page 1 of 1

PROJECT: Southwest Transit Corridor	CLIENT: Dillon Consulting	TESTHOLE NO: TH-3				
LOCATION: At East abutment of proposed bridge N 1,684,398.0 E 193,114.3		PROJECT NO.: F505-444				
CONTRACTOR: Paddock Drilling Ltd.	METHOD: 125mm Solid Stem Augers	ELEVATION (m):				
SAMPLE TYPE	GRAB	SHELBY TUBE	SPLIT SPOON	BULK	NO RECOVERY	CORE
BACKFILL TYPE	BENTONITE	GRAVEL	SLOUGH	GROUT	CUTTINGS	SAND



LOG OF TEST HOLE 26032009 BRT TEST HOLE LOGS.GPJ UMA WINN.GDT 5/14/09



LOGGED BY: KT	COMPLETION DEPTH: 16.46 m
REVIEWED BY:	COMPLETION DATE: 3/26/09
PROJECT ENGINEER: Faris Khalil	Page 1 of 1