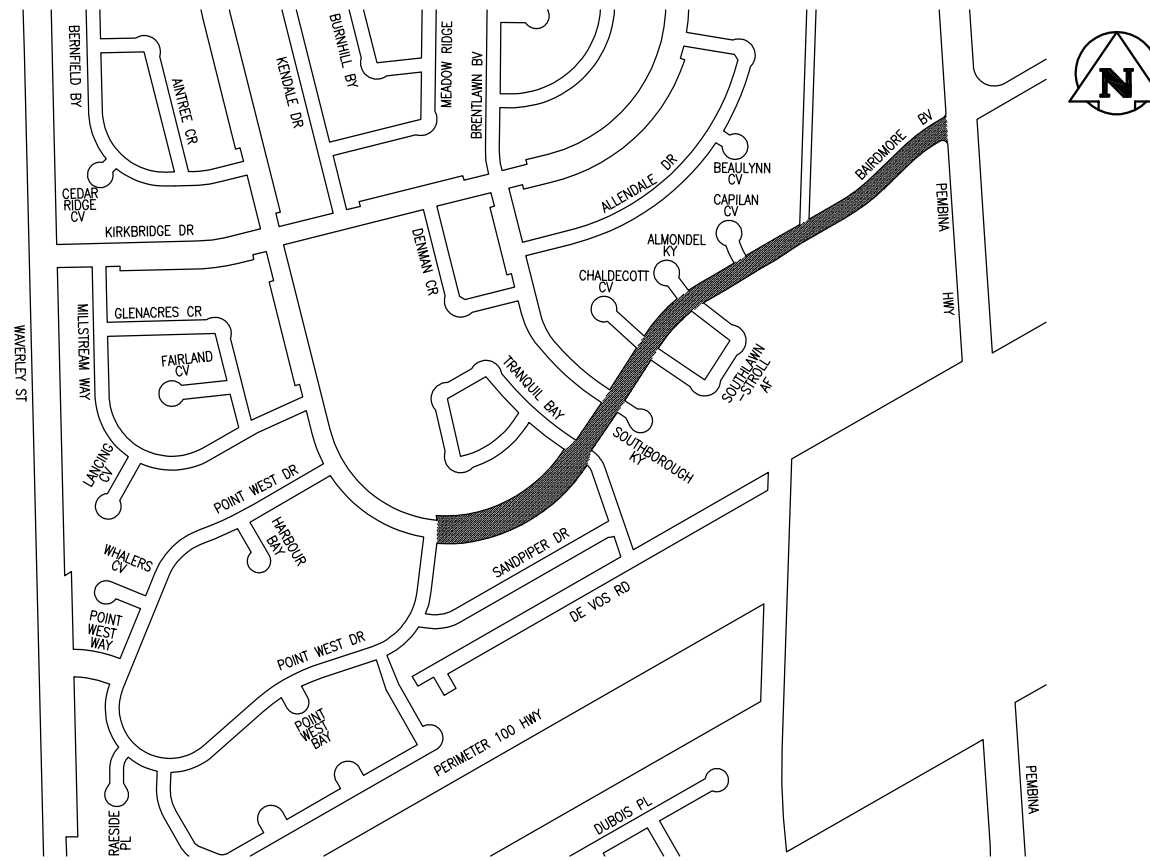
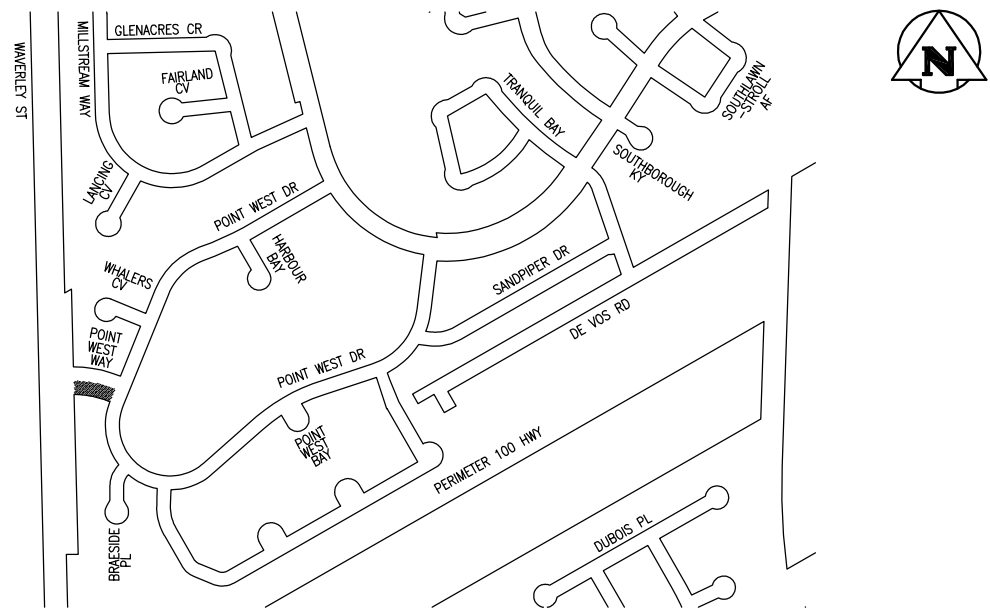


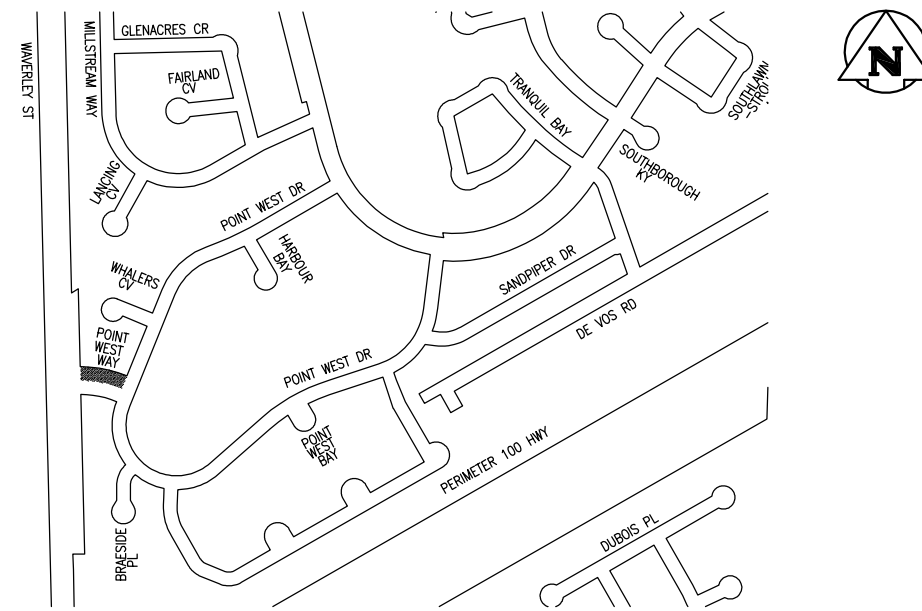
BAIRDMORE BLVD
FROM POINT WEST DRIVE – SOUTH LEG TO KIRKBRIDGE DR.



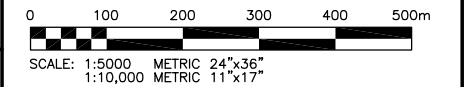
BAIRDMORE BLVD
FROM PEMBINA HWY TO POINT WEST DRIVE – SOUTH LEG



POINT WEST WAY EAST BOUND
FROM WAVERLEY ST. TO POINT WEST DRIVE



POINT WEST WAY WEST BOUND
FROM POINT WEST DRIVE TO WAVERLEY STREET



| NO. | D / M / Y | DESCRIPTION | BY |
|------------------------------|-----------|--|----|
| REVISIONS / ISSUE | | | |
| A | | A. SECTION LETTER OR DETAIL NUMBER IS DRAWN | A |
| B | | B. DRAWING WHERE SECTION OR DETAIL WAS INDICATED | - |
| - SECTION OR DETAIL SHOWN ON | | | |



CLIENT: **THE CITY OF WINNIPEG**
PUBLIC WORKS DEPARTMENT

PROJECT: **2010 THIN BITUMINOUS OVERLAY (T.B.O.) PROGRAM**

DWG. DESCRIPTION: **BAIRDMORE BOULEVARD AND POINT WEST WAY**

ENG. STAMP: DESIGNED BY: DRAWN BY: DMW
 CHECKED: CHECKED:

APPROVED: SCALE: AS NOTED DATE: MAR/2010

10-0107-05 SK01

CLIENT DWG. NO. REV: **A**