

- REFERENCE NOTES**
- PAVEMENT DIMENSIONS ARE TO BACK OF CURB
 - BASELINE IS CENTRE LINE RIGHT-OF-WAY
 - PROPERTY LINES OBTAINED FROM CITY OF WINNIPEG L.B.I.S., AND NO SCALE FACTOR WAS APPLIED
 - REFER TO AECOM FIELD BOOK NO. 4999

- CONSTRUCTION NOTES**
- CONSTRUCT NEW ASPHALTIC PAVEMENT OVERLAY TYPE 1A (85mm AVG.)
 - REMOVE EXISTING CONCRETE PAVEMENT AND CONSTRUCT NEW 150mm REINFORCED CONCRETE PAVEMENT c/w 85mm ASPHALTIC OVERLAY
 - REMOVE EXISTING CONCRETE PAVEMENT AND INSTALL NEW 150mm REINFORCED CONCRETE PAVEMENT
 - REMOVE EXISTING MOUNTABLE CURB AND CONSTRUCT NEW BARRIER CURB (100mm REVEAL HT, DOWELLED)
 - REMOVE EXISTING MOUNTABLE CURB AND CONSTRUCT NEW MODIFIED BARRIER CURB (150mm HT, DOWELLED)
 - RENEW EXISTING 100mm CONCRETE SIDEWALK
 - CONSTRUCT NEW BARRIER CURB (100mm REVEAL HT, SEPARATE)
 - REMOVE EXISTING MOUNTABLE CURB INLET FRAME AND INSTALL NEW CURB AND GUTTER INLET FRAME, BOX AND GRATED COVER (AP-011 & AP-012)
 - ADJUST EXISTING WATER VALVE TO GRADE
 - REGRADE EXISTING PATIO BLOCKS
 - CONSTRUCT NEW CONCRETE LIP CURB (40mm HT, INTEGRAL)

AECOM
 Certificate of Authorization
 AECOM Canada Ltd.
 No. 4671 Date: _____

METRIC
 WHOLE NUMBERS INDICATE MILLIMETRES
 DECIMALIZED NUMBERS INDICATE METRES

150 mm W.M.	WATERMAIN	150 mm W.M.	HYDRO	— x —	PROFILE
300mm L.D.S.	LAND DRAINAGE SEWER	300mm L.D.S.	M.T.S.	—	WEST GUTTER
250mm W.W.S.	WASTEWATER SEWER	250mm W.W.S.	CONCRETE	—	EAST GUTTER
	MANHOLE		ASPHALT	—	N/W PROPERTY LINE
	CATCH BASIN		PROPERTY LINE	—	S/E PROPERTY LINE
	CATCH PIT		SURVEY BAR	—	
	JUNCTIONS		ELEVATION (235.750)	—	
	CULVERT		TREE	—	
	GAS		SIDEWALK RAMP	—	
EXISTING	LEGEND - PLAN	PROPOSED	CONCRETE SIDEWALK	—	
			FENCE	—	
			EXISTING	—	LEGEND - PROFILE
			PROPOSED	—	PROPOSED

LOCATION APPROVED UNDERGROUND STRUCTURES

SUPV. U/G STRUCTURES COMMITTEE DATE _____

NOTE:
 LOCATION OF UNDERGROUND STRUCTURES AS SHOWN ARE BASED ON THE BEST INFORMATION AVAILABLE. BUT NO GUARANTEE IS GIVEN THAT ALL EXISTING UTILITIES ARE SHOWN OR THAT THE GIVEN LOCATIONS ARE EXACT. CONFIRMATION OF EXISTENCE AND EXACT LOCATION OF ALL SERVICES MUST BE OBTAINED FROM THE INDIVIDUAL UTILITIES BEFORE PROCEEDING WITH CONSTRUCTION.

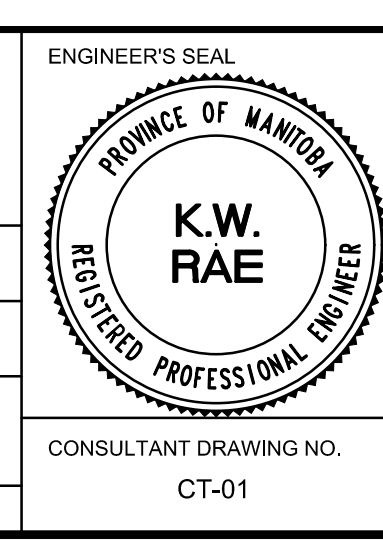
B.M. 41-005
 ELEV. 238.147

S.E. Corner, St. Charles St. & Augier Ave., 10m in front of school, foundation of school, No. 331 St. Charles St., 0.3 m B. & 0.1 m below brick of N.W. Cor. of most W.W. west of school.

0	ISSUED FOR TENDER	04/12/2018	BC
A	ISSUED FOR REVIEW	04/04/2018	BC
NO.	REVISIONS	DATE	BY

AECOM

DESIGNED BY	SF	CHECKED BY	BC/KWR
DRAWN BY	JC	APPROVED BY	
HOR. SCALE:	1:250	RELEASED FOR CONSTRUCTION BY:	
VERTICAL:	1:10	DATE	



THE CITY OF WINNIPEG
 PUBLIC WORKS DEPARTMENT
 ENGINEERING DIVISION

2018 RESIDENTIAL STREET RENEWAL PROGRAM

GAGNON STREET - AUGIER AVENUE TO OXBOW BEND ROAD
 CONCRETE PAVEMENT REHABILITATION
 AUGIER AVENUE TO STATION 0+170

CITY DRAWING NUMBER
 SHEET 01 OF 18

CONSULTANT DRAWING NO.
 CT-01