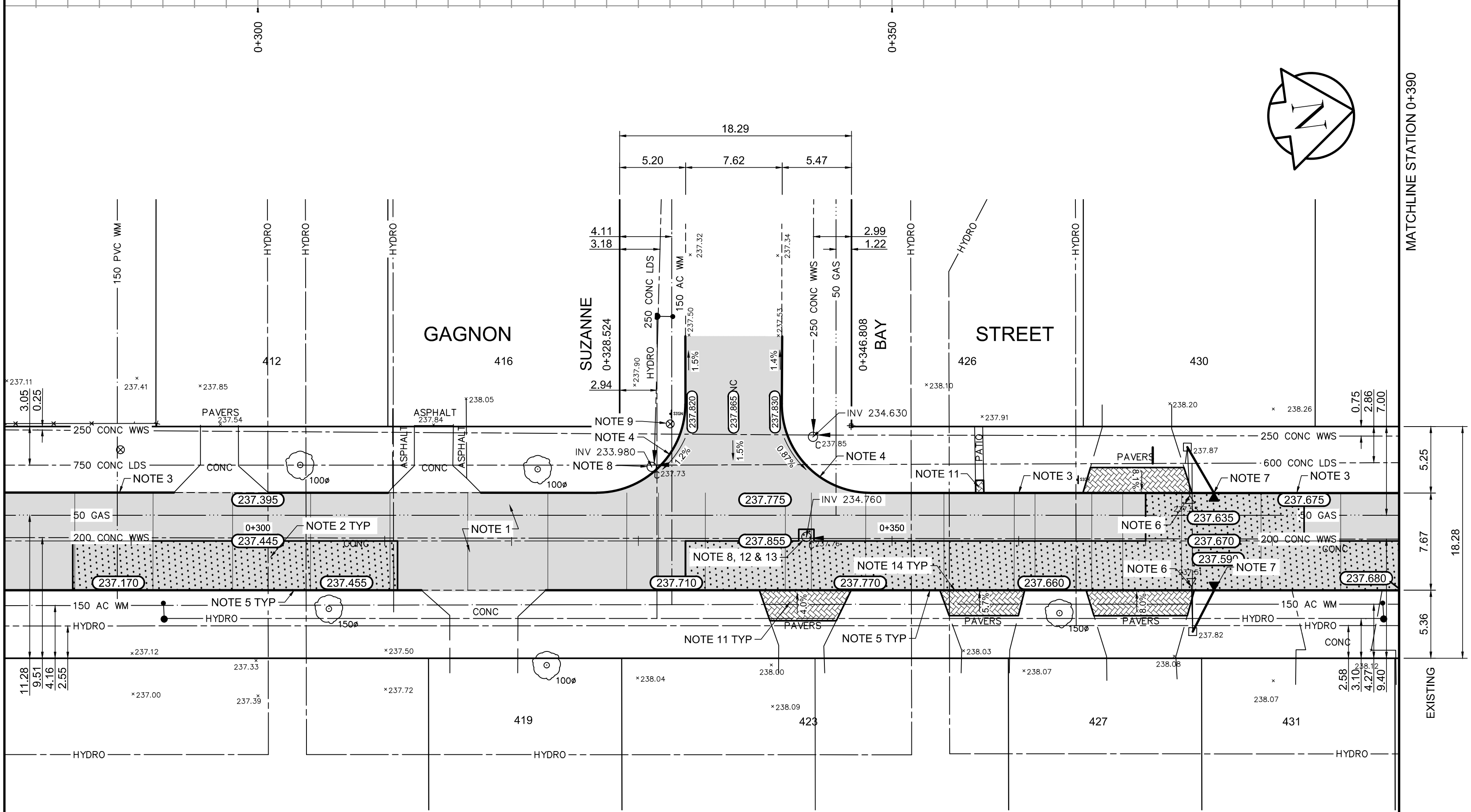
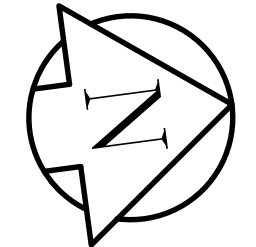


MATCHLINE STATION 0+280

MATCHLINE STATION 0+390



REFERENCE NOTES

- A. PAVEMENT DIMENSIONS ARE TO BACK OF CURB
- B. BASELINE IS CENTRE LINE RIGHT-OF-WAY
- C. PROPERTY LINES OBTAINED FROM CITY OF WINNIPEG L.B.I.S., AND NO SCALE FACTOR WAS APPLIED
- D. REFER TO AECOM FIELD BOOK NO. 4999

CONSTRUCTION NOTES

1. CONSTRUCT NEW ASPHALTIC PAVEMENT OVERLAY TYPE 1A (85mm AVG.)
2. REMOVE EXISTING CONCRETE PAVEMENT AND CONSTRUCT NEW 150mm REINFORCED CONCRETE PAVEMENT c/w 85mm ASPHALTIC OVERLAY
3. PLANE EXISTING MOUNTABLE CURB AND CONSTRUCT NEW BARRIER CURB (100mm REVEAL HT, DOWELLED)
4. REMOVE EXISTING MOUNTABLE CURB AND CONSTRUCT NEW MODIFIED BARRIER CURB (150mm HT, DOWELLED)
5. CONSTRUCT NEW BARRIER CURB (100mm REVEAL HT, SEPARATE)
6. REMOVE EXISTING CATCHPIT
7. INSTALL NEW CATCHPIT (SD-023) c/w CURB AND GUTTER INLET FRAME, BOX AND GRATED COVER (AP-011 & AP-012) AND CONNECT TO EXISTING CATCHBASIN
8. ADJUST EXISTING MANHOLE / CATCHBASIN TO GRADE
9. ADJUST EXISTING WATER VALVE TO GRADE
10. REGRADE EXISTING PATIO BLOCKS
11. REGRADE EXISTING PAVING STONES
12. REMOVE EXISTING FRAME AND COVER AND PLACE NEW FRAME AND SOLID COVER (AP-006/AP-007)
13. INSTALL NEW CAST IRON RING
14. CONSTRUCT NEW CONCRETE LIP CURB (40mm HT, INTEGRAL)

**AECOM**  
 Certificate of Authorization  
 AECOM Canada Ltd.  
 No. 4671 Date: \_\_\_\_\_

**METRIC**  
 WHOLE NUMBERS INDICATE MILLIMETRES  
 DECIMALIZED NUMBERS INDICATE METRES

150 mm W.M.	WATERMAIN	150 mm W.M.	HYDRO	— x —	PROFILE
Hydrant	HYDRANT	Hydrant	M.T.S.	— □ —	WEST GUTTER
Valve	VALVE	Valve	CONCRETE	— ○ —	EAST GUTTER
300mm L.D.S.	LAND DRAINAGE SEWER	300mm L.D.S.	ASPHALT	— ◇ —	N/W PROPERTY LINE
250mm W.W.S.	WASTEWATER SEWER	250mm W.W.S.	PROPERTY LINE	— ○ —	S/E PROPERTY LINE
Manhole	MANHOLE	Manhole	SURVEY BAR		
Catch Basin	CATCH BASIN	Catch Basin	ELEVATION (235.750)		
Catch Pit	CATCH PIT	Catch Pit	TREE		
Junctions	JUNCTIONS	Junctions	SIDEWALK RAMP		
Culvert	CULVERT	Culvert	CONCRETE SIDEWALK		
Gas	GAS	Gas	FENCE		
EXISTING	LEGEND - PLAN	PROPOSED	EXISTING	LEGEND - PROFILE	PROPOSED

**LOCATION APPROVED UNDERGROUND STRUCTURES**

SUPV. U/G STRUCTURES COMMITTEE DATE \_\_\_\_\_

NOTE:  
 LOCATION OF UNDERGROUND STRUCTURES AS SHOWN ARE BASED ON THE BEST INFORMATION AVAILABLE. BUT NO GUARANTEE IS GIVEN THAT ALL EXISTING UTILITIES ARE SHOWN OR THAT THE GIVEN LOCATIONS ARE EXACT. CONFIRMATION OF EXISTENCE AND EXACT LOCATION OF ALL SERVICES MUST BE OBTAINED FROM THE INDIVIDUAL UTILITIES BEFORE PROCEEDING WITH CONSTRUCTION.

B.M. 41-005  
 ELEV. 238.147

0 ISSUED FOR TENDER 04/12/2018 BC  
 A ISSUED FOR REVIEW 04/04/2018 BC

NO. REVISIONS DATE BY

**AECOM**

DESIGNED BY SF CHECKED BY BC/KWR  
 DRAWN BY JC APPROVED BY  
 HOR. SCALE: 1:250  
 VERTICAL: 1:10  
 RELEASED FOR CONSTRUCTION BY:  
 DATE

ENGINEER'S SEAL  
 PROVINCE OF MANITOBA  
**K.W. RAE**  
 REGISTERED PROFESSIONAL ENGINEER

**THE CITY OF WINNIPEG**  
 PUBLIC WORKS DEPARTMENT  
 ENGINEERING DIVISION

2018 RESIDENTIAL STREET RENEWAL PROGRAM

GAGNON STREET - AUGIER AVENUE TO OXBOW BEND ROAD  
 CONCRETE PAVEMENT REHABILITATION  
 STATION 0+280 TO STATION 0+390

CITY DRAWING NUMBER  
 SHEET 03 OF 18

CONSULTANT DRAWING NO. CT-03