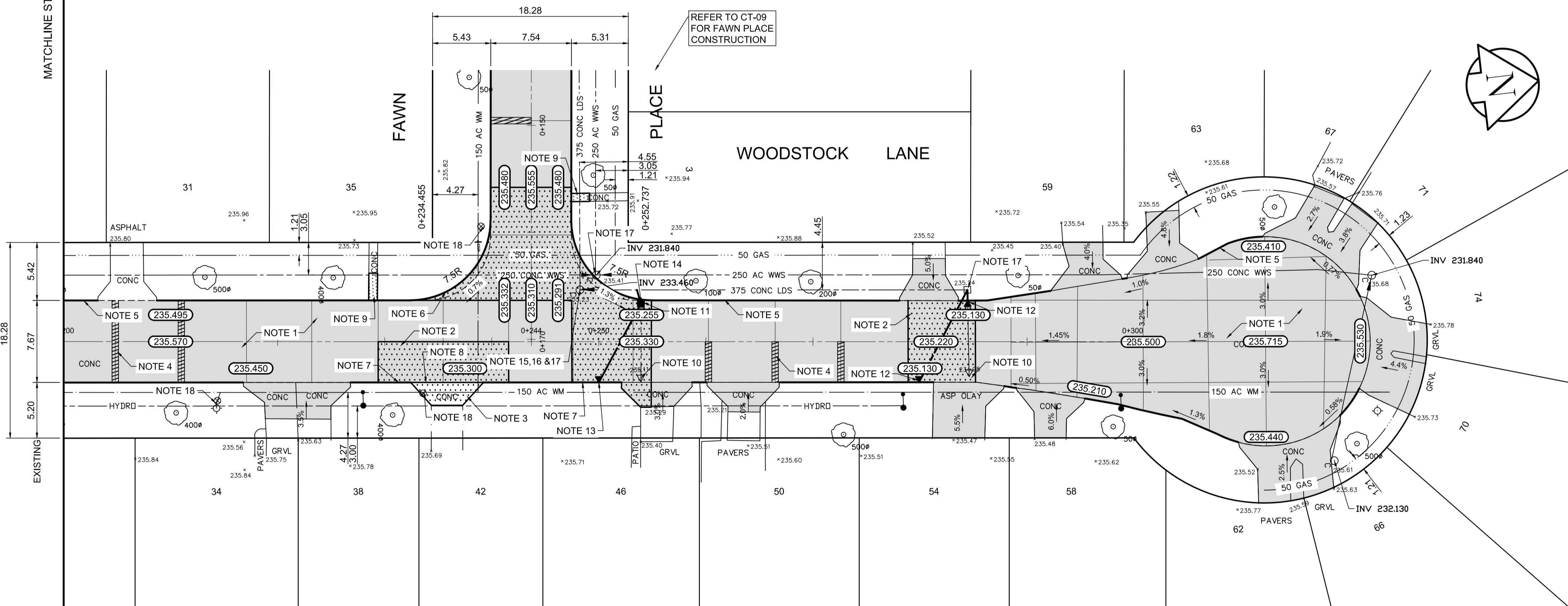


MATCHLINE STATION 0+200



- REFERENCE NOTES**
- A. PAVEMENT DIMENSIONS ARE TO BACK OF CURB
 - B. BASELINE IS CENTRE LINE RIGHT-OF-WAY
 - C. PROPERTY LINES OBTAINED FROM CITY OF WINNIPEG L.B.I.S., AND NO SCALE FACTOR WAS APPLIED
 - D. REFER TO AECOM FIELD BOOK NO. 4999

- CONSTRUCTION NOTES**
1. CONSTRUCT NEW ASPHALTIC PAVEMENT OVERLAY TYPE 1A (85mm AVG.)
 2. REMOVE EXISTING CONCRETE PAVEMENT AND CONSTRUCT NEW 150mm REINFORCED CONCRETE PAVEMENT c/w 85mm ASPHALTIC OVERLAY
 3. REMOVE EXISTING CONCRETE PAVEMENT AND CONSTRUCT NEW 150mm REINFORCED CONCRETE PAVEMENT
 4. MILL EXISTING CONCRETE JOINTS AND PARTIAL DEPTH PATCH WITH TYPE 1A ASPHALT
 5. PLANE EXISTING MOUNTABLE CURB AND CONSTRUCT NEW BARRIER CURB (100mm REVEAL HT, DOWELLED)
 6. CONSTRUCT NEW MODIFIED BARRIER CURB (150mm HT, SEPERATE)
 7. CONSTRUCT NEW BARRIER CURB (100mm REVEAL HT, SEPERATE)
 8. CONSTRUCT NEW LIP CURB (40mm REVEAL HT, INTEGRAL)
 9. RENEW EXISTING 100mm CONCRETE SIDEWALK
 10. REMOVE EXISTING CATCHPIT AND PLUG EXISTING LEAD
 11. REMOVE EXISTING CATCHBASIN AND PLUG EXISTING LEAD
 12. INSTALL CATCHPIT (SD-023) c/w CURB AND GUTTER INLET FRAME AND COVER AND CONNECT TO EXISTING CATCHBASIN
 13. INSTALL CATCHPIT (SD-023) c/w CURB AND GUTTER INLET FRAME AND COVER AND CONNECT TO NEW CATCHBASIN
 14. INSTALL CATCHBASIN (SD-024) c/w CURB AND GUTTER INLET FRAME AND COVER AND CONNECT TO EXISTING LEAD
 15. REMOVE EXISTING FRAME AND COVER AND INSTALL NEW FRAME AND SOLID COVER (AP006/AP007)
 16. INSTALL NEW CAST IRON RISER RING
 17. ADJUST EXISTING MANHOLE / CATCHBASIN TO GRADE
 18. ADJUST EXISTING WATER VALVE TO GRADE

AECOM
 Certificate of Authorization
 AECOM Canada Ltd.
 No. 4671 Date: _____

METRIC
 WHOLE NUMBERS INDICATE MILLIMETRES
 DECIMALIZED NUMBERS INDICATE METRES

150 mm W.M.	WATERMAIN	150 mm W.M.	HYDRO	— x —	PROFILE
Hydrant	HYDRANT	Manhole	M.T.S.	— □ —	WEST GUTTER
Valve	VALVE	Catch Basin	CONCRETE	— ○ —	EAST GUTTER
300mm L.D.S.	LAND DRAINAGE SEWER	Catch Pit	ASPHALT	— ◇ —	N/W PROPERTY LINE
250mm W.W.S.	WASTEWATER SEWER	Junctions	PROPERTY LINE	— ○ —	S/E PROPERTY LINE
Manhole	MANHOLE	Culvert	SURVEY BAR		
Catch Basin	CATCH BASIN	Gas	ELEVATION (235.750)		
Catch Pit	CATCH PIT		TREE		
Junctions	JUNCTIONS		SIDEWALK RAMP		
Culvert	CULVERT		CONCRETE SIDEWALK		
Gas	GAS		FENCE		
EXISTING	LEGEND - PLAN	PROPOSED	EXISTING	LEGEND - PLAN	PROPOSED
			EXISTING	LEGEND - PROFILE	PROPOSED

LOCATION APPROVED UNDERGROUND STRUCTURES

SUPV. U/G STRUCTURES COMMITTEE DATE _____

NOTE:
 LOCATION OF UNDERGROUND STRUCTURES AS SHOWN ARE BASED ON THE BEST INFORMATION AVAILABLE. BUT NO GUARANTEE IS GIVEN THAT ALL EXISTING UTILITIES ARE SHOWN OR THAT THE GIVEN LOCATIONS ARE EXACT. CONFIRMATION OF EXISTENCE AND EXACT LOCATION OF ALL SERVICES MUST BE OBTAINED FROM THE INDIVIDUAL UTILITIES BEFORE PROCEEDING WITH CONSTRUCTION.

B.M. 49-020 W. side Elmhurst Rd., S. of Eldridge Ave., Tpk. in W. Conc. foundation of No. 694 Elmhurst Rd., 0.5 ELEV. 236.082 m W. of N.E. Cor. of house & 0.4 m below siding.

NO.	REVISIONS	DATE	BY
0	ISSUED FOR TENDER	04/12/2018	BC
A	ISSUED FOR REVIEW	04/04/2018	BC

AECOM

DESIGNED BY	JC	CHECKED BY	BC/KWR
DRAWN BY	JC	APPROVED BY	
HOR. SCALE:	1:250	RELEASED FOR CONSTRUCTION BY:	
VERTICAL:	1:10	DATE	

ENGINEER'S SEAL

PROVINCE OF MANITOBA

K.W. RAE

REGISTERED PROFESSIONAL ENGINEER

CONSULTANT DRAWING NO. CT-08

THE CITY OF WINNIPEG
 PUBLIC WORKS DEPARTMENT
 ENGINEERING DIVISION

2018 RESIDENTIAL STREET RENEWAL PROGRAM

WOODSTOCK LANE - ELDRIDGE AVENUE TO STATION 0+300
 CONCRETE PAVEMENT REHABILITATION
 STATION 0+200 TO STATION 0+300

CITY DRAWING NUMBER SHEET 08 OF 18