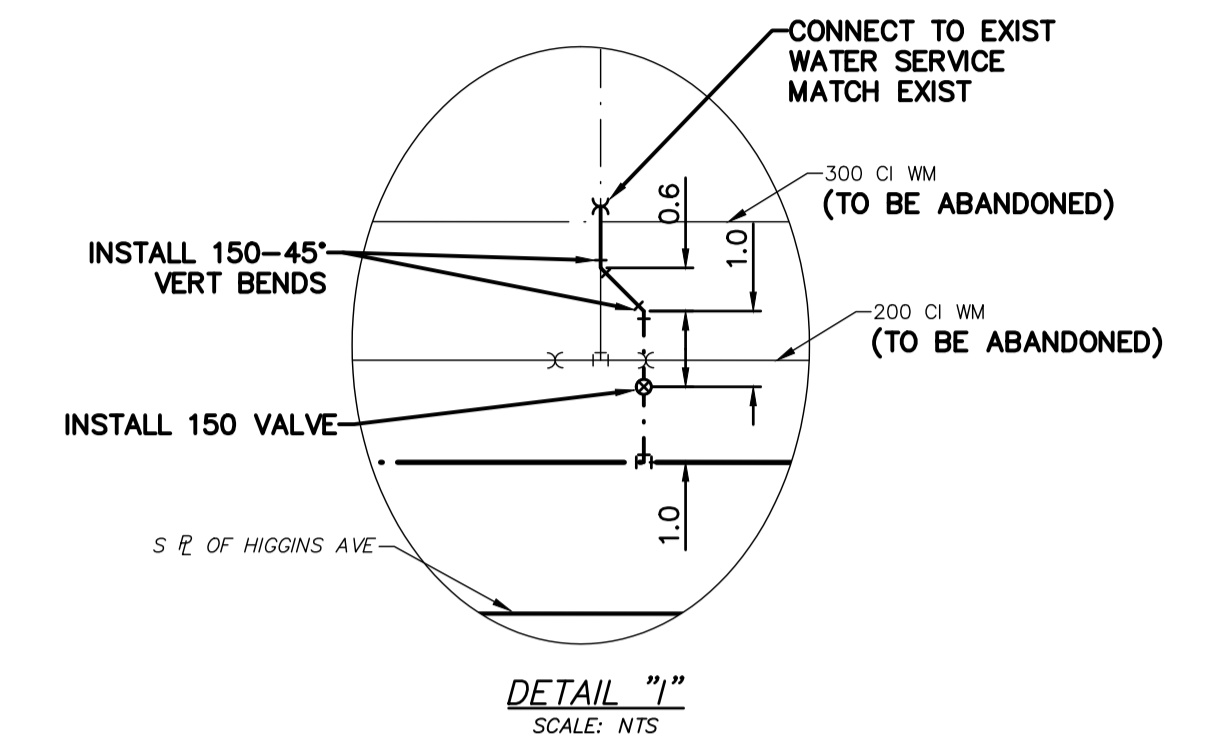
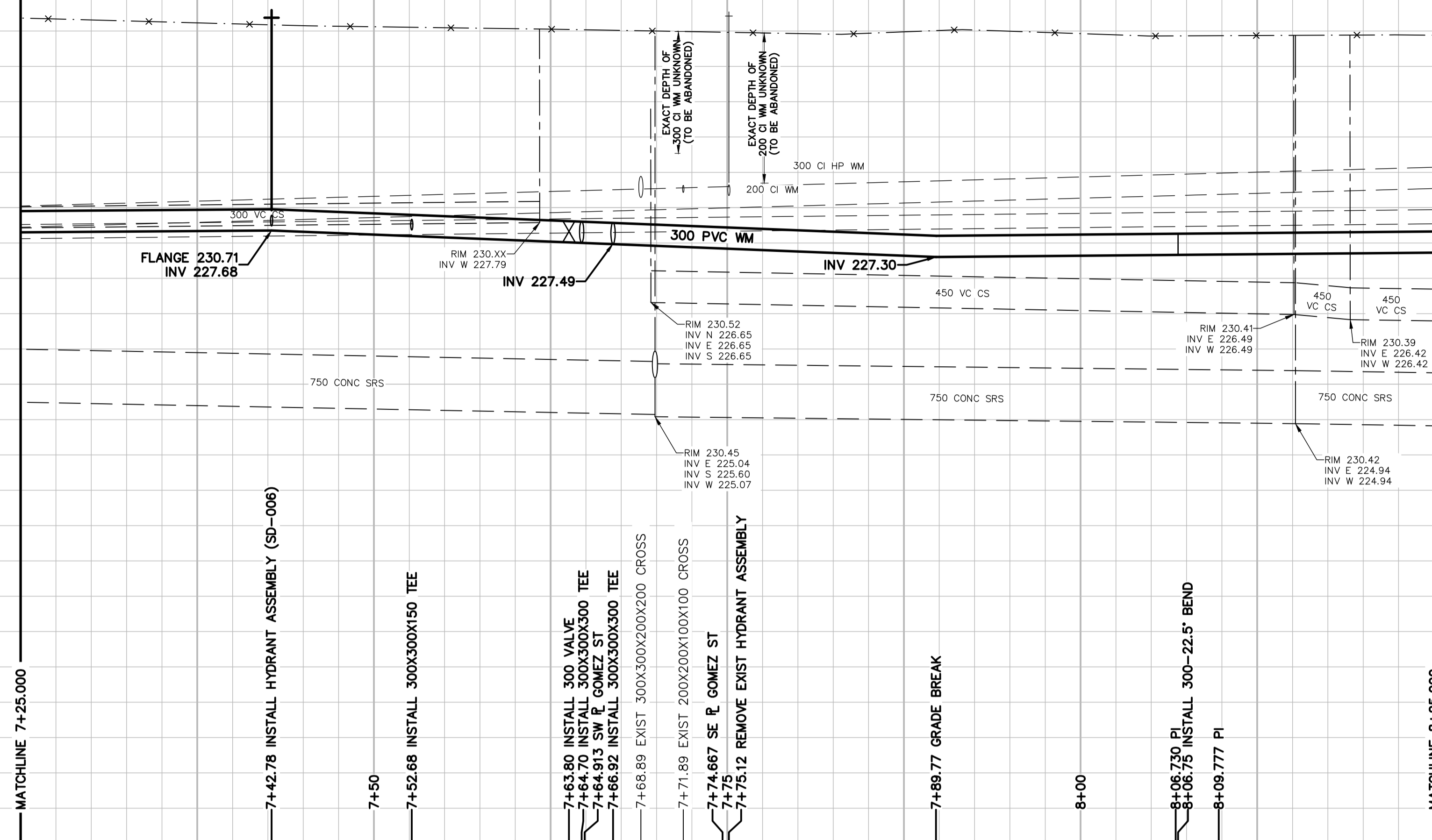
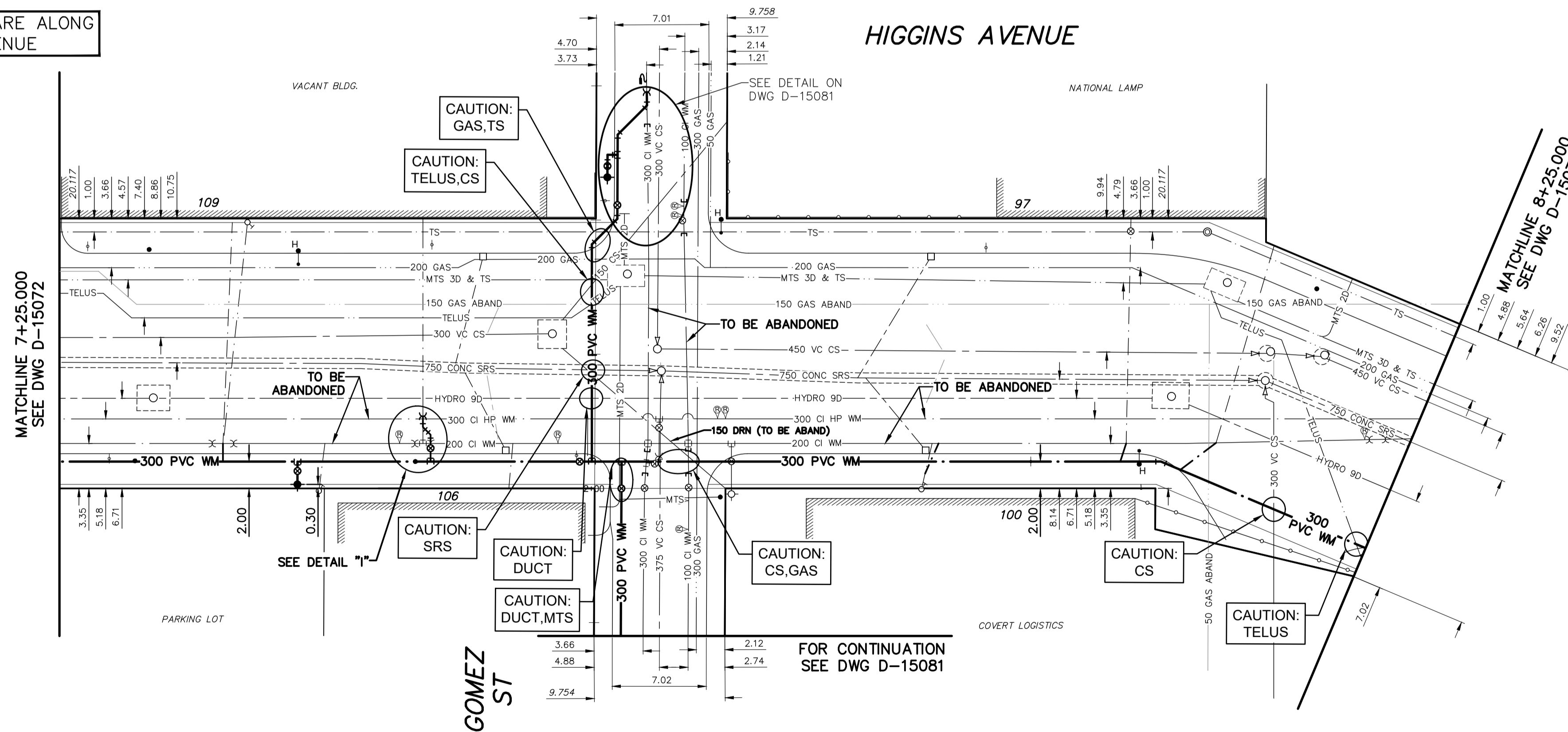


232.0
231.0
230.0
229.0
228.0
227.0
226.0
225.0
224.0

232.0
231.0
230.0
229.0
228.0
227.0
226.0
225.0
224.0



NOTE: CHAINAGES SHOWN ARE ALONG S R OF HIGGINS AVENUE



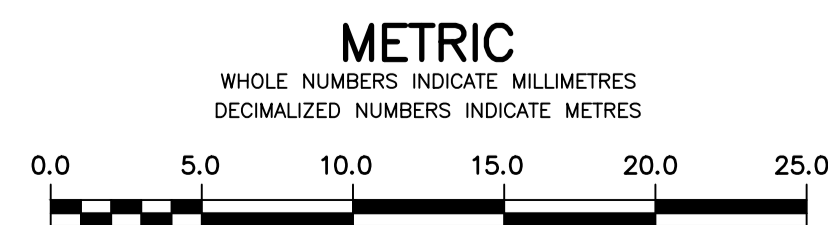
WATER SERVICE INFORMATION

| ADDRESS | SIZE (mm) MATERIAL (STREET) | SIZE (mm) MATERIAL (PROP.) | SHORT & LONG MEASUREMENT | CORP. LOCATION | REMARKS |
|----------------|-----------------------------|----------------------------|--------------------------|----------------|-------------------|
| 109 HIGGINS AV | 25 | 50 | - | - | RECONNECT SERVICE |
| COMMERCIAL | CU | - | - | - | DOMESTIC SERVICE |
| 109 HIGGINS AV | - | - | - | - | RECONNECT SERVICE |
| COMMERCIAL | - | - | - | - | FIRE SERVICE |
| 106 HIGGINS AV | 25 | 25 | 1.21 WEL BLDG | 0.31 E.S.C. | RECONNECT SERVICE |
| COMMERCIAL | CU | CU | 6.4 WML GOMEZ CURB | - | - |
| 100 HIGGINS AV | 50 | 50 | 8.69 EWL BLDG | 0.15 E.S.C. | RECONNECT SERVICE |
| COMMERCIAL | CU | CU | 14.48 EEL GOMEZ ST | - | - |
| 97 HIGGINS AV | 25 | 25 | 10.67 EWL BLDG | 0.61 W.S.C. | RECONNECT SERVICE |
| COMMERCIAL | CU | LEAD | 30.48 EEL GOMEZ ST | - | - |

* SERVICES TO BE RENEWED TO R. ALL OTHERS TO BE RECONNECTED

FOR INDEX SEE D-15066

NOTE: ALL VALVES TO BE INSTALLED COUNTERCLOCKWISE TO CLOSE



WARNING
IF POWER EQUIPMENT OR EXPLOSIVES ARE TO BE USED FOR EXCAVATION ON THIS PROJECT THE CONTRACTOR MUST:
1) NOTIFY THE GAS COMPANY OF THE PROPOSED LOCATION OF EXCAVATION.
2) TAKE PRECAUTION TO AVOID DAMAGE TO GAS COMPANY INSTALLATIONS.
SEE PROVINCIAL REGULATION 210/72 FOR DETAILS

LOCATION APPROVED UNDERGROUND STRUCTURES
SUPV. U/G STRUCTURES COMMITTEE DATE
NOTE:
LOCATION OF UNDERGROUND STRUCTURES AS SHOWN ARE BASED ON THE BEST INFORMATION AVAILABLE BUT NO GUARANTEE IS GIVEN THAT ALL EXISTING UTILITIES ARE SHOWN OR THAT THE GIVEN LOCATIONS ARE EXACT. CONFIRMATION OF EXISTENCE AND EXACT LOCATION OF ALL SERVICES MUST BE OBTAINED FROM THE INDIVIDUAL UTILITIES BEFORE PROCEEDING WITH CONSTRUCTION.

| | | |
|------------|-------------------|---|
| B.M. ELEV. | 35-001 233.054 | 3-F - Bolt in W. wall of Concourse, C.P.R. Station, Higgins Ave., 15.5 m N. S.W. Cor. of Concourse. |
| NO. | REVISIONS | DATE BY |

| | |
|----------------------------|------------|
| MORRISON HERSHFIELD | |
| DESIGNED BY | JKH |
| CHECKED BY | HAK |
| DRAWN BY | DML |
| APPROVED BY | BWB |
| SCALE: | |
| HORIZONTAL | 1:250 |
| VERTICAL | 1:50 |
| RELEASED FOR CONSTRUCTION | |
| DATE | 2018 04 12 |

ENGINEER'S SEAL
ORIGINAL SIGNED BY H.A. KATZ
2018 04 16

THE CITY OF WINNIPEG
WATER AND WASTE DEPARTMENT
ENGINEERING DIVISION

2018 WATER MAIN RENEWALS
CONTRACT 1
HIGGINS AVENUE
40 m W OF GOMEZ STREET TO
48 m E OF GOMEZ STREET

SHEET 9 OF 20
CITY DRAWING NUMBER
D-15073