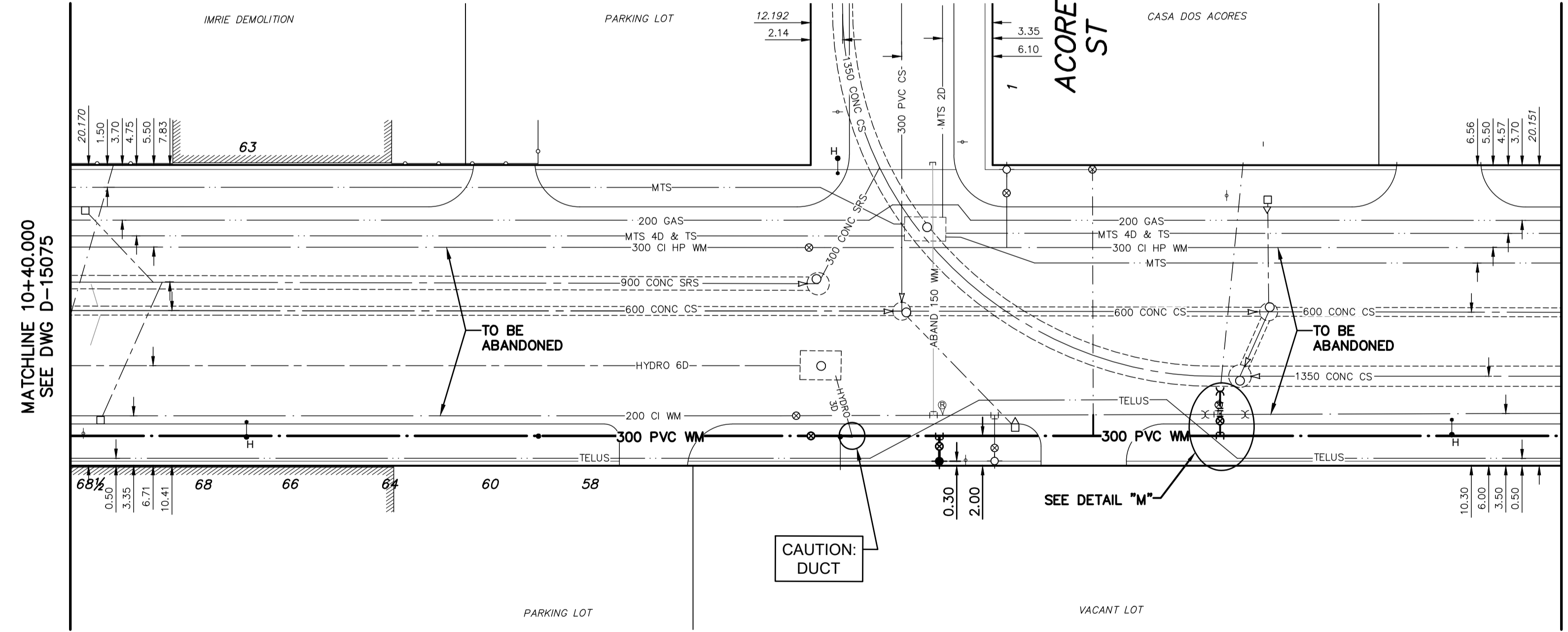


NOTE: CHAINAGES SHOWN ARE ALONG S R OF HIGGINS AVENUE

HIGGINS AVENUE



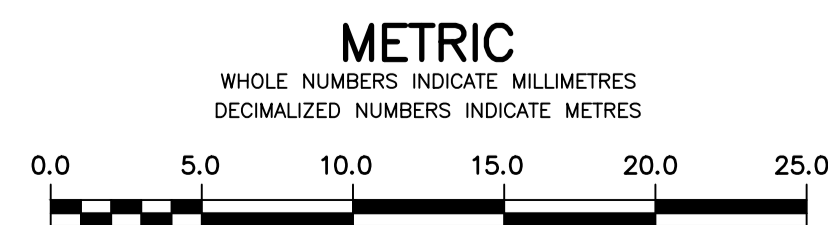
WATER SERVICE INFORMATION

ADDRESS	SIZE (mm) MATERIAL (STREET)	SIZE (mm) MATERIAL (PROP.)	SHORT & LONG MEASUREMENT	CORP. LOCATION	REMARKS
63 HIGGINS AV	25 CU	25 CU	3.30 WWL BLDG	44.3 E VALVE	RECONNECT SERVICE
64 HIGGINS AV	-	-	-	-	SERVICED FROM 68 HIGGINS
65 HIGGINS AV	-	-	-	-	SERVICED FROM 68 HIGGINS
66 HIGGINS AV	-	-	-	-	SERVICED FROM 68 HIGGINS
67 HIGGINS AV	-	-	-	-	SERVICED FROM 68 HIGGINS
68 HIGGINS AV	-	-	-	-	SERVICED FROM 68 HIGGINS
69 HIGGINS AV	-	-	-	-	SERVICED FROM 68 HIGGINS
70 HIGGINS AV	-	-	-	-	SERVICED FROM 68 HIGGINS
71 HIGGINS AV	-	-	-	-	SERVICED FROM 68 HIGGINS
72 HIGGINS AV	-	-	-	-	SERVICED FROM 68 HIGGINS
73 HIGGINS AV	-	-	-	-	SERVICED FROM 68 HIGGINS
74 HIGGINS AV	-	-	-	-	SERVICED FROM 68 HIGGINS
75 HIGGINS AV	-	-	-	-	SERVICED FROM 68 HIGGINS
76 HIGGINS AV	-	-	-	-	SERVICED FROM 68 HIGGINS
77 HIGGINS AV	-	-	-	-	SERVICED FROM 68 HIGGINS
78 HIGGINS AV	-	-	-	-	SERVICED FROM 68 HIGGINS
1 ACORES ST	-	-	-	-	RECONNECT SERVICE
1 ACORES ST	-	-	-	-	DOMESTIC SERVICE
1 ACORES ST	-	-	-	-	RECONNECT SERVICE
1 ACORES ST	-	-	-	-	FIRE SERVICE

\* SERVICES TO BE RENEWED TO R, ALL OTHERS TO BE RECONNECTED

FOR INDEX SEE D-15066

NOTE: ALL VALVES TO BE INSTALLED COUNTERCLOCKWISE TO CLOSE



**WARNING**  
IF POWER EQUIPMENT OR EXPLOSIVES ARE TO BE USED FOR EXCAVATION ON THIS PROJECT THE CONTRACTOR MUST:  
1) NOTIFY THE GAS COMPANY OF THE PROPOSED LOCATION OF EXCAVATION.  
2) TAKE PRECAUTION TO AVOID DAMAGE TO GAS COMPANY INSTALLATIONS.  
SEE PROVINCIAL REGULATION 210/72 FOR DETAILS

**LOCATION APPROVED UNDERGROUND STRUCTURES**  
SUPV. U/G STRUCTURES COMMITTEE DATE  
NOTE: LOCATION OF UNDERGROUND STRUCTURES AS SHOWN ARE BASED ON THE BEST INFORMATION AVAILABLE BUT NO GUARANTEE IS GIVEN THAT ALL EXISTING UTILITIES ARE SHOWN OR THAT THE GIVEN LOCATIONS ARE EXACT. CONFIRMATION OF EXISTENCE AND EXACT LOCATION OF ALL SERVICES MUST BE OBTAINED FROM THE INDIVIDUAL UTILITIES BEFORE PROCEEDING WITH CONSTRUCTION.

B.M. 35-001 ELEV. 233.054	3-F - Bolt in W. wall of Concourse, C.P.R. Station, Higgins Ave., 15.5 m N. S.W. Cor. of Concourse.		
NO.	REVISIONS	DATE	BY

<b>MORRISON HERSHFIELD</b>	
DESIGNED BY: JKH	CHECKED BY: HAK
DRAWN BY: DML	APPROVED BY: BWB
SCALE: HORIZONTAL 1:250 VERTICAL 1:50	RELEASED FOR CONSTRUCTION
DATE: 2018 04 12	DATE:

ENGINEER'S SEAL  
ORIGINAL SIGNED BY H.A. KATZ  
2018 04 16

**THE CITY OF WINNIPEG**  
WATER AND WASTE DEPARTMENT  
ENGINEERING DIVISION

2018 WATER MAIN RENEWALS  
CONTRACT 1  
**HIGGINS AVENUE**  
47 m E OF ANNABELLA STREET TO  
38 m E OF ACORES STREET

SHEET 12 OF 20  
CITY DRAWING NUMBER  
**D-15076**