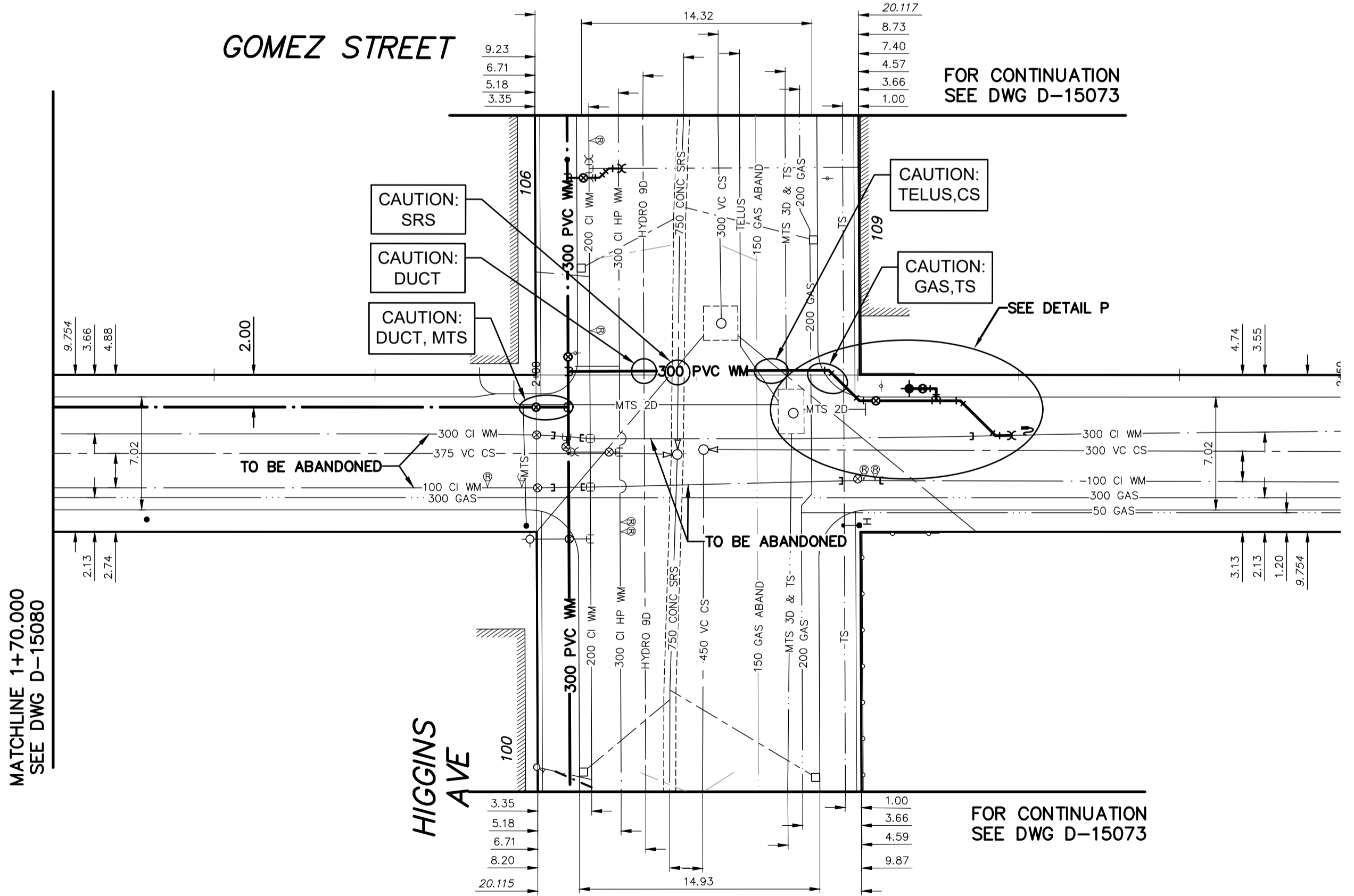


NOTE:  
150 SERVICE FOR #92 GOMEZ STREET TO BE RECONNECTED TO EXIST 300 CI WM AND EXIST 100 CI WM TO BE ABANDONED AS SHOWN - SERVICE FOR #92 GOMEZ ST IS LOCATED APPROX. 52.5m NNL HIGGINS AVE.

NOTE: CHAINAGES SHOWN ARE ALONG W<sub>R</sub> OF GOMEZ STREET



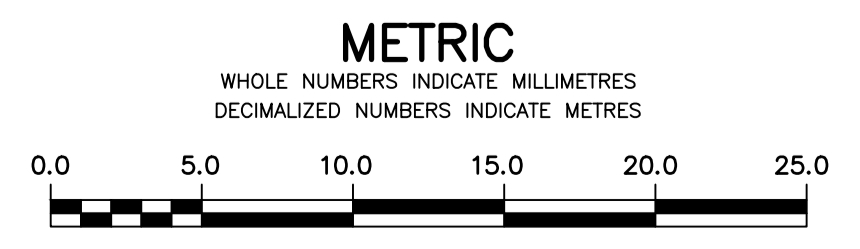
**WATER SERVICE INFORMATION**

ADDRESS	SIZE (mm) MATERIAL (STREET)	SIZE (mm) MATERIAL (PROP.)	SHORT & LONG MEASUREMENT	CORP. LOCATION	REMARKS
100 HIGGINS AV	50	50	8.69 EWL BLDG	0.15 E.S.C.	RECONNECT SERVICE
COMMERCIAL	CU	CU	14.48 EEL GOMEZ ST	-	SERVICED OFF HIGGINS AVE
106 HIGGINS AV	25	25	1.21 WEL BLDG	0.31 E.S.C.	RECONNECT SERVICE
COMMERCIAL	CU	CU	8.4 WML COMEZ CURB	-	SERVICED OFF HIGGINS AVE
97 HIGGINS AV	25	25	10.67 EWL BLDG	0.81 W.S.C.	RECONNECT SERVICE
COMMERCIAL	CU	LEAD	30.48 EEL GOMEZ ST	-	SERVICED OFF HIGGINS AVE
102 HIGGINS AV	25	50	-	-	RECONNECT SERVICE
COMMERCIAL	CU	-	-	-	DOMESTIC SERVICE - SERVICED OFF HIGGINS AVE
109 HIGGINS AV	-	-	-	-	RECONNECT SERVICE
COMMERCIAL	-	-	-	-	FIRE SERVICE - SERVICED OFF HIGGINS AVE

\* SERVICES TO BE RENEWED TO R. ALL OTHERS TO BE RECONNECTED

FOR INDEX SEE D-15066

NOTE: ALL VALVES TO BE INSTALLED COUNTERCLOCKWISE TO CLOSE



**WARNING**  
IF POWER EQUIPMENT OR EXPLOSIVES ARE TO BE USED FOR EXCAVATION ON THIS PROJECT THE CONTRACTOR MUST:  
1) NOTIFY THE GAS COMPANY OF THE PROPOSED LOCATION OF EXCAVATION.  
2) TAKE PRECAUTION TO AVOID DAMAGE TO GAS COMPANY INSTALLATIONS.  
SEE PROVINCIAL REGULATION 210/72 FOR DETAILS

**LOCATION APPROVED**  
UNDERGROUND STRUCTURES  
SUPV. U/G STRUCTURES COMMITTEE DATE  
NOTE:  
LOCATION OF UNDERGROUND STRUCTURES AS SHOWN ARE BASED ON THE BEST INFORMATION AVAILABLE BUT NO GUARANTEE IS GIVEN THAT ALL EXISTING UTILITIES ARE SHOWN OR THAT THE GIVEN LOCATIONS ARE EXACT. CONFIRMATION OF EXISTENCE AND EXACT LOCATION OF ALL SERVICES MUST BE OBTAINED FROM THE INDIVIDUAL UTILITIES BEFORE PROCEEDING WITH CONSTRUCTION.

B.M. ELEV.	35-001 233.054	3-F - Bolt in W. wall of Concourse, C.P.R. Station, Higgins Ave., 15.5 m N. S.W. Cor. of Concourse.
NO.	REVISIONS	DATE BY

DESIGNED BY	JKH	CHECKED BY	HAK
DRAWN BY	DML	APPROVED BY	BWB
SCALE:	HORIZONTAL 1:250	VERTICAL 1:50	RELEASED FOR CONSTRUCTION
DATE	2018 04 12	DATE	

ENGINEER'S SEAL  
ORIGINAL SIGNED BY H.A. KATZ  
2018 04 16

**THE CITY OF WINNIPEG**  
WATER AND WASTE DEPARTMENT  
ENGINEERING DIVISION  
2018 WATER MAIN RENEWALS  
CONTRACT 1  
**GOMEZ STREET**  
30 m S OF HIGGINS AVENUE TO  
30 m N OF HIGGINS AVENUE  
SHEET 17 OF 20  
CITY DRAWING NUMBER  
**D-15081**