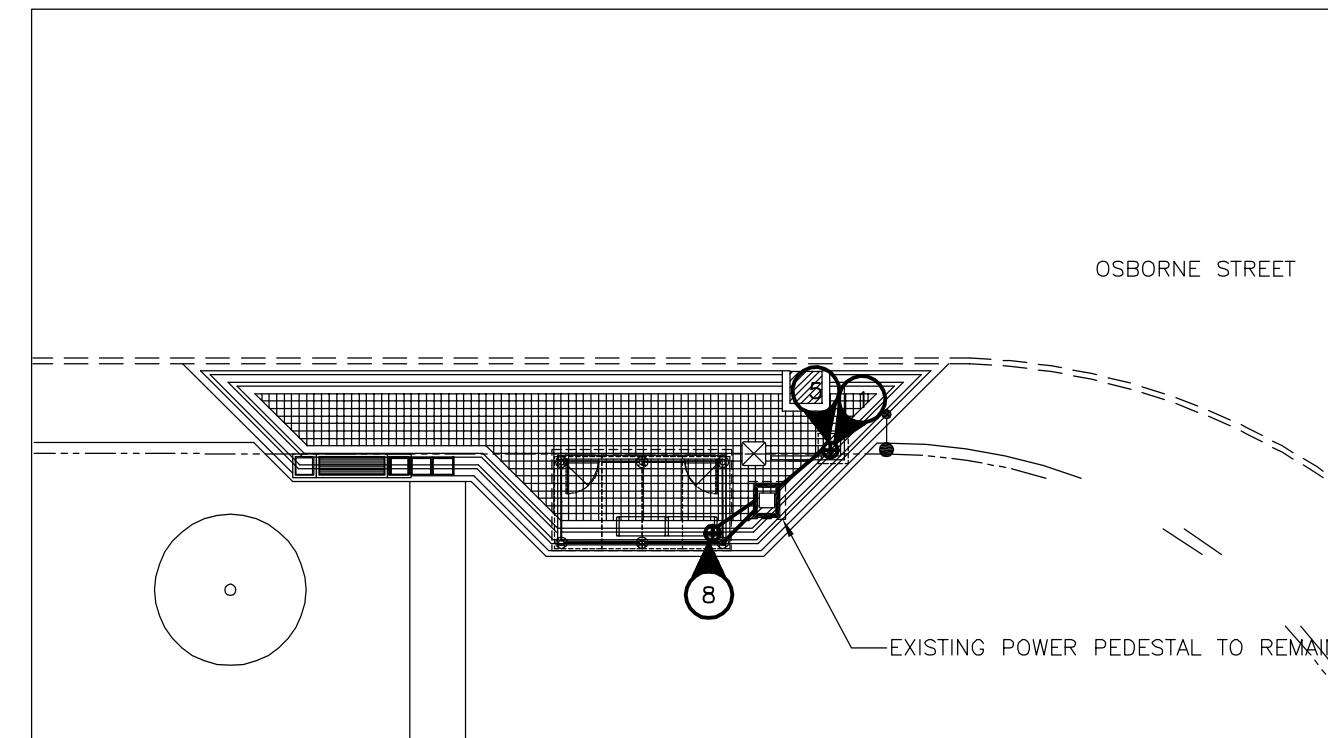
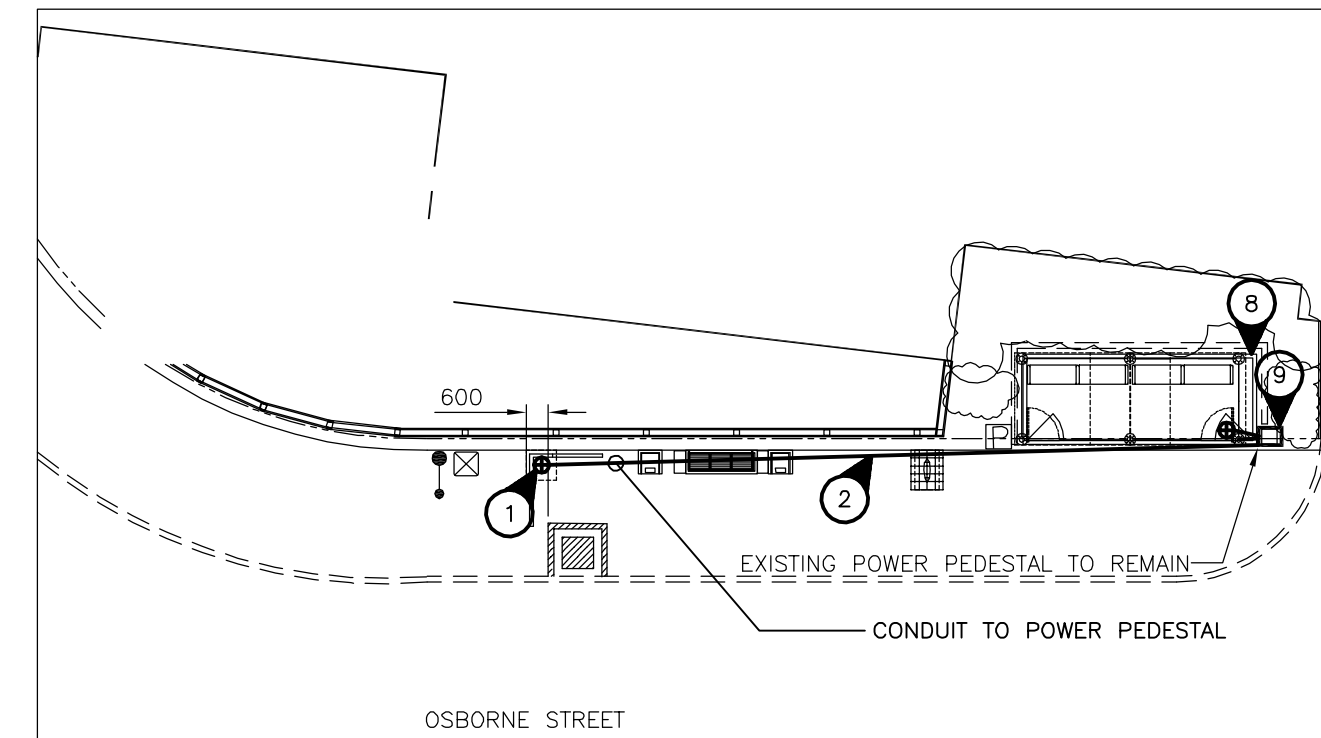


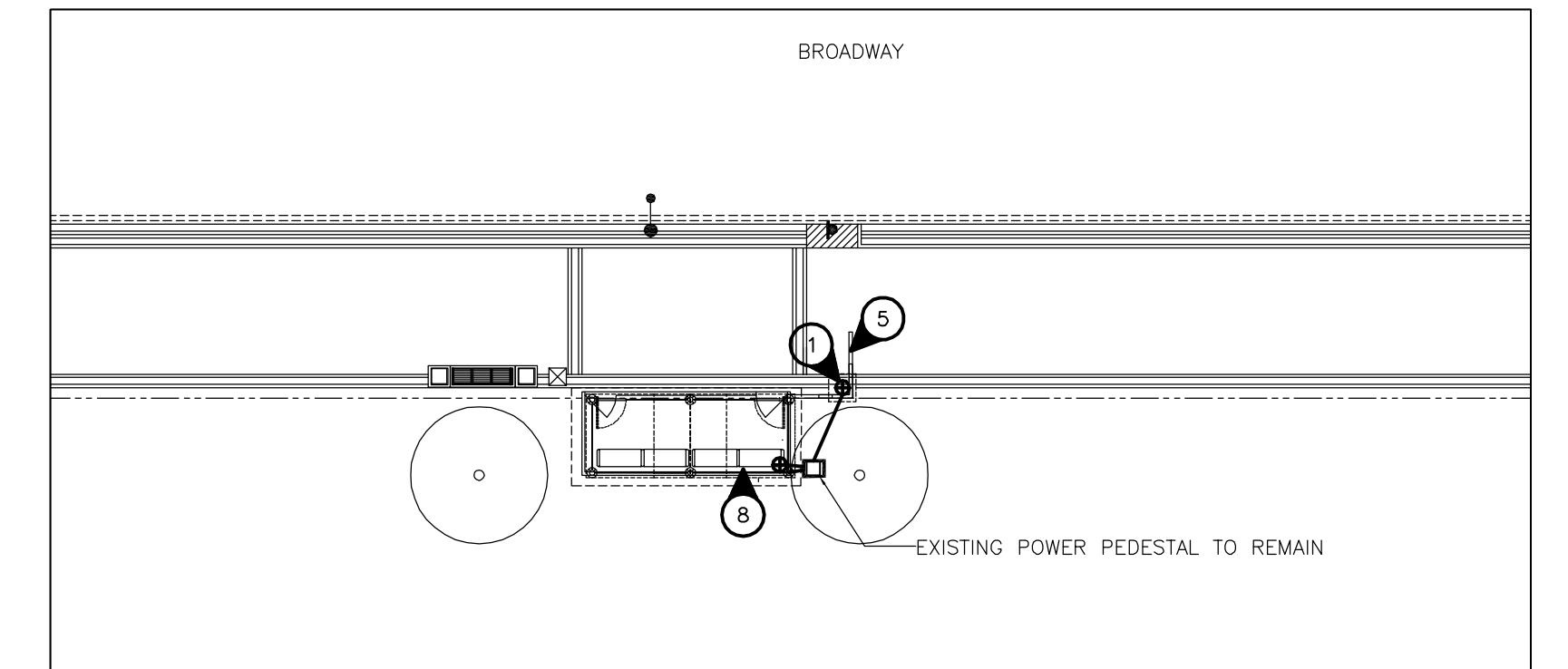
Northbound Osborne, F/S Brandon
Stop 10063 Brandon



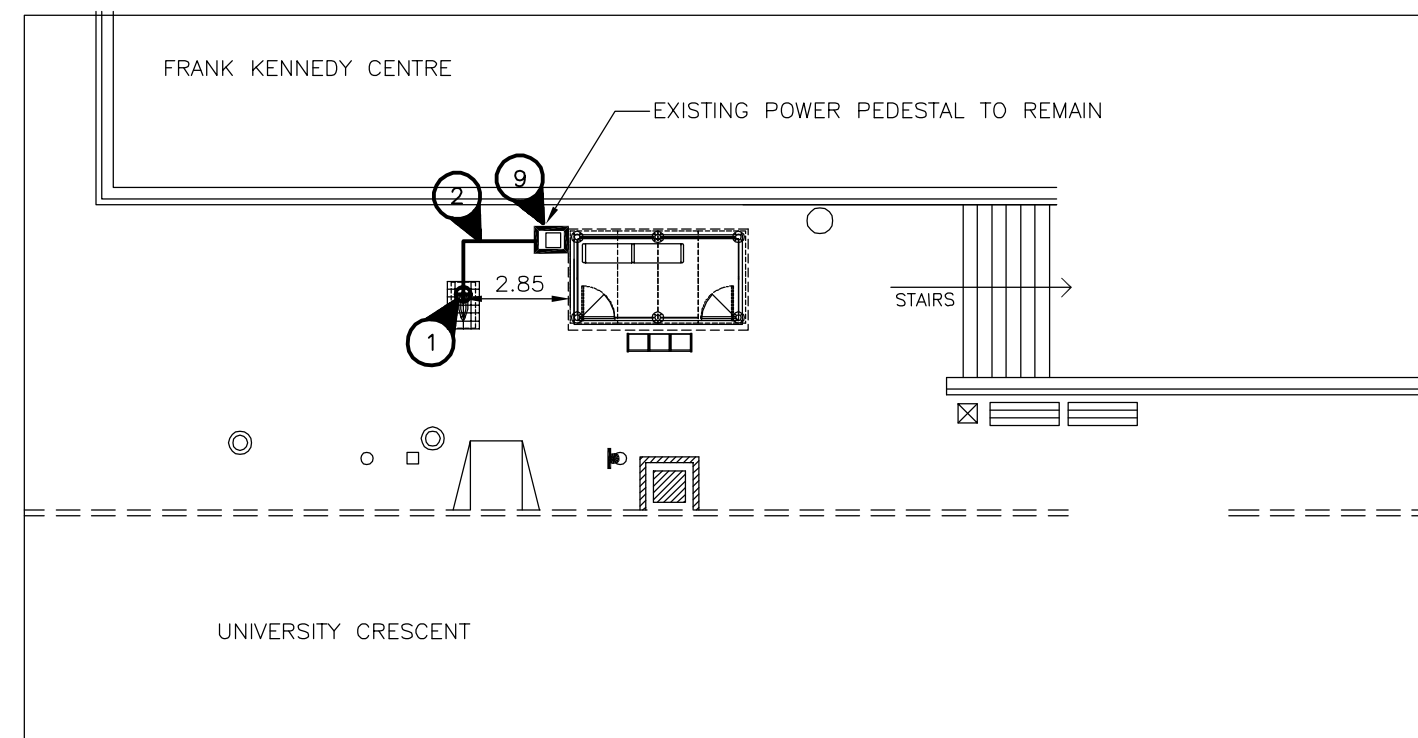
Northbound Osborne, N/S Broadway
Stop 10596 Broadway



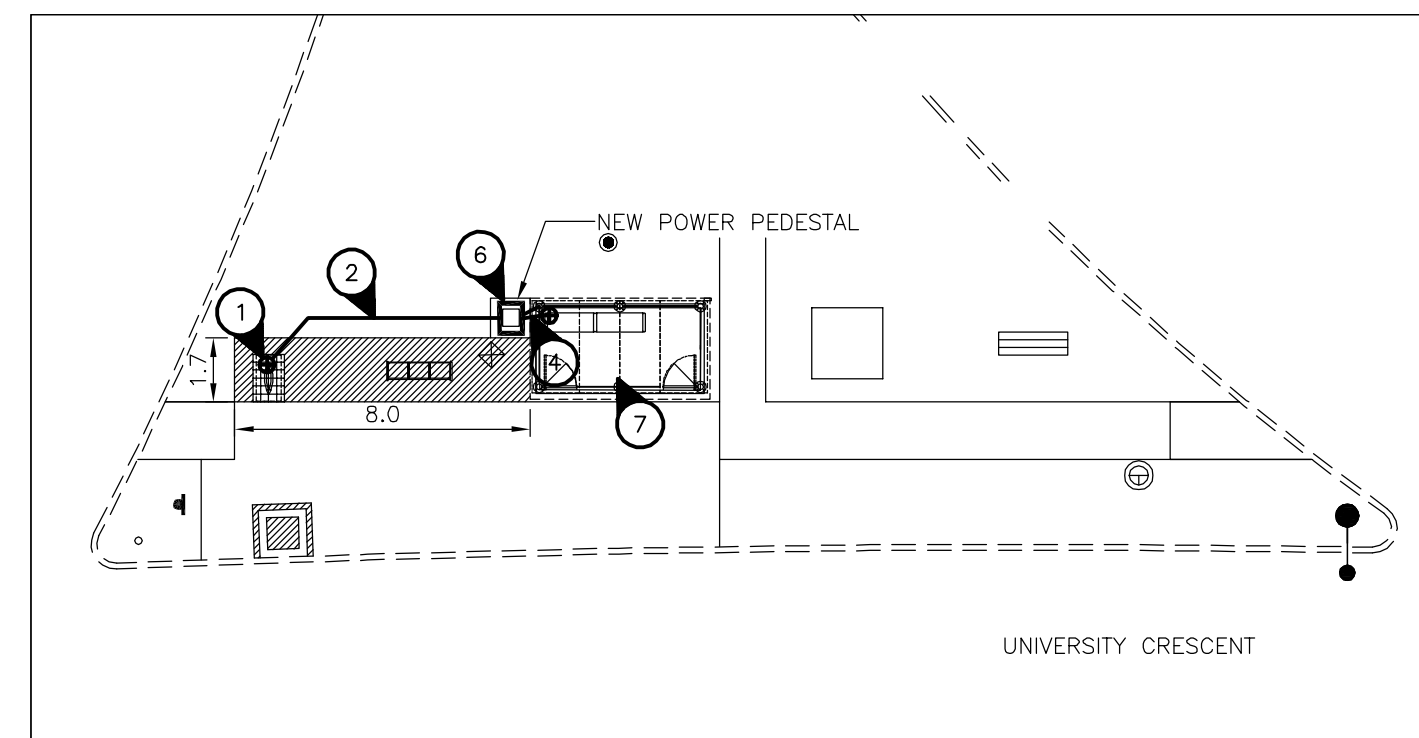
Southbound Osborne, N/S Broadway
Stop 10599 Broadway



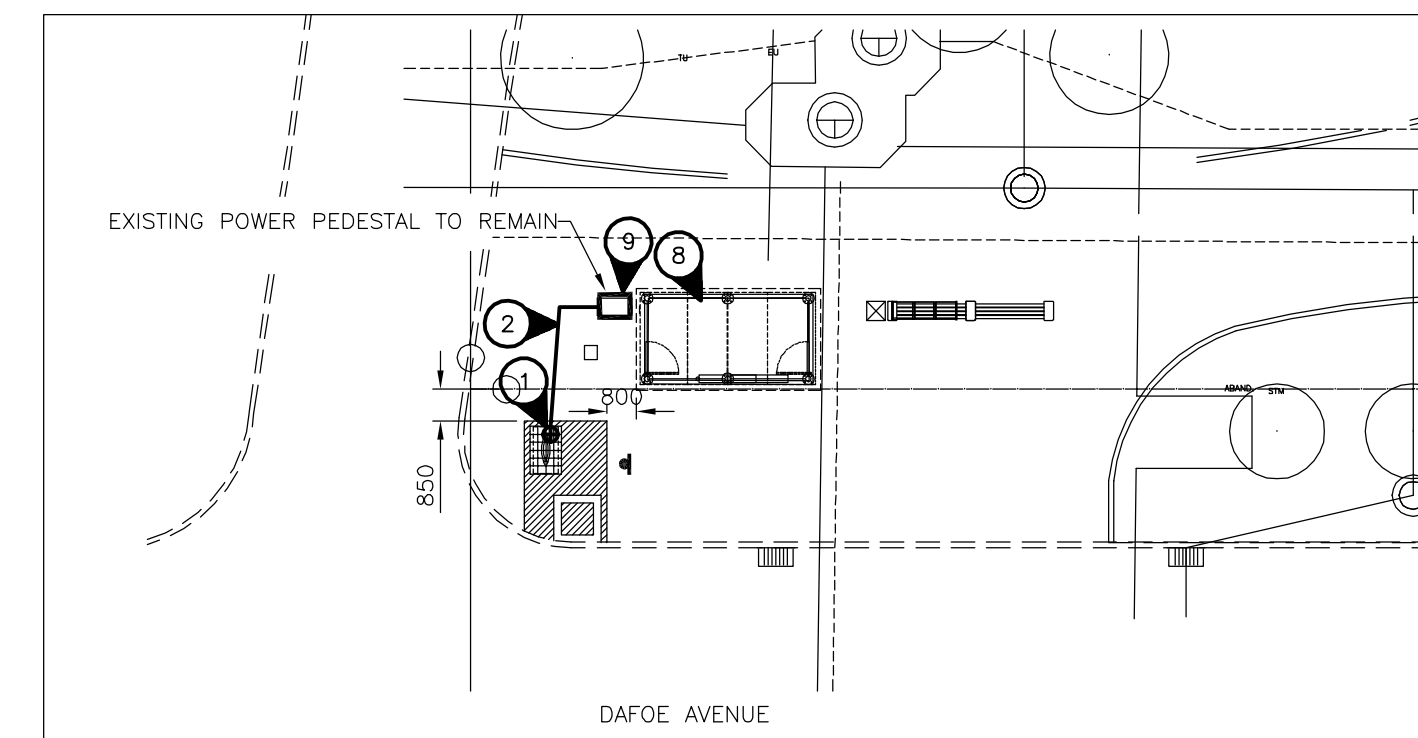
Eastbound Broadway, F/S Osborne
Stop 10585 Osborne East



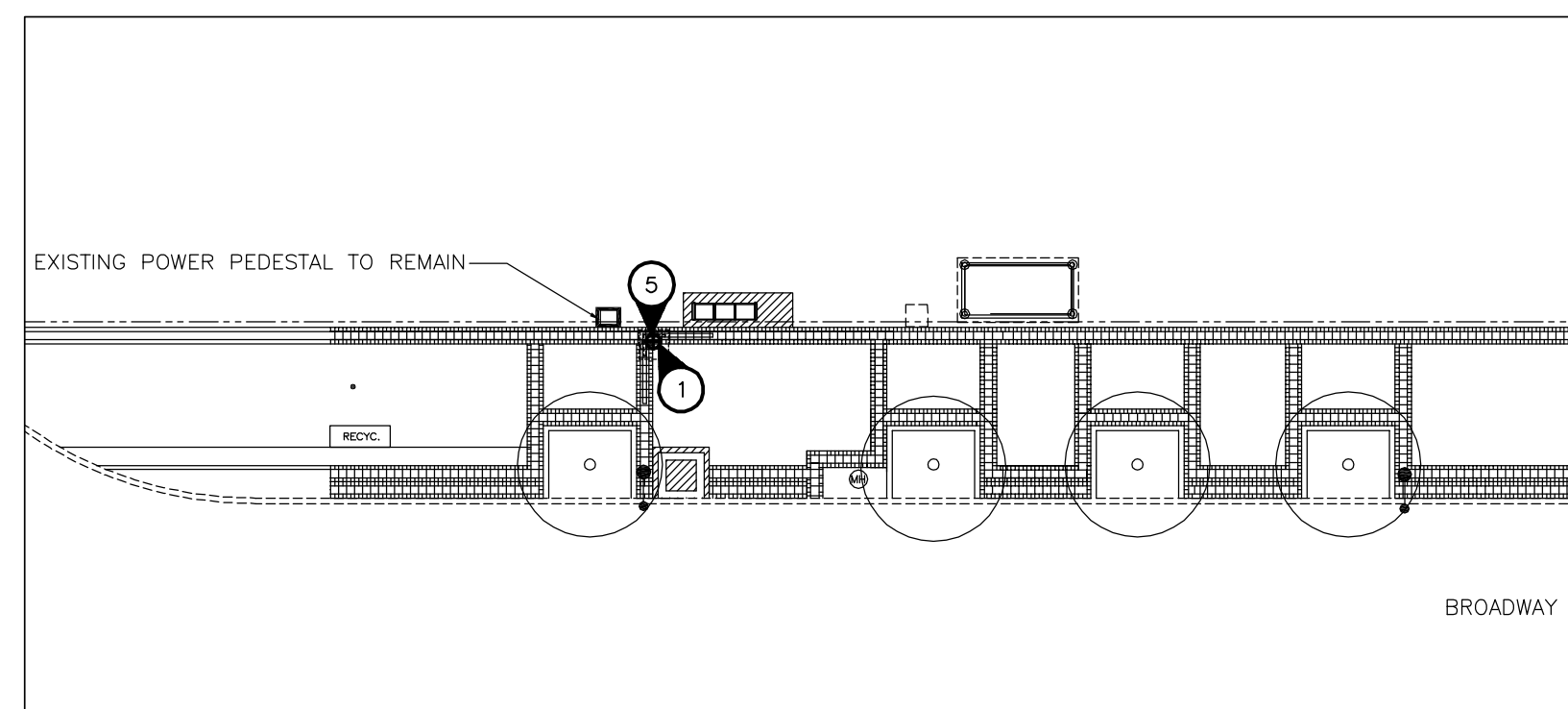
Northbound University, N/S Opp Chancellor Matheson
Stop 60103 Chancellor Matheson



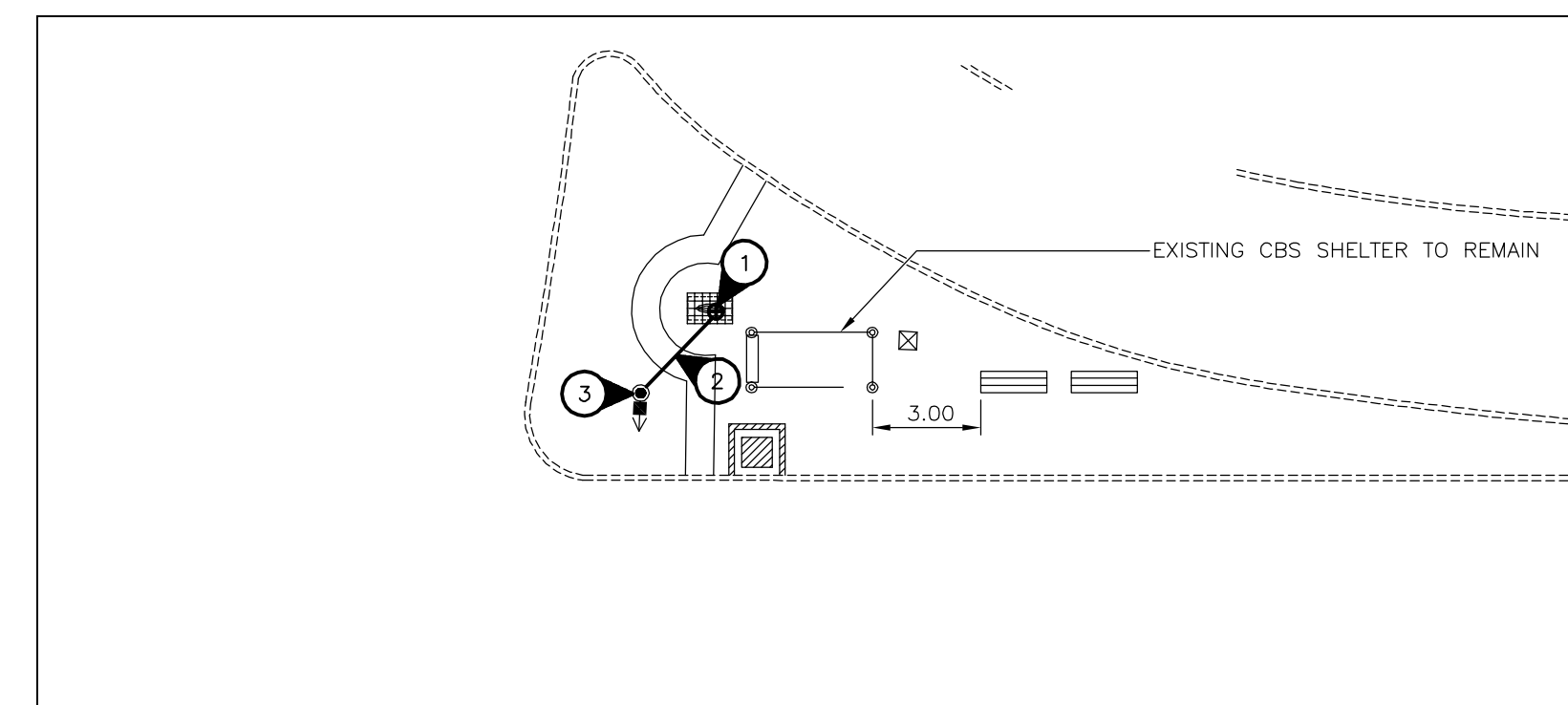
Northbound University, N/S Dysart
Stop 60108 Dysart



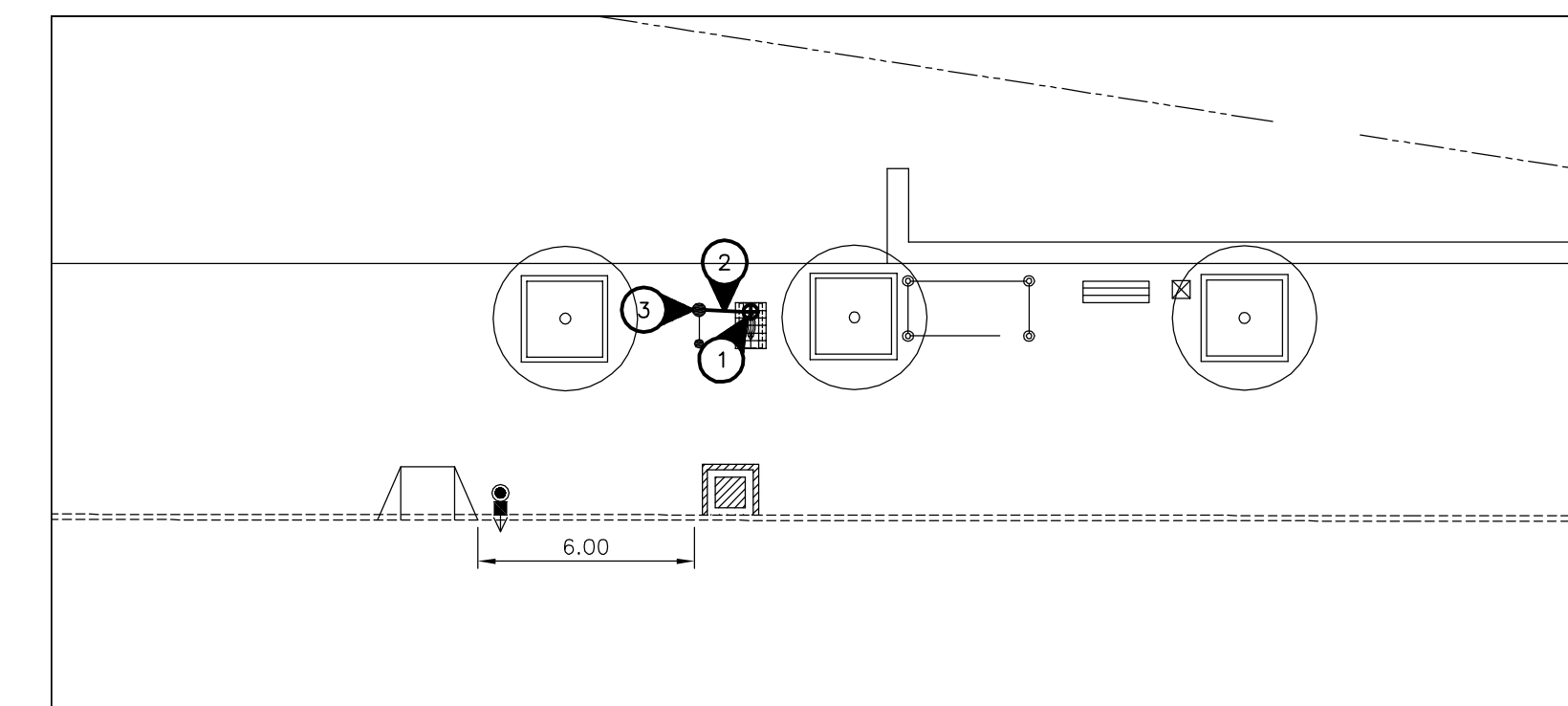
Westbound Dafoe, N/S University
Stop 60105 Dafoe



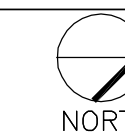
Westbound Broadway, N/S Osborne
Stop 10870 Osborne East



Southbound Queen Elizabeth, N/S Stradbrook
Stop 10159 Stradbrook



Northbound Queen Elizabeth, N/S Opp Mayfair
Stop 10158 Mayfair



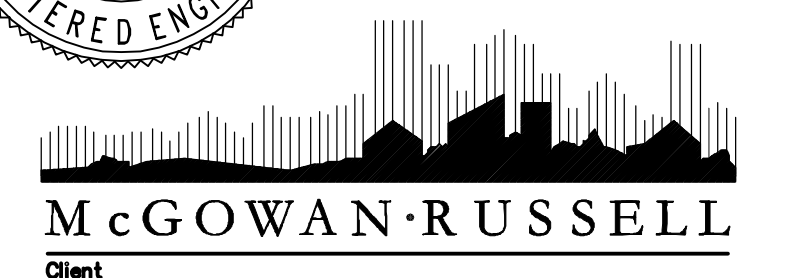
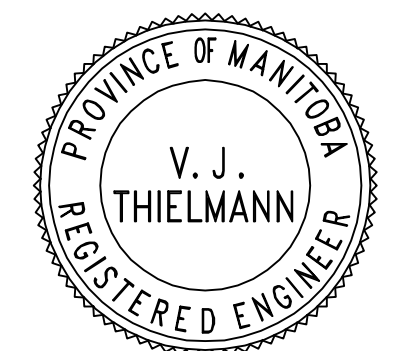
SPECIFIC ELECTRICAL NOTES

- 1 WIRE & CONNECT ILLUMINATED TRANSIT SIGN AS REQUIRED. COORDINATE EXACT LOCATION AND REQUIREMENTS WITH SIGNAGE SUPPLIER.
- 2 BURIED 2 #12 RWU-90 CU AND GROUND IN A 25mm RIGID PVC CONDUIT. PROVIDE TRENCHING, BACKFILLING AND SURFACE REPAIR AS REQUIRED. PUSH BELOW SURFACE WHERE PRACTICAL. PURCHASE CONDUIT FROM MB HYDRO.
- 3 CONNECT NEW SIGN TO EXISTING STREET LIGHT INDICATED. PROVIDE A 15A-2P WEATHER-PROOF SERVICE ENTRANCE RATED DISCONNECT AT SIGN (240V-1PH). FPE RH 102-2.
- 4 2#12 AND 4#10 RWU90 CU AND GROUND IN A 32MM RIGID PVC CONDUIT.
- 5 CONNECT NEW SIGN AND TRANSIT SHELTER LIGHTING AND HEATING CIRCUITS TO EXISTING POWER PEDESTAL.
- 6 CONNECT NEW SIGN AND TRANSIT SHELTER LIGHTING AND HEATING CIRCUITS TO NEW POWER PEDESTAL 'A'. SEE DETAIL ON DRAWING E-1. CONNECT NEW PEDESTAL TO MB HYDRO SERVICE POINT WITH 3/8 RWU90 CU IN 25MM RIGID PVC CONDUIT AT PEDESTAL LOCATION.
- 7 DISCONNECT EXISTING HEATED SHELTER AND METER.
- 8 DISCONNECT EXISTING HEATED SHELTER AND PROTECT WIRES FOR REINSTALLATION. EXISTING WIRING AND C.B.'S MAY BE REUSED IF IN GOOD CONDITION AND SIZED CORRECTLY FOR NEW LOADS. CONNECT NEW SHELTER FOLLOWING INSTALLATION.
- 9 PROVIDE A MATCHING 15A-1P C.B. IN EXISTING POWER PEDESTAL FOR SIGN LIGHTING CIRCUIT. CIRCUIT TO BE PHOTOCELL CONTROLLED.

GENERAL ELECTRICAL NOTES

1. INSTALL JUNCTION BOX IN SHELTER TO PROVIDE POWER FOR LIGHTING AND HEATING CIRCUITS.
2. LABEL ELECTRICAL CIRCUIT AND DEVICES WITH LAMAGOID PLATES.
3. LOCATE ALL EXISTING U/G SERVICES PRIOR TO TRENCHING.
4. MINIMUM WIRE SIZE #12.
5. CONFIRM ALL POWER CONNECTION POINTS WITH ASSOCIATED UTILITY/THE CITY.

No.	Revisions	Date	By
1	ADDENDUM	04.18.08	DZ
Date Scale 04-18-08 1:200			
Designed By	Drawn By	Checked By	
DZ/SL	SL	VJT	



Client
WINNIPEG TRANSIT

Project Title
BUS STOP UPGRADE PROGRAM PHASE 3 ELECTRICAL WORKS

Sheet Title
OSBORNE & DOWNTOWN STOP LAYOUT PLANS

Project No. 28-090 Drawing No. E-5

NOVA 3 ENGINEERING LTD.
CONSULTING ENGINEERS
201-120 FORT STREET WINNIPEG, MANITOBA R3C 1C7
TEL.: (204) 943-6142 FAX.: (204) 942-1276
J.N.: 28-090

THIS DRAWING IS THE EXCLUSIVE PROPERTY OF NOVA 3 ENGINEERING LTD. AND MAY ONLY BE REPRODUCED WITH THE WRITTEN PERMISSION OF NOVA 3 ENGINEERING LTD. THE CONCEPT AND DESIGN INCORPORATED INTO THIS DRAWING ARE BASED ON INFORMATION PROVIDED BY THE CLIENT AND OTHER RELATED SOURCES. PROFESSIONAL ENGINEER ACCEPTS NO RESPONSIBILITY FOR DRAWING AND DESIGN UNLESS DRAWING IS ACCOMPANIED BY ORIGINAL SEALED AND SIGNED LETTER OF INTENT AND CERTIFICATE OF INSPECTION. REFER TO WWW.NOVA3.CA FOR CAUTIONARY NOTES.