

6a

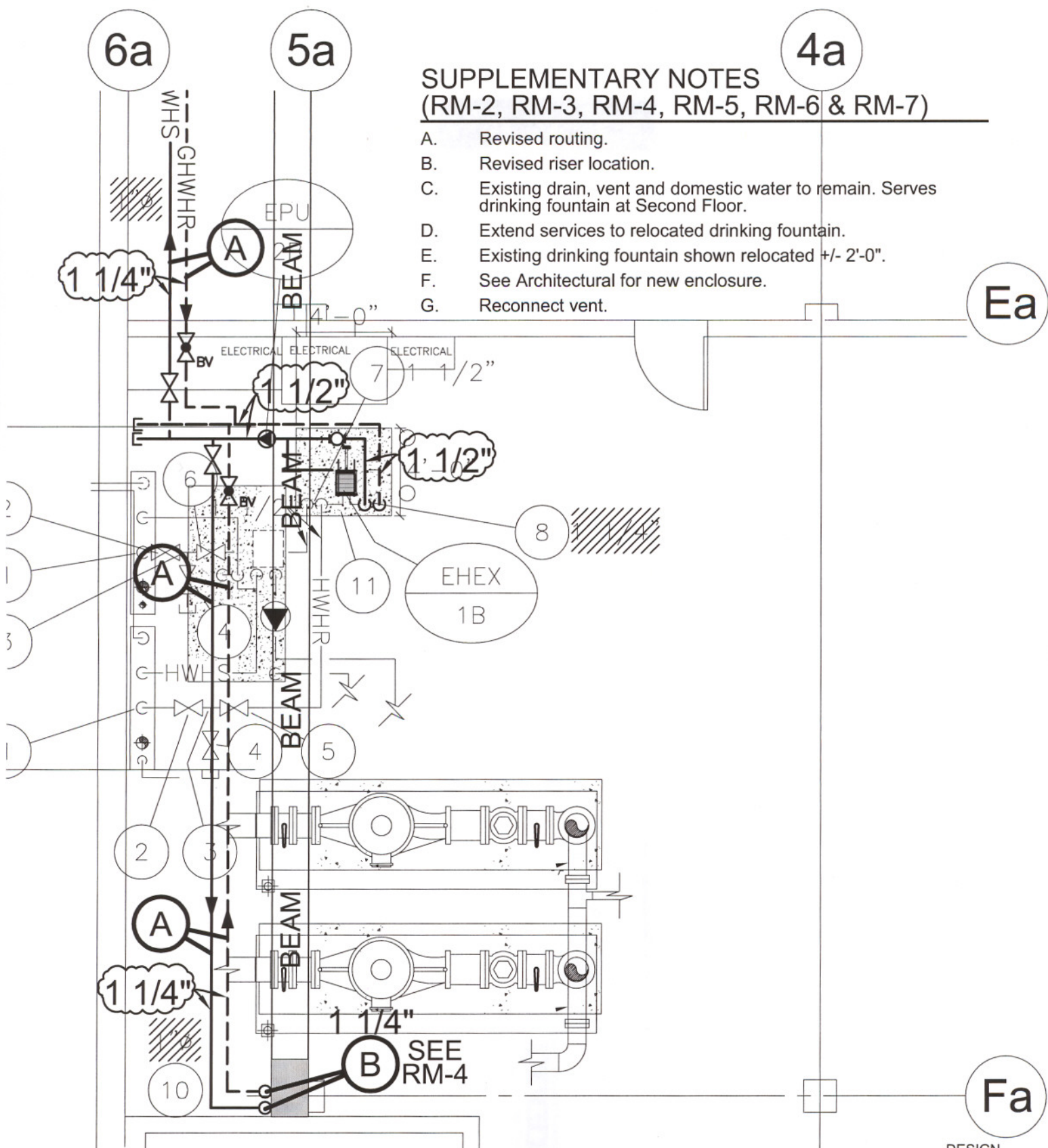
5a

4a

SUPPLEMENTARY NOTES (RM-2, RM-3, RM-4, RM-5, RM-6 & RM-7)

- A. Revised routing.
- B. Revised riser location.
- C. Existing drain, vent and domestic water to remain. Serves drinking fountain at Second Floor.
- D. Extend services to relocated drinking fountain.
- E. Existing drinking fountain shown relocated +/- 2'-0".
- F. See Architectural for new enclosure.
- G. Reconnect vent.

Ea



Fa

DESIGN TRUE



NORTH

PART BASEMENT FLOOR PLAN NO.1 - NEW WORK

SCALE: 3/16" = 1'-0"

PAN AM POOL - EAST VESTIBULES

ADDENDUM NO.2

RM-2



TPR MECHANICAL CONSULTANTS LTD.
101-1555 St James St. Winnipeg, Man. R3H 1B5
Ph. 632-4068 Fax. 632-4066

unies Ltd. Consulting Engineers