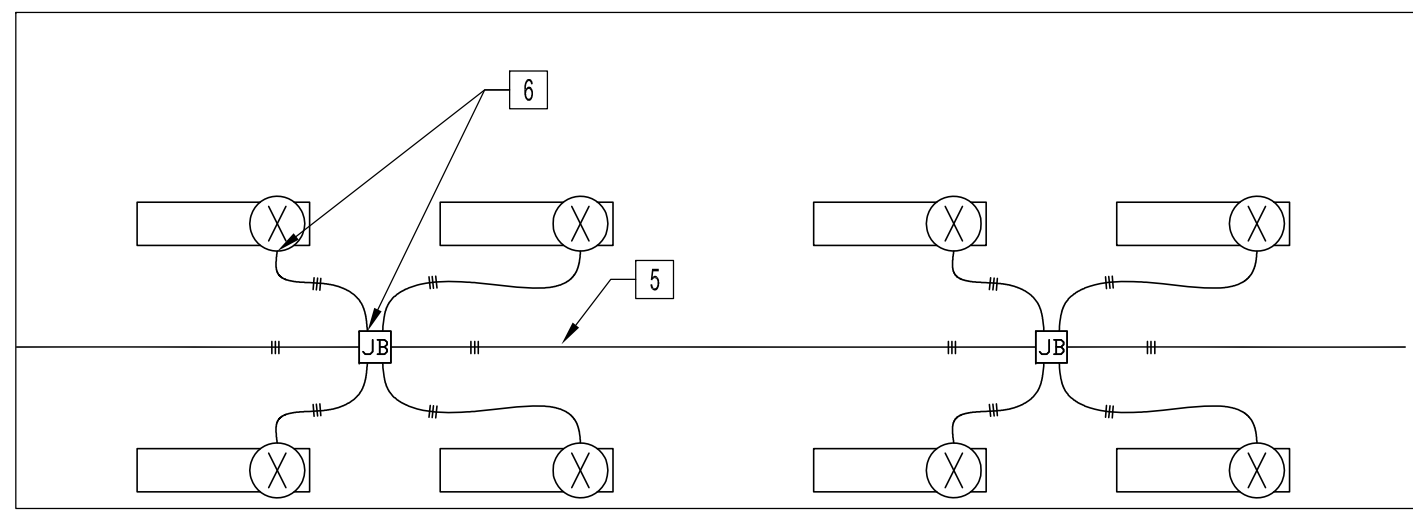
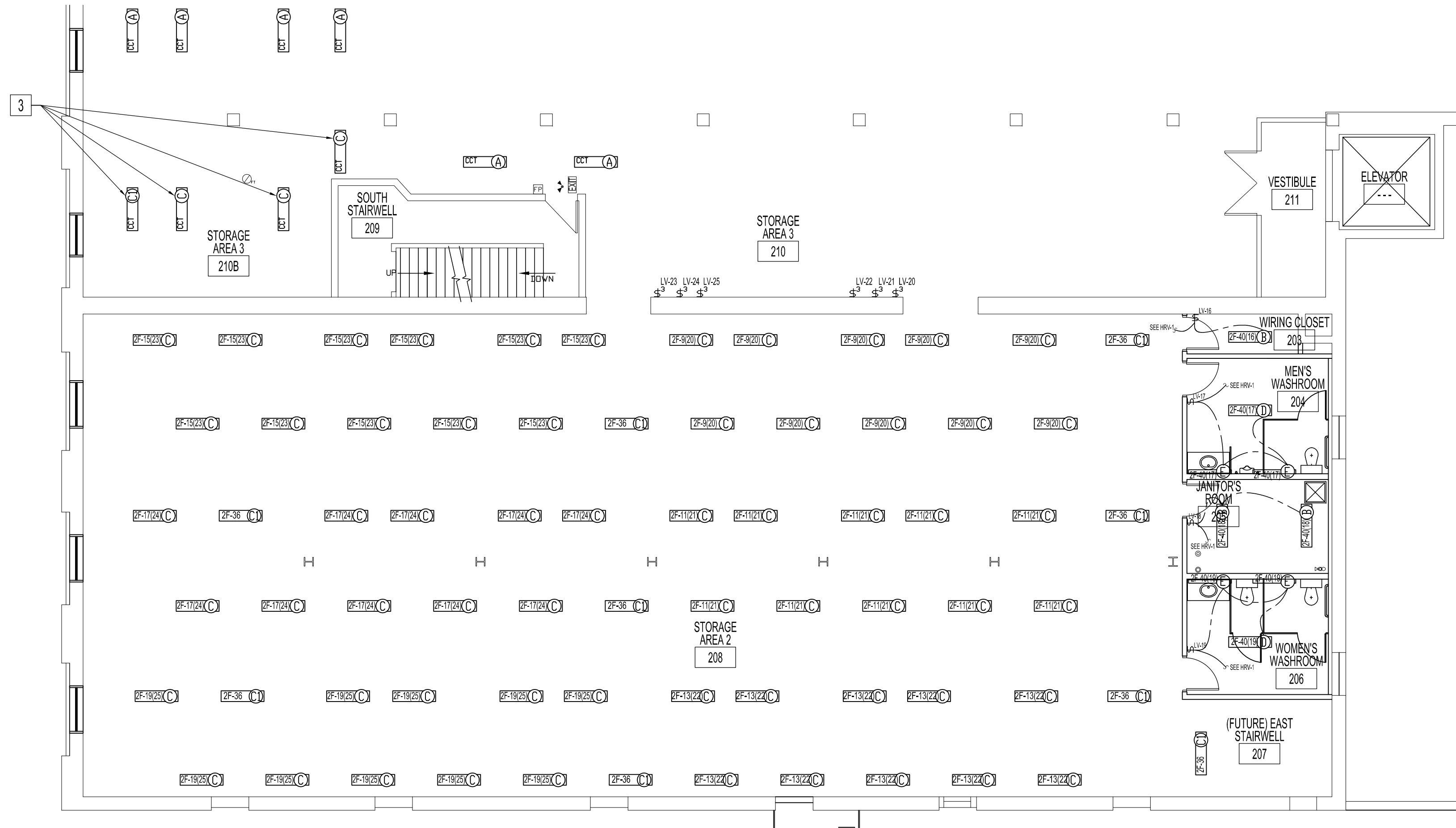


PARTIAL MAIN FLOOR PLAN - RENOVATION - LIGHTING LAYOUT
SCALE: 1/8"=1'-0"



TYPICAL FLOURESCENT FIXTURE WIRING
SCALE: N.T.S.



PARTIAL SECOND FLOOR PLAN - RENOVATION - LIGHTING LAYOUT
SCALE: 1/8"=1'-0"

TYPE	MANUFACTURER	CATALOGUE No.	LAMP	DESCRIPTION
(A)			(2) 32W - T8	1'x4' FLUORESCENT, CHAIN MOUNT (EXIST)
(A1)			(2) 32W - T8	1'x4' FLUORESCENT, CHAIN MOUNT (EXIST NIGHT LIGHT)
(B)			(2) 32W - T8	1'x4' FLUORESCENT, CHAIN MOUNT (EXIST TO BE RELOCATED AS SHOWN)
(C)	LITHONIA	C-2-32-120-GE810IS-WGCSMR-HC	(2) 32W - T8	1'x4' FLUORESCENT, CHAIN MOUNT
(C1)	LITHONIA	C-2-32-120-GE810IS-WGCSMR-HC	(2) 32W - T8	1'x4' FLUORESCENT, CHAIN MOUNT (WIRE TO EXISTING NIGHT LIGHT CIRCUIT)
(D)	LITHONIA	C-2-32-120-GE810IS-HC	(1) 32W - T8	1'x4' FLUORESCENT, CHAIN MOUNT
(E)	LITHONIA	WP-2-32-120-GE810PS-CSA	(2) 32W - T8	WALL BRACKET FLUORESCENT (MOUNT 6'-6" FROM FINISH FLOOR)
(F)	LUMACELL	MT224V9W	9W-24VDC	EMERGENCY DOUBLE HEAD MICRO TUNGSTEN LAMP, ADJUSTABLE LENS, WHITE
(F1)	LUMACELL	MT124V9W	9W-24VDC	EMERGENCY SINGLE HEAD MICRO TUNGSTEN LAMP, ADJUSTABLE LENS, WHITE
(F2)	LUMACELL	RG24S2882MT9WAT	9W-24VDC	EMERGENCY LIGHTING BATTERY UNIT, 288W, 120V INPUT
(G)	LUMACELL	LERLMCEU UNIV C860	LED	EXIT SIGN, SINGLE DOUBLE UNIVERSAL MOUNT

TYPE	DESCRIPTION
(A)	1'x4' FLUORESCENT (EXIST)
(A1)	1'x4' FLUORESCENT (EXIST-NIGHT LIGHT)
(B)	1'x4' FLUORESCENT (EXIST-TO BE RELOCATED)
(CL)	CEILING LUMINAIRE
(S)	SPRINKLER HEAD (EXIST), UNLESS OTHERWISE NOTED
(SN)	SPRINKLER HEAD (NEW)
EX	EXIST - TO REMAIN
(EX)~	EXIT LIGHT W/DIRECTION
(E)	ELECTRICAL RECEPTACLE
(D)	ELECTRICAL DISCONNECT
(C)	CLOCK RECEPTACLE
(H)	ELECTRIC BASE BOARD HEATER
(U)	UNIT HEATER, NATURAL GAS, POWER VENTED
(F)	FIRE ALARM BELL
(F1)	FIRE ALARM MANUAL PULL STATION
(S)	FIX TEMP SENSOR
(DL)	EMERGENCY DOUBLE HEAD LAMP
(EL)	EMERGENCY LIGHTING BATTERY UNIT
(SD)	SMOKE DETECTOR (ADDRESSABLE)
(SM)	SECURITY MOTION DETECTOR
(HW)	ELECTRIC WATER HEATER
(CW)	DOMESTIC COLD WATER
(HW)	DOMESTIC HOT WATER

PROVIDE COMPLETE FIXTURE HANGERS.
ALL NEW LIGHTING FIXTURES AND BALLASTS TO BE POWER SMART APPROVED.
HANG LIGHTING FIXTURES TO SAME HEIGHT AS EXISTING ON THIRD FLOOR WASHROOMS 306 & 307, STORAGE 308, & JANITOR 305.

- RENOVATION NOTES:**
ALSO SEE NOTES.
- REWORK EXISTING LIGHT CIRCUIT FOR FUNCTION & COMPLIANCE WITH LATEST CANADIAN ELECTRICAL CODE.
 - REWIRE TO EXISTING STORAGE 115, LIGHT SWITCH CIRCUIT/ RELAY, 2A-6(2).
 - REWIRE TO EXISTING STORAGE AREA #3-210, LIGHT SWITCH CIRCUIT/RELAY.
 - RELOCATE EXISTING FLUORESCENT LIGHT FIXTURE AS SHOWN. REWIRE TO NEW INPUT SWITCH AS SHOWN IN RELAY SCHEDULE, RP 3-1, (3RD FLOOR)
 - ALL EMT LIGHTING CONDUIT SHALL BE EQUALLY SPACED BETWEEN ROWS OF LIGHT FIXTURES AND RUN PARALLEL. SEE ELECTRICAL SPECIFICATION.
 - CONNECTION FROM LIGHT FIXTURE TO CEILING MOUNTED JUNCTION BOX SHALL BE A SINGLE STEEL ARMORED CABLE (AC90), LIGHT FIXTURE TO LIGHT FIXTURE CONNECTION NOT ALLOWED.
 - USE EXISTING LIGHTING RELAY PANEL & ELECTRICAL PANEL ON SECOND FLOOR, IF POSSIBLE. SUPPLY & INSTALL WITH REQUIRE COMPONENTS, INCLUDING RELAYS, CONDUITS, TERMINAL STRIPS & JUNCTION BOX WITH TERMINAL BLOCKS FOR BRANCH CIRCUITS.
IF NOT POSSIBLE, ADVISE CONTRACT ADMINISTRATOR PRIOR TO USING EXISTING LIGHTING RELAY PANEL, RP3-1, & ELECTRICAL PANEL, 2F, ON THIRD FLOOR. SPARE RELAYS ARE AVAILABLE IN PANEL. WIRE AS PER RELAY SCHEDULE RP3-1 SHOWN ON THIS DRAWING.

NOTES :
THESE DRAWINGS SHALL NOT BE SCALED.
THE CONTRACTOR SHALL VISIT THE SITE AND SATISFY HIMSELF ALL DIMENSIONS, DATUM, AND DETAILED INFORMATION SHOWN ARE CORRECT.
THE CONTRACTOR IS TO REVIEW AND COORDINATE ALL ARCHITECTURAL, MECHANICAL, ELECTRICAL, AND STRUCTURAL DRAWINGS & SPECIFICATIONS FOR OVERALL SCOPE OF WORK, INCLUDING ADDITIONAL OPENINGS THROUGH FLOORS, WALLS, AND CEILINGS FOR DUCT, PIPE & ELECTRICAL RISERS AND ALL OPENINGS NOT SHOWN ON DRAWINGS.
ALL EXISTING & NEW OPENINGS INCLUDING EXISTING ELECTRICAL & MECHANICAL COMPONENTS THROUGH FIRE ASSEMBLIES ARE TO BE FIRE STOPPED AND SEALED BY A N FIRESTOPPING MANUFACTURER AS HAVING THE NECESSARY EXPERIENCE, STAFF AND TRAINING TO INSTALL MANUFACTURER'S PRODUCT PER SPECIFIED REQUIREMENTS. MATERIAL SHALL BE UL APPROVED FIRE STOPPING TO MAINTAIN THE INTEGRITY OF THE FIRE SEPARATION, AND PROVIDE A SMOKE-TIGHT BARRIER.
RELOCATE &/OR REROUTE &/OR REMOVE ALL EXISTING SURFACE MOUNTED &/OR RECESS ELECTRICAL, WIRING, CABLES, CONDUIT, JUNCTION BOXES TO ACCOMMODATE NEW COMPONENTS SHOWN ALL NEW WIRING, CONDUITS & COMPONENTS SHALL BE CONCEALED IN WALL OR CEILING AND SHALL BE NEATLY ROUTED ALONG BUILDING STRUCTURES.
ALL PRODUCTS AND MATERIALS TO BE USED AND INSTALLED SHALL CONFORM WITH MANUFACTURER'S SPECIFICATIONS & APPLICABLE CODES.
THE CONTRACTOR SHALL BE RESPONSIBLE TO PATCH AND MAKE GOOD ALL EXISTING CONSTRUCTION AFFECTED BY THE REMOVAL OF ALL ITEMS FORMING THE PART OF THE RENOVATION WORK.
SUPPLY & INSTALL DISCONNECT SWITCHES, CIRCUIT BREAKERS AND WIRING ACCORDING TO FINAL NAMEPLATES OF THE MECHANICAL EQUIPMENT AT NO-COST.
SUPPLY & INSTALL RELAY COMPONENTS TO SUIT EXISTING RELAY PANELS FOR A FULLY FUNCTIONING SYSTEM.

SHEET No:	SHEET TITLE
E1	PARTIAL MAIN & SECOND FLOOR PLANS-RENOVATION ELECTRICAL LIGHTING
E2	PARTIAL MAIN & SECOND FLOOR PLANS-RENOVATION ELECTRICAL POWER & SYSTEMS
E3	ELECTRICAL SPECIFICATIONS

PANEL	RELAY OUTPUTS			LOCATION	LOCAL CONTACT INPUTS		
	CIRCUIT	RELAY	LOAD (W)		INPUT SWITCH	RELAYS CONTROLLED	LOCATION
2F	04	01	980	STORAGE AREA 311	1	6,7	STORAGE AREA 301
2F	06	02	980	STORAGE AREA 311	2	6,7	STORAGE AREA 301
2F	08	03	1050	STORAGE AREA 311	3	1,2	STORAGE AREA 311
2F	10	04	980	STORAGE AREA 311	4	3,4	STORAGE AREA 311
2F	12	05	1280	STORAGE AREA 311	5	5	STORAGE AREA 311
2F	14	06	770	STORAGE AREA 301	6	1,2	STORAGE AREA 311
2F	16	07	770	STORAGE AREA 301	7	3,4	STORAGE AREA 311
2F	18	08	840	STORAGE AREA 309	8	5	STORAGE AREA 311
2F	20	09	840	STORAGE AREA 309	9	8,9,10	STORAGE AREA 311
2F	22	10	840	STORAGE AREA 309	10	11,12,13	STORAGE AREA 311
2F	24	11	770	STORAGE AREA 309	11	8,9,10	STORAGE AREA 311
2F	26	12	770	STORAGE AREA 309	12	11,12,13	STORAGE AREA 311
2F	28	13	770	STORAGE AREA 309	13	14	JANITOR
2F	30	14	140	JANITOR	14	15	WOMEN'S WASHROOM
2F	30	15	105	WOMEN'S WASHROOM	15	16	WOMEN'S WASHROOM
2F	30	16	105	WOMEN'S WASHROOM	16	17	WIRING CLOSET 203
2F	40	17	70	WIRING CLOSET 203	17	18	MEN'S WASHROOM 204
2F	40	18	105	MEN'S WASHROOM 204	18	19	JANITOR ROOM 205
2F	40	19	140	JANITOR ROOM 205	19	20	WOMEN'S WASHROOM 206
2F	40	20	105	WOMEN'S WASHROOM 206	20	21	STORAGE AREA 2, 208
2F	9	21	770	STORAGE AREA 2, 208	21	22	STORAGE AREA 2, 208
2F	11	22	770	STORAGE AREA 2, 208	22	23	STORAGE AREA 2, 208
2F	13	23	770	STORAGE AREA 2, 208	23	24	STORAGE AREA 2, 208
2F	15	24	840	STORAGE AREA 2, 208	24	25	STORAGE AREA 2, 208
2F	17	25	770	STORAGE AREA 2, 208	25	26	STORAGE AREA 2, 208
2F	19	26	770	STORAGE AREA 2, 208			

EXISTING RELAY OUTPUTS & LOCAL CONTACT INPUTS FOR THIRD FLOOR

1 MEN'S WASHROOM 111-WATER CLOSET BESIDE LAVATORY WAS AN URINAL. ADDED 2ND FLOOR LIGHTING RELAY PANEL & ELEC PANEL TO RENO NOTE 7. REVISED NOTE FROM LIGHT FIXTURE SCHEDULE *PROVIDE CROUSE HINDS BALL ALINER & FIXTURE HANGER* & PROVIDE SUPPORT BRACKET SUITABLE FOR 440 LBS PER FIXTURE.* DTA 2008 1205

PANEL	RELAY OUTPUTS			LOCATION	LOCAL CONTACT INPUTS		
	CIRCUIT	RELAY	LOAD (W)		INPUT SWITCH	RELAYS CONTROLLED	LOCATION
2A	04	01	635	LOBBY	1	2,3	STORAGE AREA 115
2A	06	02	1280	STORAGE AREA 115	2	2,3	STORAGE AREA 115
2A	08	03	1190	STORAGE AREA 115	3	2,3	STORAGE AREA 115
2A	10	04	840	STORAGE AREA 129	4	7,8	STORAGE AREA 129
2A	12	05	1120	STORAGE AREA 129	5	7,8	STORAGE AREA 129
2A	14	06	1050	STORAGE AREA 129	6	5	STORAGE AREA 129
2A	16	07	910	STORAGE AREA 129	7	4	STORAGE AREA 129
2A	18	08	70	WIRING CLOSET 110	8	7,8	STORAGE AREA 129
2A	18	09	105	MEN'S WASHROOM 111	9	5	STORAGE AREA 129
2A	18	10	140	JANITOR 112	10	4	STORAGE AREA 129
2A	18	11	105	WOMEN'S WASHROOM 113	11	1	LOBBY
		12		SPARE	12	1	LOBBY
		13		SPARE	13	8	WIRING CLOSET 110
		14		SPARE	14	9	MEN'S WASHROOM 111
		15		SPARE	15	10	JANITOR 112
		16		SPARE	16	11	WOMEN'S WASHROOM 113

EXISTING RELAY OUTPUTS & LOCAL CONTACT INPUTS FOR MAIN FLOOR

DRAWN BY DTA **CHECKED BY** USER **APPROVED**

DATE 2008.12.01 **USER APPROVAL**

CITY OF WINNIPEG
PLANNING, PROPERTY AND DEVELOPMENT DEPARTMENT
CIVIC ACCOMMODATIONS DIVISION
300 - 65 GARRY ST. R3C 4K4

PROJECT
SURPLUS STORAGE FACILITY
MAIN & SECOND FLOOR RENOVATION

311 ROSS AVENUE

SHEET TITLE
PARTIAL MAIN & SECOND FLOOR PLANS
RENOVATION
ELECTRICAL LIGHTING

SCALE AS SHOWN **PROJECT NO.** 2008-016-02 **SHEET NO.** E1R1

DRAWING SHEET SIZE: A1 (841mm x 594mm) PLOT 1:1