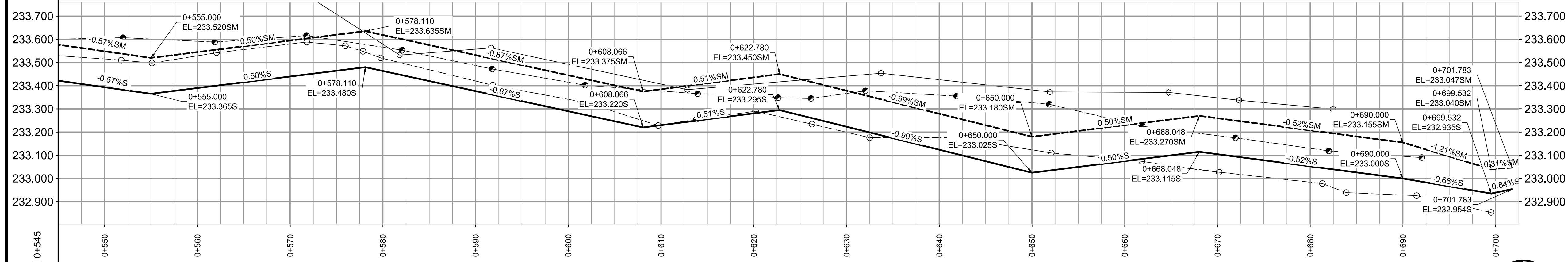
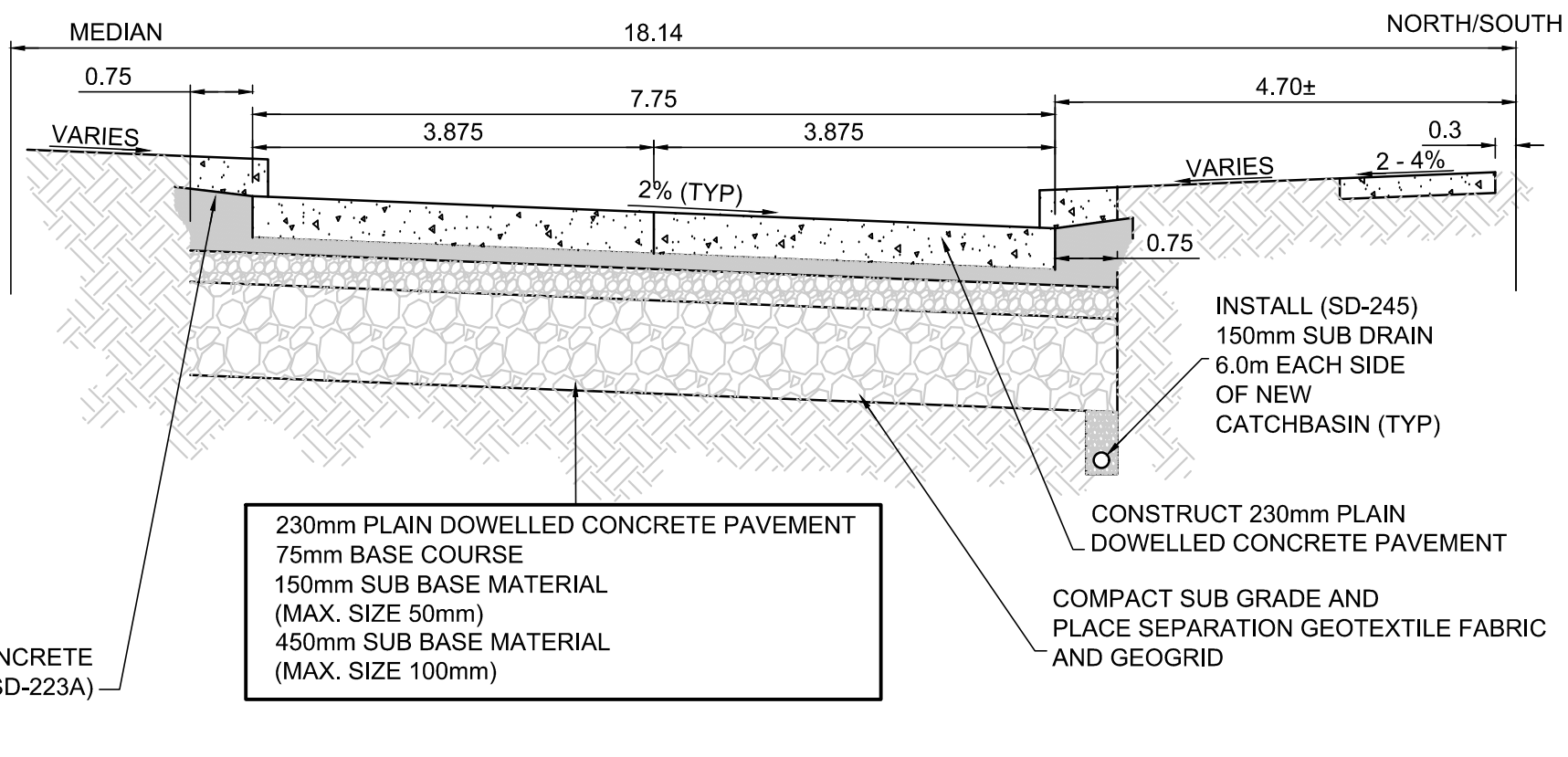


WESTBOUND PROFILE

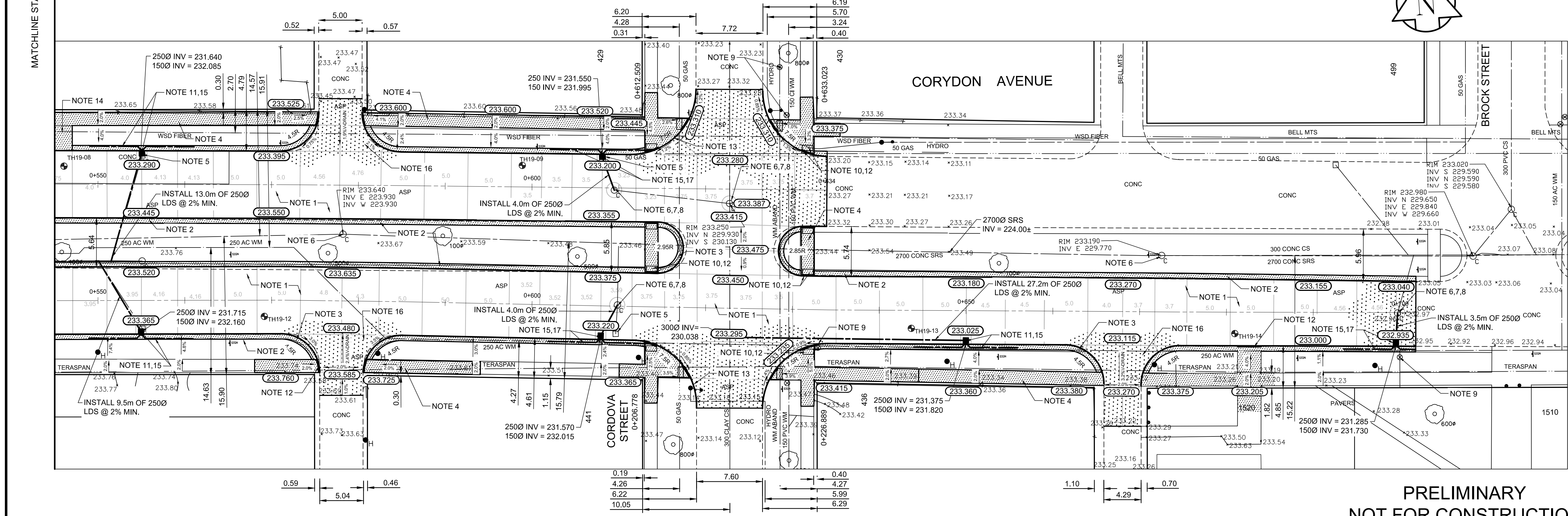
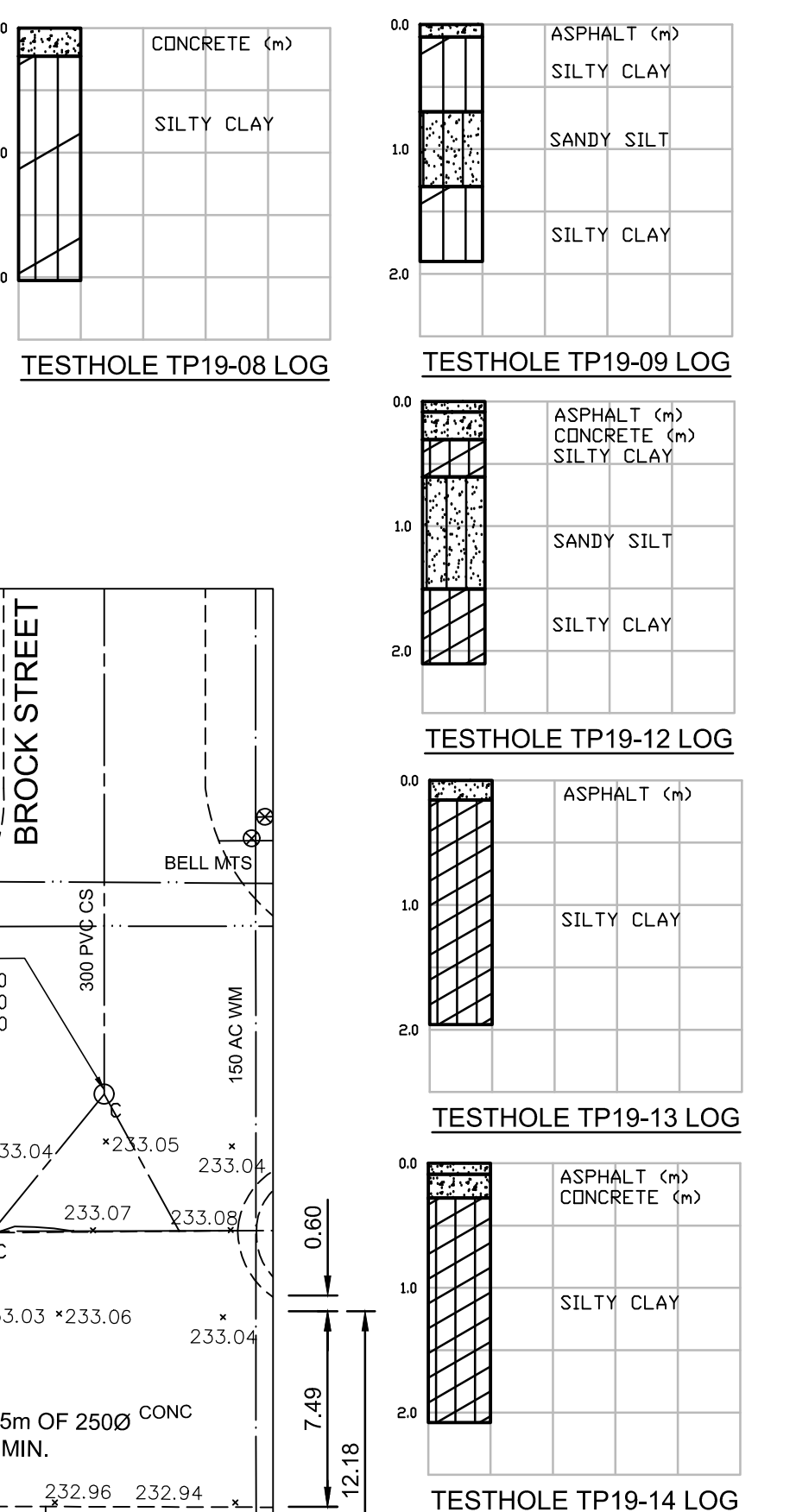


EASTBOUND PROFILE

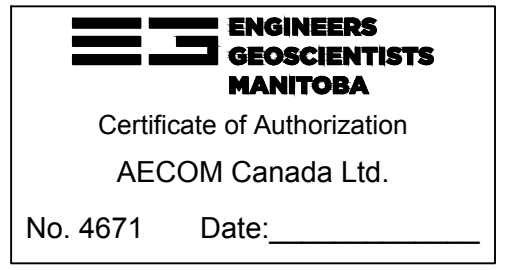


TYPICAL CROSS SECTION

- REFERENCE NOTES:
- PAVEMENT DIMENSIONS ARE TO BACK OF CURB
 - BASELINE IS CENTRE LINE ROADWAY
 - PROPERTY LINES OBTAINED FROM CITY OF WINNIPEG L.B.I.S., AND NO SCALE FACTOR WAS APPLIED
 - REFER TO AECOM FIELD BOOK NO. 5031
- CONSTRUCTION NOTES:
- REMOVE EXISTING PAVEMENT AND CONSTRUCT NEW 230mm PLAIN DOWELED CONCRETE PAVEMENT
 - CONSTRUCT NEW MONOLITHIC CONCRETE SPLASH STRIP (180mm HT SEPARATE)
 - CONSTRUCT NEW MODIFIED MONOLITHIC CONCRETE SPLASH STRIP (180mm HT, SEPARATE)
 - RENEW EXISTING 100mm CONCRETE SIDEWALK
 - REMOVE EXISTING CATCHBASIN/CATCHPIT AND PLUG EXISTING LEAD
 - ADJUST EXISTING CATCH BASIN/MANHOLE TO GRADE
 - REMOVE EXISTING FRAME AND COVER AND PLACE NEW FRAME AND COVER
 - INSTALL NEW CAST IRON RISER RING
 - ADJUST EXISTING WATERMAIN VALVE BOX TO GRADE
 - INSTALL NEW DETECTABLE SURFACE WARNING TILES
 - INSTALL NEW CURB AND GUTTER INLET c/w CATCHBASIN (SD-024) AND CONNECT NEW 250mm LEAD TO EXISTING 300 CLAY COMBINED SEWER (AP-006/AP-007)
 - CONSTRUCT NEW CURB RAMP (10-12mm REVEAL HT. INTEGRAL)
 - CONSTRUCT NEW MODIFIED BARRIER CURB (180mm HT. INTEGRAL)
 - CONSTRUCT NEW 100mm CONCRETE BUSPAD
 - INSTALL 150mm SUBDRAIN 6m ON EACH SIDE OF CATCHBASIN
 - REMOVE EXISTING PAVEMENT AND CONSTRUCT NEW 200mm REINFORCED CONCRETE PAVEMENT
 - INSTALL NEW CURB AND GUTTER INLET c/w CATCHBASIN (SD-024) AND CONNECT NEW 250mm LEAD TO EXISTING MANHOLE



PRELIMINARY
NOT FOR CONSTRUCTION



150mm W.M.	WATERMAIN	150mm W.M.	HYDRO	— X —	PROFILE
Hydrant	HYDRANT	Hydrant	M.T.S.	— X —	NORTH GUTTER
Valve	VALVE	Valve	CONCRETE	— X —	NORTH MEDIAN GUTTER
300mm L.D.S.	LAND DRAINAGE SEWER	300mm L.D.S.	ASPHALT	— X —	N PROPERTY LINE
250mm W.W.S.	WASTEWATER SEWER	250mm W.W.S.	PROPERTY LINE	— X —	SOUTH GUTTER
Manhole	MANHOLE	Manhole	SURVEY BAR	— X —	SOUTH MEDIAN GUTTER
Catch Basin	CATCH BASIN	Catch Basin	ELEVATION (235.750)	— X —	S PROPERTY LINE
Catch Pit	CATCH PIT	Catch Pit	TREE	— X —	
Junctions	JUNCTIONS	Junctions	SIDEWALK RAMP	— X —	
Culvert	CULVERT	Culvert	CONCRETE SIDEWALK	— X —	
Gas	GAS	Gas	FENCE	— X —	
EXISTING	LEGEND - PLAN	PROPOSED	EXISTING	LEGEND - PLAN	PROPOSED
EXISTING	LEGEND - PROFILE	PROPOSED	EXISTING	LEGEND - PROFILE	PROPOSED

LOCATION APPROVED UNDERGROUND STRUCTURES

SUPV. U/G STRUCTURES COMMITTEE DATE

NOTE:
LOCATION OF UNDERGROUND STRUCTURES AS SHOWN ARE BASED ON THE BEST INFORMATION AVAILABLE. BUT NO GUARANTEE IS GIVEN THAT ALL EXISTING UTILITIES ARE SHOWN OR THAT THE GIVEN LOCATIONS ARE EXACT. CONFIRMATION OF EXISTENCE AND EXACT LOCATION OF ALL SERVICES MUST BE OBTAINED FROM THE INDIVIDUAL UTILITIES BEFORE PROCEEDING WITH CONSTRUCTION.

B.M. ELEV.	23	N-W COR. JOHN BREBUB & RENFEW ST.
		TBLT. IN E. CONC. FOUNDATION OF NO.1707 ST. JOHN BREBUB SCHOOL, 1.5m N. & 0.2m BELOW BRICK OF S.E. COR. OF SCHOOL.
		ELEVATION: 233.864
1	ADDENDUM No. 1	05/03/2019 RC
0	ISSUED FOR TENDER	04/24/2019 JT
A	ISSUED FOR REVIEW	04/09/2019 JT
NO.	REVISIONS	DATE BY

DESIGNED BY	JT	CHECKED BY	RC/KWR
DRAWN BY	JT	APPROVED BY	
HOR. SCALE:	1:250	ORIGINAL SIGNED BY:	
VERT. SCALE:	1:10	DATE	04/09/2019

ENGINEER'S SEAL

R.T. CUNNINGHAM
Member 24711
REGISTERED PROFESSIONAL ENGINEER

THE CITY OF WINNIPEG
PUBLIC WORKS DEPARTMENT
ENGINEERING DIVISION

2019 REGIONAL STREET
RENEWAL PROGRAM

CITY DRAWING NUMBER
P-3507-06

SHEET 06 OF 08

CORDYON AVENUE WESTBOUND - LANARK STREET TO CORDOVA STREET
CORDYON AVENUE EASTBOUND - BOREBANK STREET TO BROCK STREET

CONCRETE PAVEMENT RECONSTRUCTION
STATION 0+545 TO END LIMIT

CONSULTANT DRAWING NO.
CT-06