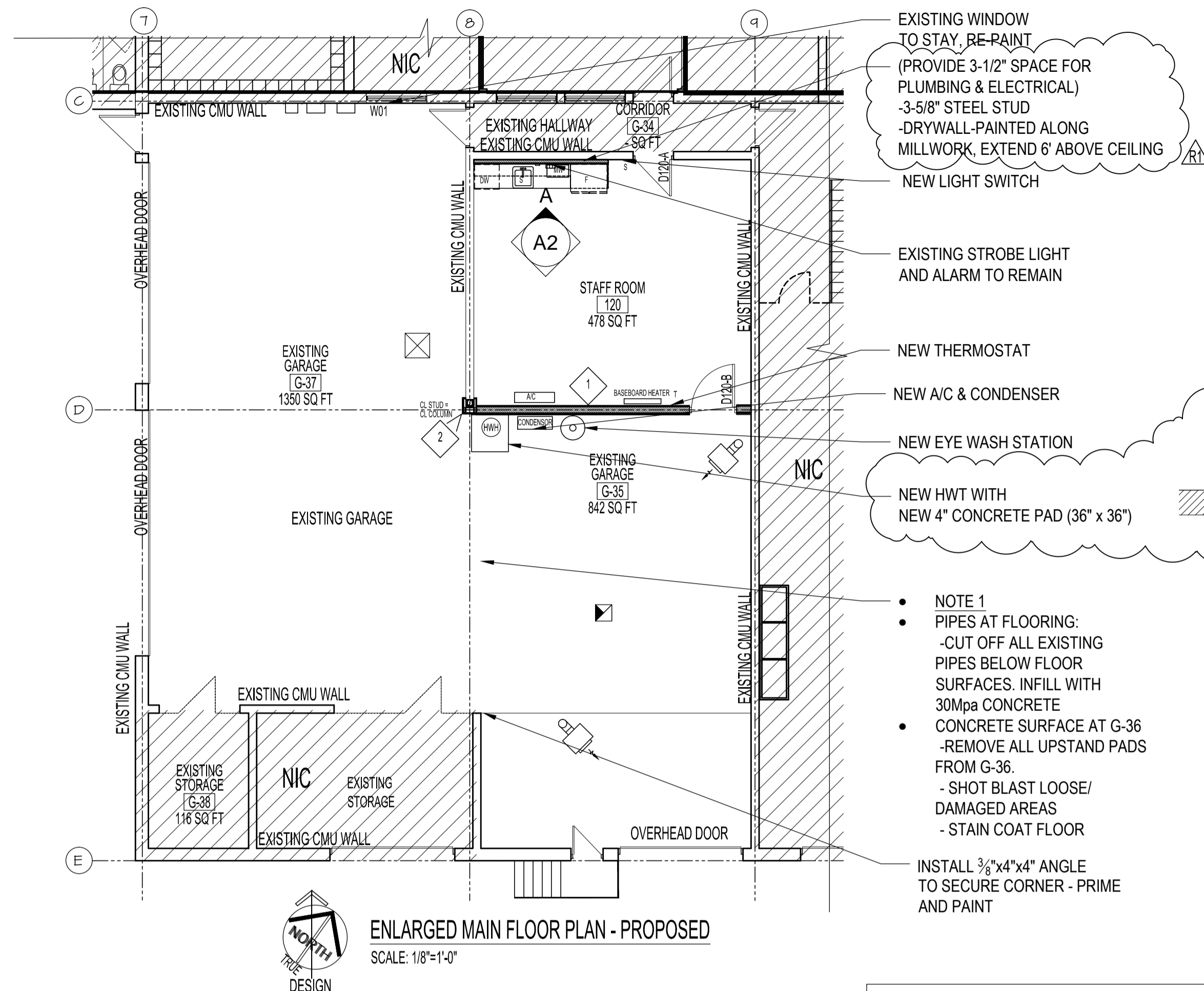
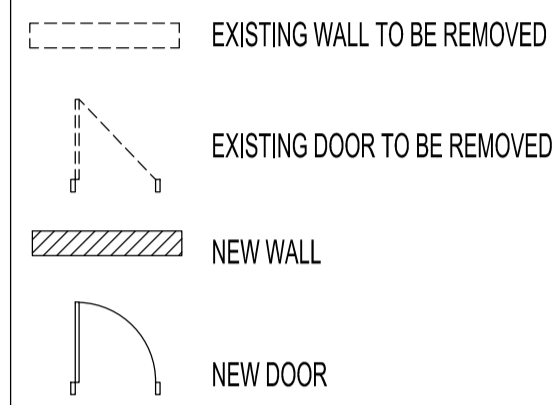


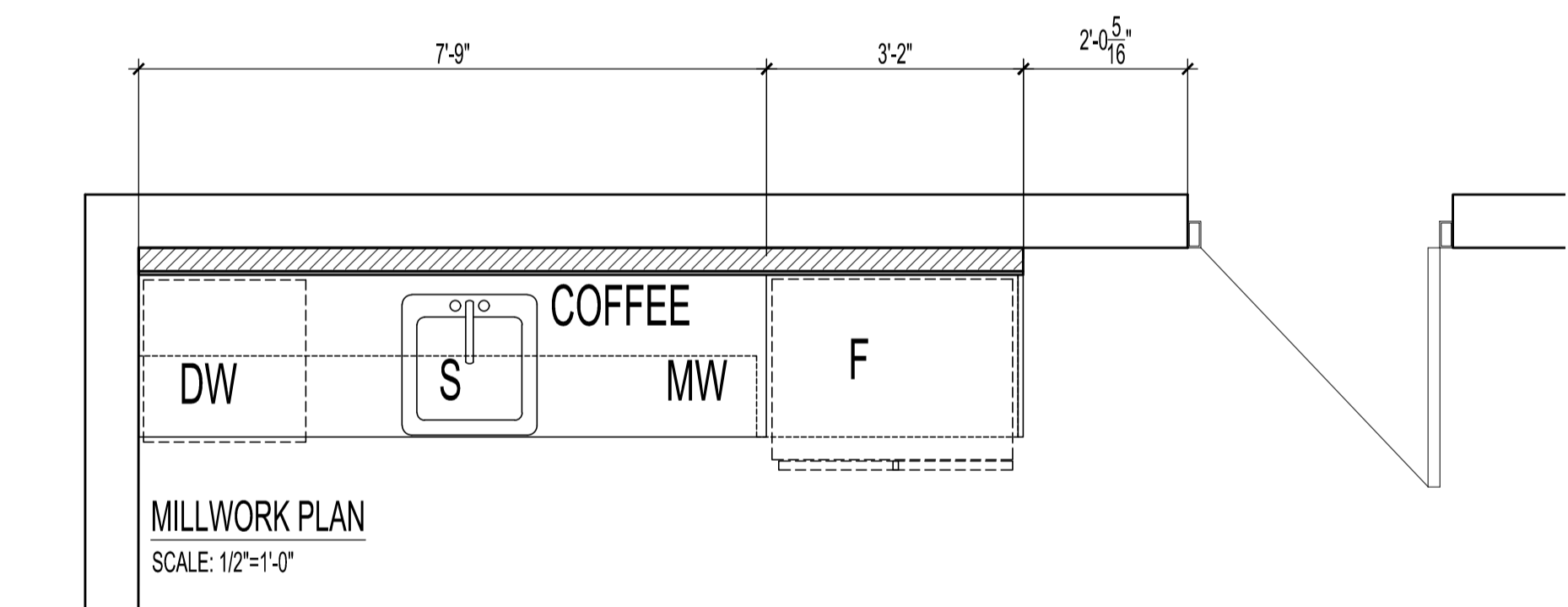
**DEMOLITION NOTES:**

- 1 REMOVE SINK
- 2 SEE PROPOSED NOTE 1
- 3 REMOVE EXISTING LIGHTS
- 4 RELOCATE THERMOSTAT
- 5 REPLACE EXISTING HWT WITH NEW HWT - SEE MECH
- 6 EXISTING LIGHTS TO REMAIN IN THE GARAGE AREA

**SYMBOL LEGEND:**



- EXISTING WINDOW TO STAY, RE-PAINT**  
(PROVIDE 3-1/2" SPACE FOR PLUMBING & ELECTRICAL)  
-3-5/8" STEEL STUD  
-DRYWALL-PAINTED ALONG MILLWORK, EXTEND 6' ABOVE CEILING  
NEW LIGHT SWITCH
- EXISTING STROBE LIGHT AND ALARM TO REMAIN
- NEW THERMOSTAT
- NEW A/C & CONDENSER
- NEW EYE WASH STATION
- NEW HWT WITH NEW 4" CONCRETE PAD (36" x 36")
- NOTE 1  
PIPES AT FLOORING:  
-CUT OFF ALL EXISTING PIPES BELOW FLOOR SURFACES. INFILL WITH 30Mpa CONCRETE  
-REMOVE ALL UPSTAND PADS FROM G-36.  
- SHOT BLAST LOOSE/DAMAGED AREAS  
- STAIN COAT FLOOR
- INSTALL 3/4" x 4" ANGLE TO SECURE CORNER - PRIME AND PAINT
- 25 MPA CONCRETE WITH 8mm 200x200 WIRE MESH REINFORCEMENT
- SHOT BLAST PORTION OF EXISTING SLAB & PROVIDE BONDING AGENT



**PLASTIC LAMINATE**  
PL #1 ARBORITE ELEGANT WHITE S550 (SIDES AND FRONTS)  
PL #2 ARBORITE TATAMI NIKKI P298(SIDES AND FRONTS)

**MELAMINE**  
ALL INTERIOR CABINETS TO BE WHITE MELAMINE

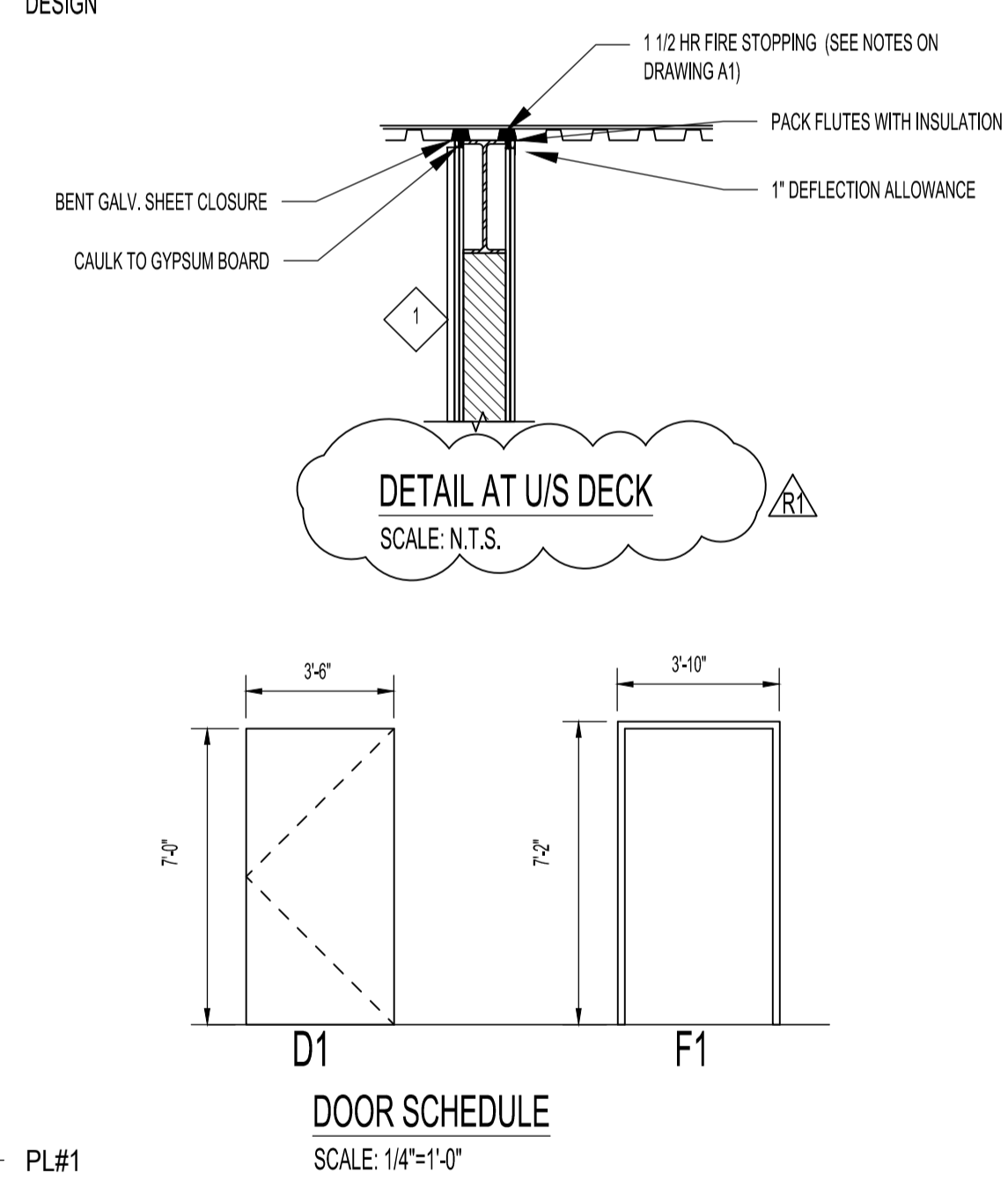
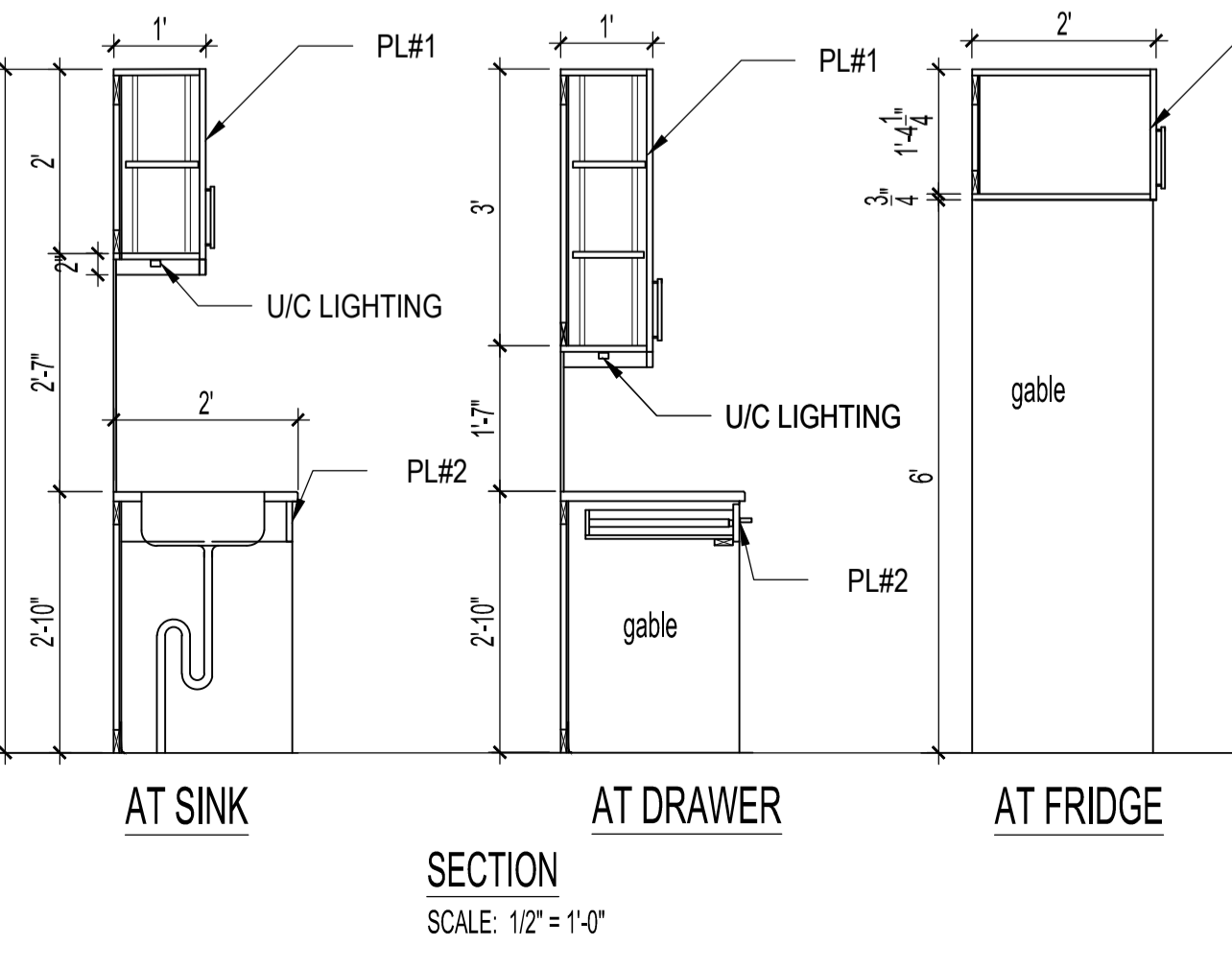
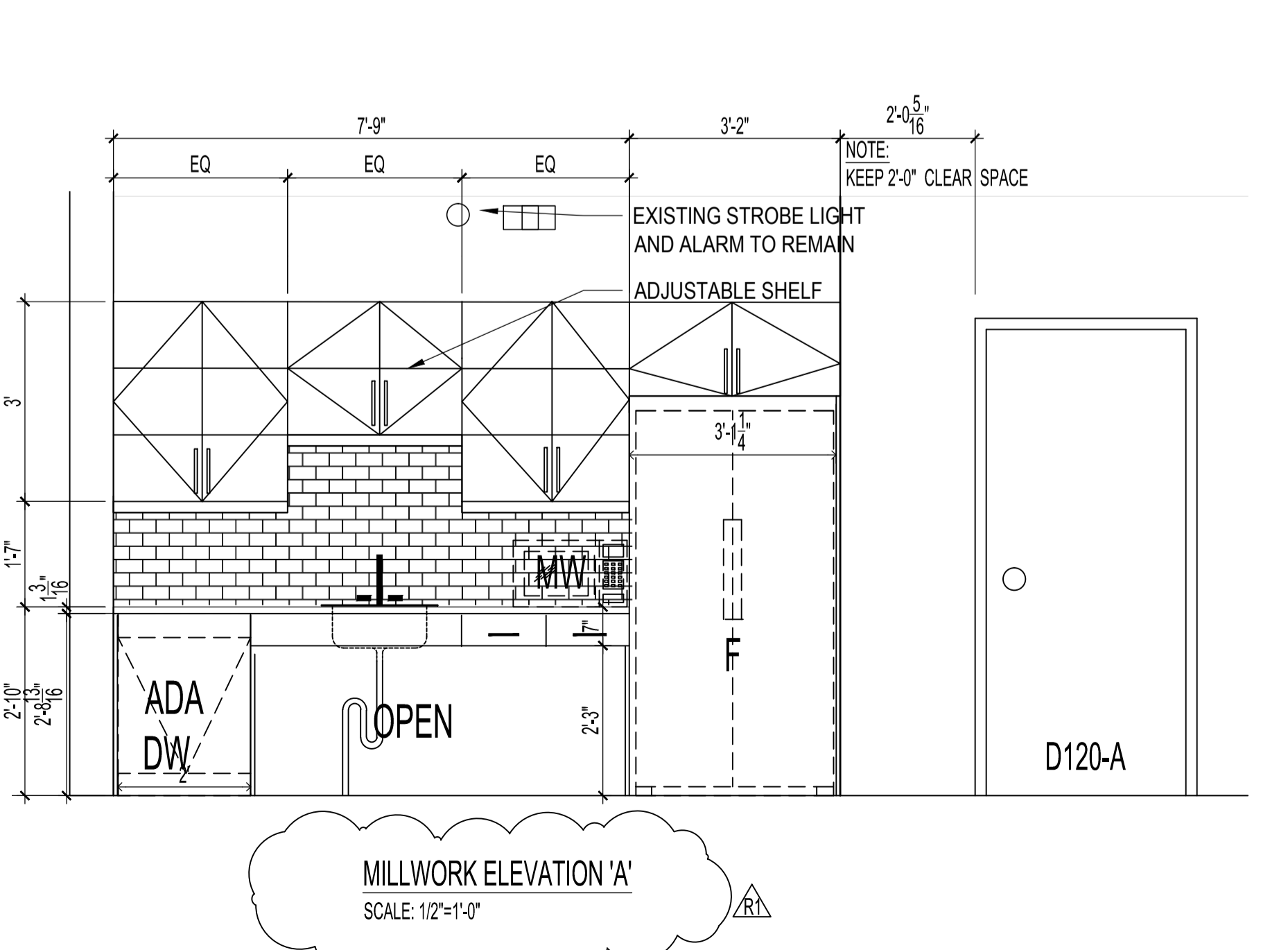
**HARDWARE**  
DRAWER & DOOR PULLS: HAFELE 101.20.701 STEEL NICKEL MATTE @ 226MM LENGTHS  
DRAWER SLIDES: ACCURIDE #3832 FULL EXTENSION SIDE MOUNT  
HINGES: BLUM CLIP 170° SELF CLOSING NICKEL FINISH  
RECESSED SHELF SUPPORTS: K&V PILASTER ZINC

**SINK**  
QSL202077 - 3 HOLE - 1-1/2" DIAMETER, 4" CENTER-TO-CENTER FUN #101.0045.226  
SIZE: 20 1/2" X 20" X 7"

**COUNTERTOP**  
CEASARSTONE 3CM THICK INTENSE WHITE 6011

**BACKSPLASH**  
MEROLA TILE 3"x6" TESSERA BLUE SMOLE

**NOTE:**  
CONFIRM APPLIANCE DIMENSION



**DOOR SCHEDULE**  
SCALE: 1/4"=1'-0"

DOOR NO.	DOOR			FRAME			HARDWARE GROUP	NOTES			
	TYPE	WIDTH	HEIGHT	THICK.	MAT'L.	FINISH			TYPE	MAT'L.	FINISH
D120-B	D1	3'-6"	7'-0"	1 1/2"	H.M.	PT	F1	P.S.	PT	1	1.0H FRR

- ABBREVIATIONS**  
H.M.-HOLLOW METAL PT.-PAINT P.S.-PRESSED STEEL
- HARDWARE STANDARD:**  
GROUP #1  
1.0 HR FIRE RATED DOOR  
3 - HINGES NRP  
1 - LOCKSET (PASSAGE)  
1 - CLOSER  
1 - KICKPLATE  
2 - SMOKE SEAL W21 x 84 BLK  
1 - SMOKE SEAL W21 x 42 BLK  
1 - DOOR SWEEP  
1 - FLOOR STOP
- SHLAGE. LEVER TYPE. SATIN NICKEL FINISH

**WALLS:**

1 NBC Table A-9.10.3.1.A S9b 1.5H FRR  
(2) LAYERS 1/2" TYPE "X" GWB  
-HIGH IMPACT DW  
6" STEEL STUDS 20Ga @12"O.C.  
150MM THK. MINERAL FIBRE ABSORPTIVE MATERIALS  
(2) LAYERS 1/2" TYPE "X" GWB  
-HIGH IMPACT DW  
METAL LINER 22Ga(GARAGE SIDE ONLY)  
UP TO U/S OF DECK

2 ULC X518 2HR FRR  
(2) LAYER 1/2" TYPE "X" GWB  
-HIGH IMPACT  
1-5/8" STEEL STUDS  
ALL AROUND STEEL COLUMN  
UP TO U/S DECK  
METAL LINER 22Ga(GARAGE SIDE ONLY)

**NOTES:**

ORIGINAL STAMPED BY: NEIL COOPER, NCA  
DATE: 2019.09.18

No.	REVISION/DESCRIPTION	BY	DATE
1	ISSUED FOR ADDENDUM #1	AR	OCT 29 2019
0	ISSUED FOR CONSTRUCTION	AR	SEPT 26 2019

**SEAL**

DRAWN: [Signature] AR  
CHECKED: [Signature] NC  
DESIGNED: [Signature] NC  
APPROVED: [Signature] AR  
DATE: 2019.09.18

**THE CITY OF WINNIPEG**  
PLANNING, PROPERTY AND DEVELOPMENT DEPARTMENT  
MUNICIPAL ACCOMMODATIONS DIVISION  
3-65 GARRY STREET, R3C 4K4

**PROJECT**  
PUBLIC WORKS SOUTH YARD  
INTERIOR RENOVATIONS

1539 WAVERLEY STREET BID OPP: 944-2019

**SHEET TITLE**  
DEMO PLAN, PROPOSED PLAN  
SCHEDULES, DETAIL

**SCALE** AS SHOWN **PROJECT No:** 2018-018 **SHEET No:** A2-R1

DRAWING SHEET SIZE: A1 (841mm x 594mm) PLOT 1:1

**Neil Cooper Architect**  
109-374 River Avenue, Winnipeg, Manitoba R3L 0E4