

- CONSTRUCTION NOTES:**
- ALL WORK AND MATERIALS TO BE IN ACCORDANCE WITH LATEST REVISION OF THE CITY OF WINNIPEG STANDARD CONSTRUCTION SPECIFICATIONS.
 - LEGAL PLAN AND UNDERGROUND INFORMATION FROM CITY OF WINNIPEG LBIS. CONTRACTOR TO VERIFY ALL UNDERGROUNDS IN THE FIELD.
 - CONTRACTOR TO TAKE PRECAUTIONARY STEPS TO AVOID DAMAGE FROM CONSTRUCTION ACTIVITIES TO TREES WITHIN THE LIMITS OF CONSTRUCTION.
 - LOCATION OF EXISTING UTILITIES/SERVICES TO BE CONFIRMED IN THE FIELD BY THE CONTRACTOR.
 - ADJUST EXISTING WATER VALVES, WATER SERVICE CURB STOPS AND HYDRANT ASSEMBLIES TO GRADE.
 - MODIFIED BARRIER CURB TO BE USED AT ALL INTERSECTION RADII.
 - ADJUST MANHOLE AND CATCH BASIN RIMS TO NEW GRADES.
 - CONTRACTOR TO REGRADE/RENEW EXISTING PRIVATE SIDEWALKS TO LIMITS AS SHOWN. SIDEWALKS TO BE RENEWED WITH CONCRETE UNLESS OTHERWISE NOTED.
 - CB LEADS TO BE INSTALLED AT MIN 1.0% SLOPE OR AS DIRECTED BY THE CONTRACT ADMINISTRATOR.
 - LIMITS OF BOULEVARD GRADING TO BE FINALIZED IN THE FIELD BY THE CONTRACT ADMINISTRATOR.
 - CONTRACTOR TO CONFIRM LOCATION AND LIMITS OF SEWER REPAIRS BY PERFORMING VIDEO INSPECTION AND REVIEWING WITH THE CONTRACT ADMINISTRATOR PRIOR TO CONSTRUCTION.
 - LAMP STANDARDS, HYDRO POLES AND ANCHORS THAT REQUIRE TEMPORARY SUPPORT, REMOVAL OR REPLACEMENT, TO BE DONE AT THE EXPENSE OF THE CONTRACTOR, AS NECESSARY.
 - INSTALL 6 m OF 150 mm SUBDRAIN TO CATCH BASINS IN BOTH DIRECTIONS PARALLEL TO ROADWAY AS PER SD-245 AND CAP ENDS.

ABBREVIATIONS:

CONC	CONCRETE ROADWAY
ASP	ASPHALT ROADWAY
ASP OVLY	ASPHALT OVERLAY ROADWAY
PVS	PAVING STONE/BRICK
TYP	TYPICAL
EX	EXISTING
MH	MANHOLE
WV	WATER VALVE
EL	ELEVATION
CB	CATCH BASIN
CP	CATCH PIT
CI	CURB INLET
CL	CONTROL LINE

METRIC

WHOLE NUMBERS INDICATE MILLIMETRES
DECIMALIZED NUMBERS INDICATE METRES

WARNING

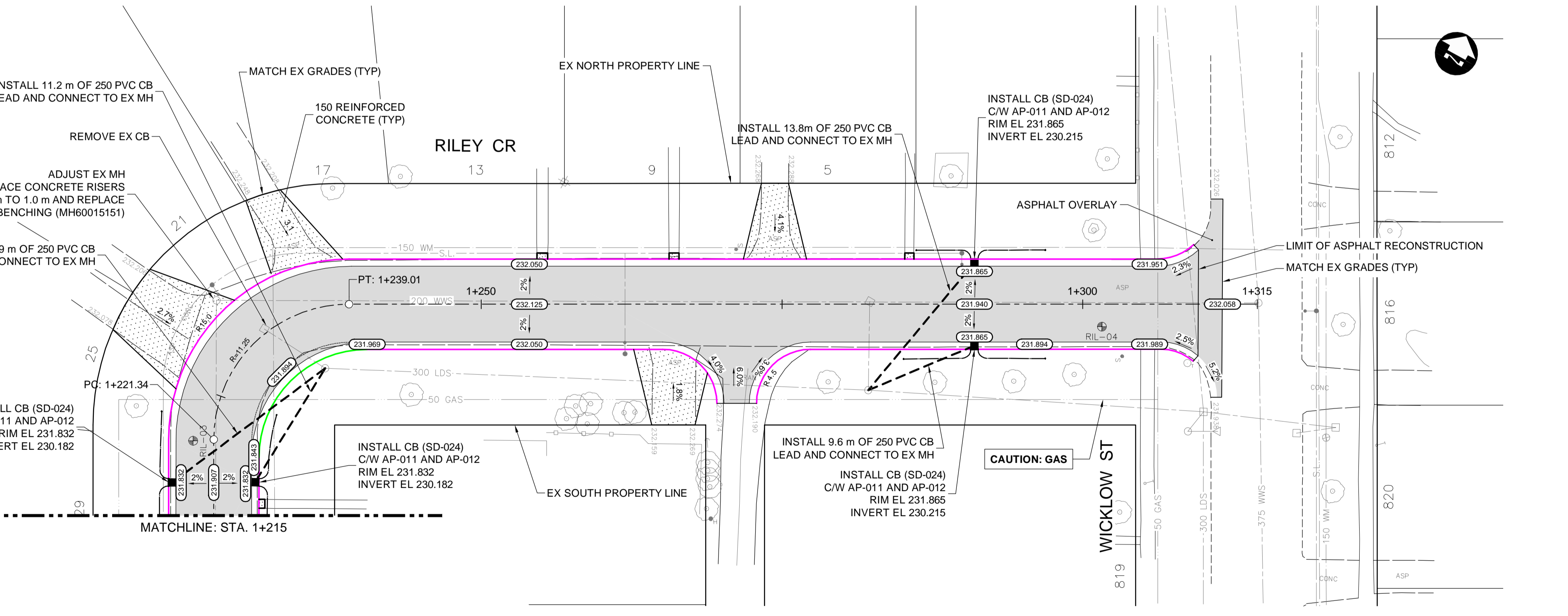
IF POWER EQUIPMENT OR EXPLOSIVES ARE TO BE USED FOR EXCAVATION ON THIS PROJECT THE CONTRACTOR MUST:

- NOTIFY THE GAS COMPANY OF THE PROPOSED LOCATION OF EXCAVATION.
- TAKE PRECAUTION TO AVOID DAMAGE TO GAS COMPANY INSTALLATIONS SEE PROVINCIAL REGULATION 210/72 FOR DETAILS.
- OBTAIN EXCAVATION PERMITS PRIOR TO CONSTRUCTION.

CURB LEGEND

BARRIER CURB (SD-203A, SD-204, SD-205 OR SD-206A)	—
MODIFIED BARRIER CURB (SD-203B)	—
BARRIER CURB AND GUTTER (SD-200)	—
75 mm LIP CURB AND GUTTER (DETAIL 1, SHT 25)	—
40 mm LIP CURB AND GUTTER (DETAIL 2, SHT 25)	—
MODIFIED BARRIER CURB AND GUTTER (DETAIL 3, SHT 25)	—

**PRELIMINARY ONLY
NOT FOR CONSTRUCTION**



C:\w\working\directory\projects\2020_40jfa\3737\202958-RIL-CT-CON-PLAN-PROFILE.dwg

HYDRANT	CONCRETE	WATERMAIN	150 WWS
VALVE	ASPHALT	LAND DRAINAGE SEWER	300 LDS
MANHOLE	SIDEWALK	WASTE WATER SEWER	250 WWS
CATCH BASIN	PAVING STONES	HYDRANT	
CATCH PIT	PAVEMENT REPAIR FABRIC	VALVE	
150 WWS	PARTIAL DEPTH REPAIR	PROFILE	
300 LDS	PROPERTY LINE	NORTH/WEST GUTTER	
250 WWS	ELEVATION	SOUTH/EAST GUTTER	
HYDRANT	CURB RAMP	NORTH/WEST DITCH	
M.T.S.	DETECTABLE TILE	SOUTH/EAST DITCH	
100 GAS			
EXISTING	LEGEND-PLAN	PROPOSED	EXISTING
	LEGEND-PROFILE	PROPOSED	EXISTING

UNDERGROUND STRUCTURES

SUPV. U/G STRUCTURES DATE

LOCATION OF UNDERGROUND STRUCTURES AS SHOWN ARE BASED ON THE BEST INFORMATION AVAILABLE, BUT NO GUARANTEE IS GIVEN THAT ALL EXISTING UTILITIES ARE SHOWN OR THAT THE GIVEN LOCATIONS ARE EXACT. CONFIRMATION OF EXISTENCE AND EXACT LOCATION OF ALL SERVICES MUST BE OBTAINED FROM THE INDIVIDUAL UTILITIES BEFORE PROCEEDING WITH CONSTRUCTION.

B.M. ELEV.			
DESIGNED BY	JAT		
DRAWN BY	TJH		
CHECKED BY	JNC		
APPROVED BY	DBW		
HOR. SCALE	1:250		
VERTICAL	1:10		
NO.	REVISIONS	DATE	BY
1	ISSUED AS ADDENDUM #1	21/03/08	DBW
0	ISSUED FOR TENDER	21/02/23	DBW

DILLON CONSULTING

DESIGNED BY: JAT
DRAWN BY: TJH
CHECKED BY: JNC
APPROVED BY: DBW

RELEASED FOR CONSTRUCTION

DATE: _____

ENGINEER'S SEAL

TENDER DRAWING

NOT TO BE USED FOR CONSTRUCTION

CONSULTANT PROJECT NUMBER: 20-2958

THE CITY OF WINNIPEG
PUBLIC WORKS DEPARTMENT

2021 LOCAL STREETS RENEWAL PROGRAM 21-R-05:
DOWKER AVENUE, RILEY CRESCENT AND VARIOUS OTHER LOCATIONS

RILEY CRESCENT - PLAN-PROFILE
(STA. 1+215 TO END)

CITY DRAWING NUMBER: _____
SHEET 06 OF 26
CONSULTANT DRAWING NUMBER: _____