

- CONSTRUCTION NOTES**
- REMOVE EXISTING PAVEMENT AND CONSTRUCT NEW 150mm REINFORCED CONCRETE PAVEMENT
  - MILL EXISTING ASPHALT OVERLAY
  - CONSTRUCT NEW ASPHALT OVERLAY (+/- 80mm)
  - INSTALL NEW CURB AND GUTTER INLET FRAME (AP-011) AND COVER (A-012)
  - INSTALL NEW CATCH PIT WITH CURB AND GUTTER INLET FRAME (SD-023), AND CONNECT TO CATCH BASIN WITH 250mm PVC PIPE AS PER CW 2130
  - REMOVE EXISTING CURB AND CONSTRUCT NEW BARRIER CURB (SD-205)
  - ADJUST CURB AND GUTTER INLET FRAME
  - REMOVE EXISTING SIDEWALK AND CONSTRUCT NEW 100mm CONCRETE SIDEWALK (SD-228A)
  - ADJUST MANHOLE TO GRADE
  - RE-GRADE EXISTING PRIVATE WALK
  - INSTALL NEW STANDARD PRECAST CONCRETE MANHOLE (SD-010) WITH SOLID COVER (AP-007) AS PER CW 2130
  - INSTALL NEW CHAIN LINK FENCING AND FENCE GATES AS DIRECTED BY CONTRACT ADMINISTRATOR

- GENERAL NOTES**
- PAVEMENT DIMENSIONS ARE TO BACK OF CURB
  - ALL CURB RADII UNDER 15.0m SHALL BE MODIFIED
  - ASPHALT TIE-IN LIMITS ON APPROACHES TO BE DETERMINED IN FIELD BY CONTRACT ADMINISTRATOR
  - CURB REPLACEMENT AS DIRECTED BY CONTRACT ADMINISTRATOR
  - PAVEMENT REPAIRS SHOWN ARE A REPRESENTATIVE SAMPLE OF TENDERED QUANTITIES
  - INSTALL DETECTABLE WARNING TILES AS DIRECTED BY CONTRACT ADMINISTRATOR (CW 3326)
  - ADJUST WATER SERVICE SHUT-OFF VALVES TO GRADE IF REQUIRED
  - NO VIBRATORY HEAVY EQUIPMENT OR MACHINE MOUNTED CONCRETE BREAKERS WITHIN 3.0m OF ASBESTOS-CONCRETE WATER MAINS

**PRELIMINARY**  
NOT TO BE USED FOR  
CONSTRUCTION

**METRIC**  
WHOLE NUMBERS INDICATE MILLIMETERS  
DECIMALIZED NUMBERS INDICATE METERS

EXISTING	LEGEND - PLAN	PROPOSED	EXISTING	LEGEND - PLAN	PROPOSED	EXISTING	LEGEND - PROFILE	PROPOSED
	HYDRANT			LDS/WWS			ELEVATIONS	
	VALVE			WATERMAIN			CONCRETE	
	CURB STOP			GAS			CONCRETE SIDEWALK	
	MANHOLE			TRAFFIC SIGNALS			ASPHALT	
	CATCH BASIN			HYDRO/STREET LIGHT			BRICK	
	CURB INLET / CATCH PIT			MTS/SHAW			LEGEND - PLAN	
	HYDRO POLE			CURB RENEWAL			NORTH GUTTER	
	LIGHT STANDARD			PROPERTY LINE			CENTER LINE	
	TRAFFIC SIGNAL POLE			WOOD FENCE			SOUTH GUTTER	
	SURVEY BAR			CONCRETE FENCE			NORTH SIDEWALK	
	GEODETIC BENCH MARK			RAMP CURB			SOUTH SIDEWALK	

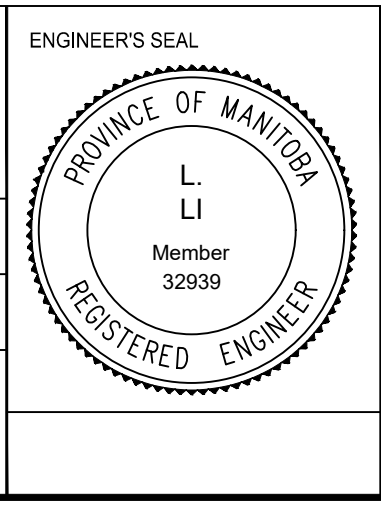
**LOCATION APPROVED UNDERGROUND STRUCTURES**

NO.	REVISIONS	DATE	BY
3.	ISSUE FOR CONSTRUCTION	21/04/01	T.G.
2.	ISSUE FOR TENDER	21/03/24	T.G.
1.	PLAN APPROVAL	21/01/06	T.G.

**NOTE:**  
LOCATION OF UNDERGROUND STRUCTURES AS SHOWN ARE BASED ON THE BEST INFORMATION AVAILABLE. BUT NO GUARANTEE IS GIVEN THAT ALL EXISTING UTILITIES ARE SHOWN OR THAT THE GIVEN LOCATIONS ARE EXACT. CONFIRMATION OF EXISTENCE AND EXACT LOCATION OF ALL SERVICES MUST BE OBTAINED FROM THE INDIVIDUAL UTILITIES BEFORE PROCEEDING WITH CONSTRUCTION.

**ENGINEERING DIVISION  
TECHNOLOGY SERVICES BRANCH  
106 - 1155 PACIFIC AVE**

DESIGNED BY T.G & M.S.	CHECKED BY E.H., M.S., M.L.
DRAWN BY T.G.	APPROVED BY M.L.
HOR. SCALE: 1 : 250	VERTICAL: 1 : 10
DATE: 2021/04/06	



**THE CITY OF WINNIPEG  
PUBLIC WORKS DEPARTMENT**

**ROSS AVE W**  
FROM KEEWATIN ST TO WORTH ST  
ASPHALT OVERLAY AND ASSOCIATED WORKS  
FROM STA. 2+20 TO STA. 3+28

CITY DRAWING NUMBER SE-21-20	SHEET 11 OF 18
<b>11</b>	

BID OPPORTUNITY NO. 1-2021