

**STAINLESS STEEL SPECIFICATIONS:**

STAINLESS STEEL KITCHEN CABINETS/EQUIPMENT  
SUBMIT SHOP DRAWINGS FOR APPROVAL

**PLUMBING:**

**INTEGRAL STAINLESS KITCHEN SINK**

- 16GA S.S. T304#4 MINIMUM - ALL COVERED WELDED INTEGRAL INTO COUNTERTOP - WELDS CLEANED AND POLISHED TO BLEND WITH S.S. TOP.
- SEE SIZES ON DRAWING AND MECHANICAL SPECIFICATIONS.
- 3 1/2" S.S. STRAINER ASSEMBLIES C/W 1 1/2" DRAIN

**FAUCET**

RE-INSTALL EXISTING FAUCET AT KITCHEN SINK.

**STAINLESS COUNTERTOPS C/W BASE CABINET**

- 16GA S.S. T304#4 TOP - 4" BOXED BACK RISER
- COUNTERTOP TO HAVE MARINE EDGE - FRONT & ENDS
- 18GA S.S. BASE AND INTERMEDIATE SHELVES
- INTERMEDIATE SHELVES TO BE ADJUSTABLE WITH STAINLESS PILASTER STRIPS AND CLIPS
- CABINET ENDS AND DIVIDERS TO BE 20GA S.S. T304#4 FINISH
- BACK PANEL - 20GA S.S. T304#4
- REINFORCING 16GA SATINCOAT C-SECTION, DOUBLE - FACE TAPE TO TOP (3 REQ'D)
- 16GA SATINCOAT OR GALVANIZED SUPPORT CHANNELS FOR BASE SHELF
- 1 5/8" OD - 16GA S.S. TUBULAR LEGS
- S.S. ADJ. BULLET FEET
- 16GA S.S. T304#4 REMOVABLE S.S. KICK PLATE - FRONT & ENDS
- 16GA S.S. SKIRTING TO COVER FRONTS OF SINKS

**STAINLESS DRAWERS**

- DOUBLE PAN CONSTRUCTION - FRONT - 18GA S.S. T304#4
- 1" INSULATION BETWEEN PANS
- 16GA S.S. T304#4 DRAWER PAN x 8" DEEP FASTENED TO THE BACK PAN OF THE DRAWER FRONT
- STAINLESS DRAWER SLIDES x 20" LONG - FULL EXTENSION WEIGHT CAPACITY 80-100 lbs
- DRAWER HOUSING - 16GA S.S. T304#4
- FASTEN DRAWERS TO UNDERSIDE OF STAINLESS TOP
- DRAWER HANDLES: INTEGRAL STAINLESS STEEL; ALL CORNERS SMOOTH

**WALL MOUNTED SHELVES - CABINET STYLE**

- 18GA S.S. T304#4 BODY, TOP AND SHELVES
- SHELVES TO BE ADJUSTABLE C/W S.S. PILASTER STRIP AND CLIPS

**NOTES:**

THESE DRAWINGS SHALL NOT BE SCALED.

THE CONTRACTOR SHALL VISIT THE SITE AND SATISFY ONESELF ALL DIMENSIONS, DATUM, AND DETAILED INFORMATION SHOWN ARE CORRECT.

THE CONTRACTOR IS TO REVIEW AND COORDINATE ALL ARCHITECTURAL, MECHANICAL, ELECTRICAL AND STRUCTURAL DRAWINGS FOR ADDITIONAL OPENINGS THROUGH FLOORS, WALLS, AND CEILINGS FOR DUCT, PIPE & ELECTRICAL RISERS AND ALL OPENINGS NOT SHOWN ON DRAWINGS.

ALL OPENINGS THROUGH FIRE ASSEMBLIES ARE TO BE FIRE STOPPED AND SEALED WITH ULC APPROVED FIRE STOPPING TO MAINTAIN THE INTEGRITY OF THE FIRE SEPARATION, AND PROVIDE A SMOKE-TIGHT BARRIER.

ALL PRODUCTS AND MATERIALS TO BE USED AND INSTALLED SHALL CONFORM WITH MANUFACTURER'S SPECIFICATIONS & APPLICABLE CODES.

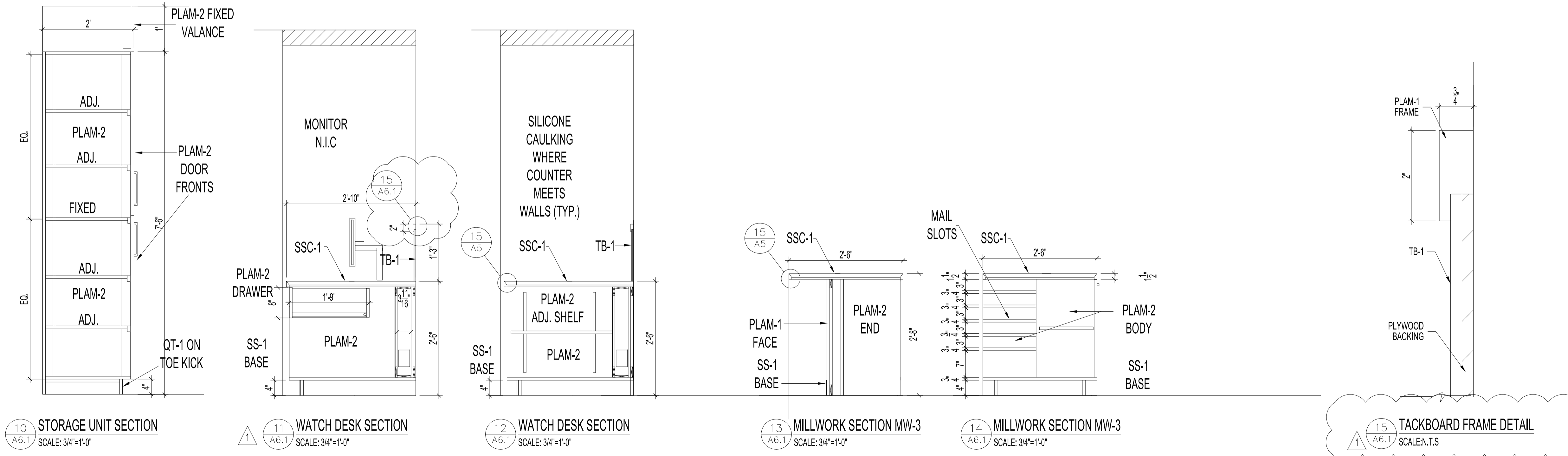
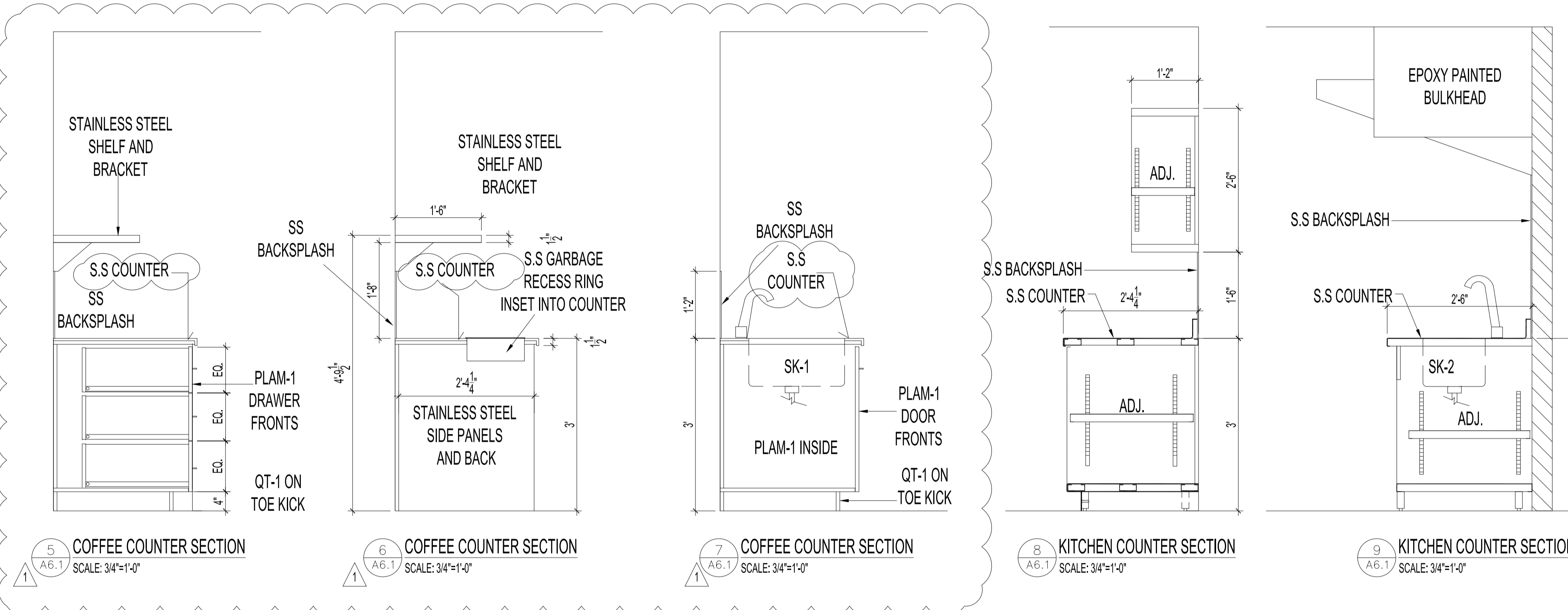
THE CONTRACTOR SHALL BE RESPONSIBLE TO PATCH AND MAKE GOOD ALL EXISTING CONSTRUCTION AFFECTED BY THE REMOVAL OF ALL ITEMS FORMING THE PART OF THE RENOVATION WORK.

WHERE NEW FLOORING AND BASE IS TO BE INSTALLED IN EXISTING AREAS (REFER TO FLOOR PLAN AND ROOM SCHEDULE) THE EXISTING FLOORING SURFACE AND BASE MUST BE REMOVED, UNLESS OTHERWISE NOTED. ALL FLOOR SURFACES SHALL BE PREPARED IN ACCORDANCE TO MANUFACTURER'S RECOMMENDATIONS FOR INSTALLATION OF NEW FLOOR.

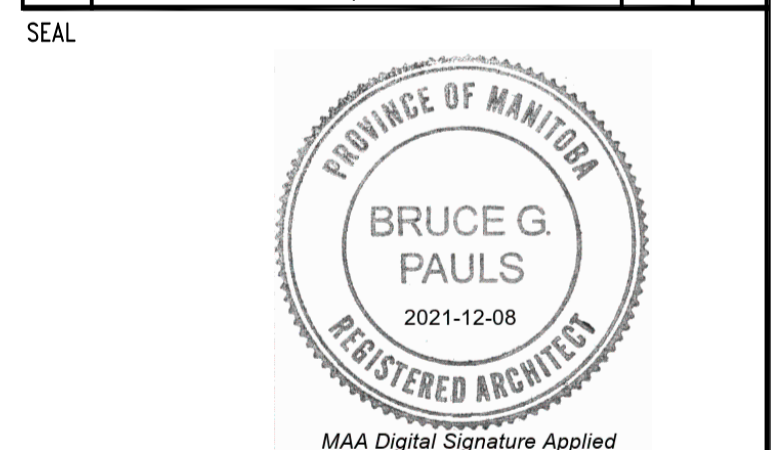
WHERE PAINTING OF EXISTING WALLS IS INDICATED ON THE ROOM SCHEDULE, THESE WALLS MUST BE CLEANED OF ANY EXISTING WALL COVERING, PATCHED & PREPARED TO ACCEPT NEW MATERIAL, UNLESS OTHERWISE NOTED.

**WARNING:**

ASBESTOS MAYBE PRESENT BEHIND WALLS, CEILING SPACE & FLOORS. IF ASBESTOS & ANY HAZARDOUS MATERIAL IS FOUND, STOP WORK IMMEDIATELY & CONTACT CITY OF WINNIPEG, CENTRAL CONTROLS, PH: 204-986-2351.



1	ADDENDUM #3	KJNJKR	DEC. 9 2021
0	ISSUED FOR CONSTRUCTION	KJNJKR	OCT. 28, 2021
No.	REVISION/DESCRIPTION	BY	DATE



DRAWN	KJNJKR	CHECKED	DESIGNED	BGP	APPROVED
DATE	2021.10.13	USER	APPROVAL		

THE CITY OF WINNIPEG  
ASSETS AND PROJECT  
MANAGEMENT DEPARTMENT  
MUNICIPAL ACCOMMODATIONS DIVISION  
3-65 GARRY STREET, R3C 4K4

PROJECT  
WINNIPEG FIRE PARAMEDIC SERVICES  
FIRE STATION #1  
INTERIOR RENOVATIONS  
65 ELLEN ST. TENDER NO. 535-2021