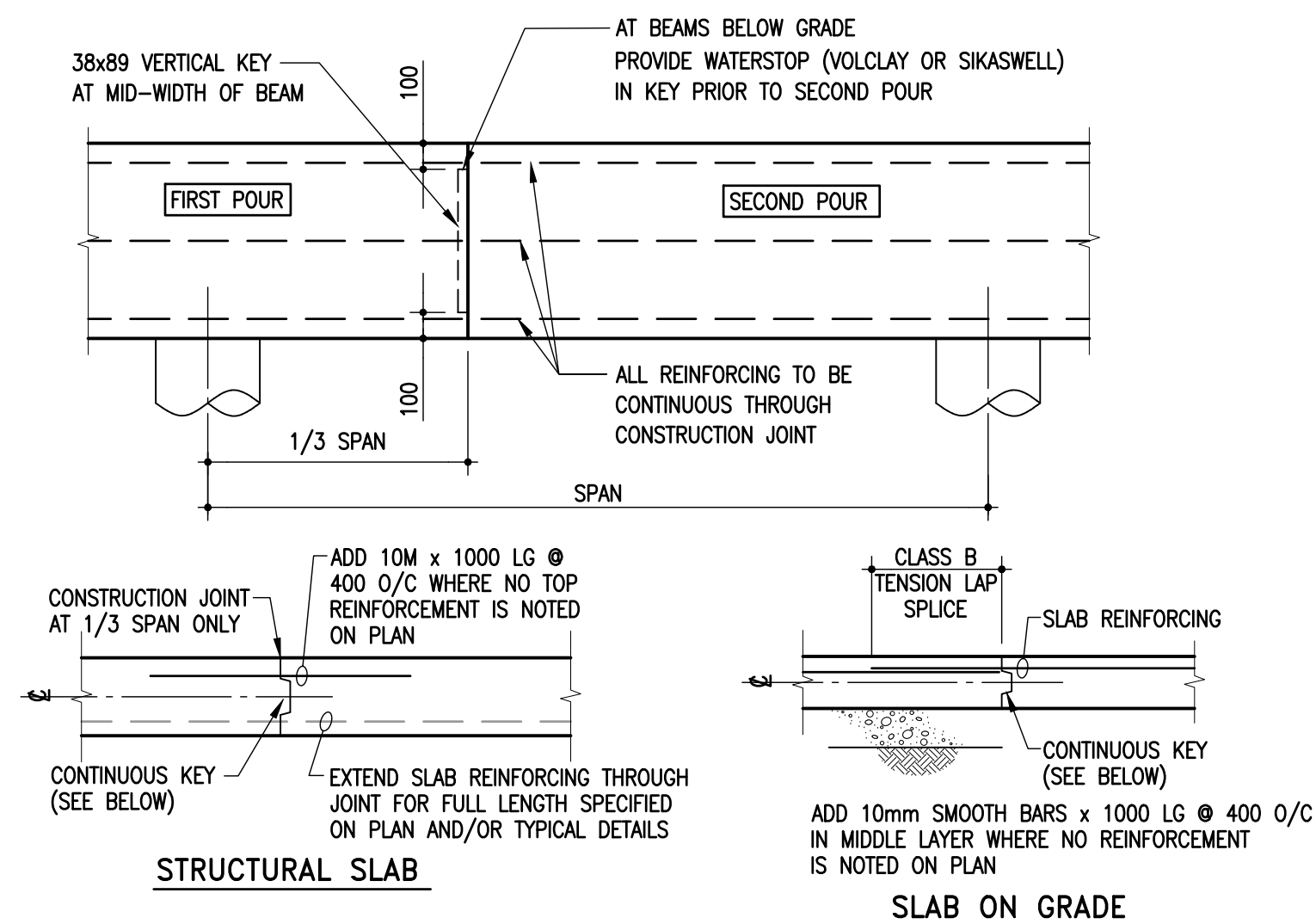


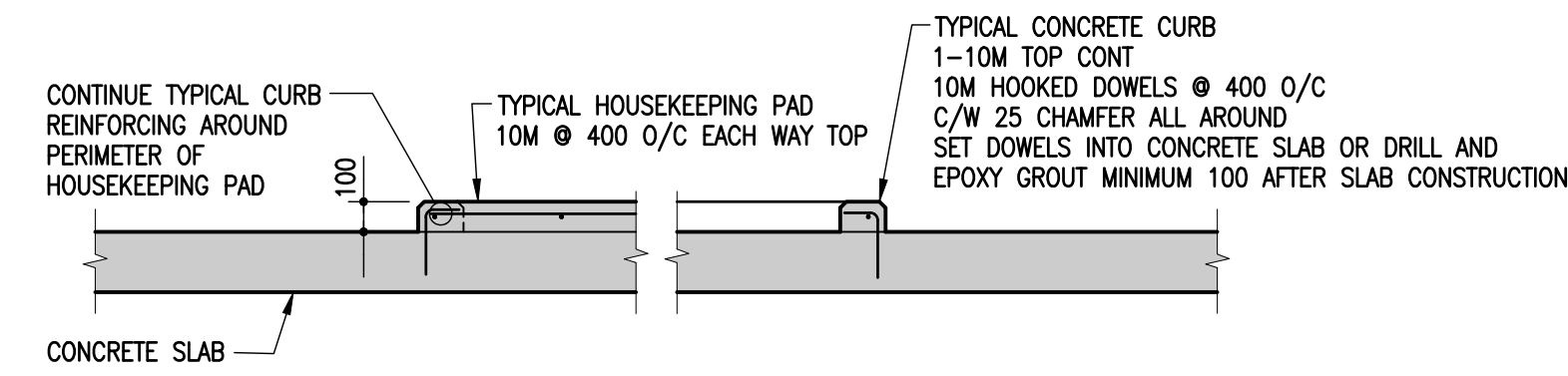
**A** REINFORCING AT OPENINGS IN STRUCTURAL SLABS  
S1.2 | S1.2 1:25

- NOTES:
- UNLESS NOTED OTHERWISE ON THE STRUCTURAL DRAWINGS, REINFORCE AT OPENINGS AS PER DETAILS ABOVE.
  - DO NOT MAKE OPENINGS LARGER THAN THE MAXIMUM DIMENSIONS NOTED ABOVE WITHOUT PRIOR APPROVAL FROM THE CONSULTANT OR UNLESS NOTED ON STRUCTURAL DRAWINGS.
  - RESTRICTIONS ON OPENING SIZE AND LOCATION:
    - ONE-WAY SLABS & TWO-WAY SLABS - MAXIMUM OPENING SIZE IS 750mm SQUARE.
    - FLAT SLABS AND FLAT PLATES:
      - MAKE NO OPENINGS WITHIN TWICE THE SLAB DEPTH FROM THE FACE OF A COLUMN OR EDGE OF A CAPITAL EXCEPT AS NOTED ON THE STRUCTURAL DRAWINGS.
      - MAXIMUM OPENING SIZES:
        - IN AREAS COMMON TO 2 COLUMN STRIPS - NOT GREATER THAN 1/8 OF THE SMALLER OF THE TWO COLUMN STRIP WIDTHS.
        - IN AREAS COMMON TO ONE COLUMN STRIP & ONE MIDDLE STRIP - NOT GREATER THAN 1/4 OF THE SMALLER OF THE TWO STRIP WIDTHS.
        - IN AREAS COMMON TO 2 MIDDLE STRIPS - NOT GREATER THAN 1/2 OF THE SMALLER OF THE TWO MIDDLE STRIP WIDTHS.

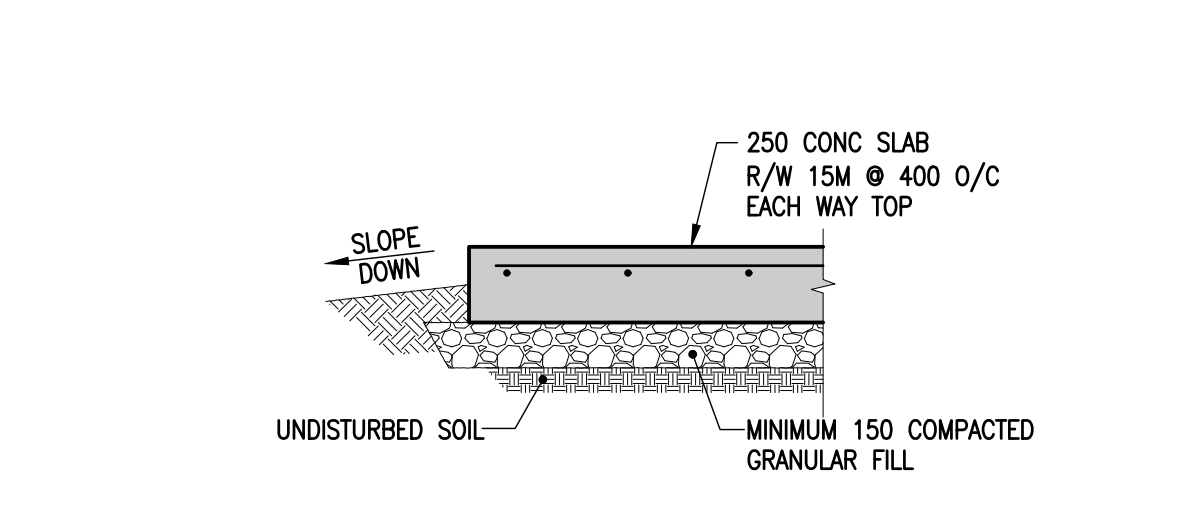


**B** CONSTRUCTION JOINT IN CONCRETE BEAMS & SLABS  
S1.2 | S1.2 1:25

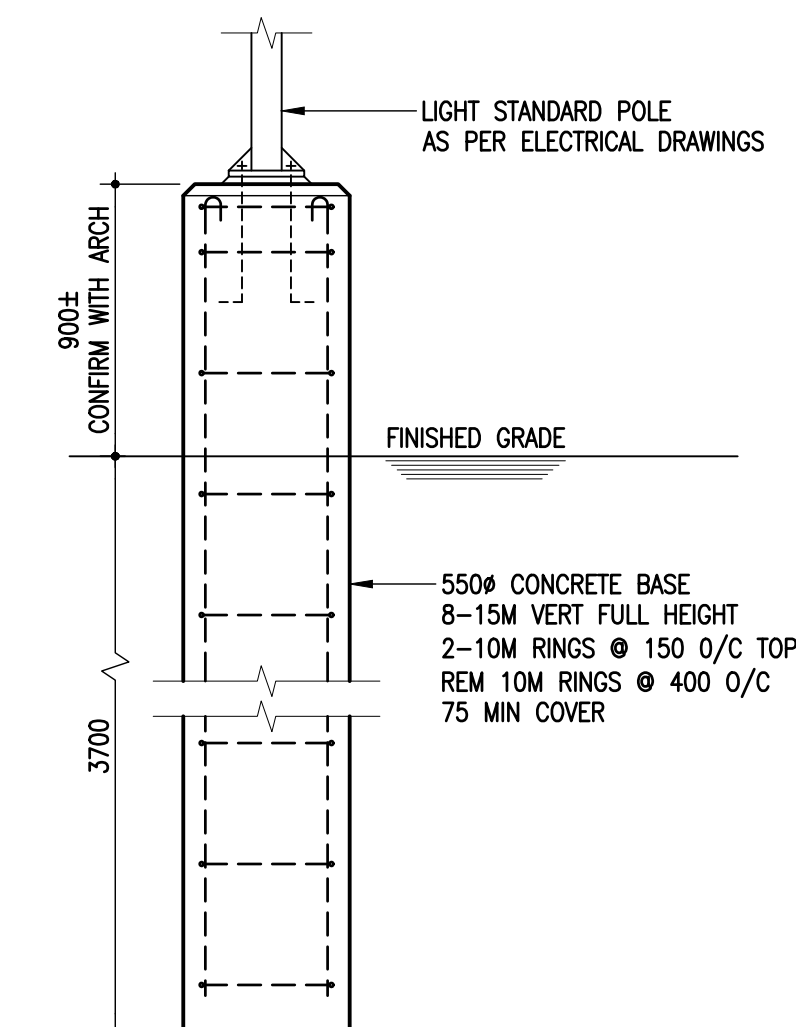
**B** CONSTRUCTION JOINT IN CONCRETE BEAMS & SLABS  
S1.2 | S1.2 1:25



**C** HOUSEKEEPING PAD / CURB DETAIL  
S1.2 | S1.2 1:25

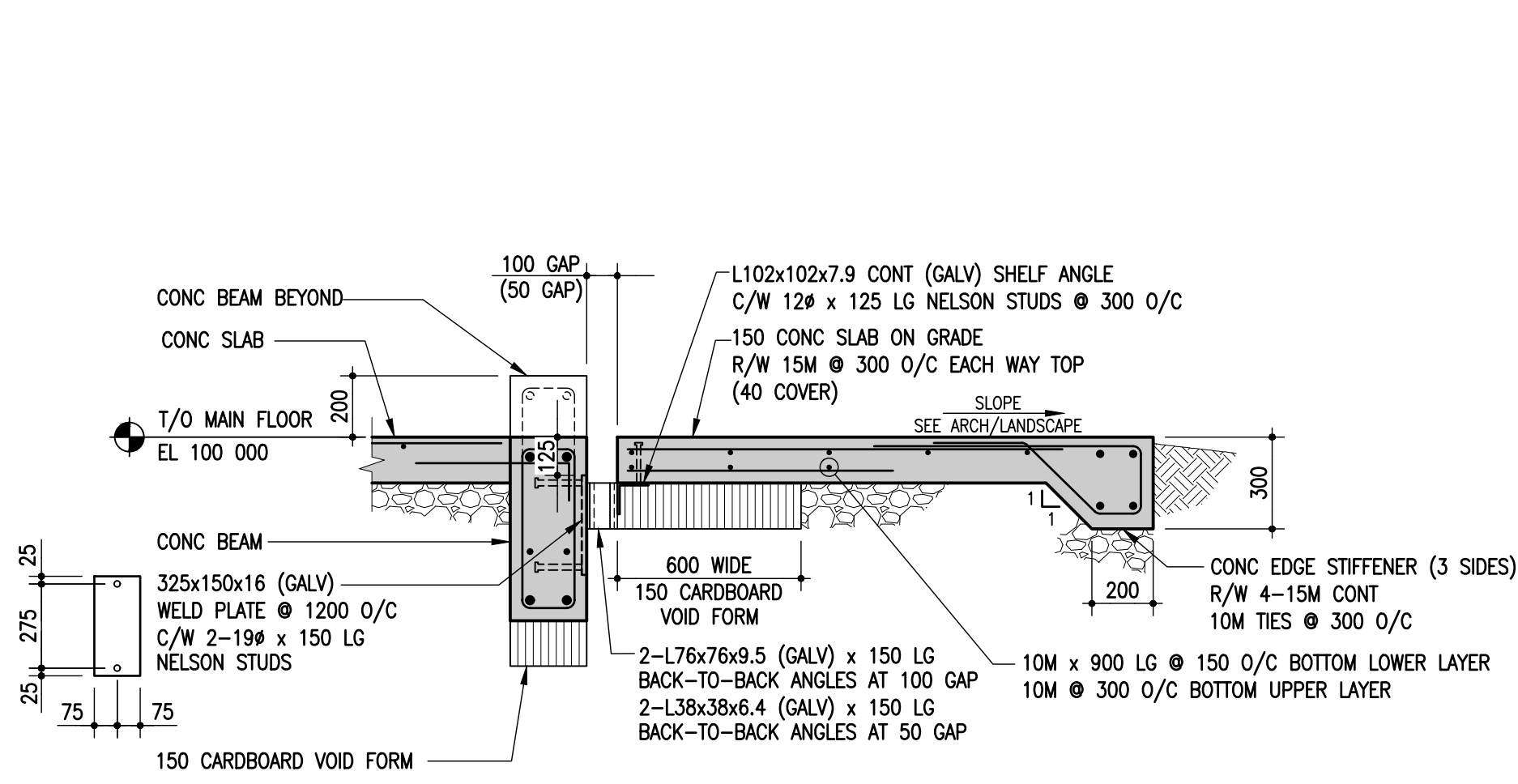


**D** TYPICAL EXTERIOR GRADE SUPPORTED MECHANICAL/ELECTRICAL PAD DETAIL  
S1.2 | S1.2 1:25



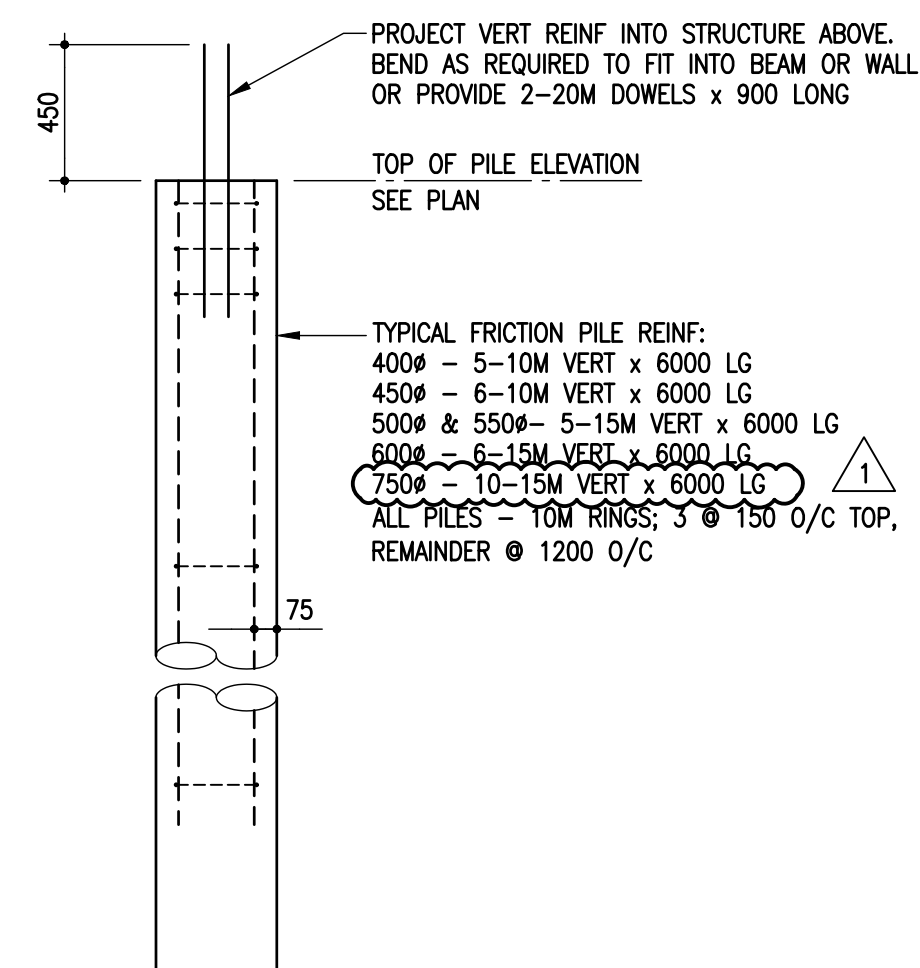
**E** TYPICAL "LAMP STANDARD POLE" CONCRETE BASE DETAIL  
S1.2 | S1.2 1:25

ORIGINAL DRAWING  
SEALED BY  
B. FLISAK  
AND DATED  
2021-10-29

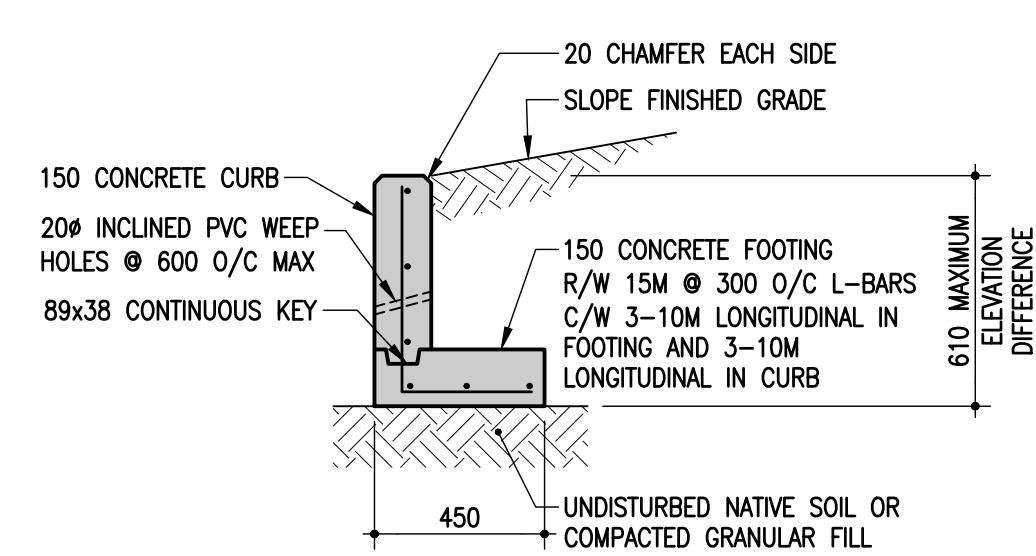


**F** TYPICAL APRON SLAB/SHELF ANGLE DETAIL  
S1.2 | S1.2 1:20

- ALL SHELF ANGLES, PLATES, ETC SHALL BE GALVANIZED.
- TOUCH UP ALL WELDING WITH ZINC RICH PAINT.

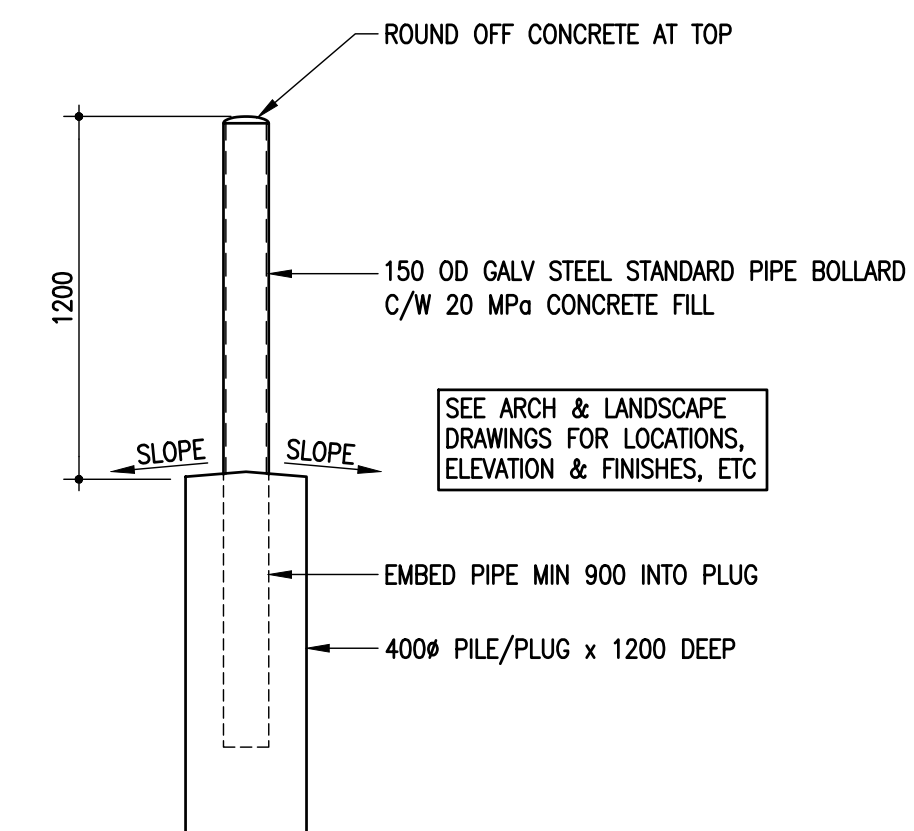


**G** SINGLE PILE DETAIL  
S1.2 | S1.2 1:25



**H** TYPICAL RETAINING WALL DETAIL  
S1.2 | S1.2 1:20

- NOTE: COORDINATE EXACT LOCATIONS AND EXTENTS REQUIRED WITH ARCHITECTURAL/CIVIL DRAWINGS



**J** TYPICAL BOLLARD DETAIL  
S1.2 | S1.2 1:25

- NOTE: COORDINATE EXACT LOCATIONS AND QUANTITIES WITH ARCHITECTURAL DRAWINGS

NO.	DATE	REVISION / ISSUANCE
3	-	-
2	-	-
1	21.12.13	ISSUED FOR ADDENDUM #2
0	21.10.29	ISSUED FOR CONSTRUCTION

Architect

Engineer

300-275 Carlton Street  
Winnipeg, Manitoba R3C 5R6  
T 204. 943. 7501  
F 204. 943. 7507  
2021-0367



**Crosier Kilgour & Partners Ltd.**  
CONSULTING STRUCTURAL ENGINEERS

ST. VITAL PARK  
GARAGE & STAFF HOUSE  
190 RIVER ROAD

Sheet Title

TYPICAL DETAILS

Project No.	Sheet
20105	S1.2
21.12.13	R1

**S1.2**  
R1