

VALVE SIZE	A	B	C	D	E	F		G	T
						CAST.	FAB.		
24	29 1/2	32	19	26 3/8	8	1 3/8	1 1/4	20-1 1/4	4
30	36	38 3/4	22 3/4	29 7/8	12	2 1/8	1 1/2	28-1 1/4	6
36	42 3/4	48	26 1/2	35 7/8	12	2 3/8	1 1/4	32-1 1/2	6
42	49 1/2	53	30 7/8	38	12	2 5/8	1 1/4	36-1 1/2	6
48	56	59 1/2	34 1/8	42	18 1/2	2 3/4	1 3/8	44-1 1/2	7 1/2
54	62 3/4	66 1/4	37 7/8	46 1/4	18	3	1 1/2	44-1 3/4	7 1/2
60	69 1/4	73	41 3/8	50 1/8	18	3 1/8	1 5/8	52-1 3/4	7 1/2
66	76	80	47 1/8	55 1/4	18	3 3/8	1 3/4	52-1 3/4	8
72	82 1/2	86 1/2	48 1/8	60 3/8	18	3 1/2	1 7/8	60-1 3/4	8

ALL DIMENSIONS SHOWN IN INCHES
 FOR BOLTS SMALLER THAN 1 3/4" DIA BOLT HOLES WILL BE 1/8" LARGER THAN DIA OF BOLTS FOR BOLTS 1 3/4" DIA OR LARGER, BOLT HOLES WILL BE 1/4" LARGER THAN DIA OF BOLTS.

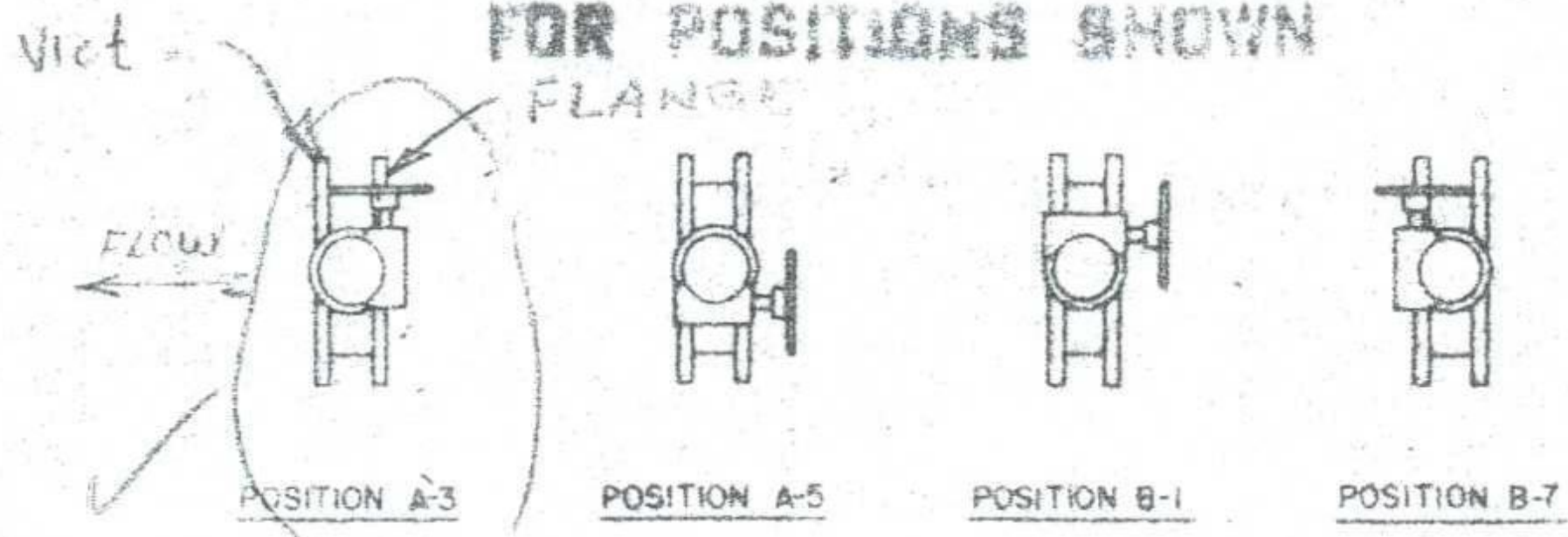
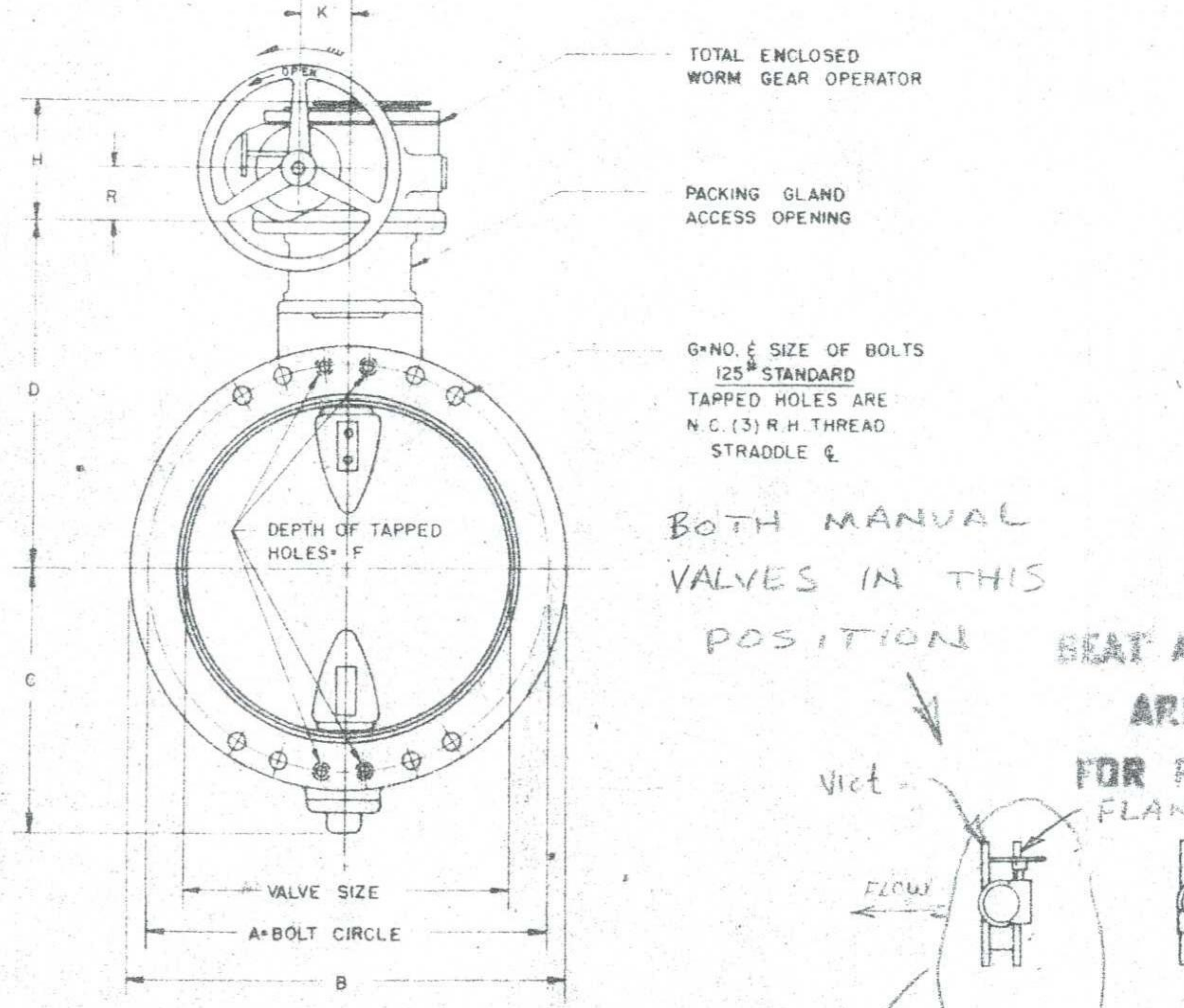
**NOT A.W.W.A. C-504-55T
 PLEASE EXPLAIN**

THE METROPOLITAN CORPORATION OF GREATER WINNIPEG
 WATERWORKS & WASTE DISPOSAL DIVISION

APPROVED FOR CONSTRUCTION
[Signature] DATE **MAY 1 1970**

Approval of this drawing covers only the general design and arrangement of material or equipment and does not in any way relieve the Contractor of any liability or responsibility for the satisfactory operation of this installation.

AS NOTED IN RED



MADE IN CANADA BY
THE KENNEDY COMPANY
 OWEN SOUND, ONTARIO

ISSUED FOR INFORMATION WITH
 BID OPPORTUNITY 35-2006

THE METROPOLITAN OF
 GREATER WINNIPEG
 CUSTOMER P.O.
 B.C.K. ORDER NO 42134
 PROJECT CONTRACT NO 226

PART	MATERIAL
BODY	CI. ASTM A126 CLASS B
DISC	CAST HI-RESIST
SHAFT	304 STAINLESS
SEAT	4 YEAR RUBBER
BEARINGS	SINT BRO. SHIMONOLUB
SEGMENTS	2% NICKEL IRON
GENERAL ARRANGEMENT MANUALLY OPERATED MODEL R-1A RUBBER SEAT BUTTERFLY VALVE	
DATE: 2-16-61	HENRY PRATT CO.
SCALE: NONE	MACHINE & STEEL CONSTRUCTION
DRAWN BY: D. HETZEL	CHICAGO
CHECKED BY: J.P. [Signature]	CHICAGO
APPROVED BY: [Signature]	CHICAGO
① V-10 WAS LEFT OUT OF GEAR ATTACHMENT	CHICAGO
②	CHICAGO
③	CHICAGO
④	CHICAGO
⑤	CHICAGO
⑥	CHICAGO
⑦	CHICAGO
⑧	CHICAGO
⑨	CHICAGO
⑩	CHICAGO