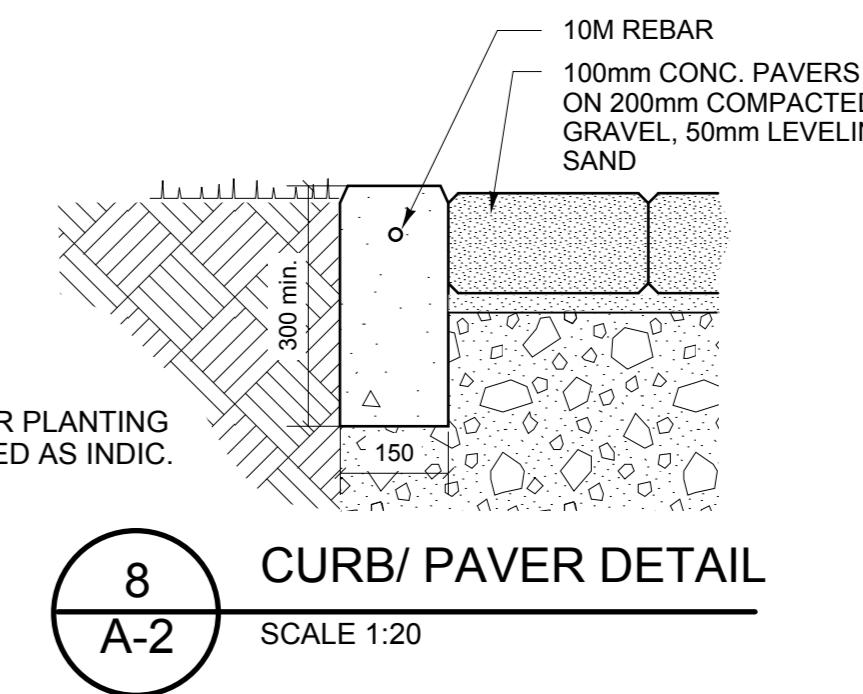
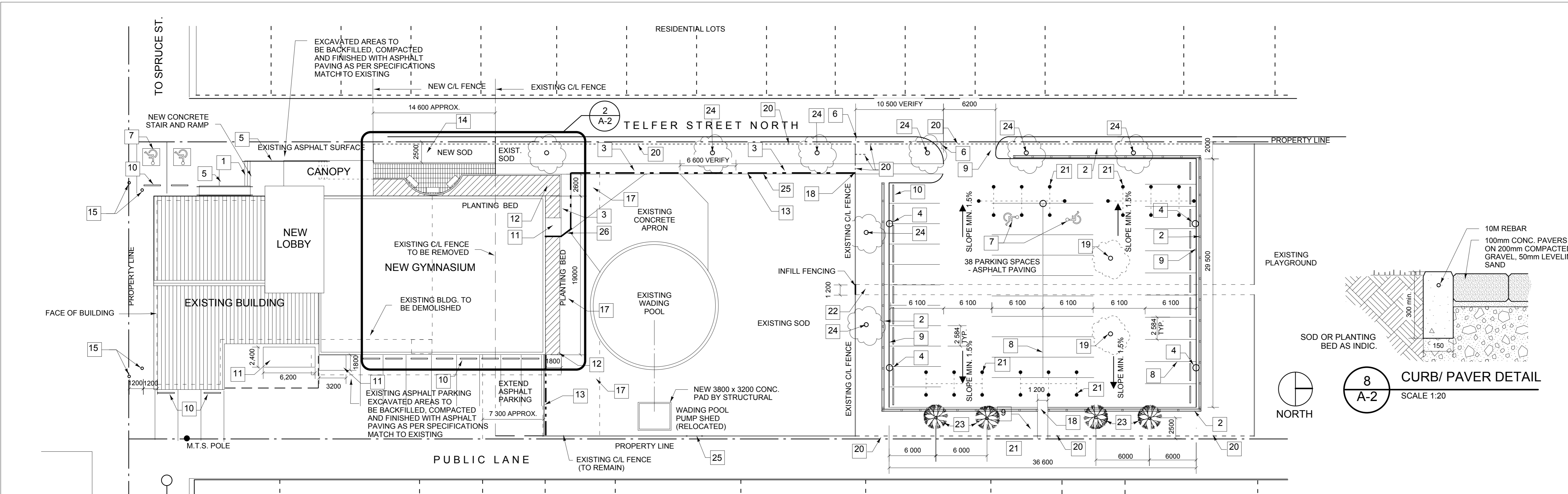
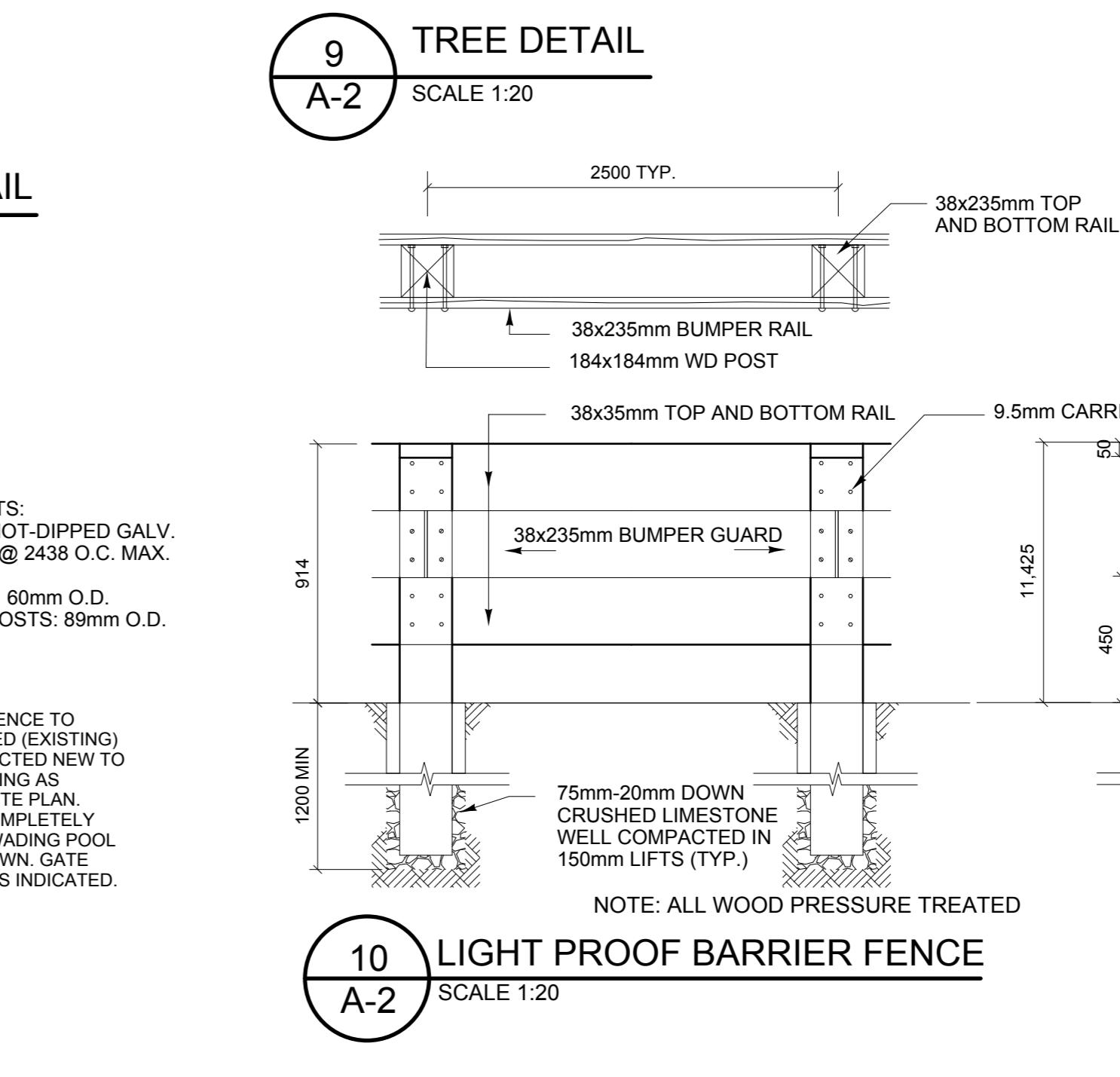
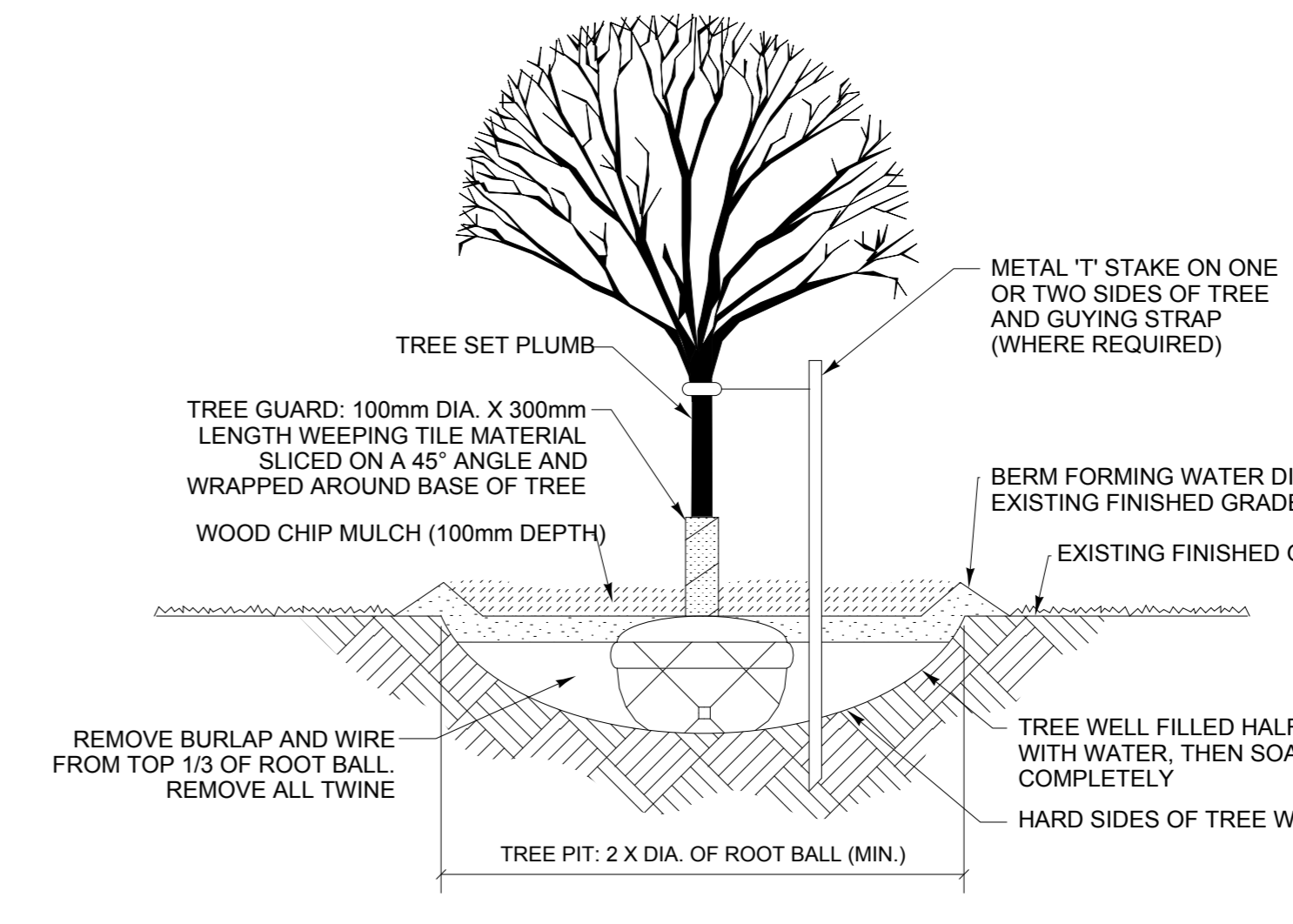
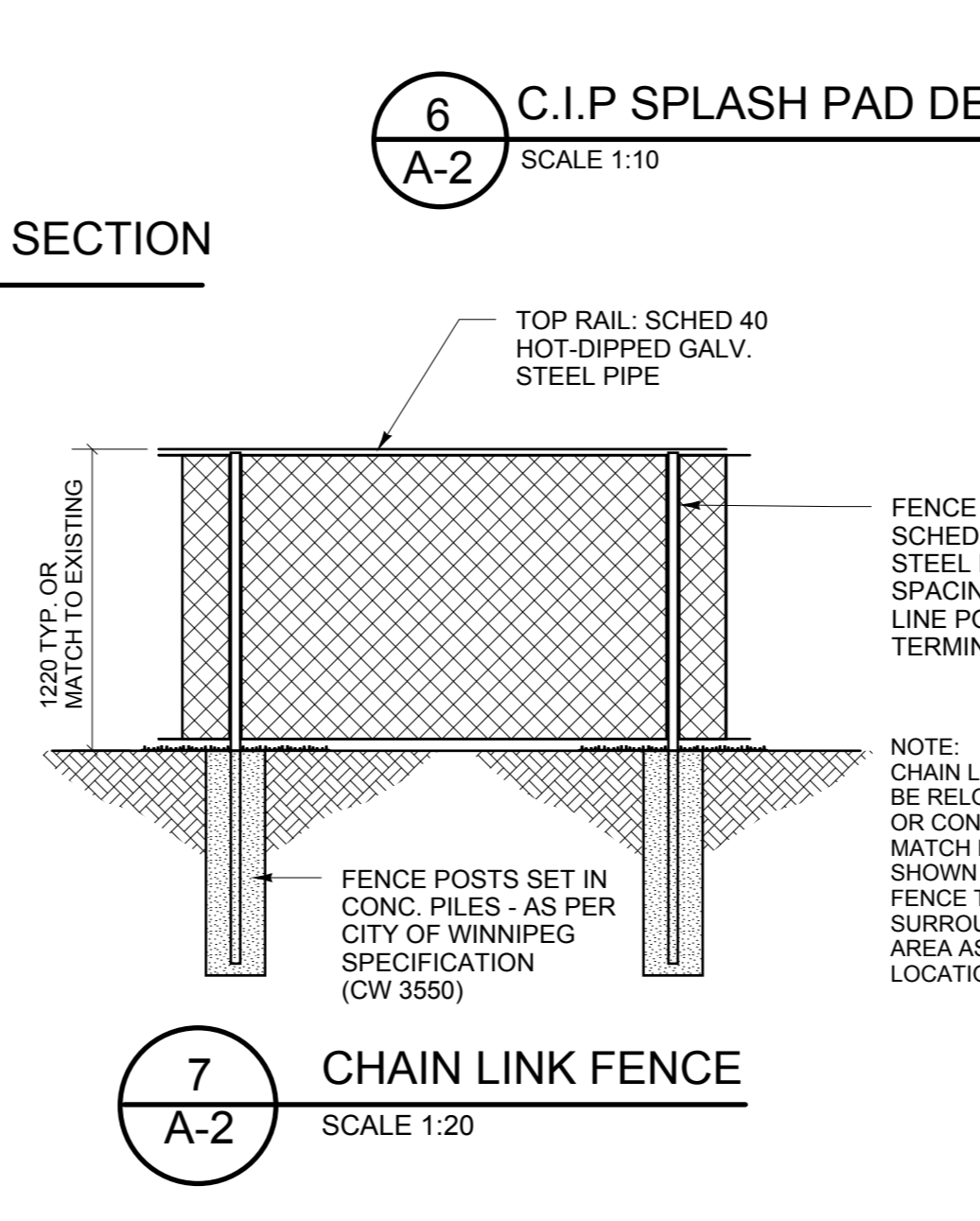
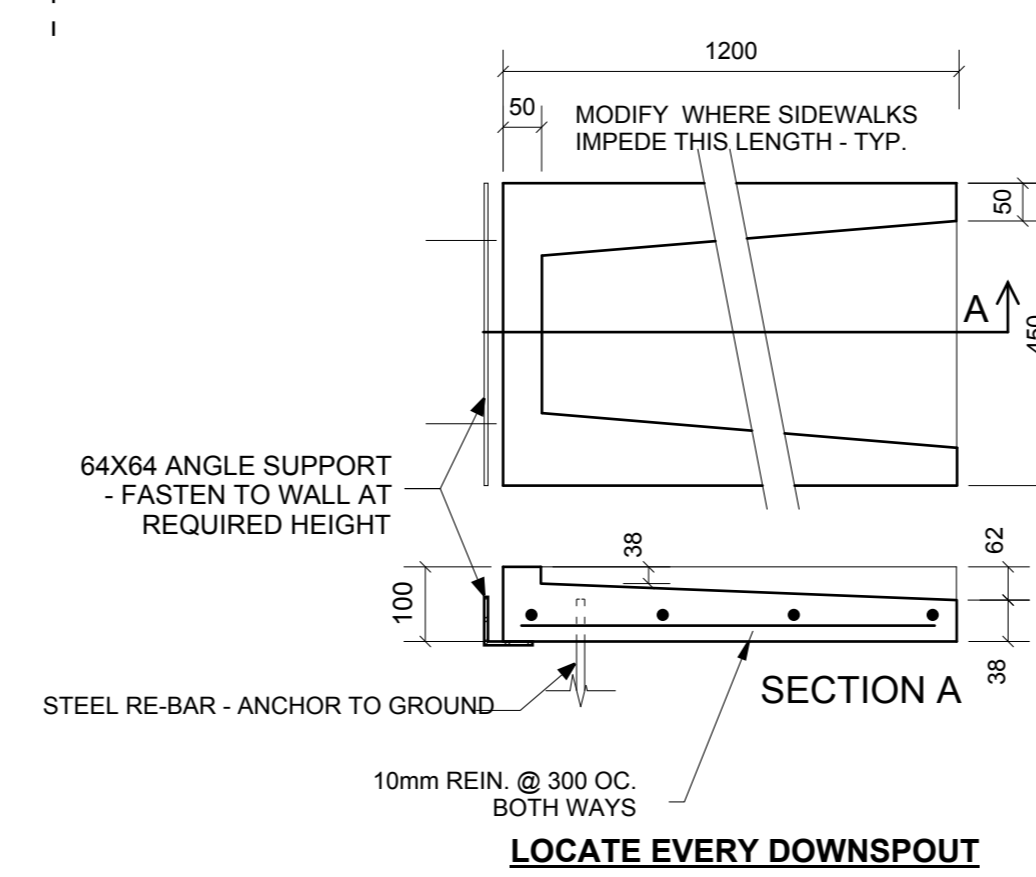
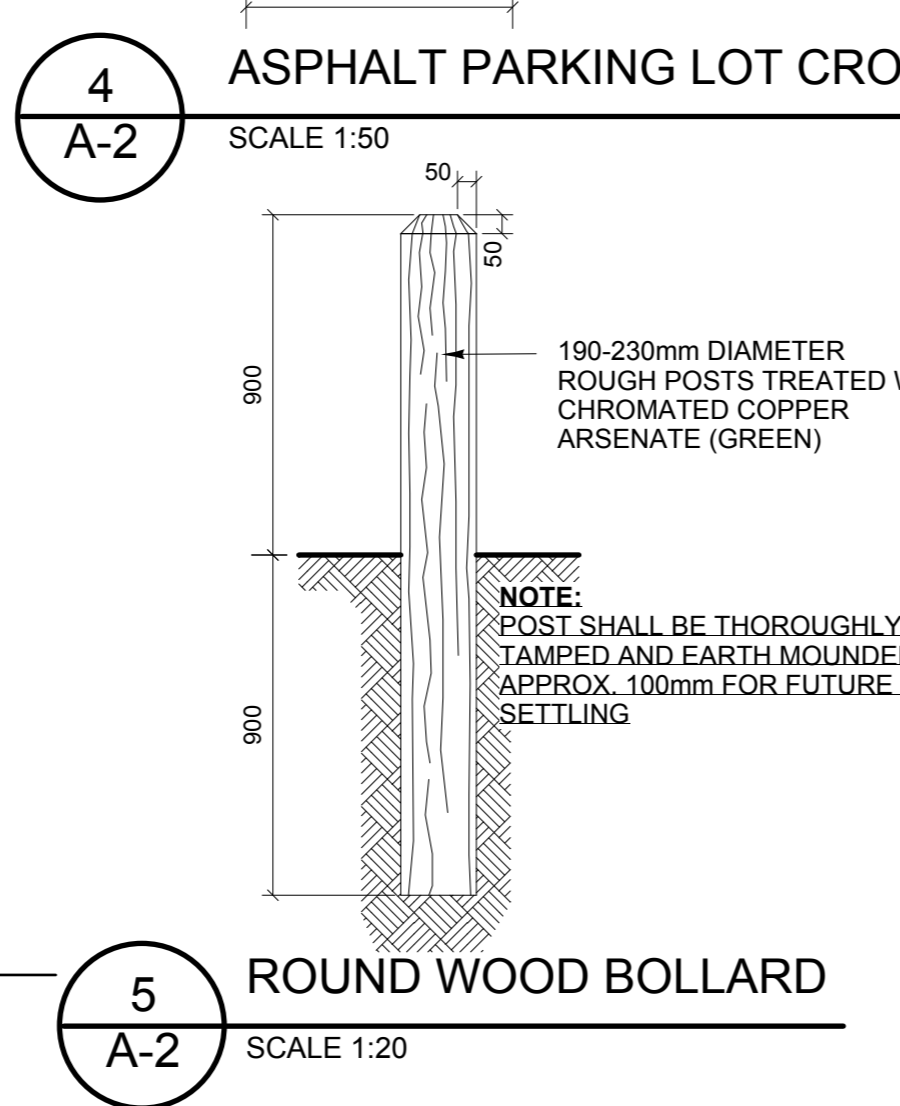
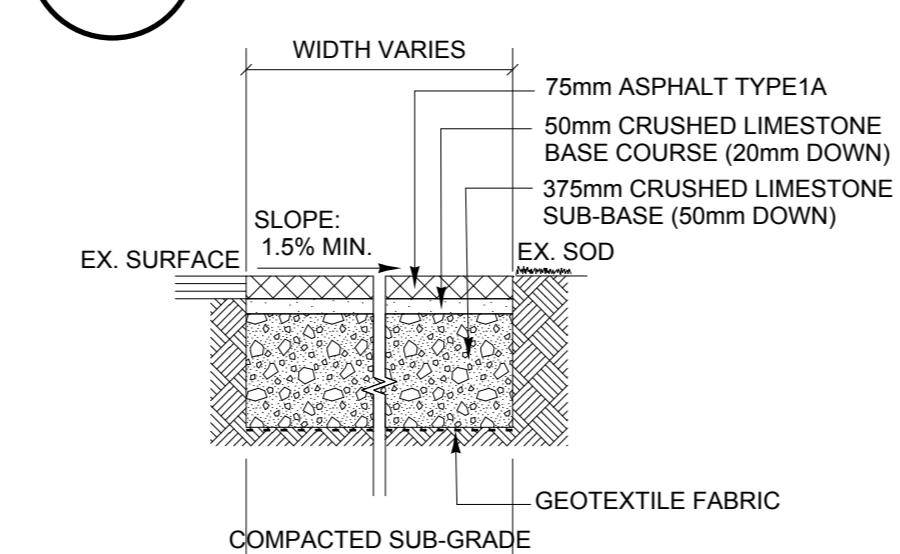
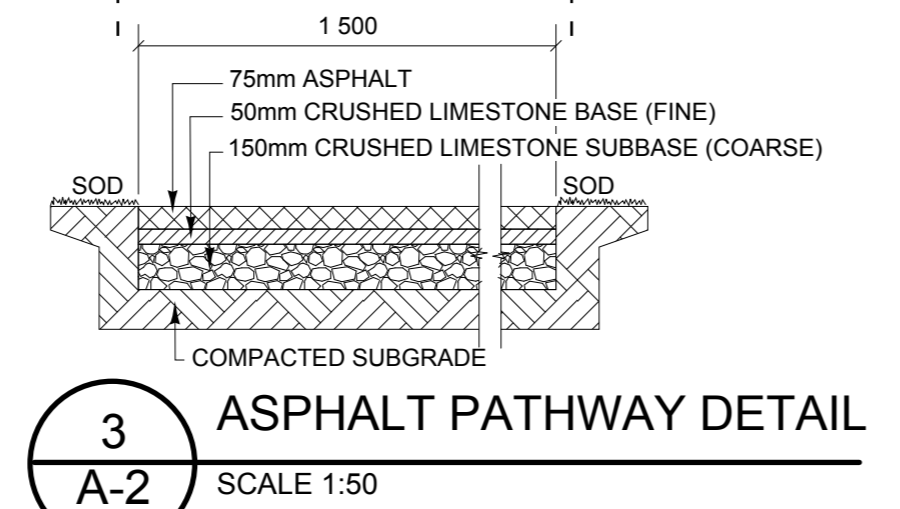
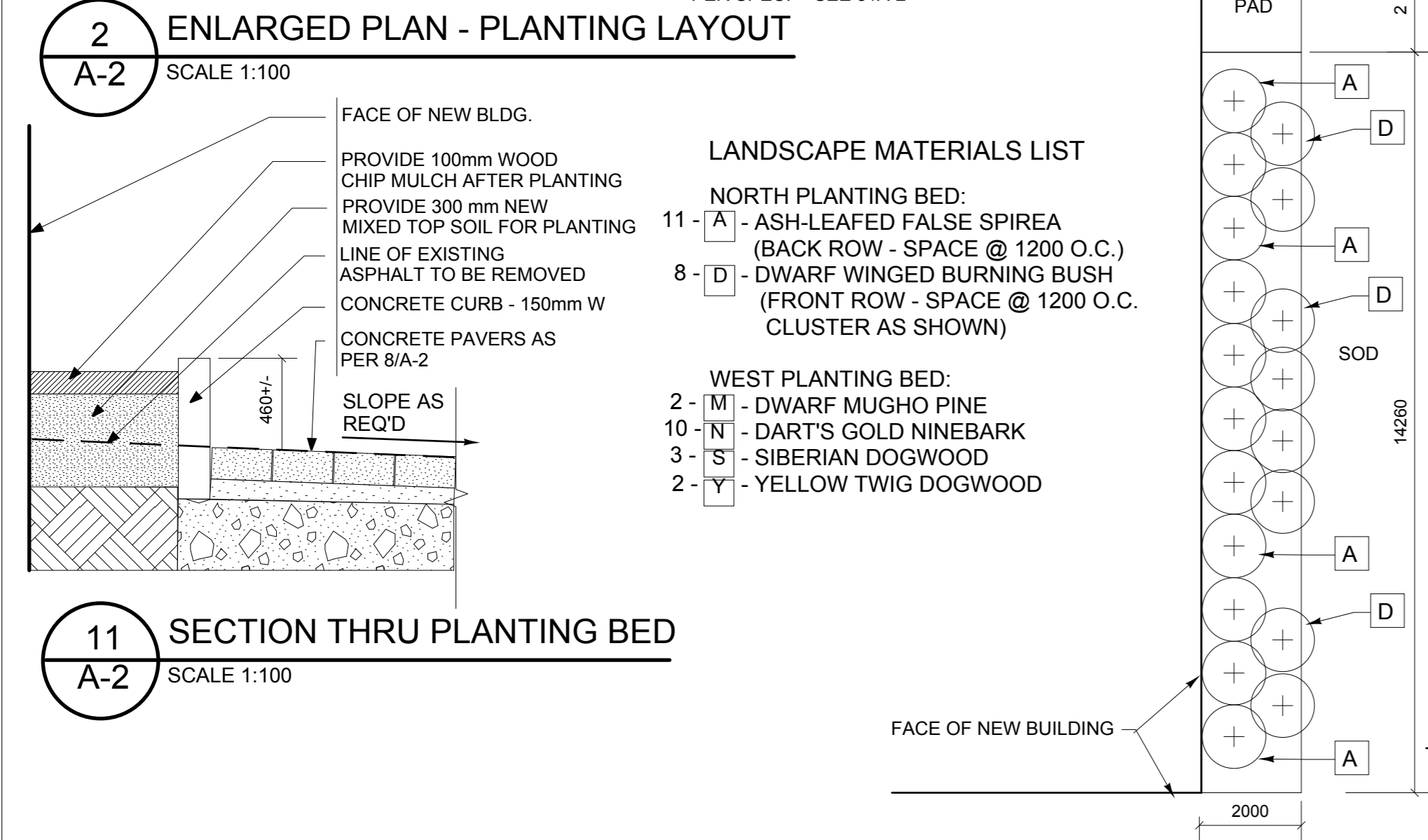
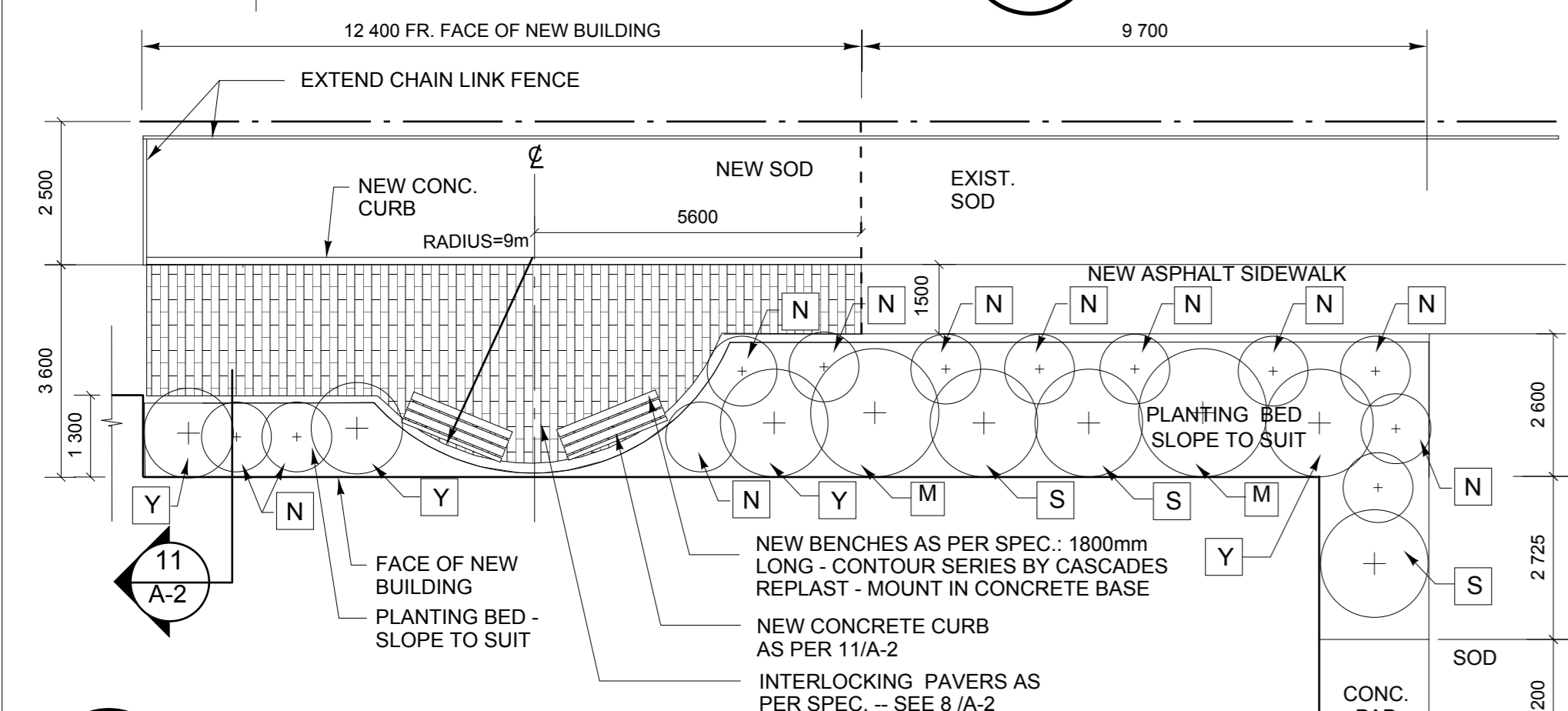
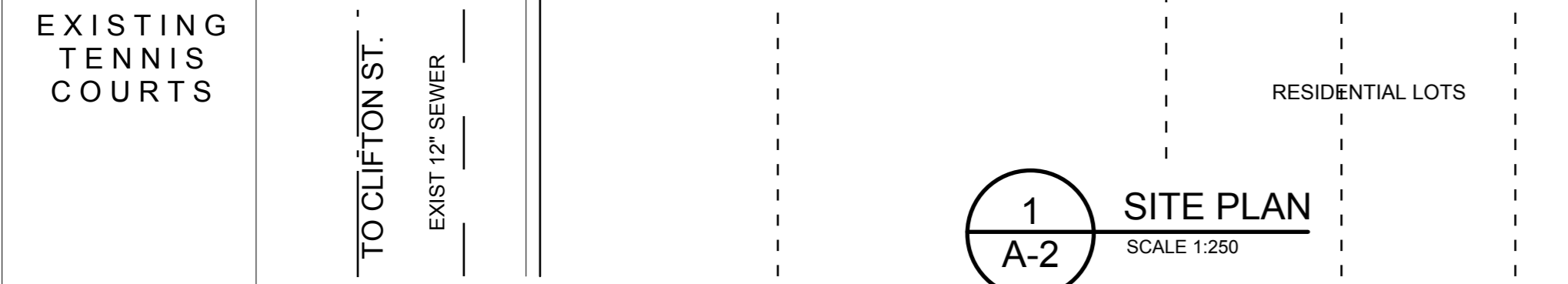


SITE PLAN NOTES

- 1 PATCH/REPAIR ASPHALT ALL AROUND CONCRETE STAIRS
- 2 LIGHT-PROOF PARKING LOT FENCE : SEE 10/A-2
- 3 NEW 1.2m WIDE X 40m LONG (APPROX.) ASPHALT SIDE WALK - SEE 3/A-2
- 4 CONC. PILE 760 HIGH TYP. FOR LIGHT STANDARD - SEE ELEC. NEW RAMP RAILING 38 DIA. STL. PIPE & PIPE STANDERS, PAINT FINISH. SEE DETAILS: 5/A-4
- 5 SITE APPROACH TO CITY OF WINNIPEG SPECIFICATIONS
- 6 NEW ACCESSIBLE PARKING SIGNAGE
- 7 PAINT NEW PARKING STALL LINES THROUGH OUT
- 8 NO CURB: FLUSH CONDITION WHERE SOD TO MEET ASPHALT
- 9 PRECAST CONC. PARKING CURBS: 150mm x 1800mm LONG PINNED AND WEDGED - TYPICAL AT EACH PARKING STALL.
- 10 NEW STRUCTURAL CONCRETE PAD - SIZE AS INDICATED
- 11 REMOVE EXISTING ASPHALT/SOD AND PROVIDE NEW PLANTING BED - 600 DEEP
- 12 NEW CHAIN LINK FENCE 1220 HIGH AS PER DETAIL 7/A-2
- 13 INTERLOCKING PAVERS AS PER SPEC.
- 14 NEW WOOD BOLLARDS - SEE 5/A-2
- 15 EXISTING APPROACH TO REMAIN
- 16 SOD - NEW AND INFILL - AFTER CONSTRUCTION, REPAIR SOD AS REQUIRED AND SLOPE AWAY FROM BUILDING TYP. - NEW SOD REQUIRED BETWEEN BUILDING AND EXISTING SOD AFTER CONSTRUCTION IS COMPLETE - MAKE GOOD TO EXISTING CONDITIONS
- 17 PROVIDE 1200mm BREAK IN FENCE AS SHOWN - EXTEND ASPHALT PAVING (1200 WIDTH) TO MEET LANE EXISTING TREE TO BE REMOVED
- 18 PORTIONS OF CHAIN LINK FENCE TO BE REMOVED AS INDICATED BY DASHED LINES.
- 19 FOOTPRINT OF EXISTING SWING SETS - TO BE DISMANTLED AND REMOVED
- 20 PATHWAY OF INTERLOCKING PAVERS - TO BE REMOVED
- 21 NEW TREES TO BE PLANTED: FALL GOLD ASH 50mm CALIPER MINIMUM - SEE DETAIL 9/A-2
- 22 EXISTING TREE TO REMAIN
- 23 DOUBLE GATE IN CHAIN LINK FENCE THIS LOC'N - 1800 WIDE
- 24 GATE IN CHAIN LINK FENCE THIS LOC'N - 1200 WIDE: PROVIDE STEEL PIN AND SLEEVES IN CONCRETE TO SET GATE OPEN AT 45 AND 90 DEGREES
- 25 NEW CHAIN LINK FENCE THIS LOC'N - 2400 HIGH: PROVIDE SINGLE GATE 1200 WIDE



NOTE: CONTRACTOR IS TO ENSURE THAT TREES, FENCES, WALKS AND ALL COMMUNITY CENTRE PROPERTY ARE PROTECTED FROM DAMAGE DURING CONSTRUCTION.



revisions
This drawing must not be scaled.
The general Contractor must verify all dimensions, datums and levels prior to commencement of work. All errors and omissions must be reported immediately to the Architect.
Variations and modifications to work shown on this drawing shall not be carried out without written permission from the Architect.
This drawing is the exclusive property of the Architect and cannot be reproduced without written permission of the Architect. Reproduction must bear the name of the Architect. Copyright © 2007. seals



engineers

architect
HAROLD FUNK ARCHITECT
401-55 Donald Street Winnipeg MB R3C 1L8
Tel. (204) 943-5087 Fax (204) 949-9231

project
VALOUR COMMUNITY CENTRE GYMNASIUM ADDITION AND RENOVATIONS

715 TELFER ST. N. BID OPPORTUNITY NO. 286-2007

sheet title
SITE PLAN

project no. 06 1288 sheet no.
scale AS SHOWN
drawn by B.P.
approved by H.F.
date 14 November 2007

A-2