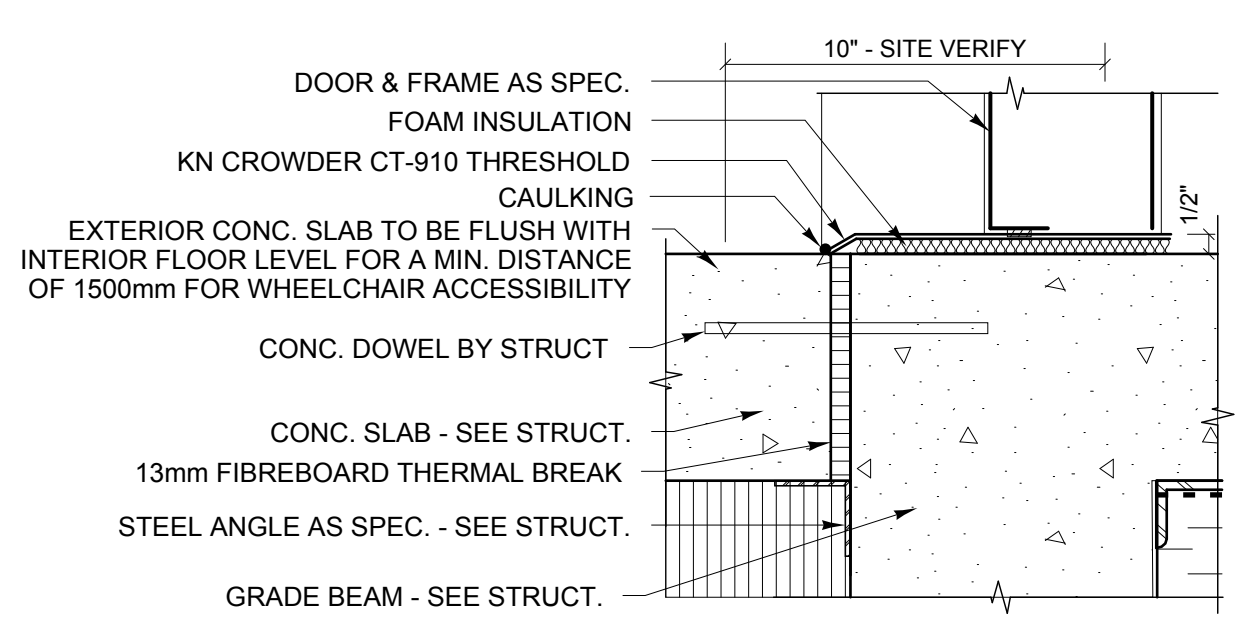
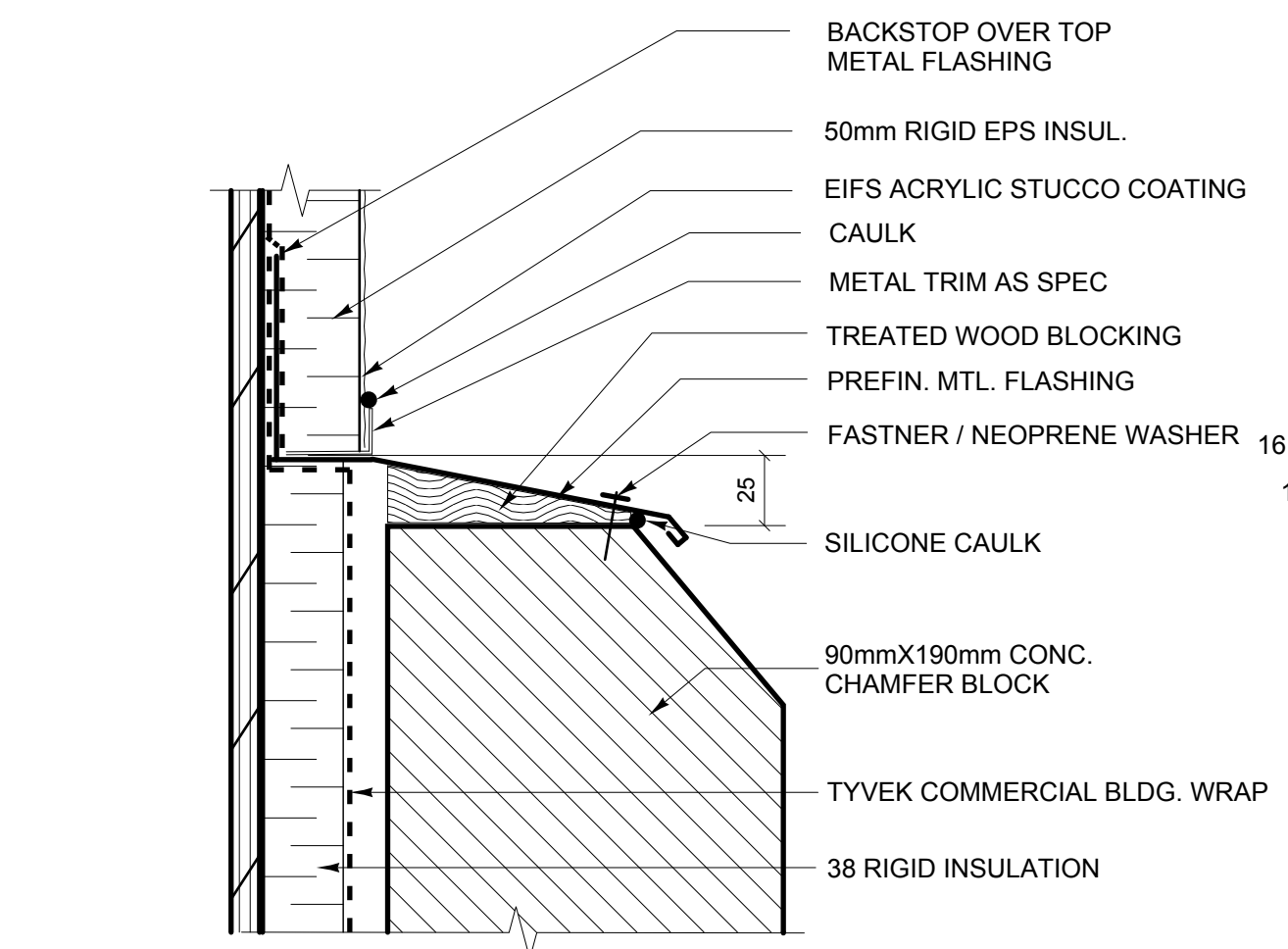


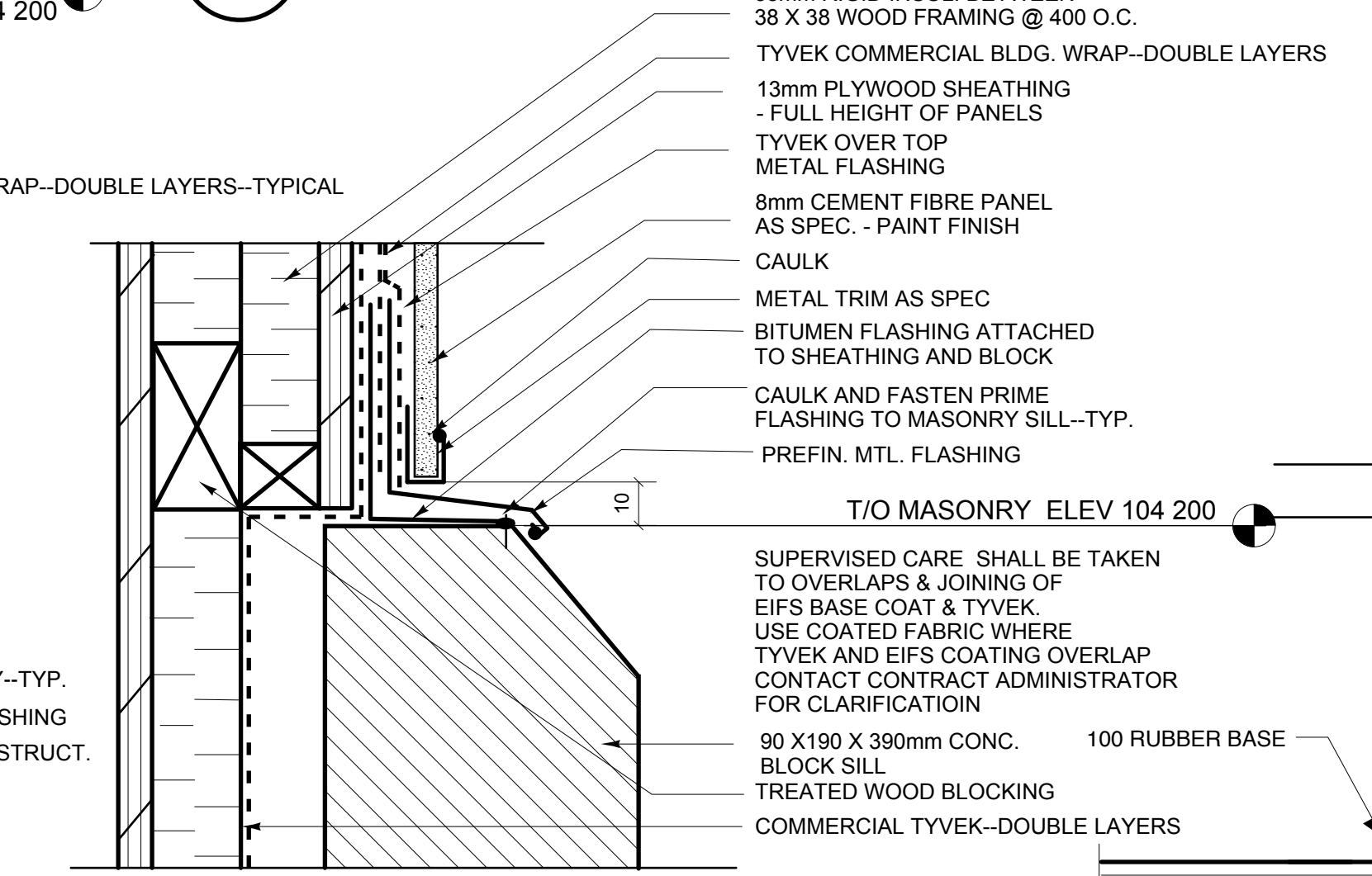
**1** EXTERIOR WALL SECTION @ GYMNASIUM  
A-7 SCALE 1:10



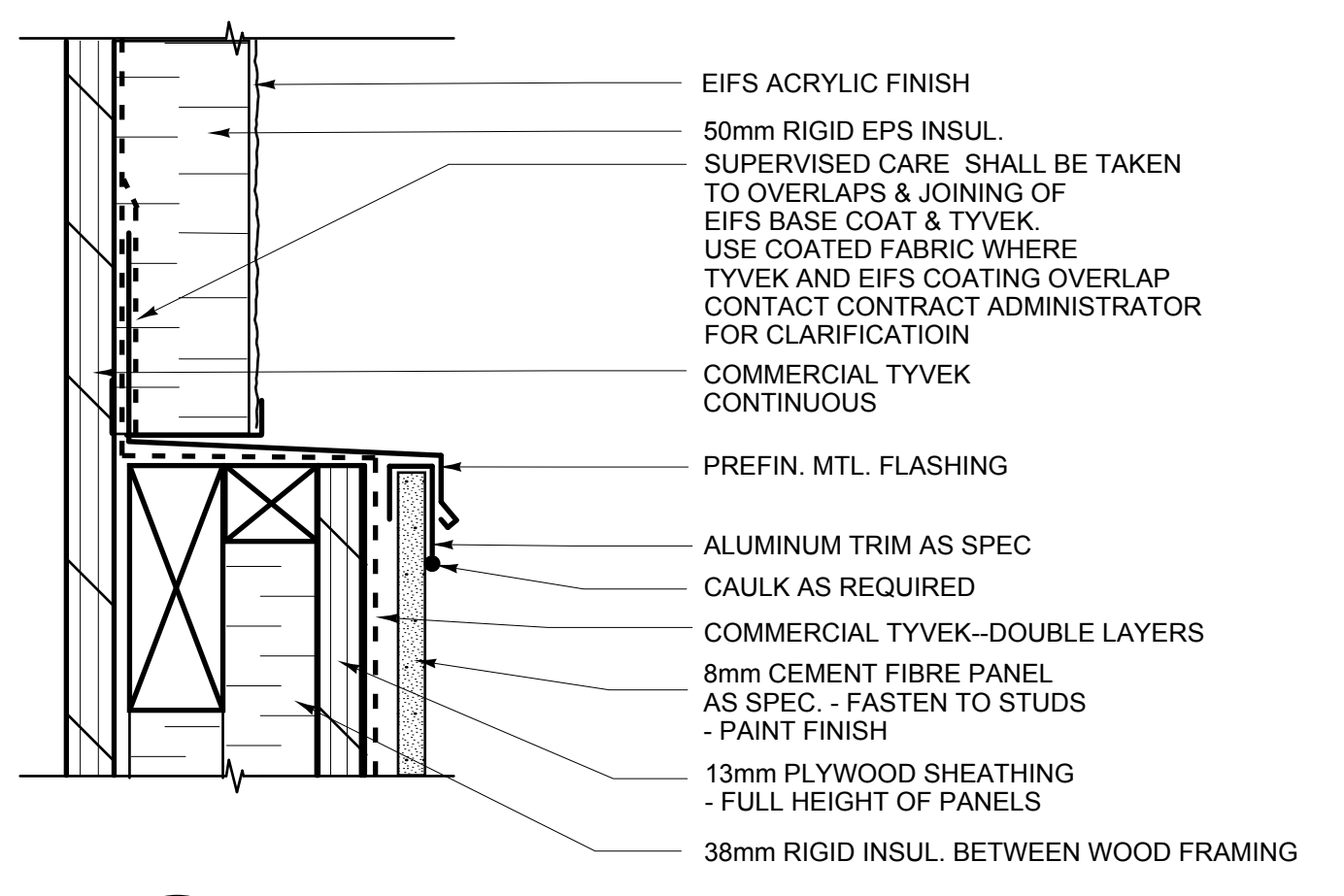
**2** DOOR SILL DETAIL @ ENTRANCE  
A-7 SCALE 1:5



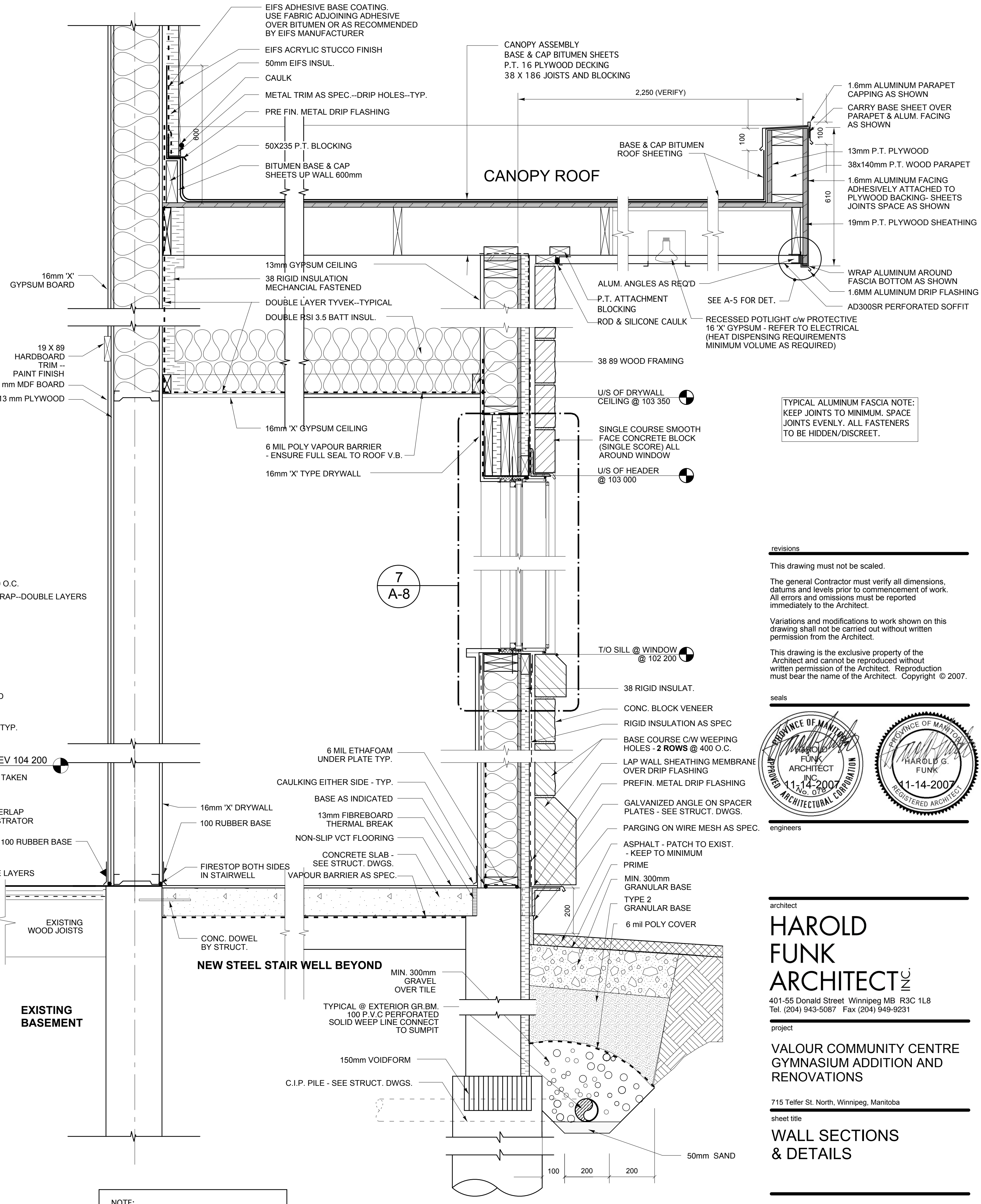
**3** EIFS/MASONRY DETAIL TYP.  
A-7 SCALE N/A



**4** PANEL/MASONRY DETAIL TYP.  
A-7 SCALE 1:2



**5** EIFS/ CONCRETE PANEL DETAIL TYP.  
A-7 SCALE 1:2



**6** WALL SECTION  
A-7 SCALE 1:10

NOTE:  
50 MM RIGID INSULATION-EIFS  
38 MM RIGID INSULATION - MASONRY  
38 MM RIGID INSULATION - CEMENT BOARD

TYPICAL ALUMINUM FASCIA NOTE:  
KEEP JOINTS TO MINIMUM. SPACE JOINTS EVENLY. ALL FASTENERS TO BE HIDDEN/DISCREET.

revisions  
This drawing must not be scaled.  
The general Contractor must verify all dimensions, datums and levels prior to commencement of work. All errors and omissions must be reported immediately to the Architect.  
Variations and modifications to work shown on this drawing shall not be carried out without written permission from the Architect. Reproduction must bear the name of the Architect. Copyright © 2007.  
This drawing is the exclusive property of the Architect and cannot be reproduced without written permission of the Architect. Reproduction must bear the name of the Architect. Copyright © 2007.



architect  
**HAROLD FUNK ARCHITECT INC.**  
401-55 Donald Street Winnipeg MB R3C 1L8  
Tel. (204) 943-5087 Fax (204) 949-9231

project  
**VALOUR COMMUNITY CENTRE GYMNASIUM ADDITION AND RENOVATIONS**

715 Telfer St. North, Winnipeg, Manitoba

sheet title  
**WALL SECTIONS & DETAILS**

project no. 06 1288 sheet no.  
scale AS SHOWN  
drawn by B.P.  
approved by H.F.  
date 14 November 2007

**A-7**