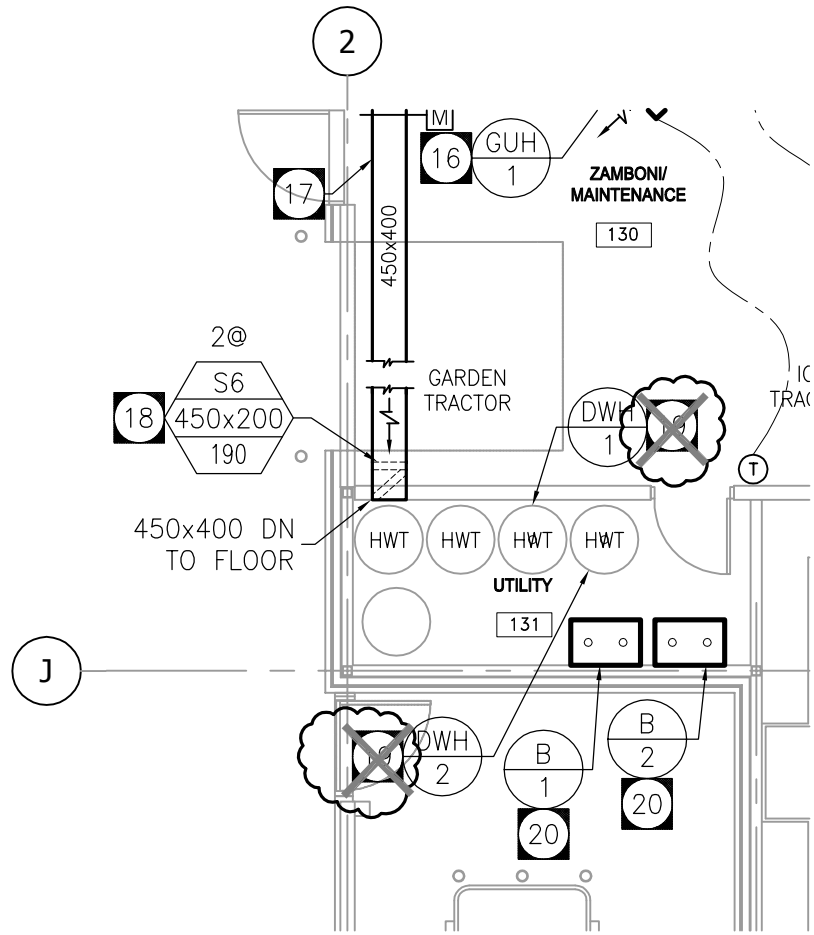


REFER TO DWGS MA-01 AND MA-02 FOR  
SEPARATE SYSTEM REQUIREMENTS

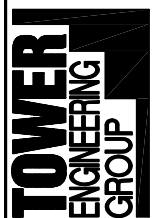


**DWG M-3.1 PART PLAN - SEPARATE SYSTEM  
IN LIEU OF SCHEDULE "I" DOMESTIC WATER  
HEATERS DWH-1,2,3, AND 4**

SCALE: 1: 100

**DRAWING NOTES:**

- 19** ~~GAS FIRED DOMESTIC HOT WATER HEATER, WITH SEPARATE FLUE GAS AND COMBUSTION AIR CONNECTIONS, INSTALLED ON 200mm (4") CONCRETE HOUSEKEEPING PAD. PROVIDE COMPLETE WITH THRU THE ROOF CONCENTRIC FLUE GAS/COMBUSTION AIR ADAPTER. SIZE AND INSTALL FLUE GAS AND COMBUSTION AIR PIPING ACCORDING TO THE REQUIREMENTS OF THE MANUFACTURER AND THE AUTHORITIES HAVING JURISDICTION.~~



208-897 CORYDON AVE.  
WINNIPEG, MB.  
TEL: (204) 925-1150  
FAX: (204) 925-1155

PROJECT TITLE:

**BRONX PARK COMMUNITY CENTRE  
WINNIPEG, MANITOBA**

DRAWING TITLE:

**SEPARATE PRICE ITEM 10  
M-3.1 PART PLAN-SEPARATE SYSTEM**

FILE: 6150-MS-03

DATE: FEB. 14, 2008

DRAWING NO. / REVISION NO.

**MS-03**