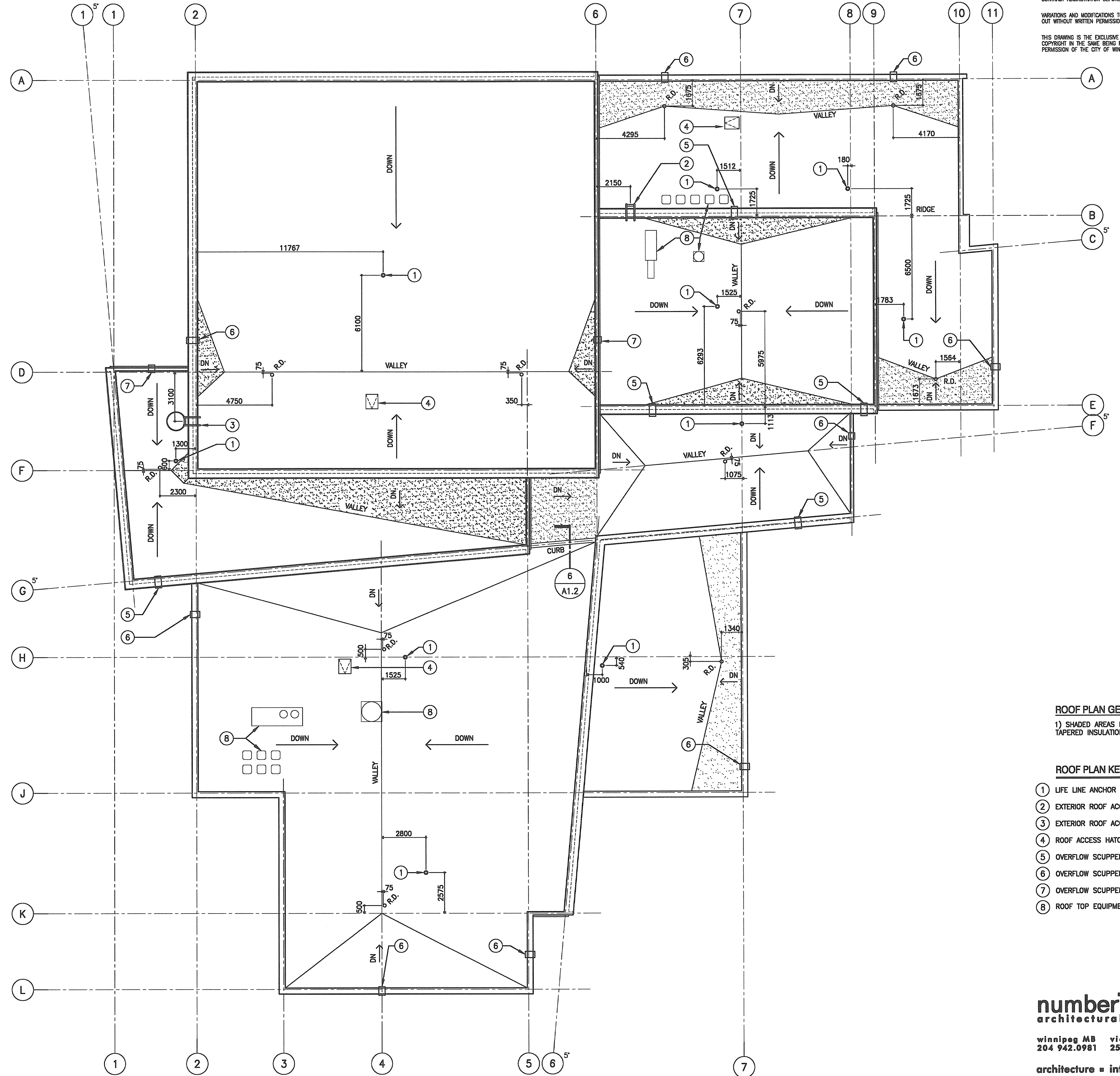


1 FOUNDATION DRAINAGE PLAN
A1.2 SCALE: 1:150



2 ROOF PLAN
A1.2 SCALE: 1:150

NOTES:

THIS DRAWING MUST NOT BE SCALED.

THE CONTRACTOR SHALL VERIFY ALL DIMENSIONS, LOCATIONS AND LEVELS PRIOR TO COMMENCEMENT OF WORK. ALL ERRORS AND OMISSIONS TO BE REPORTED TO THE CONTRACT ADMINISTRATOR BEFORE PROCEEDING.

MODIFICATIONS AND ADDITIONS TO WORK SHOWN ON THESE DRAWINGS SHALL NOT BE CARRIED OUT WITHOUT WRITTEN PERMISSION OF THE CONTRACT ADMINISTRATOR.

THIS DRAWING IS THE EXCLUSIVE PROPERTY OF NUMBER TEN ARCHITECTURAL GROUP AND THE COPYRIGHT IN THE SAME BEING RESERVED TO THEM. IT MAY BE REPRODUCED ONLY WITH THE PERMISSION OF THE CITY OF WINNIPEG.

ROOF PLAN GENERAL NOTES:

1) SHADED AREAS INDICATE EXTENT OF BACKSLOPE TAPERED INSULATION - MAX THICKNESS 50mm.

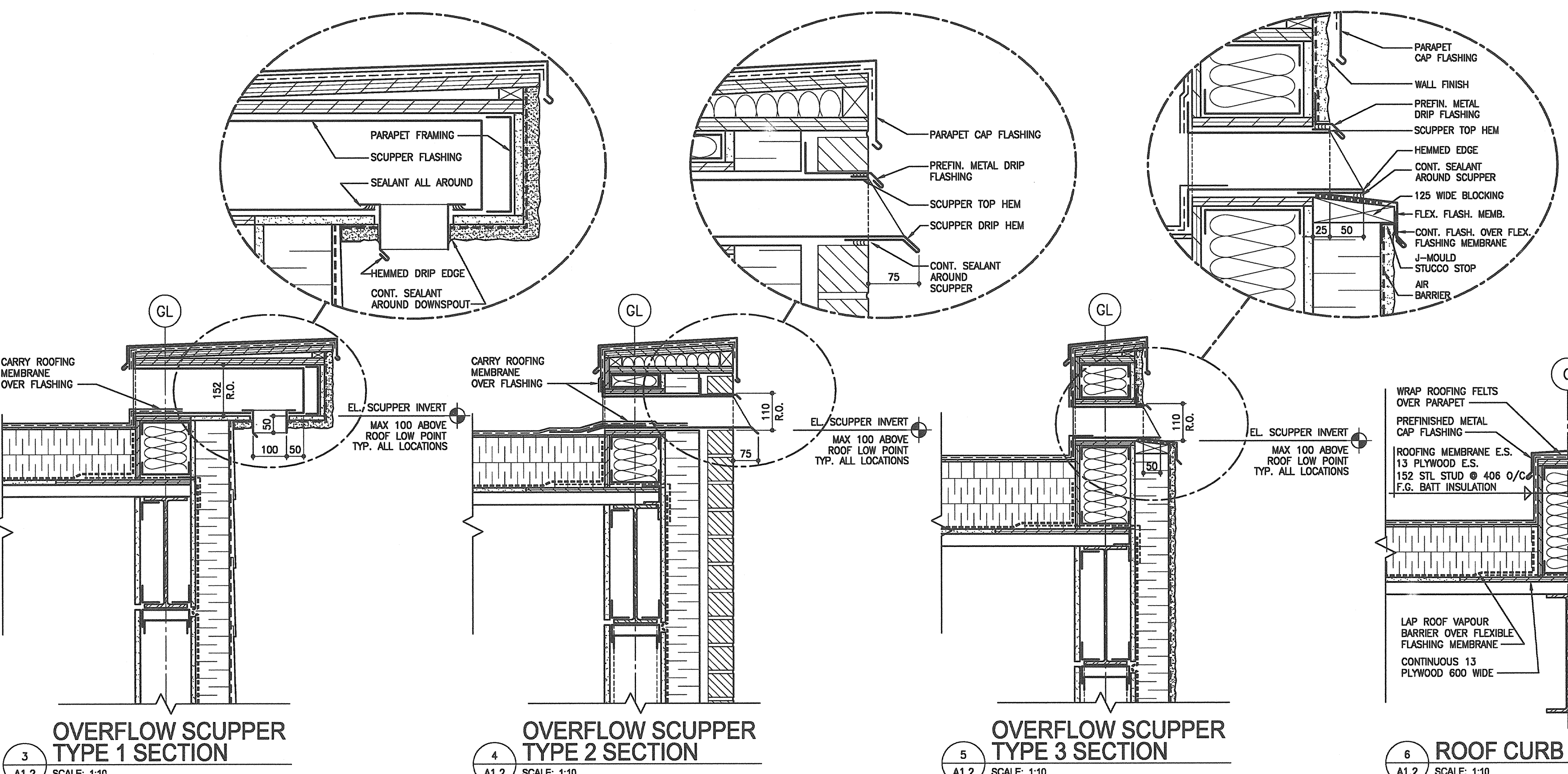
- ROOF PLAN KEYED NOTES:
- 1 LIFE LINE ANCHOR - CO-ORDINATE WITH STRUCTURAL
 - 2 EXTERIOR ROOF ACCESS LADDER - SEE DETAIL 9/A6.1
 - 3 EXTERIOR ROOF ACCESS LADDER C/W CAGED ENCLOSURE
 - 4 ROOF ACCESS HATCH - SEE DETAIL 10/A6.1
 - 5 OVERFLOW SCUPPER TYPE 1 - SEE DETAIL 3/A1.2
 - 6 OVERFLOW SCUPPER TYPE 2 - SEE DETAIL 4/A1.2
 - 7 OVERFLOW SCUPPER TYPE 3 - SEE DETAIL 5/A1.2
 - 8 ROOF TOP EQUIPMENT - SEE MECHANICAL

numberTEN architectural group

204 942.0981 victoria BC 250 360.2106

architecture = interior design = graphic design

▲ ISSUED FOR 40% REVIEW	28-OCT-2007	
▲ ISSUED FOR CLASS 'X' OPINION OF PROBABLE COSTS	28-NOV-2007	
▲ ISSUED FOR 80% REVIEW	7-DEC-2007	
▲ ISSUED FOR 100% REVIEW	11-JAN-2008	
▲ ISSUED FOR TENDER	16-JAN-2008	
NO.	REVISION/DESCRIPTION	DATE

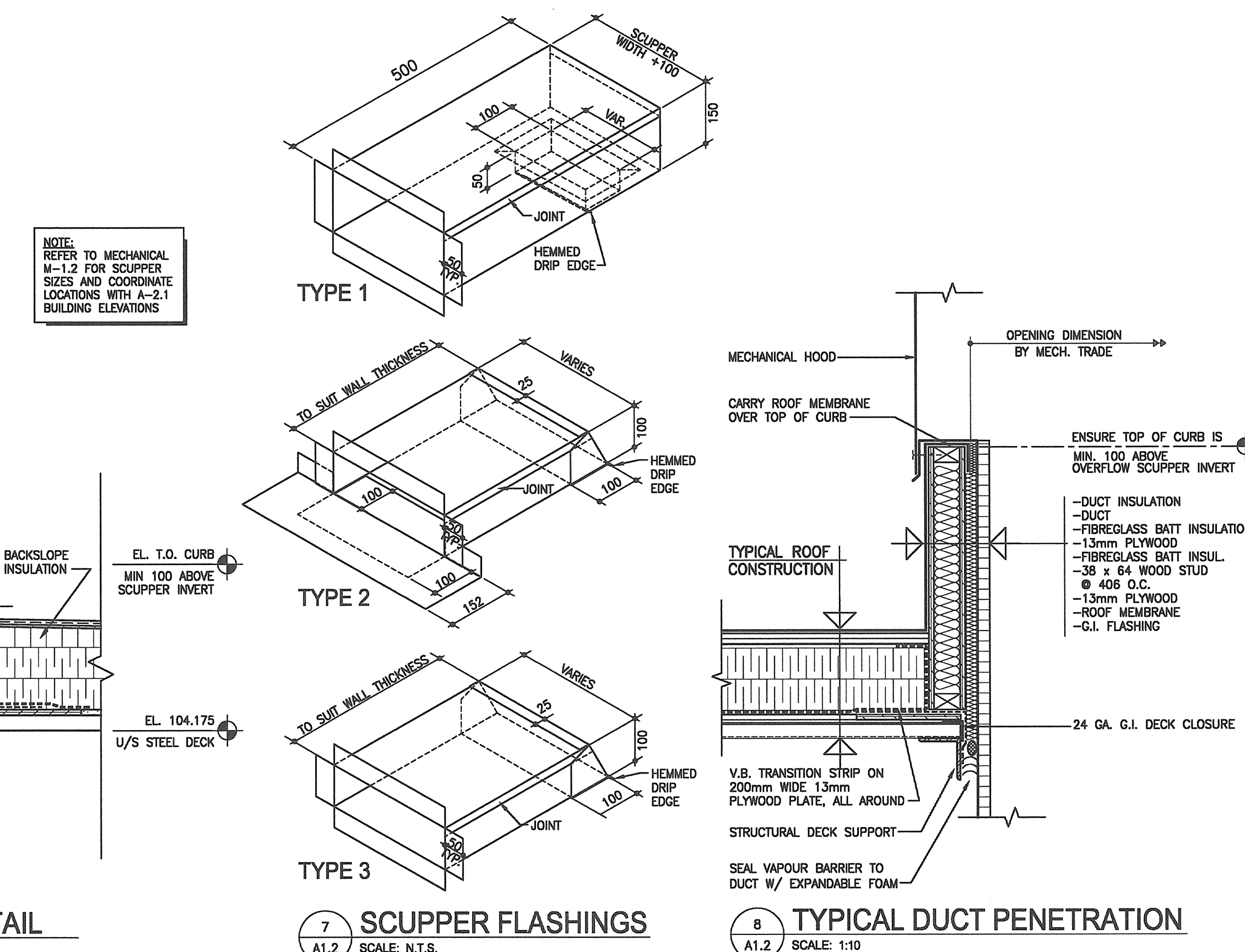


3 OVERFLOW SCUPPER TYPE 1 SECTION
A1.2 SCALE: 1:10

4 OVERFLOW SCUPPER TYPE 2 SECTION
A1.2 SCALE: 1:10

5 OVERFLOW SCUPPER TYPE 3 SECTION
A1.2 SCALE: 1:10

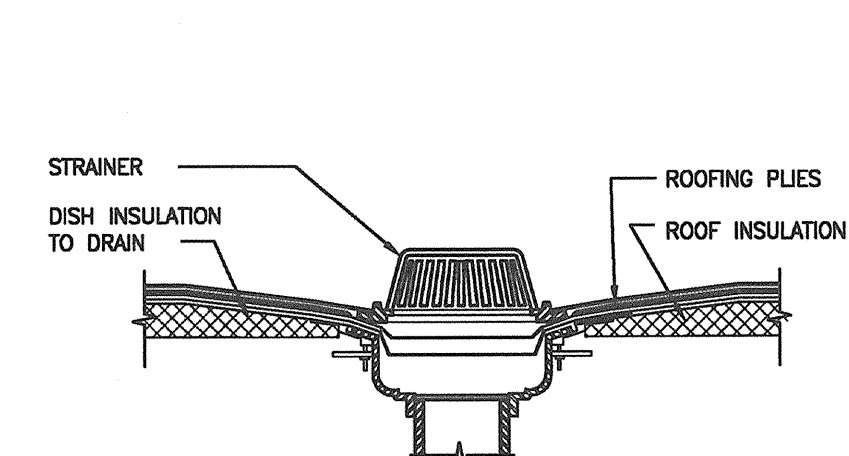
6 ROOF CURB DETAIL
A1.2 SCALE: 1:10



7 SCUPPER FLASHINGS
A1.2 SCALE: N.T.S.

8 TYPICAL DUCT PENETRATION
A1.2 SCALE: 1:10

10 MECH. EQUIPMENT SUPPORT
A1.2 SCALE: 1:10



9 TYPICAL ROOF DRAIN DETAIL
A1.2 SCALE: 1:10

PROVINCE OF MANITOBA REGISTERED ARCHITECT

PROVINCE OF MANITOBA REGISTERED ARCHITECT

NUMBER TEN ARCHITECTURAL GROUP

DOUG HANNA REGISTERED ARCHITECT

DRAWN BY: JMG CHECKED BY: DH APPROVED: [Signature]

DATE: 18-JAN-2008 USER APPROVAL:

CITY OF WINNIPEG PLANNING, PROPERTY & DEVELOPMENT DEPARTMENT CIVIC ACCOMMODATIONS DIVISION

300 - 65 GARRY ST. R3C 4K4

PROJECT: BRONX PARK COMMUNITY CENTRE HOME OF GOOD NEIGHBOURS SENIOR CENTRE WINNIPEG, MANITOBA

SHEET TITLE: FOUNDATION AND ROOF PLAN

SCALE: AS SHOWN PROJECT NO: PPD 2006-065 SHEET NO: A-1.2

DRAWING SHEET SIZE: A0 (1189mm x 841mm) PLOT 1:1