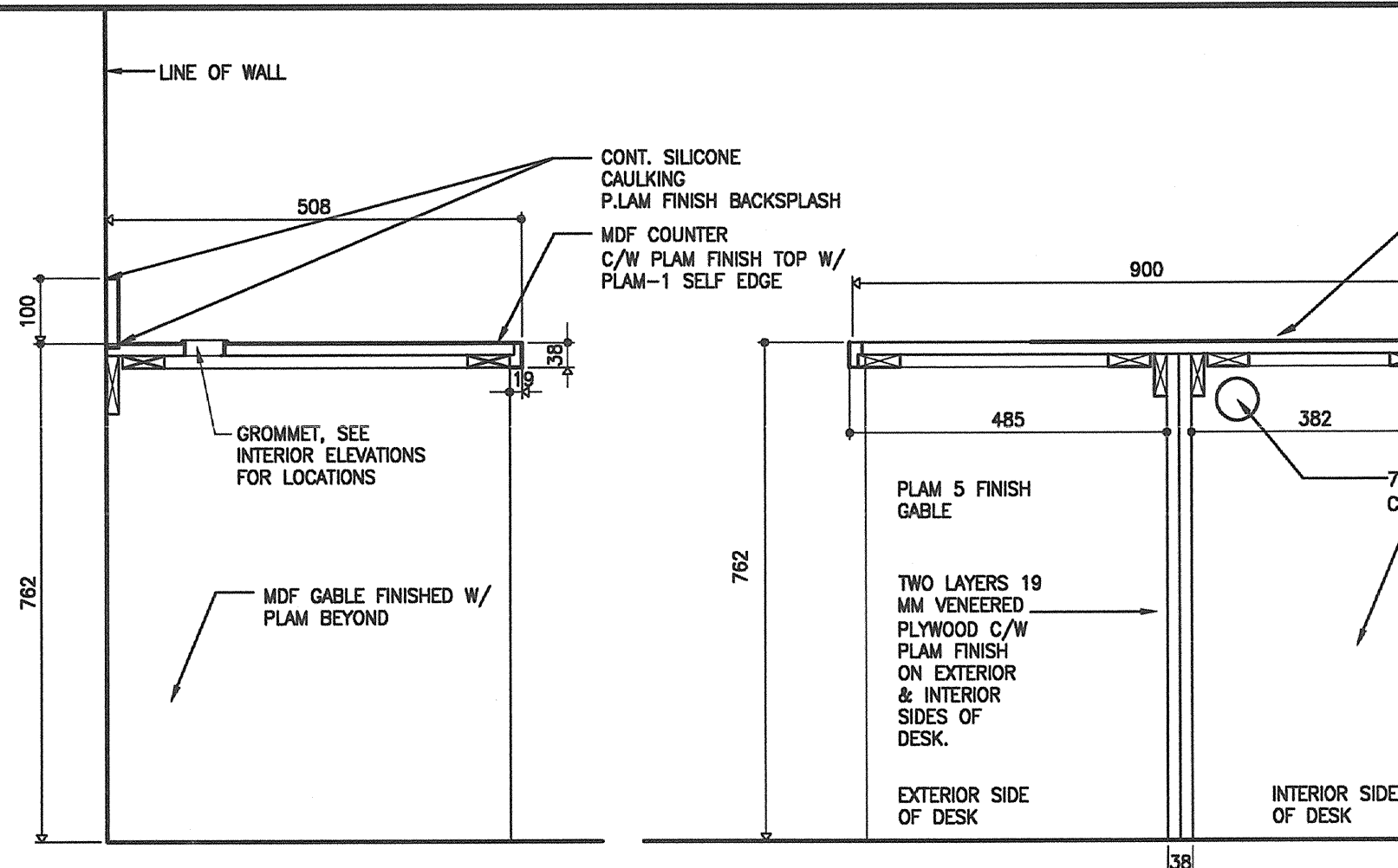
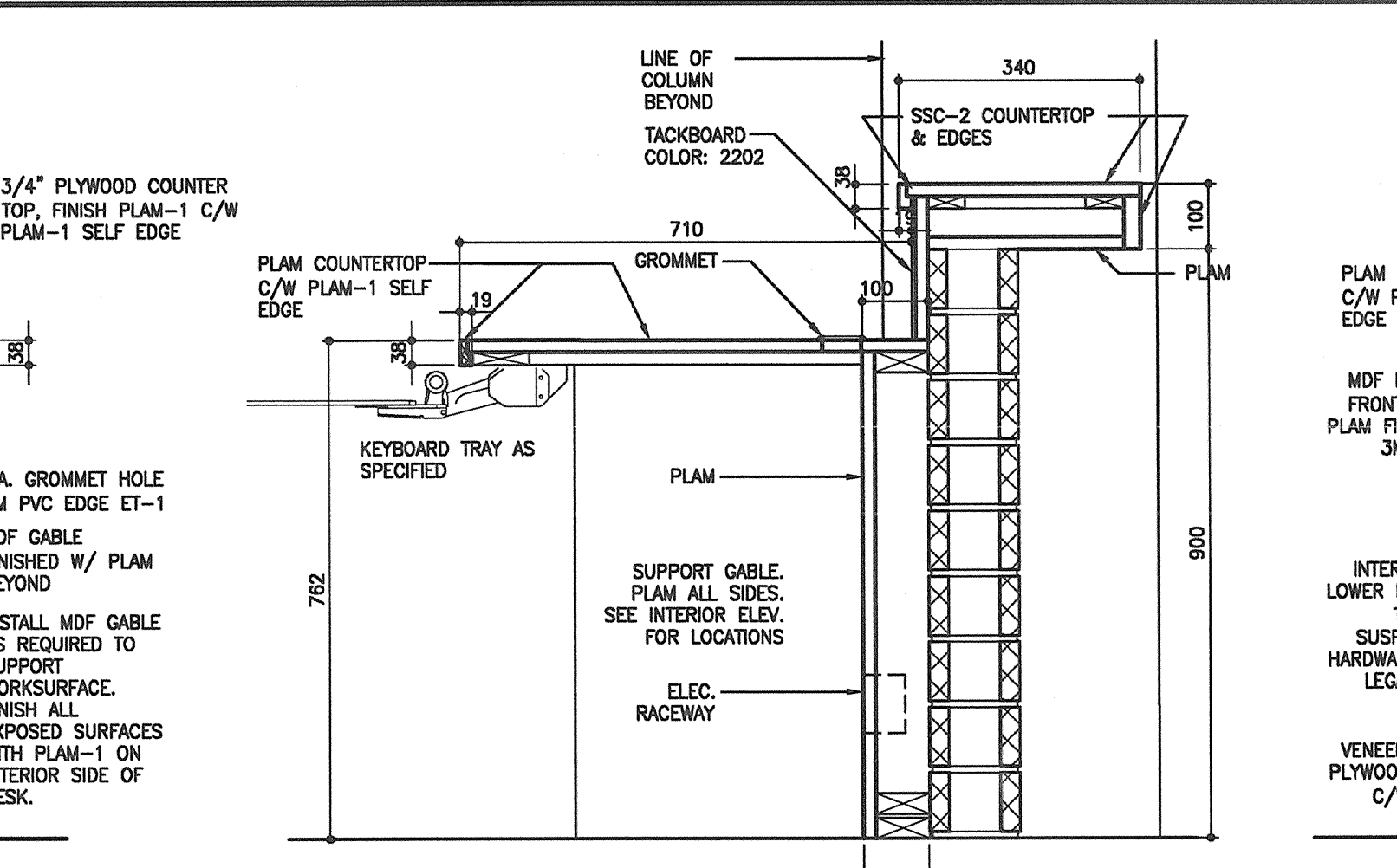


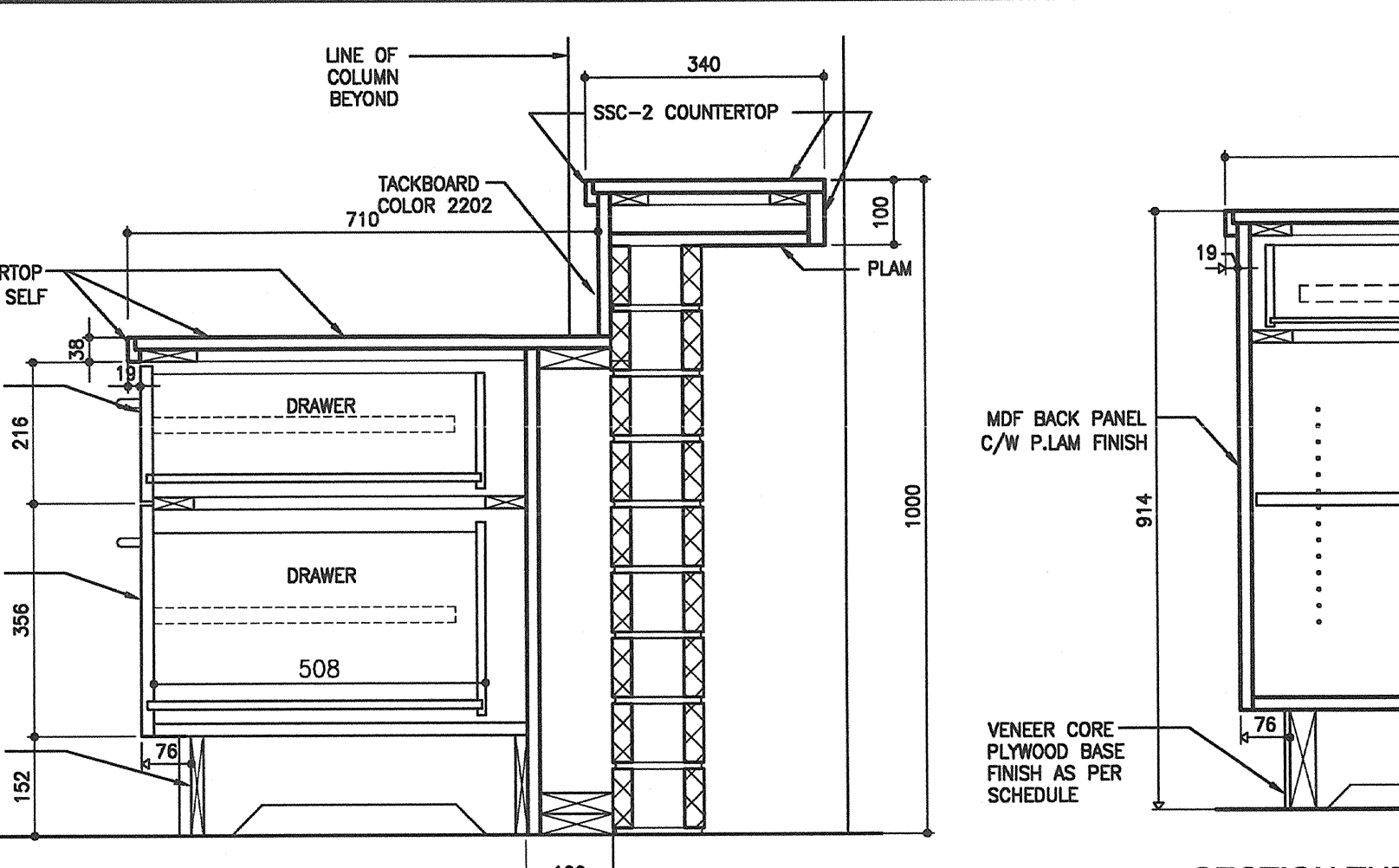
1 CHAIR & DISPLAY RAIL  
SCALE: 1:5



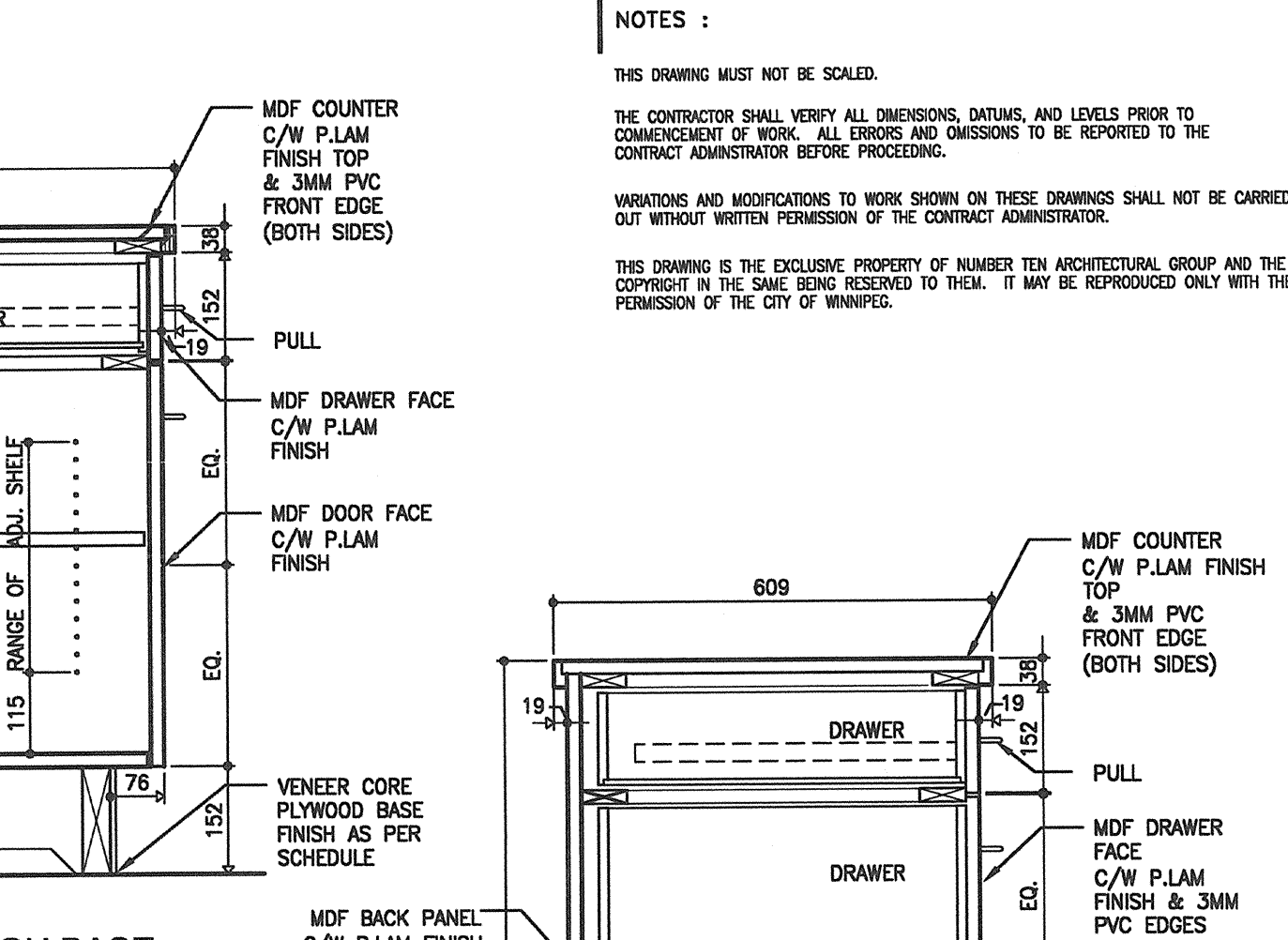
2 SECTION THROUGH BASE CABINET OPEN TYP.  
SCALE: 1:10



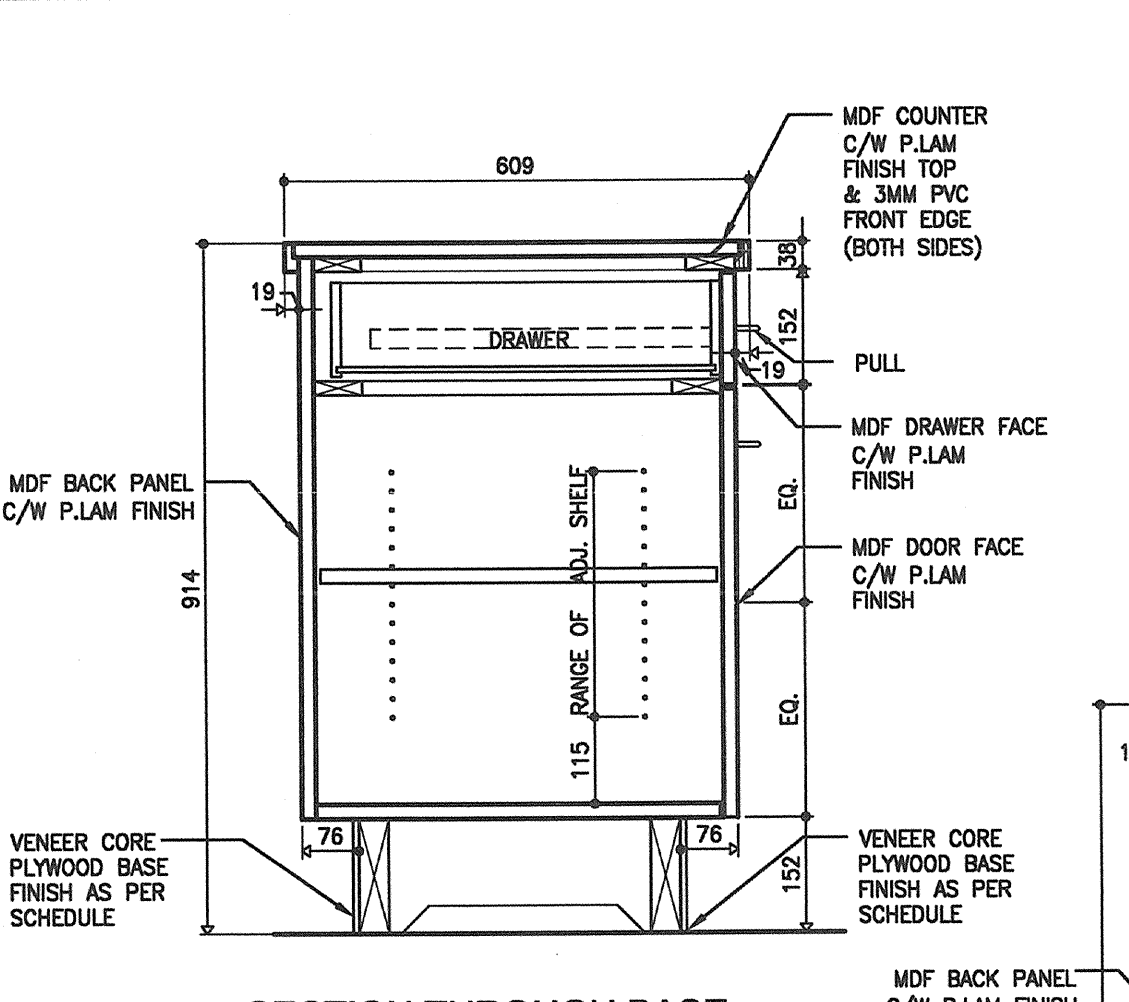
3 SECTION THROUGH BASE CABINET OPEN TYP.  
SCALE: 1:10



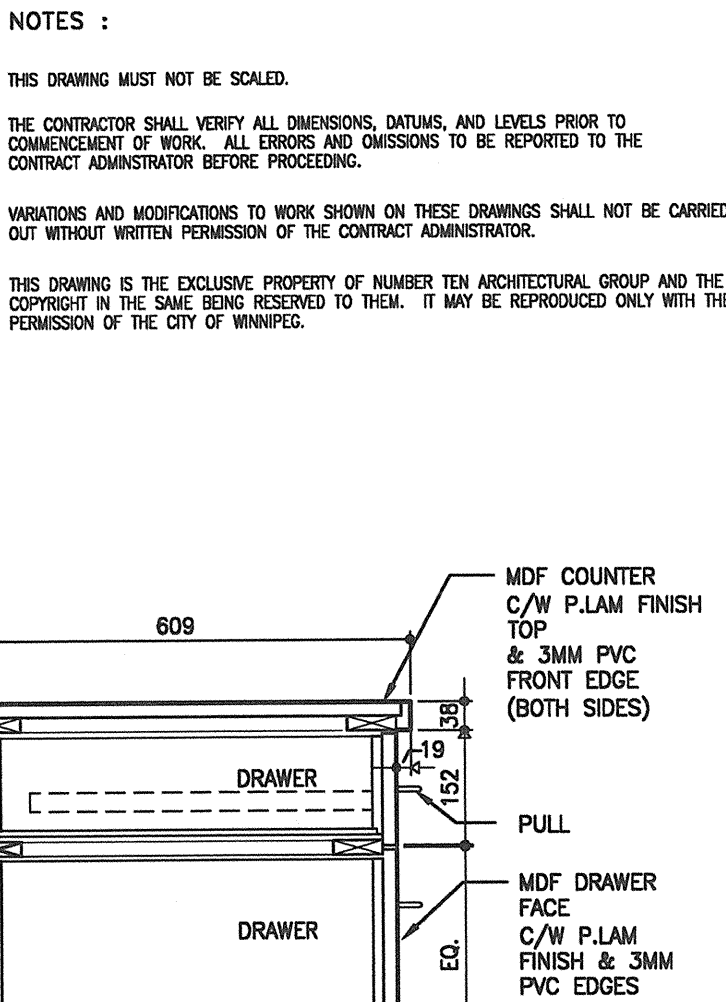
4 SECTION THRU RECEPTION TYP.  
SCALE: 1:10



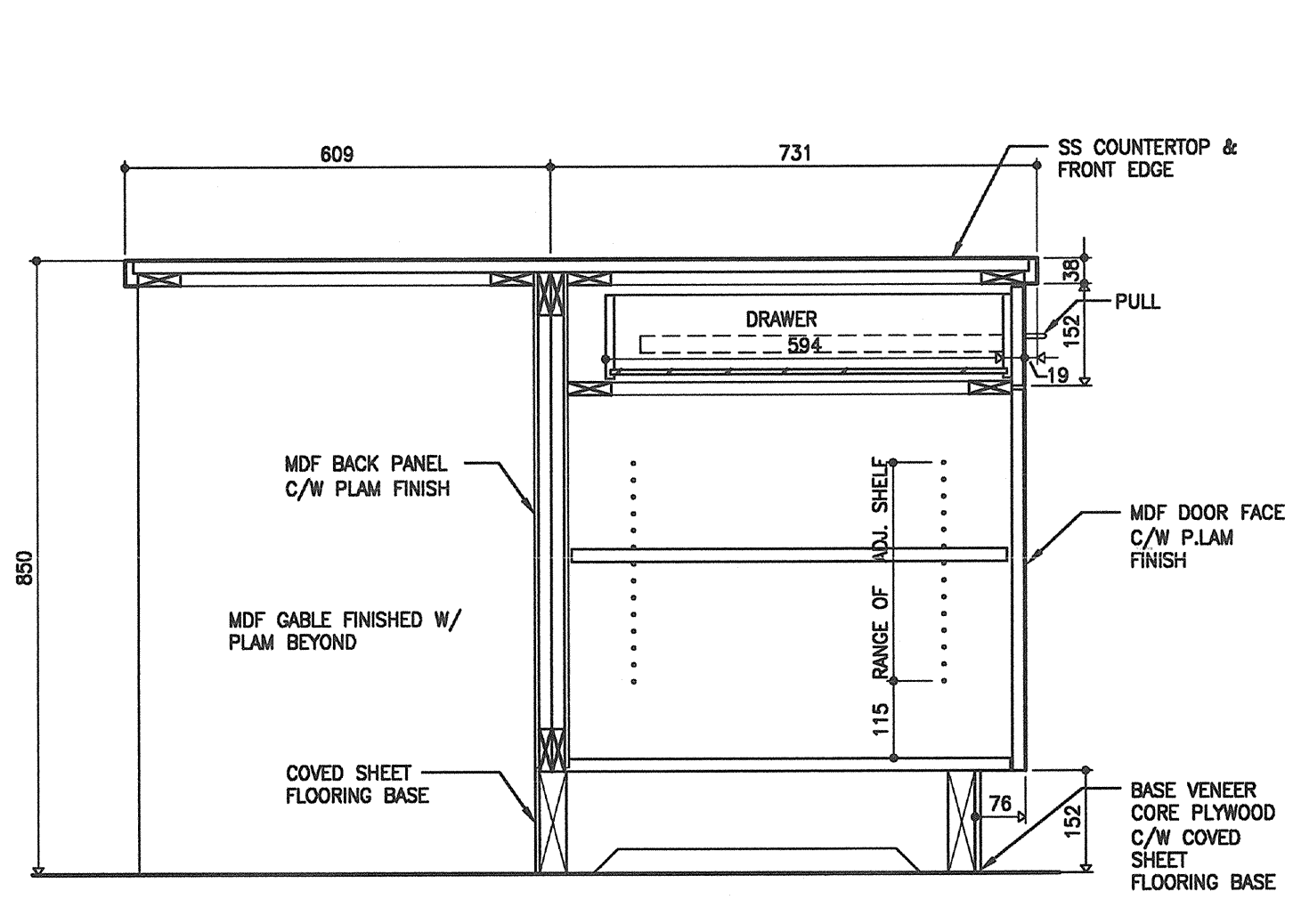
5 SECTION THRU RECEPTION TYP.  
SCALE: 1:10



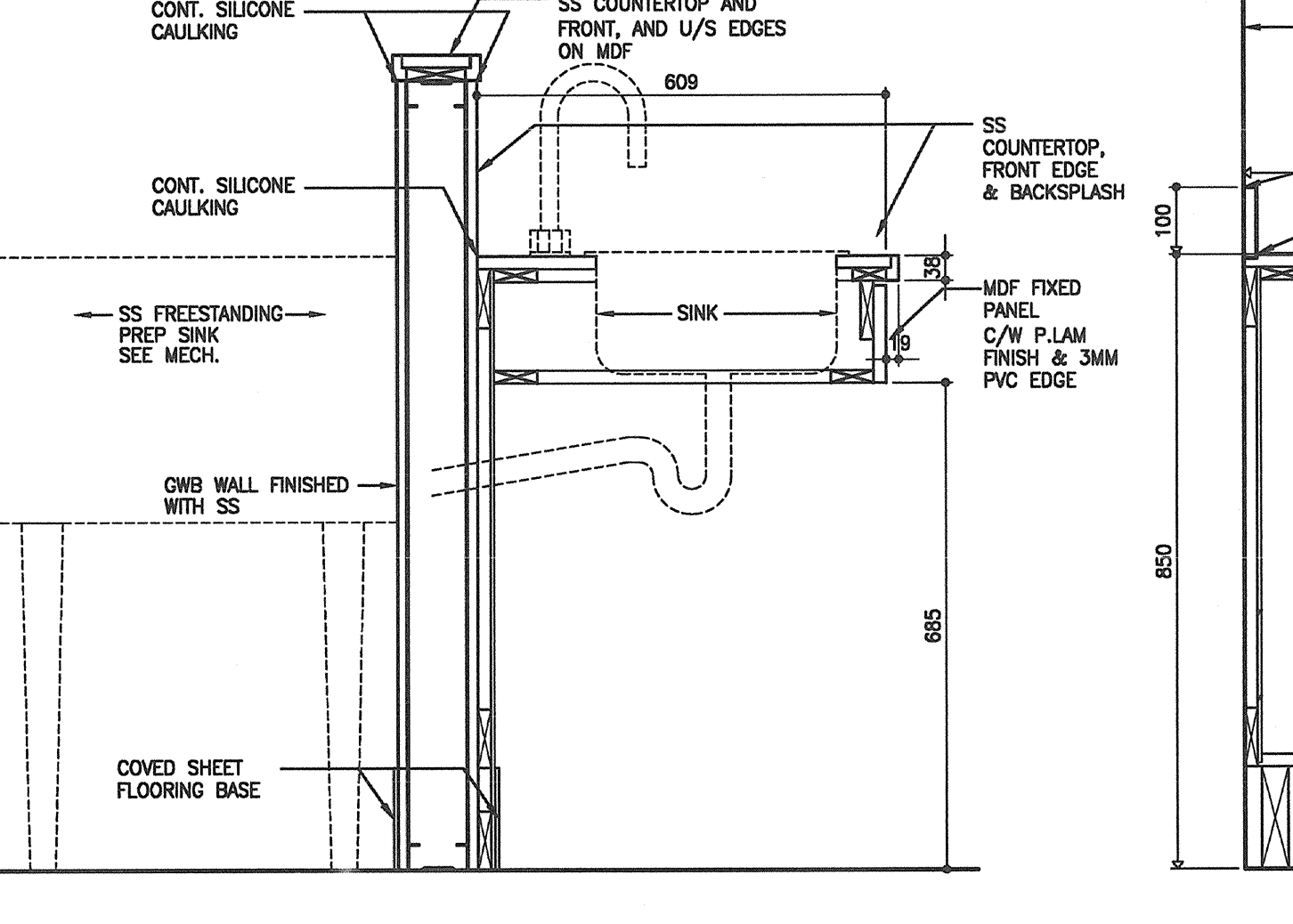
6 SECTION THROUGH BASE CABINET AT CANTEEN ISLAND  
SCALE: 1:10



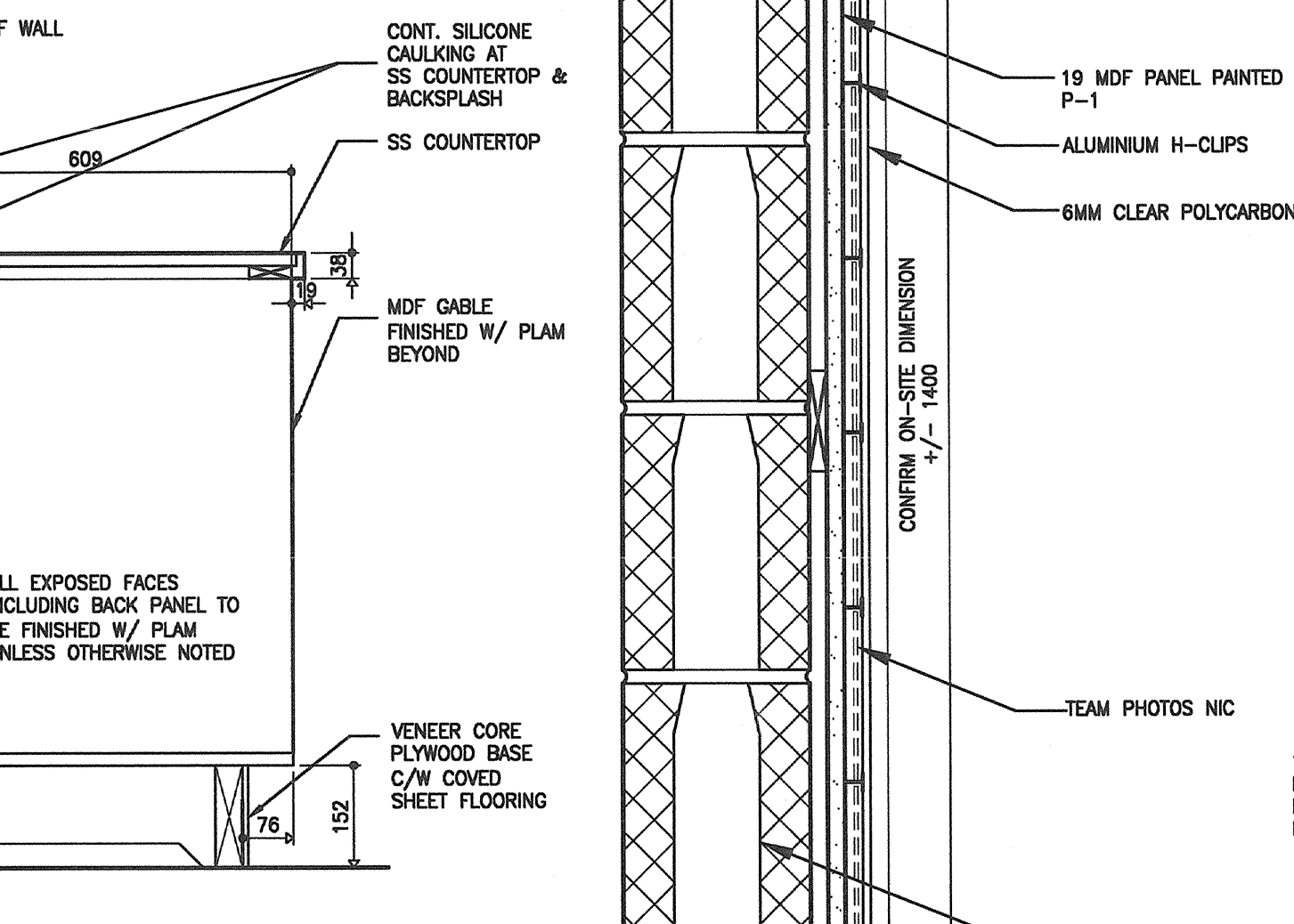
7 SECTION THROUGH BASE CABINET AT CANTEEN ISLAND  
SCALE: 1:10



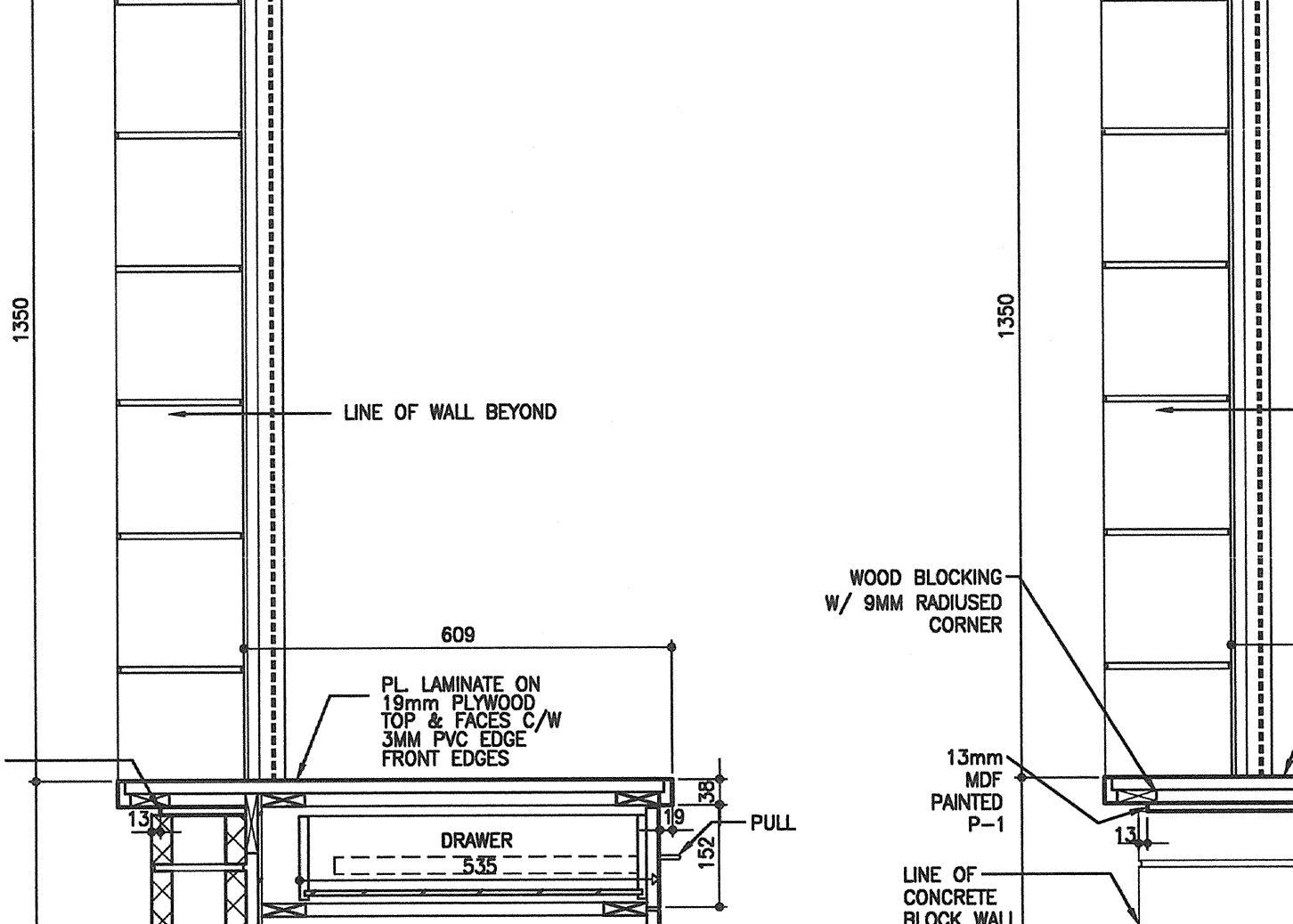
8 SECTION THROUGH BASE CABINET W/ SS COUNTERTOP  
SCALE: 1:10



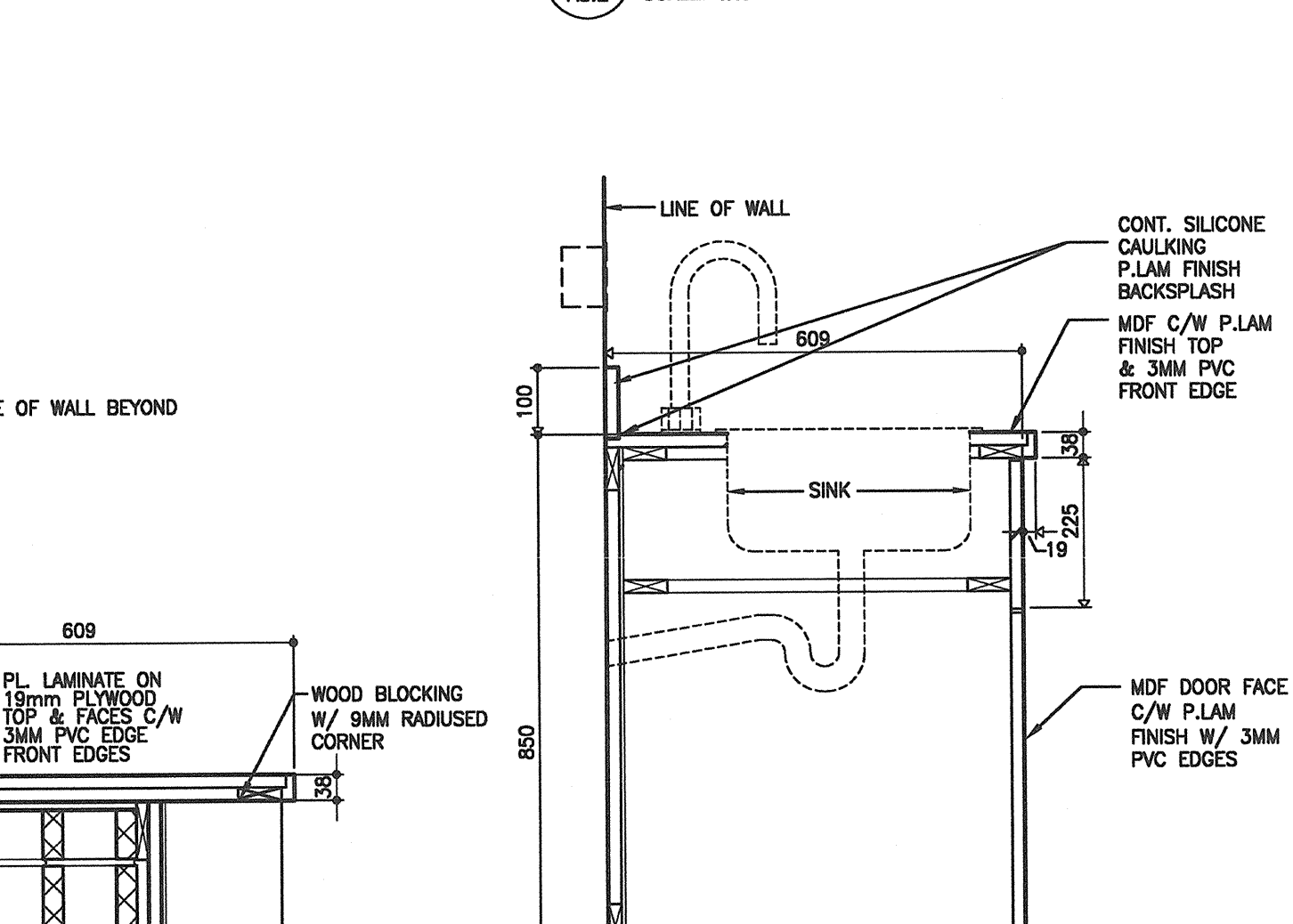
9 SECTION THROUGH BASE CABINET W/ SS AND SINK  
SCALE: 1:10



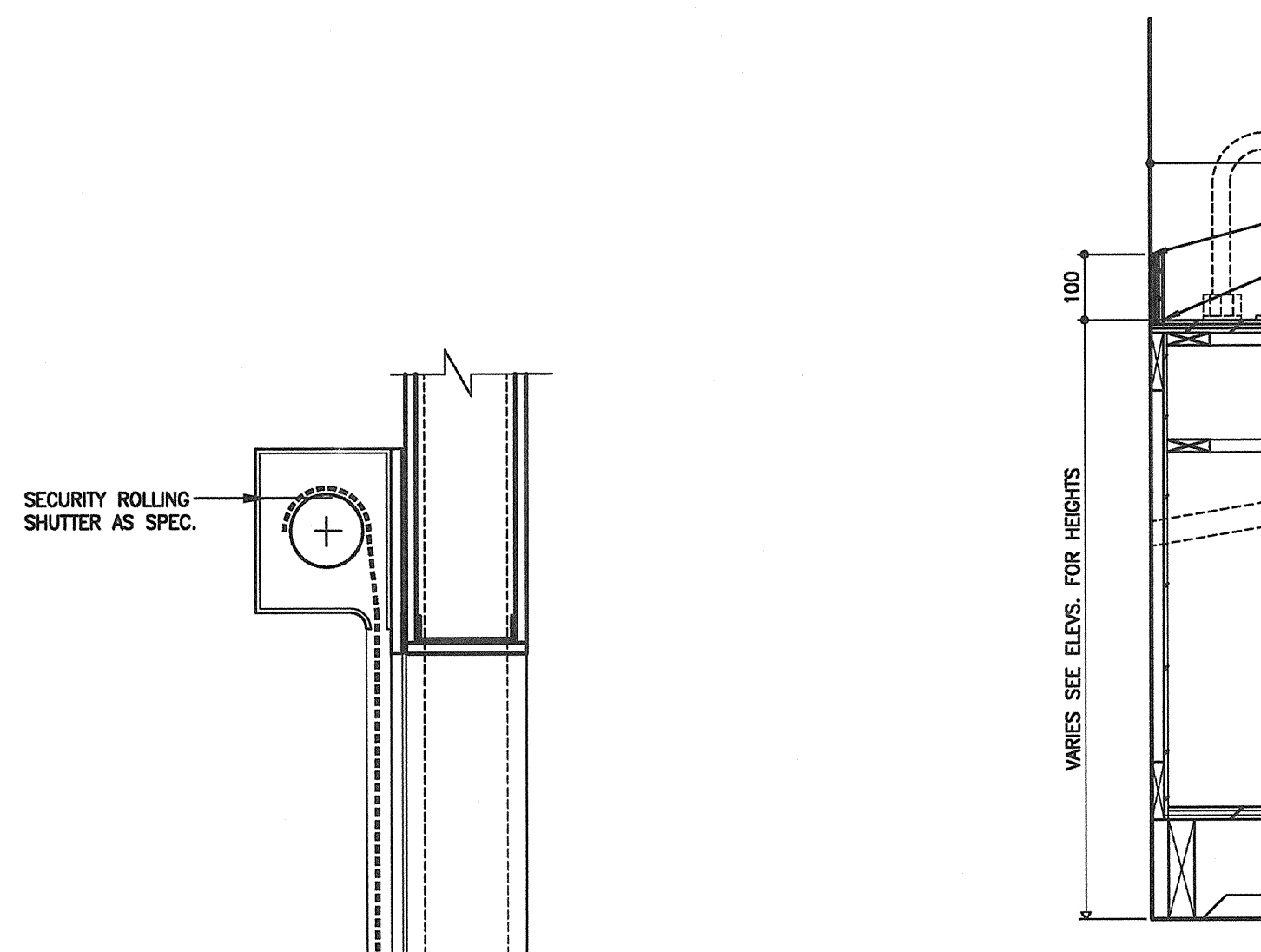
10 SECTION THROUGH BASE CABINET AT TRAY STORAGE  
SCALE: 1:10



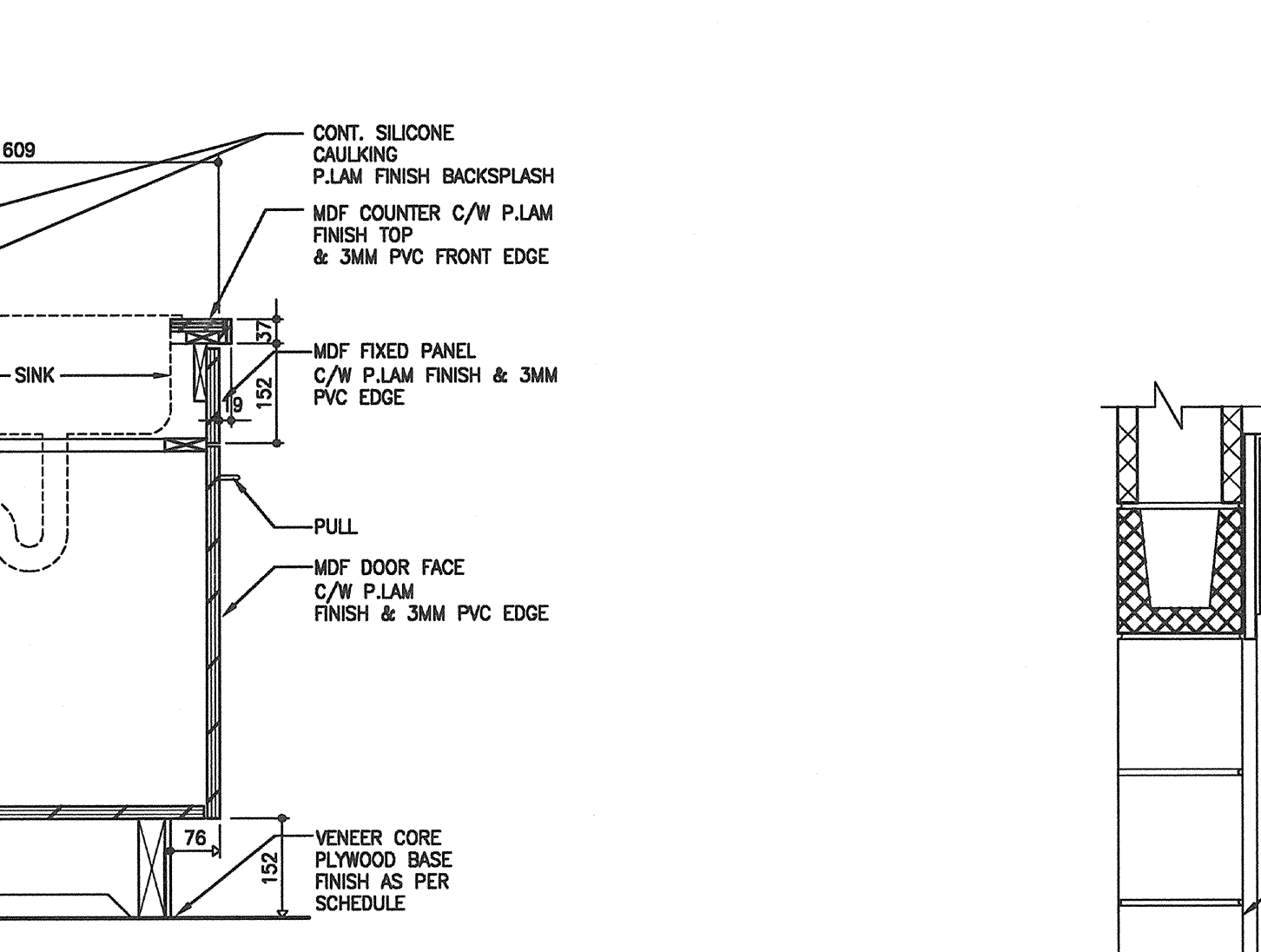
11 SECTION THRU ROLLER SHUTTER AT GYMNASIUM  
SCALE: 1:10



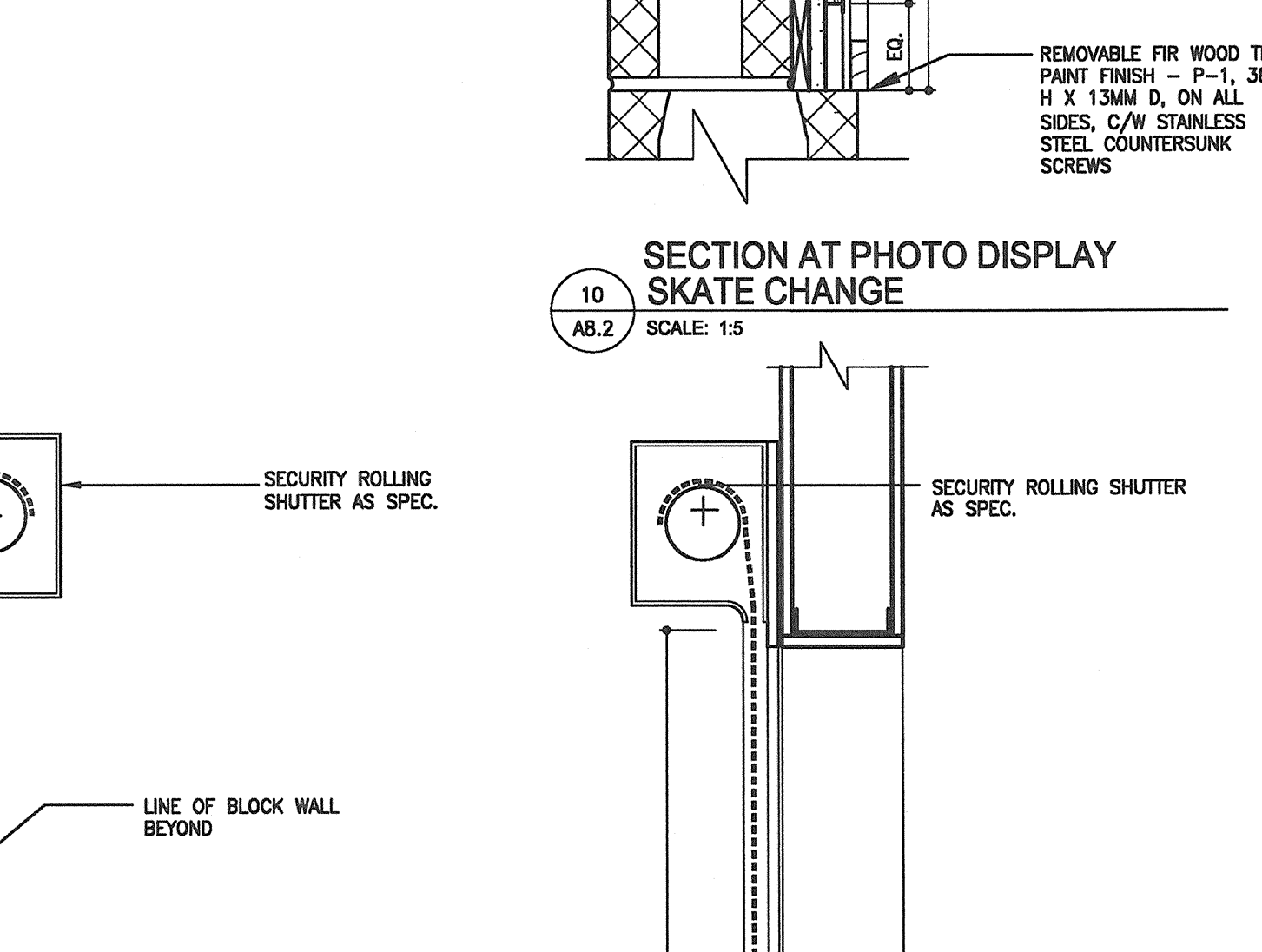
12 SECTION THRU ROLLER SHUTTER AT GYMNASIUM  
SCALE: 1:10



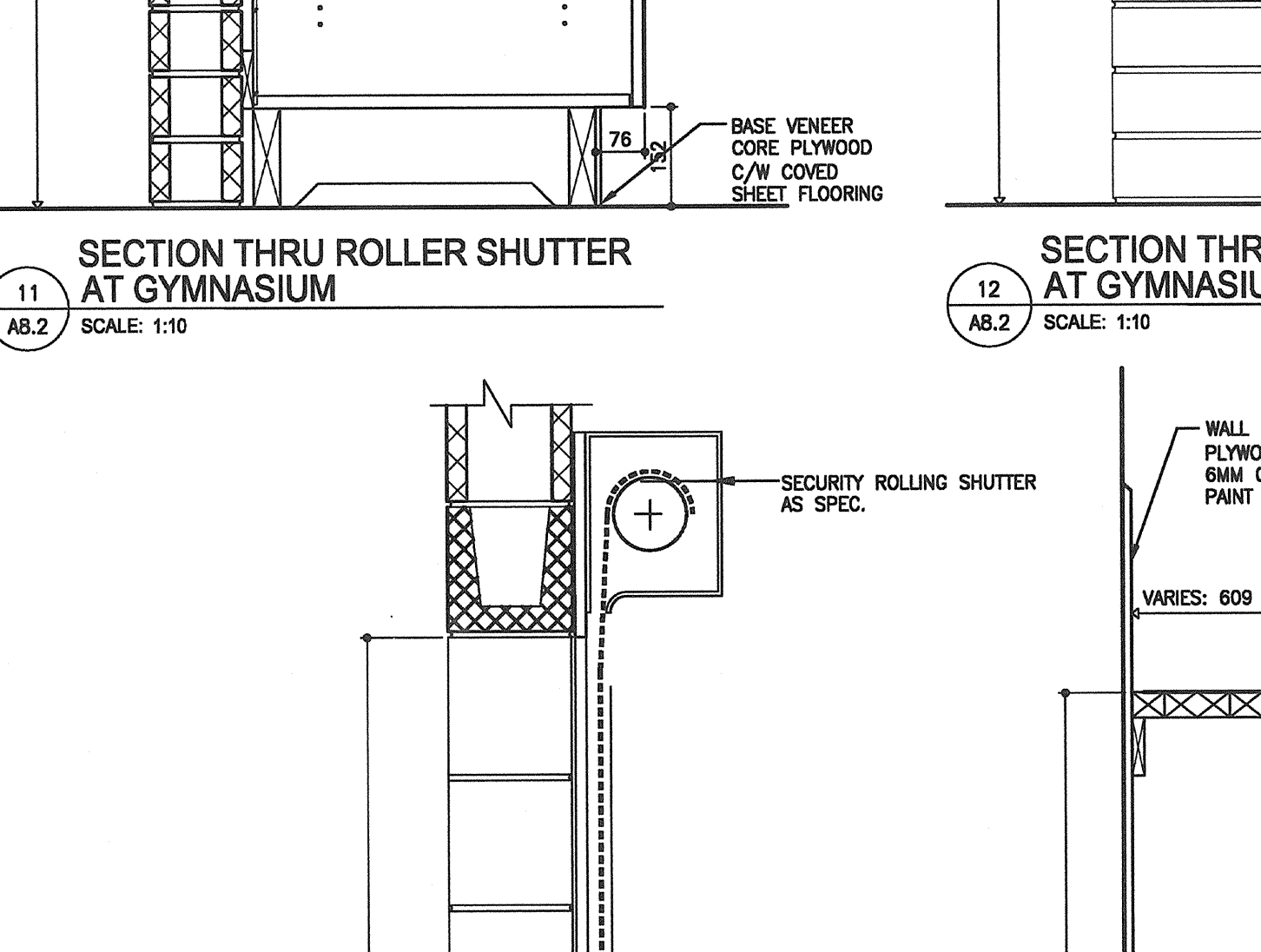
13 SECTION THROUGH BASE CABINET W/ SS COUNTERTOP  
SCALE: 1:10



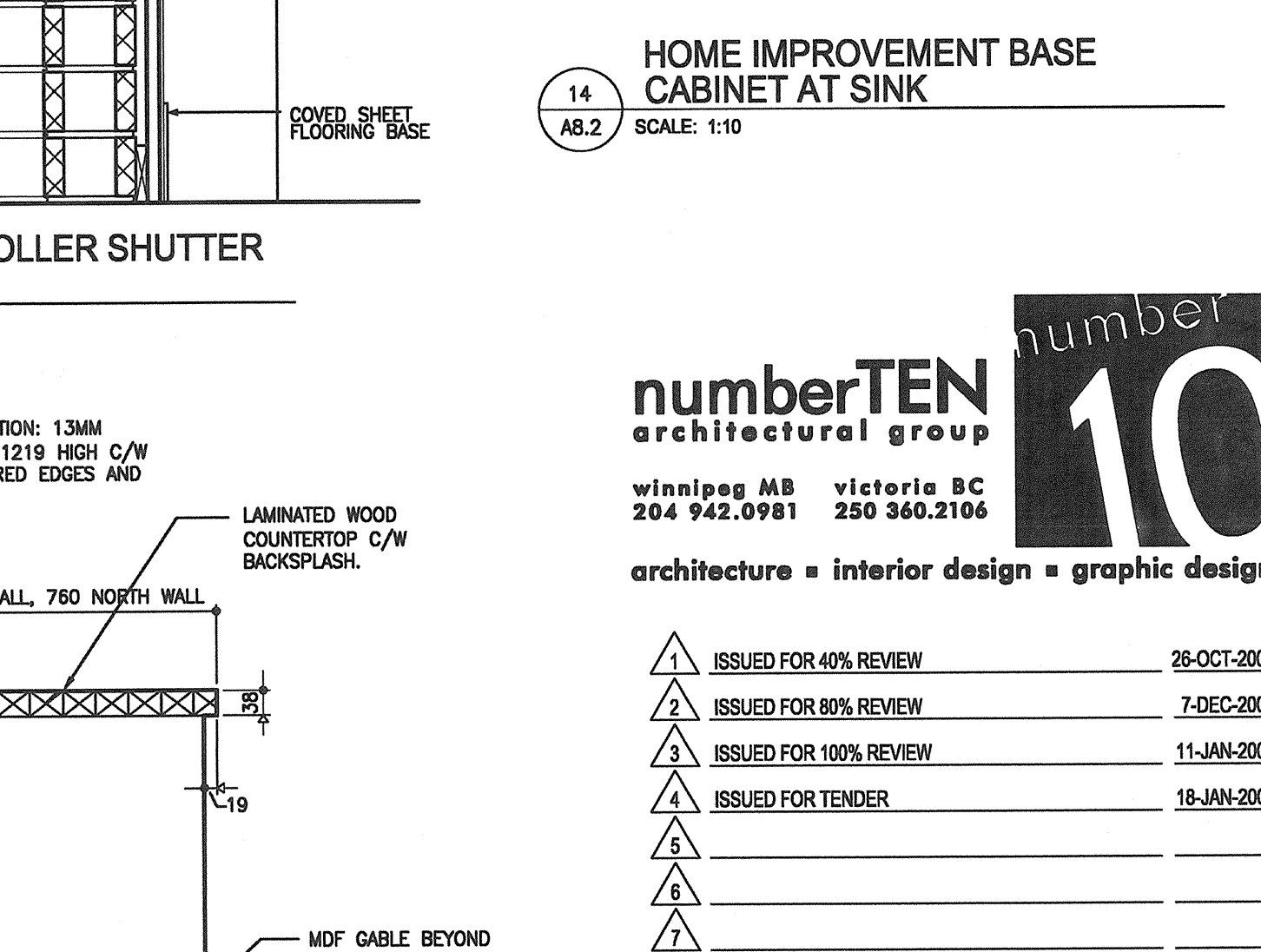
14 SECTION THROUGH BASE CABINET W/ SS AND SINK  
SCALE: 1:10



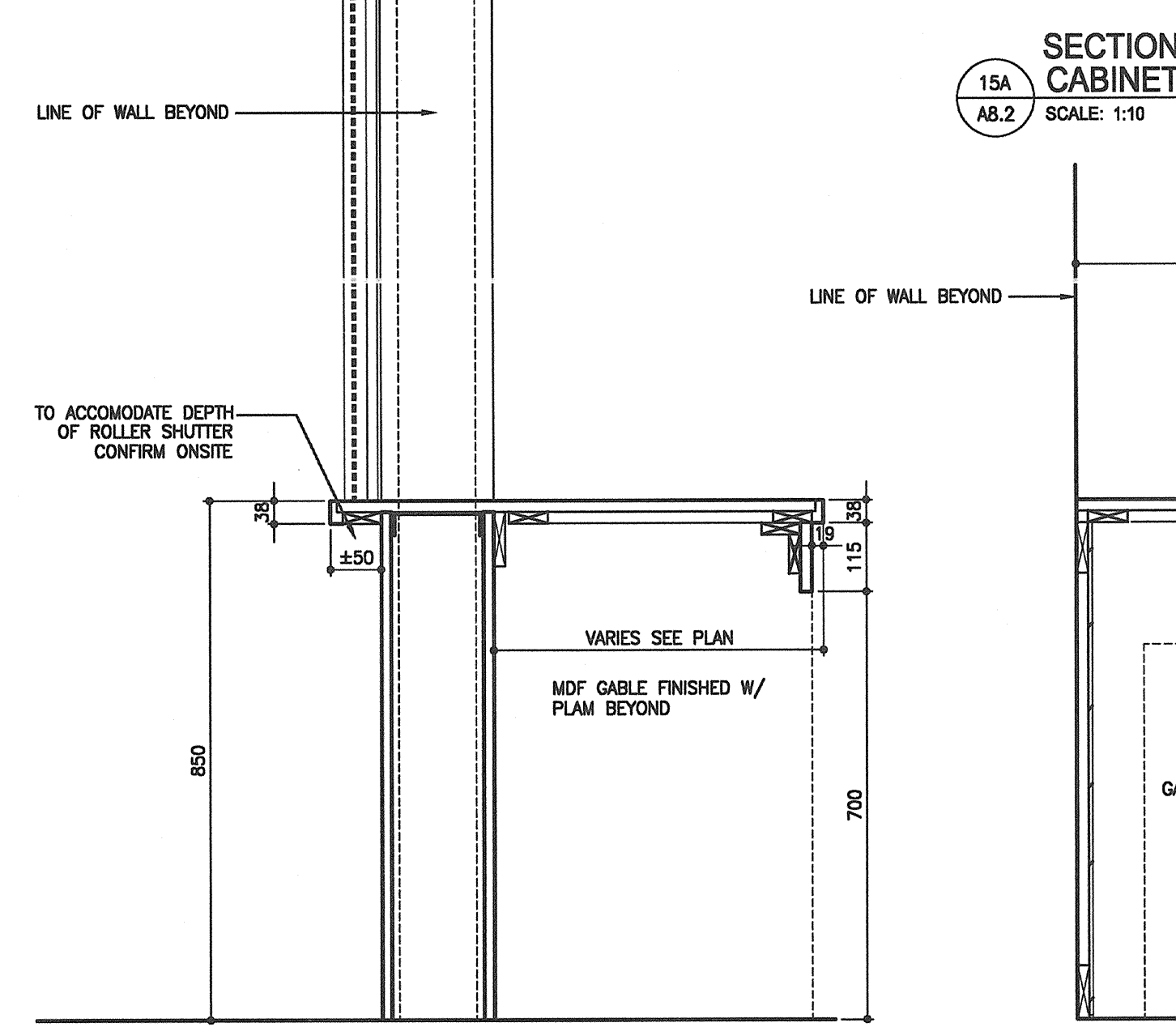
15 SECTION AT PHOTO DISPLAY SKATE CHANGE  
SCALE: 1:5



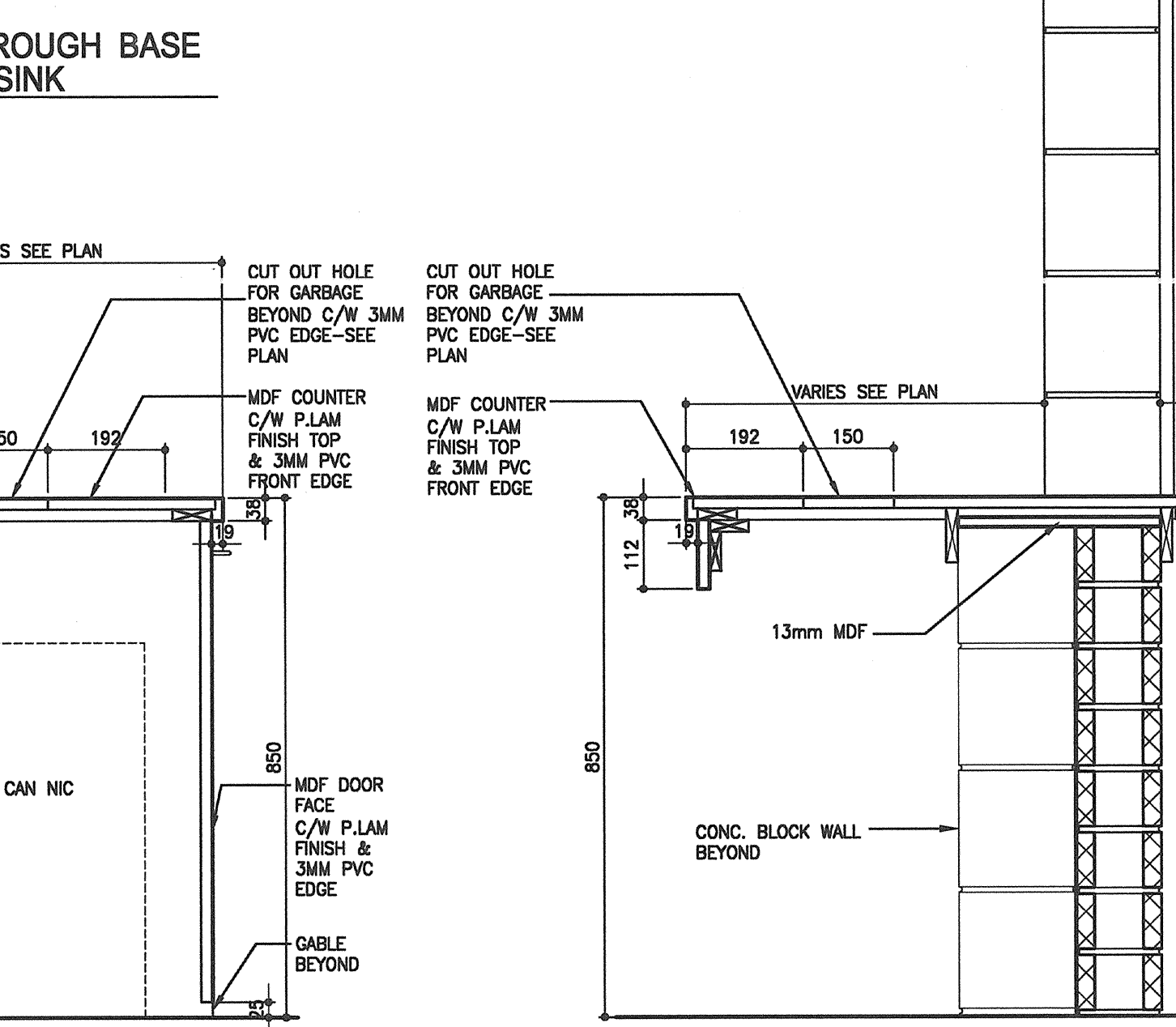
16 SECTION THRU ROLLER SHUTTER AT GYMNASIUM  
SCALE: 1:10



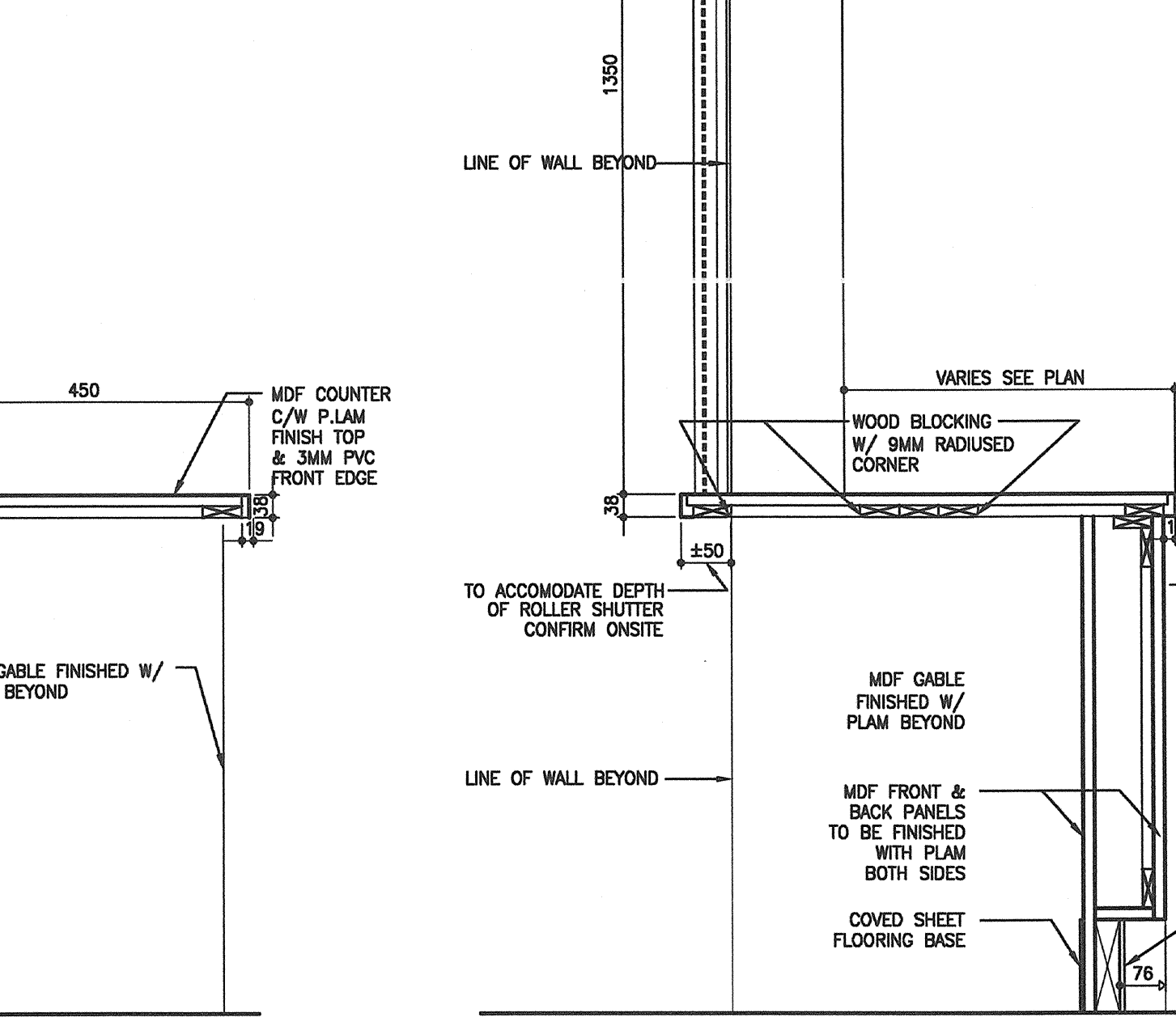
17 SECTION THRU ROLLER SHUTTER AT GYMNASIUM  
SCALE: 1:10



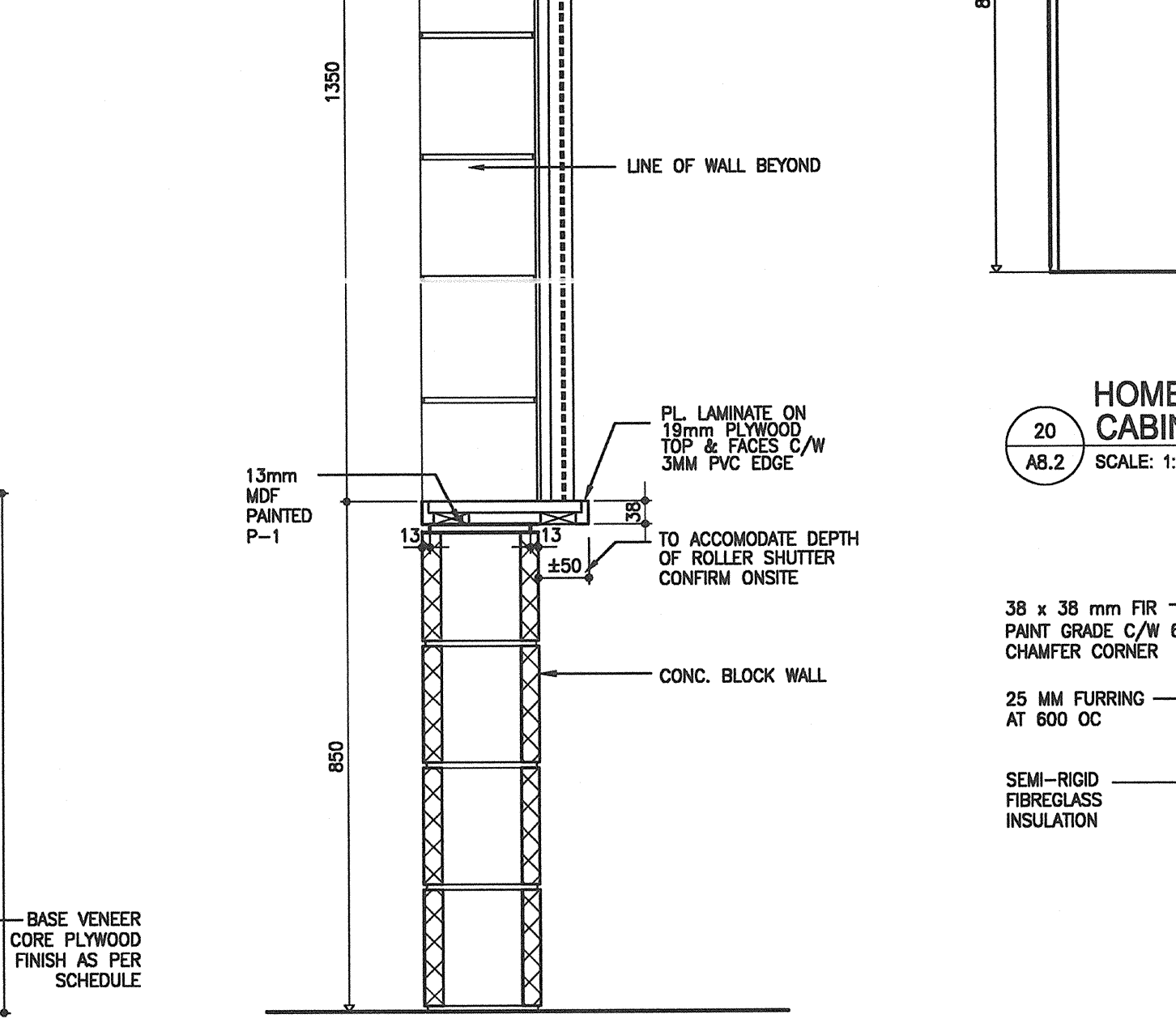
18 SECTION THROUGH BASE CABINET W/ SINK  
SCALE: 1:10



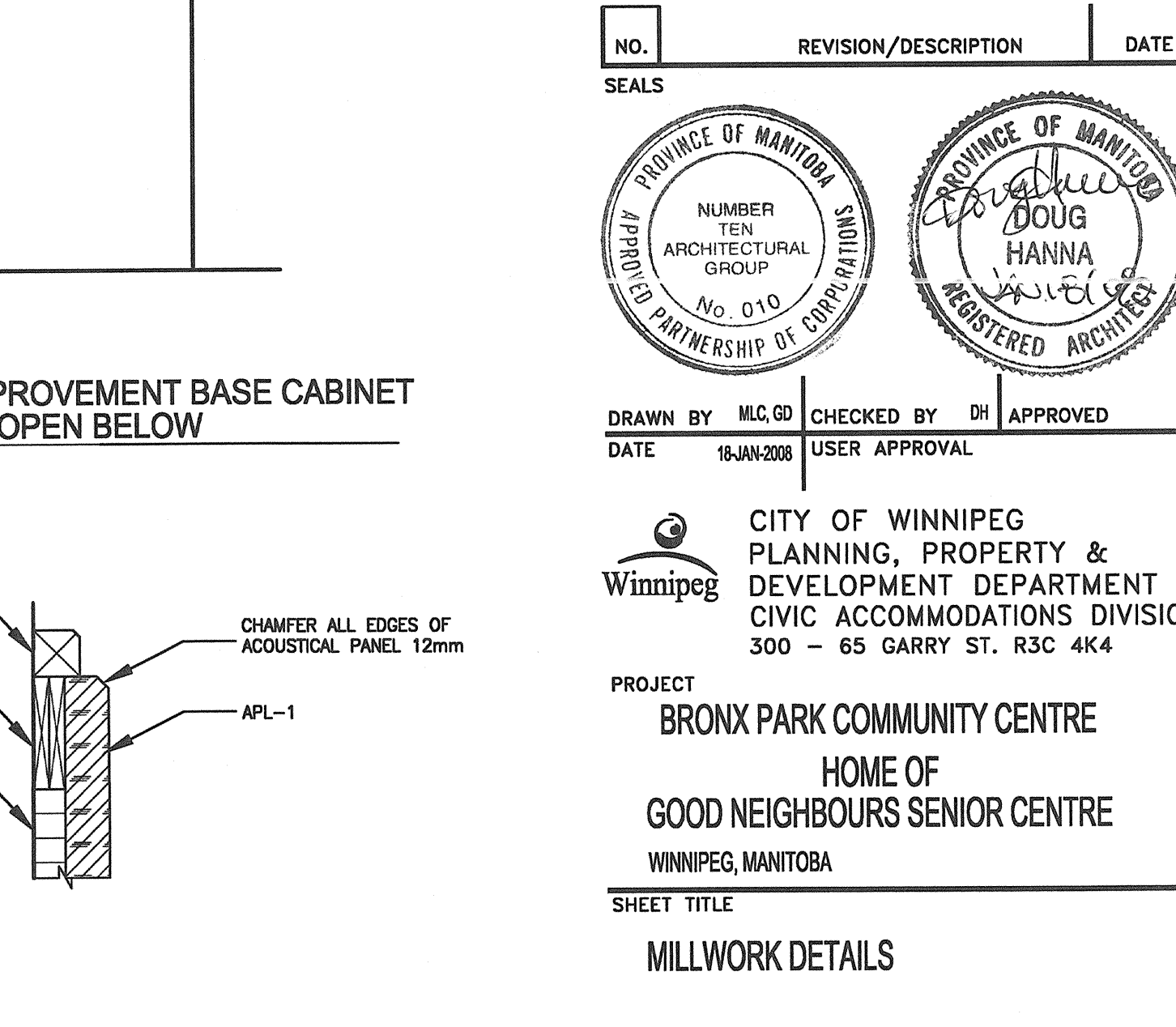
19 SECTION THROUGH KITCHEN COUNTER AT GYPSUM WALL & CUPBOARD  
SCALE: 1:10



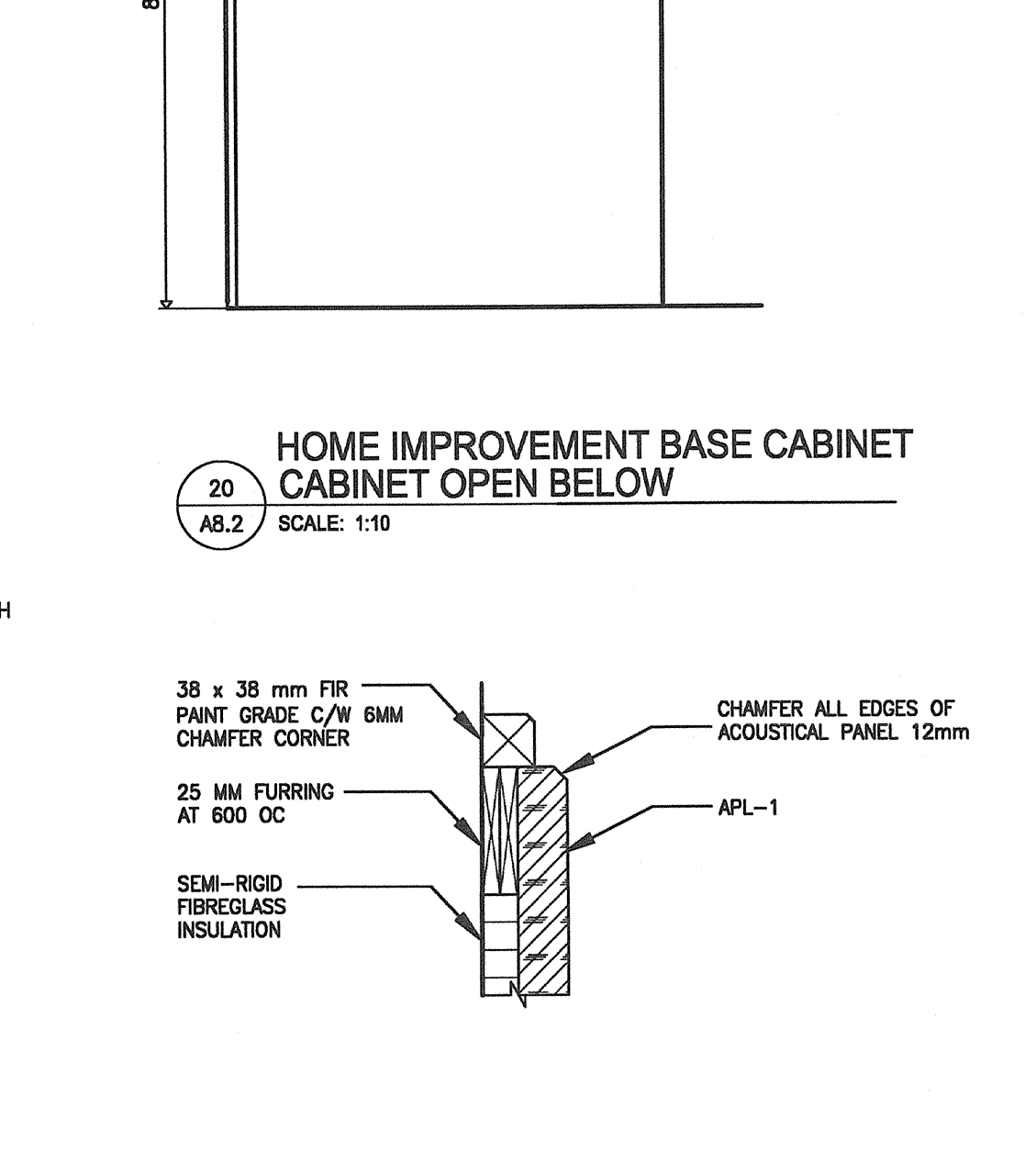
20 SECTION THRU KITCHEN COUNTER W/ PLAM COUNTERTOP  
SCALE: 1:10



21 SECTION THRU KITCHEN COUNTER AT GYPSUM WALL BARRIER FREE  
SCALE: 1:10



22 SECTION THRU ROLLER SHUTTER AT SKATE CHANGE  
SCALE: 1:10



23 DETAIL OF FIR TRIM AT ACOUSTICAL PANELS  
SCALE: 1:5

NOTES:  
THIS DRAWING MUST NOT BE SCALED.  
THE CONTRACTOR SHALL VERIFY ALL DIMENSIONS, DATUMS, AND LEVELS PRIOR TO COMMENCEMENT OF WORK. ALL ERRORS AND OMISSIONS TO BE REPORTED TO THE CONTRACT ADMINISTRATOR BEFORE PROCEEDING.  
VARIATIONS AND MODIFICATIONS TO WORK SHOWN ON THESE DRAWINGS SHALL NOT BE CARRIED OUT WITHOUT WRITTEN PERMISSION OF THE CONTRACT ADMINISTRATOR.  
THIS DRAWING IS THE EXCLUSIVE PROPERTY OF NUMBER TEN ARCHITECTURAL GROUP AND THE CONTRACTOR IN THE CASE BEING REFERRED TO HEREIN. IT MAY BE REPRODUCED ONLY WITH THE PERMISSION OF THE CITY OF WINNIPEG.

numberTEN architectural group  
10  
Winnipeg AB Victoria BC  
204.942.0981 250.360.2106  
architecture • interior design • graphic design

ISSUED FOR 40% REVIEW	28-OCT-2007
ISSUED FOR 60% REVIEW	7-DEC-2007
ISSUED FOR 100% REVIEW	11-JAN-2008
ISSUED FOR TENDER	18-JAN-2008

PROVINCE OF MANITOBA  
NUMBER TEN ARCHITECTURAL GROUP  
No. 010  
PARTNERSHIP OF CONTRACTORS  
PROVINCE OF MANITOBA  
BOUG HANNA  
REGISTERED ARCHITECT

DRAWN BY M.C.G.D. CHECKED BY D.H. APPROVED  
DATE 18-JAN-2008 USER APPROVAL

CITY OF WINNIPEG  
PLANNING, PROPERTY & DEVELOPMENT DEPARTMENT  
CIVIC ACCOMMODATIONS DIVISION  
300 - 65 GARRY ST. R3C 4K4

PROJECT  
BRONX PARK COMMUNITY CENTRE  
HOME OF GOOD NEIGHBOURS SENIOR CENTRE  
WINNIPEG, MANITOBA

SHEET TITLE  
MILLWORK DETAILS

SCALE AS SHOWN	PROJECT NO. PPAD 2006-065	SHEET NO. A-8.2
-------------------	------------------------------	--------------------

DRAWING SHEET SIZE: A0 (1189mm x 841mm) PLOT 1:1