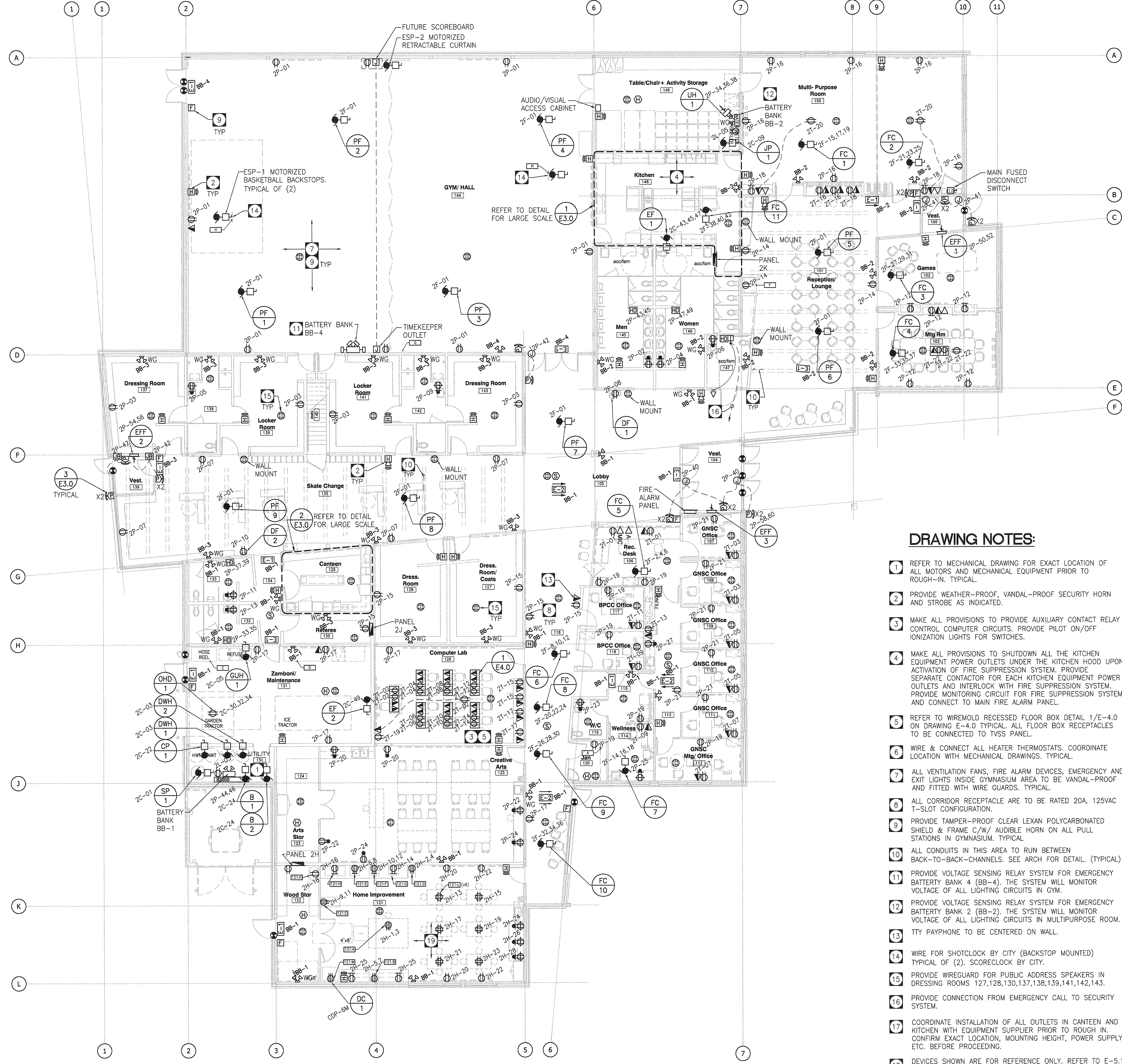


NOTES:  
 THIS DRAWING NOT BE SCALE.  
 THE CONTRACTOR SHALL VERIFY ALL DIMENSIONS, DATUMS AND LEVELS PRIOR TO COMMENCEMENT OF WORK. ALL ERRORS AND OMISSIONS TO BE REPORTED TO THE CONTRACT ADMINISTRATOR BEFORE PROCEEDING.  
 VARIATIONS AND MODIFICATIONS TO WORK SHOWN ON THESE DRAWINGS SHALL NOT BE CARRIED OUT WITHOUT WRITTEN PERMISSION OF THE CONTRACT ADMINISTRATOR.  
 THIS DRAWING IS THE EXCLUSIVE PROPERTY OF NUMBER TEN ARCHITECTURAL GROUP AND THE COPYRIGHT IN THE SAME BEING RESERVED TO THEM. IT MAY BE REPRODUCED ONLY WITH THE PERMISSION OF THE CITY OF WINNIPEG.

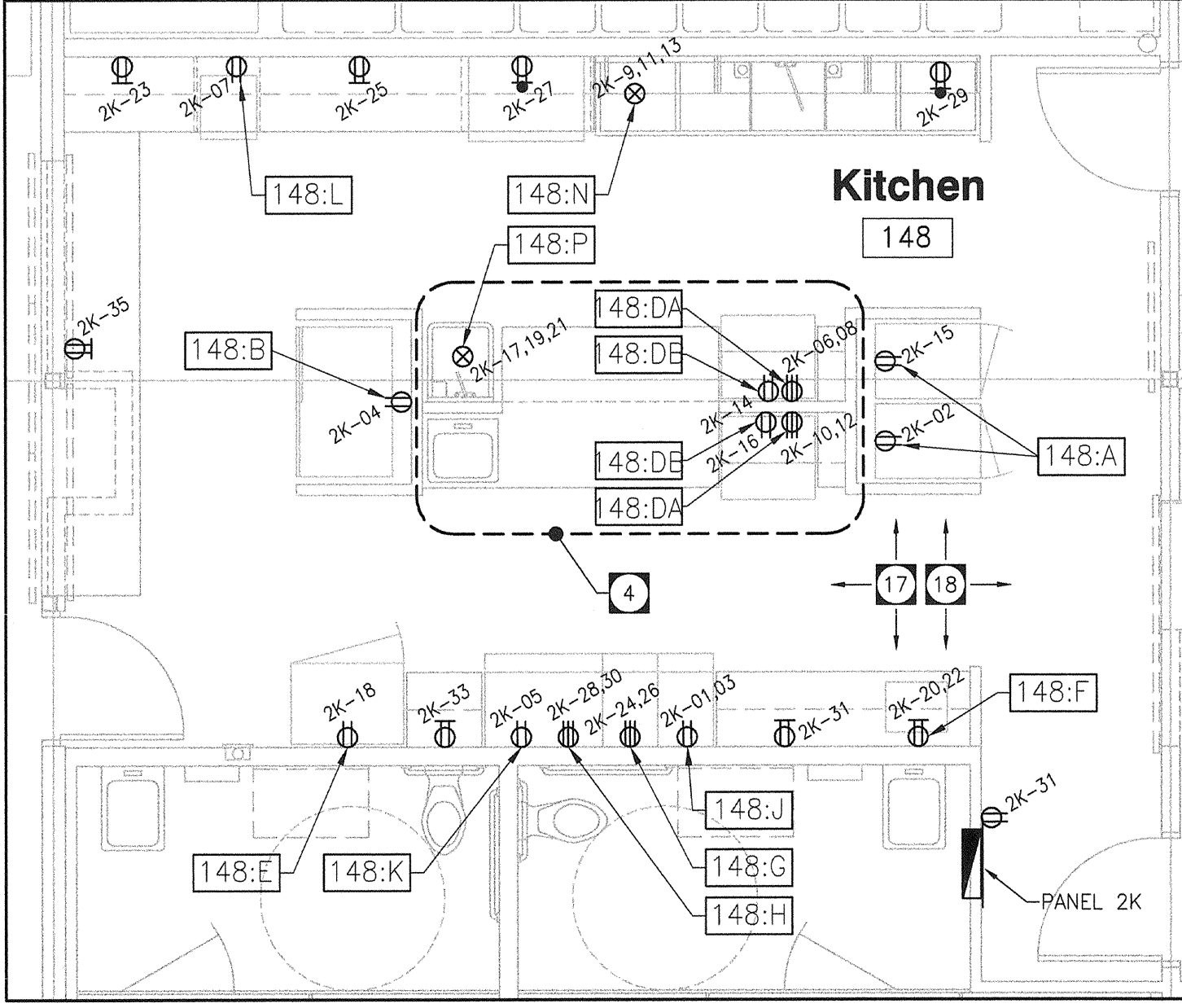
### EMERGENCY BATTERY BANK SCHEDULE

No.	MANUFACTURER	CATALOGUE NO.	INPUT VOLTS	OUTPUT VOLTS	SOURCE PANEL	QUANTITIES	MINIMUM WATTAGE x 1.25
EBB#1	LUMACELL	RG24S-720-2-MQM20W	120	24	PNL 2L	9	15 673 W
EBB#2	LUMACELL	RG24S-550-2-MQM20W	120	24	PNL 2L	3	9 508 W
EBB#3	LUMACELL	RG24S-720-2-MQM20W	120	24	PNL 2L	2	14 705 W
EBB#4	LUMACELL	RG24S350/4-DR1130-50W SHSPETD	120	24	PNL 2L	3 1 1	180 W

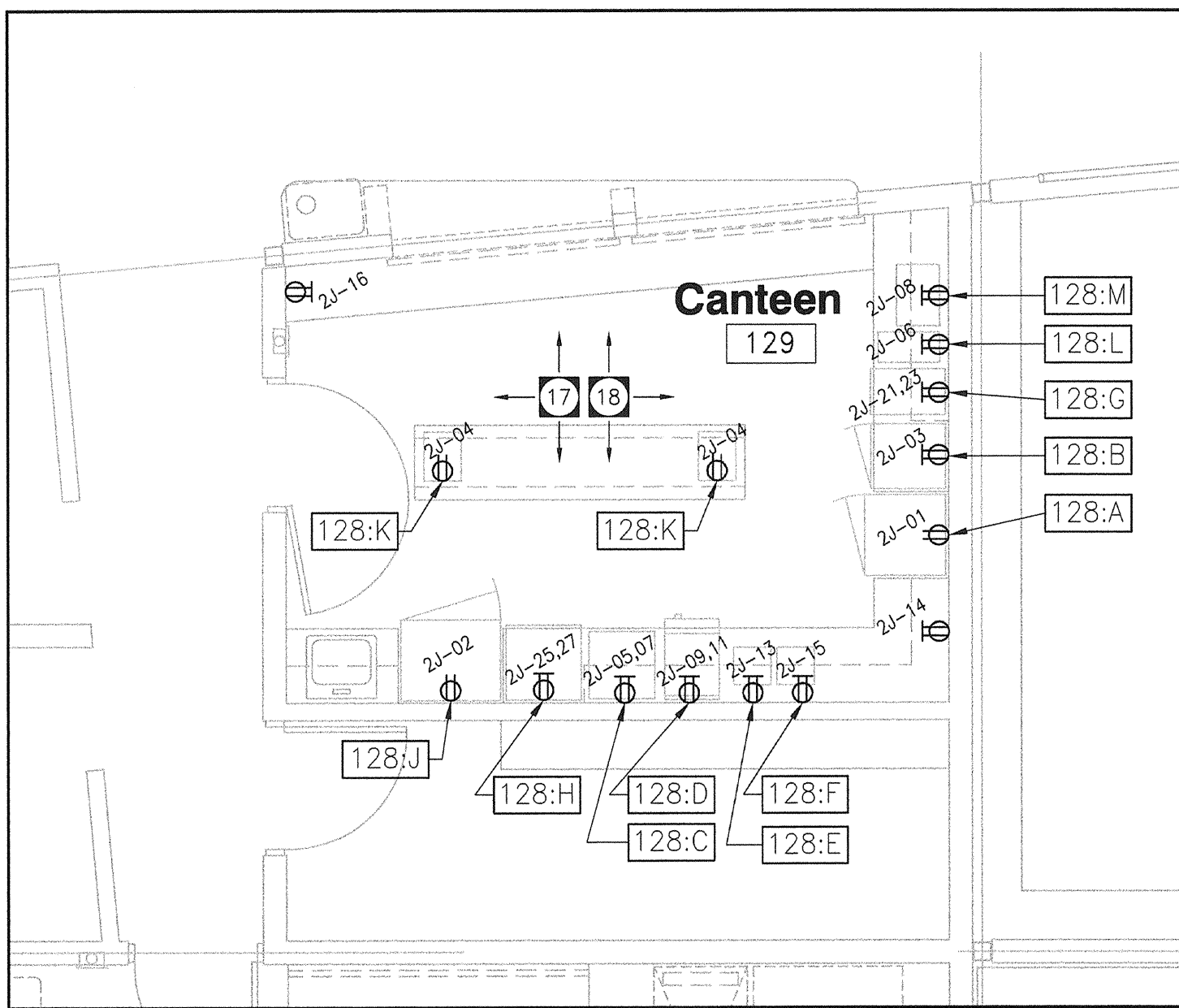
NOTES:  
 E-1 LUMACELL LMCE-UN  
 DR-2-130-WH-MR16-24V20W  
 DR1130-50W 24VDC



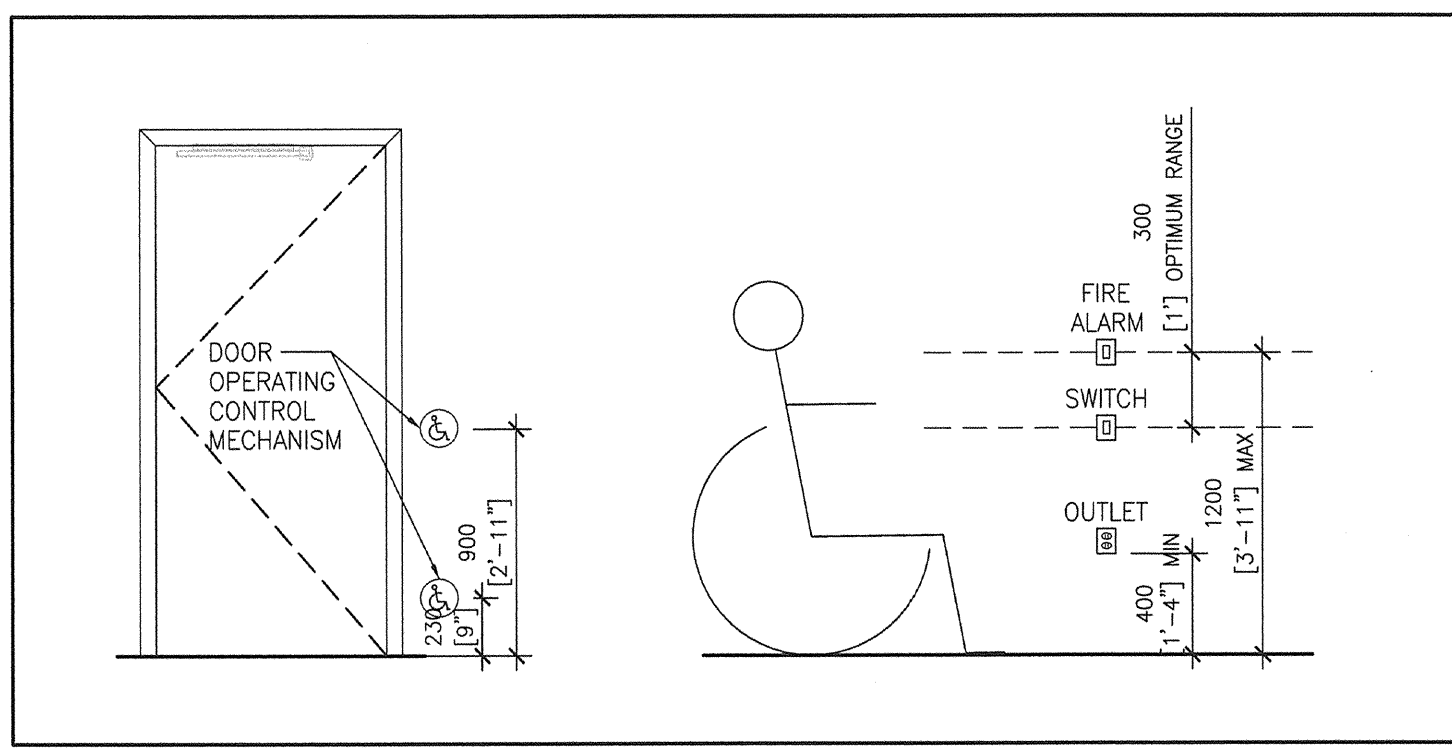
**MAIN FLOOR PLAN**  
 SCALE: 1:125



**1 LARGE SCALE KITCHEN PLAN**  
 E3.0 SCALE: 1:50



**2 LARGE SCALE CANTEN PLAN**  
 E3.0 SCALE: 1:50



**3 ACCESSIBLE CONTROLS DETAIL**  
 E3.0 SCALE: N.T.S.

**DRAWING NOTES:**

- 1 REFER TO MECHANICAL DRAWING FOR EXACT LOCATION OF ALL MOTORS AND MECHANICAL EQUIPMENT PRIOR TO ROUGH-IN. TYPICAL.
- 2 PROVIDE WEATHER-PROOF, VANDAL-PROOF SECURITY HORN AND STROBE AS INDICATED.
- 3 MAKE ALL PROVISIONS TO PROVIDE AUXILIARY CONTACT RELAY TO CONTROL COMPUTER CIRCUITS. PROVIDE PILOT ON/OFF IONIZATION LIGHTS FOR SWITCHES.
- 4 MAKE ALL PROVISIONS TO SHUTDOWN ALL THE KITCHEN EQUIPMENT POWER OUTLETS UNDER THE KITCHEN HOOD UPON ACTIVATION OF FIRE SUPPRESSION SYSTEM. PROVIDE SEPARATE CONTACTOR FOR EACH KITCHEN EQUIPMENT POWER OUTLETS AND INTERLOCK WITH FIRE SUPPRESSION SYSTEM. PROVIDE MONITORING CIRCUIT FOR FIRE SUPPRESSION SYSTEM AND CONNECT TO MAIN FIRE ALARM PANEL.
- 5 REFER TO WIREMOLD RECESSED FLOOR BOX DETAIL 1/2-4.0 ON DRAWING E-4.0 TYPICAL. ALL FLOOR BOX RECEPTACLES TO BE CONNECTED TO TVSS PANEL.
- 6 WIRE & CONNECT ALL HEATER THERMOSTATS. COORDINATE LOCATION WITH MECHANICAL DRAWINGS. TYPICAL.
- 7 ALL VENTILATION FANS, FIRE ALARM DEVICES, EMERGENCY AND EXIT LIGHTS INSIDE GYMNASIUM AREA TO BE VANDAL-PROOF AND FITTED WITH WIRE GUARDS. TYPICAL.
- 8 ALL CORRIDOR RECEPTACLE ARE TO BE RATED 20A, 125VAC T-SLOT CONFIGURATION.
- 9 PROVIDE TAMPER-PROOF CLEAR LEXAN POLYCARBONATED SHIELD & FRAME C/W/ AUDIBLE HORN ON ALL PULL STATIONS IN GYMNASIUM. TYPICAL.
- 10 ALL CONDUITS IN THIS AREA TO RUN BETWEEN BACK-TO-BACK-CHANNELS. SEE ARCH FOR DETAIL. (TYPICAL)
- 11 PROVIDE VOLTAGE SENSING RELAY SYSTEM FOR EMERGENCY BATTERY BANK 4 (BB-4). THE SYSTEM WILL MONITOR VOLTAGE OF ALL LIGHTING CIRCUITS IN GYM.
- 12 PROVIDE VOLTAGE SENSING RELAY SYSTEM FOR EMERGENCY BATTERY BANK 2 (BB-2). THE SYSTEM WILL MONITOR VOLTAGE OF ALL LIGHTING CIRCUITS IN MULTIPURPOSE ROOM. TTY PAYPHONE TO BE CENTERED ON WALL.
- 13
- 14 WIRE FOR SHOTCLOCK BY CITY (BACKSTOP MOUNTED) TYPICAL OF (2). SCORECLOCK BY CITY.
- 15 PROVIDE WIREGUARD FOR PUBLIC ADDRESS SPEAKERS IN DRESSING ROOMS 127,128,130,131,136,139,141,142,143.
- 16 PROVIDE CONNECTION FROM EMERGENCY CALL TO SECURITY SYSTEM.
- 17 COORDINATE INSTALLATION OF ALL OUTLETS IN CANTEN AND KITCHEN WITH EQUIPMENT SUPPLIER PRIOR TO ROUGH IN. CONFIRM EXACT LOCATION, MOUNTING HEIGHT, POWER SUPPLY, ETC. BEFORE PROCEEDING.
- 18 DEVICES SHOWN ARE FOR REFERENCE ONLY. REFER TO E-5.1 AND ARCH A-9.1 FOR LIST OF EQUIPMENT, N.I.C. TYPICAL.
- 19 CO-ORDINATE ALL LOCATIONS AND POWER REQUIREMENTS PRIOR TO ROUGH-IN.

TOWER PROJECT NO. : 6150

**TOWER ENGINEERING GROUP**  
 208 - 897 CORTROD AVE. WINNIPEG, MB. R3M 0W7  
 TEL: (204) 925-1150 FAX: (204) 925-1155  
 EMAIL: towereng@towereng.ca WEB: www.towereng.ca

**numberTEN architectural group**  
 Winnipeg, MB 204 942-0981  
 Toronto, ON 416 463-2106

architecture • interior design • graphic design

NO.	REVISION/ISSUED/PLOTTED	DATE
1	DESIGN DEVELOPMENT SUBMISSION	31/AUG/07
2	ISSUED FOR 40% REVIEW	28/OCT/07
3	ISSUED FOR 80% REVIEW	07/DEC/07
4	ISSUED FOR 100% REVIEW	11/JAN/08
5	ISSUED FOR TENDER	18/JAN/08

NO.	REVISION/DESCRIPTION	BY	DATE

SEALS

PROVINCE OF MANITOBA  
 REGISTERED PROFESSIONAL ENGINEER

**APEGM**  
 Certificate of Authorization  
 Tower Engineering Group  
 No. 1918. Expiry: April 30, 2008

DRAWN BY: [Signature] CHECKED BY: [Signature] APPROVED: [Signature]  
 DATE: 2007.08.28 USER APPROVAL

CITY OF WINNIPEG  
 PLANNING, PROPERTY AND  
 DEVELOPMENT DEPARTMENT  
 CIVIC ACCOMMODATIONS DIVISION  
 300 - 65 GARRY ST. R3C 4K4

PROJECT  
**BRONX PARK COMMUNITY CENTRE**  
**HOME OF GOOD NEIGHBOURS SENIOR CENTRE**  
 WINNIPEG, MB.

SHEET TITLE  
**ELECTRICAL**  
**MAIN FLOOR PLAN**  
**POWER & SYSTEM**