

NOTES :

THIS DRAWING MUST NOT BE SCALED.

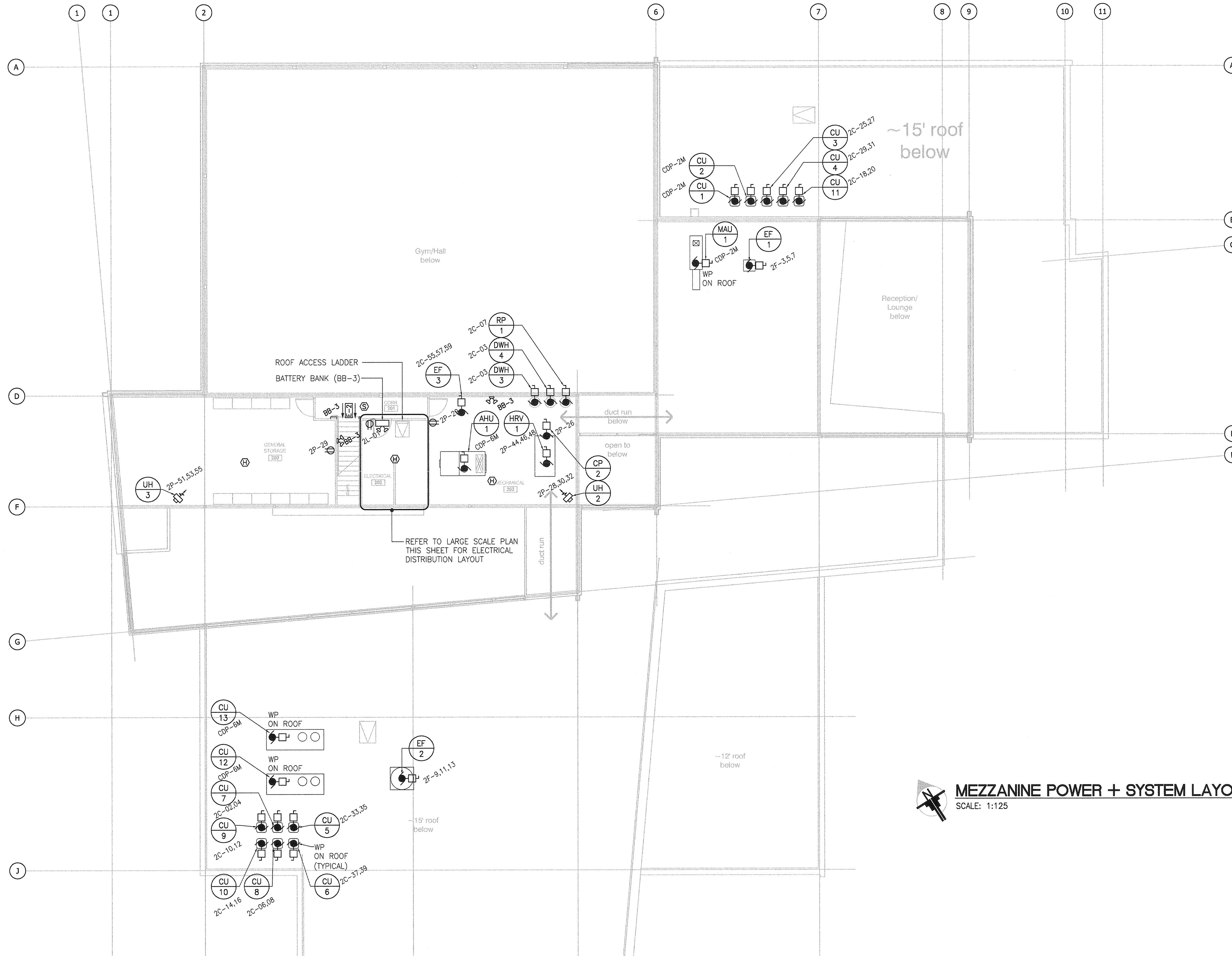
THE CONTRACTOR SHALL VERIFY ALL DIMENSIONS, DATUMS, AND LEVELS PRIOR TO COMMENCEMENT OF WORK. ALL ERRORS AND OMISSIONS TO BE REPORTED TO THE CONTRACT ADMINISTRATOR BEFORE PROCEEDING.

WORKINGS AND MODIFICATIONS TO WORK SHOWN ON THESE DRAWINGS SHALL NOT BE CARRIED OUT WITHOUT WRITTEN PERMISSION OF THE CONTRACT ADMINISTRATOR.

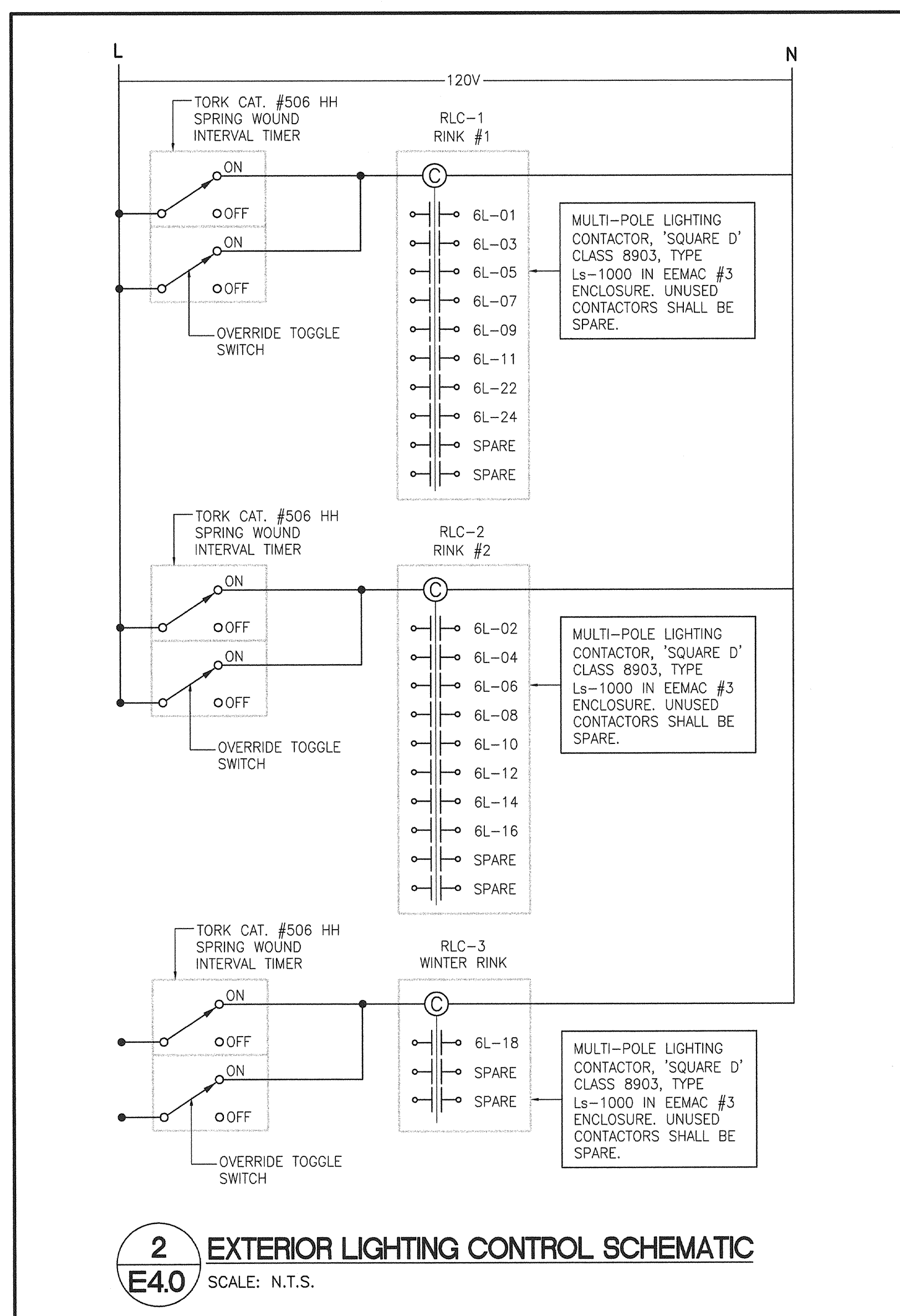
THIS DRAWING IS THE EXCLUSIVE PROPERTY OF NUMBER TEN ARCHITECTURAL GROUP AND THE COPYRIGHT IN THE SAME SHALL REMAIN TO THEM. IT MAY BE REPRODUCED ONLY WITH THE PERMISSION OF THE CITY OF WINNIPEG.



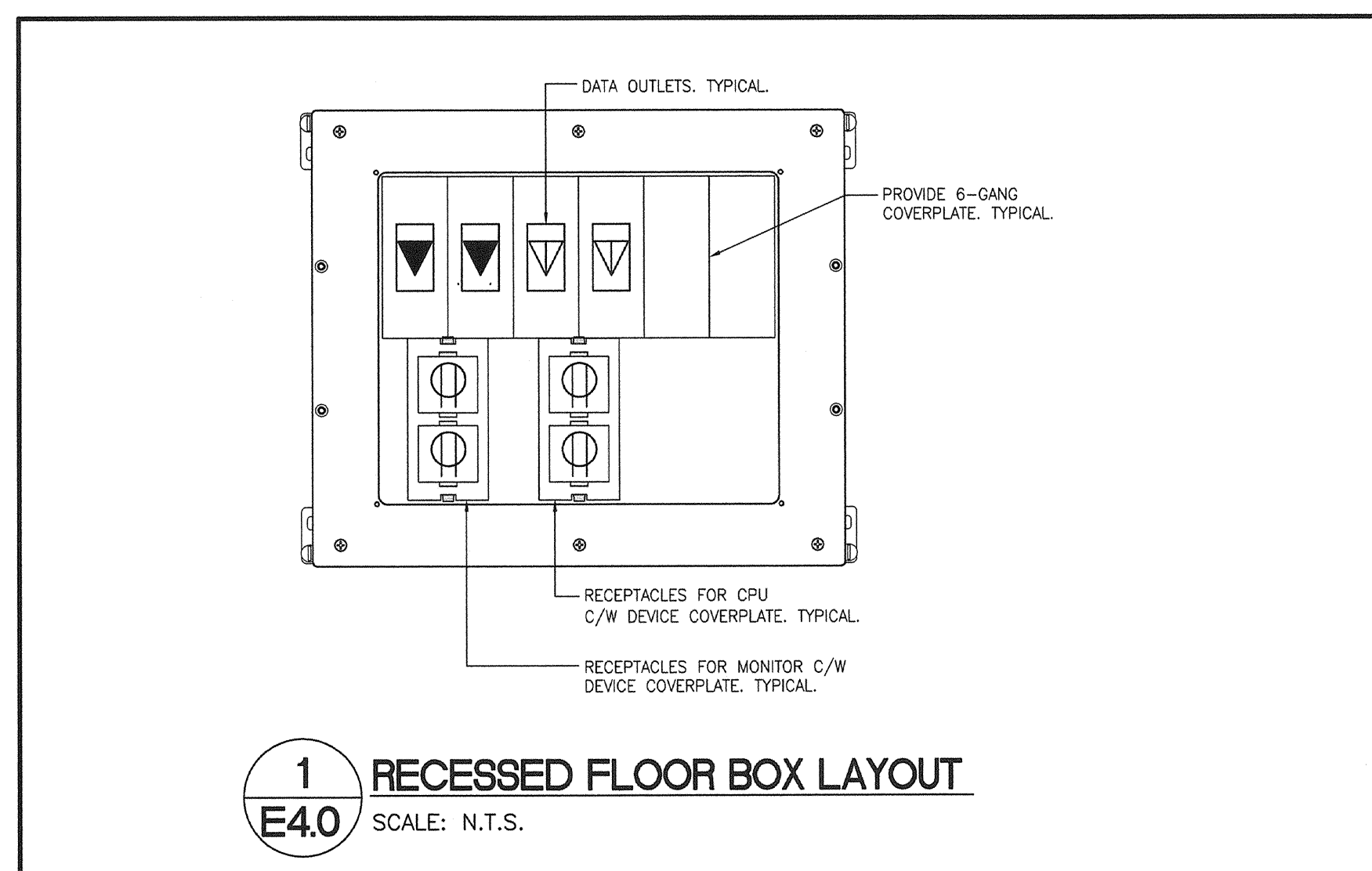
**MEZZANINE LIGHTING LAYOUT**  
SCALE: 1:125



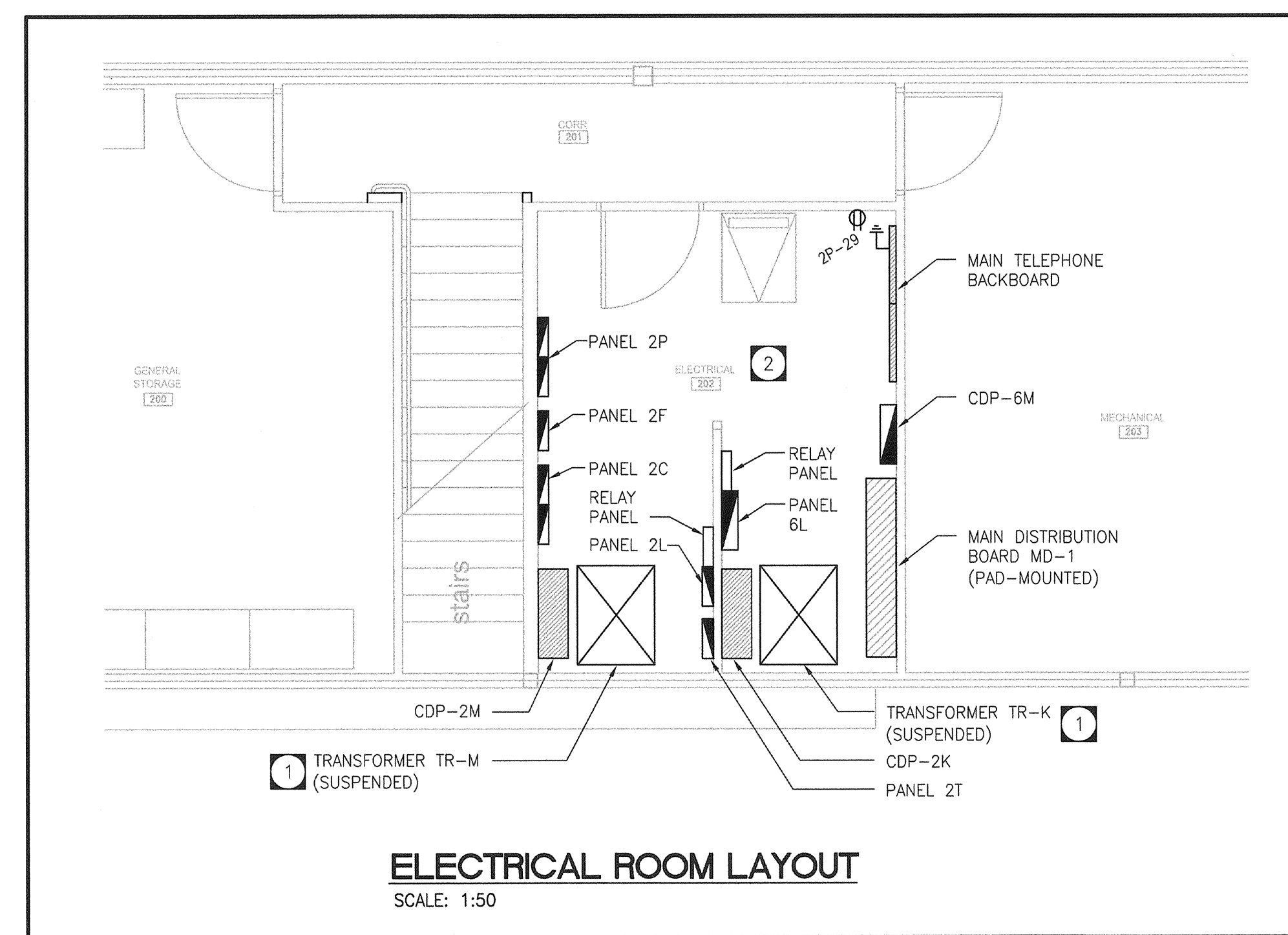
**MEZZANINE POWER + SYSTEM LAYOUT**  
SCALE: 1:125



**2 EXTERIOR LIGHTING CONTROL SCHEMATIC**  
E4.0 SCALE: N.T.S.



**1 RECESSED FLOOR BOX LAYOUT**  
E4.0 SCALE: N.T.S.



**ELECTRICAL ROOM LAYOUT**  
SCALE: 1:50

**DRAWING NOTES:**

1 TRANSFORMERS TR-K AND TR-M ARE TO BE SUSPENDED FROM ROOF JOIST. PROVIDE ALL REQUIRED SUPPORTS.

2 PROVIDE FINAL ELECTRICAL ROOM LAYOUT FOR APPROVAL.

TOWER PROJECT NO. : 6150

**TOWER ENGINEERING GROUP**  
208 - 287 CORTOON AVE. WINNIPEG, MB R3M 0W7  
TEL: (204) 925-1150 FAX: (204) 925-1155  
EMAIL: towereng@towereng.ca WEB: www.towereng.ca

**numberTEN architectural group**  
Winnipeg, MB 204 942-0981 Victoria, BC 250 360-5106

architecture • interior design • graphic design

NO.	REVISION/ISSUED/PLUTED	DATE
▲	DESIGN DEVELOPMENT SUBMISSION	31/AUG/07
▲	ISSUED FOR 40% REVIEW	28/OCT/07
▲	ISSUED FOR 80% REVIEW	07/DEC/07
▲	ISSUED FOR 100% REVIEW	11/JAN/08
▲	ISSUED FOR TENDER	18/JAN/08

NO. \_\_\_\_\_ REVISION/DESCRIPTION \_\_\_\_\_ BY \_\_\_\_\_ DATE \_\_\_\_\_

SEALS

**PROVINCE OF MANITOBA**  
**TONTATH**  
REGISTERED PROFESSIONAL ENGINEER  
JAN 18/08

**APEGM**  
Certificate of Authorization  
Tower Engineering Group  
No. 1918 Expiry: April 30, 2008

DRAWN BY: [initials] CHECKED BY: [initials] APPROVED: [initials]

DATE: 2007.08.28 USER APPROVAL

Winnipeg CITY OF WINNIPEG  
PLANNING, PROPERTY AND  
DEVELOPMENT DEPARTMENT  
CIVIC ACCOMMODATIONS DIVISION  
300 - 65 GARRY ST. R3C 4K4

PROJECT  
**BRONX PARK COMMUNITY CENTRE**  
**HOME OF**  
**GOOD NEIGHBOURS SENIOR CENTRE**  
WINNIPEG, MB.

SHEET TITLE  
**ELECTRICAL MEZZANINE PLAN**  
DETAILS, LIGHTING,  
POWER & SYSTEM

SCALE: AS SHOWN PROJECT NO: PP&D 2006-065 SHEET NO: E-4.0

DRAWING SHEET SIZE: ARCH E1 (42" x 30") PLOT 1:1