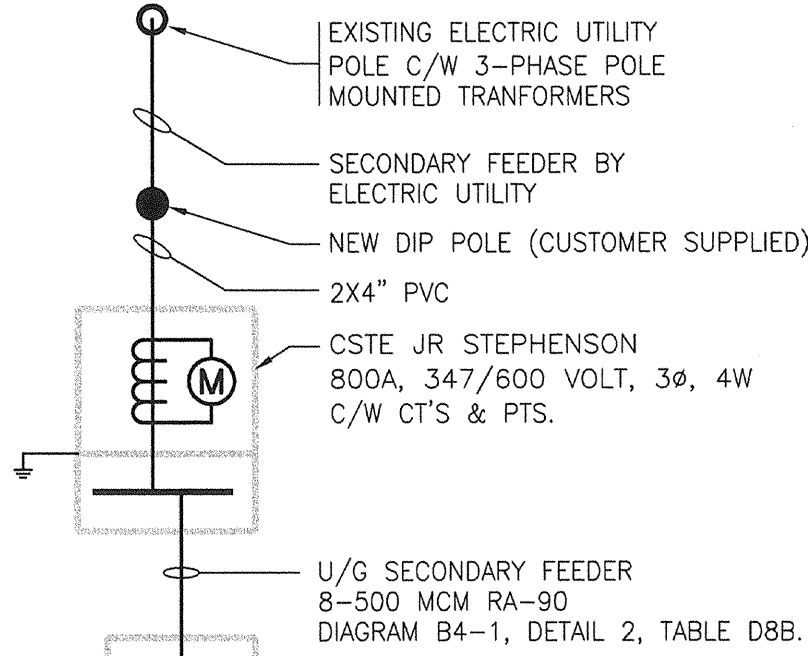
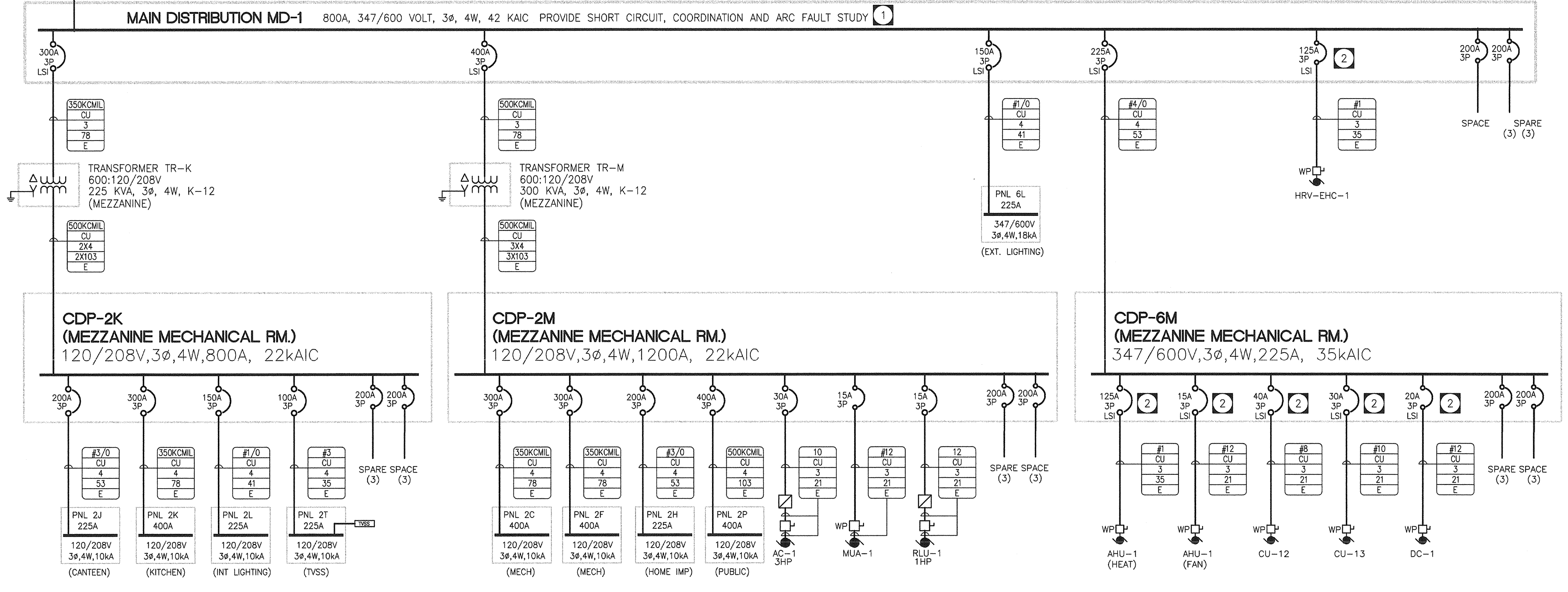


LOAD SUMMARY table with columns: MAIN, TRANSFORMER, CDP, PANEL/LOAD, PHASE, HEAT (kW), LIGHT (kW), MOTOR/HVAC (kW), MISC (kW), TOTAL (kW). Includes sub-totals for TR-M and CDP-6M.



DRAWING NOTES: 1. PROVIDE A COMPLETE SHORT CIRCUIT, COORDINATION AND ARC FAULT STUDY... 2. SIZE BREAKER AND FEEDER IN ACCORDANCE TO FINAL NAMEPLATE RATINGS... 3. REFER TO MECHANICAL DRAWINGS & SPECS FOR INTERLOCKING DETAILS...

FEEDER TAG LEGEND: #6 - MINIMUM CONDUCTOR SIZE: RW90; CU - COPPER & AL - ALUMINUM; NO. OF CONDUCTORS; CONDUIT SIZE (MM); E - EMT CONDUIT; PVC - PVC CONDUIT; R - RIGID STEEL CONDUIT; T - TEE; A - ACWU; RA - RAGO



MOTOR/EQUIPMENT SCHEDULE table listing items (AHU-1, AC-1, RLV-1, etc.), descriptions, locations, kW/HP/AMPS, voltages, feeders, and control types (MC, MC, EC, etc.).

SINGLE LINE DIAGRAM NOTES

OWNER SUPPLIED EQUIPMENT SCHEDULE

OWNER SUPPLIED EQUIPMENT SCHEDULE table listing equipment like Canteen Equipment (610mm wide commercial cooler, fryer, etc.) and Kitchen Equipment (refrigerators, freezers, etc.).

HOME IMPROV. SHOP EQUIPMENT:

HOME IMPROV. SHOP EQUIPMENT table listing items like Table Saw, Sliding Mitre Saw, Band Saw, Drill Press, etc.

GENERAL NOTES: A. MANUAL MOTOR STARTER TO BE C/W PILOT LIGHT AND OVERCURRENT PROTECTION. B. ALL STARTERS TO BE SUPPLIED & INSTALLED BY THE ELECTRICAL CONTRACTOR (EC) UNLESS OTHERWISE NOTED.

GENERAL NOTES: A. MANUAL MOTOR STARTER TO BE C/W PILOT LIGHT AND OVERCURRENT PROTECTION. B. ALL STARTERS TO BE SUPPLIED & INSTALLED BY THE ELECTRICAL CONTRACTOR (EC) UNLESS OTHERWISE NOTED.

NOTES: THE DRAWING MUST NOT BE SCALED. THE CONTRACTOR SHALL VERIFY ALL DIMENSIONS, DATUMS, AND LEVELS FROM THE COMMENCEMENT OF WORK. ALL ERRORS AND OMISSIONS TO BE REPORTED TO THE CONTRACT ADMINISTRATOR BEFORE PROCEEDING.

WARNINGS AND MODIFICATIONS TO WORK SHOWN ON THESE DRAWINGS SHALL NOT BE CARRIED OUT WITHOUT WRITTEN PERMISSION OF THE CONTRACT ADMINISTRATOR. THIS DRAWING IS THE EXCLUSIVE PROPERTY OF NUMBER TEN ARCHITECTURAL GROUP AND THE COPYRIGHT IN THE SAME SHALL BE RESERVED TO THEM. IT MAY BE REPRODUCED ONLY WITH THE PERMISSION OF THE CITY OF WINNIPEG.

TOWER PROJECT NO.: 6150

TOWER ENGINEERING GROUP logo and contact information: 200 - 857 GERRARD AVE., WINNIPEG, MB. TEL: (204) 925-1150. FAX: (204) 925-1153.

numberTEN architectural group logo with 'number 10' branding and tagline 'architecture • interior design • graphic design'.

Revision table with columns: NO., REVISION/DESCRIPTION, BY, DATE. Shows revisions from 1 to 10.

Professional Engineer seal for T. V. ... and APEGM Certificate of Authorization for Tower Engineering Group, No. 1918, Expiry: April 30, 2008.

City of Winnipeg Planning, Property and Development Department Civic Accommodations Division. PROJECT: BRONX PARK COMMUNITY CENTRE HOME OF GOOD NEIGHBOURS SENIOR CENTRE.

SCALE: AS SHOWN. PROJECT NO.: PRD 2006-065. SHEET NO.: E-5.1. DRAWING SHEET SIZE: ARCH E1 (42" x 30") PLOT 1:1