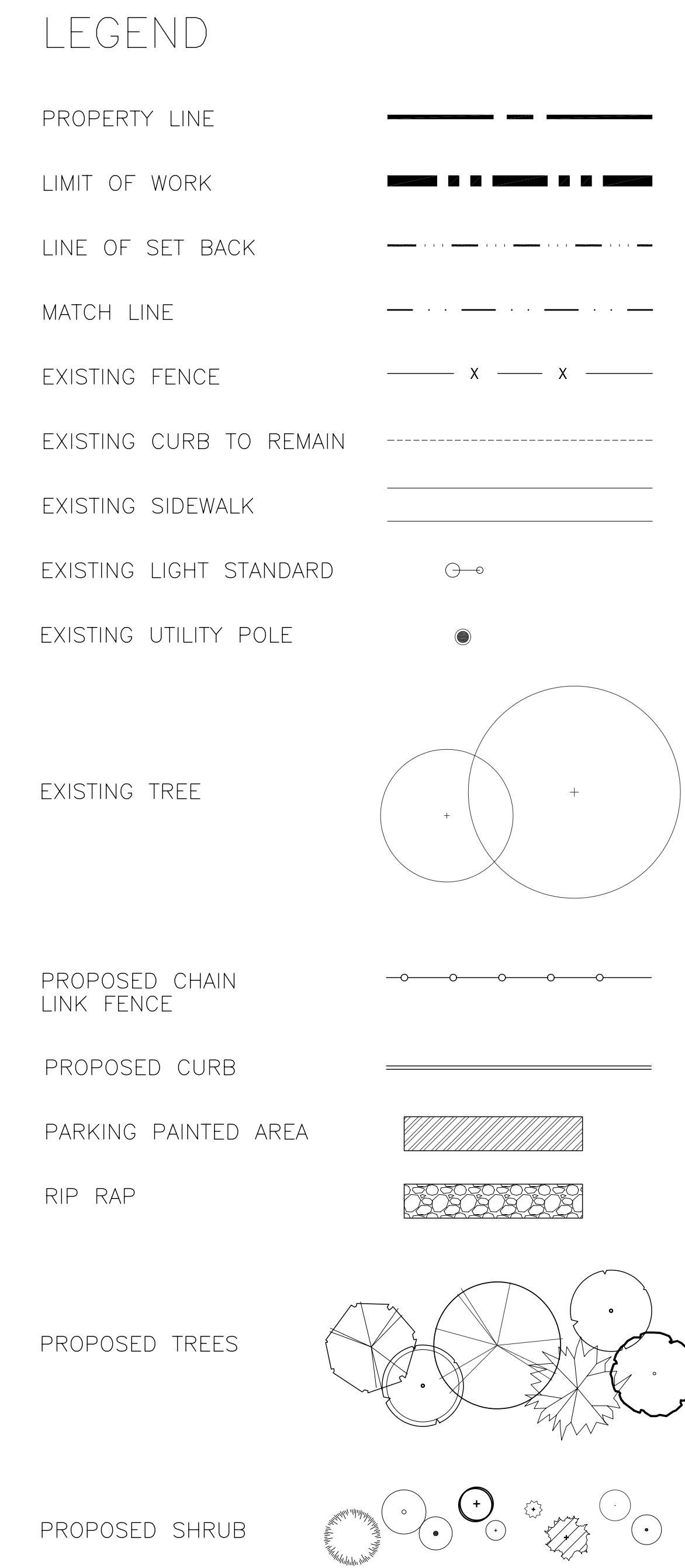
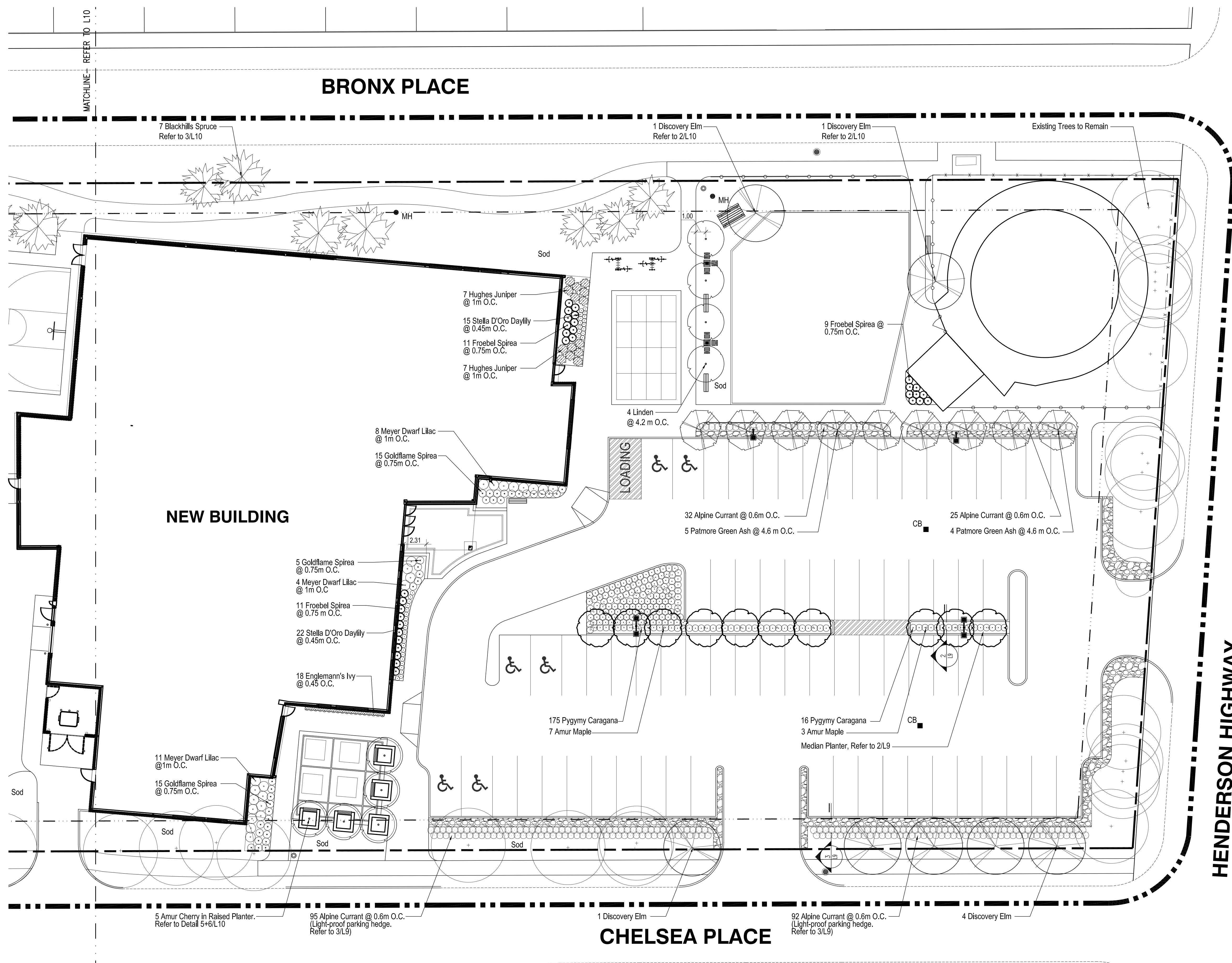


FILE NAME: 7026-Bronx-Tender.dwg
 DATE: 18-JAN-2008
 DESCRIPTION: L9-PLANTING-A
 PROJECT No.: PRD 2006-065
 ADDRESS: WINNIPEG, MANITOBA



NOTES:
 THIS DRAWING MUST NOT BE SCALED.
 THE CONTRACTOR SHALL VERIFY ALL DIMENSIONS, DATUMS, AND LEVELS PRIOR TO COMMENCEMENT OF WORK. ALL ERRORS AND OMISSIONS TO BE REPORTED TO THE CONTRACT ADMINISTRATOR BEFORE PROCEEDING.
 VARIATIONS AND MODIFICATIONS TO WORK SHOWN ON THESE DRAWINGS SHALL NOT BE CARRIED OUT WITHOUT WRITTEN PERMISSION OF THE CONTRACT ADMINISTRATOR.
 THIS DRAWING IS THE EXCLUSIVE PROPERTY OF NUMBER TEN ARCHITECTURAL GROUP AND THE COPYRIGHT IN THE SAME BEING RESERVED TO THEM. IT MAY BE REPRODUCED ONLY WITH THE PERMISSION OF THE CITY OF WINNIPEG.

**CONFIDENTIAL
 DO NOT COPY**

SCATLIFF+MILLER+MURRAY
 landscape architecture urban design golf course design bridge architecture 3d simulation
 Winnipeg BC Calgary Beijing
 Tel: 204.952.3444 Fax: 204.952.3443

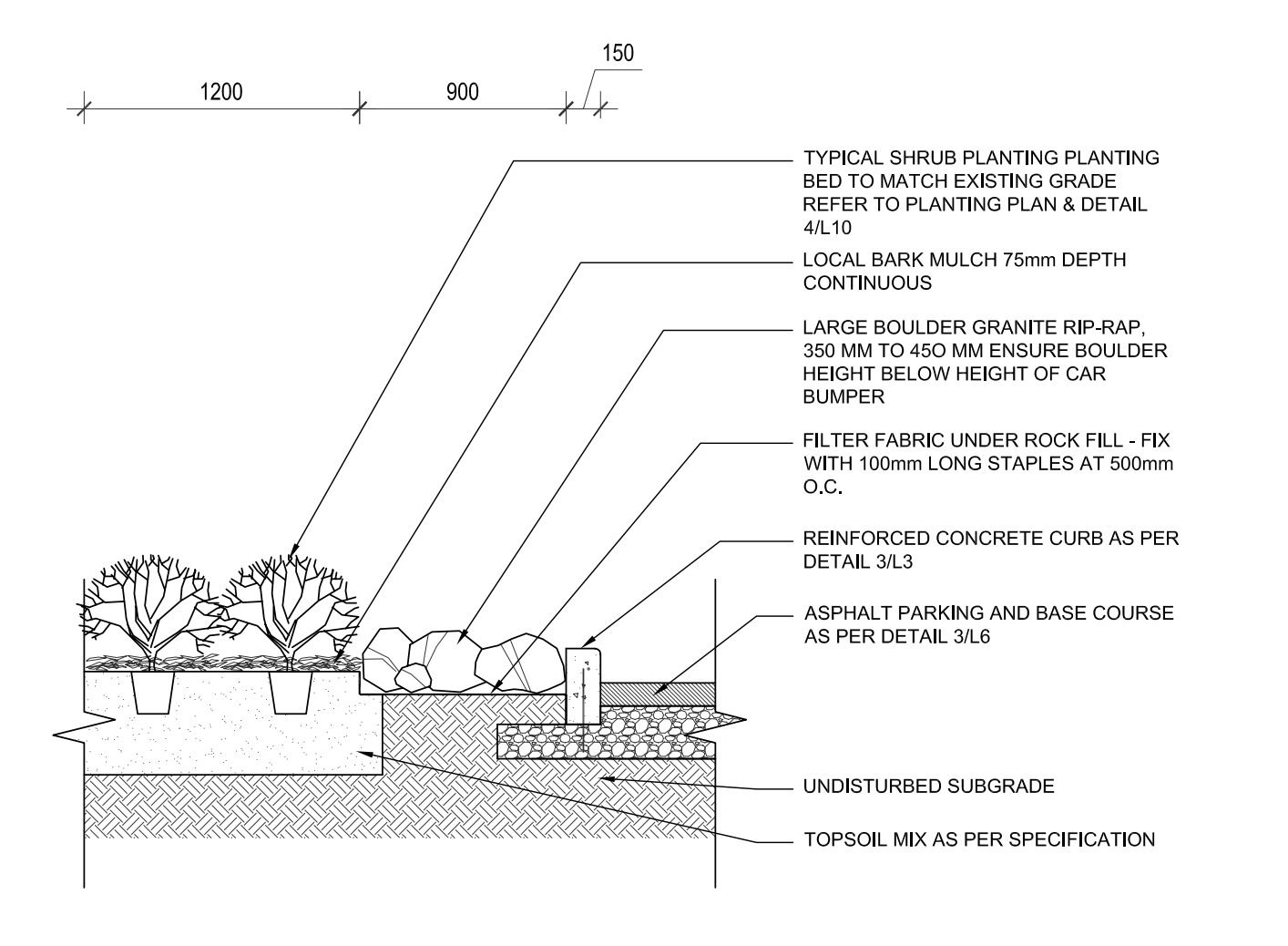
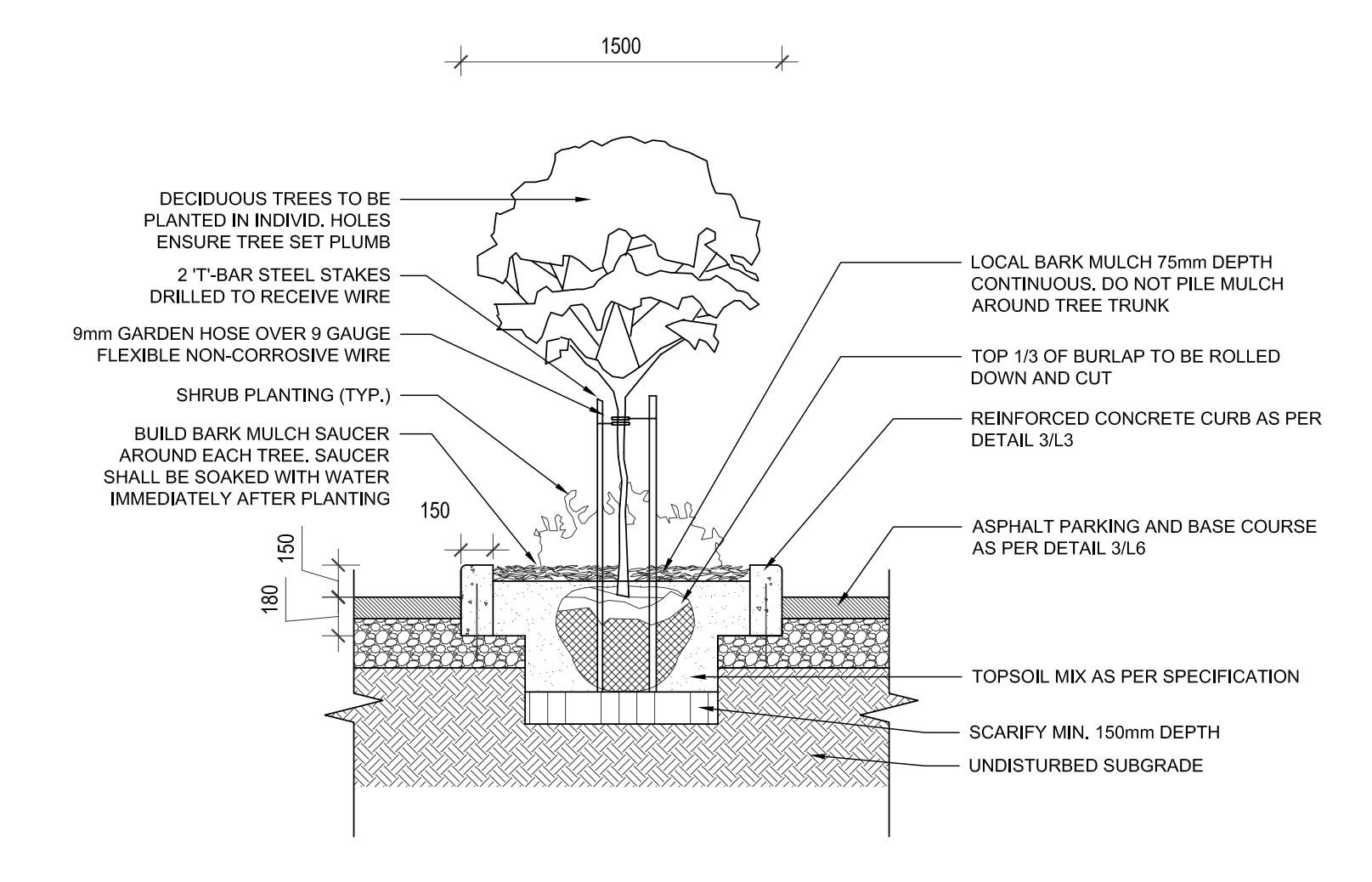
numberTEN
 architectural group
 Winnipeg MB Victoria BC
 204.942.0981 250.360.2106

architecture • interior design • graphic design

NO.	REVISION/ISSUE/PLOTTED	DATE
1	ISSUED FOR 40% REVIEW	26-OCT-2007
2	ISSUED FOR 80% REVIEW	7-DEC-2007
3	ISSUED FOR 100% REVIEW	11-JAN-2008
4	ISSUED FOR TENDER	18-JAN-2008
5		
6		

NO.	REVISION/DESCRIPTION	BY	DATE

1
L9 PLANTING PLAN A
 SCALE 1:200



2
L9 MEDIAN PLANTER
 SCALE 1:30

3
L9 LIGHT-PROOF PARKING HEDGE
 SCALE 1:30

PLANT SCHEDULE

QTY.	BOTANICAL NAME	COMMON NAME	SUPPLY SIZE	SPACING
DECIDUOUS TREES				
9	<i>Fraxinus pennsylvanica</i> 'Patmore'	Patmore Green Ash	Standard Shade Tree - 60mm Caliper, Min. ht. 4500mm, Branching ht. 1800mm, Balled and Burlapped	AS SHOWN
10	<i>Acer ginnala</i>	Amur Maple	Standard Shade Tree - 60mm Caliper, Min. ht. 4500mm, Branching ht. 1800mm, Balled and Burlapped	AS SHOWN
4	<i>Tilia mongolica</i> 'Harvest Gold'	Linden	Standard Shade Tree - 60mm Caliper, Min. ht. 4500mm, Branching ht. 1800mm, Balled and Burlapped	AS SHOWN
5	<i>Prunus maackii</i>	Amur Cherry	Standard Shade Tree - 50mm Caliper, Min. ht. 3000mm, Branching ht. 1500mm, Balled and Burlapped	AS SHOWN
7	<i>Ulmus davidiana japonica</i> 'Discovery'	Discovery Elm	Standard Shade Tree - 50mm Caliper, Min. ht. 3000mm, Branching ht. 1500mm, Balled and Burlapped	AS SHOWN
CONIFEROUS TREES				
11	<i>Picea glauca</i> 'Densata'	BlackHills Spruce	Min. ht. 2500mm, 900mm base width, Min. 900mm wide rootball, single upright leader, straight trunk, well branched, full form	AS SHOWN

SHRUBS & PERENNIALS

NO.	BOTANICAL NAME	COMMON NAME	CONTAINER SIZE	SPACING
14	<i>Juniperus horizontalis</i> 'Hughes'	Hughes Juniper	2 Gallon Container, 300-400mm ht.	1000mm o.c.
23	<i>Syringa meyeri</i> 'Palbin'	Meyer Dwarf Lilac	2 Gallon Container, 300-400mm ht.	1000mm o.c.
31	<i>Spiraea x bumalda</i> 'Froebelii'	Froebel Spirea	#2 Container, 190-230mm dia.	750mm o.c.
35	<i>Spiraea x bumalda</i> 'Goldflame'	Goldflame Spirea	#2 Container, 190-230mm dia.	750mm o.c.
191	<i>Caragana pygmaea</i>	Pygmy Caragana	#2 Container, 190-230mm dia.	600mm o.c.
244	<i>Ribes alpinum</i>	Alpine Current	#2 Container, 190-230mm dia.	600mm o.c.
37	<i>Hemerocallis</i> 'Stella D'Oro'	Stella D'Oro Daylily	#1 Container, 150-180mm dia.	450mm o.c.
18	<i>Parthenocissus quinquefolia</i> 'Englemanni'	Englemann's Ivy	#1 Container, 150-180mm dia.	450mm o.c.

DRAWN BY: [Signature] CHECKED BY: [Signature] APPROVED: [Signature]
 DATE: 18-JAN-2008 USER APPROVAL

Winnipeg CITY OF WINNIPEG PLANNING, PROPERTY AND DEVELOPMENT DEPARTMENT CIVIC ACCOMMODATIONS DIVISION 300 - 65 GARRY ST. R3C 4K4

PROJECT: BRONX PARK COMMUNITY CENTRE HOME OF GOOD NEIGHBOURS SENIOR CENTRE WINNIPEG, MANITOBA

SHEET TITLE: PLANTING PLAN - A