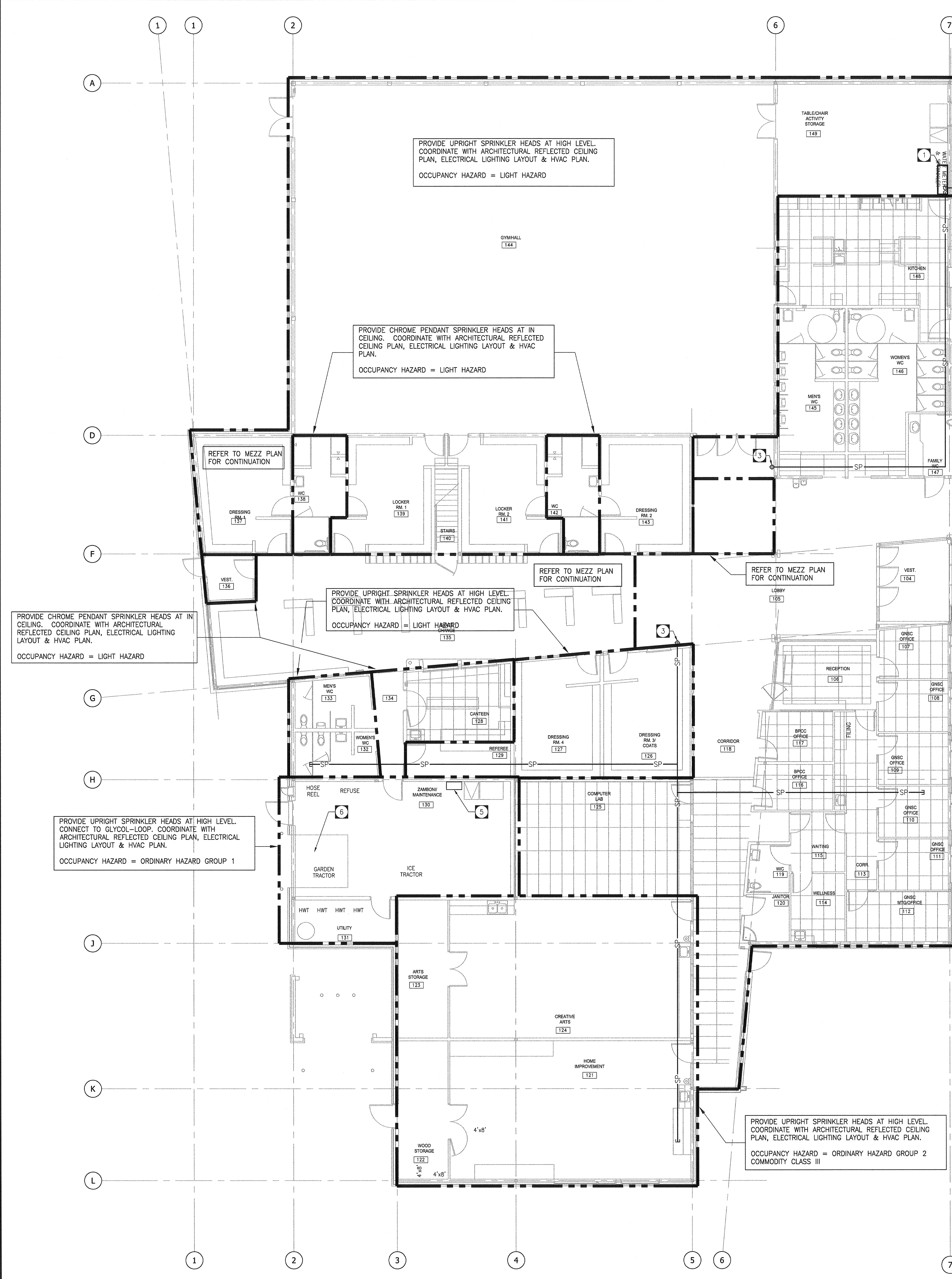
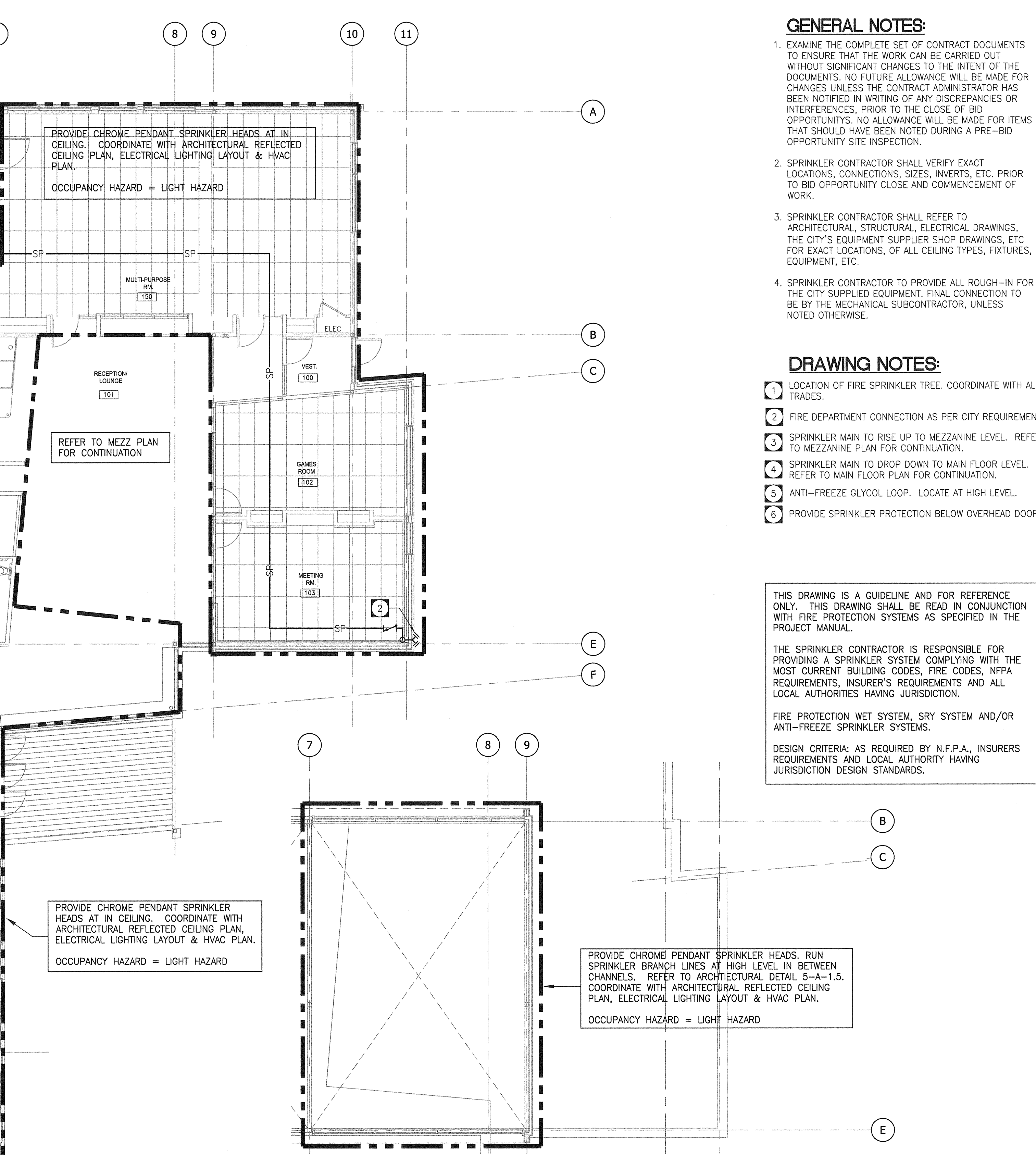


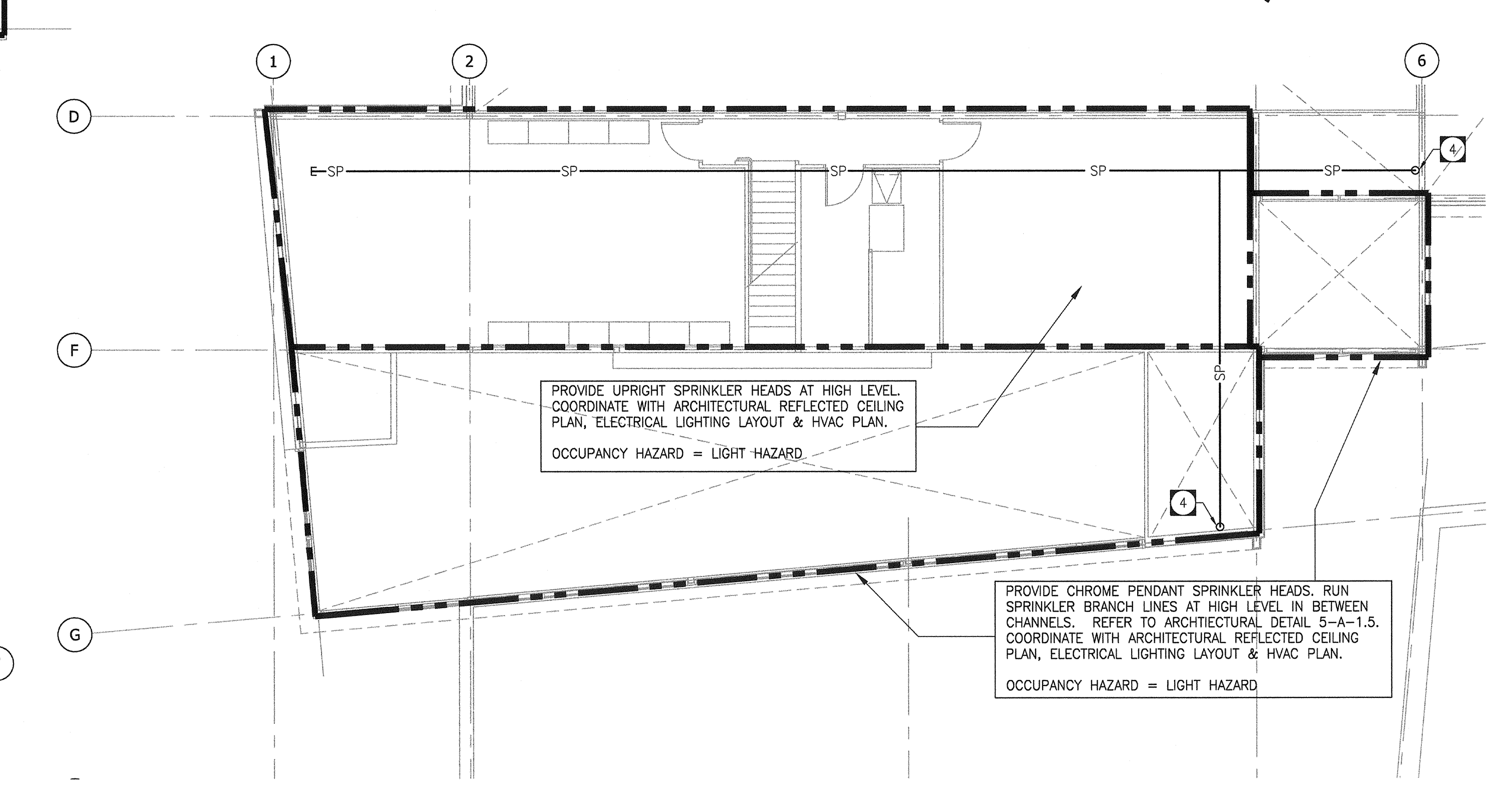
FILE NAME: 6150 M-5.1 fire.dwg DATE: 2007.11.12 PROJECT No.: PP&D 2006-065 ADDRESS: WINNIPEG, MANITOBA



1 MAIN FLOOR PLAN - FIRE PROTECTION
M-5.1 SCALE: 1:100



2 MEZZANINE FLOOR PLAN - FIRE PROTECTION
M-5.1 SCALE: 1:100



2 MEZZANINE FLOOR PLAN - FIRE PROTECTION
M-5.1 SCALE: 1:100

GENERAL NOTES:

- EXAMINE THE COMPLETE SET OF CONTRACT DOCUMENTS TO ENSURE THAT THE WORK CAN BE CARRIED OUT WITHOUT SIGNIFICANT CHANGES TO THE INTENT OF THE DOCUMENTS. NO FUTURE ALLOWANCE WILL BE MADE FOR CHANGES UNLESS THE CONTRACT ADMINISTRATOR HAS BEEN NOTIFIED IN WRITING OF ANY DISCREPANCIES OR INTERFERENCES, PRIOR TO THE CLOSE OF BID OPPORTUNITIES. NO ALLOWANCE WILL BE MADE FOR ITEMS THAT SHOULD HAVE BEEN NOTED DURING A PRE-BID OPPORTUNITY SITE INSPECTION.
- SPRINKLER CONTRACTOR SHALL VERIFY EXACT LOCATIONS, CONNECTIONS, SIZES, INVERTS, ETC. PRIOR TO BID OPPORTUNITY CLOSE AND COMMENCEMENT OF WORK.
- SPRINKLER CONTRACTOR SHALL REFER TO ARCHITECTURAL, STRUCTURAL, ELECTRICAL DRAWINGS, THE CITY'S EQUIPMENT SUPPLIER SHOP DRAWINGS, ETC FOR EXACT LOCATIONS, OF ALL CEILING TYPES, FIXTURES, EQUIPMENT, ETC.
- SPRINKLER CONTRACTOR TO PROVIDE ALL ROUGH-IN FOR THE CITY SUPPLIED EQUIPMENT. FINAL CONNECTION TO BE BY THE MECHANICAL SUBCONTRACTOR, UNLESS NOTED OTHERWISE.

DRAWING NOTES:

- LOCATION OF FIRE SPRINKLER TREE. COORDINATE WITH ALL TRADES.
- FIRE DEPARTMENT CONNECTION AS PER CITY REQUIREMENTS.
- SPRINKLER MAIN TO RISE UP TO MEZZANINE LEVEL. REFER TO MEZZANINE PLAN FOR CONTINUATION.
- SPRINKLER MAIN TO DROP DOWN TO MAIN FLOOR LEVEL. REFER TO MAIN FLOOR PLAN FOR CONTINUATION.
- ANTI-FREEZE GLYCOL LOOP. LOCATE AT HIGH LEVEL.
- PROVIDE SPRINKLER PROTECTION BELOW OVERHEAD DOOR.

THIS DRAWING IS A GUIDELINE AND FOR REFERENCE ONLY. THIS DRAWING SHALL BE READ IN CONJUNCTION WITH FIRE PROTECTION SYSTEMS AS SPECIFIED IN THE PROJECT MANUAL.

THE SPRINKLER CONTRACTOR IS RESPONSIBLE FOR PROVIDING A SPRINKLER SYSTEM COMPLYING WITH THE MOST CURRENT BUILDING CODES, FIRE CODES, NFPA REQUIREMENTS, INSURER'S REQUIREMENTS AND ALL LOCAL AUTHORITIES HAVING JURISDICTION.

FIRE PROTECTION WET SYSTEM, SRY SYSTEM AND/OR ANTI-FREEZE SPRINKLER SYSTEMS.

DESIGN CRITERIA: AS REQUIRED BY N.F.P.A., INSURERS REQUIREMENTS AND LOCAL AUTHORITY HAVING JURISDICTION DESIGN STANDARDS.

NOTES:

THIS DRAWING MUST BE SEALED.

THE CONTRACTOR SHALL VERIFY ALL DIMENSIONS, DETAILS, AND LEVELS PRIOR TO COMMENCEMENT OF WORK. ALL ERRORS AND OMISSIONS TO BE REPORTED TO THE CONTRACT ADMINISTRATOR BEFORE PROCEEDING.

VARIOUS AND MODIFICATIONS TO WORK SHOWN ON THESE DRAWINGS SHALL NOT BE CARRIED OUT WITHOUT WRITTEN PERMISSION OF THE CONTRACT ADMINISTRATOR.

THIS DRAWING IS THE EXCLUSIVE PROPERTY OF NUMBER TEN ARCHITECTURAL GROUP AND THE COPYRIGHT IN THE SAME BEING RESERVED TO THEM. IT MAY BE REPRODUCED ONLY WITH THE PERMISSION OF THE CITY OF WINNIPEG.

TOWER PROJECT NO.: 6150

TOWER ENGINEERING GROUP
208 - 257 CORYDON AVE. WINNIPEG, MB R3M 0W7
TEL: (204) 925-1150 FAX: (204) 925-1155
EMAIL: towereng@towereng.ca WEB: www.towereng.ca

numberTEN architectural group
Winipeg, MB 204 942-0981 Victoria, BC 250 365-2766

architecture • interior design • graphic design

NO.	REVISION/ISSUED/PLOTTED	DATE
1	DESIGN DEVELOPMENT SUBMISSION	31/AUG/07
2	ISSUED FOR 40% REVIEW	28/OCT/07
3	ISSUED FOR 80% REVIEW	07/DEC/07
4	ISSUED FOR 100% REVIEW	11/JAN/08
5	ISSUED FOR TENDER	18/JAN/08

NO. _____ REVISION/DESCRIPTION _____ BY _____ DATE _____

SEALS

PROVINCE OF MANITOBA
J. ABIUSI
Professional Engineer
No. 1918 Expiry: April 30, 2008

APEGM
Certificate of Authorization
Tower Engineering Group
No. 1918 Expiry: April 30, 2008

DRAWN BY: LR CHECKED BY: LR APPROVED
DATE: 2007.11.12 USER APPROVAL

CITY OF WINNIPEG
PLANNING, PROPERTY AND DEVELOPMENT DEPARTMENT
CIVIC ACCOMMODATIONS DIVISION
300 - 65 GARRY ST. R3C 4K4

PROJECT
BRONX PARK COMMUNITY CENTRE
HOME OF GOOD NEIGHBOURS SENIOR CENTRE
WINNIPEG, MB

SHEET TITLE
MAIN AND MEZZANINE FLOOR PLAN
FIRE PROTECTION LAYOUT

SCALE: AS SHOWN PROJECT NO.: PP&D 2006-065 SHEET NO.: M-5.1
DRAWING SHEET SIZE: ARCH E1 (42" x 30") PLOT 1:1