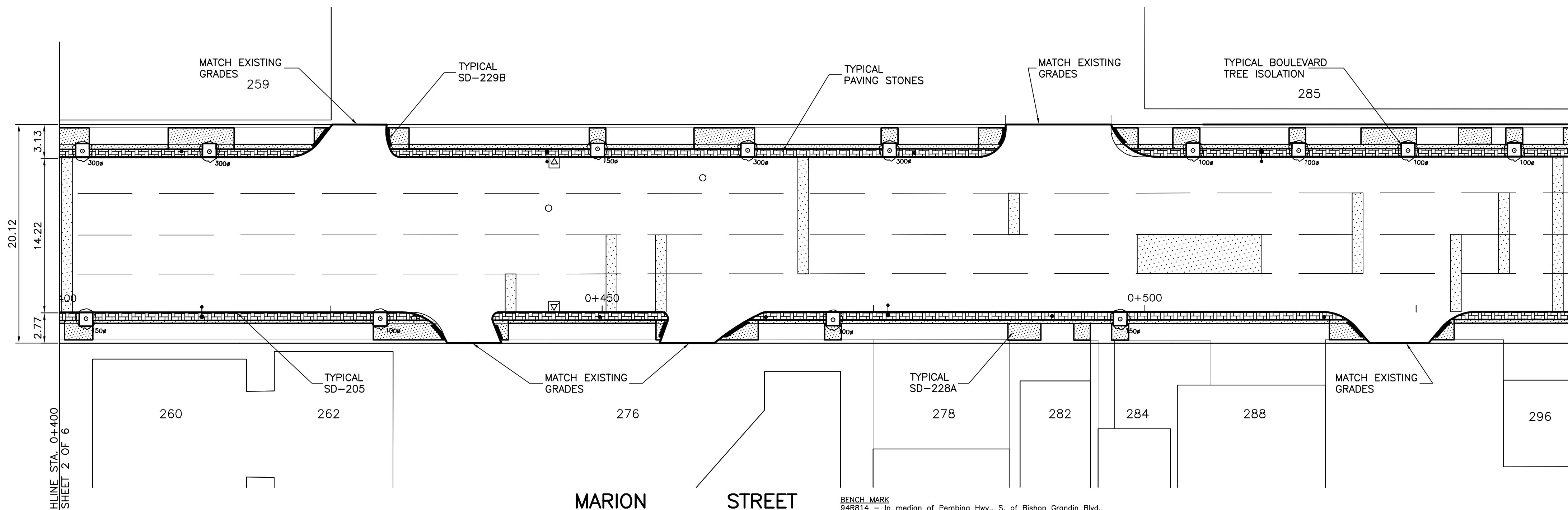
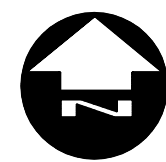
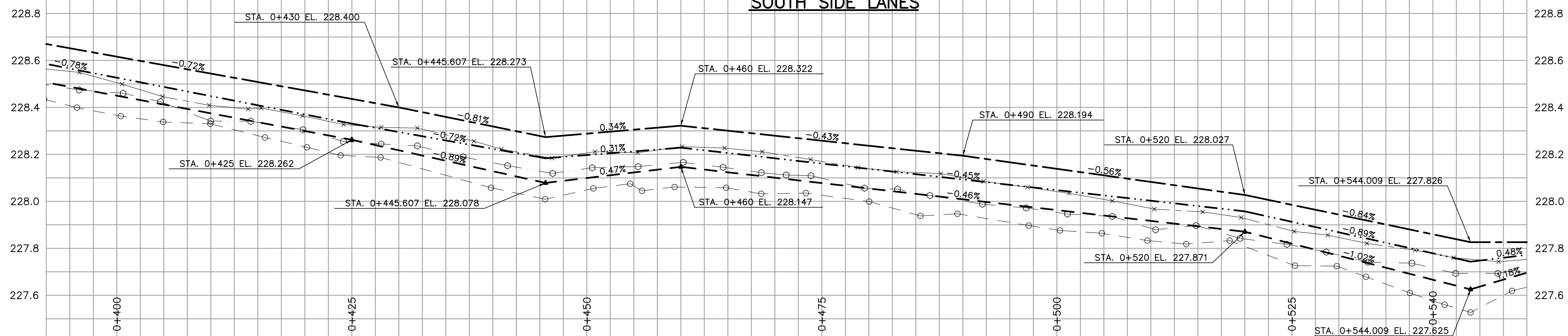


NORTH SIDE LANES
SOUTH SIDE LANES



NOTES:

1. STATIONING IN SOUTH GUTTER OF MARION ST. UNLESS NOTED OTHERWISE.
2. EXISTING CURB INLET ON S.W. SIDE OF MARION ST. = STA. 0+100.0.
3. SEE DWG P3289-06 FOR TYPICAL CROSS SECTIONS AND DETAILS.
4. FINAL CURB HEIGHT TYPICALLY 75mm OR LOWER IN AREAS WHERE DRAINAGE MUST BE MAINTAINED. ALL DIMENSIONS ARE TO BACK OF CURB.
5. ADJUST OR REPLACE EXISTING DRAINAGE INLETS WITH NEW SD-024 OR SD-023 AS DIRECTED BY THE CONTRACT ADMINISTRATOR.
6. ISOLATE MISCELLANEOUS ITEMS IN NEW CONCRETE WORKS AS PER SD-228C.
7. PLANE HEADERS AT ALL INTERSECTING PUBLIC STREETS.
8. LEGAL PLAN AND UNDERGROUND INFORMATION FROM CITY OF WINNIPEG LBIS.
9. 200mm THICK BASE COURSE UNDER CONCRETE PAVEMENT AT MAJOR RADII IMPROVEMENTS.
10. STREET LIGHTS ON SOUTH SIDE TO BE REMOVED AND NORTH SIDE TO BE RELOCATED TO PROPERTY LINE BY OTHERS.
11. TRAFFIC SIGNAL POLES, CONTROLLERS AND UNDERGROUND APPURTENANCES IN PROJECT AREA TO BE UPGRADED BY OTHERS.

METRIC
WHOLE NUMBERS INDICATE MILLIMETRES
DECIMALIZED NUMBERS INDICATE METRES

150 mm W.M.	WATERMAIN	150 mm W.M.	HYDRO	150 mm W.M.	WATERMAIN	150 mm W.M.
Hydrant symbol	HYDRANT	Hydrant symbol	M.T.S.	Hydrant symbol	HYDRANT	Hydrant symbol
Valve symbol	VALVE	Valve symbol	CONCRETE	Valve symbol	VALVE	Valve symbol
300 mm L.D.S.	LAND DRAINAGE SEWER	300 mm L.D.S.	ASPHALT	300 mm L.D.S.	LAND DRAINAGE SEWER	300 mm L.D.S.
250 mm W.W.S.	WASTE WATER SEWER	250 mm W.W.S.	PLANING	250 mm W.W.S.	WASTE WATER SEWER	250 mm W.W.S.
Manhole symbol	MANHOLE	Manhole symbol	SIDEWALK	Manhole symbol	WASTE WATER SEWER	Manhole symbol
Catch basin symbol	CATCH BASIN	Catch basin symbol	PAVING STONES	Catch basin symbol	WASTE WATER SEWER	Catch basin symbol
Curb inlet symbol	CURB INLET	Curb inlet symbol	PARTIAL DEPTH REPAIR	Curb inlet symbol	WASTE WATER SEWER	Curb inlet symbol
Junction symbol	JUNCTIONS	Junction symbol	PROPERTY LINE	Junction symbol	WASTE WATER SEWER	Junction symbol
Culvert symbol	CULVERT	Culvert symbol	SURVEY BAR	Culvert symbol	WASTE WATER SEWER	Culvert symbol
Gas symbol	GAS	Gas symbol	CURB RAMP	Gas symbol	WASTE WATER SEWER	Gas symbol
Existing symbol	LEGEND-PLAN	Proposed symbol	LEGEND-PLAN	Existing symbol	LEGEND-PROFILE	Proposed symbol

MARION STREET

BENCHMARK
S48514 - in median of Pembina Hwy, S. of Bishop Grandin Blvd.,
Tbht. in 6.096 m Conc. Pile, 24.9 m S. of C.L. of bus exit lane
located in median of Pembina Hwy. @ University Cres. & 1.1 m E.
of W. curb of median.

UNDERGROUND STRUCTURES	DATE
SUPV. U/G STRUCTURES COMMITTEE	
NOTE:	
LOCATION OF UNDERGROUND STRUCTURES AS SHOWN ARE BASED ON THE BEST INFORMATION AVAILABLE. BUT NO GUARANTEE IS GIVEN THAT ALL EXISTING UTILITIES ARE SHOWN OR THAT THE GIVEN LOCATIONS ARE EXACT. CONFIRMATION OF EXISTENCE AND EXACT LOCATION OF ALL SERVICES MUST BE OBTAINED FROM THE INDIVIDUAL UTILITIES BEFORE PROCEEDING WITH CONSTRUCTION.	

B.M.	78-074	DESIGNED BY	S.P.C.
ELEV.	233.165m	DRAWN BY	A.P.
		CHECKED BY	D.B.W.
		APPROVED BY	
2	ISSUED FOR TENDER	03/10/08	S.P.C.
1	ISSUED FOR REVIEW	02/1/08	S.P.C.
NO.	REVISIONS	DATE	BY
		JAN. 23, 2008	

HOR. SCALE	1:250
VERTICAL	1:10
RELEASED FOR CONSTRUCTION	DATE

DILLON CONSULTING

ENGINEER'S SEAL
PROVINCE OF MANITOBA
REGISTERED PROFESSIONAL ENGINEER
D.B. WIEBE
0371006
Member 22480
CONSULTANT PROJECT NO.
07-8632

THE CITY OF WINNIPEG
PUBLIC WORKS DEPARTMENT

MARION STREET
KENNY STREET TO RUE DES MEURONS
CONCRETE REPAIRS AND ASPHALT OVERLAY
STA. 0+400 TO STA. 0+540

CITY DRAWING NUMBER
P-3289-03
SHEET **3** OF **6**