

- NOTES:**
- STATIONING IN SOUTH GUTTER OF MARION ST. UNLESS NOTED OTHERWISE.
 - EXISTING CURB INLET ON S.W. SIDE OF MARION ST. = STA. 0+100.0.
 - SEE DWG P3289-06 FOR TYPICAL CROSS SECTIONS AND DETAILS.
 - FINAL CURB HEIGHT TYPICALLY 75mm OR LOWER IN AREAS WHERE DRAINAGE MUST BE MAINTAINED.
 - ALL DIMENSIONS ARE TO BACK OF CURB.
 - ADJUST OR REPLACE EXISTING DRAINAGE INLETS WITH NEW SD-024 OR SD-023 AS DIRECTED BY THE CONTRACT ADMINISTRATOR.
 - ISOLATE MISCELLANEOUS ITEMS IN NEW CONCRETE WORKS AS PER SD-228C.
 - PLANE HEADERS AT ALL INTERSECTING PUBLIC STREETS.
 - LEGAL PLAN AND UNDERGROUND INFORMATION FROM CITY OF WINNIPEG L.B.S.
 - 200mm THICK BASE COURSE UNDER CONCRETE PAVEMENT AT MAJOR RADII IMPROVEMENTS.
 - STREET LIGHTS ON SOUTH SIDE TO BE REMOVED AND NORTH SIDE TO BE RELOCATED TO PROPERTY LINE BY OTHERS.
 - TRAFFIC SIGNAL POLES, CONTROLLERS AND UNDERGROUND APPURTENANCES IN PROJECT AREA TO BE UPGRADED BY OTHERS.

METRIC
WHOLE NUMBERS INDICATE MILLIMETRES
DECIMALIZED NUMBERS INDICATE METRES

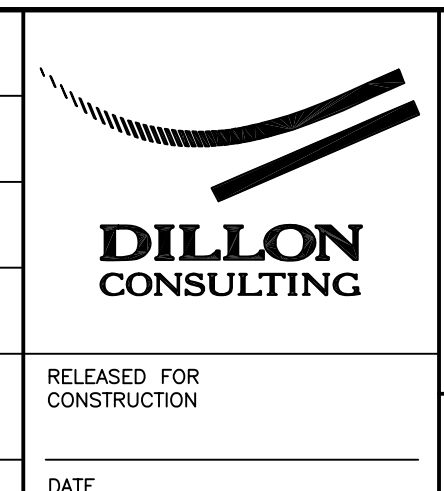
EXISTING	LEGEND-PLAN	PROPOSED	EXISTING	LEGEND-PLAN	PROPOSED	EXISTING	LEGEND-PROFILE	PROPOSED
150 mm W.M.	WATERMAIN	150 mm W.M.	HYDRO	M.T.S.	150 mm W.M.	WATERMAIN	HYDRANT	150 mm W.M.
200 mm W.S.	VALVE	200 mm W.S.	CONCRETE	CONCRETE	200 mm W.S.	VALVE	VALVE	200 mm W.S.
300 mm L.D.S.	LAND DRAINAGE SEWER	300 mm L.D.S.	ASPHALT	ASPHALT	300 mm L.D.S.	LAND DRAINAGE SEWER	LAND DRAINAGE SEWER	300 mm L.D.S.
250 mm W.W.S.	WASTE WATER SEWER	250 mm W.W.S.	PLANNING	PLANNING	250 mm W.W.S.	WASTE WATER SEWER	WASTE WATER SEWER	250 mm W.W.S.
○	MANHOLE	●	SIDEWALK	SIDEWALK	□	Q PROFILE	Q PROFILE	□
▽	CATCH BASIN	▲	PAVING STONES	PAVING STONES	○	NORTH/WEST GUTTER	NORTH/WEST GUTTER	○
□	CURB INLET	■	PARTIAL DEPTH REPAIR	PARTIAL DEPTH REPAIR	○	SOUTH/EAST GUTTER	SOUTH/EAST GUTTER	○
+	JUNCTIONS	+	PROPERTY LINE	PROPERTY LINE	○	NORTH EDGE OF LANE	NORTH EDGE OF LANE	○
—	CULVERT	—	SURVEY BAR	SURVEY BAR	○	SOUTH EDGE OF LANE	SOUTH EDGE OF LANE	○
—	GAS	—	CURB RAMP	CURB RAMP	○			○
—	LEGEND-PLAN	—	LEGEND-PLAN	LEGEND-PLAN	○			○
—	PROPOSED	—	PROPOSED	PROPOSED	○			○

UNDERGROUND STRUCTURES

SUPV. U/G STRUCTURES COMMITTEE DATE

NOTE:
LOCATION OF UNDERGROUND STRUCTURES AS SHOWN ARE BASED ON THE BEST INFORMATION AVAILABLE. BUT NO GUARANTEE IS GIVEN THAT ALL EXISTING UTILITIES ARE SHOWN OR THAT THE GIVEN LOCATIONS ARE EXACT. CONFIRMATION OF EXISTENCE AND EXACT LOCATION OF ALL SERVICES MUST BE OBTAINED FROM THE INDIVIDUAL UTILITIES BEFORE PROCEEDING WITH CONSTRUCTION.

B.M. 78-074 ELEV. 233.165m	DESIGNED BY S.P.C.
	DRAWN BY A.P.
	CHECKED BY D.B.W.
	APPROVED BY
2 ISSUED FOR TENDER 03/10/08 S.P.C.	HOR. SCALE 1:250
1 ISSUED FOR REVIEW 02/1/08 S.P.C.	VERTICAL 1:10
NO. REVISIONS	DATE BY
	DATE JAN. 23, 2008



THE CITY OF WINNIPEG
PUBLIC WORKS DEPARTMENT

MARION STREET
KENNY STREET TO RUE DES MEURONS
CONCRETE REPAIRS AND ASPHALT OVERLAY
STA. 0+675 TO RUE DES MEURONS

CITY DRAWING NUMBER
P-3289-05
SHEET 5 OF 6

CONSULTANT PROJECT NO.
07-8632