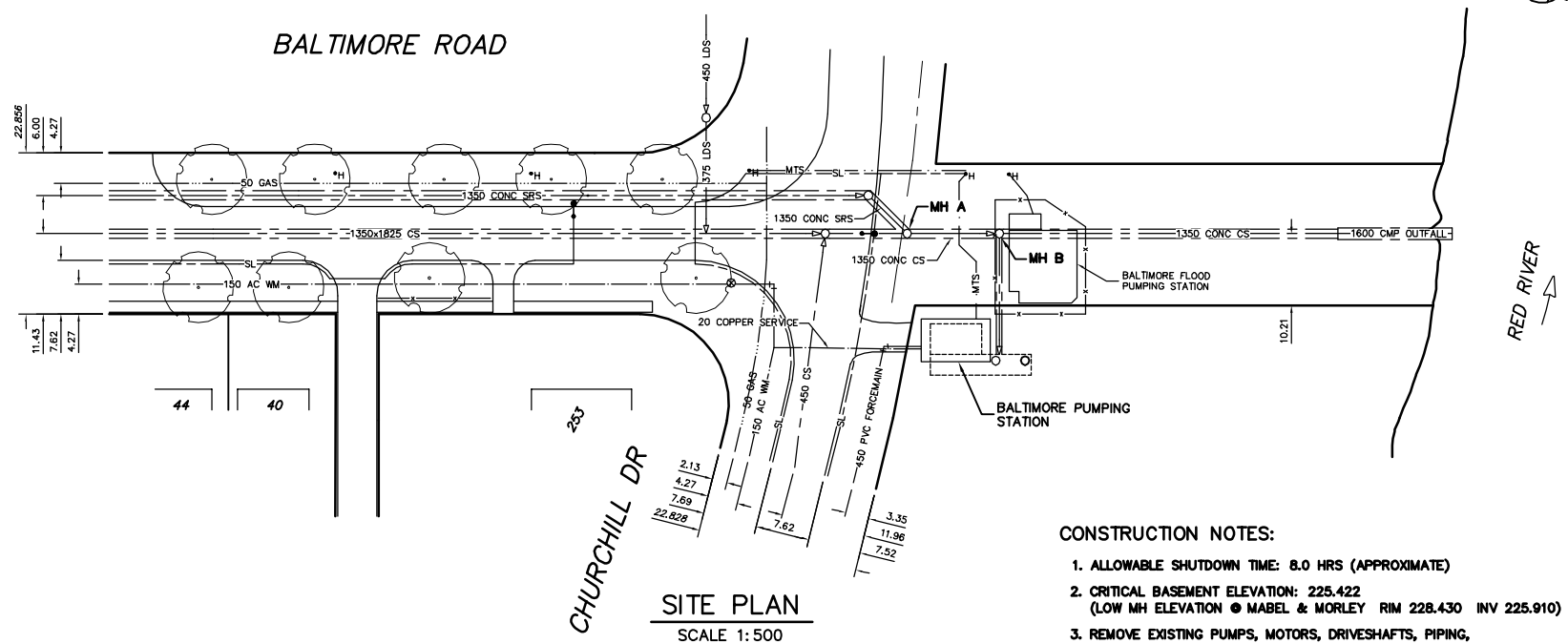


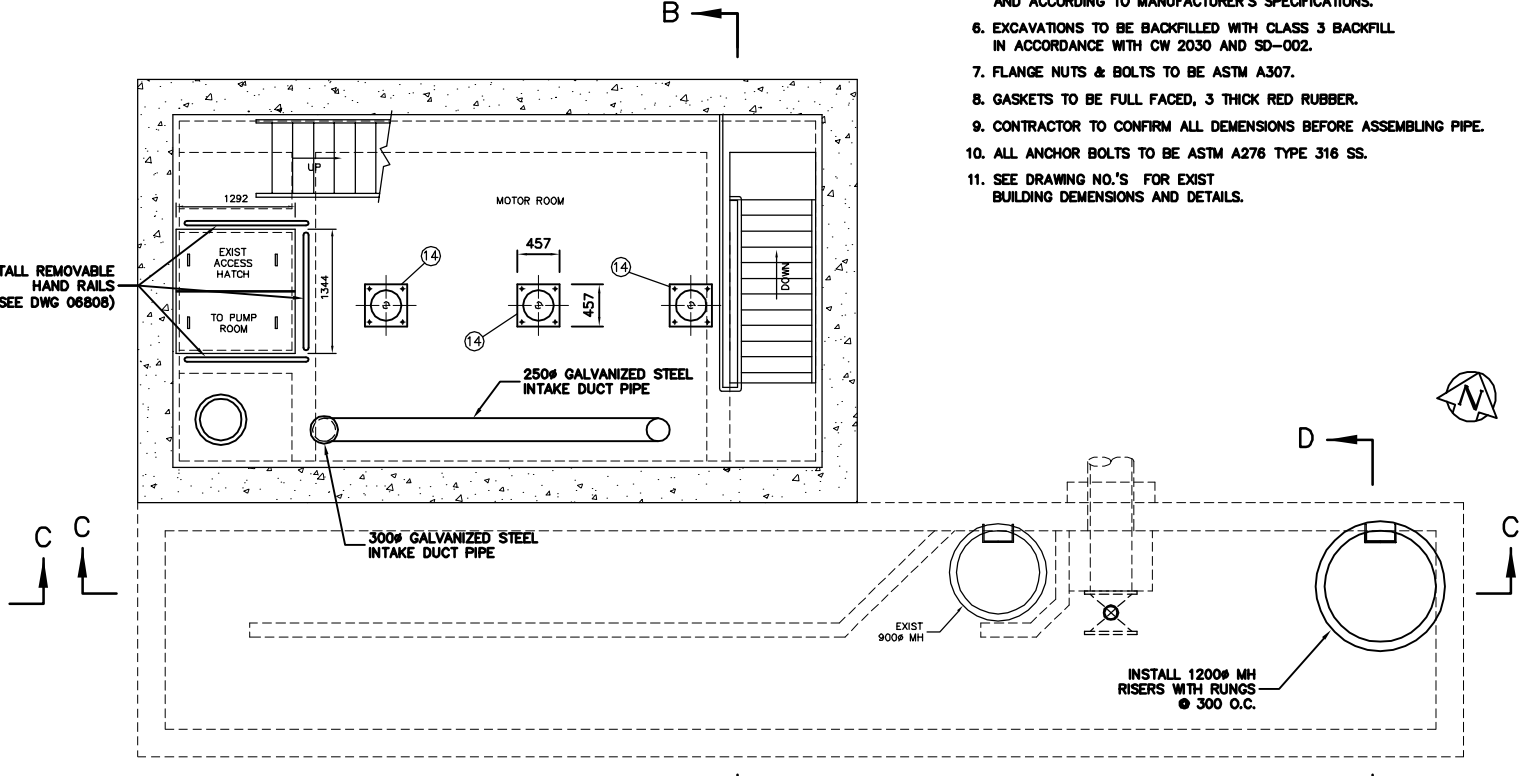
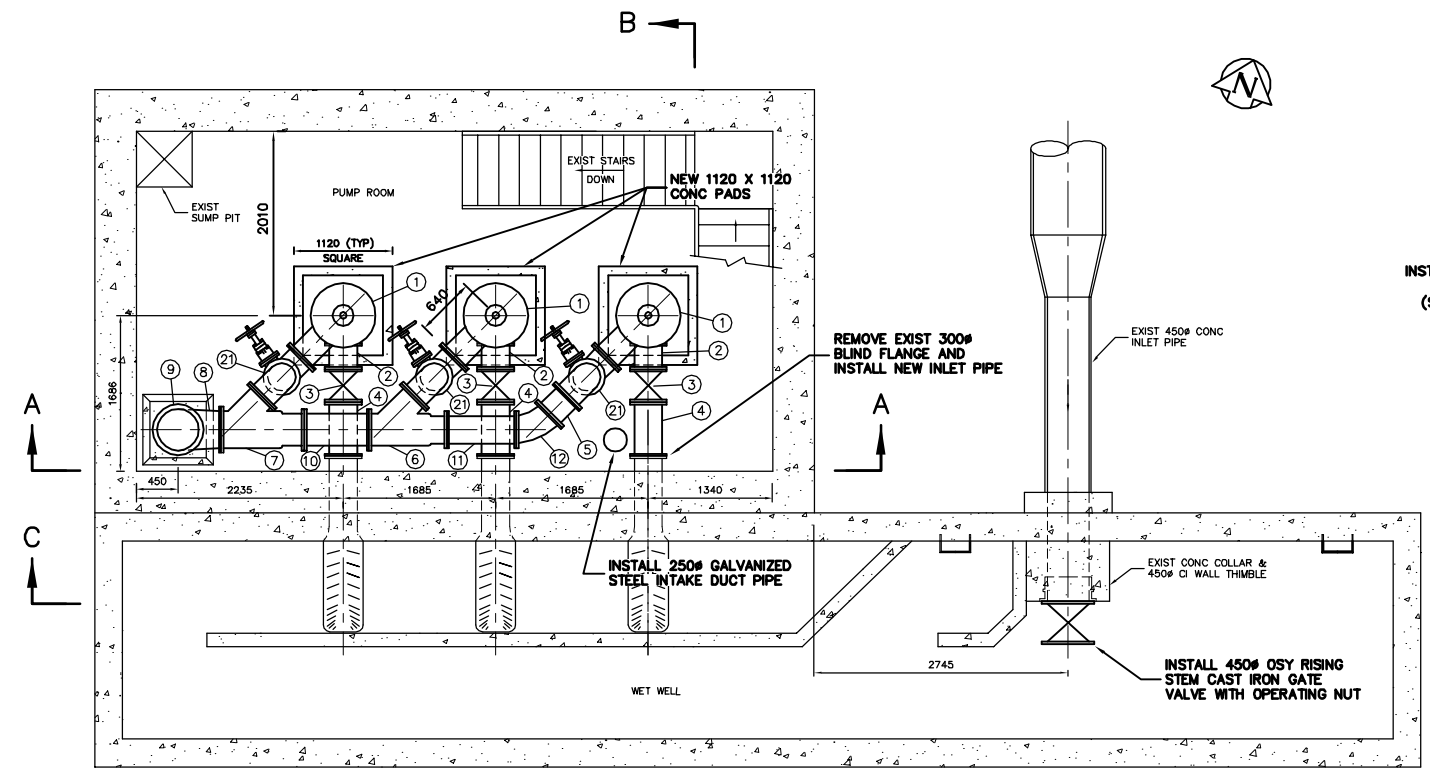
**MATERIALS LIST**

ITEM	DESCRIPTION	ENDS	LENGTH	QUANTITY
1	FLOWSERVE MODEL 10M716A PUMP	FL	-	3 *
2	300# PIPE	FL	-	3
3	300# GATE VALVE	FL	-	6
4	300# PIPE	FL	-	3
5	300# PIPE	FL	275±	1
6	350 X 300 X 300 CAST IRON REDUCING WYE	FL	-	1
7	400 X 350 X 300 CAST IRON REDUCING WYE	FL	-	1
8	450 X 400 CAST IRON STD RAD REDUCING BEND	FL	-	1
9	450 "UNIFLANGE" OR APPROVED EQUAL REMOVABLE FLANGE	-	-	3
10	350# PIPE	FL	702±	1
11	300# PIPE	FL	-	1
12	300# CAST IRON 45° STD RAD BEND	FL	-	1
14	PUMP MOTOR AND BASE	-	-	3
15	450# PIPE	PE X FL	-	1
16	300# PIPE	FL X PE	300	3
17	300 "UNIFLANGE" OR APPROVED EQUAL REMOVABLE FLANGE	-	-	6
18	300 CHECK VALVE WITH RUBBER FLAP	FL X FL	-	3
19	450# GATE VALVE	FL X FL	432	1
20	300# PIPE	FL	895	3
21	300 CAST IRON 90° STD RAD BEND	FL	-	3
22	450# PIPE	FL	-	1
23	450 ROSEMOUNT OR ABB FLOWMETER	FL	-	1
24	450# PIPE	FL X PE	-	1
25	300 X 250 CAST IRON REDUCING STD ELBOW	FL	-	3
26	PIPE HANGER (SEE DETAIL ON DWG 06021)	-	AS-REQUIRED	3
27	PIPE SUPPORTS	-	-	3

NOTE: LENGTHS & DIMENSIONS SHOWN AS ± TO BE FIELD CONFIRMED BY CONTRACTOR  
 \* ITEMS SUPPLIED BY CITY  
 - CONTRACTOR TO SUPPLY AND INSTALL POWER CABLES AND CONDUIT FROM PUMP MOTORS TO ELECTRICAL CONTROL PANEL IN STATION



- CONSTRUCTION NOTES:**
- ALLOWABLE SHUTDOWN TIME: 8.0 HRS (APPROXIMATE)
  - CRITICAL BASEMENT ELEVATION: 225.422 (LOW MH ELEVATION @ MABEL & MORLEY RIM 228.430 INV 225.910)
  - REMOVE EXISTING PUMPS, MOTORS, DRIVESHAFTS, PIPING, VALVES, FITTINGS, AND OTHER MATERIALS AS REQUIRED.
  - PROVIDE TEMPORARY PUMPING OF WASTEWATER DURING CONSTRUCTION.
  - INSTALL MECHANICAL & ELECTRICAL WORKS AS INDICATED AND ACCORDING TO MANUFACTURER'S SPECIFICATIONS.
  - EXCAVATIONS TO BE BACKFILLED WITH CLASS 3 BACKFILL IN ACCORDANCE WITH CW 2030 AND SD-002.
  - FLANGE NUTS & BOLTS TO BE ASTM A307.
  - GASKETS TO BE FULL FACED, 3 THICK RED RUBBER.
  - CONTRACTOR TO CONFIRM ALL DIMENSIONS BEFORE ASSEMBLING PIPE.
  - ALL ANCHOR BOLTS TO BE ASTM A276 TYPE 316 SS.
  - SEE DRAWING NO.'S FOR EXIST BUILDING DIMENSIONS AND DETAILS.



200 WM	WATERMAIN	200 WM	SL, HYDRO	150 WM	WATERMAIN	150 WM
+	HYDRANT	+	MTS	+	HYDRANT	+
⊕	VALVE	⊕	TRAFFIC SIGNALS	⊕	VALVE	⊕
525 LDS	LAND DRAINAGE SEWER	525 LDS	GAS	50 GAS	300 LDS	LAND DRAINAGE SEWER
375 WWS	WASTEWATER SEWER	375 WWS	SURVEY BAR	250 WWS	WASTEWATER SEWER	250 WWS
○	MANHOLE	●	FENCE	⊕	PROFILE	
□	CATCH BASIN	■	POLE - HYDRO, MTS	=====	GROUND ABOVE PIPE	
▽	CURB INLET	▽	CURB STOP	⊕	☉ DITCH (NORTH & WEST)	
⊕	JUNCTIONS	⊕	GUY ANCHOR	⊕	☉ DITCH (SOUTH & EAST)	
⊕	CULVERT	⊕	LIGHT STANDARD	⊕	GUTTER (NORTH & WEST)	
⊕	ANODE	⊕	TREE	⊕	GUTTER (SOUTH & EAST)	
---	EXISTING	---	LEGEND-PLAN	---	EXISTING	---
---	LEGEND-PLAN	---	PROPOSED	---	LEGEND-PROFILE	---
---	PROPOSED	---	EXISTING	---	PROPOSED	---

**LOCATION APPROVED UNDERGROUND STRUCTURES**

SUPV. U/G STRUCTURES COMMITTEE DATE

NOTE: LOCATION OF UNDERGROUND STRUCTURES AS SHOWN ARE BASED ON THE BEST INFORMATION AVAILABLE BUT NO GUARANTEE IS GIVEN THAT ALL EXISTING UTILITIES ARE SHOWN OR THAT THE GIVEN LOCATIONS ARE EXACT. CONFIRMATION OF EXISTENCE AND EXACT LOCATION OF ALL SERVICES MUST BE OBTAINED FROM THE INDIVIDUAL UTILITIES BEFORE PROCEEDING WITH CONSTRUCTION.

NO.	REVISIONS	DATE	BY

**CITY OF WINNIPEG WATER AND WASTE ENGINEERING DIVISION**

DESIGNED BY: DB  
 CHECKED BY: TW  
 DRAWN BY: CJH  
 APPROVED BY: KZ  
 HOR. SCALE: 1:250  
 VERTICAL: 1:50  
 DATE: 2007 12 13

ENGINEER'S SEAL  
 ORIGINAL SIGNED BY K.R. ZUREK  
 2007.12.13

**THE CITY OF WINNIPEG WATER AND WASTE DEPARTMENT**

2007 PUMPING STATION UPGRADES  
 INSTALLATION OF NEW PUMPING UNITS AND MODIFICATIONS TO THE  
**BALTIMORE WASTEWATER PUMPING STATION**  
 PLAN VIEWS

SHEET 1 OF 16  
 CITY DRAWING NUMBER 06794

METRIC  
 WHOLE NUMBERS INDICATE MILLIMETRES  
 DECIMALIZED NUMBERS INDICATE METRES