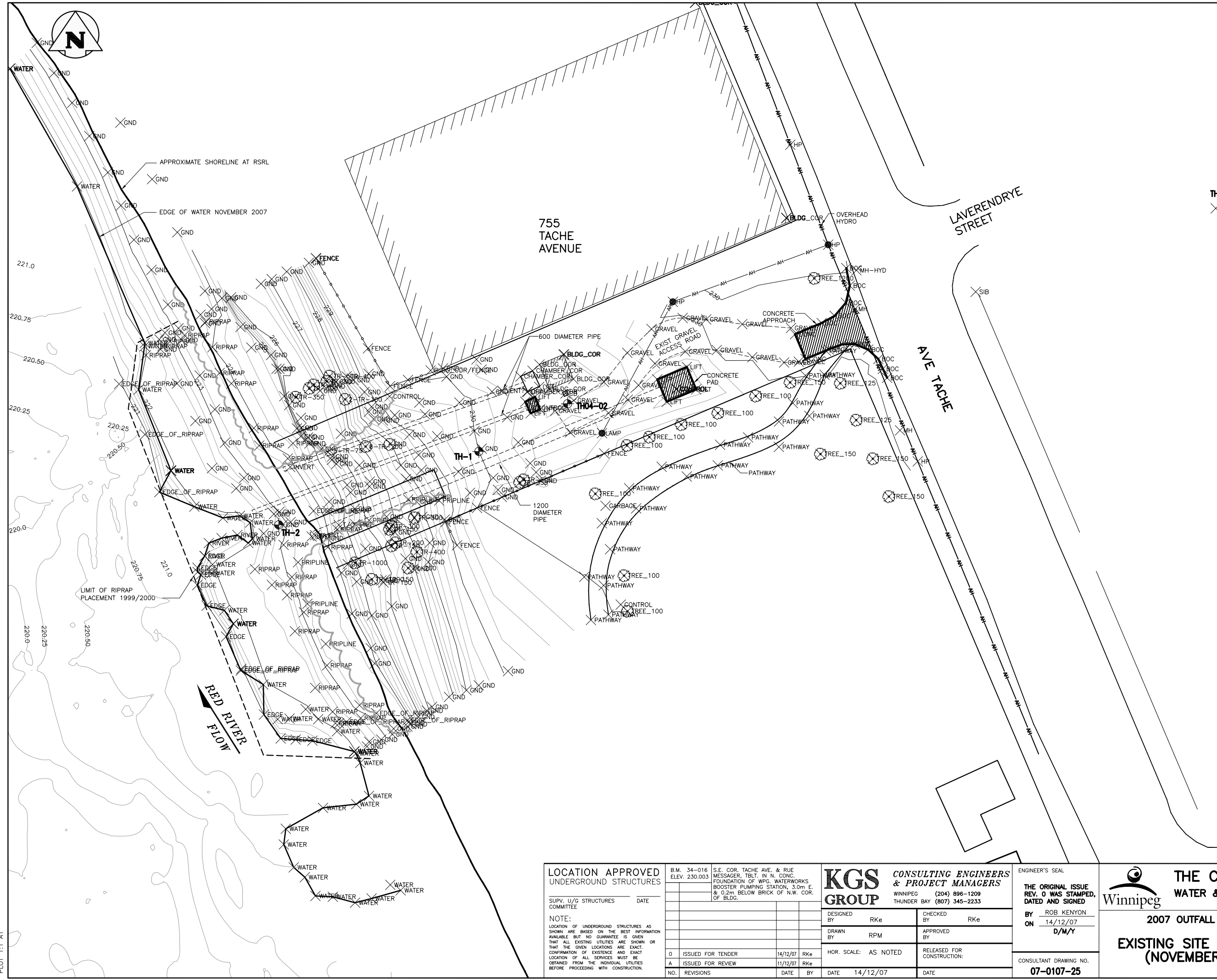


P:\Projects\2007\07-0107-25\Geo\Drawings\Tender-Construction\Rev 0\07-0107-25-03-Rev0.dwg - Tab: Layout1 - Dec 14, 2007 - 11:03am - User Name: Deroche
 PLOT 1:1 A1



NOTES
 1. TOPOGRAPHY BASED ON KGS GROUP SURVEY OF NOVEMBER 2007. RIVER BOTTOM CONOURS BASED ON KGS GROUP BATHYMETRIC SURVEY OF NOVEMBER 2007.

LEGEND
 TH-1 KGS GROUP TESTHOLE
 X PATHWAY SURVEY POINT (NOVEMBER 2007)
 [Hatched Box] EXISTING STRUCTURE
 HP HYDRO POLE

PROPERTY LIMITS DELINEATION
 DELINEATION OF PROPERTY LIMITS AS SHOWN ON THIS DWG SURVEY. KGS GROUP MAKES NO REPRESENTATION OR WARRANTY AS TO THE ACCURACY OF PROPERTY LIMITS DELINEATED ON THIS DWG, NOR ON THE DIMENSIONAL ACCURACY OF DWG FEATURES RELATIVE TO THOSE PROPERTY LIMITS.

APEGM
 Certificate of Authorization
 KGS Group
 No. 245 Date: _____

LOCATION APPROVED UNDERGROUND STRUCTURES
 SUPV. U/G STRUCTURES DATE COMMITTEE
 NOTE:
 LOCATION OF UNDERGROUND STRUCTURES AS SHOWN ARE BASED ON THE BEST INFORMATION AVAILABLE BUT NO GUARANTEE IS GIVEN THAT ALL EXISTING UTILITIES ARE SHOWN OR THAT THE GIVEN LOCATIONS ARE EXACT. CONFIRMATION OF EXISTENCE AND EXACT LOCATION OF ALL SERVICES MUST BE OBTAINED FROM THE INDIVIDUAL UTILITIES BEFORE PROCEEDING WITH CONSTRUCTION.

B.M. 34-016 ELEV. 230.003	S.E. COR. TACHE AVE. & RUE MESSAGER, TBLT. IN N. CONC. FOUNDATION OF W.P.C. WATERWORKS BOOSTER PUMPING STATION, 3.0m E. & 0.2m BELOW BRICK OF N.W. COR. OF BLDG.
0	ISSUED FOR TENDER 14/12/07 RKe
A	ISSUED FOR REVIEW 11/12/07 RKe
NO.	REVISIONS DATE BY

KGS GROUP CONSULTING ENGINEERS & PROJECT MANAGERS
 WINNIPEG (204) 896-1209
 THUNDER BAY (807) 345-2233

DESIGNED BY RKe	CHECKED BY RKe
DRAWN BY RPM	APPROVED BY
HOR. SCALE: AS NOTED	
RELEASED FOR CONSTRUCTION:	
DATE 14/12/07	DATE

ENGINEER'S SEAL
THE ORIGINAL ISSUE REV. 0 WAS STAMPED, DATED AND SIGNED
 BY ROB KENYON
 ON 14/12/07
 D/M/Y
 CONSULTANT DRAWING NO. 07-0107-25

THE CITY OF WINNIPEG WATER & WASTE DEPARTMENT
 2007 OUTFALL REPAIRS
EXISTING SITE CONDITIONS (NOVEMBER 2007)

SHEET 03 OF 05
CAD FILE DRAWING NUMBER 07-107-25-11rev0
CITY DRAWING NUMBER LD-3940