

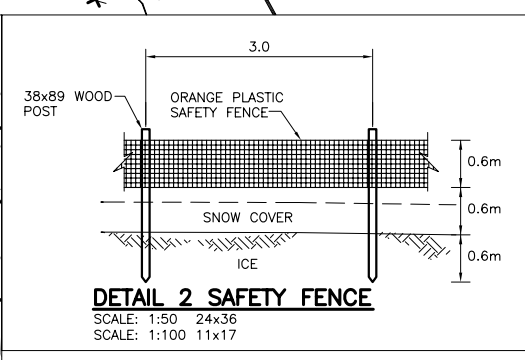
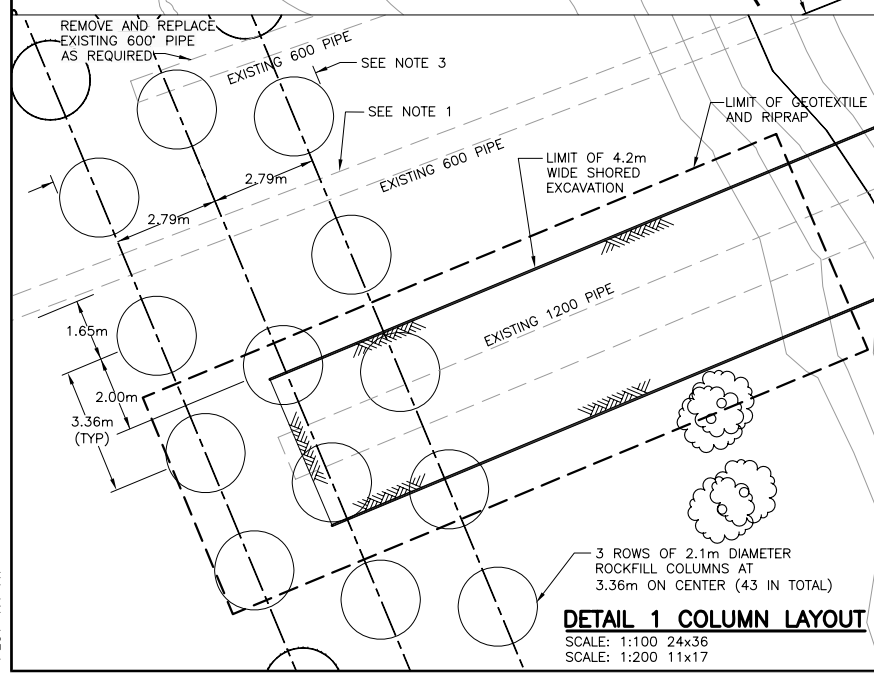
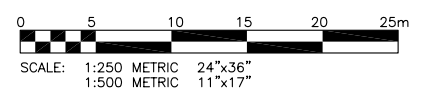
- LEGEND**
- EXISTING STRUCTURE
 - SAFETY FENCE
 - EXISTING TREE
 - TREE TO BE REMOVED
 - EXISTING CHAIN LINK FENCE
 - REGULATED SUMMER WATER LEVEL
 - UNREGULATED WINTER RIVER LEVEL
 - KGS GROUP TESTHOLE
 - HP HYDRO POLE

- NOTES**
1. THE CONTRACTOR SHALL VERIFY THE LOCATION AND PROTECT THE EXISTING PIPE PRIOR TO CONSTRUCTION.
 2. THE CONTRACTOR SHALL PRUNE OVERHANGING TREES AS APPROVED BY THE CONTRACT ADMINISTRATOR.
 3. RESTORE EXISTING RIPRAP OVER ROCKFILL COLUMNS.
 4. COORDINATES OF ROCKFILL COLUMNS TO BE SUPPLIED BY THE CONTRACT ADMINISTRATOR.

PROPERTY LIMITS DELINEATION

DELINEATION OF PROPERTY LIMITS AS SHOWN ON THIS DWG DOES NOT REPRESENT A "LEGAL SURVEY". KGS GROUP MAKES NO REPRESENTATION OR WARRANTY AS TO THE ACCURACY OF PROPERTY LIMITS DELINEATED ON THIS DWG, NOR ON THE DIMENSIONAL ACCURACY OF DWG FEATURES RELATIVE TO THOSE PROPERTY LIMITS.

PLAN
 SCALE: 1:250 24x36
 SCALE: 1:500 11x17



LOCATION APPROVED UNDERGROUND STRUCTURES

SUPV. U/G STRUCTURES COMMITTEE DATE

NOTE:
 LOCATION OF UNDERGROUND STRUCTURES AS SHOWN ARE BASED ON THE BEST INFORMATION AVAILABLE BUT NO GUARANTEE IS GIVEN THAT ALL EXISTING UTILITIES ARE SHOWN OR THAT THE GIVEN LOCATIONS ARE EXACT. CONFIRMATION OF EXISTENCE AND EXACT LOCATION OF ALL SERVICES MUST BE OBTAINED FROM THE INDIVIDUAL UTILITIES BEFORE PROCEEDING WITH CONSTRUCTION.

B.M. 34-016 ELEV. 230.003	S.E. COR. TACHE AVE. & RUE MESSAGER, TBLT. IN N. CONC. FOUNDATION OF WPC. WATERWORKS BOOSTER PUMPING STATION, 3.0m E. & 0.2m BELOW BRICK OF N.W. COR. OF BLDG.		
1	ROCKFILL COLUMN RELOCATE	17/12/07	RKe
0	ISSUED FOR TENDER	14/12/07	RKe
A	ISSUED FOR REVIEW	11/12/07	RKe
NO.	REVISIONS	DATE	BY

KGS GROUP CONSULTING ENGINEERS & PROJECT MANAGERS
 WINNIPEG (204) 896-1209
 THUNDER BAY (807) 345-2233

DESIGNED BY	RKe	CHECKED BY	RKe
DRAWN BY	RPM	APPROVED BY	
HOR. SCALE: AS NOTED		RELEASED FOR CONSTRUCTION:	
DATE	17/12/07	DATE	

ENGINEER'S SEAL

THE ORIGINAL ISSUE
 REV. 1 WAS STAMPED,
 DATED AND SIGNED

BY ROB KENYON
 ON 18/12/07
 D/M/Y

CONSULTANT DRAWING NO.
07-0107-25

THE CITY OF WINNIPEG
 WATER & WASTE DEPARTMENT

2007 OUTFALL REPAIRS

ROCKFILL COLUMNS, EXCAVATION AND REGRADING PLANS

SHEET **04** OF **05**

CAD FILE DRAWING NUMBER
07-107-25-12rev1

CITY DRAWING NUMBER
LD-3941

APEGM
 Certificate of Authorization
 KGS Group
 No. 245 Date: 17/12/07