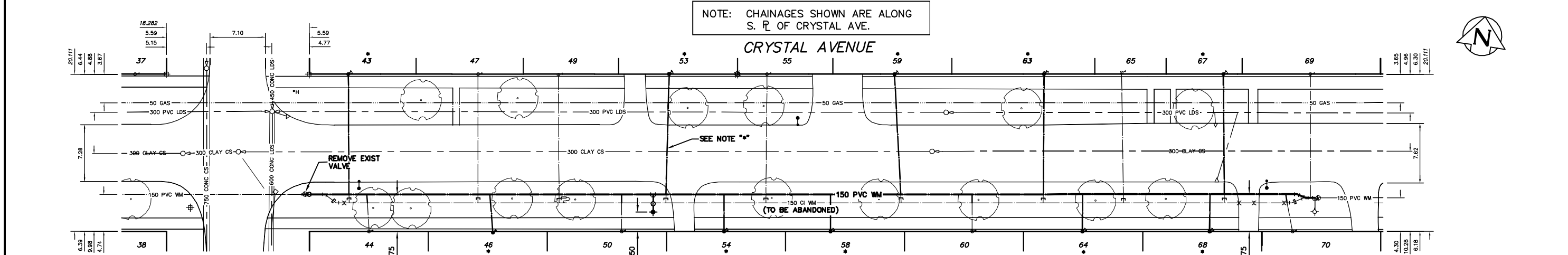


NOTE: CHAINAGES SHOWN ARE ALONG S. R. OF CRYSTAL AVE.



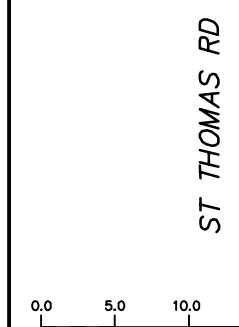
WATER SERVICE INFORMATION

ADDRESS	SIZE(mm) & TYPE (STREET)	SIZE(mm) & TYPE (PROP)	SHORT & LONG MEASUREMENT	CORP. LOCATION	REMARKS
43 CRYSTAL AVE RESIDENTIAL	12 COPPER	12 COPPER	2.73 EWL HSE	-	EXACT CORP LOCATION UNKNOWN
44 CRYSTAL AVE RESIDENTIAL	20 COPPER	12 COPPER	3.93 EWL HSE	0.2 W OF S/C	-
46 CRYSTAL AVE RESIDENTIAL	12 COPPER	20 COPPER	7.53 EEL ST. THOMAS	-	EXACT CORP LOCATION UNKNOWN
47 CRYSTAL AVE RESIDENTIAL	20 COPPER	20 COPPER	23.52 EEL ST. THOMAS	-	EXACT CORP LOCATION UNKNOWN
47 CRYSTAL AVE RESIDENTIAL	20 COPPER	20 COPPER	1.48 WWL HSE	-	EXACT CORP LOCATION UNKNOWN
47 CRYSTAL AVE RESIDENTIAL	20 COPPER	20 COPPER	21.58 EEL ST. THOMAS	-	EXACT CORP LOCATION UNKNOWN
49 CRYSTAL AVE RESIDENTIAL	20 COPPER	12 COPPER	3.79 EWL HSE	0.1 E OF S/C	-
50 CRYSTAL AVE RESIDENTIAL	20 COPPER	12 COPPER	31.79 EEL ST. THOMAS	-	EXACT CORP LOCATION UNKNOWN
50 CRYSTAL AVE RESIDENTIAL	12 COPPER	12 COPPER	1.03 EWL HSE	-	EXACT CORP LOCATION UNKNOWN
53 CRYSTAL AVE RESIDENTIAL	12 COPPER	12 COPPER	2.01 EWL HSE	-	EXACT CORP LOCATION UNKNOWN
53 CRYSTAL AVE RESIDENTIAL	12 COPPER	12 COPPER	45.94 EEL ST. THOMAS	-	EXACT CORP LOCATION UNKNOWN
54 CRYSTAL AVE RESIDENTIAL	12 COPPER	12 COPPER	2.53 EWL HSE	-	EXACT CORP LOCATION UNKNOWN
55 CRYSTAL AVE RESIDENTIAL	20 COPPER	20 COPPER	53.09 EEL ST. THOMAS	-	EXACT CORP LOCATION UNKNOWN
55 CRYSTAL AVE RESIDENTIAL	20 COPPER	20 COPPER	1.74 EWL HSE	-	EXACT CORP LOCATION UNKNOWN
58 CRYSTAL AVE RESIDENTIAL	12 COPPER	20 COPPER	58.74 EEL ST. THOMAS	-	EXACT CORP LOCATION UNKNOWN
58 CRYSTAL AVE RESIDENTIAL	12 COPPER	20 COPPER	0.90 EWL HSE	-	EXACT CORP LOCATION UNKNOWN
58 CRYSTAL AVE RESIDENTIAL	12 COPPER	20 COPPER	66.72 EEL ST. THOMAS	-	EXACT CORP LOCATION UNKNOWN

WATER SERVICE INFORMATION

ADDRESS	SIZE(mm) & TYPE (STREET)	SIZE(mm) & TYPE (PROP)	SHORT & LONG MEASUREMENT	CORP. LOCATION	REMARKS
59 CRYSTAL AVE RESIDENTIAL	12 COPPER	12 COPPER	1.75 EWL HSE	-	EXACT CORP LOCATION UNKNOWN
60 CRYSTAL AVE RESIDENTIAL	20 COPPER	20 COPPER	74.87 EEL ST. THOMAS	-	EXACT CORP LOCATION UNKNOWN
60 CRYSTAL AVE RESIDENTIAL	20 COPPER	20 COPPER	2.04 EWL HSE	-	EXACT CORP LOCATION UNKNOWN
60 CRYSTAL AVE RESIDENTIAL	20 COPPER	20 COPPER	84.92 EEL ST. THOMAS	-	EXACT CORP LOCATION UNKNOWN
63 CRYSTAL AVE RESIDENTIAL	12 COPPER	12 COPPER	1.22 EWL HSE	-	EXACT CORP LOCATION UNKNOWN
63 CRYSTAL AVE RESIDENTIAL	12 COPPER	12 COPPER	94.04 EEL ST. THOMAS	-	EXACT CORP LOCATION UNKNOWN
64 CRYSTAL AVE RESIDENTIAL	12 COPPER	12 COPPER	3.14 EWL HSE	-	EXACT CORP LOCATION UNKNOWN
64 CRYSTAL AVE RESIDENTIAL	12 COPPER	12 COPPER	98.89 EEL ST. THOMAS	-	EXACT CORP LOCATION UNKNOWN
65 CRYSTAL AVE RESIDENTIAL	20 COPPER	20 COPPER	1.16 EWL HSE	-	EXACT CORP LOCATION UNKNOWN
65 CRYSTAL AVE RESIDENTIAL	20 COPPER	20 COPPER	103.90 EEL ST. THOMAS	-	EXACT CORP LOCATION UNKNOWN
67 CRYSTAL AVE RESIDENTIAL	12 COPPER	12 COPPER	1.45 WEL HSE	-	EXACT CORP LOCATION UNKNOWN
67 CRYSTAL AVE RESIDENTIAL	12 COPPER	12 COPPER	116.92 EEL ST. THOMAS	-	EXACT CORP LOCATION UNKNOWN
68 CRYSTAL AVE RESIDENTIAL	12 COPPER	12 COPPER	2.62 WEL HSE	-	EXACT CORP LOCATION UNKNOWN
68 CRYSTAL AVE RESIDENTIAL	12 COPPER	12 COPPER	115.19 EEL ST. THOMAS	-	EXACT CORP LOCATION UNKNOWN
69 CRYSTAL AVE RESIDENTIAL	20 COPPER	20 COPPER	128.12 EEL ST. THOMAS	-	EXACT CORP LOCATION UNKNOWN
70 CRYSTAL AVE RESIDENTIAL	20 COPPER	20 COPPER	1.81 EWL HSE	-	EXACT CORP LOCATION UNKNOWN
70 CRYSTAL AVE RESIDENTIAL	20 COPPER	20 COPPER	125.60 EEL ST. THOMAS	-	EXACT CORP LOCATION UNKNOWN

* SERVICES TO BE RENEWED TO R UPON CONFIRMATION BY THE CONTRACTOR OF EXISTING 1/2" COPPER OR LEAD SERVICE. OBTAIN APPROVAL FROM CONTRACT ADMINISTRATOR PRIOR TO RENEWAL.



METRIC
WHOLE NUMBERS INDICATE MILLIMETRES
DECIMALIZED NUMBERS INDICATE METRES

WARNING
IF POWER EQUIPMENT OR EXPLOSIVES ARE TO BE USED FOR EXCAVATION ON THIS PROJECT THE CONTRACTOR MUST:
1) NOTIFY THE GAS COMPANY OF THE PROPOSED LOCATION OF EXCAVATION.
2) TAKE PRECAUTION TO AVOID DAMAGE TO GAS COMPANY INSTALLATIONS.
SEE PROVINCIAL REGULATION 210/72 FOR DETAILS

FOR CONSTRUCTION NOTES
SEE DRAWING D-11220

EXISTING	LEGEND-PLAN	PROPOSED	EXISTING	LEGEND-PLAN	PROPOSED	EXISTING	LEGEND-PROFILE	PROPOSED
200 WM	WATERMAIN	200 WM	SL, HYDRO	50 GAS	50 GAS	300 LDS	LAND DRAINAGE SEWER	300 LDS
525 LDS	LAND DRAINAGE SEWER	525 LDS	50 GAS	375 WWS	WASTEWATER SEWER	375 WWS	WASTEWATER SEWER	375 WWS
375 WWS	WASTEWATER SEWER	375 WWS	50 GAS	250 WWS	WASTEWATER SEWER	250 WWS	WASTEWATER SEWER	250 WWS
○	MANHOLE	●	* * * * *	○	PROFILE	○	PROFILE	○
▽	CATCH BASIN	■	* * * * *	○	GROUND ABOVE PIPE	○	GROUND ABOVE PIPE	○
▽	CURB INLET	▽	* * * * *	○	☉ DITCH (NORTH & WEST)	○	☉ DITCH (NORTH & WEST)	○
▽	REDUCER	▽	* * * * *	○	☉ DITCH (SOUTH & EAST)	○	☉ DITCH (SOUTH & EAST)	○
▽	COUPLER	▽	* * * * *	○	☉ GUTTER (NORTH & EAST)	○	☉ GUTTER (NORTH & EAST)	○
▽	ANODE	▽	* * * * *	○	☉ GUTTER (SOUTH & EAST)	○	☉ GUTTER (SOUTH & EAST)	○

LOCATION APPROVED		B.M. ELEV.	FIELD BOOK #:
UNDERGROUND STRUCTURES			
SUPV. U/G STRUCTURES COMMITTEE	DATE	POSTED TO LIS	
NOTE: LOCATION OF UNDERGROUND STRUCTURES AS SHOWN ARE BASED ON THE BEST INFORMATION AVAILABLE BUT NO GUARANTEE IS GIVEN THAT ALL EXISTING UTILITIES ARE SHOWN OR THAT THE GIVEN LOCATIONS ARE EXACT. CONFIRMATION OF EXISTENCE AND EXACT LOCATION OF ALL SERVICES MUST BE OBTAINED FROM THE INDIVIDUAL UTILITIES BEFORE PROCEEDING WITH CONSTRUCTION.			
NO.	REVISIONS	DATE	BY

CITY OF WINNIPEG
WATER AND WASTE ENGINEERING DIVISION

DESIGNED BY: MEK
CHECKED BY: NC

DRAWN BY: C/JH
APPROVED BY: KZ

HOR. SCALE: 1:250
VERTICAL: 1:50

RELEASED FOR CONSTRUCTION

DATE: 2008 03 03

ENGINEER'S SEAL
ORIGINAL SIGNED BY K.R. ZUREK
08/03/03

THE CITY OF WINNIPEG
WATER AND WASTE DEPARTMENT

2008 WATERMAIN RENEWALS
CONTRACT 3
CRYSTAL AVENUE
ST THOMAS ROAD TO
137.5 E OF ST THOMAS ROAD

SHEET 2 OF 9
CITY DRAWING NUMBER
D-11218

FILE NAME: D-11218.dwg
PLOT DATE: 2008 03 03