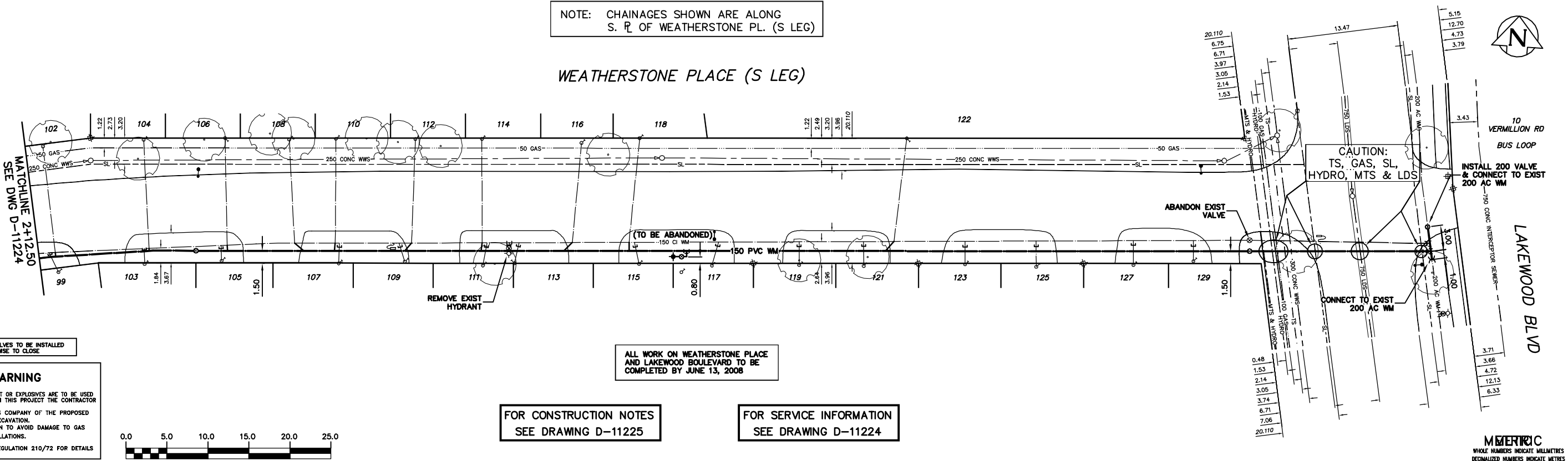


NOTE: CHAINAGES SHOWN ARE ALONG S. ϕ OF WEATHERSTONE PL. (S LEG)

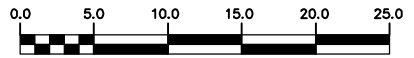
WEATHERSTONE PLACE (S LEG)



NOTE: ALL VALVES TO BE INSTALLED CLOCKWISE TO CLOSE

ALL WORK ON WEATHERSTONE PLACE AND LAKEWOOD BOULEVARD TO BE COMPLETED BY JUNE 13, 2008

WARNING
 IF POWER EQUIPMENT OR EXPLOSIVES ARE TO BE USED FOR EXCAVATION ON THIS PROJECT THE CONTRACTOR MUST:
 1) NOTIFY THE GAS COMPANY OF THE PROPOSED LOCATION OF EXCAVATION.
 2) TAKE PRECAUTION TO AVOID DAMAGE TO GAS COMPANY INSTALLATIONS.
 SEE PROVINCIAL REGULATION 210/72 FOR DETAILS



FOR CONSTRUCTION NOTES
SEE DRAWING D-11225

FOR SERVICE INFORMATION
SEE DRAWING D-11224

EXISTING	LEGEND-PLAN	PROPOSED	EXISTING	LEGEND-PLAN	PROPOSED	EXISTING	LEGEND-PROFILE	PROPOSED
\oplus	200 WM WATERMAIN	\oplus	200 WM WATERMAIN	SL, HYDRO	---	150 WM WATERMAIN	---	150 WM WATERMAIN
\odot	HYDRANT	\odot	HYDRANT	MTS	---	\oplus	HYDRANT	\oplus
\ominus	VALVE	\oplus	VALVE	TRAFFIC SIGNALS	---	\oplus	VALVE	\oplus
\ominus	525 LDS LAND DRAINAGE SEWER	\ominus	525 LDS LAND DRAINAGE SEWER	GAS	---	\ominus	50 GAS	\ominus
\ominus	375 WWS WASTEWATER SEWER	\ominus	375 WWS WASTEWATER SEWER	SURVEY BAR	---	\ominus	300 LDS LAND DRAINAGE SEWER	\ominus
\circ	MANHOLE	\bullet	MANHOLE	FENCE	---	\ominus	250 WWS WASTEWATER SEWER	\ominus
\square	CATCH BASIN	\bullet	CATCH BASIN	POLE - HYDRO, MTS	---	\ominus	250 WWS WASTEWATER SEWER	\ominus
∇	CURB INLET	\bullet	CURB INLET	FENCE	---	\ominus	250 WWS WASTEWATER SEWER	\ominus
∇	REDUCER	\bullet	REDUCER	POLE - HYDRO, MTS	---	\ominus	250 WWS WASTEWATER SEWER	\ominus
∇	COUPLER	\bullet	COUPLER	CURB STOP	---	\ominus	250 WWS WASTEWATER SEWER	\ominus
∇	ANODE	\bullet	ANODE	GUY ANCHOR	---	\ominus	250 WWS WASTEWATER SEWER	\ominus
∇	LEGEND-PLAN	\bullet	LEGEND-PLAN	LIGHT STANDARD	---	\ominus	250 WWS WASTEWATER SEWER	\ominus
∇	PROPOSED	\bullet	PROPOSED	TREE	---	\ominus	250 WWS WASTEWATER SEWER	\ominus
∇	EXISTING	\bullet	EXISTING	LEGEND-PLAN	---	\ominus	LEGEND-PROFILE	\ominus
∇	PROPOSED	\bullet	PROPOSED	PROPOSED	---	\ominus	PROPOSED	\ominus

LOCATION APPROVED
 UNDERGROUND STRUCTURES
 SUPV. U/G STRUCTURES COMMITTEE DATE
 NOTE:
 LOCATION OF UNDERGROUND STRUCTURES AS SHOWN ARE BASED ON THE BEST INFORMATION AVAILABLE BUT NO GUARANTEE IS GIVEN THAT ALL EXISTING UTILITIES ARE SHOWN OR THAT THE GIVEN LOCATIONS ARE EXACT. CONFIRMATION OF EXISTENCE AND EXACT LOCATION OF ALL SERVICES MUST BE OBTAINED FROM THE INDIVIDUAL UTILITIES BEFORE PROCEEDING WITH CONSTRUCTION.

NO.	REVISIONS	DATE	BY

CITY OF WINNIPEG
WATER AND WASTE
ENGINEERING DIVISION

DESIGNED BY: DB
 CHECKED BY: NC
 DRAWN BY: CJH
 APPROVED BY: KZ
 HOR. SCALE: 1:250
 VERTICAL SCALE: 1:50
 DATE: 2008 03 03

ENGINEER'S SEAL
 ORIGINAL SIGNED BY K.R. ZUREK 08/03/03
 BID OPPORTUNITY: 143-2008
 FILENAME: D-11223.dwg
 PLOT DATE: 2008 03 03

THE CITY OF WINNIPEG
 WATER AND WASTE DEPARTMENT

2008 WATERMAIN RENEWALS
 CONTRACT 3
WEATHERSTONE PLACE (S LEG)
 100 E OF WEATHERSTONE PLACE (W LEG) TO LAKEWOOD BOULEVARD

SHEET 7 OF 9
 CITY DRAWING NUMBER D-11223