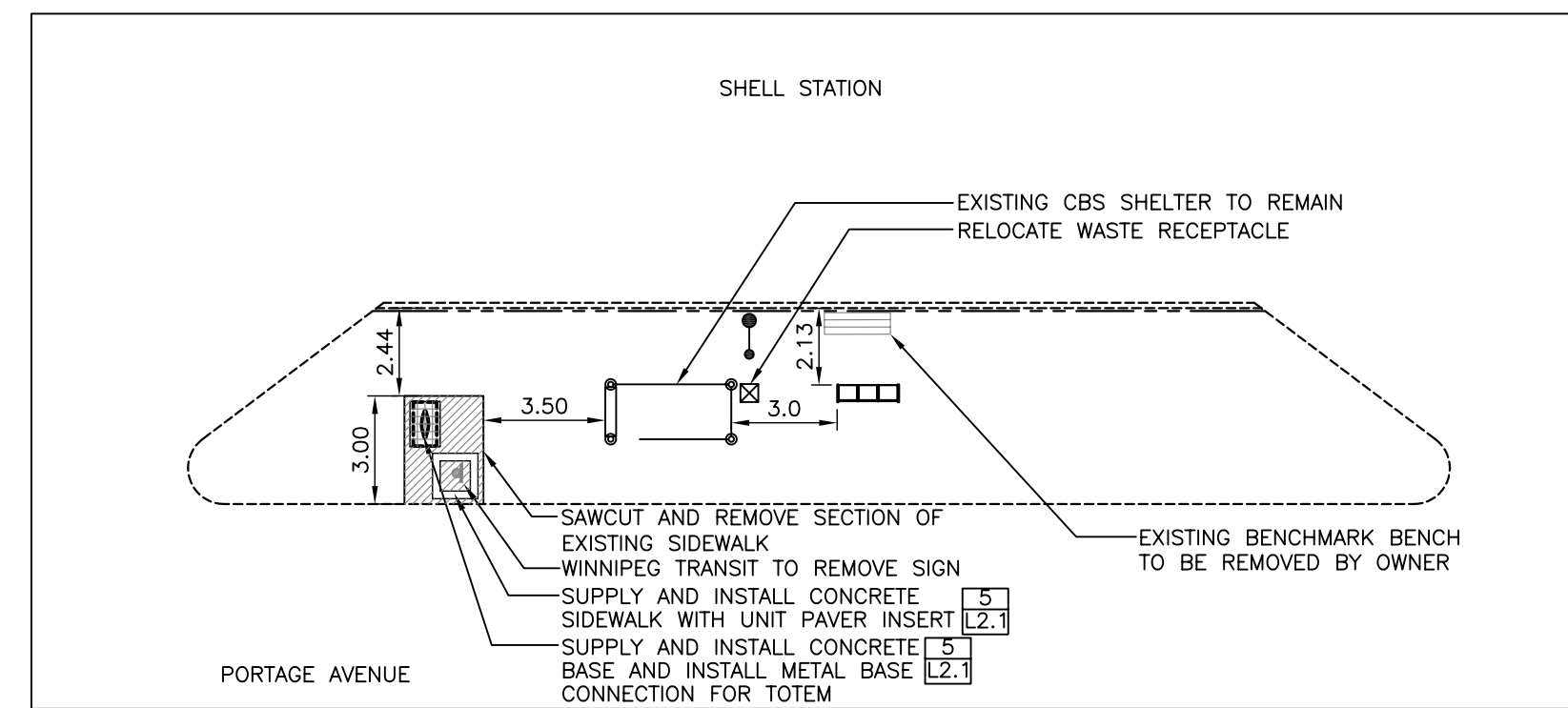
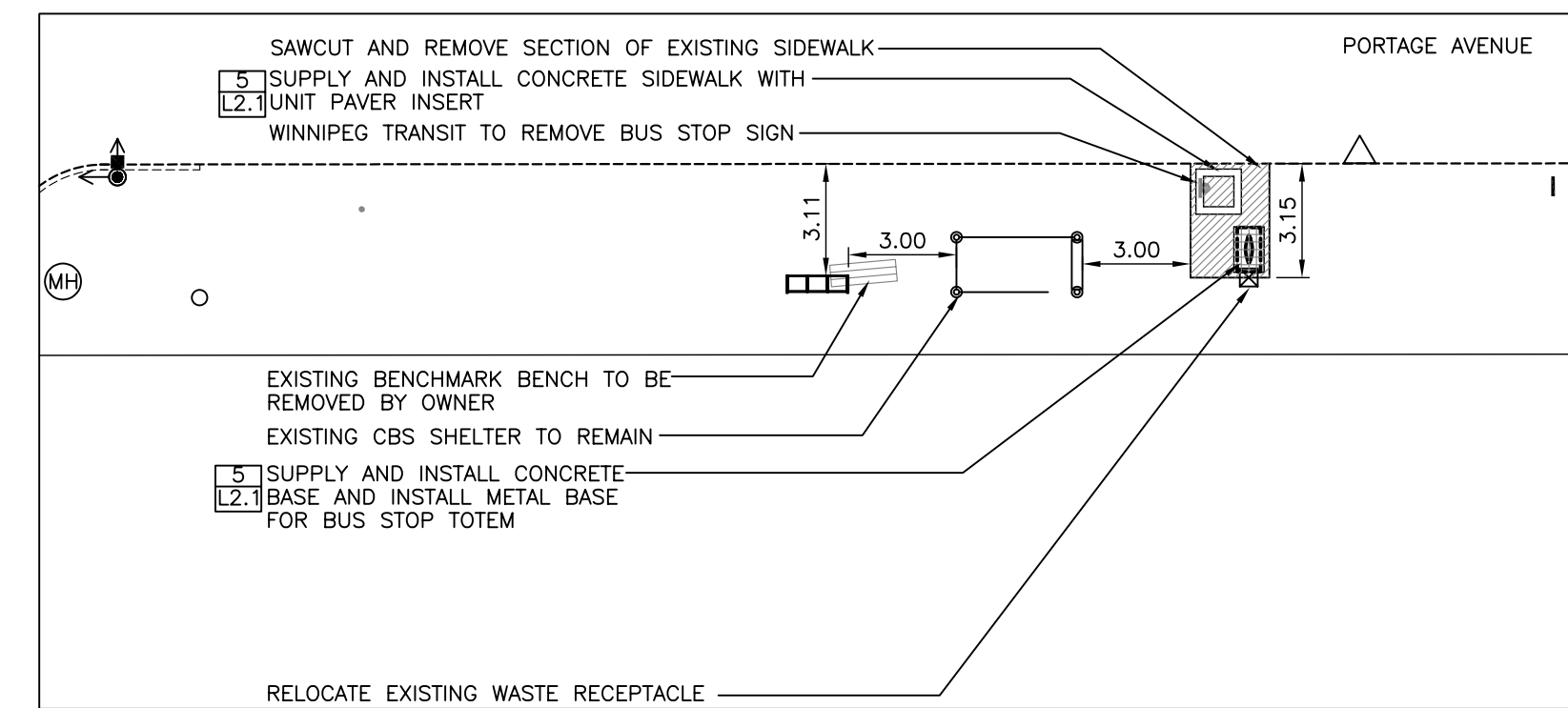


Eastbound Portage, N/S Maryland
Stop 10576 Maryland

MONOLITHIC PAVEMENT/CURB
BLACK SHELTER #648



Westbound Portage, N/S McGee
Stop 10549 Maryland



Westbound Portage, F/S Sherbrook
Stop 10577 Sherbrook



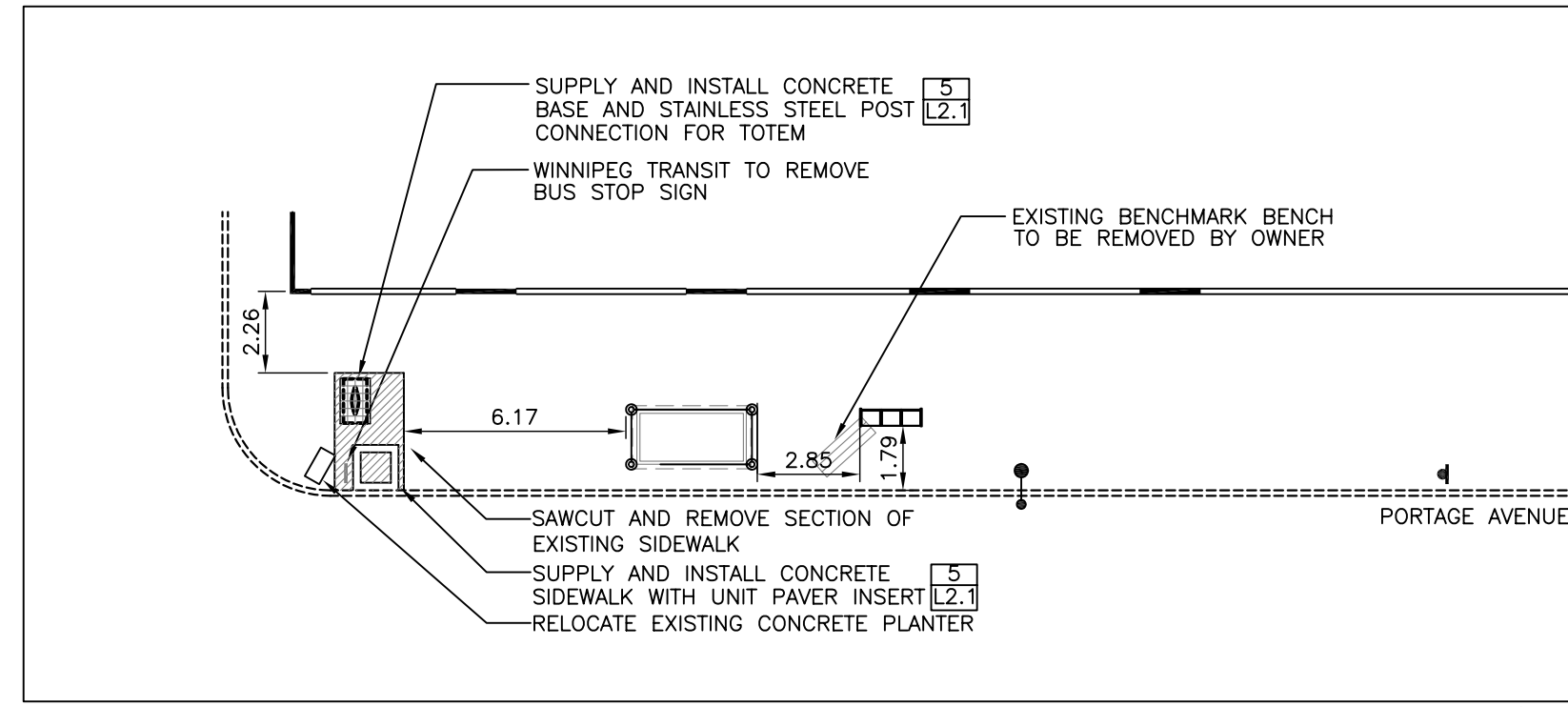
LEGEND

EXISTING

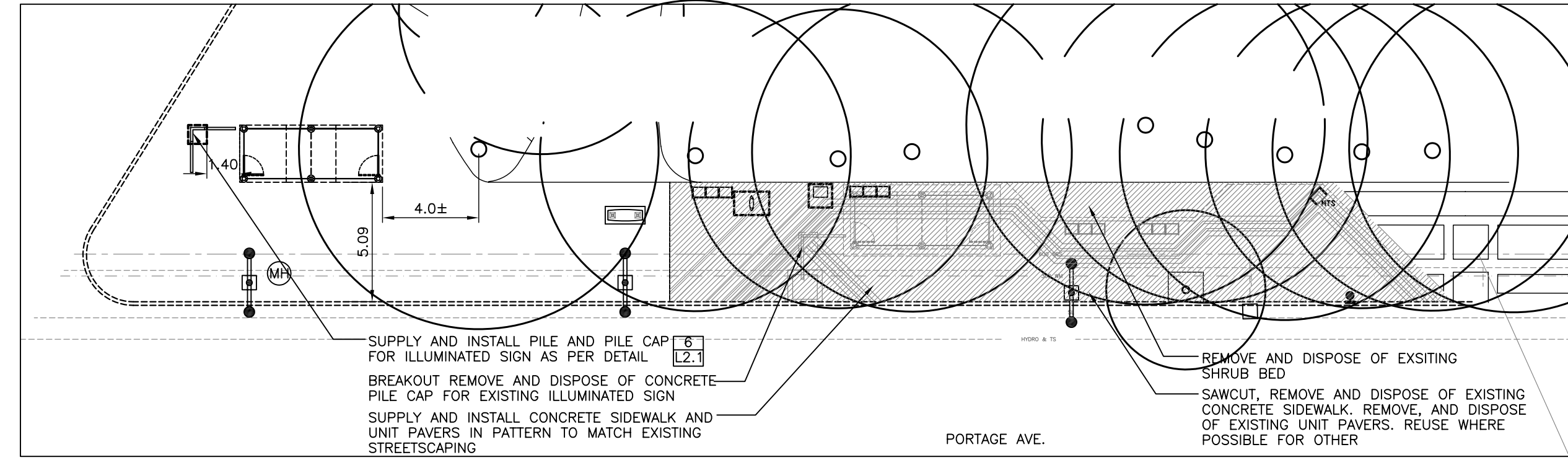
- PROPERTY LINE
- EXISTING CURB
- EXISTING COBRA LIGHT POLE
- EXISTING HYDRANT
- BENCH TO BE REMOVED
- MTS PHONE BOOTH
- WASTE RECEPTACLE
- EXISTING TREE TO REMAIN
- EXISTING SIDEWALK TO BE REMOVED
- EXISTING SIGN TO BE REMOVED
- EXISTING TRAFFIC SIGNAL
- EXISTING MAN HOLE

PROPOSED

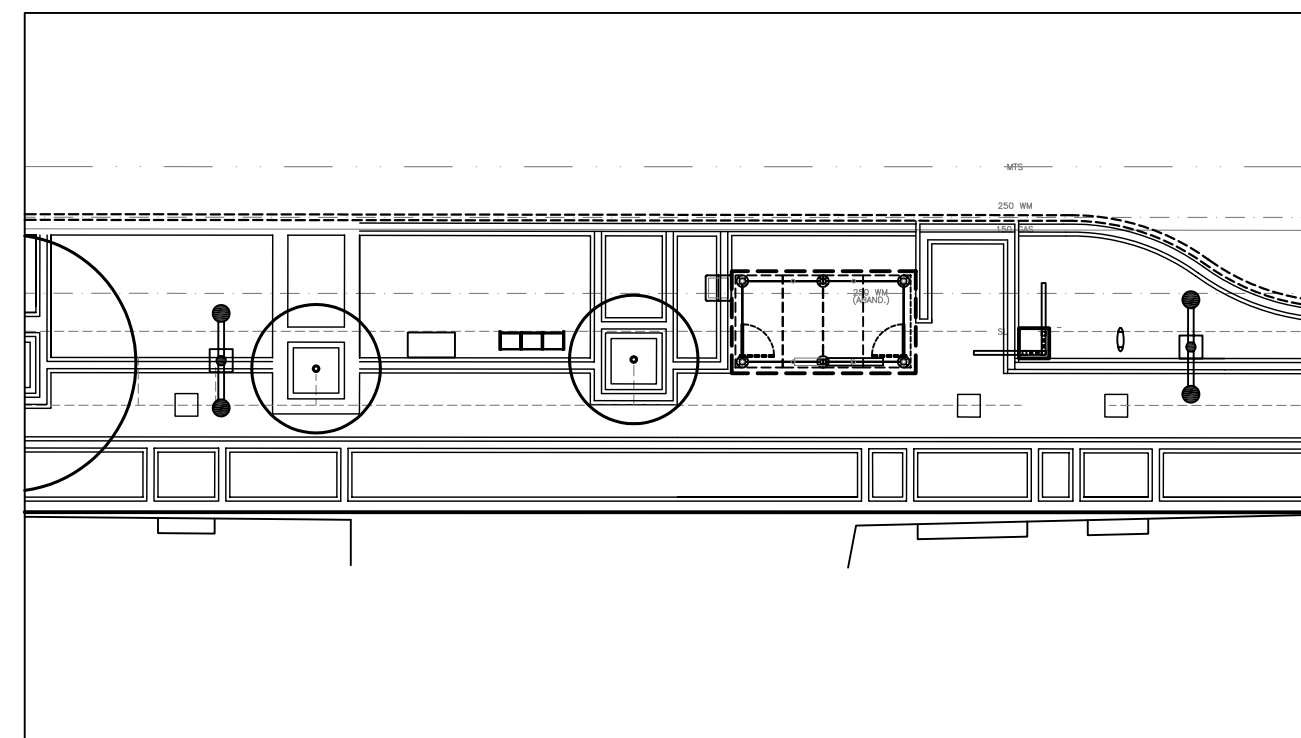
- HOLLAND PAVERS
- PINNED CONCRETE CURB / CURB RENEWAL
- CONCRETE SIDEWALK
- SOD
- ILLUMINATED TRANSIT SIGN
- BUS STOP TOTEM
- BUS STOP FLAG
- TRANSIT INFORMATION POSTER KIOSK (TIP KIOSK)
- BENCH WITH BACK
- BACKLESS BENCH



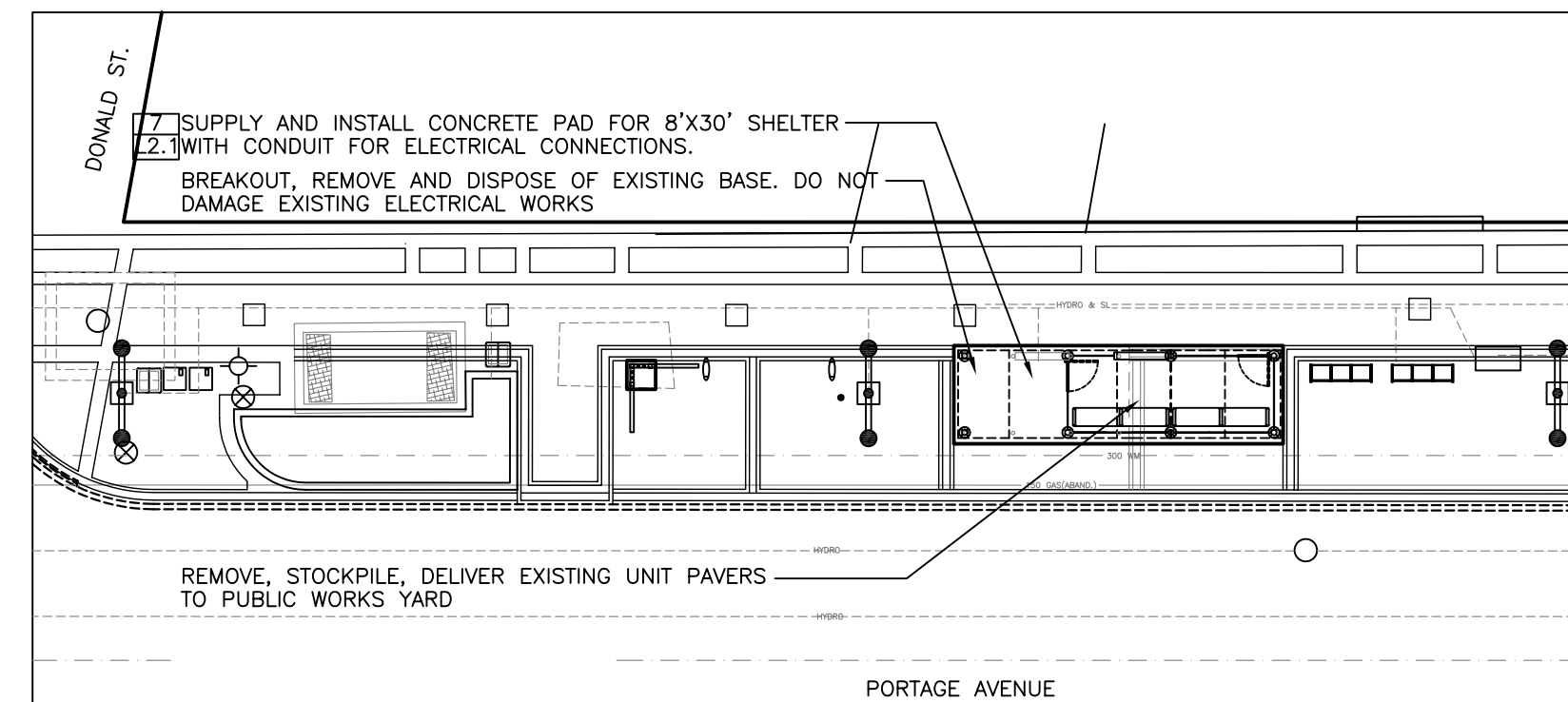
Westbound Portage, N/S Sherbrook
Stop 10548 Sherbrook



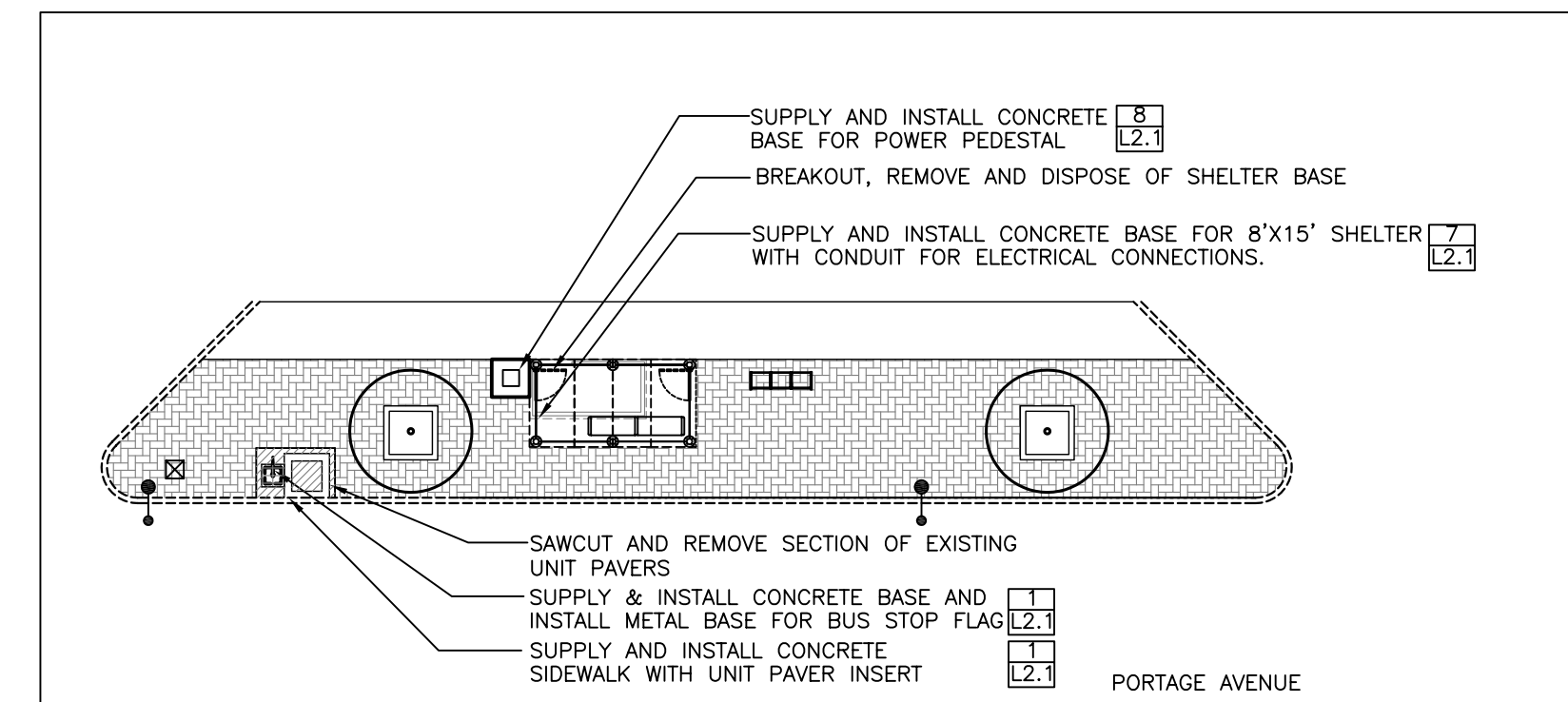
Westbound Portage, N/S Spence
Stop 10546 Spence



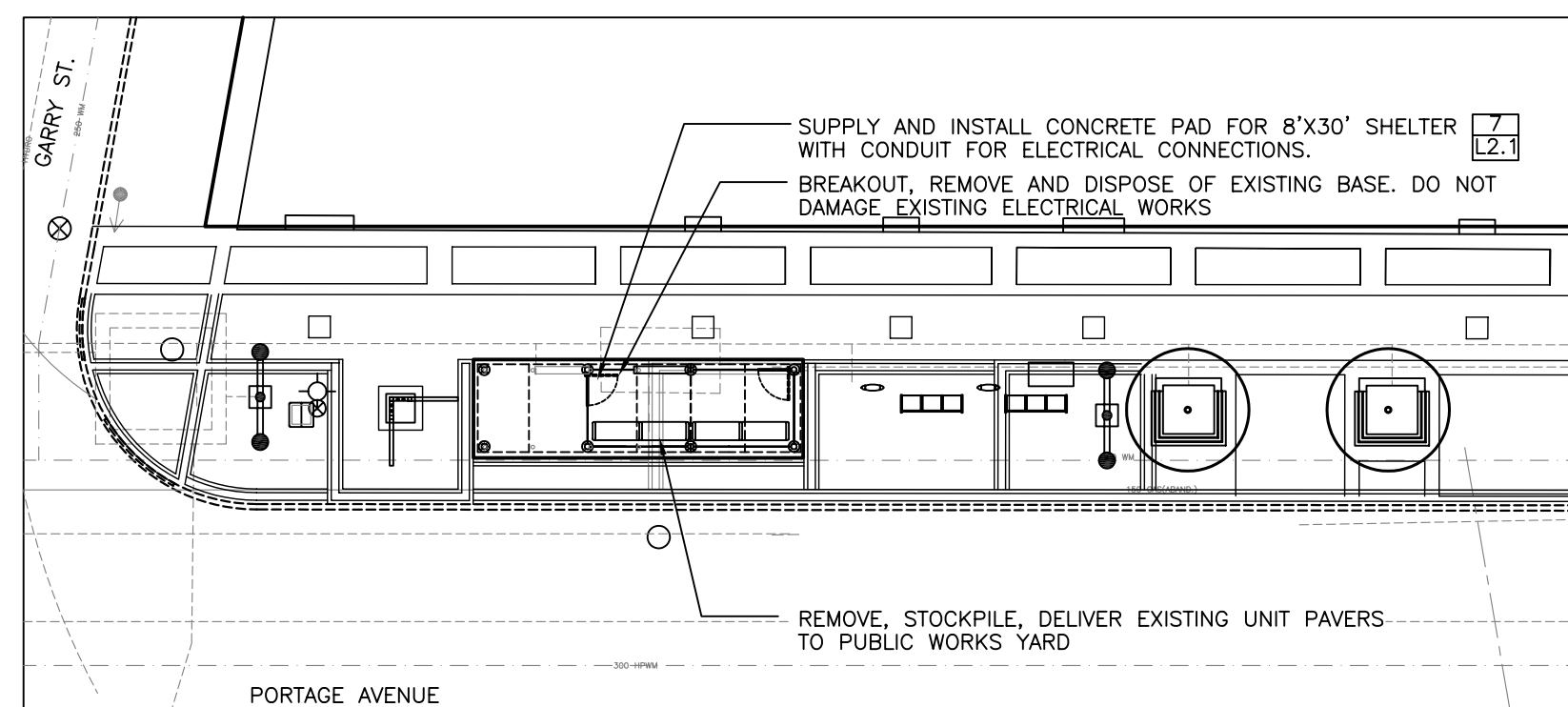
Eastbound Portage, N/S Edmonton
Stop 10581 Edmonton



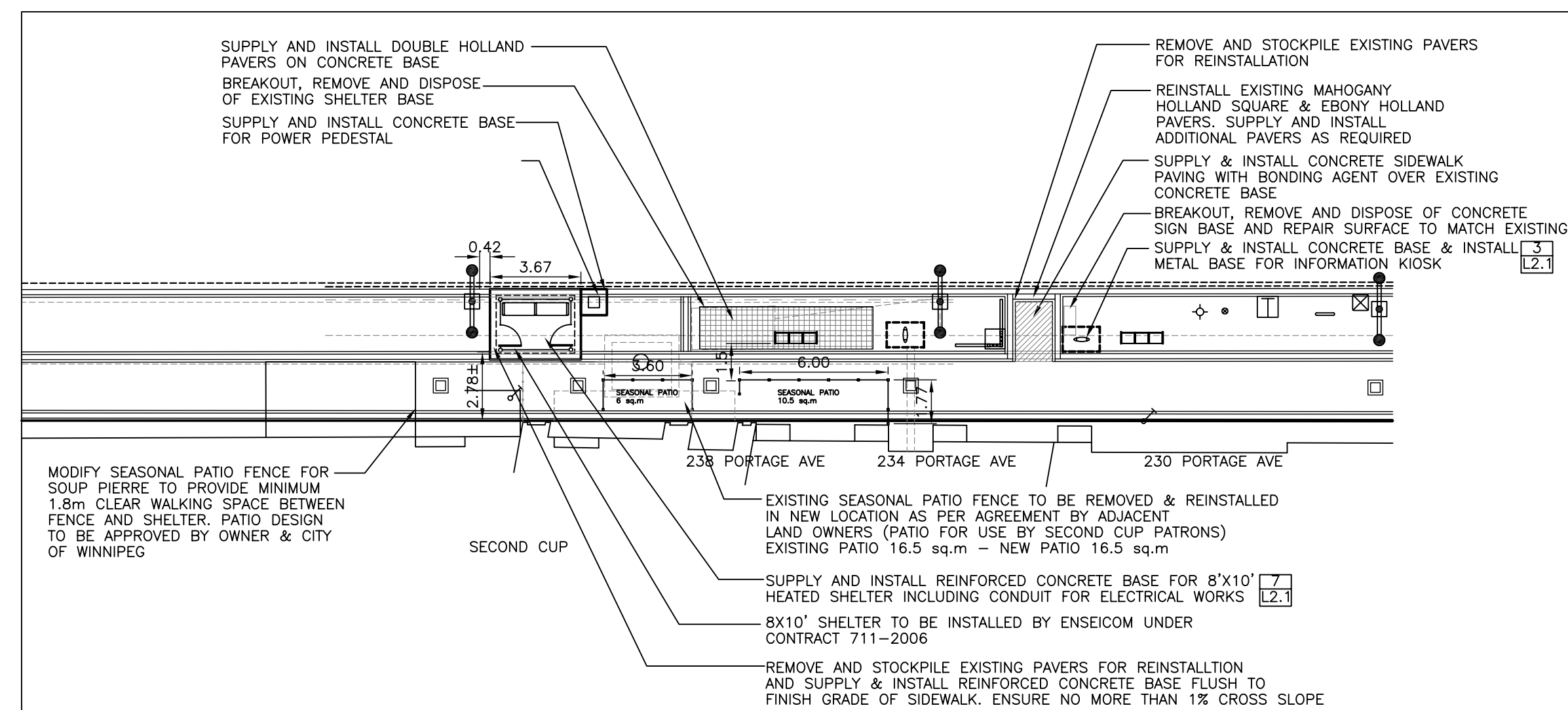
Westbound Portage, N/S Donald
Stop 10542 (MTS Centre)



Eastbound Portage, N/S Langside
Stop 10578 Langside



Westbound Portage, N/S Garry
Stop 10541 Garry



Eastbound Portage, N/S Fort
Stop 10583 Fort



No.	Revisions	Date	By
26-02-08	1:200		
Designed By	Drawn By	Checked By	
JW	SAS	JW	



WINNIPEG TRANSIT
Project Title
**BUS STOP UPGRADE
PROGRAM PHASE 3
SITE WORKS**

Sheet Title
**PORTAGE AVENUE STOPS
LAYOUT PLANS 4 OF 4**
Project No. 06-029
Drawing No. L1.4