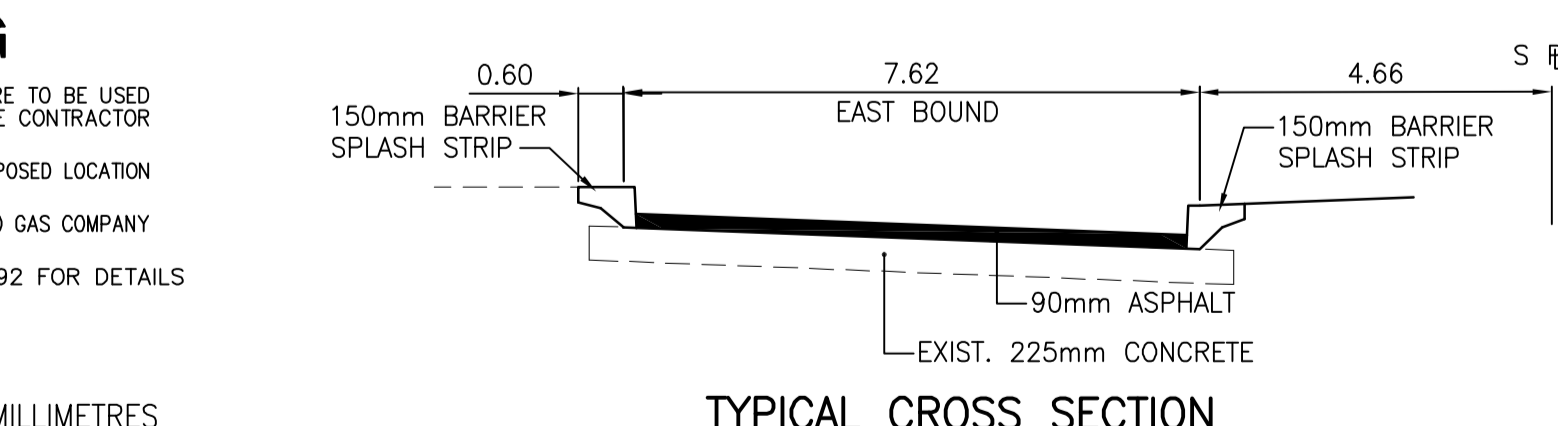
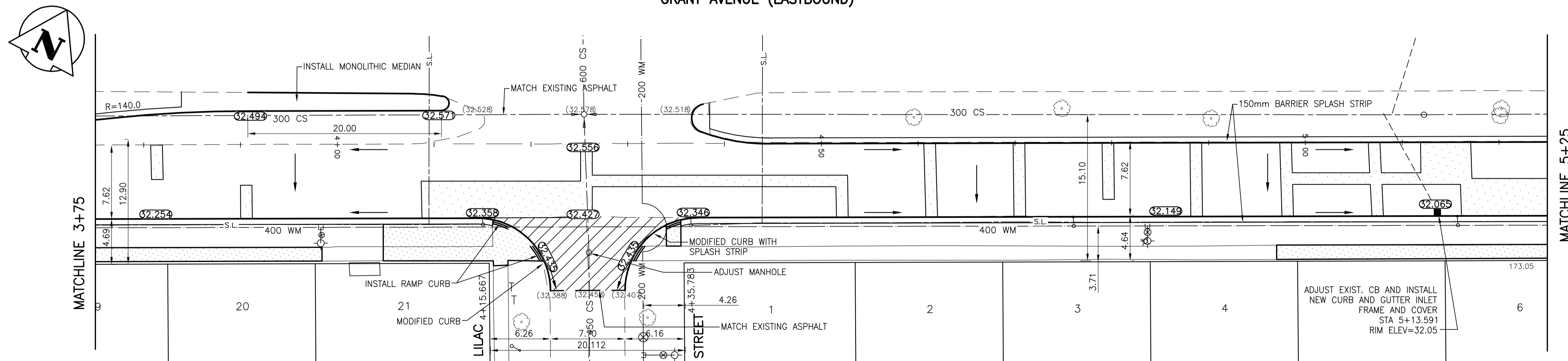


GRANT AVENUE (EASTBOUND)



WARNING

IF POWER EQUIPMENT OR EXPLOSIVES ARE TO BE USED FOR EXCAVATION ON THIS PROJECT THE CONTRACTOR MUST:
 1) NOTIFY THE GAS COMPANY OF THE PROPOSED LOCATION OF EXCAVATION.
 2) TAKE PRECAUTION TO AVOID DAMAGE TO GAS COMPANY INSTALLATIONS.
 SEE PROVINCIAL REGULATION 140/92 FOR DETAILS

METRIC

WHOLE NUMBERS INDICATE MILLIMETRES
 DECIMALIZED NUMBERS INDICATE METRES

EXISTING	LEGEND-PLAN	PROPOSED	EXISTING	LEGEND-PLAN	PROPOSED	EXISTING	LEGEND-PROFILE	PROPOSED
150 WM	WATERMAIN	150 WM	HYDRO	M.T.S.	HYDRO	150 WM	WATERMAIN	150 WM
300 LDS	LAND DRAINAGE SEWER	300 LDS	CONCRETE	ASPHALT	CONCRETE	300 LDS	LAND DRAINAGE SEWER	300 LDS
250 WWS	WASTE WATER SEWER	250 WWS	SIDEWALK	PROPERTY LINE	SIDEWALK	250 WWS	WASTE WATER SEWER	250 WWS
MANHOLE	CATCH BASIN	MANHOLE	SURVEY BAR	DITCH	SURVEY BAR	MANHOLE	NORTH OR WEST GUTTER	MANHOLE
CURB INLET	JUNCTIONS	CURB INLET	ELEVATION	SIDEWALK RAMP	ELEVATION	CURB INLET	SOUTH OR EAST GUTTER	CURB INLET
CULVERT	GAS	CULVERT	SIDEWALK RAMP	SIDEWALK RAMP	SIDEWALK RAMP	CULVERT	NORTH OR WEST DITCH	CULVERT
EXISTING	LEGEND-PLAN	PROPOSED	EXISTING	LEGEND-PLAN	PROPOSED	EXISTING	LEGEND-PROFILE	PROPOSED

LOCATION APPROVED UNDERGROUND STRUCTURES

SUPV. U/G STRUCTURES	DATE

NOTE:
 LOCATION OF UNDERGROUND STRUCTURES AS SHOWN ARE BASED ON THE BEST INFORMATION AVAILABLE BUT NO GUARANTEE IS GIVEN THAT ALL EXISTING UTILITIES ARE SHOWN OR THAT THE GIVEN LOCATIONS ARE EXACT. CONFIRMATION OF EXISTENCE AND EXACT LOCATION OF ALL SERVICES MUST BE OBTAINED FROM THE INDIVIDUAL UTILITIES BEFORE PROCEEDING WITH CONSTRUCTION.

NO.	REVISIONS	DATE	BY
1	ISSUED FOR TENDER	08.03.14	K.A.R.
0	ISSUED FOR REVIEW	08.01.27	T.G.

Stantec Consulting Ltd.
 905 Waverley Street, Winnipeg, Manitoba
 Tel 204-489-5900 Fax 204-453-9012

DESIGNED BY	S.R.S.	CHECKED BY	V.M.M.
DRAWN BY	T.G.	APPROVED BY	K.A.R.
HOR. SCALE:	1:250	RELEASED FOR CONSTRUCTION:	P. PAUL
VERTICAL:	1:10	DATE	MARCH 11, 2008

ENGINEER'S SEAL
 ORIGINAL SEALED BY
 K.A. ROSIN
 P. ENG.
 08.10.11
 CONSULTANT DRAWING NO.
C-203

THE CITY OF WINNIPEG
 PUBLIC WORKS DEPARTMENT
 TRANSPORTATION ENGINEERING DIVISION

GRANT AVENUE (EASTBOUND)
 STAFFORD STREET TO PEMBINA HIGHWAY
 STA. 3+75 TO STA. 5+25
 CONCRETE REPAIRS AND ASPHALT OVERLAY

SHEET **3** OF **5**
 CAD FILE DRAWING NUMBER
 04810C-201-696.DWG
 CITY DRAWING NUMBER
P-3291-03

V:\1137\rev\1137048\01\drawing\ACZ_design\sheet\1137048-201-696.dwg
 2008-03-11 10:00PM By: tgal