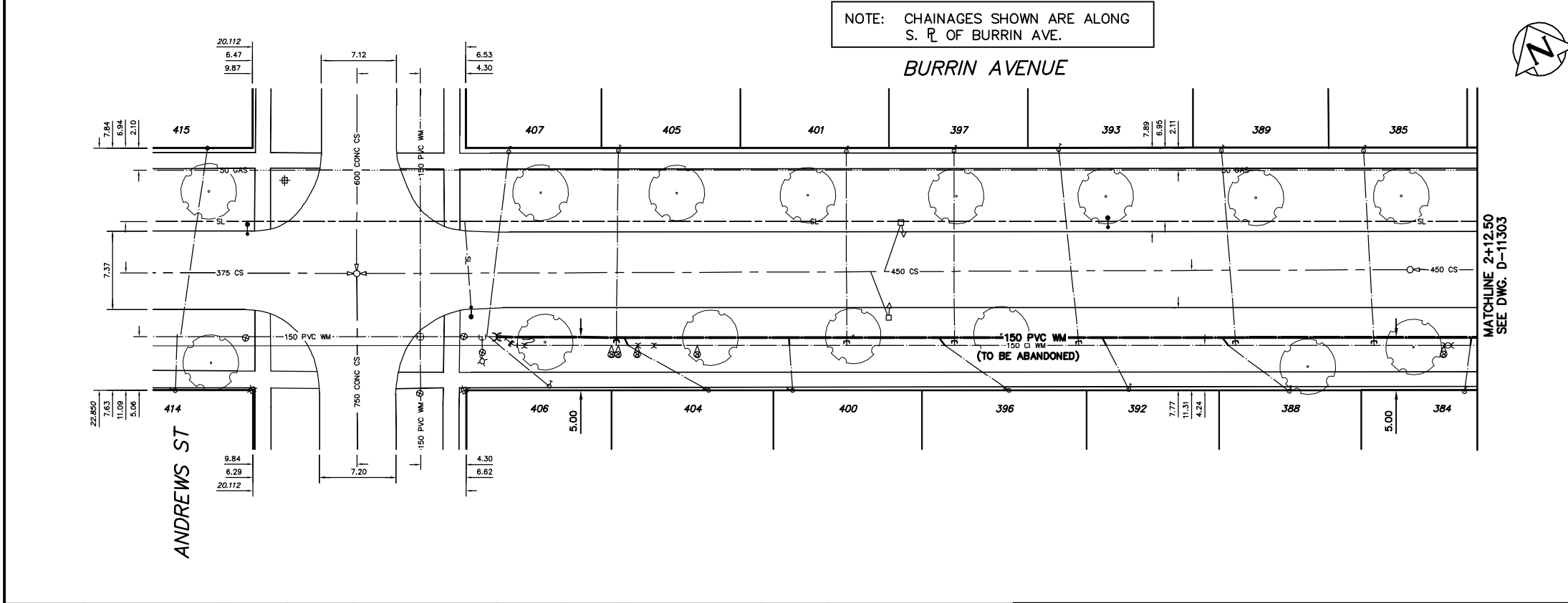


WATER SERVICE INFORMATION					
ADDRESS	SIZE(mm) & TYPE (STREET)	SIZE(mm) & TYPE (PROP)	SHORT & LONG MEASUREMENT	CORP. LOCATION	REMARKS
384 BURRIN AVE	20 COPPER	20 COPPER	4.17 WEL HSE	0.55 E OF S/C	-
385 BURRIN AVE	20 COPPER	20 COPPER	94.15 EEL ANDREWS	-	-
RESIDENTIAL	20 COPPER	20 COPPER	1.34 EW HSE	-	EXACT CORP LOCATION UNKNOWN
389 BURRIN AVE	20 COPPER	20 COPPER	84.64 EEL ANDREWS	-	-
RESIDENTIAL	20 COPPER	20 COPPER	4.97 EW HSE	5.80 W OF S/C	-
389 BURRIN AVE	20 COPPER	20 COPPER	77.69 EEL ANDREWS	-	-
RESIDENTIAL	20 COPPER	20 COPPER	1.17 EW HSE	-	EXACT CORP LOCATION UNKNOWN
392 BURRIN AVE	20 COPPER	20 COPPER	71.21 EEL ANDREWS	-	-
RESIDENTIAL	20 COPPER	20 COPPER	1.95 EW HSE	2.10 W OF S/C	-
393 BURRIN AVE	20 COPPER	20 COPPER	62.45 EEL ANDREWS	-	-
RESIDENTIAL	20 COPPER	20 COPPER	1.10 EW HSE	-	EXACT CORP LOCATION UNKNOWN
393 BURRIN AVE	20 COPPER	20 COPPER	55.85 EEL ANDREWS	-	-
RESIDENTIAL	20 COPPER	20 COPPER	6.10 WEL HSE	6.0 W OF S/C	-
396 BURRIN AVE	20 COPPER	20 COPPER	51.15 EEL ANDREWS	-	-
RESIDENTIAL	20 COPPER	20 COPPER	4.18 EW HSE	OPP S/C	-
397 BURRIN AVE	20 COPPER	20 COPPER	46.04 EEL ANDREWS	-	-
RESIDENTIAL	20 COPPER	20 COPPER	0.20 EW HSE	0.30 W OF S/C	-
400 BURRIN AVE	20 COPPER	20 COPPER	30.72 EEL ANDREWS	-	-
RESIDENTIAL	20 COPPER	20 COPPER	2.44 WEL HSE	OPP S/C	-
401 BURRIN AVE	20 COPPER	20 COPPER	35.90 EEL ANDREWS	-	-
RESIDENTIAL	20 COPPER	20 COPPER	4.81 WEL HSE	7.60 W OF S/C	-
404 BURRIN AVE	20 COPPER	20 COPPER	22.78 EEL ANDREWS	-	-
RESIDENTIAL	20 COPPER	20 COPPER	0.23 WEL HSE	0.15 W OF S/C	-
405 BURRIN AVE	20 COPPER	20 COPPER	14.40 EEL ANDREWS	-	-
RESIDENTIAL	20 COPPER	20 COPPER	3.87 WEL HSE	5.62 W OF S/C	-
406 BURRIN AVE	20 COPPER	20 COPPER	7.85 EEL ANDREWS	-	-
RESIDENTIAL	20 COPPER	20 COPPER	1.79 EW HSE	2.81 W OF S/C	-
407 BURRIN AVE	20 COPPER	20 COPPER	4.01 EEL ANDREWS	-	-

* SERVICES TO BE RENEWED TO \varnothing UPON CONFIRMATION BY THE CONTRACTOR OF EXISTING 1/2" COPPER OR LEAD SERVICE. OBTAIN APPROVAL FROM CONTRACT ADMINISTRATOR PRIOR TO RENEWAL.

NOTE: CHAINAGES SHOWN ARE ALONG S. \varnothing OF BURRIN AVE.



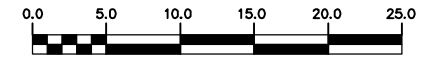
- CONSTRUCTION NOTES**
1. EXPOSE EXISTING WATERMAIN & CONFIRM INVERTS PRIOR TO CONSTRUCTION.
 2. CONFIRM LOCATION OF ALL SERVICES IN THE FIELD.
 3. INSTALL WATERMAIN BY TRENCHLESS METHODS.
 4. TRENCHES AND EXCAVATIONS WITHIN 1 METRE OF A PAVED AREA INCLUDING SIDEWALKS SHALL BE CLASS 3 BACKFILL.
 5. ALL MATERIALS SHALL CONFORM TO THE CITY OF WINNIPEG STANDARD CONSTRUCTION SPECIFICATIONS.
 6. MINIMUM COVER TO TOP OF WATERMAIN SHALL BE 2.4 m.
 7. REPLACE ALL EXISTING LEAD SERVICES FROM PROPOSED WATERMAIN TO \varnothing .
 8. NOTIFY ALL AFFECTED RESIDENTS AND BUSINESSES 24 HOURS IN ADVANCE OF ANY WATER SHUTDOWNS OR DISRUPTION OF SERVICE.
 9. EXCAVATIONS TO BE LOCATED AWAY FROM EXISTING TREE'S.

METRIC
WHOLE NUMBERS INDICATE MILLIMETRES
DECIMALIZED NUMBERS INDICATE METRES

NOTE: ALL VALVES TO BE INSTALLED CLOCKWISE TO CLOSE

WARNING

IF POWER EQUIPMENT OR EXPLOSIVES ARE TO BE USED FOR EXCAVATION ON THIS PROJECT THE CONTRACTOR MUST:
1) NOTIFY THE GAS COMPANY OF THE PROPOSED LOCATION OF EXCAVATION.
2) TAKE PRECAUTION TO AVOID DAMAGE TO GAS COMPANY INSTALLATIONS.
SEE PROVINCIAL REGULATION 210/72 FOR DETAILS



200 WM	WATERMAIN	200 WM	SL, HYDRO	150 WM	WATERMAIN	150 WM
⊕	HYDRANT	⊕	MTS	+	HYDRANT	+
⊙	VALVE	⊙	TRAFFIC SIGNALS	×	VALVE	×
525 LDS	LAND DRAINAGE SEWER	525 LDS	GAS	50 GAS	300 LDS	LAND DRAINAGE SEWER
375 WWS	WASTEWATER SEWER	375 WWS	SURVEY BAR	250 WWS	WASTEWATER SEWER	250 WWS
○	MANHOLE	●	FENCE	⊖	PROFILE	⊖
□	CATCH BASIN	■	POLE - HYDRO, MTS	=====	GROUND ABOVE PIPE	=====
▽	CURB INLET	▽	CURB STOP	⊖	DITCH (NORTH & WEST)	⊖
∇	REDUCER	∇	GUY ANCHOR	⊖	DITCH (SOUTH & EAST)	⊖
X	COUPLER	X	LIGHT STANDARD	⊖	GUTTER (NORTH & WEST)	⊖
⊖	ANODE	⊖	TREE	⊖	GUTTER (SOUTH & EAST)	⊖
EXISTING	LEGEND-PLAN	PROPOSED	EXISTING	LEGEND-PLAN	PROPOSED	EXISTING
EXISTING	LEGEND-PROFILE	PROPOSED	EXISTING	LEGEND-PROFILE	PROPOSED	EXISTING

LOCATION APPROVED UNDERGROUND STRUCTURES

SUPV. U/G STRUCTURES COMMITTEE DATE

NOTE:
LOCATION OF UNDERGROUND STRUCTURES AS SHOWN ARE BASED ON THE BEST INFORMATION AVAILABLE BUT NO GUARANTEE IS GIVEN THAT ALL EXISTING UTILITIES ARE SHOWN OR THAT THE GIVEN LOCATIONS ARE EXACT. CONFIRMATION OF EXISTENCE AND EXACT LOCATION OF ALL SERVICES MUST BE OBTAINED FROM THE INDIVIDUAL UTILITIES BEFORE PROCEEDING WITH CONSTRUCTION.

B.M. ELEV. FIELD BOOK #

POSTED TO LIS

NO. REVISIONS DATE BY

CITY OF WINNIPEG
WATER AND WASTE
ENGINEERING DIVISION

DESIGNED BY MEK CHECKED BY NC
DRAWN BY C/JH APPROVED BY KZ

HOR. SCALE 1:250
VERTICAL SCALE 1:50

RELEASED FOR CONSTRUCTION
SIGNED BY K. ZUREK
DATE 2008 03 20

ENGINEER'S SEAL

ORIGINAL SIGNED BY K.R. ZUREK 08/03/20

BID OPPORTUNITY: 225-2008
FILENAME: D-11302.dwg
PLOT DATE: 2008 03 20

THE CITY OF WINNIPEG
WATER AND WASTE DEPARTMENT

2008 WATERMAIN RENEWALS
CONTRACT 1
BURRIN AVENUE
ANDREWS STREET TO
95 E OF ANDREWS STREET

SHEET 1 OF 16
CITY DRAWING NUMBER
D-11302