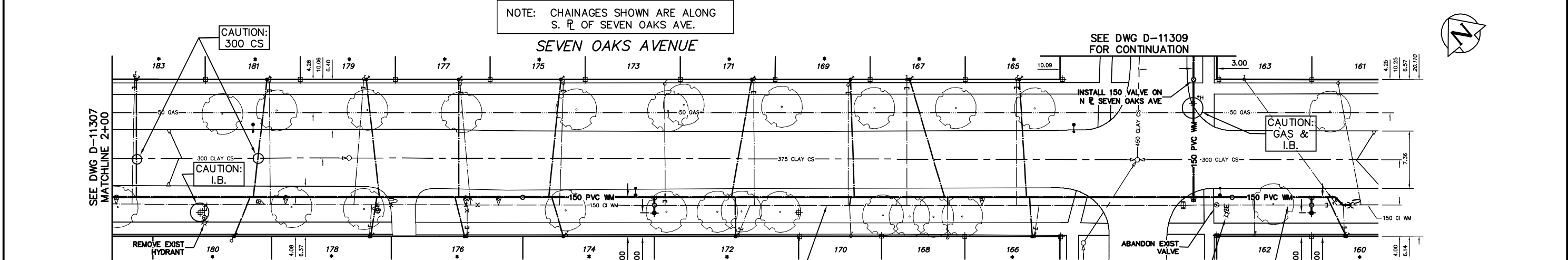


NOTE: CHAINAGES SHOWN ARE ALONG S. R. OF SEVEN OAKS AVE.



WATER SERVICE INFORMATION

ADDRESS	SIZE(mm) & TYPE (STREET)	SIZE(mm) & TYPE (PROP)	SHORT & LONG MEASUREMENT	CORP. LOCATION	REMARKS
160 SEVEN OAKS AVE	16	20	1.76 EWL HSE	0.15 W OF S/C	-
RESIDENTIAL	LEAD	COPPER	16.41 EEL JONES		
161 SEVEN OAKS AVE	16	20	3.15 EWL HSE	2.95 E OF S/C	-
RESIDENTIAL	LEAD	COPPER	19.66 EEL JONES		
162 SEVEN OAKS AVE	20	-	2.90 EWL HSE	OPP S/C	-
RESIDENTIAL	COPPER	-	4.87 EEL JONES		
163 SEVEN OAKS AVE	20	20	2.71 EWL HSE	11.8 E OF S/C	-
RESIDENTIAL	COPPER	COPPER	3.51 EEL JONES		
165 SEVEN OAKS AVE	16	-	3.49 WEL HSE	OPP S/C	-
RESIDENTIAL	LEAD	-	5.61 WML JONES		
166 SEVEN OAKS AVE	16	20	0.59 WEL HSE	0.7 E OF S/C	-
RESIDENTIAL	LEAD	COPPER	3.26 WML JONES		
167 SEVEN OAKS AVE	16	20	3.22 WEL HSE	OPP S/C	-
RESIDENTIAL	LEAD	COPPER	19.66 WML JONES		
168 SEVEN OAKS AVE	20	20	0.23 EEL HSE	OPP S/C	-
RESIDENTIAL	COPPER	COPPER	14.43 WML JONES		
169 SEVEN OAKS AVE	16	-	1.32 WEL HSE	OPP S/C	-
RESIDENTIAL	LEAD	-	27.13 WML JONES		
170 SEVEN OAKS AVE	20	12	1.84 WEL HSE	0.15 W OF S/C	-
RESIDENTIAL	COPPER	LEAD	27.13 WML JONES		

WATER SERVICE INFORMATION

ADDRESS	SIZE(mm) & TYPE (STREET)	SIZE(mm) & TYPE (PROP)	SHORT & LONG MEASUREMENT	CORP. LOCATION	REMARKS
171 SEVEN OAKS AVE	16	-	1.50 WEL HSE	OPP S/C	-
RESIDENTIAL	LEAD	-	39.26 WML JONES		
172 SEVEN OAKS AVE	16	-	6.22 WEL HSE	1.6 E OF S/C	-
RESIDENTIAL	LEAD	-	41.76 WML JONES		
173 SEVEN OAKS AVE	20	20	0.50 EEL HSE	OPP S/C	-
RESIDENTIAL	COPPER	COPPER	50.89 WML JONES		
174 SEVEN OAKS AVE	-	-	2.68 EWL HSE	-	-
RESIDENTIAL	-	-	62.78 WML JONES		
175 SEVEN OAKS AVE	16	-	1.64 WEL HSE	0.5 W OF S/C	-
RESIDENTIAL	LEAD	-	64.09 WML JONES		
176 SEVEN OAKS AVE	16	-	4.52 WEL HSE	OPP S/C	-
RESIDENTIAL	LEAD	-	75.77 WML JONES		
177 SEVEN OAKS AVE	16	-	1.84 WEL HSE	1.4 E OF S/C	-
RESIDENTIAL	COPPER	-	77.27 WML JONES		

* SERVICES TO BE RENEWED TO R UPON CONFIRMATION BY THE CONTRACTOR OF EXISTING 1/2" COPPER OR LEAD SERVICE. OBTAIN APPROVAL FROM CONTRACT ADMINISTRATOR PRIOR TO RENEWAL.

WATER SERVICE INFORMATION

ADDRESS	SIZE(mm) & TYPE (STREET)	SIZE(mm) & TYPE (PROP)	SHORT & LONG MEASUREMENT	CORP. LOCATION	REMARKS
178 SEVEN OAKS AVE	16	-	1.15 WEL HSE	0.25 E OF S/C	-
RESIDENTIAL	LEAD	-	88.52 WML JONES		
179 SEVEN OAKS AVE	16	-	2.93 WEL HSE	1.25 W OF S/C	-
RESIDENTIAL	COPPER	-	89.69 WML JONES		
180 SEVEN OAKS AVE	-	-	3.31 WEL HSE	-	-
RESIDENTIAL	-	-	106.19 WML JONES		
181 SEVEN OAKS AVE	16	-	2.52 WEL HSE	0.1 E OF S/C	-
RESIDENTIAL	LEAD	-	101.88 WML JONES		
183 SEVEN OAKS AVE	16	-	0.48 EWL HSE	0.35 W OF S/C	-
RESIDENTIAL	LEAD	-	118.74 WML JONES		

METRIC
WHOLE NUMBERS INDICATE MILLIMETRES
DECIMALIZED NUMBERS INDICATE METRES

NOTE: ALL VALVES TO BE INSTALLED CLOCKWISE TO CLOSE

WARNING
IF POWER EQUIPMENT OR EXPLOSIVES ARE TO BE USED FOR EXCAVATION ON THIS PROJECT THE CONTRACTOR MUST:
1) NOTIFY THE GAS COMPANY OF THE PROPOSED LOCATION OF EXCAVATION.
2) TAKE PRECAUTION TO AVOID DAMAGE TO GAS COMPANY INSTALLATIONS.
SEE PROVINCIAL REGULATION 210/72 FOR DETAILS

FOR CONSTRUCTION NOTES
SEE DRAWING D-11307

Scale: 0.0 5.0 10.0 15.0 20.0 25.0

EXISTING	LEGEND-PLAN	PROPOSED	EXISTING	LEGEND-PLAN	PROPOSED	EXISTING	LEGEND-PROFILE	PROPOSED	
200 WM	WATERMAIN	200 WM	150 WM	WATERMAIN	150 WM	50 GAS	GAS	300 LDS	LAND DRAINAGE SEWER
525 LDS	LAND DRAINAGE SEWER	525 LDS	375 WWS	WASTEWATER SEWER	375 WWS	250 WWS	WASTEWATER SEWER	250 WWS	WASTEWATER SEWER
375 WWS	WASTEWATER SEWER	375 WWS	250 WWS	WASTEWATER SEWER	250 WWS	250 WWS	WASTEWATER SEWER	250 WWS	WASTEWATER SEWER
○	MANHOLE	●	○	MANHOLE	●	○	MANHOLE	●	MANHOLE
□	CATCH BASIN	■	□	CATCH BASIN	■	□	CATCH BASIN	■	CATCH BASIN
▽	CURB INLET	▽	▽	CURB INLET	▽	▽	CURB INLET	▽	CURB INLET
∇	REDUCER	∇	∇	REDUCER	∇	∇	REDUCER	∇	REDUCER
X	COUPLER	X	X	COUPLER	X	X	COUPLER	X	COUPLER
⊕	ANODE	⊕	⊕	ANODE	⊕	⊕	ANODE	⊕	ANODE
—	SL - HYDRO	—	—	SL - HYDRO	—	—	SL - HYDRO	—	SL - HYDRO
⊕	TRAFFIC SIGNALS	⊕	⊕	TRAFFIC SIGNALS	⊕	⊕	TRAFFIC SIGNALS	⊕	TRAFFIC SIGNALS
—	GAS	—	—	GAS	—	—	GAS	—	GAS
—	SURVEY BAR	—	—	SURVEY BAR	—	—	SURVEY BAR	—	SURVEY BAR
—	FENCE	—	—	FENCE	—	—	FENCE	—	FENCE
—	POLE - HYDRO, MTS	—	—	POLE - HYDRO, MTS	—	—	POLE - HYDRO, MTS	—	POLE - HYDRO, MTS
—	CURB STOP	—	—	CURB STOP	—	—	CURB STOP	—	CURB STOP
—	GUY ANCHOR	—	—	GUY ANCHOR	—	—	GUY ANCHOR	—	GUY ANCHOR
—	LIGHT STANDARD	—	—	LIGHT STANDARD	—	—	LIGHT STANDARD	—	LIGHT STANDARD
—	TREE	—	—	TREE	—	—	TREE	—	TREE

LOCATION APPROVED
UNDERGROUND STRUCTURES

SUPV. U/G STRUCTURES COMMITTEE DATE

NOTE:
LOCATION OF UNDERGROUND STRUCTURES AS SHOWN ARE BASED ON THE BEST INFORMATION AVAILABLE BUT NO GUARANTEE IS GIVEN THAT ALL EXISTING UTILITIES ARE SHOWN OR THAT THE GIVEN LOCATIONS ARE EXACT. CONFIRMATION OF EXISTENCE AND EXACT LOCATION OF ALL SERVICES MUST BE OBTAINED FROM THE INDIVIDUAL UTILITIES BEFORE PROCEEDING WITH CONSTRUCTION.

CITY OF WINNIPEG
WATER AND WASTE ENGINEERING DIVISION

DESIGNED BY: DB
CHECKED BY: NC
DRAWN BY: C/JH
APPROVED BY: KZ

HOR. SCALE: 1:250
VERTICAL: 1:50

RELEASED FOR CONSTRUCTION
SIGNED BY K. ZUREK

DATE: 2008 03 20

ENGINEER'S SEAL
ORIGINAL SIGNED BY K.R. ZUREK
08/03/20

THE CITY OF WINNIPEG
WATER AND WASTE DEPARTMENT

2008 WATERMAIN RENEWALS
CONTRACT 1
SEVEN OAKS AVENUE
100 E OF MAIN STREET TO JONES STREET

SHEET 7 OF 16
CITY DRAWING NUMBER
D-11308