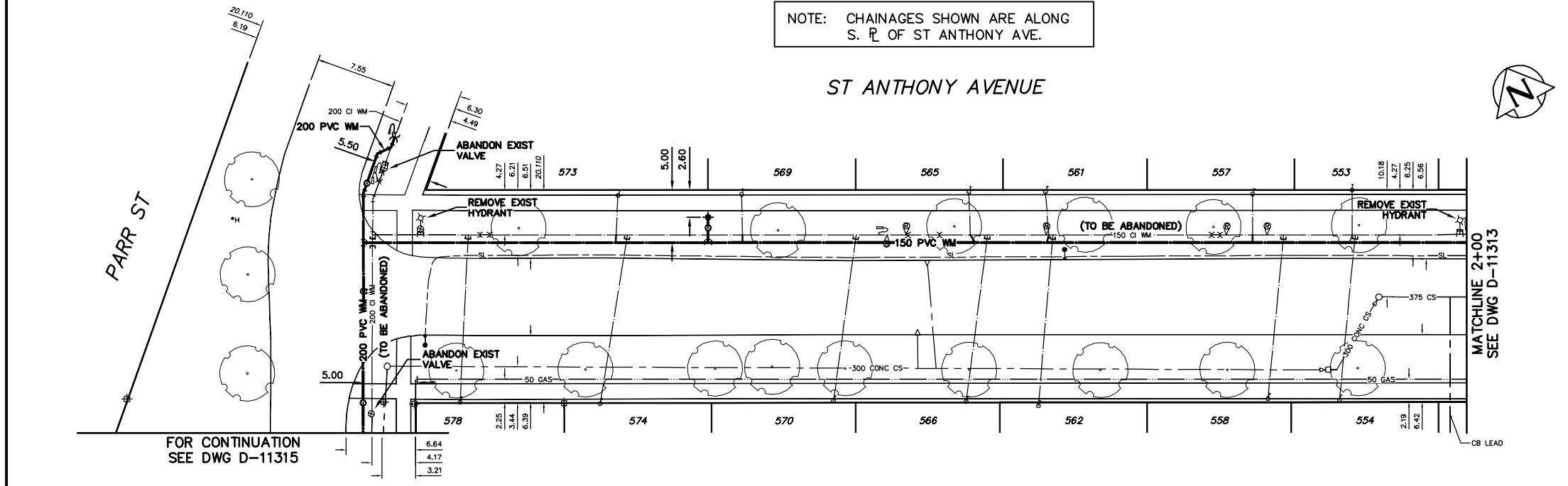


WATER SERVICE INFORMATION

ADDRESS	SIZE(mm) & TYPE (STREET)	SIZE(mm) & TYPE (PROP)	SHORT & LONG MEASUREMENT	CORP. LOCATION	REMARKS
553 ST ANTHONY ST	20	-	3.31 EWL HSE	OPP S/C	-
RESIDENTIAL	COPPER	-	88.17 EEL PARR	-	-
554 ST ANTHONY ST	20	-	2.89 EWL HSE	1.51 E OF S/C	-
RESIDENTIAL	COPPER	-	87.83 EEL PARR	-	-
557 ST ANTHONY ST	20	-	2.84 WEL HSE	0.04 E OF S/C	-
RESIDENTIAL	COPPER	-	78.59 EEL PARR	-	-
558 ST ANTHONY ST	20	-	0.41 WEL HSE	1.56 E OF S/C	-
RESIDENTIAL	COPPER	-	81.04 EEL PARR	-	-
561 ST ANTHONY ST	20	-	2.83 EWL HSE	0.3 E OF S/C	-
RESIDENTIAL	COPPER	-	58.83 EEL PARR	-	-
562 ST ANTHONY ST	20	-	2.18 WEL HSE	1.4 E OF S/C	-
RESIDENTIAL	COPPER	-	59.67 EEL PARR	-	-
565 ST ANTHONY ST	20	-	1.97 WEL HSE	0.2 E OF S/C	-
RESIDENTIAL	COPPER	-	51.68 EEL PARR	-	-
566 ST ANTHONY ST	20	-	1.13 WEL HSE	1.8 E OF S/C	-
RESIDENTIAL	COPPER	-	52.61 EEL PARR	-	-
569 ST ANTHONY ST	20	-	1.17 EWL HSE	0.12 E OF S/C	-
RESIDENTIAL	COPPER	-	30.08 EEL PARR	-	-
570 ST ANTHONY ST	20	-	OPP EL HSE	2.2 E OF S/C	-
RESIDENTIAL	COPPER	-	38.95 EEL PARR	-	-
573 ST ANTHONY ST	20	-	4.11 WEL HSE	2.2 W OF S/C	-
RESIDENTIAL	COPPER	-	18.28 EEL PARR	-	-
574 ST ANTHONY ST	20	-	1.33 EWL HSE	2.56 E OF S/C	-
RESIDENTIAL	COPPER	-	17.27 EEL PARR	-	-
578 ST ANTHONY ST	20	-	2.97 EWL HSE	0.75 E OF S/C	-
RESIDENTIAL	COPPER	-	4.22 EEL PARR	-	-

* SERVICES TO BE RENEWED TO R UPON CONFIRMATION BY THE CONTRACTOR OF EXISTING 1/2" COPPER OR LEAD SERVICE. OBTAIN APPROVAL FROM CONTRACT ADMINISTRATOR PRIOR TO RENEWAL.

NOTE: CHAINAGES SHOWN ARE ALONG S. P. OF ST ANTHONY AVE.



- CONSTRUCTION NOTES**
1. EXPOSE EXISTING WATERMAIN & CONFIRM INVERTS PRIOR TO CONSTRUCTION.
 2. CONFIRM LOCATION OF ALL SERVICES IN THE FIELD.
 3. INSTALL WATERMAIN BY TRENCHLESS METHODS.
 4. TRENCHES AND EXCAVATIONS WITHIN 1 METRE OF A PAVED AREA INCLUDING SIDEWALKS SHALL BE CLASS 3 BACKFILL.
 5. ALL MATERIALS SHALL CONFORM TO THE CITY OF WINNIPEG STANDARD CONSTRUCTION SPECIFICATIONS.
 6. MINIMUM COVER TO TOP OF WATERMAIN SHALL BE 2.4 m.
 7. REPLACE ALL EXISTING LEAD SERVICES FROM PROPOSED WATERMAIN TO R.
 8. NOTIFY ALL AFFECTED RESIDENTS AND BUSINESSES 24 HOURS IN ADVANCE OF ANY WATER SHUTDOWNS OR DISRUPTION OF SERVICE.
 9. EXCAVATIONS TO BE LOCATED AWAY FROM EXISTING TREE'S.

METRIC
WHOLE NUMBERS INDICATE MILLIMETRES
DECIMALIZED NUMBERS INDICATE METRES

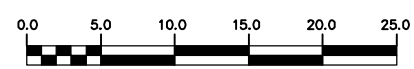
NOTE: ALL VALVES TO BE INSTALLED CLOCKWISE TO CLOSE

WARNING

IF POWER EQUIPMENT OR EXPLOSIVES ARE TO BE USED FOR EXCAVATION ON THIS PROJECT THE CONTRACTOR MUST:

- 1) NOTIFY THE GAS COMPANY OF THE PROPOSED LOCATION OF EXCAVATION.
- 2) TAKE PRECAUTION TO AVOID DAMAGE TO GAS COMPANY INSTALLATIONS.

SEE PROVINCIAL REGULATION 210/72 FOR DETAILS



200 WM	WATERMAIN	200 WM	SL, HYDRO	150 WM	WATERMAIN	150 WM
⊕	HYDRANT	⊕	MTS	⊕	HYDRANT	⊕
⊙	VALVE	⊙	TRAFFIC SIGNALS	⊙	VALVE	⊙
525 LDS	LAND DRAINAGE SEWER	525 LDS	GAS	300 LDS	LAND DRAINAGE SEWER	300 LDS
375 WWS	WASTEWATER SEWER	375 WWS	SURVEY BAR	250 WWS	WASTEWATER SEWER	250 WWS
○	MANHOLE	●	FENCE	⊕	PROFILE	⊕
□	CATCH BASIN	■	POLE - HYDRO, MTS	⊕	GROUND ABOVE PIPE	⊕
▽	CURB INLET	▽	CURB STOP	⊕	⊕ DITCH (NORTH & WEST)	⊕
◁	REDUCER	◁	GUY ANCHOR	⊕	⊕ DITCH (SOUTH & EAST)	⊕
X	COUPLER	X	LIGHT STANDARD	⊕	⊕ GUTTER (NORTH & WEST)	⊕
⊕	ANODE	⊕	TREE	⊕	⊕ GUTTER (SOUTH & EAST)	⊕
EXISTING	LEGEND-PLAN	PROPOSED	EXISTING	LEGEND-PLAN	PROPOSED	EXISTING
---	LEGEND-PROFILE	---	---	LEGEND-PROFILE	---	---

LOCATION APPROVED UNDERGROUND STRUCTURES

SUPV. U/G STRUCTURES COMMITTEE DATE

NOTE: LOCATION OF UNDERGROUND STRUCTURES AS SHOWN ARE BASED ON THE BEST INFORMATION AVAILABLE BUT NO GUARANTEE IS GIVEN THAT ALL EXISTING UTILITIES ARE SHOWN OR THAT THE GIVEN LOCATIONS ARE EXACT. CONFIRMATION OF EXISTENCE AND EXACT LOCATION OF ALL SERVICES MUST BE OBTAINED FROM THE INDIVIDUAL UTILITIES BEFORE PROCEEDING WITH CONSTRUCTION.

NO.	REVISIONS	DATE	BY

CITY OF WINNIPEG
WATER AND WASTE
ENGINEERING DIVISION

DESIGNED BY: DB
CHECKED BY: NC

DRAWN BY: CJH
APPROVED BY: KZ

HOR. SCALE: 1:250
VERTICAL: 1:50

RELEASED FOR CONSTRUCTION
SIGNED BY K. ZUREK

DATE: 2008 03 20 DATE: 08/03/20

ENGINEER'S SEAL

ORIGINAL SIGNED BY K.R. ZUREK 08/03/20

BID OPPORTUNITY: 225-2008
FILENAME: D-11314.dwg
PLOT DATE: 2008 03 20

THE CITY OF WINNIPEG
WATER AND WASTE DEPARTMENT

2008 WATERMAIN RENEWALS
CONTRACT 1
ST ANTHONY AVENUE
PARR STREET TO
100 E OF PARR STREET

SHEET 12 OF 16
CITY DRAWING NUMBER
D-11313