

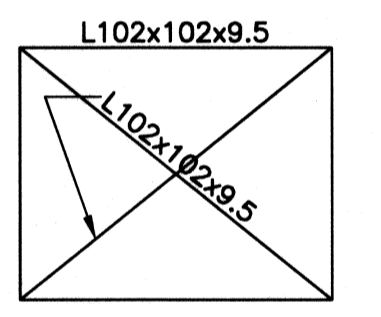
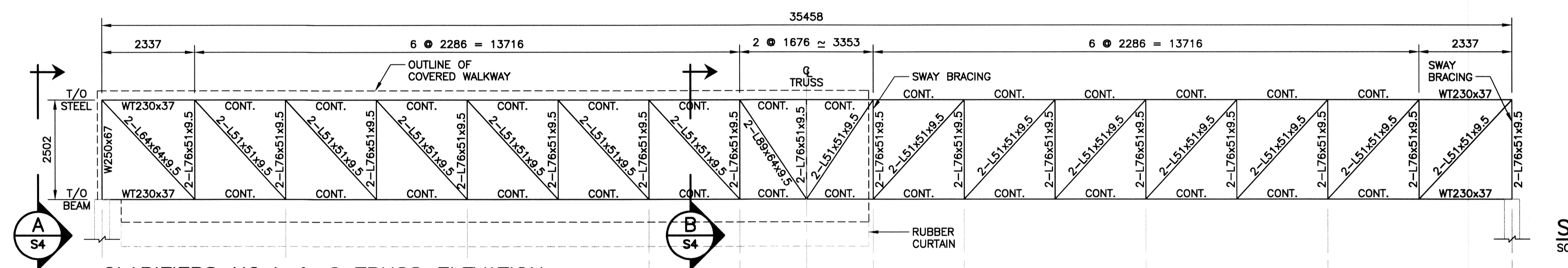
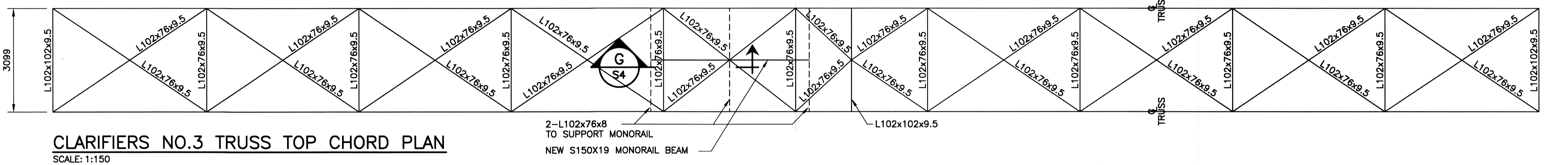
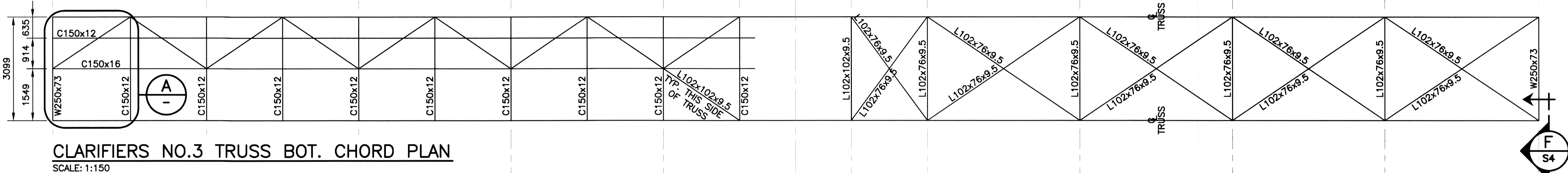
ESTIMATED WEIGHT OF CLARIFIER #3

TRUSS	17500 kgs
ENCLOSURE	10500 kgs
TOTAL (EST.)	28000 kgs

SWAY BRACING
SCALE: 1:75

TRUSS REFURBISHMENT SCOPE OF WORK:

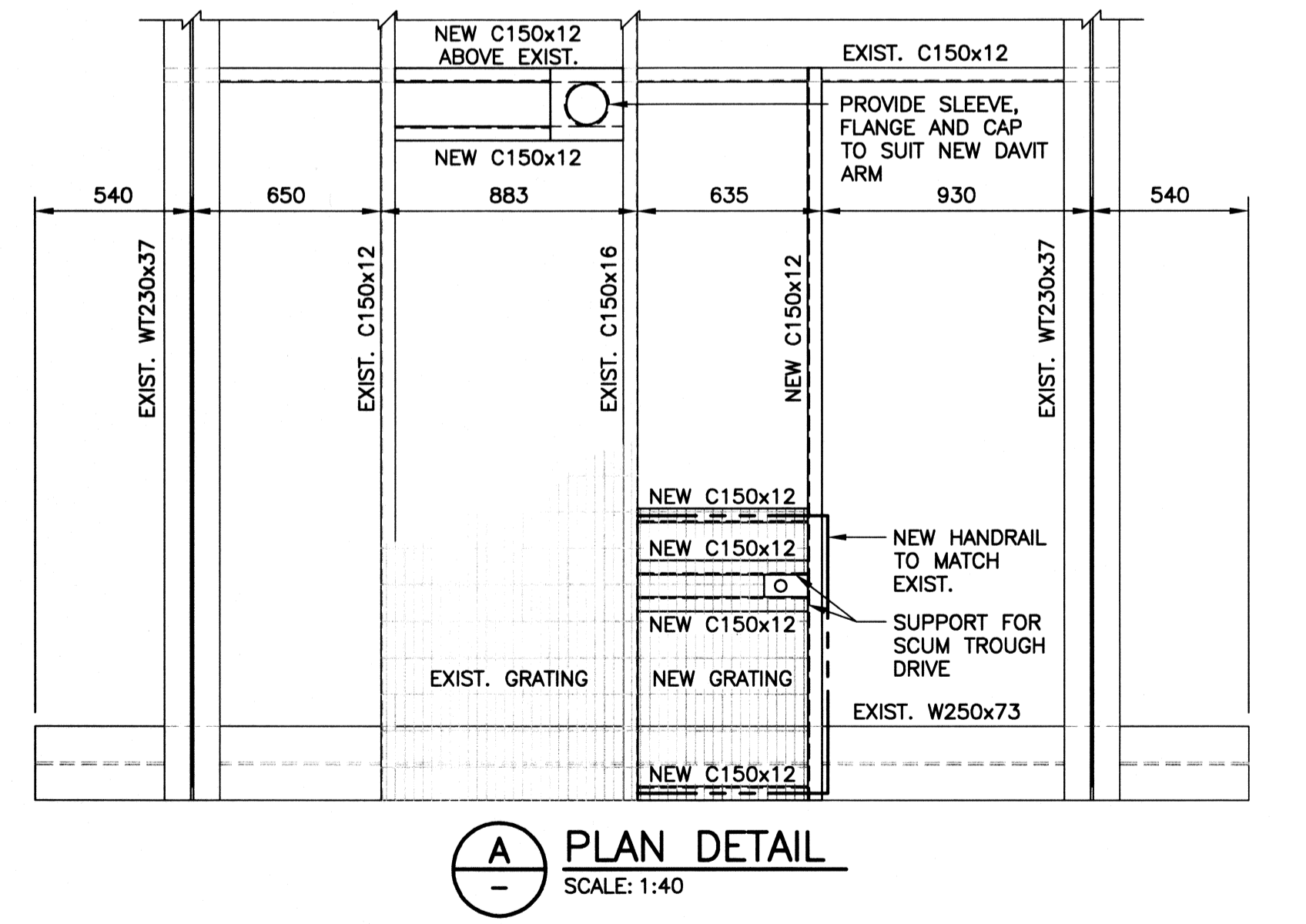
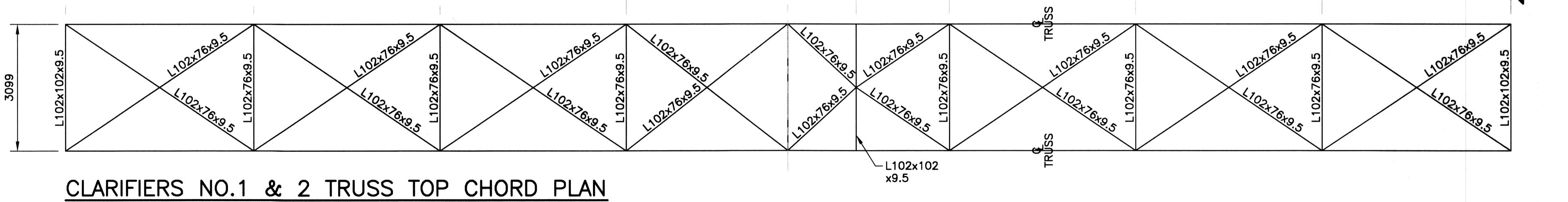
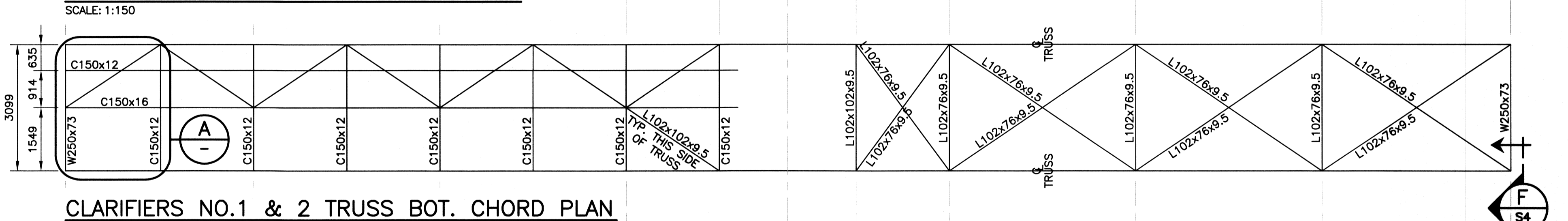
1. REMOVE AND DISPOSE OF ROOF MEMBRANE, INSULATION AND DECKING AND WALL CLADDING
2. REMOVE, SANDBLAST, GALVANIZE AND REINSTALL EXISTING WALKWAY GRATING AND HANDRAIL. PROVIDE TEMPORARY OPENING CLOSURE WHEN WALKWAY IS REMOVED.
3. PROVIDE NEW HANDRAIL AROUND CENTRE TURN TABLE
4. SANDBLAST AND PAINT ALL TRUSS FRAMING
5. INSTALL SUPPORT FRAMING FOR SCUM TROUGH AND GUIDE ARMS
6. SUPPLY AND INSTALL NEW BEARING PADS AT TRUSS SUPPORT POINTS
7. SUPPLY AND INSTALL NEW ROOF AND WALL SYSTEM FOR TRUSS ENCLOSURE
8. REMOVE AND REINSTALL HAND PUMP FOR SLUDGE LEVELING SYSTEM
9. SUPPLY AND INSTALL FRAMING FOR SCUM TROUGH DRIVE AND DAVIT ARM SUPPORT



ESTIMATED WEIGHT OF CLARIFIER #1 AND #2

TRUSS	14000 kgs
ENCLOSURE	8500 kgs
TOTAL (EST.)	22500 kgs

SWAY BRACING
SCALE: 1:75



COWLEGGEND



B.M. ELEV.		
DESIGNED BY	RJL	
DRAWN BY	MB	
HR. SCALE:	AS SHOWN	
VERTICAL:	-	
ISSUED FOR TENDER	13/02/08	RJL
NO. REVISIONS	DATE	BY

KGS GROUP
CONSULTING ENGINEERS & PROJECT MANAGERS

DESIGNED BY: RJL | CHECKED BY: RJL
DRAWN BY: MB | APPROVED BY:
HR. SCALE: AS SHOWN | VERTICAL: -
ISSUED FOR TENDER: 13/02/08 | RJL

ENGINEER'S SEAL
R.J. LONG
PROFESSIONAL ENGINEER
CONSULTANT DRAWING NO. 1-0101P-C0005-001

THE CITY OF WINNIPEG
WATER AND WASTE DEPARTMENT

Winnipeg
PROJECT TITLE: NORTH END WATER POLLUTION CONTROL CENTRE PRIMARY CLARIFIERS 1 & 2 WALKWAY FRAMING & ENCLOSURE
SHEET 01 OF 01
KGS JOB NUMBER: 06-0107-03 S3
CITY DRAWING NUMBER: 1-0101P-C0005-001