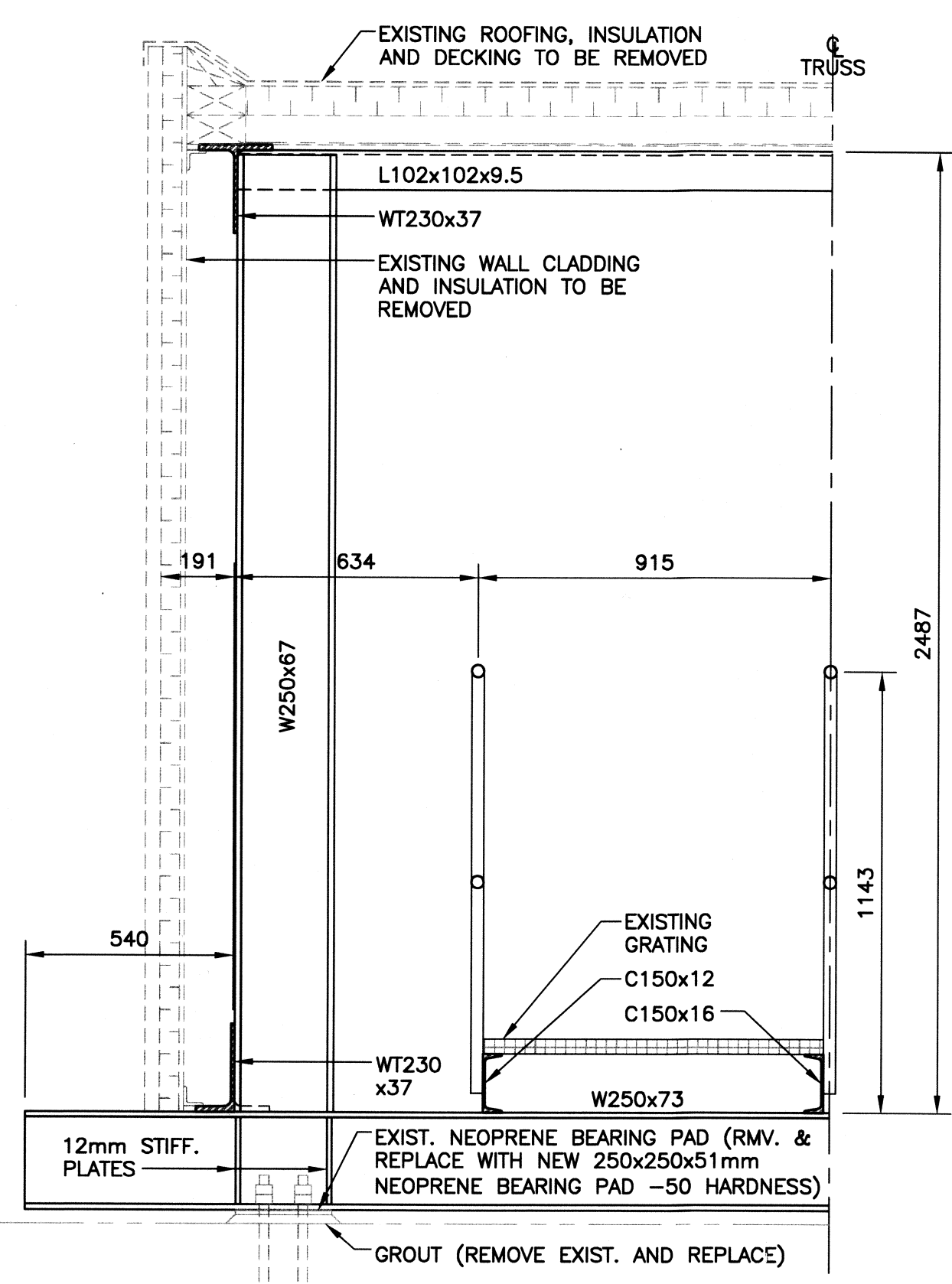


INSULATED METAL WALL CLADDING SYSTEMS

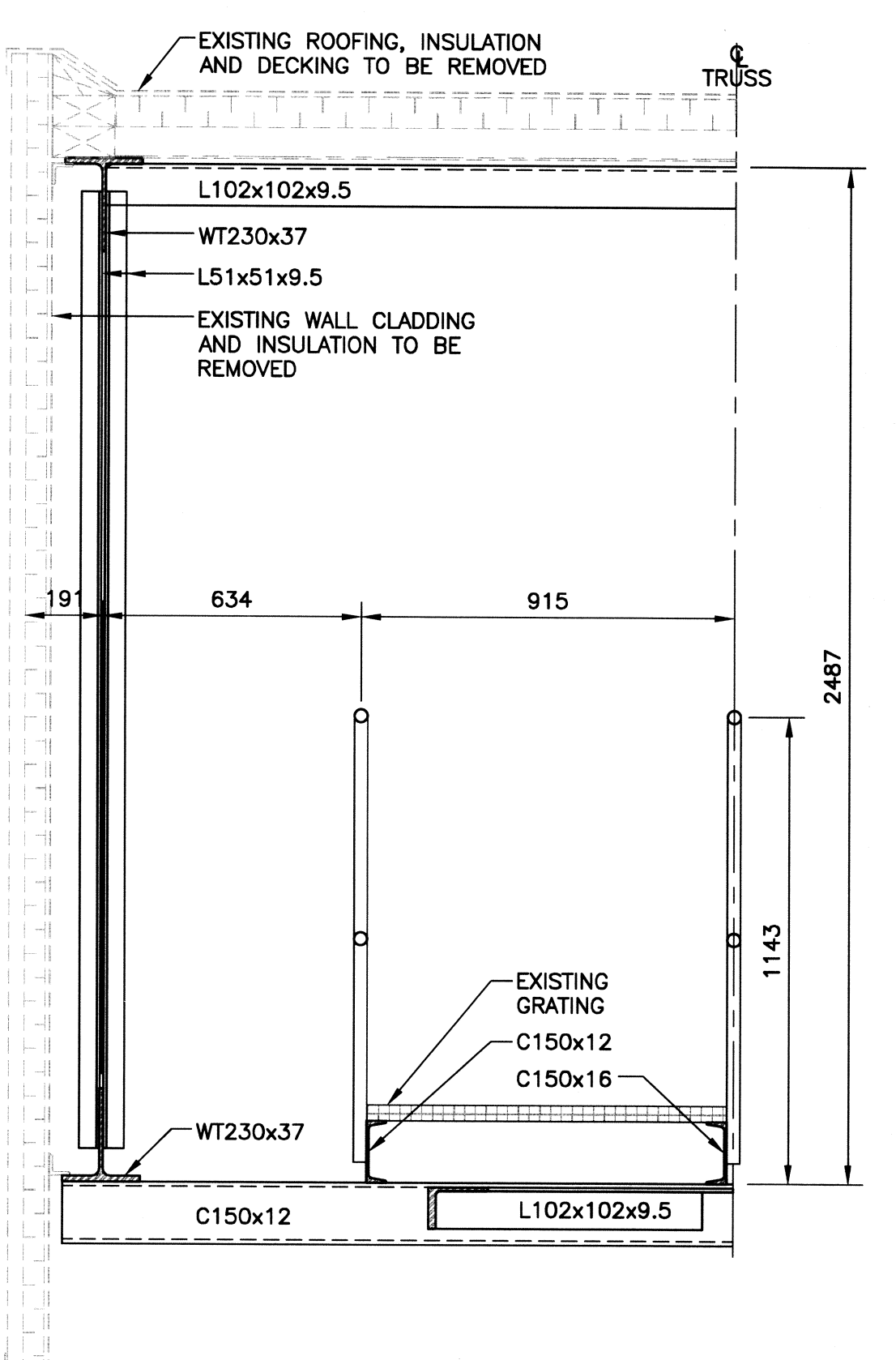
1. ALL INSULATED METAL WALL CLADDING SHALL BE DESIGNED, DETAILED, FABRICATED AND INSTALLED AS A COMPLETE SYSTEM AND SHALL BE THE RESPONSIBILITY OF A SINGLE CONTRACTOR. ALL COMPONENTS SHALL BE DESIGNED TO SUSTAIN ALL STRUCTURAL LOADING (INCLUDING SNOW, WIND, THERMAL, EQUIPMENT, ETC.) AS NOTED AND AS REQUIRED BY THE NATIONAL BUILDING CODE OF CANADA 2005 AND OTHER TRADES.
2. THE WALL SYSTEM SHALL BE AN INSULATED SYSTEM PROVIDING A WEATHERTIGHT EXTERIOR SKIN PREVENTING THE INFILTRATION OF RAIN AND SNOW, AND AN AIR TIGHT INTERIOR SKIN PREVENTING THE EXFILTRATION OF INTERIOR AIR INTO AND THROUGH THE TOTAL ASSEMBLY. THE EXTERIOR SKIN SHALL PROVIDE FOR DRAINAGE OF ANY TRAPPED MOISTURE TO THE EXTERIOR.
3. WALL SYSTEM SUPPLIER SHALL SUBMIT SHOP DRAWINGS BEARING THE SEAL OF A PROFESSIONAL ENGINEER REGISTERED IN THE PROVINCE OF MANITOBA TO THE DESIGN ENGINEER FOR APPROVAL PRIOR TO FABRICATION OF ANY COMPONENTS. SHOP DRAWINGS SHALL SHOW AND LIST ALL MATERIALS, COMPONENTS, INTERFACES, ASSEMBLIES, CONNECTIONS, EXPANSION JOINTS, FLASHINGS, FASTENERS, CLOSURES, SEALANTS, SIZES, SHAPES, LENGTHS, SPACINGS, ETC.

ROOFING

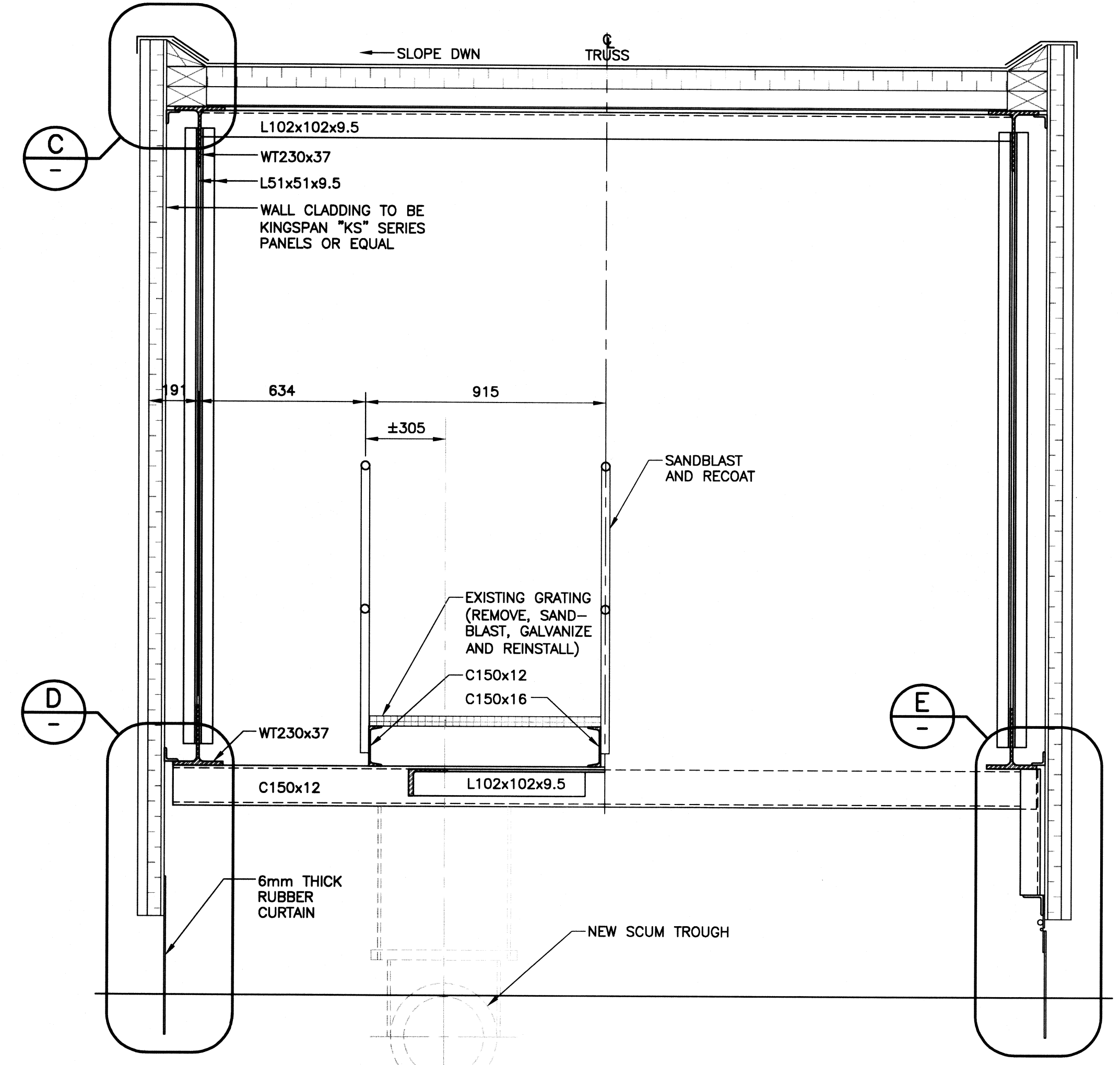
1. ROOFING SYSTEM SHALL CONSIST OF 10 MIL POLYETHYLENE VAPOUR/AIR BARRIER, 127mm UNFACED RIGID FIBERGLASS INSULATION IN 2 EQUAL LAYERS, 25mm TORCHABLE RIGID INSULATION, 2 PLY TORCH-ON SBS MODIFIED BITUMEN MEMBRANE.
2. VAPOUR/AIR BARRIER TO BE LOOSE LAID OVER STEEL ROOF DECK. LAP AND SEAL AS NOTED WITH ALL ADJACENT WALL VAPOUR/AIR BARRIERS.
3. RIGID INSULATION TO BE NC ROOF INSULATION BY FIBERGLAS CANADA INC., PANELS TO BE 915 X 1220. LOOSE LAY, TORCHABLE INSULATION TO BE "TORCH SAFE" BY FIBERGLAS CANADA INC., PANELS TO BE 915 X 1220. MECHANICALLY FASTEN "TORCH SAFE" INSULATION THRU UNFACED INSULATION AND V.B. TO STEEL DECK. FASTENERS TO BE CORROSION RESISTANT C/W METAL PLATES, 6 PER INSULATION PANEL. ALL INSULATION TO BE TIGHT FITTING, WITH ALL JOINTS STAGGERED BETWEEN SUBSEQUENT LAYERS.
4. ROOF MEMBRANE TO BE 2 PLY TORCH APPLIED SBS MODIFIED BITUMEN MEMBRANE. ALL COMPONENTS OF THE ROOF MEMBRANE SYSTEM TO BE THE PRODUCTS OF A SINGLE MANUFACTURER. ACCEPTABLE MANUFACTURER: SOPREMA OR APPROVED EQUAL.
5. BASE SHEET TO BE "SOPRALENE FLAM 180", A NON-WOVEN POLYESTER REINFORCEMENT AND SBS MODIFIED BITUMEN. COLOURED GRANULES (GREY) ON TOP FACE AND THERMOFUSIBLE PLASTIC FILM ON BOTTOM FACE. BASE SHEET TO BE TORCH APPLIED TO TORCHABLE ROOF INSULATION.
6. CAP SHEET TO BE "SOPRALENE FLAM 250 GR", A NON-WOVED POLYESTER REINFORCEMENT AND SBS MODIFIED BITUMEN. COLOURED GRANULES (GREY) ON TOP FACE AND THERMOFUSIBLE PLASTIC FILM ON BOTTOM FACE. CAP SHEET TO BE TORCH APPLIED TO BASE SHEET.
7. ROOF CURB STRIP FLASHING TO BE 2 PLY TORCH APPLIED SBS MODIFIED BITUMEN MEMBRANE. PRIME WOOD CURBS WITH "ELASTOCOL 500". TORCH APPLY STRIP FLASHING BASE LAYER OF "SOPRALENE FLAM 180" TO PRIMED WOOD. TORCH APPLY STRIP FLASHING CAP LAYER OF "SOPRALENE FLAM 250 GR", COLOUR GREY, TO BASE LAYER.
8. ALL ROOF MEMBRANE COMPONENTS TO BE SHIPPED, STORED, HANDLED AND INSTALLED IN STRICT CONFORMANCE WITH MANUFACTURER'S WRITTEN INSTRUCTIONS.
9. ALL ROOFING TO BE DONE IN ACCORDANCE WITH REQUIREMENTS OF THE "CANADIAN ROOFING CONTRACTOR'S ASSOCIATION" (C.R.C.A.) AND PRODUCT MANUFACTURER'S.



EXISTING TRUSS END SECTION
SCALE: 1:30

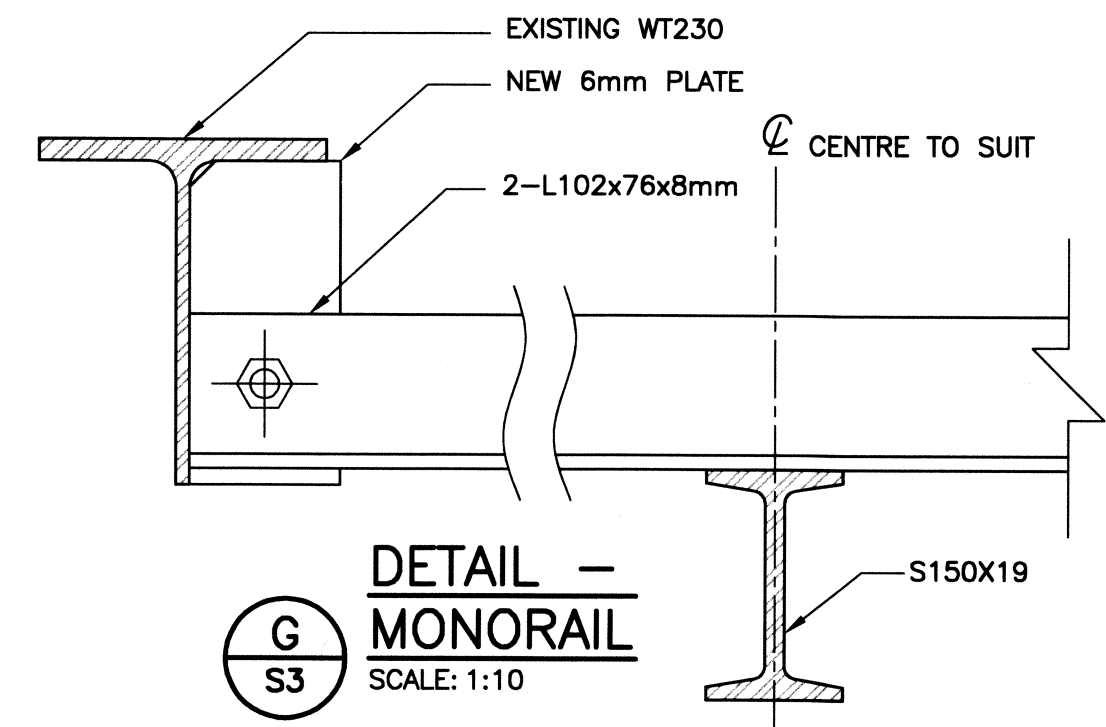


EXISTING TRUSS SECTION
SCALE: 1:30

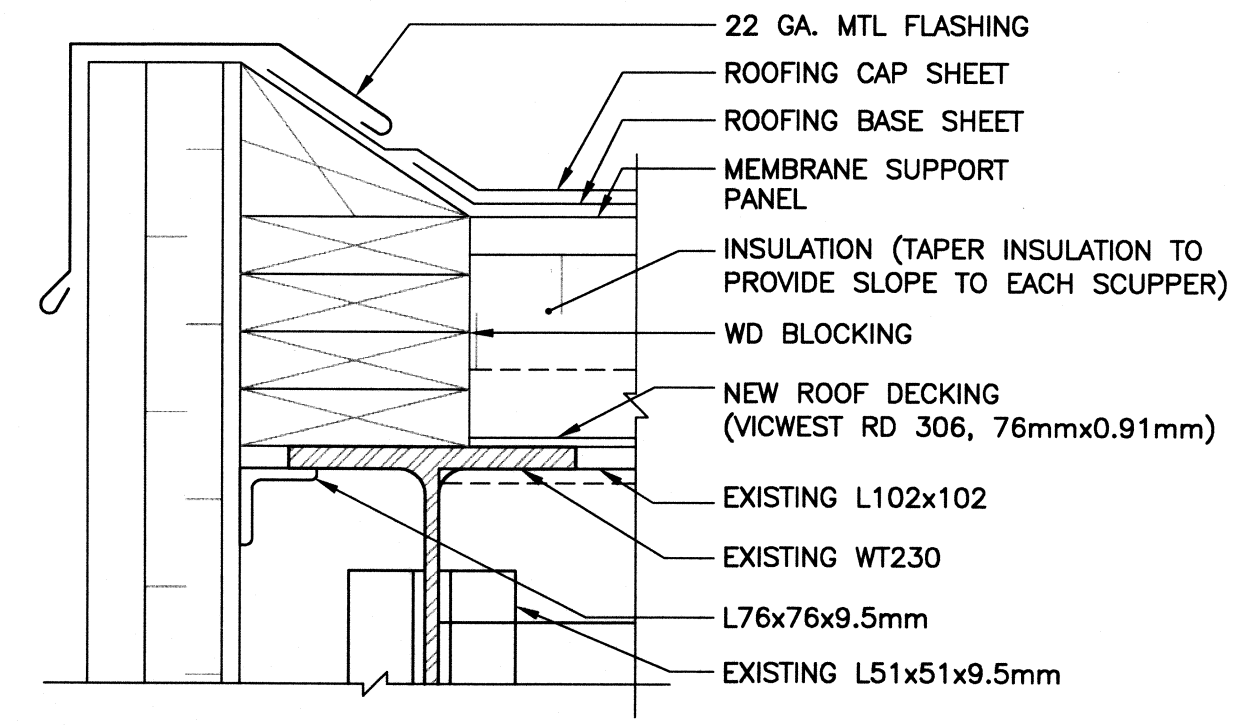


NEW TRUSS SECTION
SCALE: 1:30

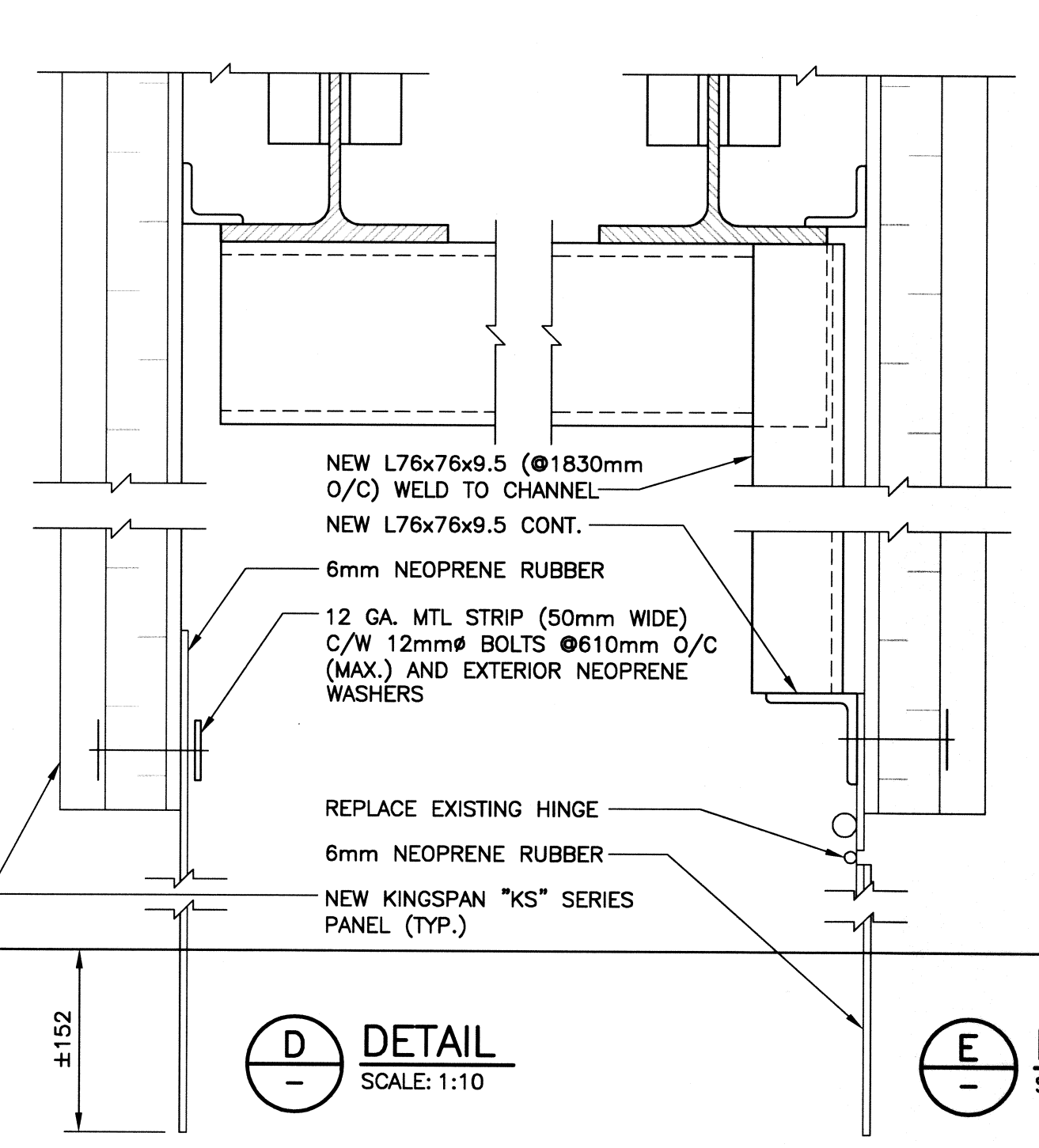
NOTE: SUPPORT FRAMING FOR SCUM TROUGH AND GUIDE ARM IS SUPPLIED BY EMICO. IF SUPPORT FRAMING DOES NOT ALIGN WITH EXISTING C150 CHANNELS EMICO SHALL PROVIDE ADDITIONAL CHANNELS AS REQUIRED.



DETAIL - MONORAIL
SCALE: 1:10

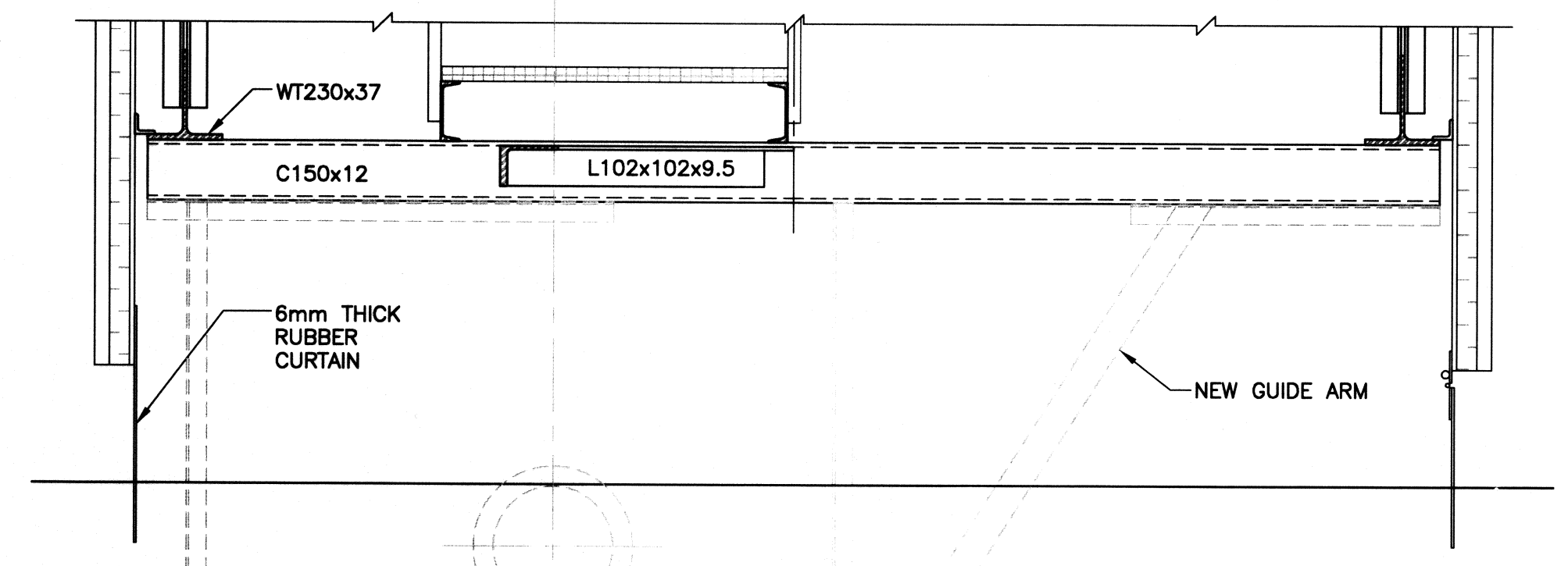


DETAIL - PARAPET
SCALE: 1:10

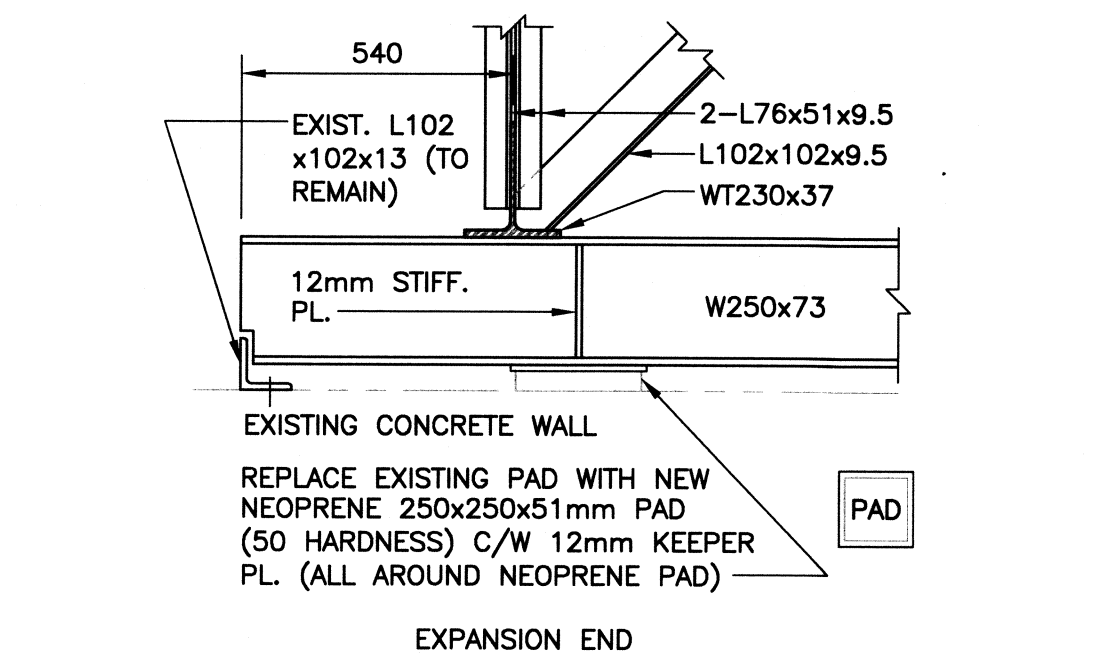


DETAIL
SCALE: 1:10

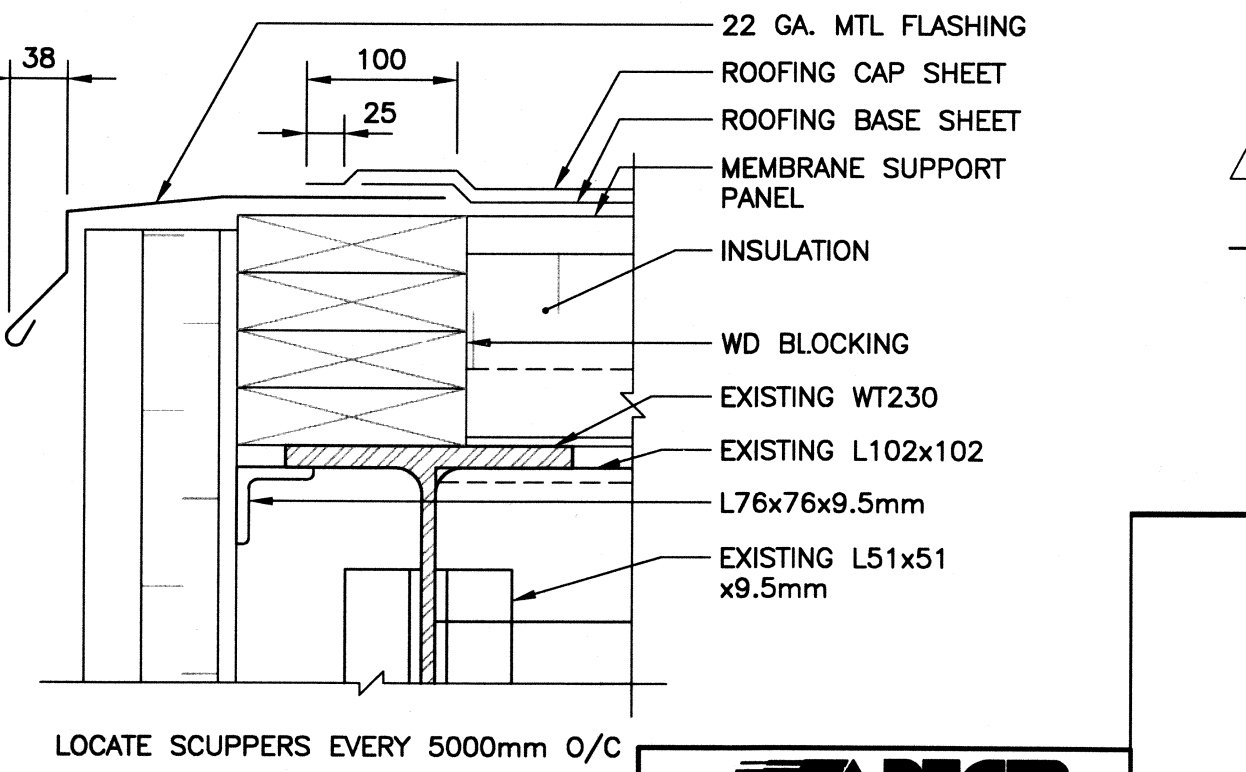
DETAIL
SCALE: 1:10



NEW TRUSS PARTIAL SECTION
SCALE: 1:30



EXISTING TRUSS END SECTION
SCALE: 1:30



DETAIL - SCUPPER
SCALE: 1:10

LOCATE SCUPPERS EVERY 5000mm O/C

APEGM
Certificate of Authorization
KGS Group
No. 245 Date: 13/02/08

B.M. ELEV.	
DESIGNED BY	RJL
DRAWN BY	MB
HOR. SCALE:	AS SHOWN
VERTICAL:	
ISSUED FOR TENDER	13/02/08 RJL
NO. REVISIONS	DATE BY
	-/01/08

KGS GROUP
CONSULTING ENGINEERS & PROJECT MANAGERS

CH2MHILL

ENGINEER'S SEAL
R.J. LONG
REGISTERED PROFESSIONAL ENGINEER

THE CITY OF WINNIPEG
WATER AND WASTE DEPARTMENT

Winnipeg

PROJECT TITLE
NORTH END WATER POLLUTION CONTROL CENTRE PRIMARY CLARIFIERS 1 & 2 WALKWAY FRAMING & ENCLOSURE

CONSULTANT DRAWING NO.
1-0101P-C0005-002

SHEET	OF
01	01
KGS JOB NUMBER	06-0107-03 S4
CITY DRAWING NUMBER	1-0101P-C0005-002

COWLEND