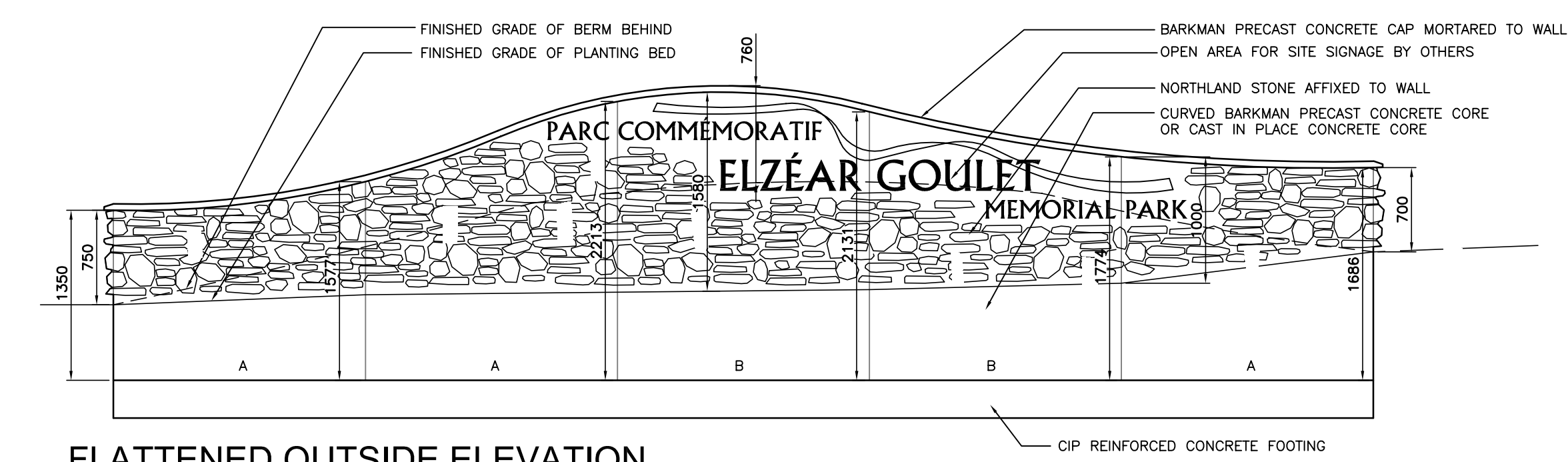
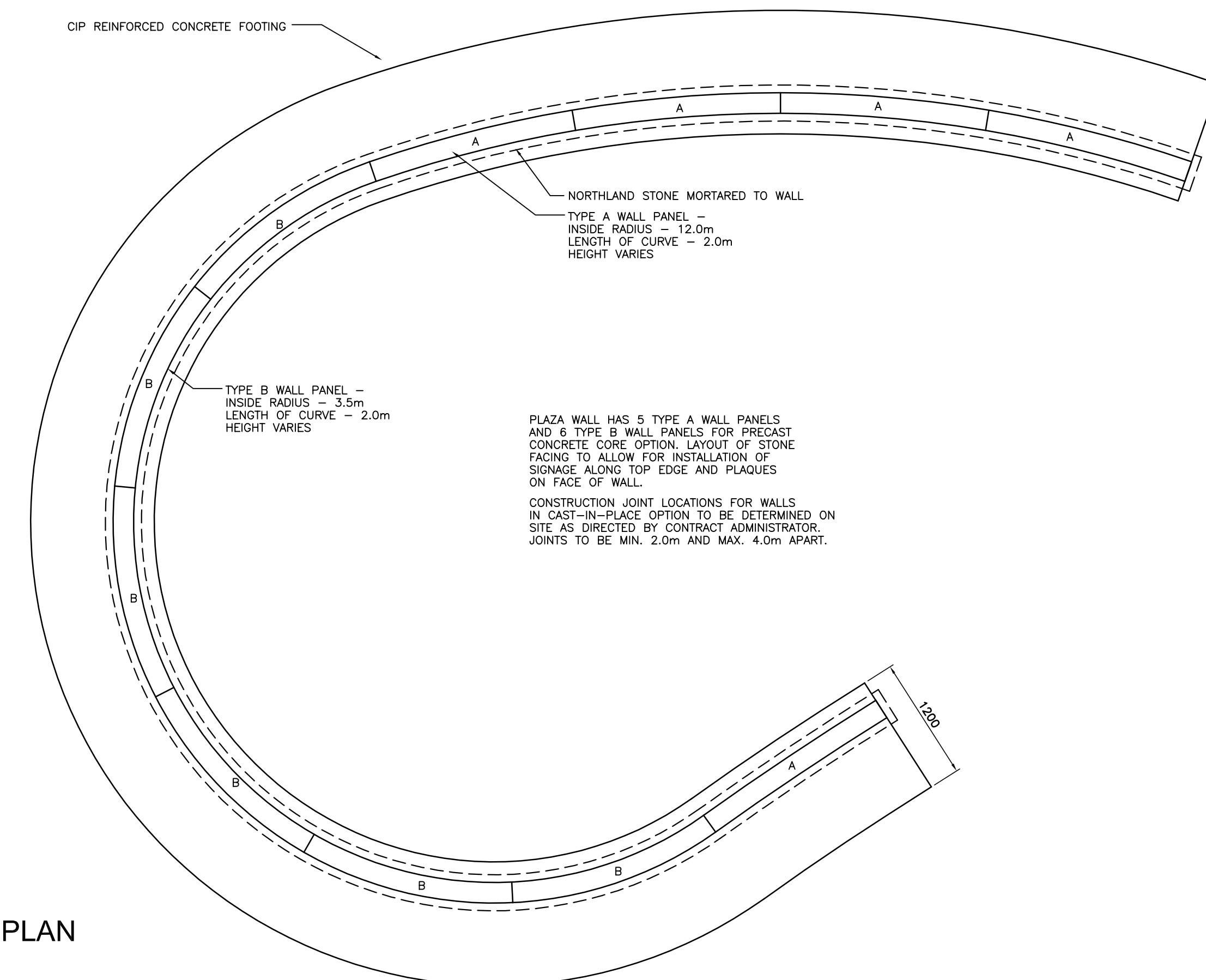


FLATTENED INSIDE ELEVATION OF PLAZA WALL



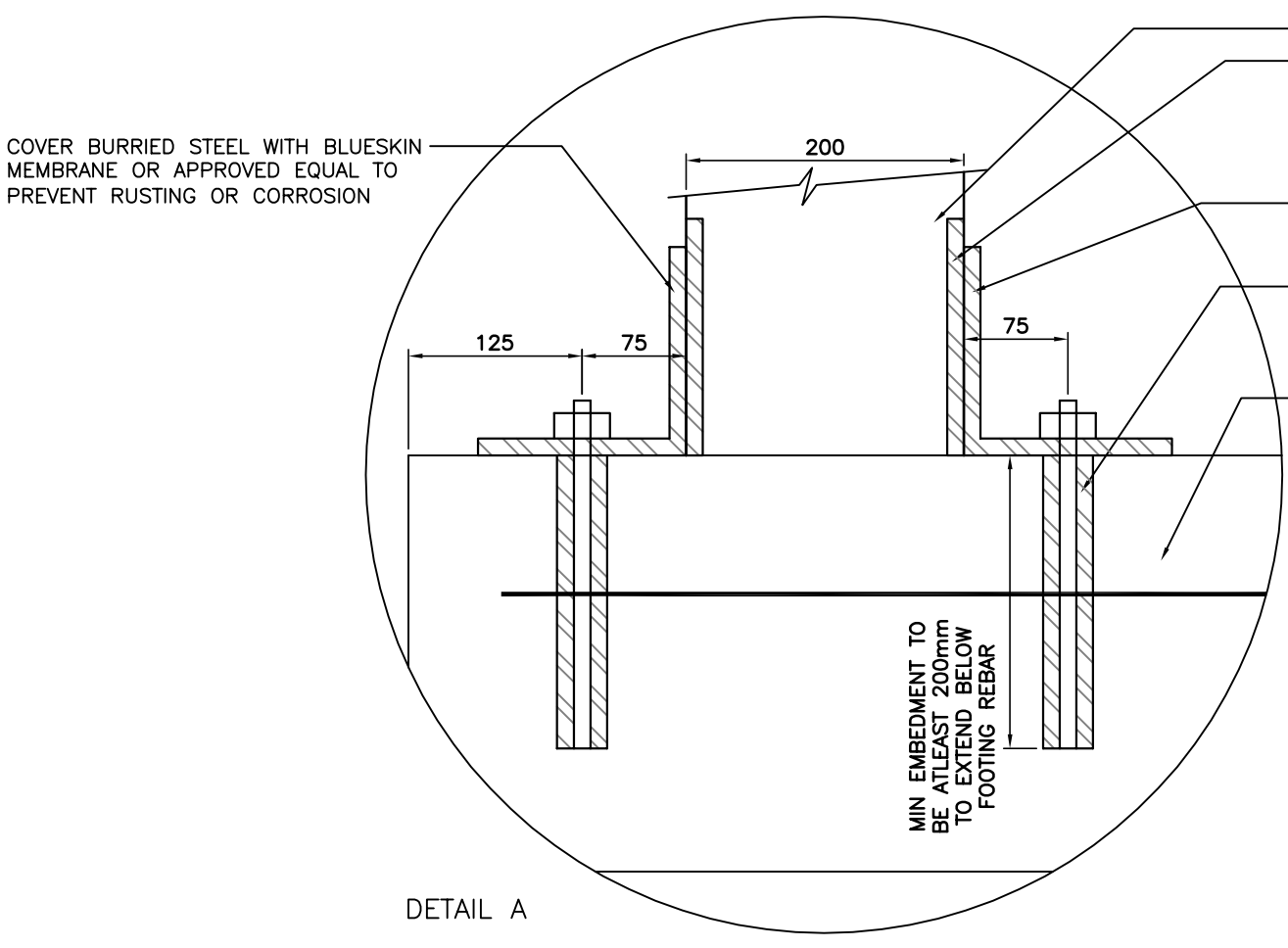
FLATTENED OUTSIDE ELEVATION



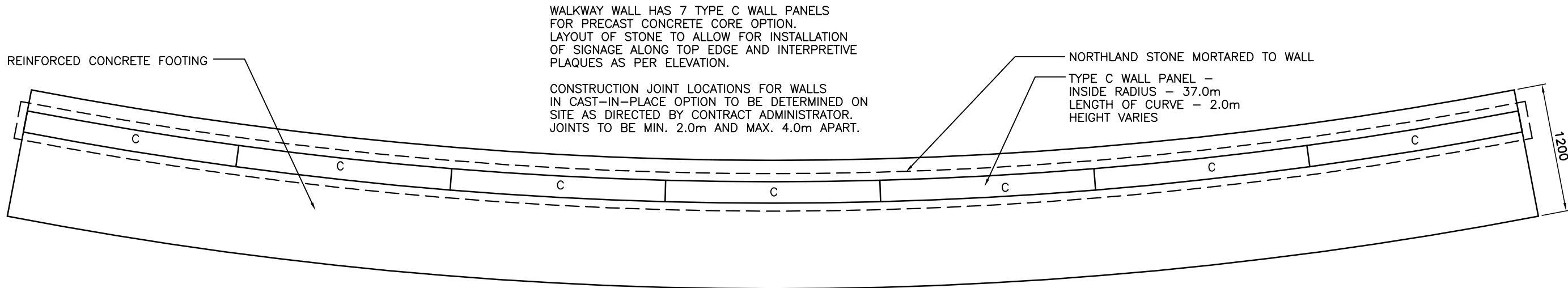
PLAN

11 PLAZA INTERPRETIVE WALL

L1 N.T.S.



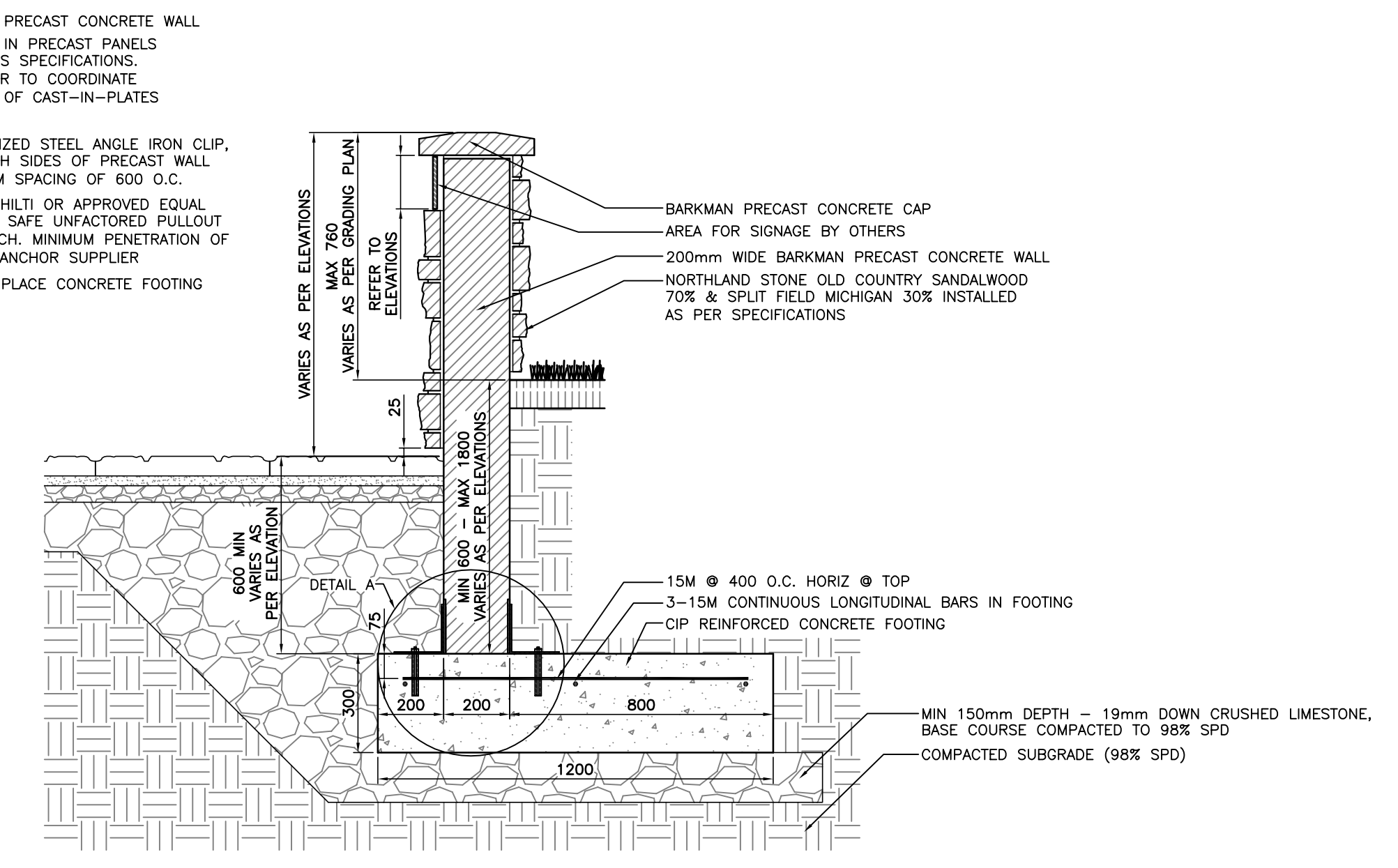
DETAIL A



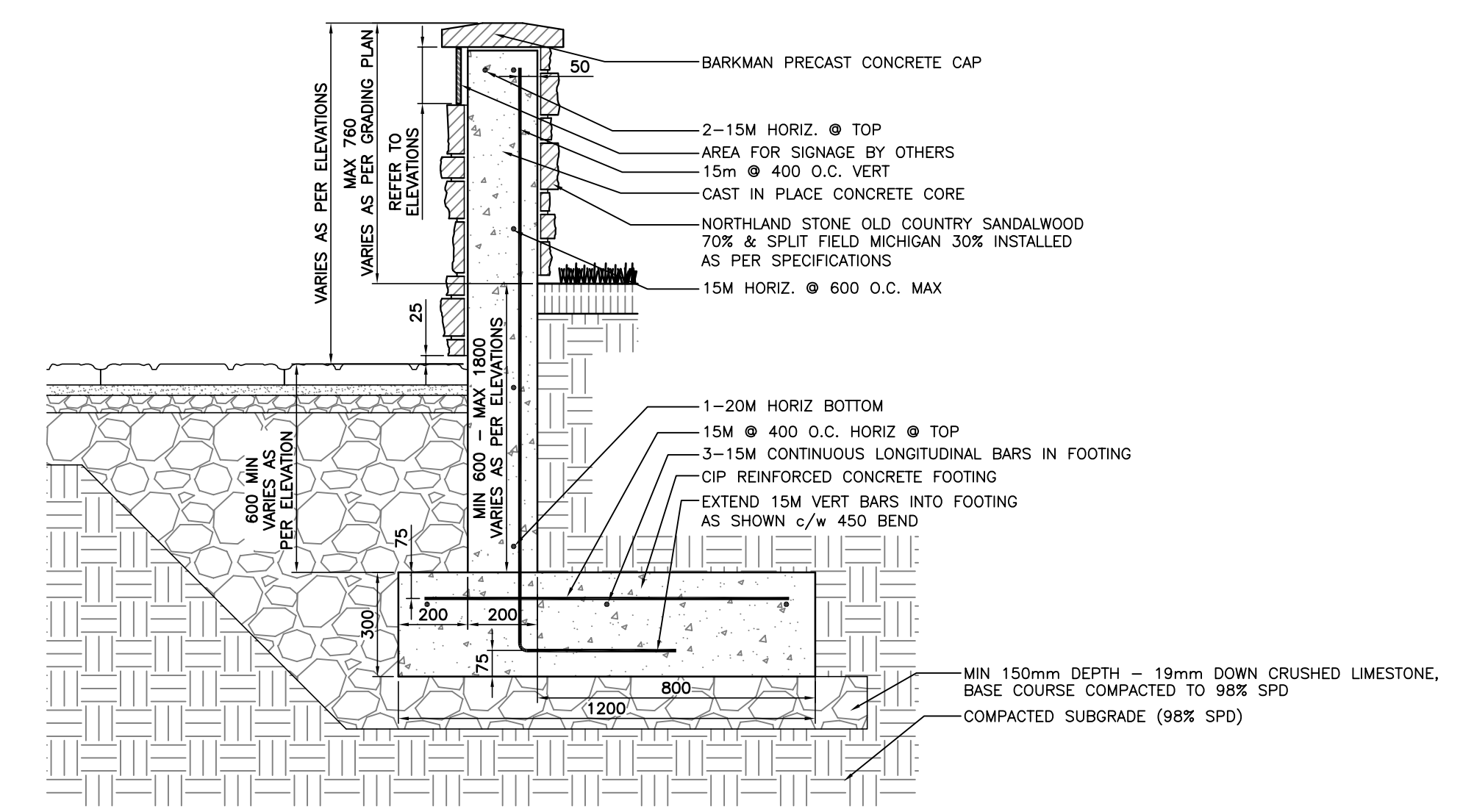
PLAN

13 WALKWAY INTERPRETIVE WALL

L1 N.T.S.



OPTION 2 - PRECAST CONCRETE CORE

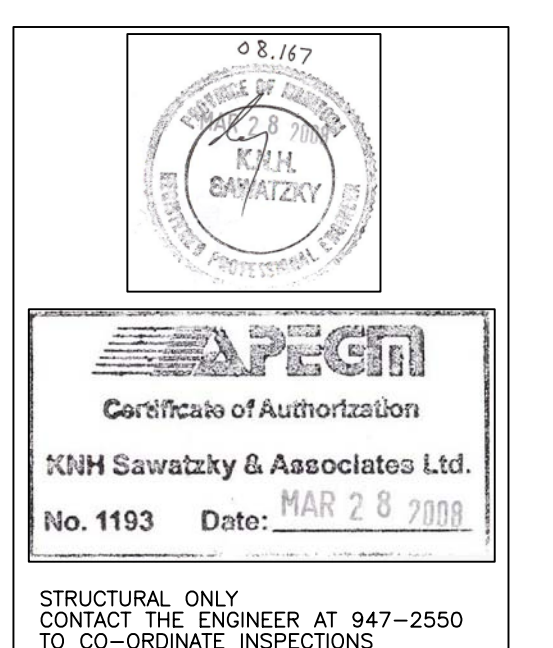


OPTION 1 - CAST-IN-PLACE CONCRETE CORE

14 CONCRETE CORE

L1 N.T.S.

NOTE: ALL REBAR GRADE 400 STEEL.  
CAST-IN-PLACE CONCRETE TO BE MIN 30MPa  
Ø28 DAYS, 4%-7% ENTRAINED AIR, MAX 90mm  
SLUMP, TYPE 50 SULPHATE RESISTANT CONCRETE



ISSUED FOR TENDER	04/04/08 AH
ISSUED FOR PERMITS	04/01/08 AH

Date:	Scale:	
14-03-08	AS NOTED	
Designed By:	Drawn By:	Checked By:
JW	JW	SR



CITY OF WINNIPEG  
Project Title:  
**ELZÉAR GOULET  
MEMORIAL PARK**

Sheet Title:  
**DETAILS**

Project No.:  
07-050

Drawing No.:  
**L3.2**