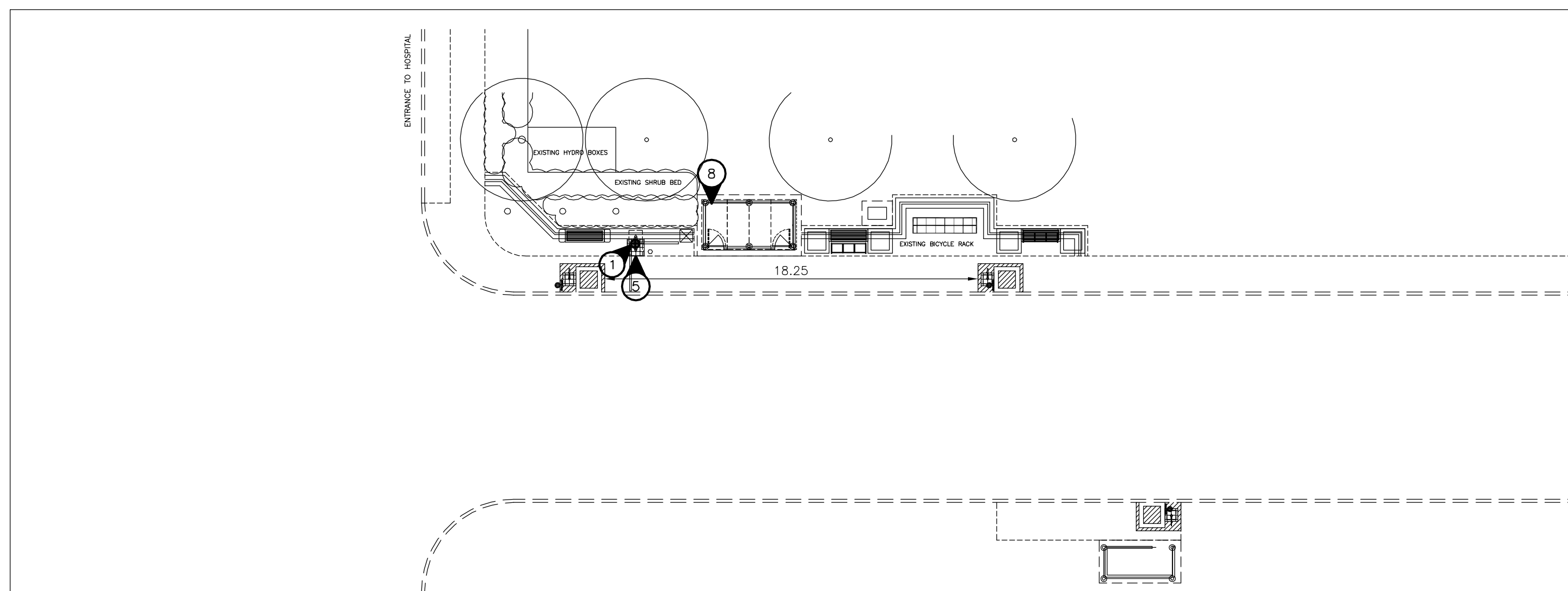
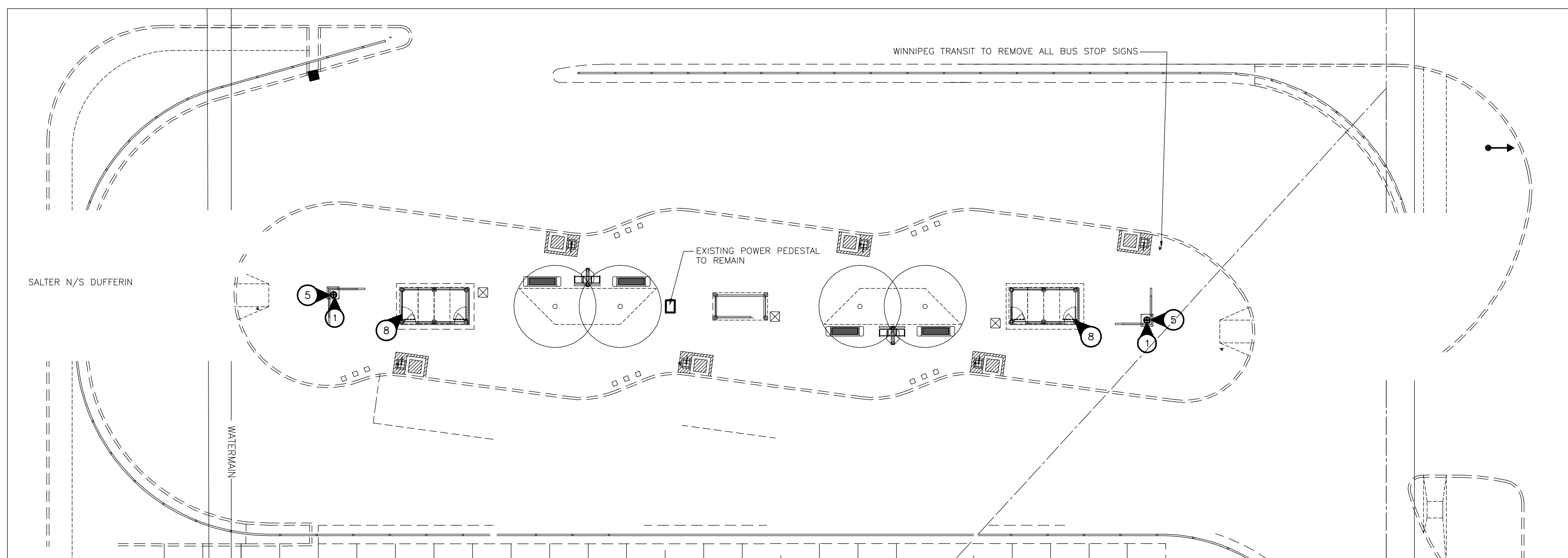


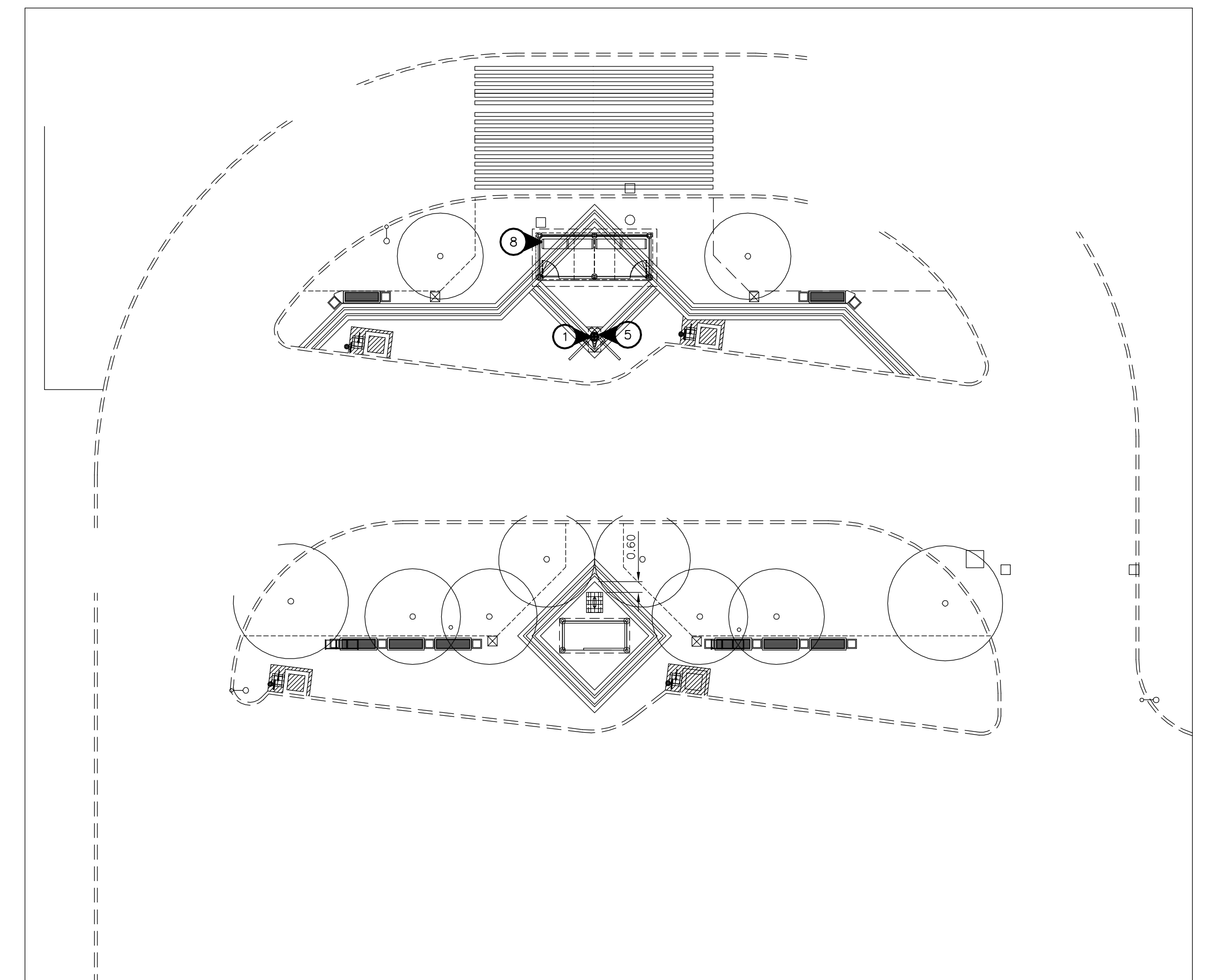
Unicity Mall Terminal  
Stops #20245, 20304, 20305, 20309, 20605



Grace Hospital  
Stops #20469, 20293, 20298



Garden City Centre  
Stops #30779, 30780, 30377, 30364, 30890, & 30379



Red River College Terminal  
Stops #20320, 20432, 20435, 20456

**SPECIFIC ELECTRICAL NOTES**

- 1 WIRE & CONNECT ILLUMINATED TRANSIT SIGN AS REQUIRED. COORDINATE EXACT LOCATION AND REQUIREMENTS WITH SIGNAGE SUPPLIER.
- 2 NOT USED.
- 3 NOT USED.
- 4 NOT USED.
- 5 DISCONNECT EXISTING ILLUMINATED SIGN AND PROTECT WIRES FOR REINSTALLATION. CONNECT NEW SIGN FOLLOWING INSTALLATION.
- 6 NOT USED.
- 7 NOT USED.
- 8 DISCONNECT EXISTING HEATED SHELTER AND PROTECT WIRES FOR REINSTALLATION. EXISTING WIRING AND C.B.'S MAY BE REUSED IF IN GOOD CONDITION AND SIZED CORRECTLY FOR NEW LOADS. CONNECT NEW SHELTER FOLLOWING INSTALLATION.
- 9 DISCONNECT EXISTING SIGN. TERMINATE WIRING IN AN APPROVED MANNER.

**GENERAL ELECTRICAL NOTES**

- 1. INSTALL JUNCTION BOX IN SHELTER TO PROVIDE POWER FOR LIGHTING AND HEATING CIRCUITS.
- 2. LABEL ELECTRICAL CIRCUIT AND DEVICES WITH LAMACOID PLATES.
- 3. LOCATE ALL EXISTING U/G SERVICES PRIOR TO TRENCHING.
- 4. MINIMUM WIRE SIZE #12.
- 5. CONFIRM ALL POWER CONNECTION POINTS WITH ASSOCIATED UTILITY/THE CITY.

No.	Revisions	Date	By
04-08-08	1:200		
Designed By	Drawn By	Checked By	
DZ/SL	SL	VJT	



WINNIPEG TRANSIT  
Project Title  
**BUS STOP UPGRADE PROGRAM PHASE 3 ELECTRICAL WORKS**

Sheet Title  
**TERMINAL LAYOUT PLANS**

Project No. 28-090 Drawing No. E-4

**NOVA 3 ENGINEERING LTD.**  
CONSULTING ENGINEERS

201-120 FORT STREET TEL.: (204) 943-6142  
WINNIPEG, MANITOBA FAX.: (204) 942-1276  
R3C 1C7 JN.: 28-090

THIS DRAWING IS THE EXCLUSIVE PROPERTY OF NOVA 3 ENGINEERING LTD. AND MAY ONLY BE REPRODUCED WITH THE WRITTEN PERMISSION OF NOVA 3 ENGINEERING LTD. THE CONCEPT AND DESIGN INCORPORATED INTO THIS DRAWING ARE BASED ON INFORMATION PROVIDED BY THE CLIENT AND OTHER RELATED SOURCES. PROFESSIONAL ENGINEER ACCEPTS NO RESPONSIBILITY FOR DRAWING AND DESIGN UNLESS DRAWING IS ACCOMPANIED BY ORIGINAL SEALED AND SIGNED LETTER OF INTENT AND CERTIFICATE OF INSPECTION. REFER TO WWW.NOVA3.CA FOR CAUTIONARY NOTES.