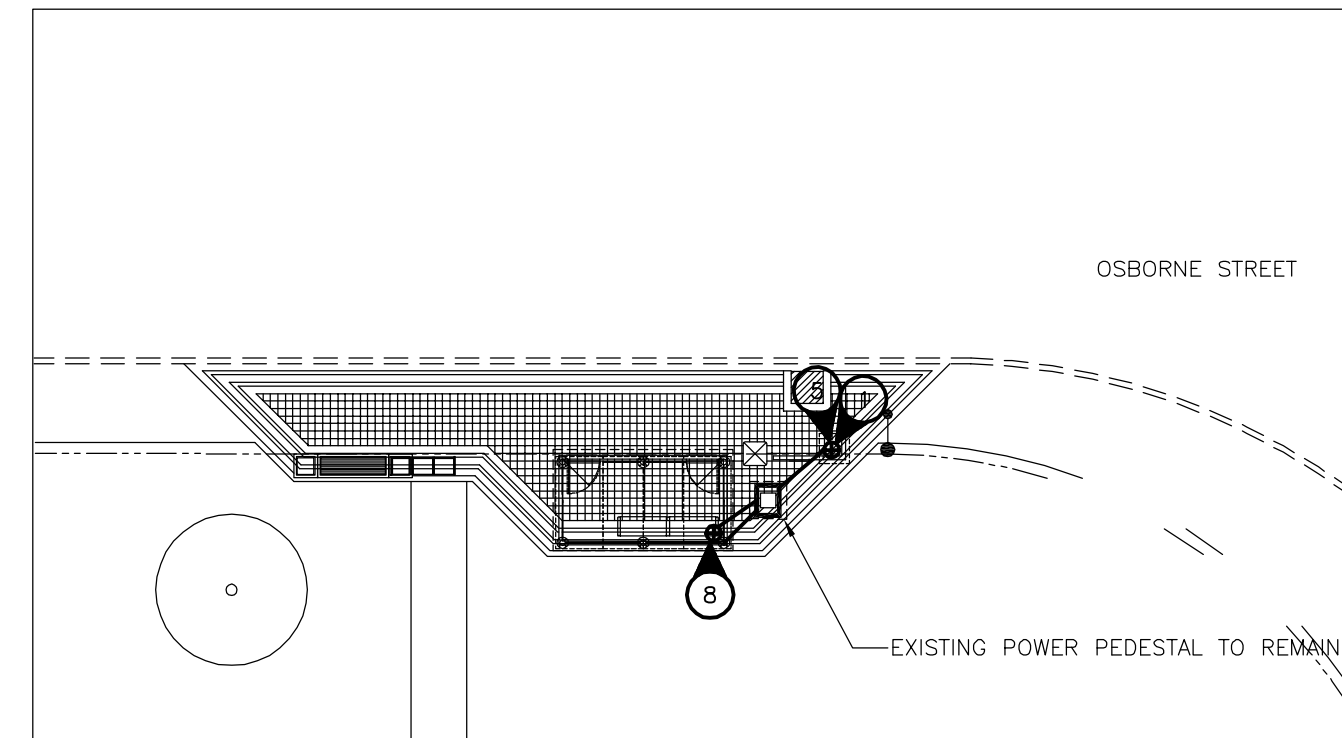
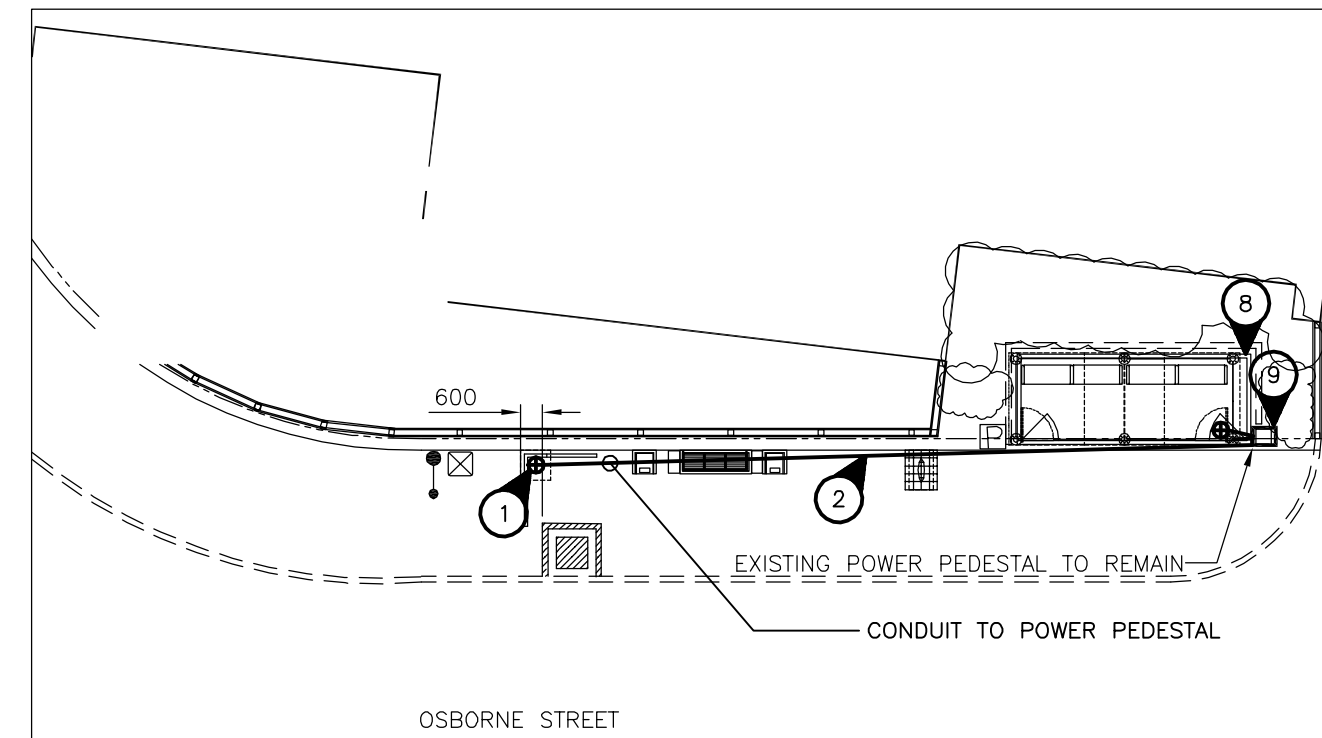


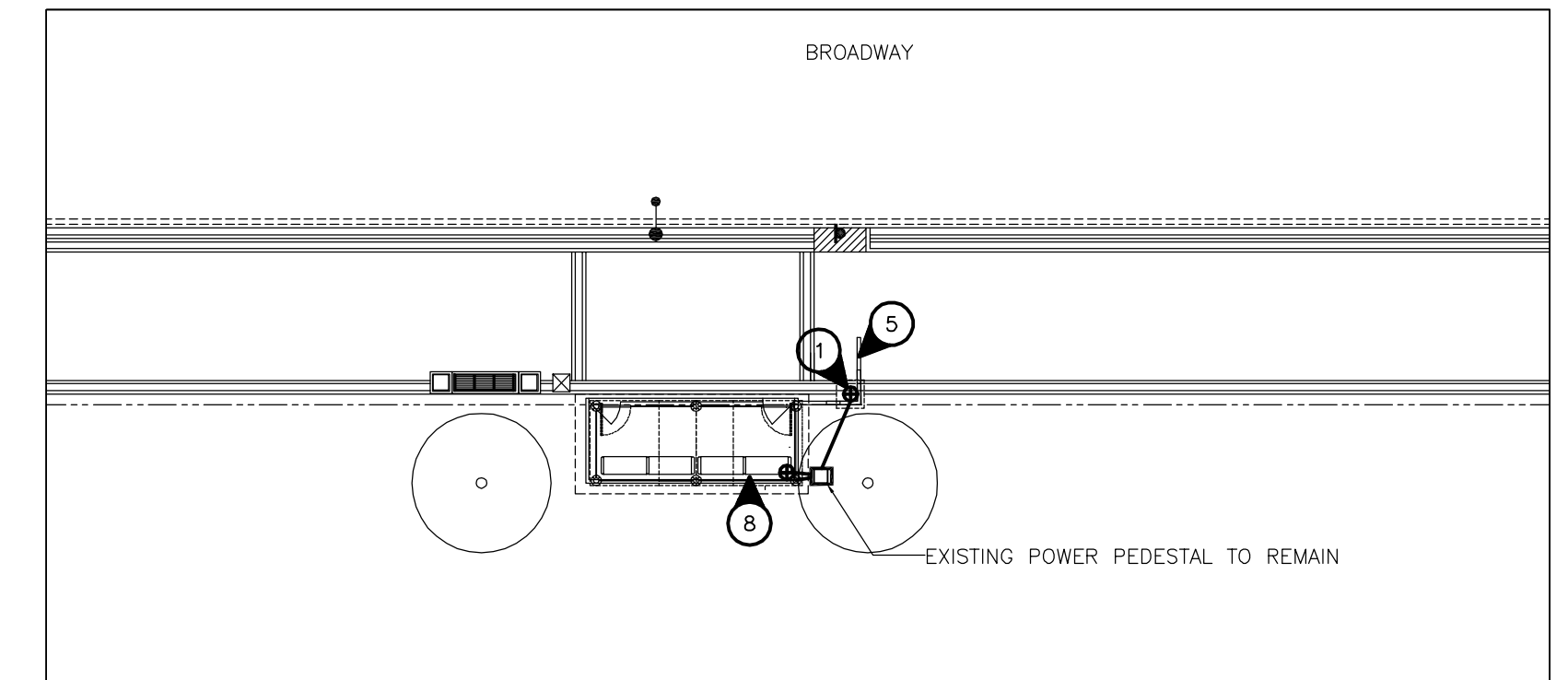
Northbound Osborne, F/S Brandon
Stop 10063 Brandon



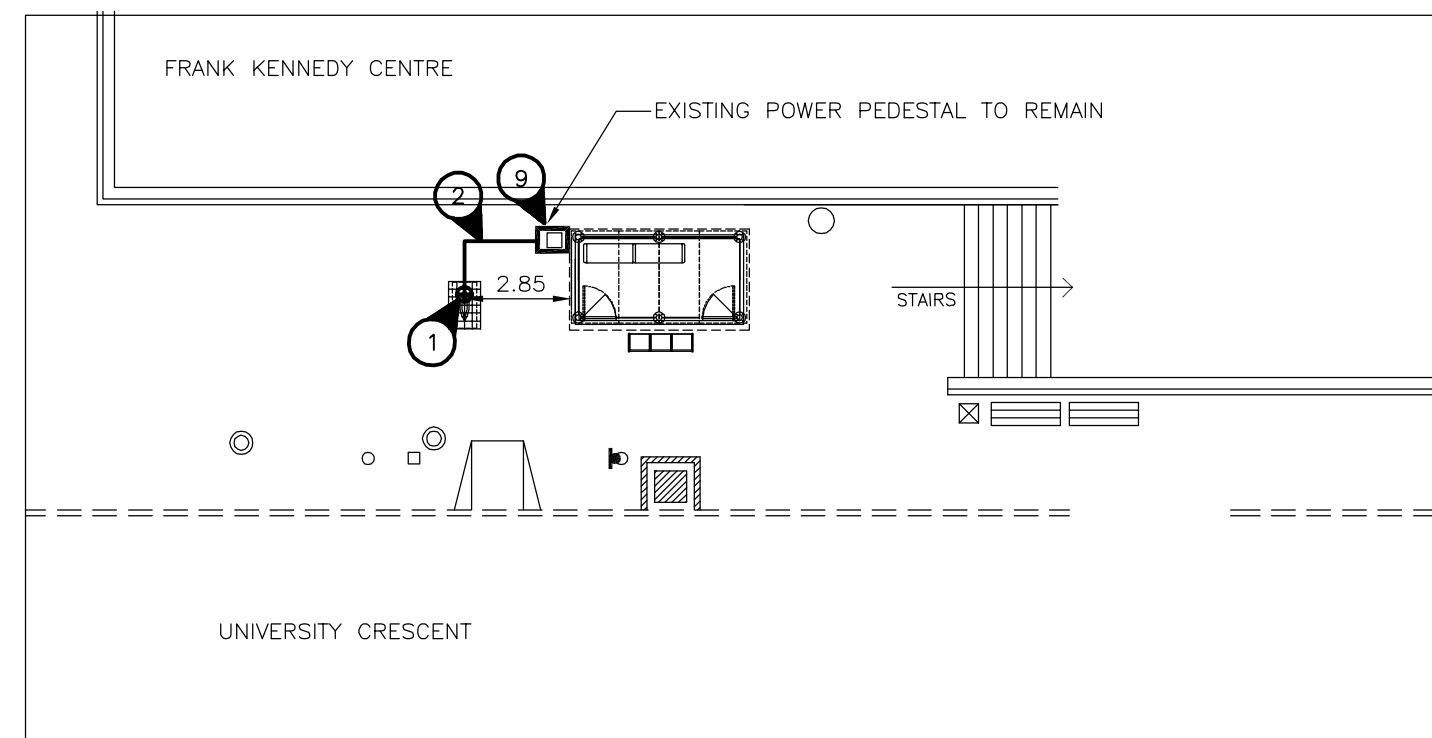
Northbound Osborne, N/S Broadway
Stop 10596 Broadway



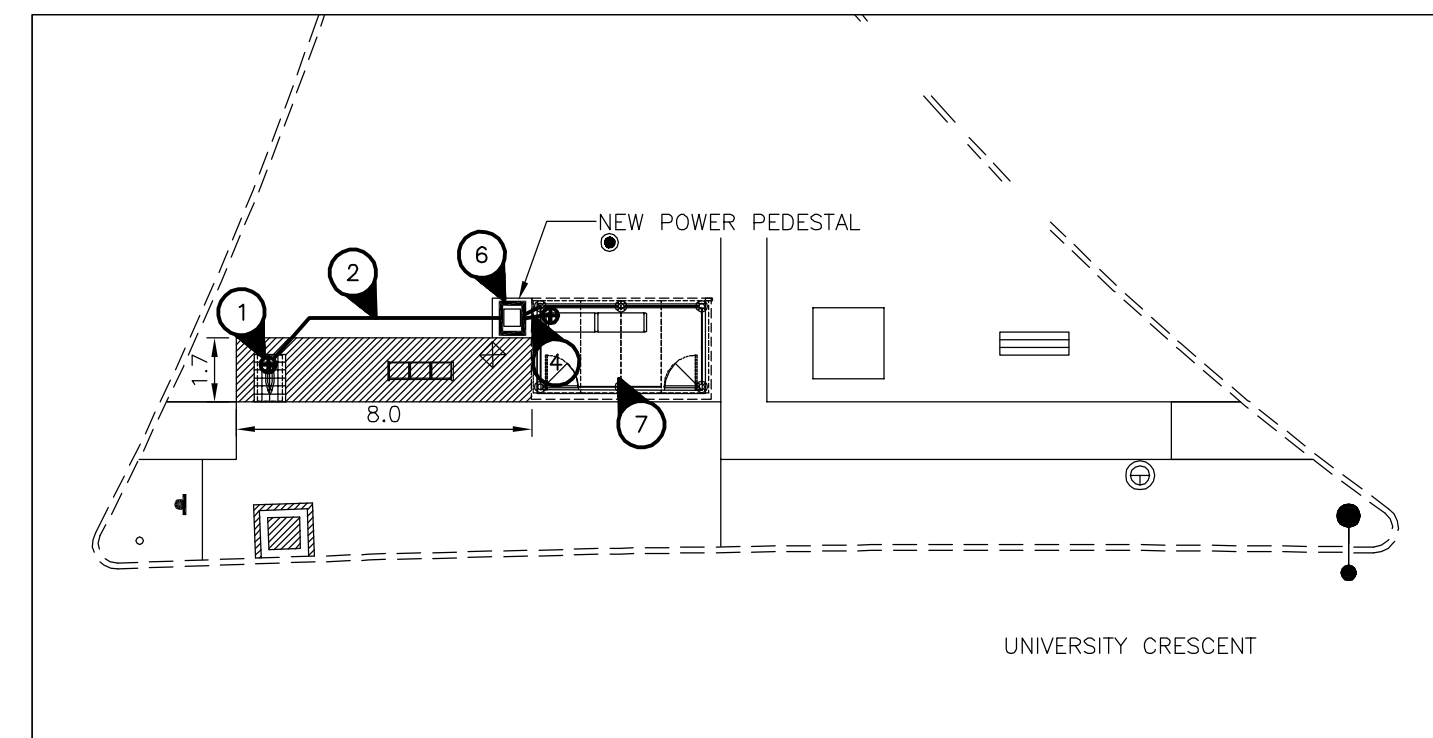
Southbound Osborne, N/S Broadway
Stop 10599 Broadway



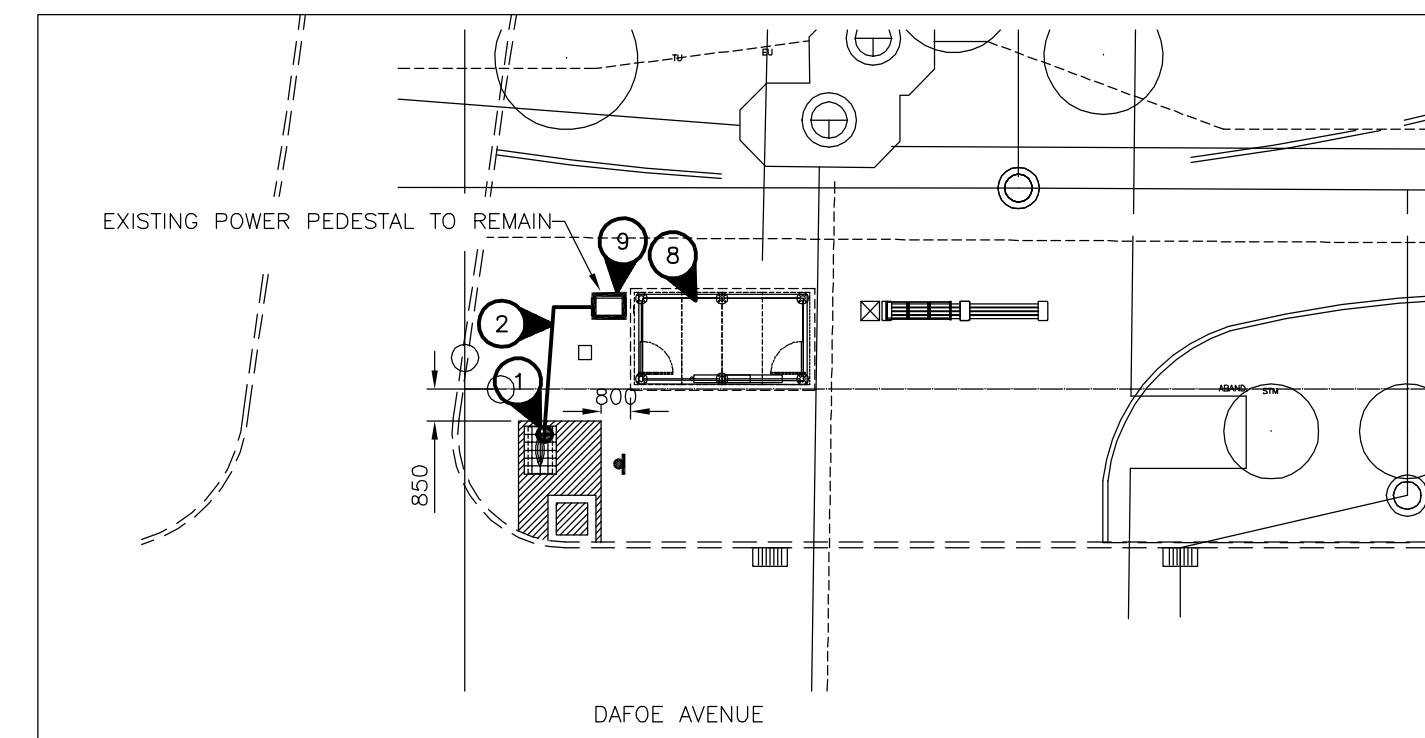
Eastbound Broadway, F/S Osborne
Stop 10585 Osborne East



Northbound University, N/S Opp Chancellor Matheson
Stop 60103 Chancellor Matheson



Northbound University, N/S Dysart
Stop 60108 Dysart



Westbound Dafoe, N/S University
Stop 60105 Dafoe

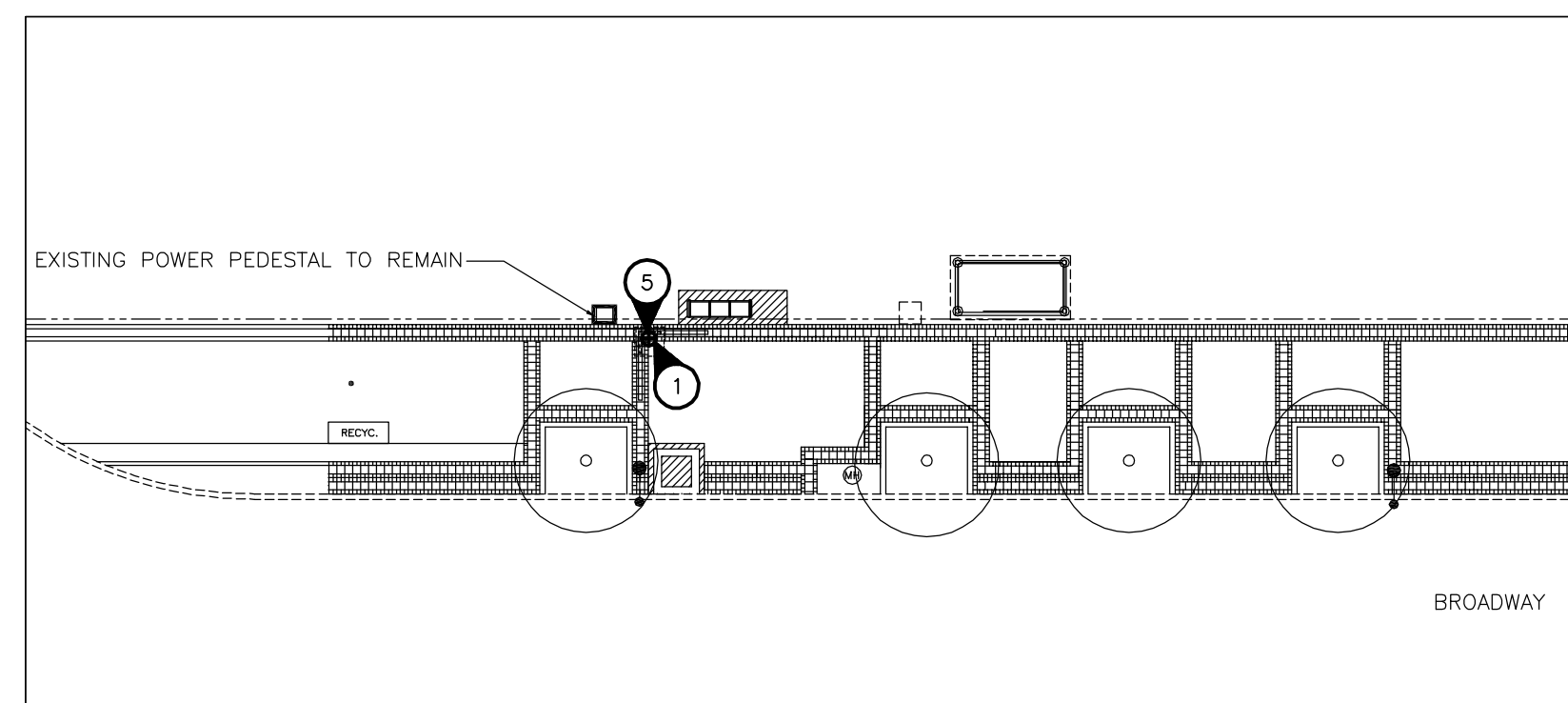


SPECIFIC ELECTRICAL NOTES

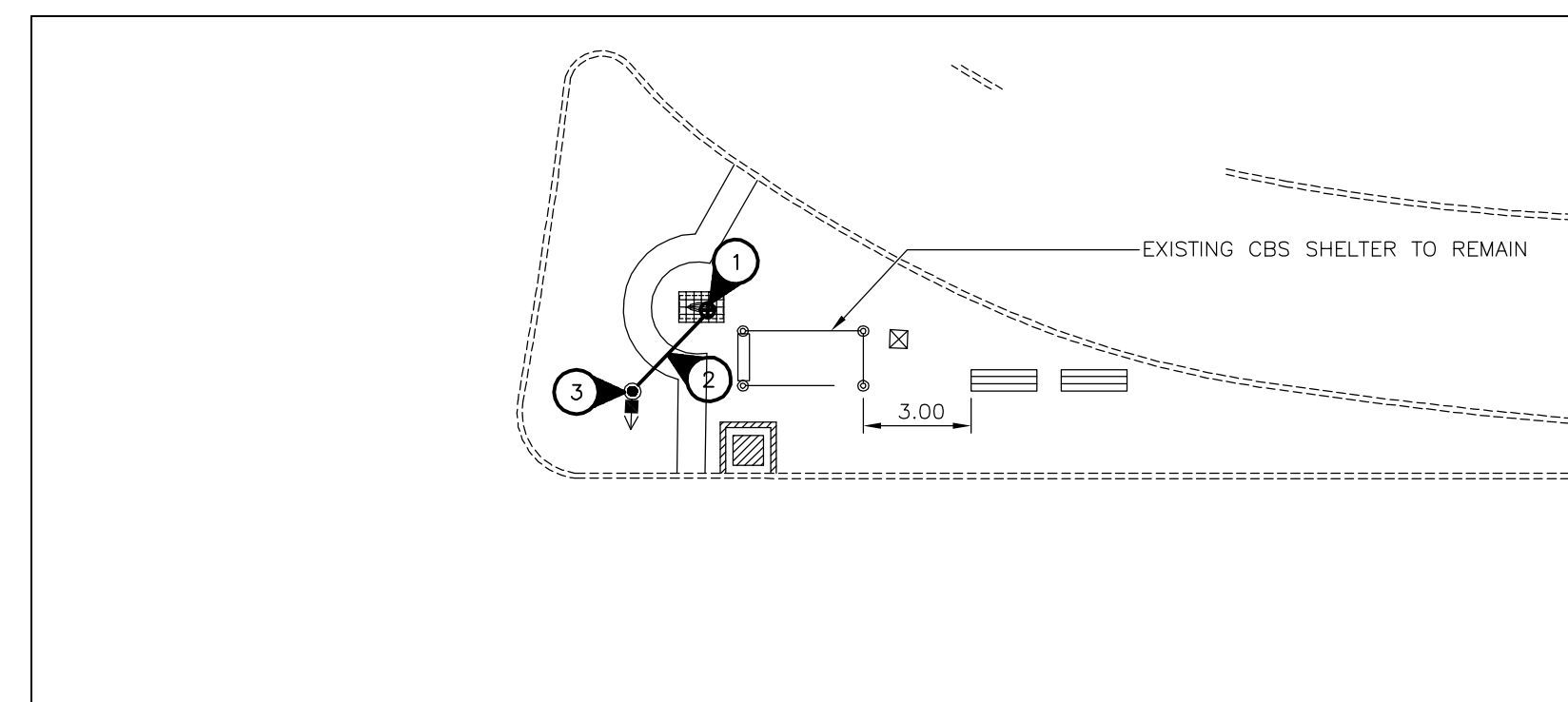
- 1 WIRE & CONNECT ILLUMINATED TRANSIT SIGN AS REQUIRED. COORDINATE EXACT LOCATION AND REQUIREMENTS WITH SIGNAGE SUPPLIER.
- 2 BURIED 2 #12 RWU-90 CU AND GROUND IN A 25MM RIGID PVC CONDUIT. PROVIDE TRENCHING, BACKFILLING AND SURFACE REPAIR AS REQUIRED. PUSH BELOW SURFACE WHERE PRACTICAL. PURCHASE CONDUIT FROM MB HYDRO.
- 3 CONNECT NEW SIGN TO EXISTING STREET LIGHT INDICATED. PROVIDE A 15A-2P WEATHER-PROOF SERVICE ENTRANCE RATED DISCONNECT AT SIGN (240V-1PH). FPE RH 102-2.
- 4 2#12 AND 4#10 RWU90 CU AND GROUND IN A 32MM RIGID PVC CONDUIT.
- 5 CONNECT NEW SIGN AND TRANSIT SHELTER LIGHTING AND HEATING CIRCUITS TO EXISTING POWER PEDESTAL.
- 6 CONNECT NEW SIGN AND TRANSIT SHELTER LIGHTING AND HEATING CIRCUITS TO NEW POWER PEDESTAL 'A'. SEE DETAIL THIS DRAWING. CONNECT NEW PEDESTAL TO MB HYDRO OVERHEAD SERVICE POINT WITH 3#6 RWU90 CU IN 25MM RIGID PVC CONDUIT. PAY UTILITY CONTRIBUTION CHARGES.
- 7 DISCONNECT EXISTING HEATED SHELTER AND METER.
- 8 DISCONNECT EXISTING HEATED SHELTER AND PROTECT WIRES FOR REINSTALLATION. EXISTING WIRING AND C.B.'S MAY BE REUSED IF IN GOOD CONDITION AND SIZED CORRECTLY FOR NEW LOADS. CONNECT NEW SHELTER FOLLOWING INSTALLATION.
- 9 PROVIDE A MATCHING 15A-1P C.B. IN EXISTING POWER PEDESTAL FOR SIGN LIGHTING CIRCUIT. CIRCUIT TO BE PHOTOCCELL CONTROLLED.

GENERAL ELECTRICAL NOTES

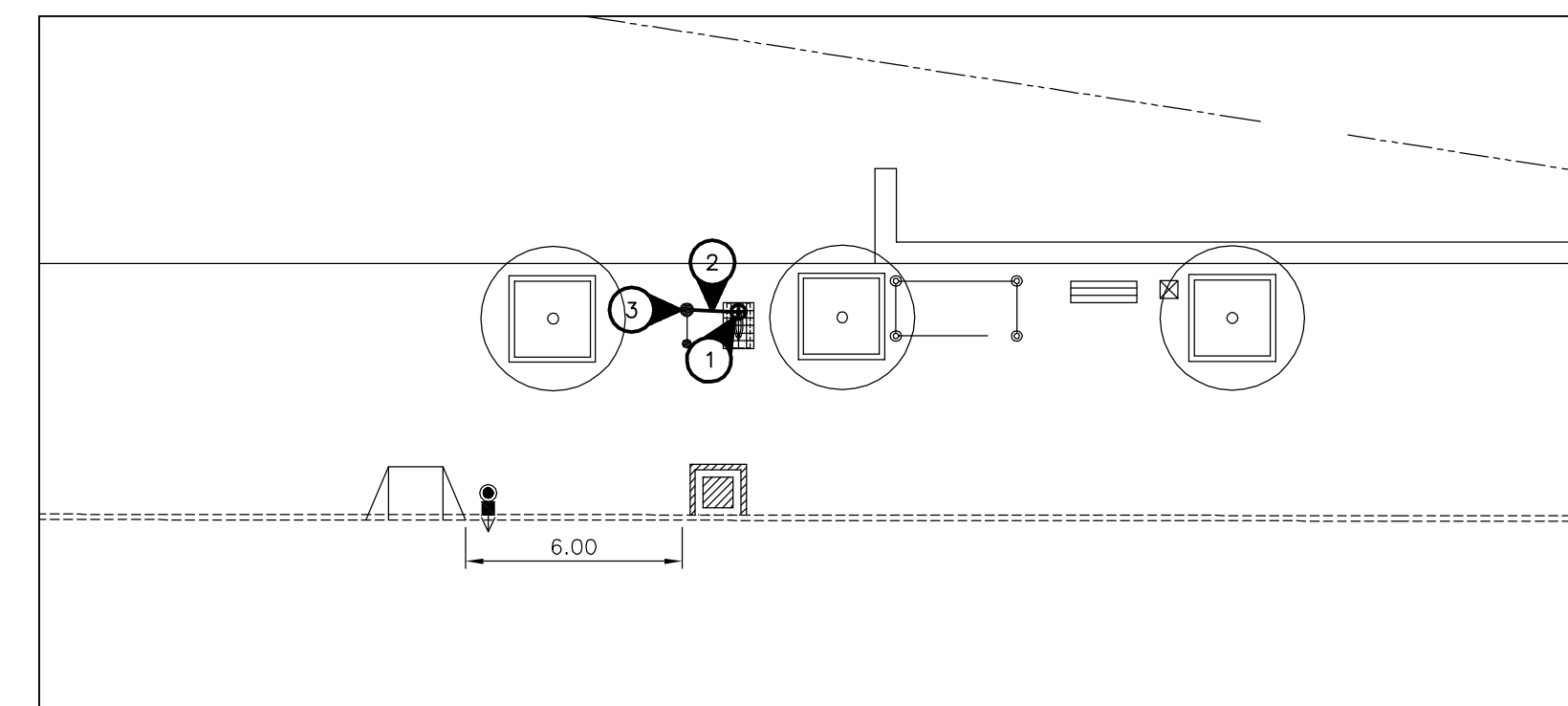
1. INSTALL JUNCTION BOX IN SHELTER TO PROVIDE POWER FOR LIGHTING AND HEATING CIRCUITS.
2. LABEL ELECTRICAL CIRCUIT AND DEVICES WITH LAMACOID PLATES.
3. LOCATE ALL EXISTING U/G SERVICES PRIOR TO TRENCHING.
4. MINIMUM WIRE SIZE #12.
5. CONFIRM ALL POWER CONNECTION POINTS WITH ASSOCIATED UTILITY/THE CITY.



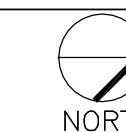
Westbound Broadway, N/S Osborne
Stop 10870 Osborne East



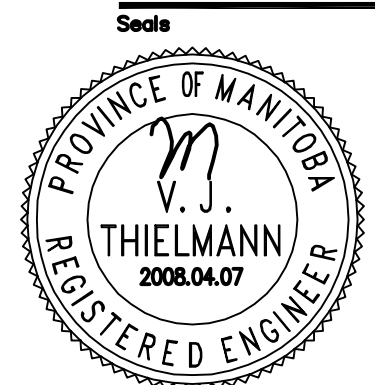
Southbound Queen Elizabeth, N/S Stradbrook
Stop 10159 Stradbrook



Northbound Queen Elizabeth, N/S Opp Mayfair
Stop 10158 Mayfair



No.	Revisions	Date	By
04-08-08	Scale		
1:200			
Designed By	Drawn By	Checked By	
DZ/SL	SL	VJT	



Client

WINNIPEG TRANSIT

Project Title

BUS STOP UPGRADE PROGRAM PHASE 3 ELECTRICAL WORKS

Sheet Title

OSBORNE & DOWNTOWN STOPS LAYOUT PLANS

Project No. Drawing No.

28-090 E-5

NOVA 3 ENGINEERING LTD.
CONSULTING ENGINEERS

201-120 FORT STREET TEL: (204) 943-6142
WINNIPEG, MANITOBA FAX: (204) 942-1276
R3C 1C7 JN: 28-090

THIS DRAWING IS THE EXCLUSIVE PROPERTY OF NOVA 3 ENGINEERING LTD. AND MAY ONLY BE REPRODUCED WITH THE WRITTEN PERMISSION OF NOVA 3 ENGINEERING LTD.
THE CONCEPT AND DESIGN INCORPORATED INTO THIS DRAWING ARE BASED ON INFORMATION PROVIDED BY THE CLIENT AND OTHER RELATED SOURCES. PROFESSIONAL ENGINEER ACCEPTS NO RESPONSIBILITY FOR DRAWING AND DESIGN UNLESS DRAWING IS ACCOMPANIED BY ORIGINAL SEALED AND SIGNED LETTER OF INTENT AND CERTIFICATE OF INSPECTION.
REFER TO WWW.NOVA3CA FOR CAUTIONARY NOTES.