

**TYPICAL ROAD CROSS SECTION**

SCALE: HORZ=1:100  
VERT=1:250

**NOTES:**

1. BASELINE IS NORTH PROPERTY LINE OF JESSIE AVE.
2. THE INTERSECTION OF THE NORTH PROPERTY LINE OF JESSIE AVE. AND THE EAST PROPERTY LINE OF GUELPH ST. IS STA. 1+00
3. ALL ROADWAY MEASUREMENTS ARE TO BACK FACE OF CURB.
4. ADJUST EXIST MH'S AND CB'S TO NEW GRADES.
5. PLUG SUBDRAINS AT TERMINAL ENDS

**GEODETIC MONUMENT PROTECTION**

CONTACT WINNIPEG GEOMATICS BRANCH A MINIMUM OF 3 WORKING DAYS PRIOR TO CONSTRUCTION.

**PROPERTY LIMITS DELINEATION**

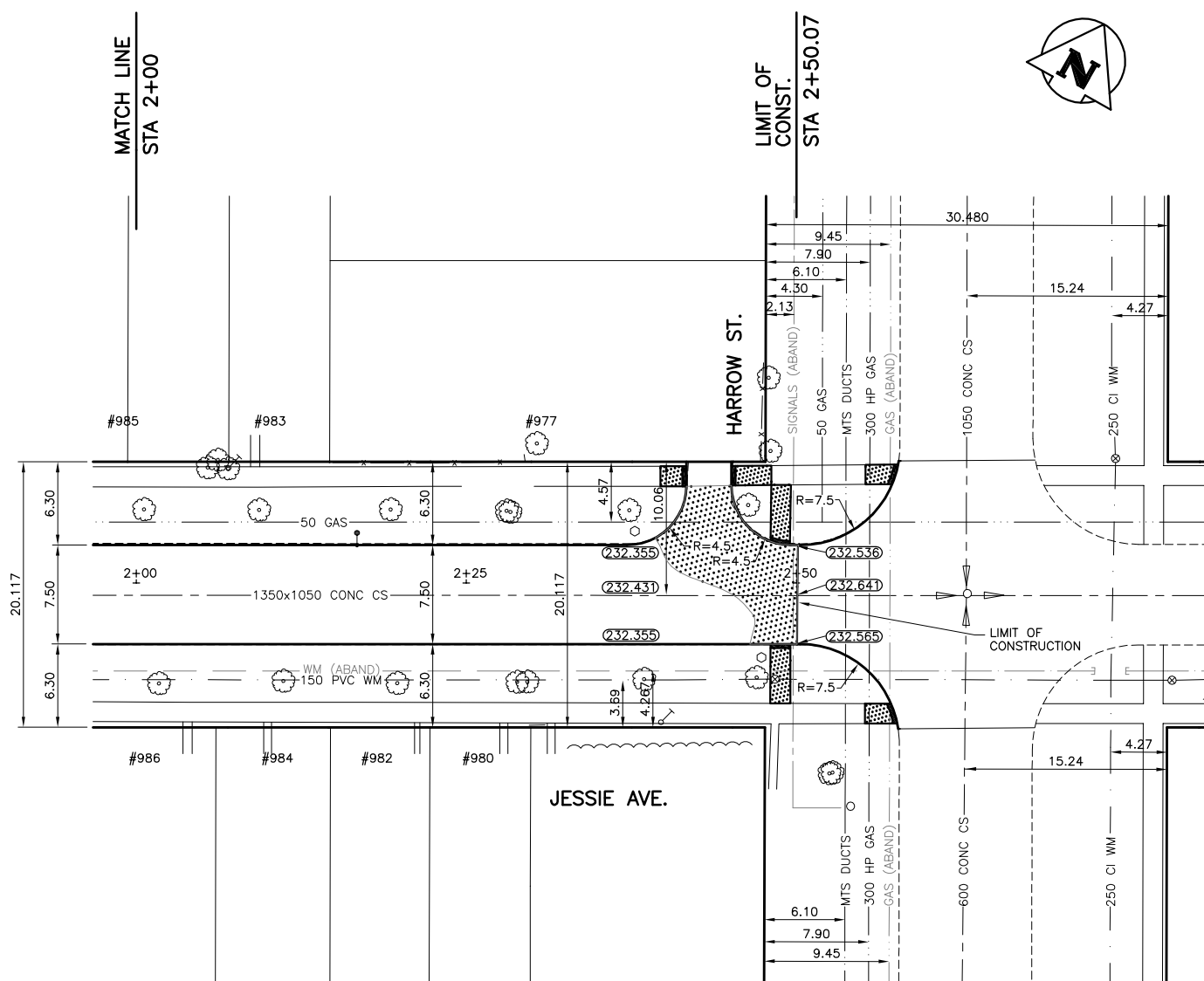
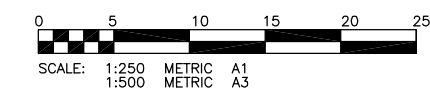
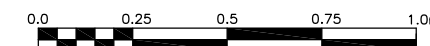
DELINEATION OF PROPERTY LIMITS AS SHOWN ON THIS DWG DOES NOT REPRESENT A "LEGAL SURVEY". KGS GROUP MAKES NO REPRESENTATION OR WARRANTY AS TO THE ACCURACY OF PROPERTY LIMITS DELINEATED ON THIS DWG, NOR ON THE DIMENSIONAL ACCURACY OF DWG FEATURES RELATIVE TO THOSE PROPERTY LIMITS.

**WARNING**

1. NOTIFY THE GAS COMPANY OF THE PROPOSED LOCATION OF EXCAVATION.
2. TAKE PRECAUTION TO AVOID DAMAGE TO GAS COMPANY INSTALLATIONS.
3. SEE PROVINCIAL REGULATION 210/72 FOR DETAILS.

**METRIC**

WHOLE NUMBERS INDICATE MILLIMETRES  
DECIMALIZED NUMBERS INDICATE METRES



EXISTING	LEGEND-PLAN	PROPOSED	EXISTING	LEGEND-PLAN	PROPOSED	EXISTING	LEGEND-PROFILE	PROPOSED
300 LBS	LAND DRAINAGE SEWER	300 LBS	+	TEST HOLE				
250 WWS	WASTE WATER SEWER	250 WWS	+	GUY WIRE				
---	GAS	---	+	LIGHT STANDARD				
---	HYDRO	---	+	BACK OF CURB				
---	M.T.S.	---	+	CONCRETE				
---	WATERMAIN	---	+	ASPHALT				
+	HYDRANT	+	+	SIDEWALK				
+	VALVE	+	+	PROPERTY LINE				
+	MANHOLE	+	+	SURVEY BAR				
+	CATCH BASIN	+	+	GEODETIC BENCHMARK				
+	CURB INLET	+	+	ELEVATION	(32.231)			
+	POLES	+	+					

**LOCATION APPROVED UNDERGROUND STRUCTURES**

SUPV. U/G STRUCTURES DATE COMMITTEE

NOTE:  
LOCATION OF UNDERGROUND STRUCTURES AS SHOWN ARE BASED ON THE BEST INFORMATION AVAILABLE BUT NO GUARANTEE IS GIVEN THAT ALL EXISTING UTILITIES ARE SHOWN OR THAT THE GIVEN LOCATIONS ARE EXACT. CONFIRMATION OF EXISTENCE AND EXACT LOCATION OF ALL SERVICES MUST BE OBTAINED FROM THE INDIVIDUAL UTILITIES BEFORE PROCEEDING WITH CONSTRUCTION.

B.M. 52-026 ELEV. 233.214	N.W. COR. STAFFORD ST. & FLEET AVE., TBLT. IN E. CONC. FOUNDATION OF NO. 901 FLEET AVE., 4.5m N. & 0.3m BELOW SIDING FROM S.E. COR. OF BLDG.
NO.	REVISIONS
0	ISSUED FOR TENDER 08/04/08 RJH
	DATE BY
	DATE 25/01/08

**KGS GROUP** CONSULTING ENGINEERS & PROJECT MANAGERS  
WINNIPEG (204) 896-1209  
THUNDER BAY (807) 345-2233

DESIGNED BY B.M.	CHECKED BY R.J.H.
DRAWN BY D.W.	APPROVED BY
HOR. SCALE: 1:250	RELEASED FOR CONSTRUCTION:
VERTICAL: 1:50	DATE

ENGINEER'S SEAL  
PROVINCE OF MANITOBA  
**R.J. HOUSTON**  
4395  
REGISTERED PROFESSIONAL ENGINEER

**THE CITY OF WINNIPEG**  
PUBLIC WORKS DEPARTMENT  
ENGINEERING SERVICES DIVISION

PROJECT TITLE: **JESSIE AVENUE STREET RECONSTRUCTION**  
GUELPH ST TO HARROW ST  
STA 2+00.00 TO STA 2+50.07

SHEET OF: **04** OF **10**  
COMPUTER FILE NAME: **JESSIE PLOT**  
CITY DRAWING NUMBER: **0004**

CONSULTANT DRAWING NO.: **07-0107-23**

P:\PROJECTS\2007\07-0107-23\MUN\DWGS\JESSIE AVE-RECON\JESSIE PLOT.DWG  
PLOT 1:1 A-1