

TYPICAL ROAD CROSS SECTION
SCALE: HORZ=1:100
VERT=1:250

- NOTES:**
1. BASELINE IS NORTH PROPERTY LINE OF ROSEDALE AVE.
 2. THE INTERSECTION OF THE NORTH PROPERTY LINE OF ROSEDALE AVE. AND THE EAST PROPERTY LINE OF NASSU ST. IS STA. 1+00
 3. ALL ROADWAY MEASUREMENTS ARE TO BACK FACE OF CURB.
 4. ADJUST EXIST MH'S AND CB'S TO NEW GRADES.
 5. PLUG SUBDRAINS AT TERMINAL ENDS

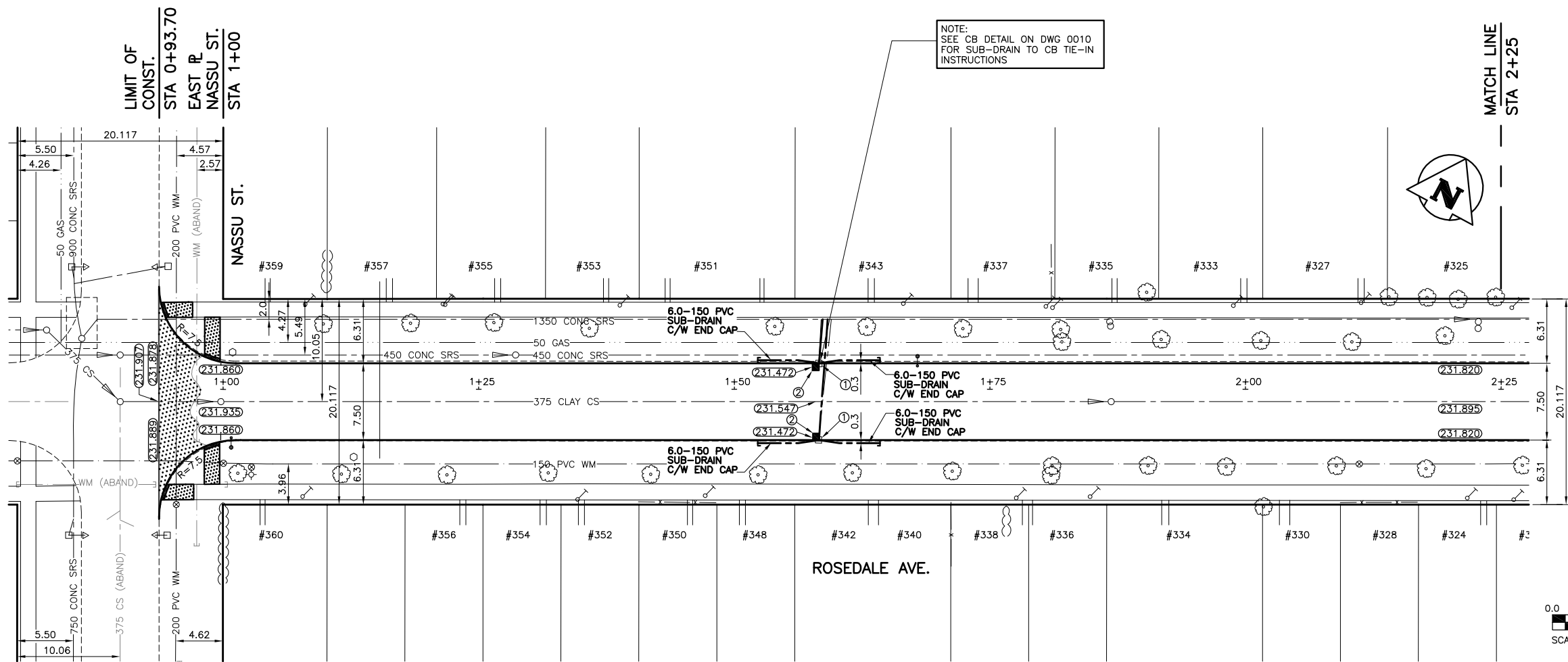
GEODETIC MONUMENT PROTECTION
CONTACT WINNIPEG GEOMATICS BRANCH A MINIMUM OF 3 WORKING DAYS PRIOR TO CONSTRUCTION.

PROPERTY LIMITS DELINEATION
DELINEATION OF PROPERTY LIMITS AS SHOWN ON THIS DWG DOES NOT REPRESENT A "LEGAL SURVEY". KGS GROUP MAKES NO REPRESENTATION OR WARRANTY AS TO THE ACCURACY OF PROPERTY LIMITS DELINEATED ON THIS DWG, NOR ON THE DIMENSIONAL ACCURACY OF DWG FEATURES RELATIVE TO THOSE PROPERTY LIMITS.

WARNING

1. NOTIFY THE GAS COMPANY OF THE PROPOSED LOCATION OF EXCAVATION.
2. TAKE PRECAUTION TO AVOID DAMAGE TO GAS COMPANY INSTALLATIONS.
3. SEE PROVINCIAL REGULATION 210/72 FOR DETAILS.

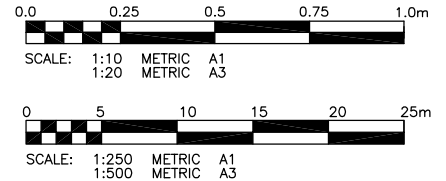
METRIC
WHOLE NUMBERS INDICATE MILLIMETRES
DECIMALIZED NUMBERS INDICATE METRES



NOTE:
SEE CB DETAIL ON DWG 0010 FOR SUB-DRAIN TO CB TIE-IN INSTRUCTIONS

LAND DRAINAGE REMOVAL & INSTALLATION DIRECTIONS

- ① REMOVE EXIST CURB INLET, ABANDON EXIST CB & PLUG EXIST CB LEADS.
- ② INSTALL NEW CB AND CB LEAD



300 LBS	LAND DRAINAGE SEWER	300 LBS	TEST HOLE	
250 WWS	WASTE WATER SEWER	250 WWS	GUY WIRE	
---	GAS	---	LIGHT STANDARD	
---	HYDRO	---	BACK OF CURB	
---	M.T.S.	---	CONCRETE	
150 WM	WATERMAIN	150 WM	ASPHALT	
+	HYDRANT	+	SIDEWALK	
+	VALVE	+	PROPERTY LINE	
+	MANHOLE	+	SURVEY BAR	
+	CATCH BASIN	+	GEODETIC BENCHMARK	
+	CURB INLET	+	ELEVATION	
+	POLES	+		
EXISTING	LEGEND-PLAN	PROPOSED	EXISTING	LEGEND-PROFILE

LOCATION APPROVED UNDERGROUND STRUCTURES

SUPV. U/G STRUCTURES COMMITTEE DATE

NOTE:
LOCATION OF UNDERGROUND STRUCTURES AS SHOWN ARE BASED ON THE BEST INFORMATION AVAILABLE BUT NO GUARANTEE IS GIVEN THAT ALL EXISTING UTILITIES ARE SHOWN OR THAT THE GIVEN LOCATIONS ARE EXACT. CONFIRMATION OF EXISTENCE AND EXACT LOCATION OF ALL SERVICES MUST BE OBTAINED FROM THE INDIVIDUAL UTILITIES BEFORE PROCEEDING WITH CONSTRUCTION.

B.M. 53-021
ELEV. 232.577

N.E. COR. BERESFORD AVE. & NASSAU ST. S. TBLT. IN S. CONC. FOUNDATION OF NO. 925 BERESFORD AVE., 1.2m E & 0.2m BELOW BRICK FROM THE MOST S. WLY. COR. OF BLDG. (ROSEDALE UNITED CHURCH).

KGS GROUP CONSULTING ENGINEERS & PROJECT MANAGERS

WINNIPEG (204) 896-1209
THUNDER BAY (807) 345-2233

DESIGNED BY B.M. CHECKED BY R.J.H.
DRAWN BY D.W. APPROVED BY

HOR. SCALE: 1:250
VERTICAL: 1:50

ISSUED FOR TENDER 08/04/08 RJH
NO. REVISIONS DATE BY

ENGINEER'S SEAL
PROVINCE OF MANITOBA
R.J. HOUSTON
Member
4395
REGISTERED PROFESSIONAL ENGINEER

THE CITY OF WINNIPEG PUBLIC WORKS DEPARTMENT ENGINEERING SERVICES DIVISION

PROJECT TITLE: **ROSEDALE AVENUE STREET RECONSTRUCTION**
NASSU ST. TO OSBORNE ST.
STA 0+93.70 TO STA 2+25.00

SHEET 05 OF 10
COMPUTER FILE NAME: ROSEDALE PLOT
CITY DRAWING NUMBER: 0005

CONSULTANT DRAWING NO. 07-0107-23